



TEMPORARY ABANDONMENT WELL APPLICATION

OPERATOR: License# _____
 Name: _____
 Address 1: _____
 Address 2: _____
 City: _____ State: _____ Zip: _____ + _____
 Contact Person: _____
 Phone: (_____) _____
 Contact Person Email: _____
 Field Contact Person: _____
 Field Contact Person Phone: (_____) _____

API No. 15- _____
 Spot Description: _____
 _____ - _____ - _____ - _____ Sec. _____ Twp. _____ S. R. _____ E W
 _____ feet from N / S Line of Section
 _____ feet from E / W Line of Section
 GPS Location: Lat: _____, Long: _____
(e.g. xx.xxxxx) (e.g. -xxx.xxxxx)
 Datum: NAD27 NAD83 WGS84
 County: _____ Elevation: _____ GL KB
 Lease Name: _____ Well #: _____
 Well Type: (check one) Oil Gas OG WSW Other: _____
 SWD Permit #: _____ ENHR Permit #: _____
 Gas Storage Permit #: _____
 Spud Date: _____ Date Shut-In: _____

	Conductor	Surface	Production	Intermediate	Liner	Tubing
Size						
Setting Depth						
Amount of Cement						
Top of Cement						
Bottom of Cement						

Casing Fluid Level from Surface: _____ How Determined? _____ Date: _____
 Casing Squeeze(s): _____ to _____ w / _____ sacks of cement, _____ to _____ w / _____ sacks of cement. Date: _____
(top) (bottom) (top) (bottom)
 Do you have a valid Oil & Gas Lease? Yes No
 Depth and Type: Junk in Hole at _____ Tools in Hole at _____ Casing Leaks: Yes No Depth of casing leak(s): _____
(depth) (depth)
 Type Completion: ALT. I ALT. II Depth of: DV Tool: _____ w / _____ sacks of cement Port Collar: _____ w / _____ sack of cement
(depth) (depth)
 Packer Type: _____ Size: _____ Inch Set at: _____ Feet
 Total Depth: _____ Plug Back Depth: _____ Plug Back Method: _____

Geological Data:

Formation Name	Formation Top	Formation Base	Completion Information
1. _____	At: _____	to _____ Feet	Perforation Interval _____ to _____ Feet or Open Hole Interval _____ to _____ Feet
2. _____	At: _____	to _____ Feet	Perforation Interval _____ to _____ Feet or Open Hole Interval _____ to _____ Feet

UNDER PENALTY OF PERJURY I HEREBY ATTEST THAT THE INFORMATION CONTAINED HEREIN IS TRUE AND CORRECT TO THE BEST OF MY KNOWLEDGE

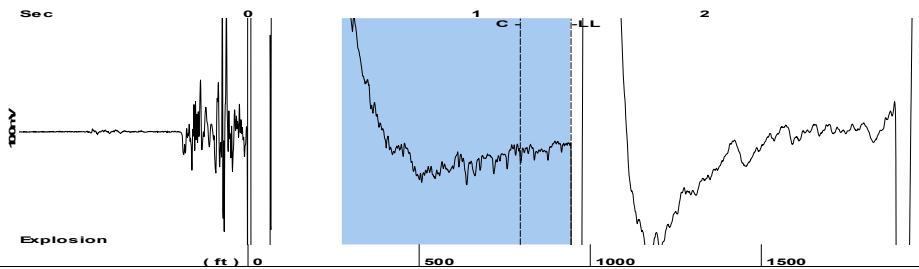
Submitted Electronically

Do NOT Write in This Space - KCC USE ONLY	Date Tested: _____	Results: _____	Date Plugged: _____	Date Repaired: _____	Date Put Back in Service: _____
	Review Completed by: _____ Comments: _____				
TA Approved: <input type="checkbox"/> Yes <input type="checkbox"/> Denied Date: _____					

Mail to the Appropriate KCC Conservation Office:

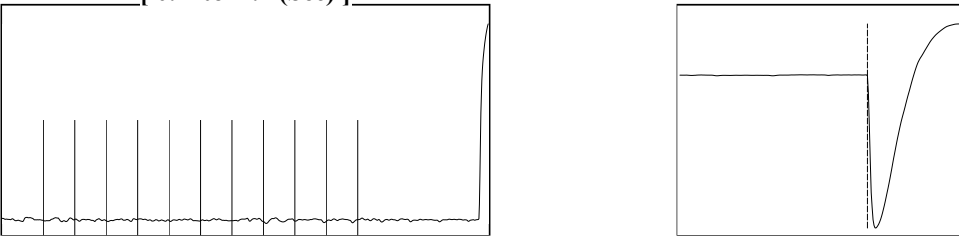
	KCC District Office #1 - 210 E. Frontview, Suite A, Dodge City, KS 67801	Phone 620.682.7933
	KCC District Office #2 - 3450 N. Rock Road, Building 600, Suite 601, Wichita, KS 67226	Phone 316.337.7400
	KCC District Office #3 - 1500 SW Seventh Steet, Chanute, KS 66720	Phone 620.432.2300
	KCC District Office #4 - 2301 E. 13th Street, Hays, KS 67601-2651	Phone 785.261.6250

Group: MyWells Well: Eudora #1 (acquired on: 08/21/17 10:10:10)



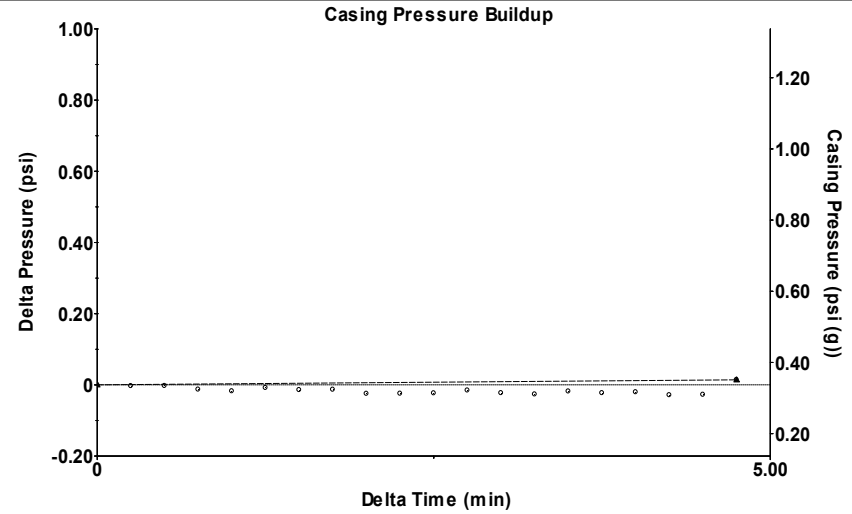
Filter Type High Pass Automatic Collar Count Yes Time 1.414 sec
 Manual Acoustic Veloc 1300.31 ft/s Manual JTS/sec 15.4799 Joints 22.4682 Jts
 Depth 943.67 ft

[0.4 to 1.4 (Sec)]



Analysis Method: Automatic

Group: MyWells Well: Eudora #1 (acquired on: 08/21/17 10:10:10)

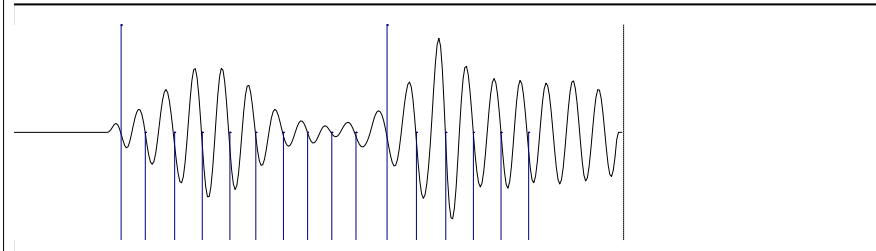


Change in Pressure 0.01 psi PT6854
 Change in Time 4.75 min Range 0 - ? psi

Group: MyWells Well: Eudora #1 (acquired on: 08/21/17 10:10:10)

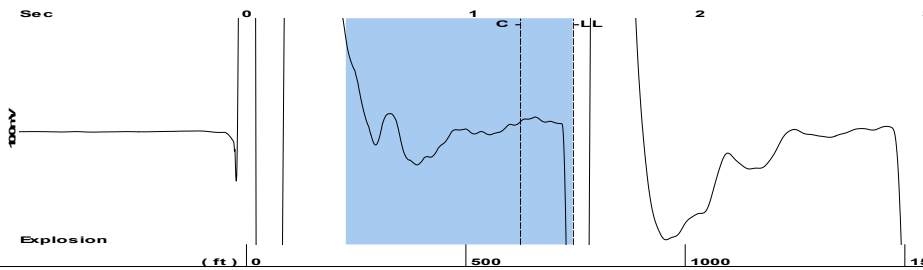
Production Current	Potential	Casing Pressure	Producing
Oil - *-	- *- BBL/D	0.3 psi (g)	Annular Gas Flow - *- Mscf/D
Water - *-	- *- BBL/D	Casing Pressure Buildup 0.0 psi	% Liquid 100 %
Gas - *-	- *- Mscf/D	4.75 min	
IPR Method	Vogel	Gas/Liquid Interface Pressure - *- psi (g)	
PBHP/SBHP	- *-		
Production Efficiency	0.0	Liquid Level Depth 943.67 ft	
Oil 40 deg.API		Pump Intake Depth - *- ft	
Water 1.05 Sp.Gr.H2O		Formation Depth 3500.00 ft	
Gas 0.65 Sp.Gr.AIR			
Acoustic Velocity 1334.75 ft/s			
Formation Submergence			
Total Gaseous Liquid Column HT (TVD) - *- ft			
Equivalent Gas Free Liquid HT (TVD) - *- ft			
Acoustic Test			

Group: MyWells Well: Eudora #1 (acquired on: 08/21/17 10:10:10)



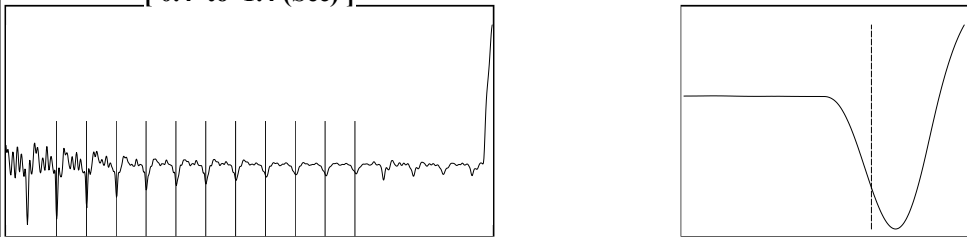
Acoustic Velocity 1334.75 ft/s Joints counted 15
 Joints Per Second 15.8898 jts/sec Joints to liquid level 22.4682
 Depth to liquid level 943.665 ft Filter Width 13.4799 17.4799
 Automatic Collar Count Yes Time to 1st Collar 0.248 1.192

Group: MyWells Well: Woydziak (acquired on: 08/21/17 10:29:51)



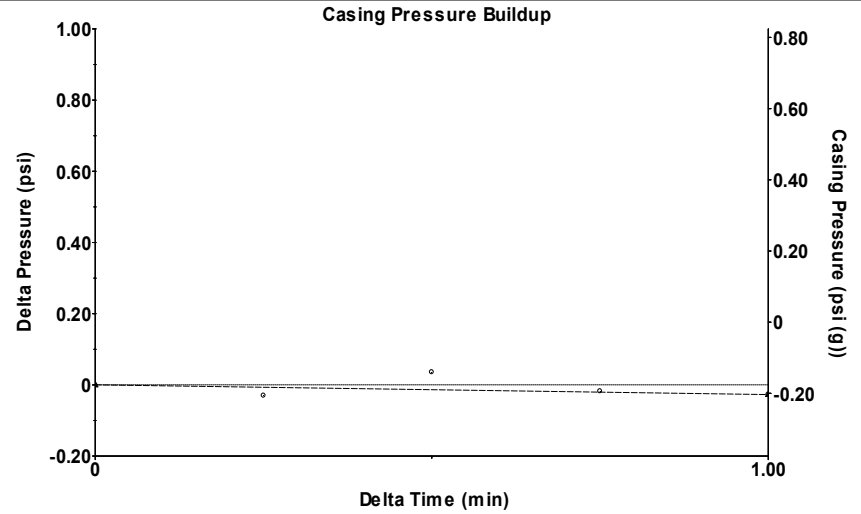
Filter Type High Pass Automatic Collar Count Yes Time 1.441 sec
 Manual Acoustic Veloc 1034.26 ft/s Manual JTS/sec 16.3132 Joints 23.4946 Jts
 Depth 744.78 ft

[0.4 to 1.4 (Sec)]



Analysis Method: Automatic

Group: MyWells Well: Woydziak (acquired on: 08/21/17 10:29:51)

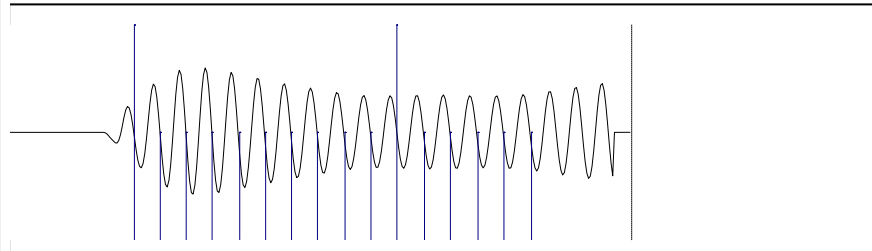


Change in Pressure -0.03 psi PT6854
 Change in Time 1.00 min Range 0 - ? psi

Group: MyWells Well: Woydziak (acquired on: 08/21/17 10:29:51)

Production	Potential	Casing Pressure	Producing
Current			
Oil - *-	- *- BBL/D	-0.2 psi (g)	
Water - *-	- *- BBL/D	Casing Pressure Buildup	
Gas - *-	- *- Mscf/D	-0.0 psi	
		1.00 min	
IPR Method	Vogel	Gas/Liquid Interface Pressure	Annular Gas Flow
PBHP/SBHP	- *-	- *- psi (g)	- *- Mscf/D
Production Efficiency	0.0		% Liquid
			100 %
Oil 40 deg.API		Liquid Level Depth	
Water 1.05 Sp.Gr.H2O		744.78 ft	
Gas 0.93 Sp.Gr.AIR		Pump Intake Depth	
		- *- ft	
Acoustic Velocity 1033.7 ft/s		Formation Depth	
		3500.00 ft	
Formation Submergence			Pump Intake
Total Gaseous Liquid Column HT (TVD)	- *- ft		- *- psi (g)
Equivalent Gas Free Liquid HT (TVD)	- *- ft		Producing BHP
			- *- psi (g)
Acoustic Test			Static BHP
			- *- psi (g)

Group: MyWells Well: Woydziak (acquired on: 08/21/17 10:29:51)



Acoustic Velocity 1033.7 ft/s Joints counted 15
 Joints Per Second 16.3043 jts/sec Joints to liquid level 23.4946
 Depth to liquid level 744.778 ft Filter Width 14.3132 18.3132
 Automatic Collar Count Yes Time to 1st Collar 0.288 1.208

Conservation Division
District Office No. 4
2301 E. 13th Street
Hays, KS 67601-2651



Phone: 785-261-6250
Fax: 785-625-0564
<http://kcc.ks.gov/>

Pat Apple, Chairman
Shari Feist Albrecht, Commissioner
Jay Scott Emler, Commissioner

Sam Brownback, Governor

August 22, 2017

Zach Patterson
American Oil LLC
1200 MAIN SUITE 410
HAYS, KS 67601

Re: Temporary Abandonment
API 15-009-25098-00-00
EUDORA 1
SE/4 Sec.26-16S-13W
Barton County, Kansas

Dear Zach Patterson:

"Your temporary abandonment (TA) application for the well listed above has been approved. In accordance with K.A.R. 82-3-111 the TA status of this well will expire 08/22/2018.

- * If you return this well to service or plug it, please notify the District Office.
- * If you sell this well you are required to file a Transfer of Operator form, T-1.
- * If the well will remain temporarily abandoned, you must submit a new TA application, CP-111, before 08/22/2018.

You may contact me at the number above if you have questions.

Very truly yours,

RICHARD WILLIAMS "