

Confidentiality Requested:

Yes No

KANSAS CORPORATION COMMISSION
OIL & GAS CONSERVATION DIVISION

Form ACO-1

January 2018

Form must be Typed

Form must be Signed

All blanks must be Filled

WELL COMPLETION FORM
WELL HISTORY - DESCRIPTION OF WELL & LEASE

OPERATOR: License # _____

Name: _____

Address 1: _____

Address 2: _____

City: _____ State: _____ Zip: _____ + _____

Contact Person: _____

Phone: (_____) _____

CONTRACTOR: License # _____

Name: _____

Wellsite Geologist: _____

Purchaser: _____

Designate Type of Completion:

New Well Re-Entry Workover

Oil WSW SWD

Gas DH EOR

OG GSW

CM (Coal Bed Methane)

Cathodic Other (Core, Expl., etc.): _____

If Workover/Re-entry: Old Well Info as follows:

Operator: _____

Well Name: _____

Original Comp. Date: _____ Original Total Depth: _____

Deepening Re-perf. Conv. to EOR Conv. to SWD

Plug Back Liner Conv. to GSW Conv. to Producer

Commingled Permit #: _____

Dual Completion Permit #: _____

SWD Permit #: _____

EOR Permit #: _____

GSW Permit #: _____

Spud Date or Date Reached TD Completion Date or Recompletion Date

API No.: _____

Spot Description: _____

_____ - _____ - _____ Sec. _____ Twp. _____ S. R. _____ East West

_____ Feet from North / South Line of Section

_____ Feet from East / West Line of Section

Footages Calculated from Nearest Outside Section Corner:

NE NW SE SW

GPS Location: Lat: _____, Long: _____
(e.g. xx.xxxxx) (e.g. -xxx.xxxxx)

Datum: NAD27 NAD83 WGS84

County: _____

Lease Name: _____ Well #: _____

Field Name: _____

Producing Formation: _____

Elevation: Ground: _____ Kelly Bushing: _____

Total Vertical Depth: _____ Plug Back Total Depth: _____

Amount of Surface Pipe Set and Cemented at: _____ Feet

Multiple Stage Cementing Collar Used? Yes No

If yes, show depth set: _____ Feet

If Alternate II completion, cement circulated from: _____

feet depth to: _____ w/ _____ sx cmt.

Drilling Fluid Management Plan

(Data must be collected from the Reserve Pit)

Chloride content: _____ ppm Fluid volume: _____ bbls

Dewatering method used: _____

Location of fluid disposal if hauled offsite:

Operator Name: _____

Lease Name: _____ License #: _____

Quarter _____ Sec. _____ Twp. _____ S. R. _____ East West

County: _____ Permit #: _____

AFFIDAVIT

I am the affiant and I hereby certify that all requirements of the statutes, rules and regulations promulgated to regulate the oil and gas industry have been fully complied with and the statements herein are complete and correct to the best of my knowledge.

Submitted Electronically

KCC Office Use ONLY

Confidentiality Requested

Date: _____

Confidential Release Date: _____

Wireline Log Received Drill Stem Tests Received

Geologist Report / Mud Logs Received

UIC Distribution

ALT I II III Approved by: _____ Date: _____

Operator Name: _____ Lease Name: _____ Well #: _____

Sec. _____ Twp. _____ S. R. _____ East West County: _____

INSTRUCTIONS: Show important tops of formations penetrated. Detail all cores. Report all final copies of drill stems tests giving interval tested, time tool open and closed, flowing and shut-in pressures, whether shut-in pressure reached static level, hydrostatic pressures, bottom hole temperature, fluid recovery, and flow rates if gas to surface test, along with final chart(s). Attach extra sheet if more space is needed.

Final Radioactivity Log, Final Logs run to obtain Geophysical Data and Final Electric Logs must be emailed to kcc-well-logs@kcc.ks.gov. Digital electronic log files must be submitted in LAS version 2.0 or newer AND an image file (TIFF or PDF).

Drill Stem Tests Taken <input type="checkbox"/> Yes <input type="checkbox"/> No <i>(Attach Additional Sheets)</i> Samples Sent to Geological Survey <input type="checkbox"/> Yes <input type="checkbox"/> No Cores Taken <input type="checkbox"/> Yes <input type="checkbox"/> No Electric Log Run <input type="checkbox"/> Yes <input type="checkbox"/> No Geologist Report / Mud Logs <input type="checkbox"/> Yes <input type="checkbox"/> No List All E. Logs Run:	<input type="checkbox"/> Log Formation (Top), Depth and Datum <input type="checkbox"/> Sample Name Top Datum
--	---

CASING RECORD <input type="checkbox"/> New <input type="checkbox"/> Used							
Report all strings set-conductor, surface, intermediate, production, etc.							
Purpose of String	Size Hole Drilled	Size Casing Set (In O.D.)	Weight Lbs. / Ft.	Setting Depth	Type of Cement	# Sacks Used	Type and Percent Additives

ADDITIONAL CEMENTING / SQUEEZE RECORD				
Purpose:	Depth Top Bottom	Type of Cement	# Sacks Used	Type and Percent Additives
<input type="checkbox"/> Perforate <input type="checkbox"/> Protect Casing <input type="checkbox"/> Plug Back TD <input type="checkbox"/> Plug Off Zone				

1. Did you perform a hydraulic fracturing treatment on this well? Yes No *(If No, skip questions 2 and 3)*
2. Does the volume of the total base fluid of the hydraulic fracturing treatment exceed 350,000 gallons? Yes No *(If No, skip question 3)*
3. Was the hydraulic fracturing treatment information submitted to the chemical disclosure registry? Yes No *(If No, fill out Page Three of the ACO-1)*

Date of first Production/Injection or Resumed Production/Injection:	Producing Method: <input type="checkbox"/> Flowing <input type="checkbox"/> Pumping <input type="checkbox"/> Gas Lift <input type="checkbox"/> Other <i>(Explain)</i> _____			
Estimated Production Per 24 Hours	Oil Bbls.	Gas Mcf	Water Bbls.	Gas-Oil Ratio Gravity

DISPOSITION OF GAS: <input type="checkbox"/> Vented <input type="checkbox"/> Sold <input type="checkbox"/> Used on Lease <i>(If vented, Submit ACO-18.)</i>	METHOD OF COMPLETION: <input type="checkbox"/> Open Hole <input type="checkbox"/> Perf. <input type="checkbox"/> Dually Comp. <input type="checkbox"/> Commingled <i>(Submit ACO-5)</i> <i>(Submit ACO-4)</i>	PRODUCTION INTERVAL: Top Bottom
---	---	------------------------------------

Shots Per Foot	Perforation Top	Perforation Bottom	Bridge Plug Type	Bridge Plug Set At	Acid, Fracture, Shot, Cementing Squeeze Record <i>(Amount and Kind of Material Used)</i>

TUBING RECORD:	Size:	Set At:	Packer At:	
----------------	-------	---------	------------	--

Form	ACO1 - Well Completion
Operator	Trans Pacific Oil Corporation
Well Name	MCMANNIS B UNIT 1-34
Doc ID	1362732

All Electric Logs Run

Dual Induction
Micro
Sonic
Cement Bond Log
Compensated Neutron/Density

Form	ACO1 - Well Completion
Operator	Trans Pacific Oil Corporation
Well Name	MCMANNIS B UNIT 1-34
Doc ID	1362732

Perforations

Shots Per Foot	Perforation Record	Material Record	Depth
2	4083-4089	750 gal 15% MCA	

Customer TRANS PACIFIC		Lease No.		Date 5-30-17	
Lease McMANNIS TRUST		Well # B-1-3U			
Field Order # 11515	Station PIATT	Casing 13 3/8	Depth 275	County PIATT	State KS
Type Job Z-42 13 3/8 casing			Formation	Legal Description 74-265-15W	

PIPE DATA		PERFORATING DATA		FLUID USED		TREATMENT RESUME		
Casing Size	Tubing Size	Shots/Ft		Acid	RATE	PRESS	ISIP	
13 3/8				305 SK 60/40 POZ			5 Min.	
Depth 270	Depth	From	To	Pre Pad 2% 5-13	Max cc 25 CF		10 Min.	
Volume 42.4	Volume	From	To	Pad	Min		15 Min.	
Max Press 300	Max Press	From	To	Frac	Avg		Annulus Pressure	
Well Connection STV	Annulus Vol.	From	To		HHP Used		Total Load	
Plug Depth 230	Packer Depth	From	To	Flush 39.3	Gas Volume			

Customer Representative LARRY SALASO	Station Manager WESTERMAN	Treater MIKE MATTAL
---	----------------------------------	----------------------------

Service Units 83353	27463	19889	19918
Driver Names MATTAL	GIANNI	OSBORN	

Time	Casing Pressure	Tubing Pressure	Bbls. Pumped	Rate	Service Log
6:30					ON location / SAFETY Meeting
8:00					RUN 13 3/8 CSNG
9:30					CSNG on button
9:40					hook u CSNG / BREAK circ w. Rig
9:50	200		66	5	MIX 305 SK 60/40 POZ
10:05	250		0 39.3	5	START DISPLACEMENT
10:15	200		39.3	-	Start Plug Down / Shut in well

10 bbls circ to PIT
Leak
JOB complete
Thank You!
MIKE MATTAL
Scott & Riley

RECEIVED
JUN 02 2017
BY: _____

Customer <i>Trsns Prc. Lic. Corp.</i>	Lease No.	Date <i>6/10/2017</i>
Lease <i>McMann's Trust 'B'</i>	Well # <i>1-34</i>	
Field Order # <i>14971</i>	Station	Casing <i>4 1/2</i> Depth <i>4521</i> County <i>Pratt</i> State <i>KS</i>
Type Job <i>242/4 1/2 LongString</i>	Formation <i>TD-4530</i>	Legal Description <i>34-26s-15w</i>

PIPE DATA		PERFORATING DATA		FLUID USED	TREATMENT RESUME		
Casing Size	Tubing Size	Shots/Ft		Acid	RATE	PRESS	ISIP
<i>4 1/2</i>				Pre Pad	Max		5 Min.
Depth <i>4521</i>	Depth	From	To	Pad	Min		10 Min.
Volume <i>70</i>	Volume	From	To	Frac	Avg		15 Min.
Max Press	Max Press	From	To		HHP Used		Annulus Pressure
Well Connection	Annulus Vol.	From	To	Flush <i>Freshwater</i>	Gas Volume		Total Load
Plug Depth <i>4480</i>	Packer Depth	From	To				

Customer Representative _____ Station Manager *Justin Westerman* Treater *Darin Franklin*

Service Units	<i>92911</i>	<i>27463</i>	<i>8498</i>	<i>19862</i>				
Driver Names	<i>Darin</i>	<i>McGrew</i>	<i>Berry</i>	<i>Berry</i>				

Time	Casing Pressure	Tubing Pressure	Bbls. Pumped	Rate	Service Log
<i>10:30am</i>					<i>on location / safety meeting</i>
					<i>4 1/2" 11.6# casing set at 4521</i>
					<i>T-1, 5, 9, 12, 15, 17, 20, 22, 24, 26 B-2</i>
					<i>200SK DA 2 Cement, 10% SSIT, 10% Gypsum</i>
					<i>0.8% fluid loss, 0.25ppm cellulosic, 5ppm</i>
					<i>gilsonite, 14.8ppm, 1.54ye.12, 6.63water</i>
<i>3:00pm</i>					<i>Pipe on bottom & break circulation</i>
<i>4:00pm</i>	<i>300</i>		<i>3</i>	<i>6</i>	<i>Pump 3 bbls water</i>
	<i>300</i>		<i>12</i>	<i>6</i>	<i>12 bbls flush</i>
	<i>300</i>		<i>3</i>	<i>6</i>	<i>3 bbls water</i>
	<i>200</i>		<i>55</i>	<i>6</i>	<i>mix 200SK cement</i>
					<i>Shut down</i>
					<i>Wash pump & lines</i>
	<i>200</i>		<i>0</i>	<i>6</i>	<i>Start displacement</i>
	<i>500</i>		<i>40</i>	<i>6</i>	<i>lift pressure</i>
	<i>700</i>		<i>60</i>	<i>3</i>	<i>slow rate</i>
<i>4:37pm</i>	<i>1700</i>		<i>67</i>	<i>3</i>	<i>Bump plug</i>
					<i>Flow - Hold</i>
	<i>100</i>		<i>12</i>	<i>3</i>	<i>plug return mouse holes</i>
<i>5:00pm</i>					<i>Job complete / Darin & crew</i>
					<i>Thank you!!!</i>

GEOLOGIST'S REPORT

DRILLING TIME AND SAMPLE LOG

COMPANY TRANS PACIFIC OIL CORP.
 LEASE McMannis B' Unit #1-34
 FIELD _____
 LOCATION 105' FSL, 840' FWL
 SEC 34 TWSP 26s RGE 15w
 COUNTY Pratt STATE Kansas

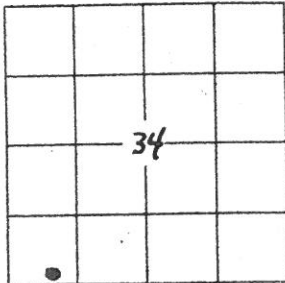
ELEVATIONS
 KB 2066
 DF _____
 GL 2055
 Measurements Are All
 From K.B.

CONTRACTOR Sterling Drilling Company Rig 2
 SPUD 5/30/2017 COMP 6/11/2017
 RTD 4530' LTD 4531'
 MUD UP 3200' TYPE MUD Fresh

CASING
 SURFACE 8 5/8" @ 280'
 PRODUCTION 4 1/2" @ 4512'
 ELECTRICAL SURVEYS
 GDL / ^{ELI} CNL / DIL / micro / SONIC

SAMPLES SAVED FROM 3400 TO TD
 DRILLING TIME KEPT FROM 3200 TO TD
 SAMPLES EXAMINED FROM 3400 TO TD
 GEOLOGICAL SUPERVISION FROM 3340 TO TD
 GEOLOGIST ON WELL W. Bryce Bidleman / Max Lovely (4095' to T.D.)

FORMATION TOPS	LOG	SAMPLES
Chase	2192 (-126)	2187 (-121)
Heabner	3758 (-1692)	3758 (-1692)
Brown Lime	3911 (-1845)	3910 (-1844)
Lansing	3936 (-1870)	3934 (-1868)
Stark	4158 (-2092)	4162 (-2096)
Base KC	4264 (-2198)	4267 (-2201)
Cherokee Sand	4364 (-2298)	4366 (-2300)
Kinderhook Sand	4392 (-2326)	4395 (-2329)
Viola	4400 (-2334)	4403 (-2337)
RTD		4530 (-2464)
LTD	4531 (-2465)	



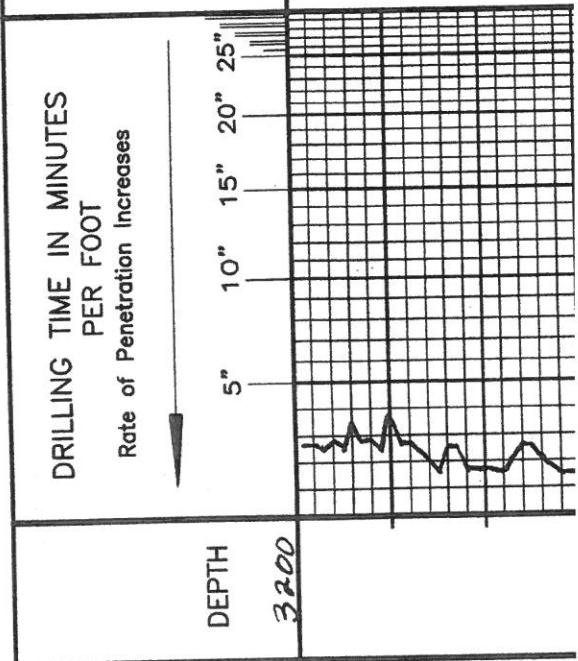
REMARKS *Due to favorable structural position, as indicated by 3D seismic, and encouraging DST results in the Lansing, it was decided to set 4 1/2" production casing to further test the Lansing. The Kinderhook sand was also fairly well developed with oil and gas shows in samples. This zone will be tested through casing at well.*

*Respectfully,
W. Bryce Bidleman*

LEGEND

- Anhydrite
- Salt
- Sandstone
- Shale
- Carb sh
- Limestone
- Ool. Lime
- Chert
- Dolomite

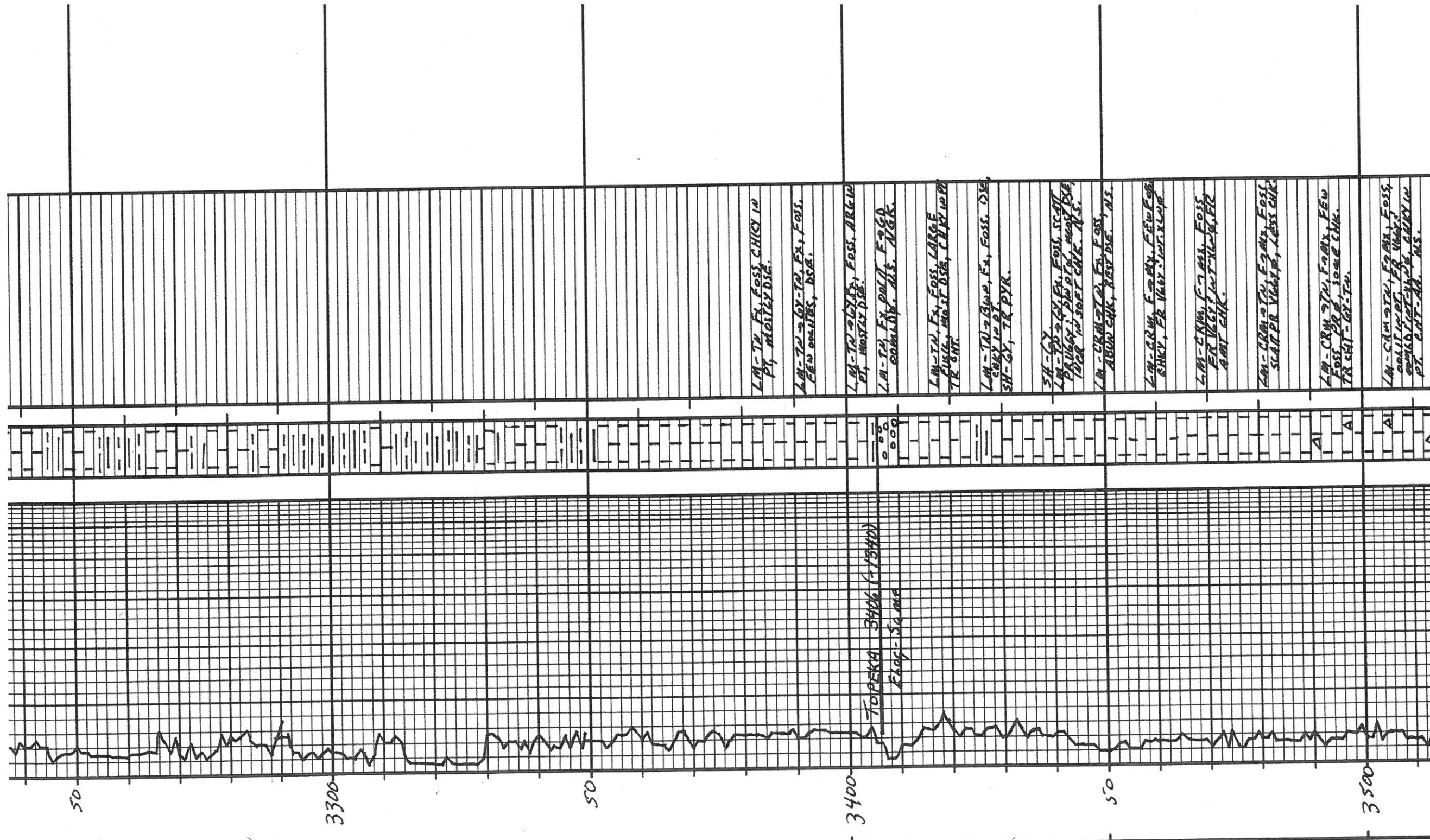
" = 100'
SCALE



LITHOLOGY	SAMPLE DESCRIPTIONS
[Anhydrite pattern]	[Vertical lines pattern]

REMARKS

Note: Gas kick @ Langdon Sen



TOPEKA 3406 (-1380)
Flag - Same

LM-TN Ex. Foss. CHICK 10
PT, MOSTLY DISE.

LM-TN → GY-TN, Ex. Foss.
FEW COONIES, DISE.

LM-TN → GY-TN, Foss. ARGON
PT, MOSTLY DISE.

LM-TN, Ex. Foss. LARGE
COMBLY. MS. NGR.

LM-TN, Ex. Foss. LARGE
FUSIL, MOST DISE, CHRY 10 PT
TR 8 NT.

LM-TN → GY-TN, Ex. Foss. DISE
CHRY 10 PT.

SH-GY, TR PYR.

SH-GY
LM-TN → GY-TN, Ex. Foss. SCAT
PR 10 PT, SH-GY, MOST DISE,
DISE 10 SOFT CHK. MS.

LM-CRM → TN, Ex. Foss. DISE,
ABUND CHK, XEST DISE, MS.

LM-CRM, Foss. FEW Foss
RHY, FR 10 PT, NOT X-LOG

LM-CRM, Foss. Foss
FR 10 PT, NOT X-LOG, FR
AMT CHK.

LM-CRM → TN, Foss. Foss
SCAT PR 10 PT, LESS CHK.

LM-CRM → TN, Foss. FEW
Foss. FR 10 PT, SOME CHK.
TR CHK - GY-TN.

LM-CRM → TN, Foss. Foss,
SCAT 10 PT, FR 10 PT,
COMBLY, NOT X-LOG, CHRY 10
PT, CHK - Ad. MS.

A
A
A

3500

50

3600

50

3700

50

HEBNER 3754 (1692)
E109 SAME

LM - CRM → TW, F → BM, FOSS, FOSS
ONIT IN PT, FR VIBRY,
SOME PR NOT-XLDP, CHRY IN
PT. CNT-AA. NS.

LM - CRM → TW, Fx, FOSS, PR
Vibry & NOT-XLDP, DSE IN PT
CNT-T → 25.72.

LM - TW, Fx, FOSS, MOST DSE.
CNT-WH → 72.

LM - TW → 25.72, Fx, FOSS,
FR VIBRY &, REST DSE.
CNT-AA.
SH-GY.

LM - CRM, Fx, FOSS, FR
Vibry & NOT-XLDP, FEW FOSS
ALOS, SOME CHRY. CNT-T → 24.

LM - CRM → TW, Fx, FOSS, SCAL
PR VIBRY &, ABOVE CHK.
CNT-WH → CRM. NS.

LM - TW, F → BM, FOSS, FEW
POSITIVE, SCAL PR VIBRY,
REST DSE. CNT-T → N.

LM - AA, FR AMT SOFT GRK.
CNT-AA.

LM - AA, CNT-AA
SH-GY → BLK.

LM - CRM → TW, Fx, FOSS,
MOSTAY DSE, CHRY IN PT.

LM - WH → CRM → TW, F → BM,
ONIT IN PT, SCAL FR VIBRY
'NOT-XLDP, 1 PC W/FR
VY LITE FO, ABOVE OR STN,
60 FID
LM - TW, Fx, FOSS, SCAL PR &,
REST DSE. NS.

LM - TW, Fx, FOSS IN PT, GOIT
IN PT, SCAL FR VIBRY,
COMBOP. NS.

LM - AA, ABOVE SOFT WHCHK

LM - AA.

LM - TW, Fx, FOSS, F → B
VIBRY & FOSMIDE, VY CHRY,
SPL WASH WH.

LM - CRM → TW, Fx, FOSS, SCAL
VIBRY & NOT-XLDP, SOME 2ND
CAL, W ABOVE SOFT W N CHK.

LM - CRM, F → BM, FOSS, FEW
POSITIVE, FR VIBRY, NOT-XLDP,
ABOV CHK.

LM - CRM, F → BM, FR AMT 2nd
CAL W/ FR VIBRY, NOT-XLDP,
CHRY LM.

LM - TW, F → BM, SUBL IN PT,
PR → FR NOT-XLDP. NS.

LM - CRM → TW, Fx → BM, SUBL
IN PT, SCAL PR NOT-XLDP,
DSE IN PT. NS.

LM - TW, F → BM, SCAL PR VIBRY
'NOT-XLDP, MOST DSE. NS.

LM - TW → ABOVE, Fx, SUBL
SCAL PR VIBRY, NOT-XLDP,
REST DSE.

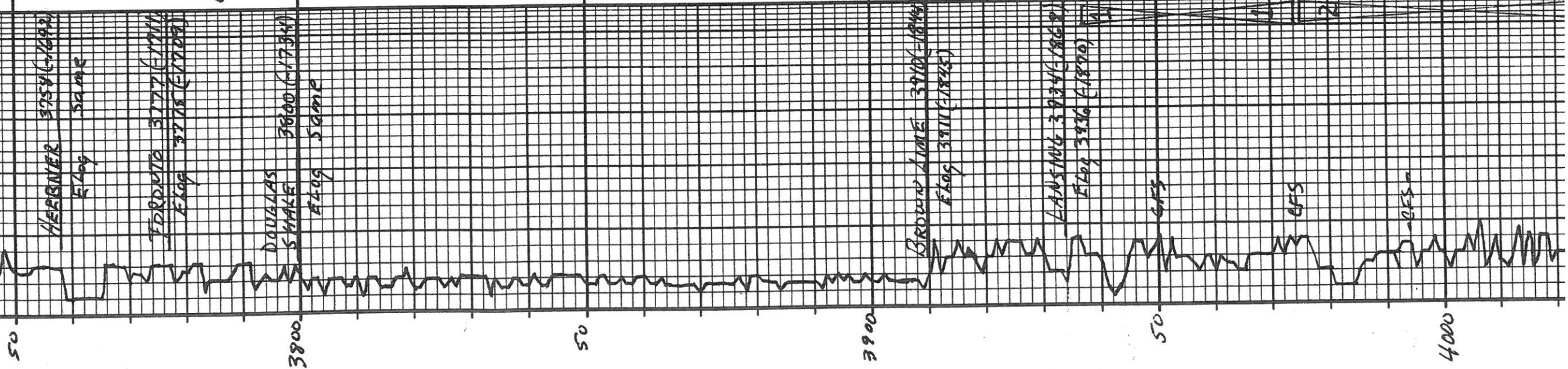
LM - AA.

LM - TW, F → BM, MOST DSE,
SOME PR NOT-XLDP.

SH - BLK CARB
80 U6K

LM - GY → TW, FOSS, DSE.

80 U6K



80 UGK

LM-TL, F. 7 m, MOST DSE,
SOME PR INT-NAP.

SH-DK, CARB
80 UGK

LM-GY → LY → TO, FOSS, DSE.

SH-RD → GY

LM-TL → GY → 260' BOW, Fx,
FOSS, ARG. IN FT.

LM-CRM → TN, Fx, SEAR
DR VEGY: INT-CLAY, 2nd
CAL, Fx, DK BOW, FB, STN,
DULL FLU, NO OOR.

LM-CRM → TD, Fx, FRAM, 2nd
CAL, PR, VEGY: INT-CLAY,
ESSE, BOW, TO, DSE, STN, BOW,
DSE.

LM-AA.

SH-GY, SILTY, MIC, SOFT,
SOME GY CLAY.

SH-GY → DK GY, SILTY, MIC,
TR PT.

SH-AA, TR LGY SD-VEG,
W-LEM, HARD, SILTY.

SH-AA,
SD-AA.

SH-GY, SILTY, MIC,
SLY, W SD LGY, VEG,
F-CRM, SILTY, MIC, IN PT.

SD-GY, VEG, F-AD, E.M,
SILTY, MIC, IN PT.

SH-GY → DR GY, SILTY, MIC,
SDY, IN PT.

SH-AA.

SH-DK GY → BIK.

SH-AA.

LM-TL, Fx, FEW FOSS, DSE.

LM-BOW → GY-BOW, Fx, DSE.

SH-GY → DK GY, SOFT,
LM-BOW → BOW, Fx, DSE.

LM-TL → GY, Fx, OLLI, Fx,
OOLIG, FB, INT 2nd, CAL,
FR, W, Fx, W, GSD, FB, STN,
W, K, OOR, BULL, Fx.

LM-CRM, Fx, Mx, FEW FOSS,
PR VEGY, PR PT, INT-CLAY,
F, Fx, FB, INT TO STN.

LM-CRM → TN, Fx, FEW FOSS,
FR INT 2nd CAL, PR, FB,
Veg, W, Fx, W, FB, STN,
ST TO STN, FR OOR.

LM-CRM, Fx, FEW FOSS, CRN,
SCAT PR VEGY, Fx,
TR, W, FB, STN, Fx,
FA-CRM, Fx, PR VEGY, SS BLK,
RESID, O, L, ARG, STN, Fx,
LM-TL, Fx, DSE, M.S.

LM-TL → BOW, Fx, FEW FOSS,
SCAT PR VEGY, MOSTLY DSE,
FEW PR W, BLK, OOR, DSE,
FROM ABOVE. SH-GY → DK GY,
OOR, INT PT, SH-GY → DK GY.

LM-TL → BOW, Fx, DSE, M.S.
SH-TL → GY, FOSS.

LM-TL → BOW, Fx, DSE,
SMALL BULCHER, INT-BA,
SH-DK → BOW → GY.

DST #1 3937-3971
30-60-60-90
1st Open: BOB / 15 sec.
1st ST: No Blow Back
2nd Open: BOB / 6 sec.
2nd ST: No Blow Back
Rec: 60' G. COM (3020
60' G. W. COM
(2080, 29
120' Total Fluic
+ 2512' GIP
= 150' UGK
FP: 30-41 / 43-7
SIP: 1089 / 1082
HP: 1995 / 1976

≈ 120 UGK
DST #2 3975-4030
30-75-60-90
1st Open: BOB / 3 min
3" Blow Back on 1st
2nd Open: BOB / 7 min.
Blow Back - BOB 2nd
Rec: 500' GIP
240' W M
945' W
1185' Total Fluic
FP: 66-290 / 301-5
SIP: 1291 / 1293A
HP: 1915 / 1917A

Res: 500' GIP
 240' WM
 945' W
 1185' Total Fluid

FP: 66-290 / 301-5
 SIP: 1291 / 1293M
 HP: 1915 / 1917M

DST 3 4068-4095
 30.75.60.90
 IF: BOB 28 sec, GTS 2.2M
 IS1: BOB 12 min
 FF: BOB 1 min, Gg 2.0.7ml
 FSI: BOB 5 min
 Rec: 955 cco - 75% O, 2.5.
 180' HgC WMC 0.35%
 60' HgC WMC 12%
 30% G, 10% O
 CHLOR: 150,000 GRA
 FP: 67-143, 158-284
 SIP: 1228-1206
 HP: 1984-1971

500LK

GEO ON LOCK @ 4095'
 (Max Lovely)

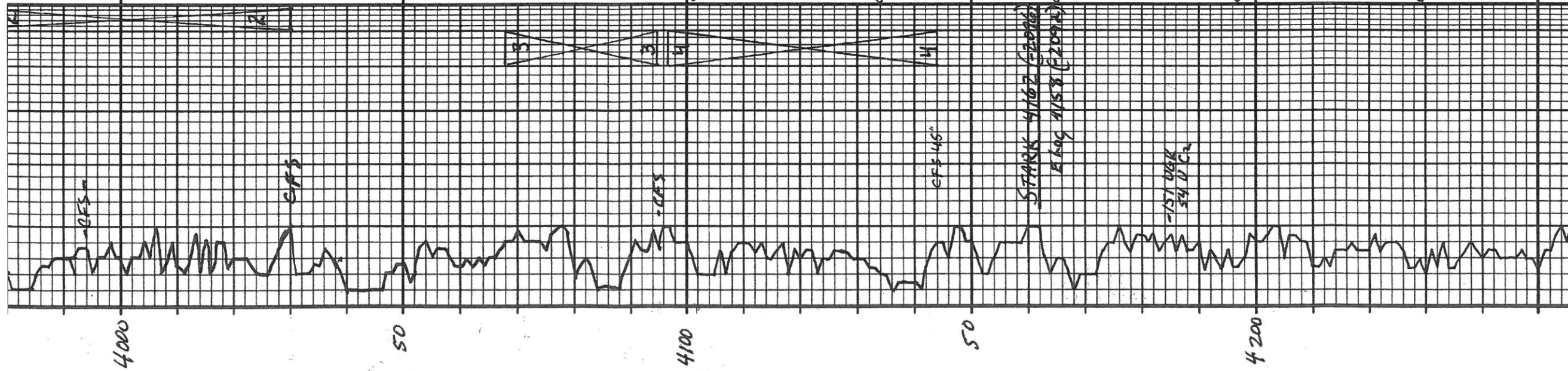
2670 Kick (BACKGROW)
 920-01

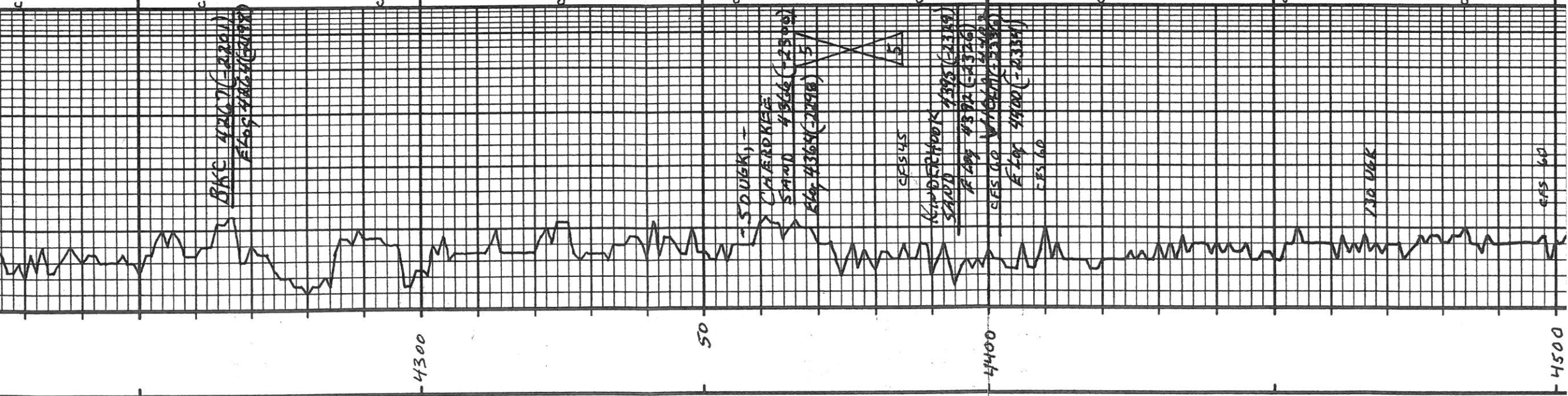
7 AM 6-7-17
 PREP FOR DST #4e
 MUD CHECK
 VIS: 5.3 WT: 8.9
 CHLOR: 4000 LCM: 4
 FILT: 8.8

DST #4 4097-4114
 30.75.60.90
 IF: build to 5 3/4, NO BB
 FF: build to 11"
 FSI: surf @ 45 min
 Rec: 120' GIP
 80' SgC OCM - 5% G, 10%
 60' SgC OCM - 5% G, 5%
 60' MCW - 84% W
 CHLOR: 78000
 FP: 39-60, 79-118
 SIP: 1332-1313
 HP: 1946-1938

1670 Kick (BACKGROW)
 61-02

LM - CRM, Fx, FEW FOS, CHRY, SATT PA 4068, N.S., TA WCHT, TA - CRM, Fx, PR VEG, S3 BLK RESID, A, ALKSTN, LA - TM, Fx, DSE, N.S., LA - TM, Fx, FEW FOS, SATT PR VEG, MOIST DSE, FEW PG W/ BLK HEAD, PRS, FROM ABOVE, CHY, W/ KRY, 005 IMPPT, SH-GY, DR GY, LA - TM, Fx, DSE, N.S., CHY - TM, Fx, FOS, SOME ZAN, CAL, SCATTER VEG, N.S., CHY - TM, FOS,	LM - TM, Fx, FOS, FR VEG, FOS, W/ BLK, SA - CHRY, NYNKA, DR, N.S. OIL,	LM - TM, Fx, FOS, MOSTLY DSE, FEW S3, VEG, Fx, AMI, CHA, CHY - TM, FOS, N.S.,	LM - TM, Fx, FOS, Fx, FOS, MOST DSE, FR AMT CHY, CHY - TM, FOS, N.S.,	LM - TM, Fx, DSE, CHY - AA, SA - GY, BLK, SOME PTR,	LM - TM, Fx, DSE, Fx, FOS, W/ BLK, TA - CRM, FRNGS W/ BLK TARRY OIL, SET OOL, VEG, LT ODR, " TAN, FXTLN, M, HRD, ABUN V, SML FOS + FRAGS, PXTLN + FOS, N.S.,	LS, WHT, CHILKY, S3 SL HRD, F, SET BRN OIL STNG, FEW O SPTS ON BR, LT ODR, WET	LS, TAN, GRY, FXTLN, SL GRULE, XT, HRD, G, PP INT, XTLN, F, S, F, G, S, S, FLAVOR STNG + FD, Y.S. F, G, S, S, BLEED, LT ODR	LS, WHT, F, XTLN, SOFT, CHLKY N, PR, SET, P, S, F, FLAVOR STNG, F, S, F, O, N, BRK, Y, ENERGY	LS, TAN, V, F, XTLN, DNS, HRD, N, O, APP, N.S.	LS, WHT, F, XTLN, S, M, HRD, S, C, E, P, SET, FILMY, EDGE STNG, LT ODR (T.P.S.), FLAVOR SHO, FEW, FD, SPTS ON BRK, NO VLS ENERGY	SH, GRY	LS, WHT, F, XTLN, SOFT, SL, ARTIL, G, W, XTLN, G, S, F, O, N, BR, LT OIL, G, FLAVOR, F, SHO, GAS, ABUN, S, HD, RKS, LT, ENERGY, G, ODR, LT OIL, RAINBOW	LS, A, INCR, SHO, HD, GAS, RES BLEEDING, G, ODR, G, XTLN, B	LS, CRM, F, XTLN, M, HRD, FOS, SET, LS, FRAGS, F, O, N.S.	LS, TAN, V, F, XTLN, DNS, HRD, TITE, N.S.	LS, TAN, BRN, F, XTLN, HRD, SET, LS, FRAGS, AND APP, SET, BLK, CHY - SET, FOS, FRAGS, W/ N.S.	SH, BLK, CAB	CHY, GRY, WHT, SL, TRIP, FRESH, N.S.	LS, TAN, V, F, XTLN, DNS, S, M, HRD, BRIL, AND VLS, N.S.	A.A.	LS, CRM, V, F, XTLN, DNS, RES, HRD, MOSTLY SOFT + ARTIL, SET, CHLKY, LS, AND APP, N.S.	A.A.	SS, V, F, G, R, N.S., W, S, O, R, T, W, R, O, D, SOFT, LT, GRY, C, M, T, S, L, F, R, I, A, B, L, E, N, P, S, G, O, N.S.	LS, TAN, F, XTLN, U, HRD, DNS, FEW, N.S.
---	--	---	---	---	--	--	---	---	--	--	---------	---	---	---	---	---	--------------	--------------------------------------	--	------	--	------	---	--





L.S. GRM. VE XTLM, DMS, PLS HRD, MOSTLY SOFT + BRILL, SET CHECK L.S. NO APP. NS	L.S. GRM. VE XTLM, DMS, PLS HRD, SOFT LT GRY CMT. SL FRIABLE. N. PLS. G. P.	L.S. TAN, EXTLM, V. HRD, DMS, FEW FOSS CASTS, TITE, NS	L.S. BRN. VE XTLM, HRD DMS, TITE, NS	SH. BLK, GRY	A.A.	L.S. CRM. TAN, F. M. XTLM, HRD, FEW FOSS, FAIR Q. NS	C. CHALK	L.S. BUFF. VE XTLM, DMS, M. HRD, V. BRILL, TITE, NS, ERACED	L.S. GRY, EXTLM, HRD, SL DMS, SCT. RE XTLD FRACS, SET CHT, PLS. APTICOT, TAN, OPAR, FRESH SHARP	L.S. TAN, VE XTLM, V. HRD, V. DMS, TITE, FEW SCT FOSS CASTS, NS	A.A.	L.S. WHT. VE XTLM, V. HRD, DMS, AND FOSS, TITE, NS	L.S. A.A.	122 v. PLS. RE. DMS. - 52 v. G.	SS. SML CLR + BRN GRM, F. SORT, G. P. RND + SUBRND, OIL COATD. (SAT), NO ODR, SCT. SML FLUR. FD. HRD, MOSTLY OIL WGT, V. LT ODR, CLR OIL, G. SEEN. BRK + TRAY	SH. VARI COLOR CHT. RED, APRICOT C. O. MGL, GRY SH W. RED CHT W/ M, CHT, MUSTARD, WNT-TRIP, FRESH, SHARP, PHOSPHATE NODS	SS. WHT + MILKY, ANG. V. SML → MED GRMS, SL HRD → V. HRD, G. LT → MED BRN OIL SAT, FST BLEED, SL. SH. GMS G. INT. GRM. P. G. SFO. O. BRK. FAT ODR, AND. F. WOR. LT ODR, M. BRN OIL 60" PLS. W. CMT. D. G. STMG, F. FOONBR	SS. CLR, ANG. M. W. CMT. D. V. HRD, F. G. SFO G. SFT. SCT. OIL BLEED, FAT ODR, FO. M CUP, RAINBOW W. 60" CHT-TRIP, WHT, PENC DOLD, TAN	CHT, WHT, FRESH, BLK RESIDUE, 2 PLS FO. SFT. 30" CHT, WHT FRESH, OIL STW FRACS, NS, FO, NO ODR L.S. WHT, CHT. Dolo - SUDY, DD. D. STW ↳ F. TD. M. HRD, MOKES, NO ODR, NS. P.	CHT, CH. M. A. WHT, FRESH, SHARP, ERACED DOLD, G. BRN GRM, F. XTLM, SL. GRAY, SOFT FAIR Q. NS, NO KICK, MSFO, NO ODR DOLD, WHT, M. GRM, S. APT, LT STMG, NS, FO, NO ODR	CHT, WHT, FRESH, NS	L.S. CRM. WHT, F. XTLM, HRD, NO VIS P. SET CHALK, NS	L.S. GRY, F. XTLM, V. HRD, DMS, SCT LG. FOSS, TITE, NS	CHALK, LG. CLR XTLS, BRN, V. G. INT XTLM, P. G. STMG, F. SFO, BLK → MED BRN OIL, PLAT → W. RND, DROPLETS, SL L. MY, M. ODR, NO FLUR, 1 PLS	DOLD, WHT, F. GRM. TRT, SOFT, F. INT. P. NS, NO ODR, CHT, GRY WHT, SHARP, NS	DOLD, SD, GRY GRM, F. GRMS, HRD W. CMT. D. V. P. E. NS	DOLD, SD, WHT, F. GRMS, S. APT, PLS FRIABLE, V. G. P. NS, NO KICK, 1 PLS. DB TARRY STMG	CHT, WHT, DK. BRN STRCS, SHARP
--	--	--	--------------------------------------	--------------	------	--	----------	---	---	---	------	--	-----------	---------------------------------	---	--	--	---	--	---	---------------------	---	---	---	--	---	---	--------------------------------

7:AM 6-8-17
 PRLG e 4308'
 MUD CHECK
 VIS: 54 WT: 9.1
 CHLOR: 5000 LCM: 4
 FILT: 9.0
 141 v. BAC. G. 8.4 v. G. 20
 470-C2, 10-C2, 6-C:

DST#5 4366-4385
 30.60.15.99
 IF: 44, NO BR
 FF: dead
 REC: 5'M
 FP: 35-29, 33-31 . NOK
 SIP: 35-35
 HP: 2091.2088

30 UGK
 30 v. KICK C-1 79 v. BAC
 7:AM 6-9-17 10906
 CFS e 4409 3400
 MUD CHECK
 VIS: 55 WT: 9.1
 CHLOR: 5000 LCM: 1
 FILT: 9.6

130-C1 13 UGK
 NO KICK (1030 BACKGROUND
 19-C2

30 UGK
 4366 (2389)
 4372 (2376)

30 UGK
 CHALK KICK
 4366 (-2389)
 4372 (-2376)

30 UGK
 4385 (2389)
 4392 (-2376)
 4398 (-2363)

130 UGK

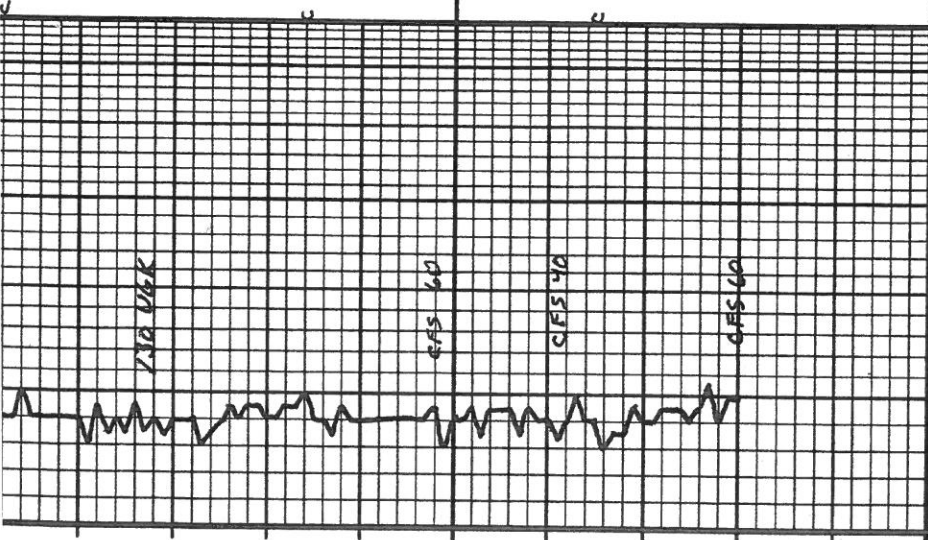
CFS 60

130' C.A 13 UGK

NO KICK (1030 BACKGROUND)
19-CR

CONDITION HOLE 1 3/4 HRS

DEPTH	DRILLING TIME Minutes/Foot	LITHOLOGY	SAMPLE DESCRIPTIONS	REMARKS
			LS, GRAY, F. XTLK, V. HRD, DMS, SET 16 FOS, TITE, MS	
			CHLC, LG. CLR XTLS, BRITL, V.G. INT XTLN, P. C. STMG, ESPO, BLK-SHIMED BRN OIL, PLATY, W. RAD. DROPLETS, SL LIMY, NO ODR, NO FLUR, 1 PE	
			DOLD, WHF, F.G. RMLR, TXT, SOFT F. INT, M. MS, NO ODR, CHT, GRAY WHF, SHARP, MS	
			DOLD, SD, GRAY, GRN, F. GRMS, HRD W. CNT'D, V.P. MS	
			DOLD, SD, WHF, F. GRMS, SOFT, RES FRIBLE, V.G. P. MS, NO KICK, 1 PE. DB TARRY STMG	
			CHT, WHF, DS BRN STRKS, SHARP FRESH, MS	
			LS, BUFF, F. M. XTLN, FEW LG XTLS W/ N. S. M. HRD, BRITL, F. G. P. STERS, MS, NO KICK	
			CHT, WHF, GRY, SHARP, FRESH MS	
			CHT, WHF, GRY, BRN, SHARP, FRESH, MS	

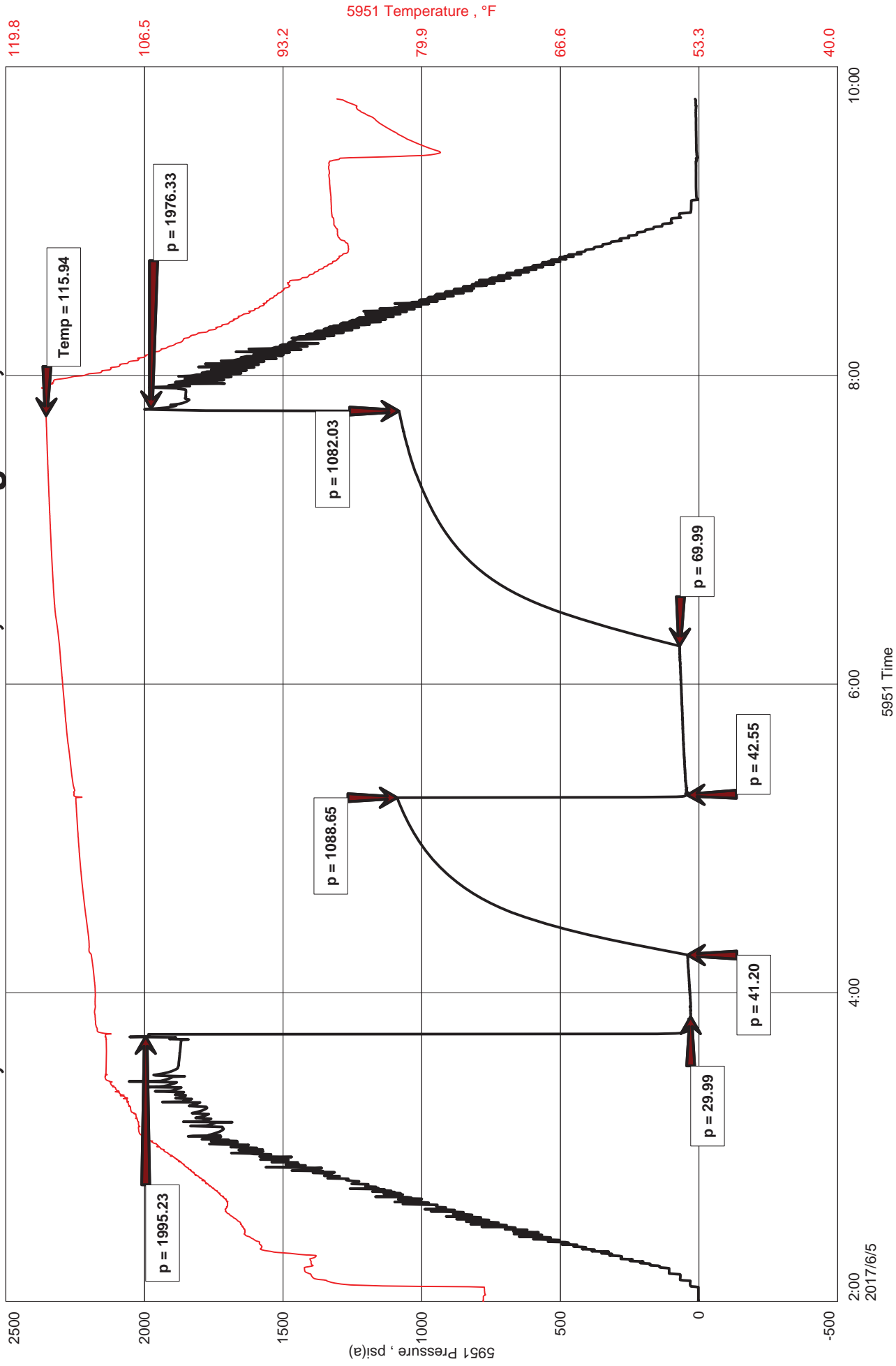


COMPANY Trans Pacific Oil Corporation
 LEASE Mc Mannis B Unit 1-34
 LOCATION 105' E 34, 840' FWL SEC 34 TWP 26S RNG 15W
 COUNTY Pratt STATE Kansas

ELEVATION: K.B. 2066

Trans Pacific Oil Corp
Start Test Date: 2017/06/05
Final Test Date: 2017/06/05

McMannis 'B' Unit #1-34
Formation: DST #1, Lansing A&B, 3937'-3974'
DST #1, McMannis 'B' Unit #1-34, Lansing A&B, 3937'-3974' Job Number: F478





DIAMOND TESTING
 P.O. Box 157
 HOISINGTON, KANSAS 67544
 (800) 542-7313
DRILL-STEM TEST TICKET
 FILE: MCMANNIS BID 571

ON LOCATION:	<u>00:25</u>
START RECORDERS:	<u>01:40</u>
STOP RECORDERS:	<u>09:49</u>

Company TRANS PACIFIC OIL CORP Lease & Well No. MCMANNIS 'B' UNIT #1-34
 Contractor STERLING DRLE. REG #4 Charge to T.P.O.C.
 Elevation 2066' KB Formation LANSING A & B Effective Pay _____ Ft. Ticket No. F478
 Date 6-5-17 Sec. 34 Twp. 26 S Range 15 W County PRATT State KS
 Test Approved By BRYCE BEDREMAN Diamond Representative JAKE FAHRENBRUCH

Formation Test No. 1 Interval Tested from 3937 ft. to 3974 ft. Total Depth 3974 ft.
 Packer Depth 3932 ft. Size 6 3/4 in. Packer depth _____ ft. Size 6 3/4 in.
 Packer Depth 3937 ft. Size 6 3/4 in. Packer depth _____ ft. Size 6 3/4 in.
 Depth of Selective Zone Set _____

Top Recorder Depth (Inside) 3939 ft. Recorder Number 5951 Cap. 6000 P.S.I.
 Bottom Recorder Depth (Outside) 3940 ft. Recorder Number 5586 Cap. 6000 P.S.I.
 Below Straddle Recorder Depth _____ ft. Recorder Number _____ Cap. _____ P.S.I.

Mud Type CHEMICAL Viscosity 51 (4# LCM) Drill Collar Length 210 ft. I.D. 2 1/4 in.
 Weight 9.0 Water Loss 9.0 cc. Weight Pipe Length _____ ft. I.D. 2 7/8 in.
 Chlorides 2000 P.P.M. Drill Pipe Length 3698 ft. I.D. 3 1/2 in.
 Jars: Make STERLING Serial Number #5 S.J. Test Tool Length 23 ft. Tool Size 3 1/2-IF in.
 Did Well Flow? _____ Reversed Out _____ Anchor Length 37 ft. Size 4 1/2-FH in.
 Main Hole Size 7 7/8 Tool Joint Size 4 1/2 XH in. ALL PERFE Surface Choke Size 1 in. Bottom Choke Size 5/8 in.

Blow: 1st Open: BOB IN 15 SECONDS. No BB.
 2nd Open: BOB IN 6 SECONDS. No GTS. No BB.

Recovered 60 ft. of GCOM 15" gas, 30" oil, 55" mud
 Recovered 60 ft. of GC SMC OCM 10" gas, 20" oil, 2" wtr, 68" mud

Recovered _____ ft. of _____
 Recovered _____ ft. of _____
 Recovered _____ ft. of _____
 Recovered _____ ft. of _____

Remarks: TOTAL RECOVERED FLUID: 120
2512' OF GAS IN PIPE
not enough water to check chlorides.
 Price Job _____
 Other Charges _____
SAFETY JOINT
38 MRT (PRATT)
 Total _____

Time Set Packer(s) 03:45 A.M. P.M. Time Started Off Bottom 07:45 A.M. P.M. Maximum Temperature 116°F

Initial Hydrostatic Pressure (A) 1995 P.S.I.
 Initial Flow Period Minutes 30 (B) 30 P.S.I. to (C) 41 P.S.I.
 Initial Closed In Period Minutes 60 (D) 1089 P.S.I.
 Final Flow Period Minutes 60 (E) 43 P.S.I. to (F) 70 P.S.I.
 Final Closed In Period Minutes 90 (G) 1082 P.S.I. Thanks!
 Final Hydrostatic Pressure (H) 1976 P.S.I. Jake Fahrenbruch

Diamond Testing shall not be liable for damages of any kind to the property or personnel of the one for whom a test is made or for any loss suffered or sustained, directly or indirectly, through the use of its equipment, or its statement or opinion concerning the result of any test. Tools lost or damaged in the hole shall be paid for at cost by the party for whom the test is made.



DIAMOND TESTING
 P.O. Box 157
 HOISINGTON, KANSAS 67544
 (800) 542-7313

TIME ON: 01:40
 TIME OFF: 09:49

DRILL-STEM TEST TICKET
 FILE: MCMANNISB1DST1

Company Trans Pacific Oil Corp. Lease & Well No. McMannis 'B' Unit #1-34
 Contractor Sterling Drlg. Rig #4 Charge to T.P.O.C.
 Elevation 2066' KB Formation Lansing "A&B" Effective Pay _____ Ft. Ticket No. F478
 Date 6/5/17 Sec. 34 Twp. 26 S Range 15 W County Pratt State KANSAS
 Test Approved By Bryce Bidleman Diamond Representative Jake Fahrenbruch

Formation Test No. 1 Interval Tested from 3937 ft. to 3974 ft. Total Depth 3974 ft.
 Packer Depth 3932 ft. Size 6 3/4 in. Packer depth ----- ft. Size 6 3/4 in.
 Packer Depth 3937 ft. Size 6 3/4 in. Packer depth ----- ft. Size 6 3/4 in.
 Depth of Selective Zone Set -----

Top Recorder Depth (Inside) 3939 ft. Recorder Number 5951 Cap. 5000 P.S.I.
 Bottom Recorder Depth (Outside) 3940 ft. Recorder Number 5586 Cap. 5000 P.S.I.
 Below Straddle Recorder Depth ----- ft. Recorder Number ----- Cap. ----- P.S.I.

Mud Type CHEMICAL Viscosity 51 (4# LCM) Drill Collar Length 216 ft. I.D. 2 1/4 in.
 Weight 9.0 Water Loss 9.0 cc. Weight Pipe Length 0 ft. I.D. 2 7/8 in.
 Chlorides 2,000 P.P.M. Drill Pipe Length 3,698 ft. I.D. 3 1/2 in.
 Jars: Make STERLING Serial Number #5 Safety Joint Test Tool Length 23 ft. Tool Size 3 1/2-IF in.
 Did Well Flow? ----- Reversed Out ----- Anchor Length 37 ft. Size 4 1/2-FH in.
 Main Hole Size 7 7/8 Tool Joint Size 4 1/2 XH in. ALL PERF Surface Choke Size 1 in. Bottom Choke Size 5/8 in.

Blow: 1st Open: BOB in 15 seconds. No blowback.
 2nd Open: BOB in 6 seconds. No GTS. No blowback.

Recovered 60 ft. of GCOM 15% gas, 30% oil, 55% mud
 Recovered 60 ft. of GCSWCOCM 10% gas, 20% oil, 2% wtr, 68% mud
 Recovered _____ ft. of _____
 Recovered _____ ft. of _____
 Recovered _____ ft. of _____
 Recovered _____ ft. of _____

Remarks: TOTAL RECOVERED FLUID: 120'
2512' of Gas In Pipe
not enough water to check chlorides.

Time Set Packer(s) <u>03:45</u>	A.M. P.M.	Time Started Off Bottom <u>07:45</u>	A.M. P.M.	Maximum Temperature <u>116 F</u>
Initial Hydrostatic Pressure..... (A)		<u>1995</u>		P.S.I.
Initial Flow Period..... Minutes <u>30</u>	(B)	<u>30</u>	P.S.I. to (C)	<u>41</u> P.S.I.
Initial Closed In Period..... Minutes <u>60</u>	(D)	<u>1089</u>		P.S.I.
Final Flow Period..... Minutes <u>60</u>	(E)	<u>43</u>	P.S.I. to (F)	<u>70</u> P.S.I.
Final Closed In Period..... Minutes <u>90</u>	(G)	<u>1082</u>		P.S.I.
Final Hydrostatic Pressure..... (H)		<u>1976</u>		P.S.I.

Diamond Testing shall not be liable for damages of any kind to the property or personnel of the one for whom a test is made or for any loss suffered or sustained, directly or indirectly, through the use of its equipment, or its statement or opinion concerning the result of any test. Tools lost or damaged in the hole shall be paid for at cost by the party for whom the test is made.

DIAMOND TESTING GENERAL REPORT

Jake Fahrenbruch, Tester

Cell: (620) 282-8977 / Office: (800) 542-7313

DIAMOND TESTING



TEST INFORMATION

Well Name	McMannis 'B' Unit #1-34
Company Name	Trans Pacific Oil Corp
Formation	DST #2, Lansing CDEF, 3975'-4030'
Test Type	Bottom-Hole w/safety joint
Surface Location	Sec 34-26s-15w
KB Elevation (SL)	2066.000
Gauge Name	5951
Start Test Date	2017/06/05
Start Test Time	20:10:00
Final Test Date	2017/06/06
Final Test Time	04:42:00
Job Number	F479
Contact	Bryce Bidleman
Site Contact	Bryce Bidleman

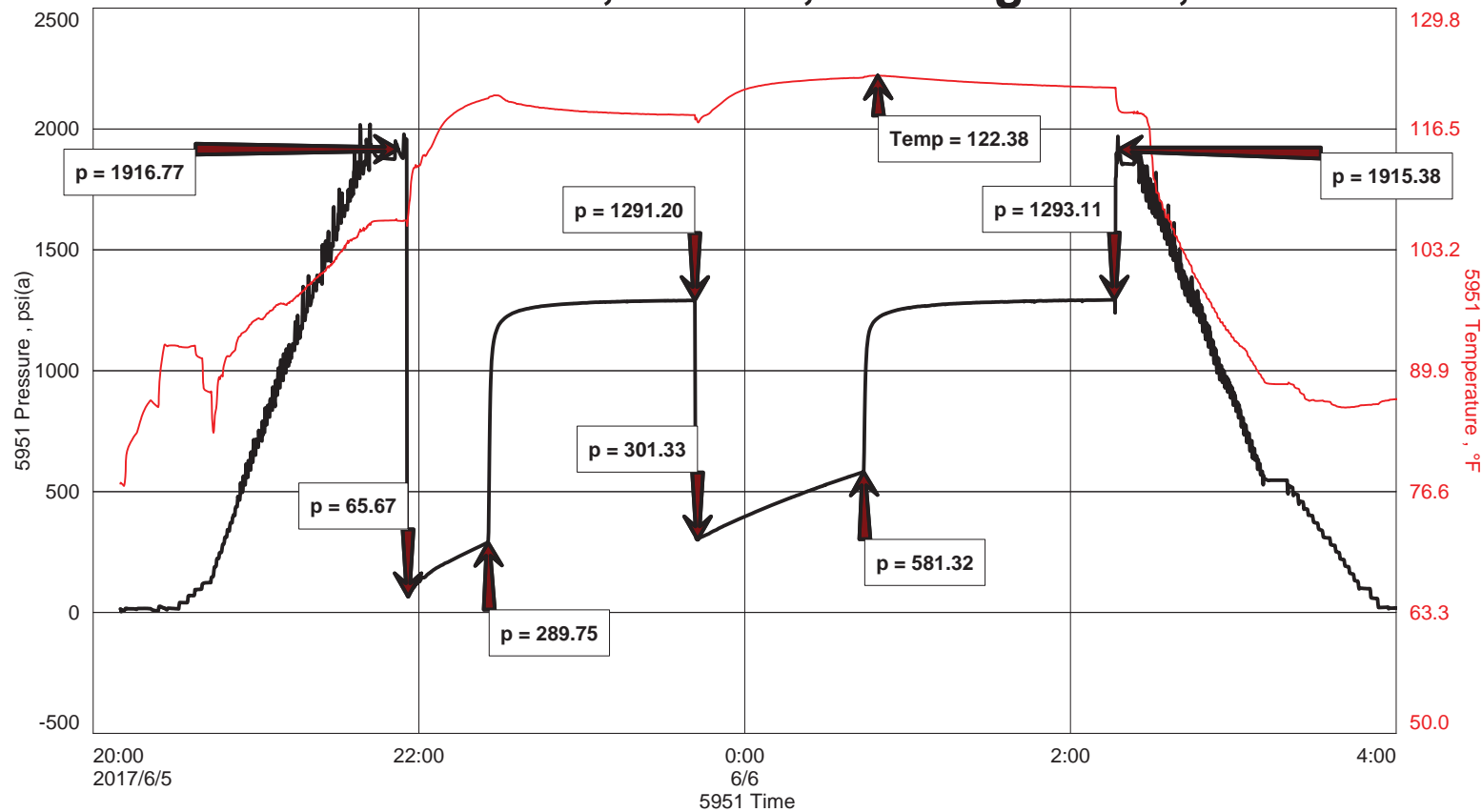
TEST RESULTS

Initial flow, blow inc to BOB in 3 minutes. Blowback increased to 3".
 Final flow, blow inc to BOB in 6 minutes 50 seconds. Blowback increased to BOB.

TOTAL RECOVERED FLUID: 1185'

- 240' WM 42% wtr, 58% mud
- 945' W 100% wtr
- 500' Gas In Pipe
- Chlorides: 99,000 PPM
- RW: .08 ohm @ 70 Deg F
- PH: 7.0

McMannis 'B' Unit #1-34, DST #2, Lansing CDEF, 3975'-4030'





DIAMOND TESTING
 P.O. Box 157
 HOISINGTON, KANSAS 67544
 (800) 542-7313
DRILL-STEM TEST TICKET
 FILE: MCMANNIS BIDST2

ON LOCATION:	<u>19:45</u>
START RECORDERS:	<u>20:10 6-5</u>
STOP RECORDERS:	<u>04:42 6-6</u>

Company TRANS PACIFIC OIL CORP Lease & Well No. MCMANNIS 'B' UNIT #1-34
 Contractor STERLING DRUG RIG #4 Charge to T.P.O.C.
 Elevation 2066' KB Formation LANSING CDEF Effective Pay _____ Ft. Ticket No. F479
 Date 6/6/17 Sec. 34 Twp. 26S Range 15N County PRAIRIE State KS
 Test Approved By BRYLE BIDDLEMAN Diamond Representative JAKE FAHRENBRUCH

Formation Test No. 2 Interval Tested from 3975 ft. to 4030 ft. Total Depth 4030 ft.
 Packer Depth 3970 ft. Size 6 3/4 in. Packer depth _____ ft. Size 6 3/4 in.
 Packer Depth 3975 ft. Size 6 3/4 in. Packer depth _____ ft. Size 6 3/4 in.

Depth of Selective Zone Set _____
 Top Recorder Depth (Inside) 3977 ft. Recorder Number 5951 Cap. 6000 P.S.I.
 Bottom Recorder Depth (Outside) 3978 ft. Recorder Number 5586 Cap. 6000 P.S.I.
 Below Straddle Recorder Depth _____ ft. Recorder Number _____ Cap. _____ P.S.I.
 Mud Type Chemical Viscosity 51 (4#2CM) Drill Collar Length 216 ft. I.D. 2 1/4 in.
 Weight 9.0 Water Loss 9.0 cc. Weight Pipe Length _____ ft. I.D. 2 7/8 in.
 Chlorides 2000 P.P.M. Drill Pipe Length 3736 ft. I.D. 3 1/2 in.
 Jars: Make STERLING Serial Number #5 SJ Test Tool Length 23 ft. Tool Size 3 1/2-IF in.
 Did Well Flow? _____ Reversed Out _____ Anchor Length 55 ft. Size 4 1/2-FH in.
 Main Hole Size 7 7/8 Tool Joint Size 4 1/2 XH in. Surface Choke Size 2 1/2 in. Bottom Choke Size 5/8 in.

Blow: 1st Open: BLOW INC. TO BOB IN 3 MIN. BLOW BACK @ 3"
 2nd Open: BLOW INC TO BOB IN 6min 50sec. BLOWBACK @ BOB

Recovered 240 ft. of WM 42" wtr, 58" mud
 Recovered 945 ft. of W 100% wtr
 Recovered _____ ft. of 500' GIP
 Recovered _____ ft. of _____

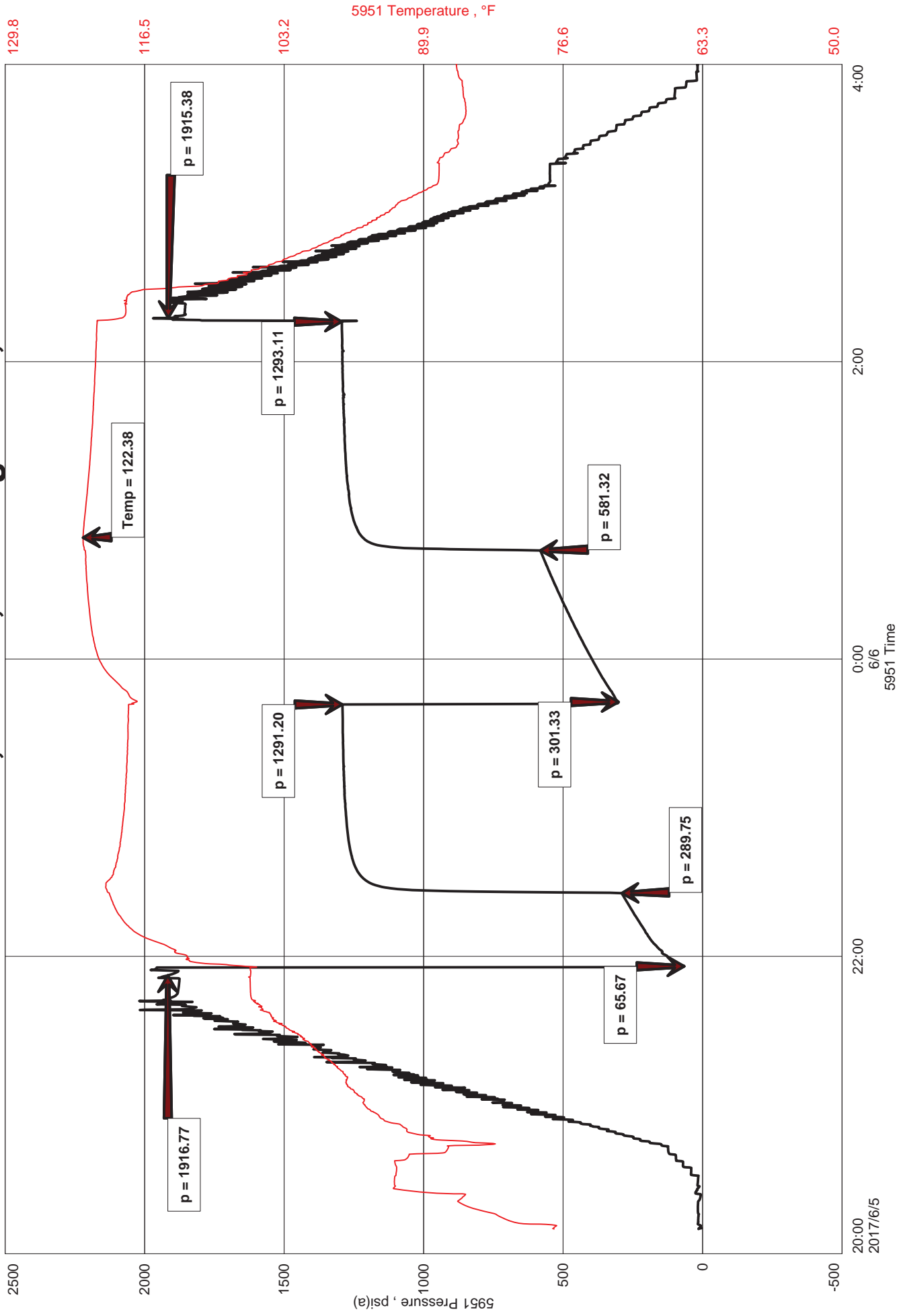
Recovered _____ ft. of _____	Price Job
Recovered _____ ft. of _____	Other Charges
Remarks: <u>TOTAL RECOVERED FLUID: 1185'</u>	<u>Safety Joint</u>
<u>Chlorides: 99,000 PPM</u>	<u>38 MRT (PRAIRIE)</u>
<u>RW: .082 @ 70F</u> <u>PH: 7.0</u>	Total

Time Set Packer(s) 21:56 A.M. P.M. Time Started Off Bottom 02:11 A.M. P.M. Maximum Temperature 122 F

Initial Hydrostatic Pressure _____ (A) 1917 P.S.I.
 Initial Flow Period _____ Minutes 30 (B) 66 P.S.I. to (C) 290 P.S.I.
 Initial Closed In Period _____ Minutes 75 (D) 1291 P.S.I.
 Final Flow Period _____ Minutes 60 (E) 301 P.S.I. to (F) 581 P.S.I.
 Final Closed In Period _____ Minutes 90 (G) 1293 P.S.I. Thanks!
 Final Hydrostatic Pressure _____ (H) 1915 P.S.I. Prot & Fahrenbruch

Diamond Testing shall not be liable for damages of any kind to the property or personnel of the one for whom a test is made or for any loss suffered or sustained, directly or indirectly, through the use of its equipment, or its statement or opinion concerning the result of any test. Tools lost or damaged in the hole shall be paid for at cost by the party for whom the test is made.

McMannis 'B' Unit #1-34, DST #2, Lansing CDEF, 3975'-4030'





DIAMOND TESTING
 P.O. Box 157
 HOISINGTON, KANSAS 67544
 (800) 542-7313

TIME ON: 20:10 6/5
 TIME OFF: 04:42 6/6

DRILL-STEM TEST TICKET
 FILE: MCMANNISB1DST2

Company Trans Pacific Oil Corp. Lease & Well No. McMannis 'B' Unit #1-34
 Contractor Sterling Drlg. Rig #4 Charge to T.P.O.C.
 Elevation 2066' KB Formation Lansing CDEF Effective Pay _____ Ft. Ticket No. F479
 Date 6/6/17 Sec. 34 Twp. 26 S Range 15 W County Pratt State KANSAS
 Test Approved By Bryce Bidleman Diamond Representative Jake Fahrenbruch

Formation Test No. 2 Interval Tested from 3975 ft. to 4030 ft. Total Depth 4030 ft.
 Packer Depth 3970 ft. Size 6 3/4 in. Packer depth ----- ft. Size 6 3/4 in.
 Packer Depth 3975 ft. Size 6 3/4 in. Packer depth ----- ft. Size 6 3/4 in.
 Depth of Selective Zone Set -----

Top Recorder Depth (Inside) 3977 ft. Recorder Number 5951 Cap. 5000 P.S.I.
 Bottom Recorder Depth (Outside) 3978 ft. Recorder Number 5586 Cap. 5000 P.S.I.
 Below Straddle Recorder Depth ----- ft. Recorder Number ----- Cap. ----- P.S.I.

Mud Type CHEMICAL Viscosity 51 (4# LCM) Drill Collar Length 216 ft. I.D. 2 1/4 in.
 Weight 9.0 Water Loss 9.0 cc. Weight Pipe Length 0 ft. I.D. 2 7/8 in.
 Chlorides 2,000 P.P.M. Drill Pipe Length 3,736 ft. I.D. 3 1/2 in.
 Jars: Make STERLING Serial Number #5 Safety Joint Test Tool Length 23 ft. Tool Size 3 1/2-IF in.
 Did Well Flow? ----- Reversed Out ----- Anchor Length 55 ft. Size 4 1/2-FH in.
 Main Hole Size 7 7/8 Tool Joint Size 4 1/2 XH in. 21' Perf in anchor Surface Choke Size 1 in. Bottom Choke Size 5/8 in.

Blow: 1st Open: Blow inc to BOB in 3 minutes. Blowback inc to 3"
 2nd Open: Blow inc to BOB in 6 minutes 50 seconds. blowback inc to BOB.

Recovered 240 ft. of WM 42% wtr, 58% mud
 Recovered 945 ft. of W 100% wtr
 Recovered _____ ft. of 500' Gas In Pipe
 Recovered _____ ft. of _____
 Recovered _____ ft. of _____
 Recovered _____ ft. of _____

Remarks: TOTAL RECOVERED FLUID: 1185'
Chlorides: 99,000 PPM
RW: .08 @ 70 F PH: 7.0

Time Set Packer(s) 21:56 A.M. P.M. Time Started Off Bottom 02:11 A.M. P.M. Maximum Temperature 122 F

Initial Hydrostatic Pressure..... (A) 1917 P.S.I.
 Initial Flow Period..... Minutes 30 (B) 66 P.S.I. to (C) 290 P.S.I.
 Initial Closed In Period..... Minutes 75 (D) 1291 P.S.I.
 Final Flow Period..... Minutes 60 (E) 301 P.S.I. to (F) 581 P.S.I.
 Final Closed In Period..... Minutes 90 (G) 1293 P.S.I.
 Final Hydrostatic Pressure..... (H) 1915 P.S.I.

Diamond Testing shall not be liable for damages of any kind to the property or personnel of the one for whom a test is made or for any loss suffered or sustained, directly or indirectly, through the use of its equipment, or its statement or opinion concerning the result of any test. Tools lost or damaged in the hole shall be paid for at cost by the party for whom the test is made.

DIAMOND TESTING GENERAL REPORT

Jake Fahrenbruch, Tester

Cell: (620) 282-8977 / Office: (800) 542-7313

DIAMOND TESTING



TEST INFORMATION

Well Name	McMannis 'B' Unit #1-34
Company Name	Trans Pacific Oil Corp
Formation	DST #3, Lansing 'H', 4068'-4095'
Test Type	Bottom-Hole w/safety joint
Surface Location	Sec 34-26s-15w-Pratt Co.-KS
KB Elevation (SL)	2066.000
Gauge Name	5951
Start Test Date	2017/06/06
Start Test Time	15:10:00
Final Test Date	2017/06/07
Final Test Time	00:07:00
Job Number	F480
Contact	Bryce Bidleman
Site Contact	Max Lovely

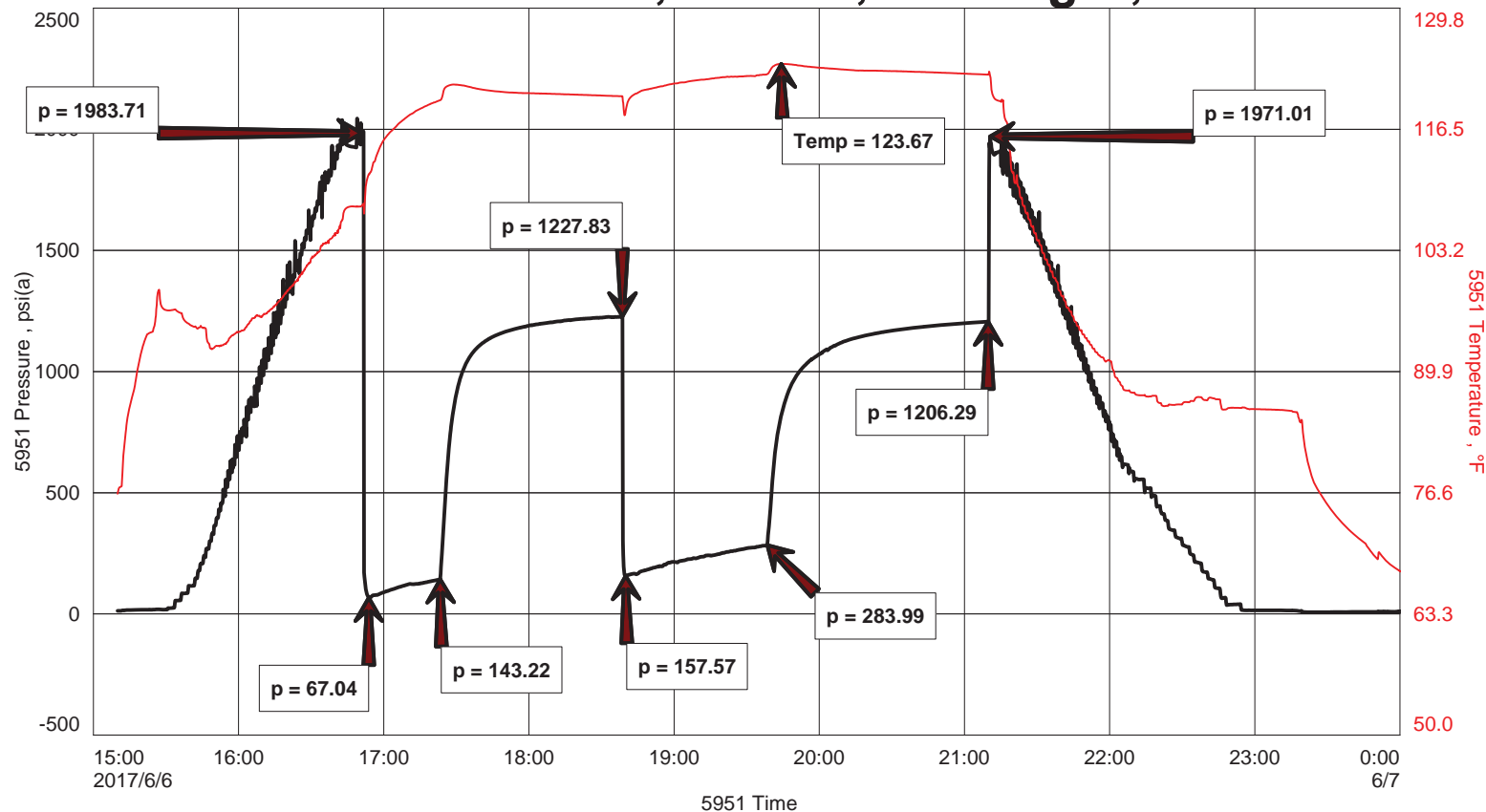
TEST RESULTS

Initial flow, BOB 28 sec. GTS 22 min. Blowback @ BOB in 12 min.
 Final flow, BOB 1 minute. Gauge gas. Blowback @ BOB in 10 minutes.

TOTAL RECOVERED FLUID: 1195'

- 995' Clean Gassy Oil (est 25% gas, 75% oil)
- 180' HvyGC WMCO 38% gas, 35% oil, 12% wtr, 15% mud
- 60' HvyGC OMCW 30% gas, 10% oil, 40% wtr, 20% mud
- Gas in all fluid free pipe ---- Gravity: 32.5 @ 60 F ----
- Chlorides: 150,000 PPM ---- RW: .06 ohm @ 70 F ---- PH: 8.0 ----

McMannis 'B' Unit #1-34, DST #3, Lansing H, 4068'-4095'





DIAMOND TESTING
 P.O. Box 157
 HOISINGTON, KANSAS 67544
 (800) 542-7313
DRILL-STEM TEST TICKET
 FILE: MC MANNIS B1 DST3

ON LOCATION:	<u>14:52</u>
START RECORDERS:	<u>15:10</u>
STOP RECORDERS:	<u>00:07 6-7-17</u>

Company TRANS PACIFIC OIL CORP Lease & Well No. MC MANNIS 'B' UNIT #1-34
 Contractor STERLING DRILG REG #4 Charge to T.P.O.C.
 Elevation 2066' KB Formation LANSING "H" Effective Pay _____ Ft. Ticket No. F480
 Date 6-6-17 Sec. 34 Twp. 26 S Range 15 W County PRATT State KS
 Test Approved By BRYLE BEPLEMAN Diamond Representative JAKE FAHRENBRUCH

Formation Test No. 3 Interval Tested from 4068 ft. to 4095 ft. Total Depth 4095 ft.
 Packer Depth 4063 ft. Size 6 3/4 in. Packer depth _____ ft. Size 6 3/4 in.
 Packer Depth 4068 ft. Size 6 3/4 in. Packer depth _____ ft. Size 6 3/4 in.

Depth of Selective Zone Set _____
 Top Recorder Depth (Inside) 4070 ft. Recorder Number 5951 Cap. 6000 P.S.I.
 Bottom Recorder Depth (Outside) 4071 ft. Recorder Number 5586 Cap. 6000 P.S.I.
 Below Straddle Recorder Depth _____ ft. Recorder Number _____ Cap. _____ P.S.I.

Mud Type CHEMICAL Viscosity 61 (4" x 2cm) Drill Collar Length 216 ft. I.D. 2 1/4 in.
 Weight 9.0 Water Loss 9.8 cc. Weight Pipe Length _____ ft. I.D. 2 7/8 in.
 Chlorides 4000 P.P.M. Drill Pipe Length 3829 ft. I.D. 3 1/2 in.
 Jars: Make STERLING Serial Number #5 S.J. Test Tool Length 23 ft. Tool Size 3 1/2-IF in.
 Did Well Flow? GTS Reversed Out _____ Anchor Length 27 ft. Size 4 1/2-FH in.
 Main Hole Size 7 7/8 Tool Joint Size 4 1/2 XH in. Surface Choke Size 1 in. Bottom Choke Size 5/8 in.

Blow: 1st Open: BOB 28 SEC. GTS 22 MIN. BB @ BOB IN 12 MIN
 2nd Open: BOB 1 MIN. GAUGE GAS, BB @ BOB IN 10 MIN

Recovered 955 ft. of Clean Gassy Oil (est 25% gas, 75% oil)
 Recovered 180 ft. of Hvy GC WMCO 38% gas, 35% oil, 12% wtr, 15% mod
 Recovered 600 ft. of Hvy GC OMCW 30% gas, 10% oil, 40% wtr, 20% mod
 Recovered _____ ft. of Chlorides = 150,000 PPM

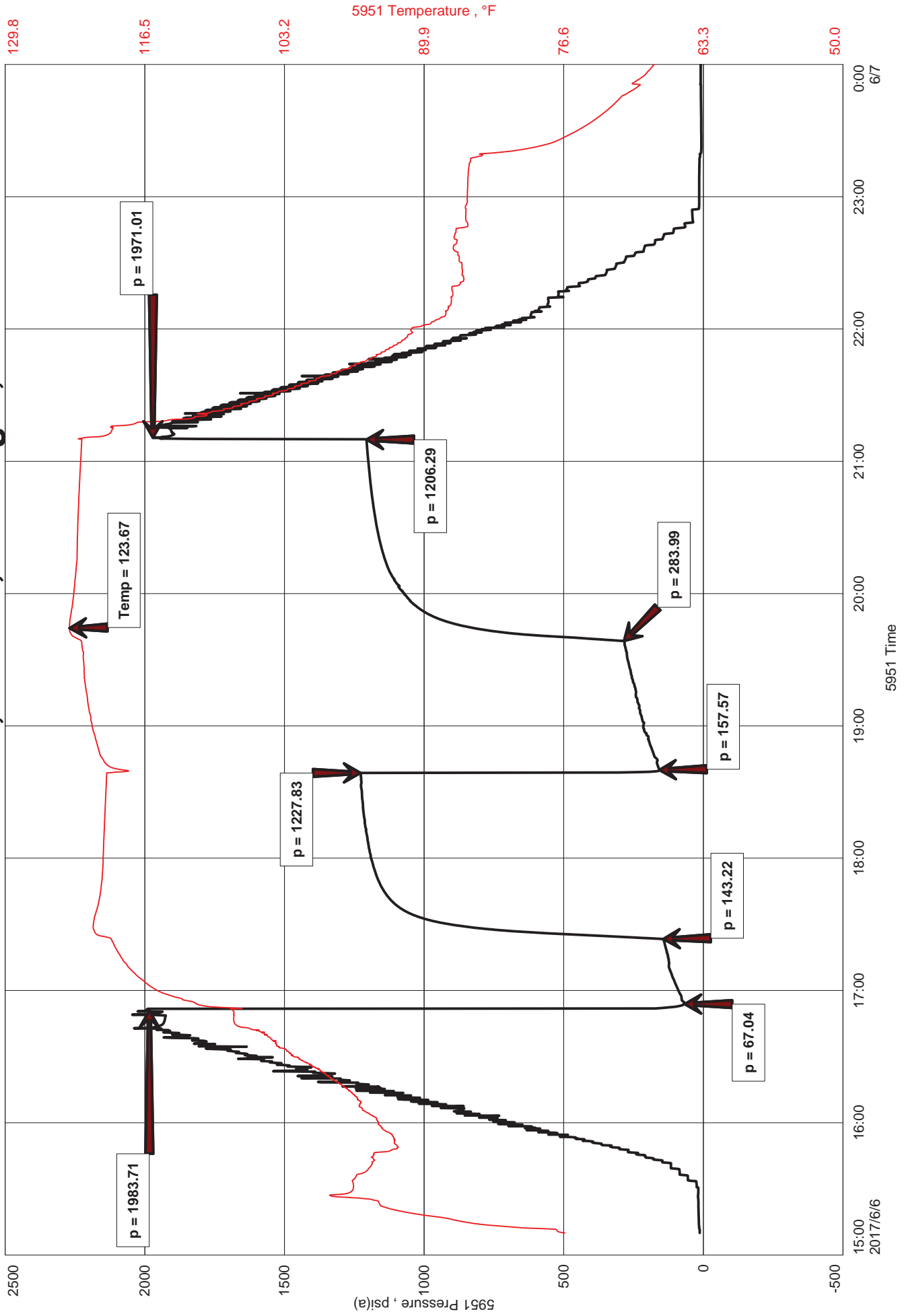
Recovered _____ ft. of <u>GRAVITY = 32 1/2 @ 60°F</u>	Price Job
Recovered _____ ft. of <u>RW = .06 @ 70°F PH = 8.0</u>	Other Charges
Remarks: <u>TOTAL RECOVERED FLUID = 1195'</u>	<u>Safety Joint</u>
<u>GAS IN ALL FLUID FREE PIPE</u>	<u>38 MRT (PRATT)</u>
	Total

Time Set Packer(s) 16:55 A.M. P.M. Time Started Off Bottom 21:10 A.M. P.M. Maximum Temperature 123°F

Initial Hydrostatic Pressure _____ (A) 1984 P.S.I.
 Initial Flow Period _____ Minutes 30 (B) 67 P.S.I. to (C) 143 P.S.I.
 Initial Closed In Period _____ Minutes 75 (D) 1228 P.S.I.
 Final Flow Period _____ Minutes 60 (E) 158 P.S.I. to (F) 284 P.S.I.
 Final Closed In Period _____ Minutes 90 (G) 1206 P.S.I. Thanks!
 Final Hydrostatic Pressure _____ (H) 1971 P.S.I. Jacob V. Johnson

Diamond Testing shall not be liable for damages of any kind to the property or personnel of the one for whom a test is made or for any loss suffered or sustained, directly or indirectly, through the use of its equipment, or its statement or opinion concerning the result of any test. Tools lost or damaged in the hole shall be paid for at cost by the party for whom the test is made.

McMannis 'B' Unit #1-34, DST #3, Lansing H, 4068'-4095'





DIAMOND TESTING
 P.O. Box 157
 HOISINGTON, KANSAS 67544
 (800) 542-7313

TIME ON: 15:10 6/6
 TIME OFF: 00:07 6/7

DRILL-STEM TEST TICKET
 FILE: MCMANNISB1DST3

Company Trans Pacific Oil Corp. Lease & Well No. McMannis 'B' Unit #1-34
 Contractor Sterling Drlg. Rig #4 Charge to T.P.O.C.
 Elevation 2066' KB Formation Lansing "H" Effective Pay _____ Ft. Ticket No. F480
 Date 6/6/17 Sec. 34 Twp. 26 S Range 15 W County Pratt State KANSAS
 Test Approved By Bryce Bidleman Max Lovely Diamond Representative Jake Fahrenbruch

Formation Test No. 3 Interval Tested from 4068 ft. to 4095 ft. Total Depth 4095 ft.
 Packer Depth 4063 ft. Size 6 3/4 in. Packer depth _____ ft. Size 6 3/4 in.
 Packer Depth 4068 ft. Size 6 3/4 in. Packer depth _____ ft. Size 6 3/4 in.
 Depth of Selective Zone Set _____

Top Recorder Depth (Inside) 4070 ft. Recorder Number 5951 Cap. 6000 P.S.I.
 Bottom Recorder Depth (Outside) 4071 ft. Recorder Number 5586 Cap. 6000 P.S.I.
 Below Straddle Recorder Depth _____ ft. Recorder Number _____ Cap. _____ P.S.I.

Mud Type CHEMICAL Viscosity 61 (4# LCM) Drill Collar Length 216 ft. I.D. 2 1/4 in.
 Weight 9.0 Water Loss 9.8 cc. Weight Pipe Length 0 ft. I.D. 2 7/8 in.
 Chlorides 4,000 P.P.M. Drill Pipe Length 3,829 ft. I.D. 3 1/2 in.
 Jars: Make STERLING Serial Number #5 Safety Joint Test Tool Length 23 ft. Tool Size 3 1/2-IF in.
 Did Well Flow? GTS Reversed Out _____ Anchor Length 27 ft. Size 4 1/2-FH in.
 Main Hole Size 7 7/8 Tool Joint Size 4 1/2 XH in. Surface Choke Size 1 in. Bottom Choke Size 5/8 in.

Blow: 1st Open: BOB 28 seconds, GTS 22 minutes. Blowback @ BOB in 12 minutes.
 2nd Open: BOB 1 minute, Guage Gas. Blowback @ BOB in 10 minutes.

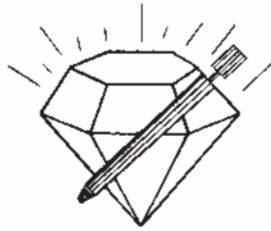
Recovered 955 ft. of Clean Gassy Oil (est 25% gas, 75% oil)
 Recovered 180 ft. of Hvy GC WMCO 38% gas, 35% oil, 12% wtr, 15% mud
 Recovered 60 ft. of Hvy GC OMCW 30% gas, 10% oil, 40% wtr, 20% mud

Recovered _____ ft. of _____	Chlorides: 150,000 PPM	
Recovered _____ ft. of _____	Gravity: 32.5 @ 60 F	Price Job
Recovered _____ ft. of _____	RW: .06 ohm @ 70 F PH: 8.0	Other Charges
Remarks: <u>TOTAL RECOVERED FLUID: 1195'</u>		Insurance
<u>Gas in all fluid free pipe</u>		Total

Time Set Packer(s) 16:55 A.M. P.M. Time Started Off Bottom 21:10 A.M. P.M. Maximum Temperature 123 F

Initial Hydrostatic Pressure..... (A) 1984 P.S.I.
 Initial Flow Period..... Minutes 30 (B) 67 P.S.I. to (C) 143 P.S.I.
 Initial Closed In Period..... Minutes 75 (D) 1228 P.S.I.
 Final Flow Period..... Minutes 60 (E) 158 P.S.I. to (F) 284 P.S.I.
 Final Closed In Period..... Minutes 90 (G) 1206 P.S.I.
 Final Hydrostatic Pressure..... (H) 1971 P.S.I.

Diamond Testing shall not be liable for damages of any kind to the property or personnel of the one for whom a test is made or for any loss suffered or sustained, directly or indirectly, through the use of its equipment, or its statement or opinion concerning the result of any test. Tools lost or damaged in the hole shall be paid for at cost by the party for whom the test is made.



DIAMOND TESTING
P. O. Box 157
HOISINGTON, KANSAS 67544
(316) 653-7550
GAS VOLUME REPORT

Company Trans Pacific Oil Corp Lease & Well No. McMannis 'B' Unit #1-34
Date 6/6/17 Sec. 34 Twp. 26S Rge. 15W Location _____ County Pratt State KS
Drilling Contractor Sterling Drlg. Rig #4 Formation Lansing "H" DST No. 3
Remarks: Gas sample taken during final flow period.

INITIAL FLOW

Time O'Clock	Orifice Size	Gauge	CF/D
	in.	in.	
	in.	in.	
	in.	in.	
	in.	in.	
	in.	in.	
	in.	in.	
	in.	in.	
	in.	in.	
	in.	in.	
	in.	in.	

FINAL FLOW

Time O'Clock	Orifice Size	Gauge	CF/D
10	1/4 in.	4# in.	18,500
20	1/4 in.	5# in.	20,700
30	1/4 in.	5# in.	20,700
40	1/4 in.	4.5# in.	19,500
50	1/4 in.	2# in.	12,700
60	1/4 in.	1# in.	8,950
	in.	in.	
	in.	in.	
	in.	in.	
	in.	in.	

DIAMOND TESTING GENERAL REPORT

Jake Fahrenbruch, Tester

Cell: (620) 282-8977 / Office: (800) 542-7313

DIAMOND TESTING



TEST INFORMATION

Well Name	McMannis 'B' Unit #1-34
Company Name	Trans Pacific Oil Corp
Formation	DST #4, Lansing "I&J", 4097'-4144'
Test Type	Bottom-Hole w/safety joint
Surface Location	Sec 34-26s-15w-Pratt Co.-KS
KB Elevation (SL)	2066.000
Gauge Name	5951
Start Test Date	2017/06/07
Start Test Time	09:03:00
Final Test Date	2017/06/07
Final Test Time	17:35:00
Job Number	F481
Contact	Bryce Bidleman
Site Contact	Max Lovely

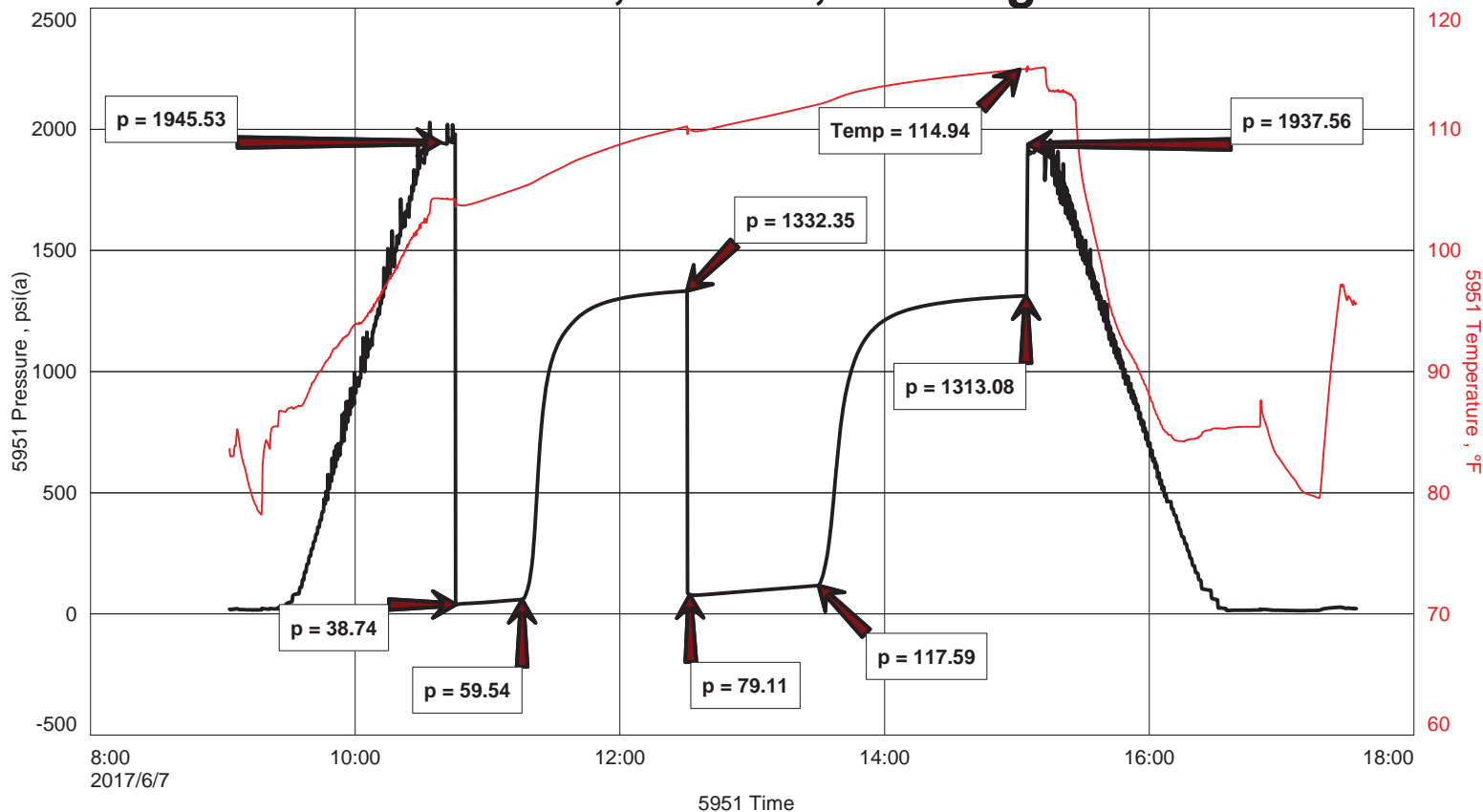
TEST RESULTS

Initial flow, blow increased to 5.75". No blowback.
 Final flow, blow increased to 11". Weak surface blowback.

TOTAL RECOVERED FLUID: 200'

- 80' SGCOCM 5% gas, 10% oil, 85% mud
- 60' SG&OCWM 5% gas, 5% oil, 40% wtr, 50% mud
- 60' MCW 84% wtr, 16% mud
- 120' Gas In Pipe
- Chlorides: 78,000 PPM ----- RW: .10 ohm @ 70 F ----- PH: 7.0 -----

McMannis 'B' Unit #1-34, DST #4, Lansing "I&J" 4097'-4144'





DIAMOND TESTING
 P.O. Box 157
 HOISINGTON, KANSAS 67544
 (800) 542-7313
DRILL-STEM TEST TICKET
 FILE: McMANNIS B10514

ON LOCATION:	<u>08:36</u>
START RECORDERS:	<u>09:03</u>
STOP RECORDERS:	<u>17:35</u>

Company TRANS PACIFIC OIL CORP Lease & Well No. McMANNIS 'B' UNIT #1-34
 Contractor STERLING DRILG REG #4 Charge to T.P.O.C.
 Elevation 2066' KB Formation LANSING "IJS" Effective Pay _____ Ft. Ticket No. F481
 Date 6-7-17 Sec. 34 Twp. 26 S Range 15 W County PRATT State KS
 Test Approved By MAX LOVELY Diamond Representative JAKE FAHRENBRUCH

Formation Test No. 4 Interval Tested from 4097 ft. to 4144 ft. Total Depth 4144 ft.
 Packer Depth 4092 ft. Size 6 3/4 in. Packer depth _____ ft. Size 6 3/4 in.
 Packer Depth 4097 ft. Size 6 3/4 in. Packer depth _____ ft. Size 6 3/4 in.

Depth of Selective Zone Set _____
 Top Recorder Depth (Inside) 4105 ft. Recorder Number 5951 Cap. 6000 P.S.I.
 Bottom Recorder Depth (Outside) 4106 ft. Recorder Number 5586 Cap. 6000 P.S.I.
 Below Straddle Recorder Depth _____ ft. Recorder Number _____ Cap. _____ P.S.I.

Mud Type CHEMICAL Viscosity 53 (4# LCM) Drill Collar Length 216 ft. I.D. 2 1/4 in.
 Weight 8.9 Water Loss 8.8 cc. Weight Pipe Length _____ ft. I.D. 2 7/8 in.
 Chlorides 4000 P.P.M. Drill Pipe Length 3858 ft. I.D. 3 1/2 in.
 Jars: Make STERLING Serial Number #5 S.J. Test Tool Length 23 ft. Tool Size 3 1/2-IF in.
 Did Well Flow? _____ Reversed Out _____ Anchor Length 47 ft. Size 4 1/2-FH in.
 Main Hole Size 7 7/8 Tool Joint Size 4 1/2 XH in. Surface Choke Size 1 in. Bottom Choke Size 5/8 in.

Blow: 1st Open: BLOW INC TO 5 3/4" NO BLOWBACK.
 2nd Open: BLOW INC TO 11" WEAK SURFACE BLOWBACK.

Recovered 80 ft. of SGCOXM 5% gas, 10% oil, 85% mud
 Recovered 60 ft. of SG4OCWM 5% gas, 5% oil, 40% wtr, 50% mud
 Recovered 60 ft. of MCW 84% wtr, 16% mud.

Recovered _____ ft. of Chlorides: 78,000 PPM
 Recovered _____ ft. of RW: .10 Ω @ 70 F
 Recovered _____ ft. of PH: 7.0

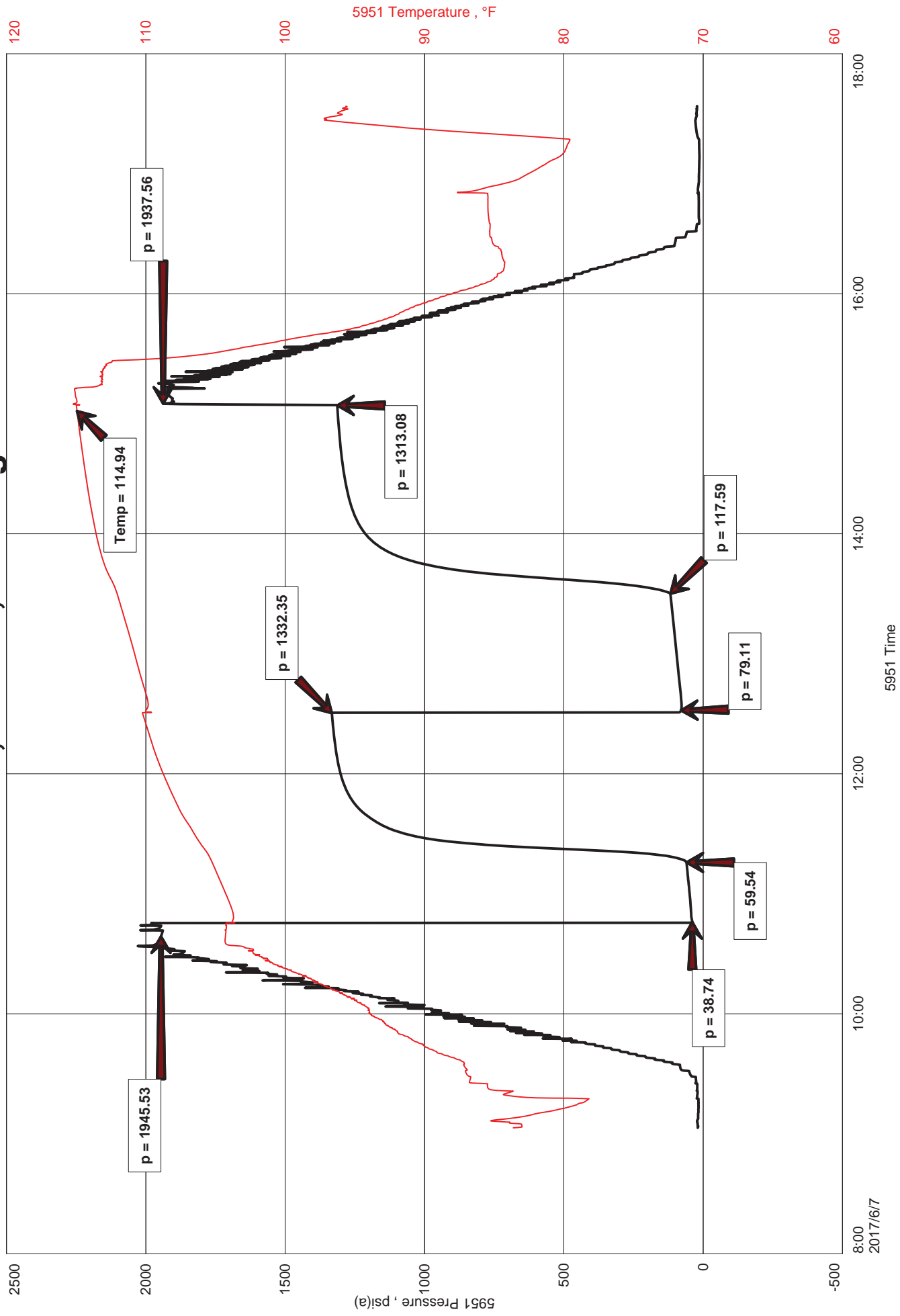
Remarks: TOTAL RECOVERED FLUID: 200'
120' GIP
 Price Job _____
 Other Charges Safety Joint
38 MRT (PRATT)
 Total _____

Time Set Packer(s) 10:46 A.M. P.M. Time Started Off Bottom 15:01 A.M. P.M. Maximum Temperature 115°F

Initial Hydrostatic Pressure..... (A) 1946 P.S.I.
 Initial Flow Period..... Minutes 30 (B) 39 P.S.I. to (C) 60 P.S.I.
 Initial Closed In Period..... Minutes 75 (D) 1332 P.S.I.
 Final Flow Period..... Minutes 60 (E) 79 P.S.I. to (F) 118 P.S.I.
 Final Closed In Period..... Minutes 90 (G) 1313 P.S.I. Thanks!
 Final Hydrostatic Pressure..... (H) 1938 P.S.I. Jacob [Signature]

Diamond Testing shall not be liable for damages of any kind to the property or personnel of the one for whom a test is made or for any loss suffered or sustained, directly or indirectly, through the use of its equipment, or its statement or opinion concerning the result of any test. Tools lost or damaged in the hole shall be paid for at cost by the party for whom the test is made.

McMannis 'B' Unit #1-34, DST #4, Lansing "I&J" 4097'-4144'





DIAMOND TESTING
 P.O. Box 157
 HOISINGTON, KANSAS 67544
 (800) 542-7313

TIME ON: 09:03
 TIME OFF: 17:35

DRILL-STEM TEST TICKET
 FILE: MCMANNISB1DST4

Company Trans Pacific Oil Corp. Lease & Well No. McMannis 'B' Unit #1-34
 Contractor Sterling Drlg. Rig #4 Charge to T.P.O.C.
 Elevation 2066' KB Formation Lansing "H" Effective Pay _____ Ft. Ticket No. F481
 Date 6/7/17 Sec. 34 Twp. 26 S Range 15 W County Pratt State KANSAS
 Test Approved By Max Lovely Diamond Representative Jake Fahrenbruch

Formation Test No. 4 Interval Tested from 4097 ft. to 4144 ft. Total Depth 4144 ft.
 Packer Depth 4092 ft. Size 6 3/4 in. Packer depth ----- ft. Size 6 3/4 in.
 Packer Depth 4097 ft. Size 6 3/4 in. Packer depth ----- ft. Size 6 3/4 in.
 Depth of Selective Zone Set -----

Top Recorder Depth (Inside) 4105 ft. Recorder Number 5951 Cap. 6000 P.S.I.
 Bottom Recorder Depth (Outside) 4106 ft. Recorder Number 5586 Cap. 6000 P.S.I.
 Below Straddle Recorder Depth ----- ft. Recorder Number ----- Cap. ----- P.S.I.

Mud Type CHEMICAL Viscosity 53 (4# LCM) Drill Collar Length 216 ft. I.D. 2 1/4 in.
 Weight 8.9 Water Loss 8.8 cc. Weight Pipe Length 0 ft. I.D. 2 7/8 in.
 Chlorides 4,000 P.P.M. Drill Pipe Length 3,858 ft. I.D. 3 1/2 in.
 Jars: Make STERLING Serial Number #5 Safety Joint Test Tool Length 23 ft. Tool Size 3 1/2-IF in.
 Did Well Flow? ----- Reversed Out ----- Anchor Length 47 ft. Size 4 1/2-FH in.
 Main Hole Size 7 7/8 Tool Joint Size 4 1/2 XH in. ^{13' perf in anchor} Surface Choke Size 1 in. Bottom Choke Size 5/8 in.

Blow: 1st Open: Blow increased to 5.75". No blowback.

2nd Open: Blow increased to 11". Weak surface blowback.

Recovered 80 ft. of SGCOCM 5% gas, 10% oil, 85% mud
 Recovered 60 ft. of SG&OCWM 5% gas, 5% oil, 40% wtr, 50% mud
 Recovered 60 ft. of MCW 84% wtr, 16% mud

Recovered _____ ft. of Chlorides: 78,000 PPM

Recovered _____ ft. of RW: .10 ohm @ 70 F

Recovered _____ ft. of PH: 7.0

Remarks: TOTAL RECOVERED FLUID: 200'

120' of Gas In Pipe

Time Set Packer(s) 10:46 A.M. P.M. Time Started Off Bottom 15:01 A.M. P.M. Maximum Temperature 115 F

Initial Hydrostatic Pressure..... (A) 1946 P.S.I.
 Initial Flow Period..... Minutes 30 (B) 39 P.S.I. to (C) 60 P.S.I.
 Initial Closed In Period..... Minutes 75 (D) 1332 P.S.I.
 Final Flow Period..... Minutes 60 (E) 79 P.S.I. to (F) 118 P.S.I.
 Final Closed In Period..... Minutes 90 (G) 1313 P.S.I.
 Final Hydrostatic Pressure..... (H) 1938 P.S.I.

Diamond Testing shall not be liable for damages of any kind to the property or personnel of the one for whom a test is made or for any loss suffered or sustained, directly or indirectly, through the use of its equipment, or its statement or opinion concerning the result of any test. Tools lost or damaged in the hole shall be paid for at cost by the party for whom the test is made.

DIAMOND TESTING GENERAL REPORT

Jake Fahrenbruch, Tester

Cell: (620) 282-8977 / Office: (800) 542-7313

DIAMOND TESTING



TEST INFORMATION

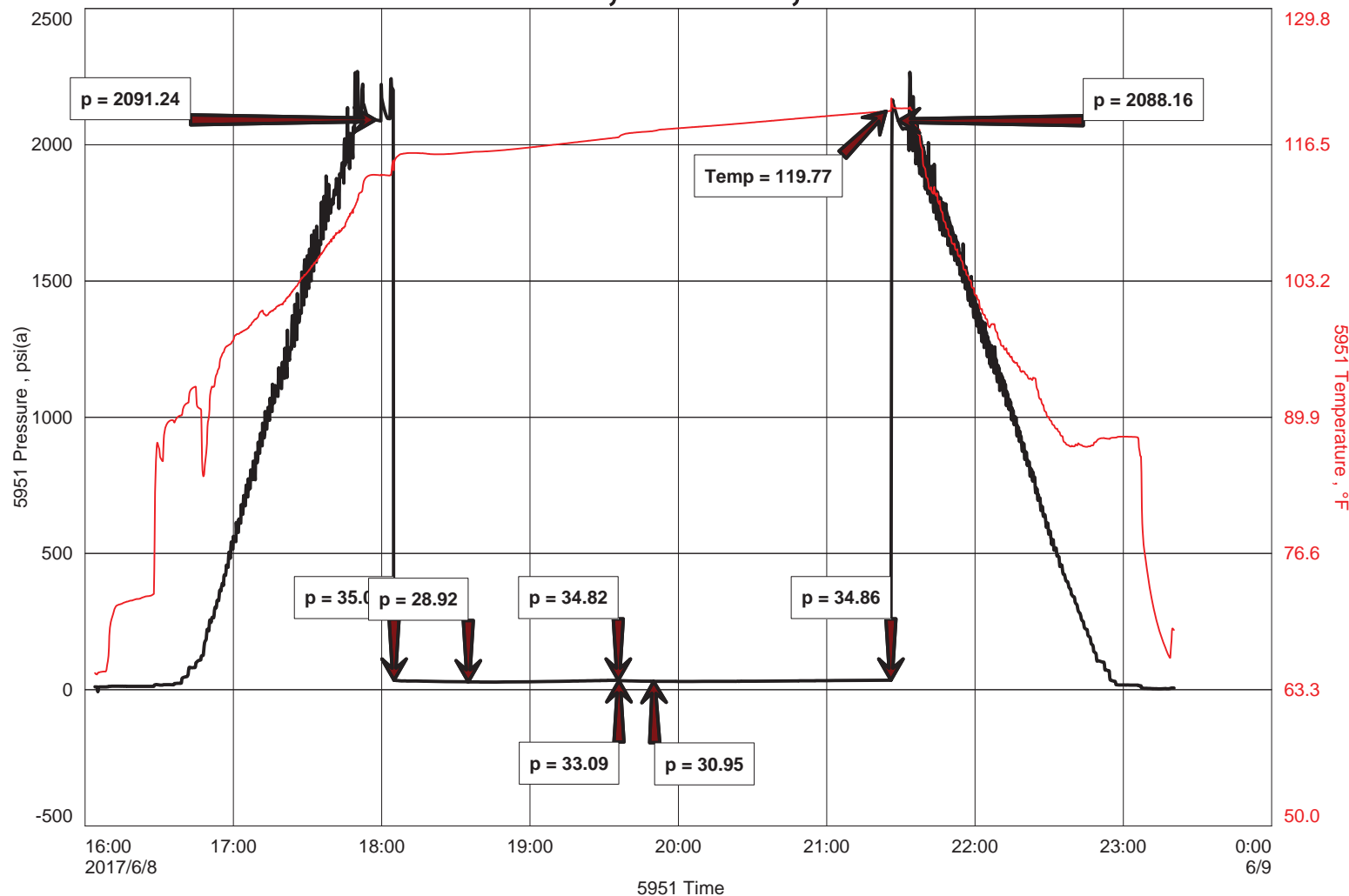
Well Name	McMannis 'B' Unit #1-34
Company Name	Trans Pacific Oil Corp
Formation	DST #5, Cherokee, 4366'-4385'
Test Type	Bottom-Hole w/safety joint
Surface Location	Sec 34-26s-15w-Pratt Co.-KS
KB Elevation (SL)	2066.000
Gauge Name	5951
Start Test Date	2017/06/08
Start Test Time	16:04:00
Final Test Date	2017/06/08
Final Test Time	23:21:00
Job Number	F482
Contact	Bryce Bidleman
Site Contact	Max Lovely

TEST RESULTS

Initial flow, weak blow, increased to .25" in 10 minutes, blow died.
Final flow, no blow.

Recovered 5' of drilling mud.

McMannis 'B' Unit #1-34, DST #5, Cherokee 4366'-4385'





DIAMOND TESTING
 P.O. Box 157
 HOISINGTON, KANSAS 67544
 (800) 542-7313
DRILL-STEM TEST TICKET
 FILE: MC Mannis B1D5T5

ON LOCATION:	<u>15:30</u>
START RECORDERS:	<u>16:04</u>
STOP RECORDERS:	<u>23:21</u>

Company TRANS PACIFIC OIL CORP Lease & Well No. MC Mannis 'B' UNIT #1-34
 Contractor STERLING DRUG REG #4 Charge to T.P.O.C.
 Elevation 2066' KB Formation CHEROKEE Effective Pay _____ Ft. Ticket No. F482
 Date 6/8/17 Sec. 34 Twp. 26S Range 15W County PRATT State KS
 Test Approved By MAX LOVELY Diamond Representative JAKE FAHRENBRUCH

Formation Test No. 5 Interval Tested from 4366 ft. to 4385 ft. Total Depth 4385 ft.
 Packer Depth 4361 ft. Size 6 3/4 in. Packer depth _____ ft. Size 6 3/4 in.
 Packer Depth 4366 ft. Size 6 3/4 in. Packer depth _____ ft. Size 6 3/4 in.

Depth of Selective Zone Set _____
 Top Recorder Depth (Inside) 4368 ft. Recorder Number 5951 Cap. 6000 P.S.I.
 Bottom Recorder Depth (Outside) 4369 ft. Recorder Number 5586 Cap. 6000 P.S.I.
 Below Straddle Recorder Depth _____ ft. Recorder Number _____ Cap. _____ P.S.I.

Mud Type CHEMICAL Viscosity 54 (4#LCM) Drill Collar Length 216 ft. I.D. 2 1/4 in.
 Weight 9.1 Water Loss 9.0 cc. Weight Pipe Length _____ ft. I.D. 2 7/8 in.
 Chlorides 5000 P.P.M. Drill Pipe Length 4127 ft. I.D. 3 1/2 in.
 Jars: Make STERLING Serial Number #555 Test Tool Length 23 ft. Tool Size 3 1/2-IF in.
 Did Well Flow? _____ Reversed Out _____ Anchor Length 19 ft. Size 4 1/2-FH in.
 Main Hole Size 7 7/8 Tool Joint Size 4 1/2 XH in. Surface Choke Size 1 in. Bottom Choke Size 5/8 in.

Blow: 1st Open: WEAK BLOW, INC TO 1/4" IN 10 MIN, BLOW DIED
 2nd Open: NO BLOW

Recovered 5 ft. of Drilg Mud 100% mud
 Recovered _____ ft. of _____
 Recovered _____ ft. of _____
 Recovered _____ ft. of _____

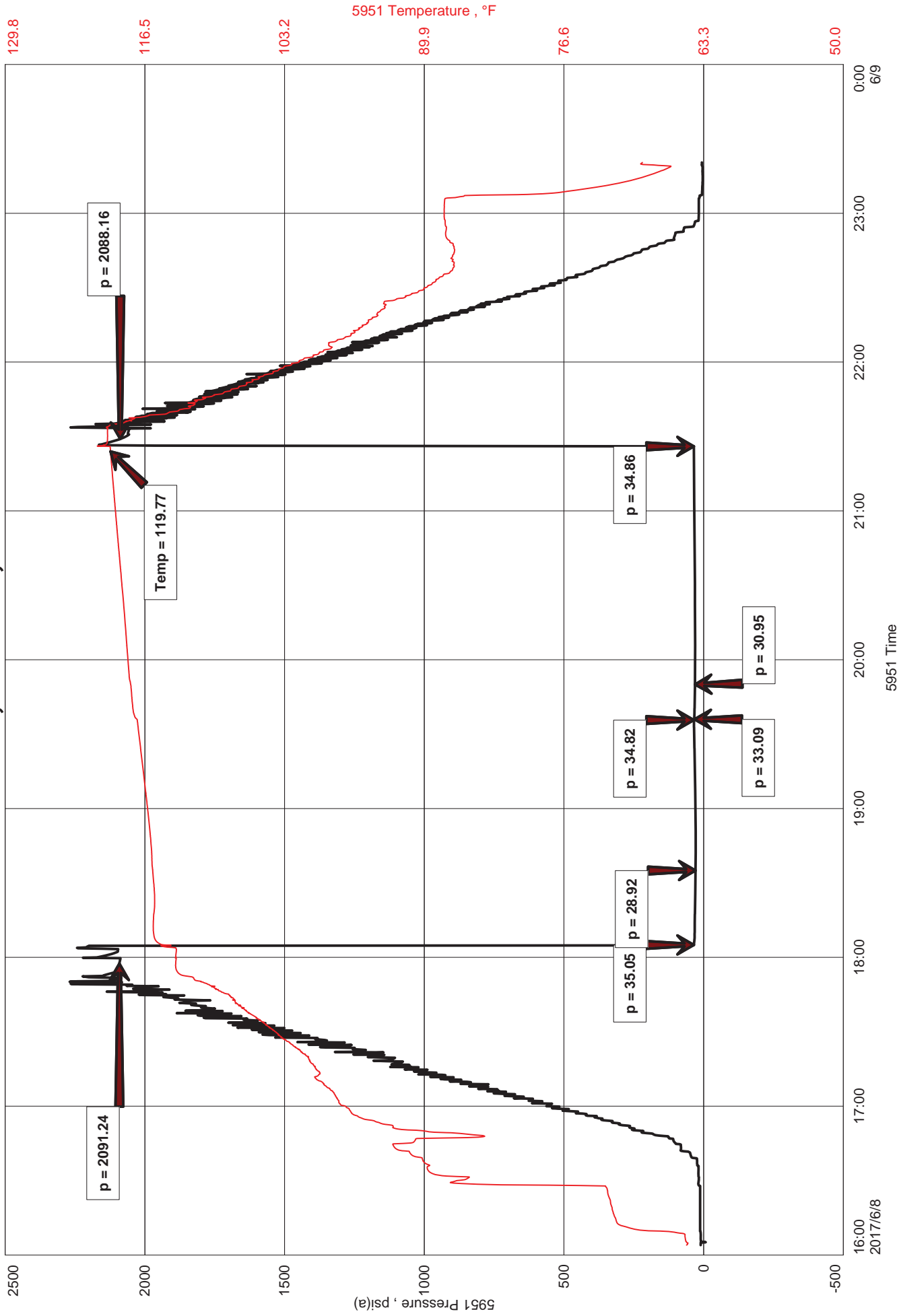
Recovered _____ ft. of _____	Price Job
Recovered _____ ft. of _____	Other Charges
Remarks: _____	<u>Safety Joint</u>
	<u>38 MRT (PRATT)</u>
	Total

Time Set Packer(s) 18:05 A.M. P.M. Time Started Off Bottom 21:20 A.M. P.M. Maximum Temperature 120°F

Initial Hydrostatic Pressure..... (A) 2091 P.S.I.
 Initial Flow Period..... Minutes 30 (B) 35 P.S.I. to (C) 29 P.S.I.
 Initial Closed In Period..... Minutes 60 (D) 35 P.S.I.
 Final Flow Period..... Minutes 15 (E) 33 P.S.I. to (F) 31 P.S.I.
 Final Closed In Period..... Minutes 90 (G) 35 P.S.I.
 Final Hydrostatic Pressure..... (H) 2088 P.S.I.

Diamond Testing shall not be liable for damages of any kind to the property or personnel of the one for whom a test is made or for any loss suffered or sustained, directly or indirectly, through the use of its equipment, or its statement or opinion concerning the result of any test. Tools lost or damaged in the hole shall be paid for at cost by the party for whom the test is made.

McMannis 'B' Unit #1-34, DST #5, Cherokee 4366'-4385'





DIAMOND TESTING
 P.O. Box 157
 HOISINGTON, KANSAS 67544
 (800) 542-7313

TIME ON: 16:04
 TIME OFF: 23:21

DRILL-STEM TEST TICKET
 FILE: MCMANNISB1DST5

Company Trans Pacific Oil Corp. Lease & Well No. McMannis 'B' Unit #1-34
 Contractor Sterling Drlg. Rig #4 Charge to T.P.O.C.
 Elevation 2066' KB Formation Cherokee Effective Pay _____ Ft. Ticket No. F482
 Date 6/8/17 Sec. 34 Twp. 26 S Range 15 W County Pratt State KANSAS
 Test Approved By Max Lovely Diamond Representative Jake Fahrenbruch

Formation Test No. 5 Interval Tested from 4366 ft. to 4385 ft. Total Depth 4385 ft.

Packer Depth 4361 ft. Size 6 3/4 in. Packer depth ----- ft. Size 6 3/4 in.

Packer Depth 4366 ft. Size 6 3/4 in. Packer depth ----- ft. Size 6 3/4 in.

Depth of Selective Zone Set -----

Top Recorder Depth (Inside) 4368 ft. Recorder Number 5951 Cap. 6000 P.S.I.

Bottom Recorder Depth (Outside) 4369 ft. Recorder Number 5586 Cap. 6000 P.S.I.

Below Straddle Recorder Depth ----- ft. Recorder Number ----- Cap. ----- P.S.I.

Mud Type CHEMICAL Viscosity 54 (4# LCM) Drill Collar Length 216 ft. I.D. 2 1/4 in.

Weight 9.1 Water Loss 9.0 cc. Weight Pipe Length 0 ft. I.D. 2 7/8 in.

Chlorides 5,000 P.P.M. Drill Pipe Length 4,127 ft. I.D. 3 1/2 in.

Jars: Make STERLING Serial Number #5 Safety Joint Test Tool Length 23 ft. Tool Size 3 1/2-IF in.

Did Well Flow? ----- Reversed Out ----- Anchor Length 19 ft. Size 4 1/2-FH in.

Main Hole Size 7 7/8 Tool Joint Size 4 1/2 XH in. Surface Choke Size 1 in. Bottom Choke Size 5/8 in.

Blow: 1st Open: Weak blow, increased to .25" in 10 minutes, blow died.

2nd Open: No blow.

Recovered 5 ft. of Drilling Mud 100% mud

Recovered _____ ft. of _____

Recovered _____ ft. of _____

Recovered _____ ft. of _____

Recovered _____ ft. of _____

Recovered _____ ft. of _____

Remarks: _____

Time Set Packer(s) 18:05 A.M. P.M. Time Started Off Bottom 21:20 A.M. P.M. Maximum Temperature 120 F

Initial Hydrostatic Pressure..... (A) 2091 P.S.I.

Initial Flow Period..... Minutes 30 (B) 35 P.S.I. to (C) 29 P.S.I.

Initial Closed In Period..... Minutes 60 (D) 35 P.S.I.

Final Flow Period..... Minutes 15 (E) 33 P.S.I. to (F) 31 P.S.I.

Final Closed In Period..... Minutes 90 (G) 35 P.S.I.

Final Hydrostatic Pressure..... (H) 2088 P.S.I.

Diamond Testing shall not be liable for damages of any kind to the property or personnel of the one for whom a test is made or for any loss suffered or sustained, directly or indirectly, through the use of its equipment, or its statement or opinion concerning the result of any test. Tools lost or damaged in the hole shall be paid for at cost by the party for whom the test is made.



McMannis B Unit 1-34

Daily Report

API: 15-151-22462

STR: 34-26S-15W

County: Pratt

KB: 2066

Location: 105 FSL 840 FWL

State: KS

Zone	Sample Top	Log Top	Structural Position	Comments
Chase Group	2187 (-121)	()	-6	
Topeka	3406 (-1340)	3406 (-1340)	-7	
Heebner	3758 (-1692)	3758 (-1692)	-2	
Lansing	3934 (-1868)	3936 (-1870)	-4	
Base Kansas City	4267 (-2201)	4264 (-2198)	-4	
Viola	4403 (-2337)	4400 (-2334)	+19	