

Fall & Associates

Stake and Elevation Service

P.O. Box 222

Pretty Prairie, KS. 67570

785-243-7506

Date 7-25-17

Invoice Number 0721171

MURFIN DRILLING

1-29

Uhlaender

Operator

Number

Farm Name

Rawlins-KS

29^s 2^s 35^w

2310'FNL 1650'FEL

County-State

S T R

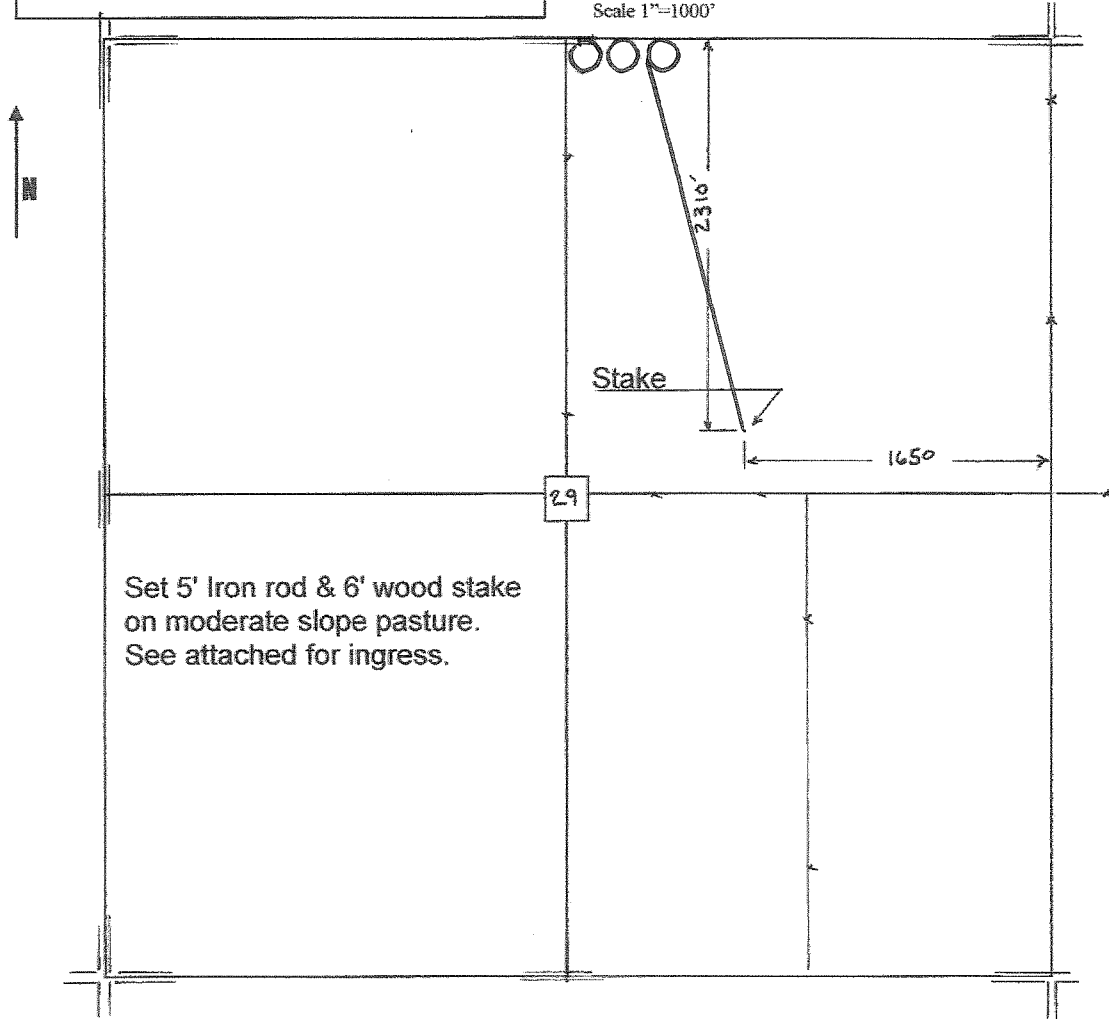
Location

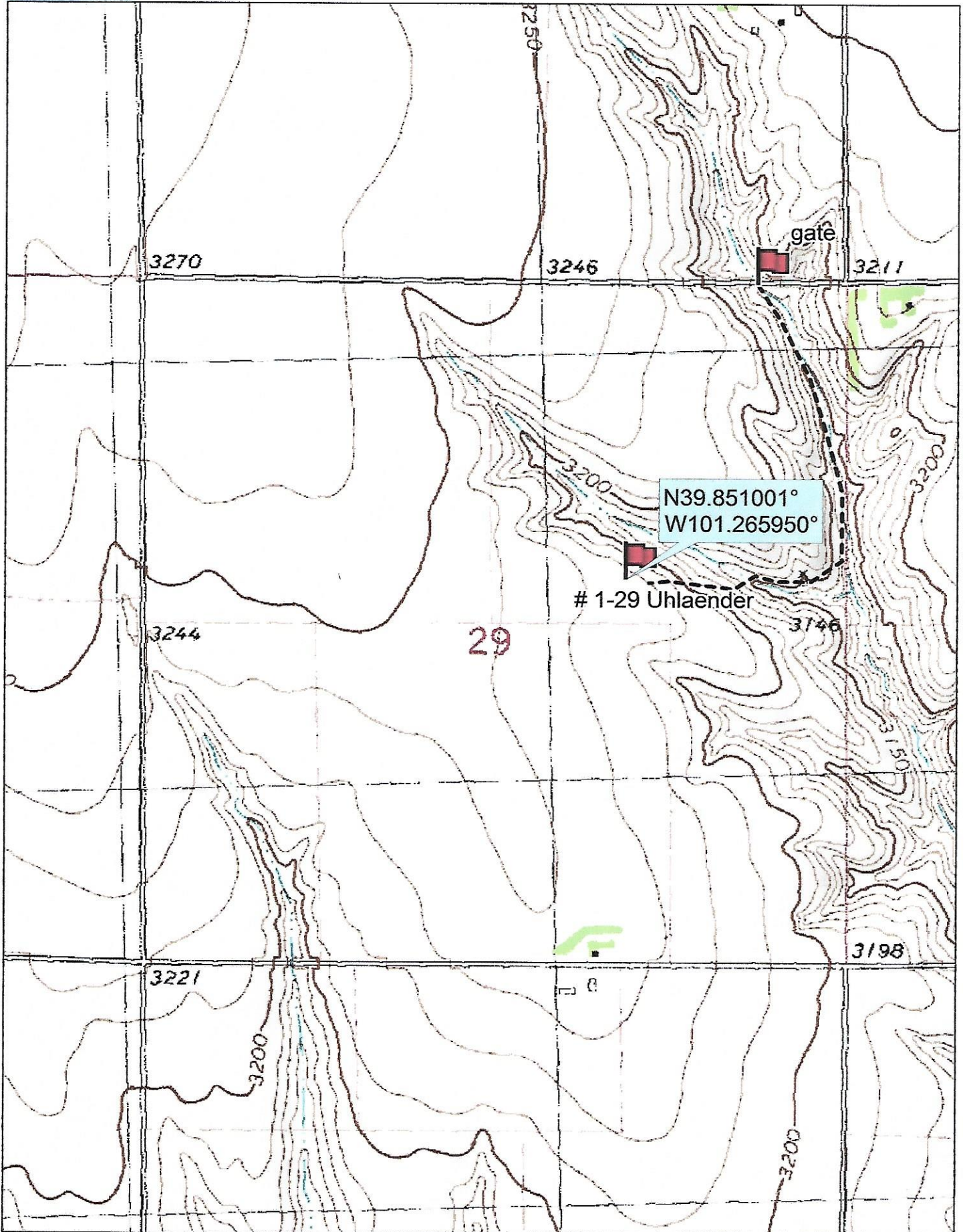
Murfin Drilling
250 N Water
Suite 300
Wichita, KS. 67202

Elevation 3221 Gr.

Ordered By: Shauna

Scale 1"=1000'





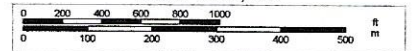
Data use subject to license.

© DeLorme. Topo North America™ 9.

www.delorme.com



Scale 1 : 12,000



1" = 1,000.0 ft

Data Zoom 13-1