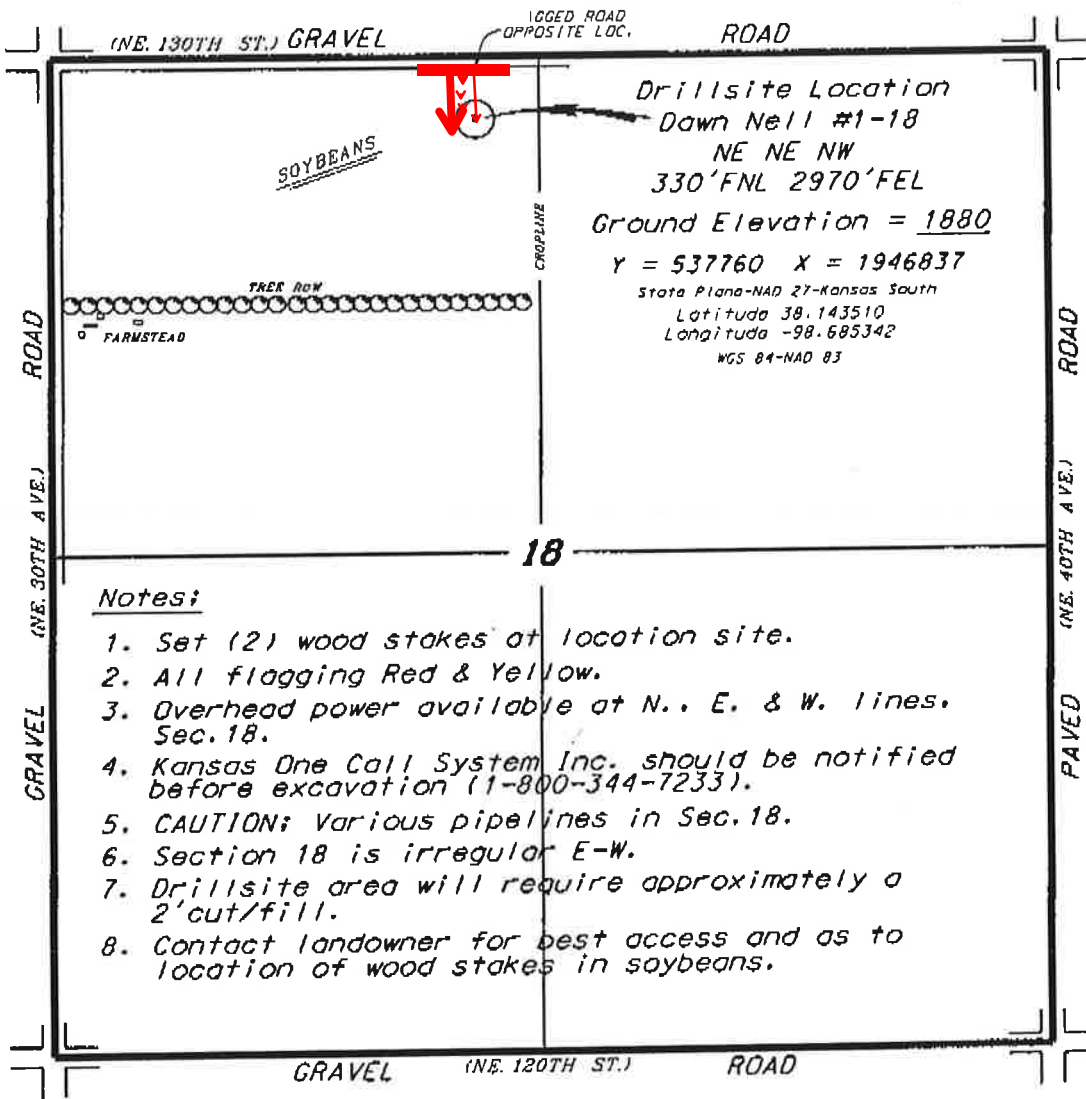


Start
8/8

L.D. DRILLING, INC.
DAWN NELL LEASE
NW. 1/4, SECTION 18, T22S, R12W
STAFFORD COUNTY, KANSAS

Directions:

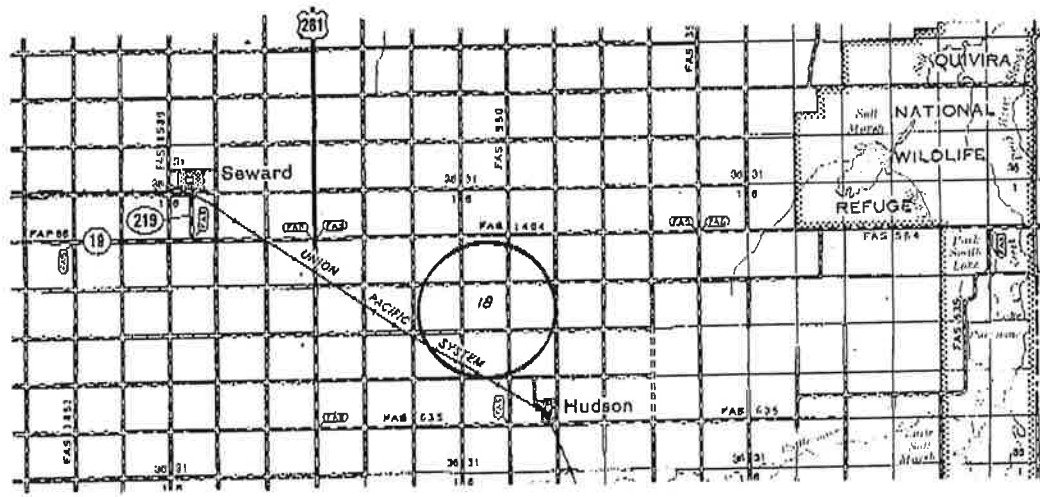
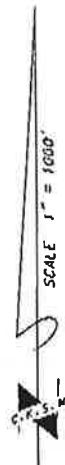
From the intersection of Highway 281 and Highway 19 11.0 miles south and 2.5 miles east of Seward, Kansas) go 1.0 miles South on Highway 281, then go 3.0 miles East to the NW corner of Section 18, then go 0.41 miles East to a flag on the south edge of road, then go 0.06 miles South to location.



Notes:

1. Set (2) wood stakes at location site.
2. All flagging Red & Yellow.
3. Overhead power available at N., E. & W. lines, Sec. 18.
4. Kansas One Call System Inc. should be notified before excavation (1-800-344-7233).
5. CAUTION: Various pipelines in Sec. 18.
6. Section 18 is irregular E-W.
7. Drillsite area will require approximately a 2' cut/fill.
8. Contact landowner for best access and as to location of wood stakes in soybeans.

*Ingress and egress to location as shown on this plot is for usage only and may not be legally opened for public use. Contact landowner, Tenant and county road department for access.

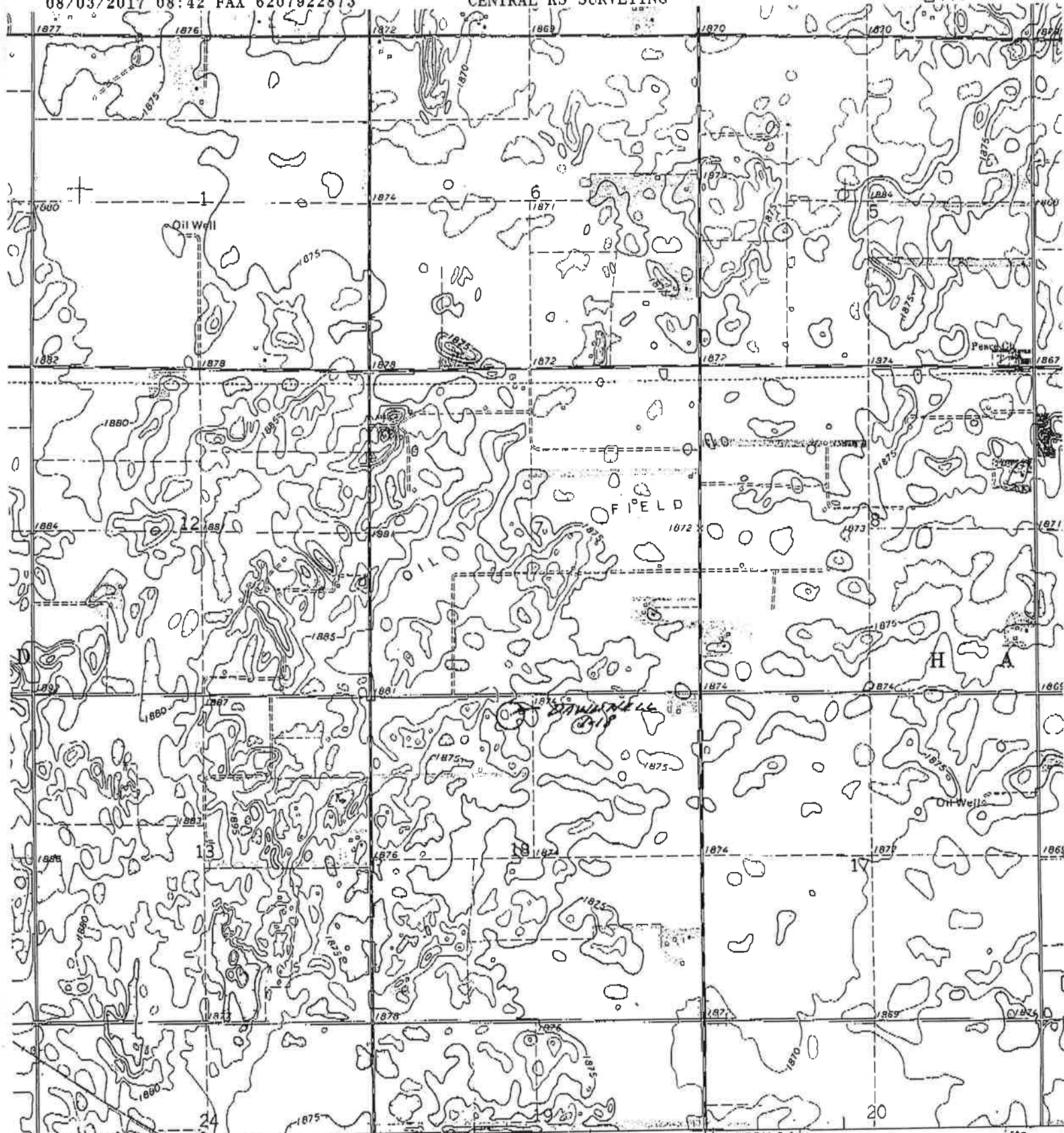


* Controlling data is based upon the best maps and photographs available to us and upon a regular section of land containing 640 acres.

* Approximate section lines were determined using the normal standard of care of oilfield surveyors practicing in the state of Kansas. The section corners, which establish the precise section lines, were not necessarily located, and the exact location of the drillsite location in the section is not guaranteed. Therefore, the operator, securing this service and accepting this plot and all other parties relying thereon agree to hold Central Kansas Oilfield Services, Inc., its officers and employees harmless from all losses, costs and expenses and said entities released from any liability from incidental or consequential damages.

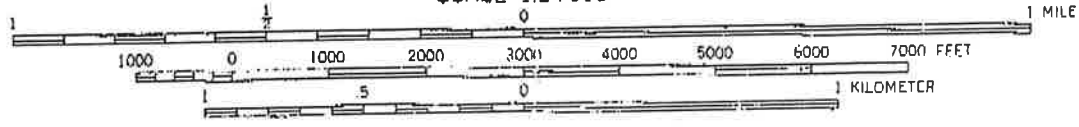
* Elevations derived from National Geodetic Vertical Datum.

Date August 2, 2017



FEET 42130" 26 R. 13 W. 527 (HUDSON) R. 12 W. 528 HUDSON 26 W. 40' 530

SCALE 1:24,000



CONTOUR INTERVAL 5 FEET
DATUM IS MEAN SEA LEVEL

