



Service Order #: 75197C

Date: 01-Jul-17

Well Name	Location	County	St	API#		
DAWSON TRUST 1-1		WALLACE	KS	15-199-20441		
Formation	Cement Via	Type Of Service	Well Type	Age	AFE#	PO#
	CASING	SURFACE	OIL	NEW		

Customer: STALBAR OIL CORPORATOIN

Remarks: * Pumped: 37.7 bbls / 175 sks

Customer Rep: ALAN LOSTIS PH:

Type	Size	Weight	Depth	Volume
Surface Casing:	8.625	24.0	312.0	
Production Casing:				
Intermediate:				
Drill Pipe:				
Tubing:				

BHT	Max PSI	Total Depth
	1,500	314.0

Packer or Retainer Type / Depth:

Type	Size	Depth (Top)	Depth (Bot)	Volume
Liner:				
Open Hole:	12.250	0.0	314.0	

Perf Depths:	#	Total
	0	0
	0	
	0	

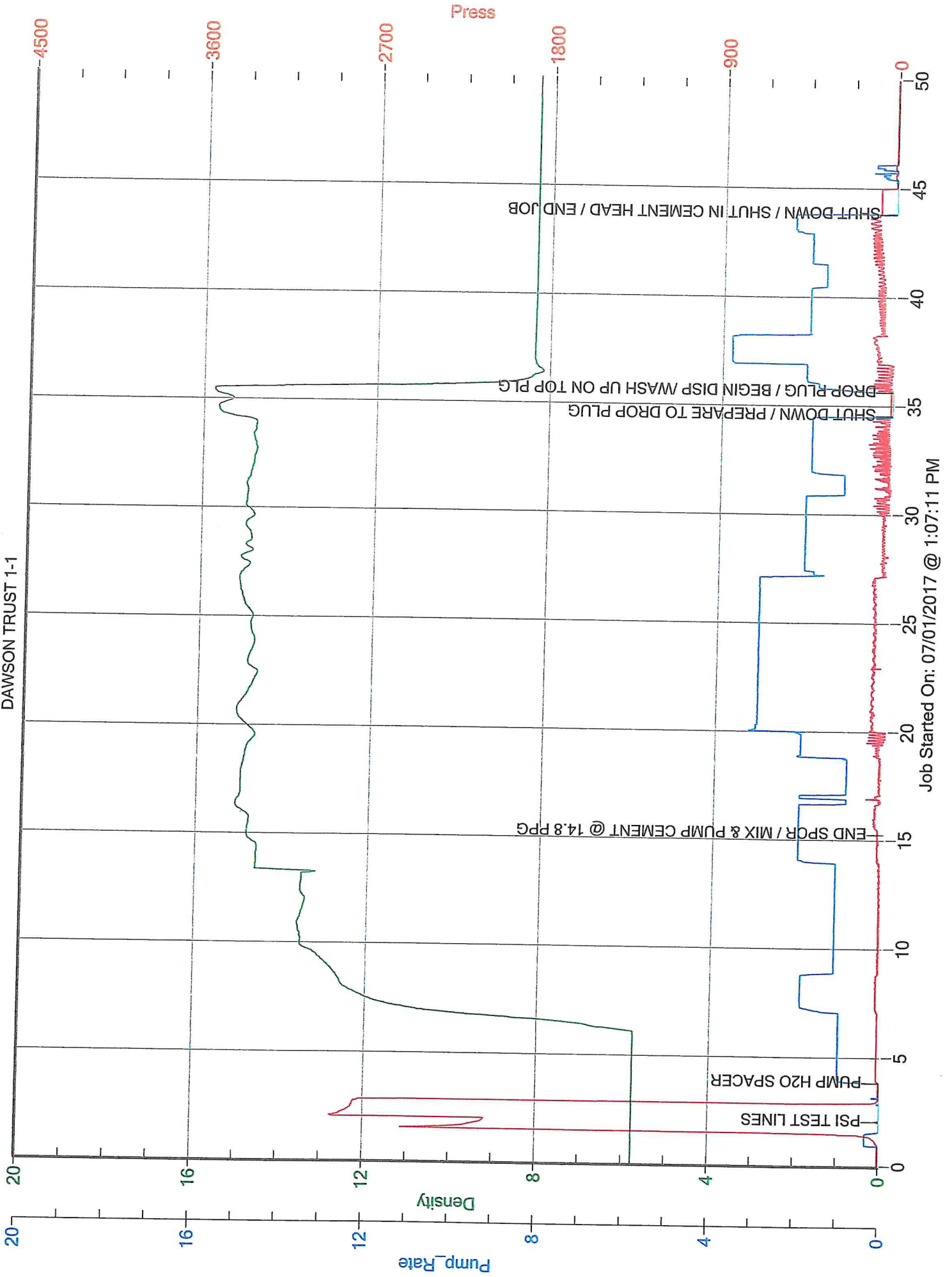
TIME	PUMP RATES		DENSITY (lb/gl)	PRESS (psi)	STG TOT (bbls)	TOTAL (bbls)	REMARKS
	WATER (gpm)	PUMP (bpm)					
13:09	0	0.1	5.78	2,860		0.2	PSI TEST LINES
13:11	0	0.0	5.78	6		0.0	PUMP H2O SPACER
13:22	0	2.0	14.81	40		15.0	END SPCR / MIX & PUMP CEMENT @ 14.8 PPG
13:42	0	0.0	15.65	19		43.1	SHUT DOWN / PREPARE TO DROP PLUG
13:43	0	0.0	14.15	12		0.0	DROP PLUG / BEGIN DISP / WASH UP ON TOP PLG
13:51	0	2.3	8.34	89		18.5	SHUT DOWN / SHUT IN CEMENT HEAD / END JOB

Summary

Max Fl. Rate Avg Fl. Rate Max Psi Avg Psi
 2.3 1.1 2,872 51

Customer Acknowledgement:	Service Rating:	Cementer:	PRODUCTS USED
	<input type="checkbox"/> Satisfactory <input type="checkbox"/> Unsatisfactory	CORY THAUT	

STELBAR OIL CORPORATION
DAWSON TRUST 1-1



Job Started On: 07/01/2017 @ 1:07:11 PM