

# GEOLOGIST'S REPORT

## DRILLING TIME AND SAMPLE LOG

COMPANY TRANS PACIFIC OIL CORP.  
 LEASE McMannis B' Unit #1-34  
 FIELD \_\_\_\_\_  
 LOCATION 105' FSL, 840' FWL  
 SEC 34 TWSP 26s RGE 15w  
 COUNTY Pratt STATE Kansas

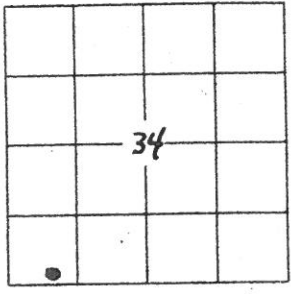
ELEVATIONS  
 KB 2066  
 DF \_\_\_\_\_  
 GL 2055  
 Measurements Are All  
 From K.B.

CONTRACTOR Sterling Drilling Company Rig 2  
 SPUD 5/30/2017 COMP 6/11/2017  
 RTD 4530' LTD 4531'  
 MUD UP 3200' TYPE MUD Fresh

CASING  
 SURFACE 8 5/8" @ 280'  
 PRODUCTION 4 1/2" @ 4512'  
 ELECTRICAL SURVEYS  
 GDL / <sup>ELI</sup> CNL / DIL / micro / SONIC

SAMPLES SAVED FROM 3400 TO TD  
 DRILLING TIME KEPT FROM 3200 TO TD  
 SAMPLES EXAMINED FROM 3400 TO TD  
 GEOLOGICAL SUPERVISION FROM 3340 TO TD  
 GEOLOGIST ON WELL W. Bryce Bidleman / Max Lovely (4095' to T.D.)

FORMATION TOPS	LOG	SAMPLES
Chase	2192 (-126)	2187 (-121)
Heabner	3758 (-1692)	3758 (-1692)
Brown Lime	3911 (-1845)	3910 (-1844)
Lansing	3936 (-1870)	3934 (-1868)
Stark	4158 (-2092)	4162 (-2096)
Base KC	4264 (-2198)	4267 (-2201)
Cherokee Sand	4364 (-2298)	4366 (-2300)
Kinderhook Sand	4392 (-2326)	4395 (-2329)
Viola	4400 (-2334)	4403 (-2337)
RTD		4530 (-2464)
LTD	4531 (-2465)	



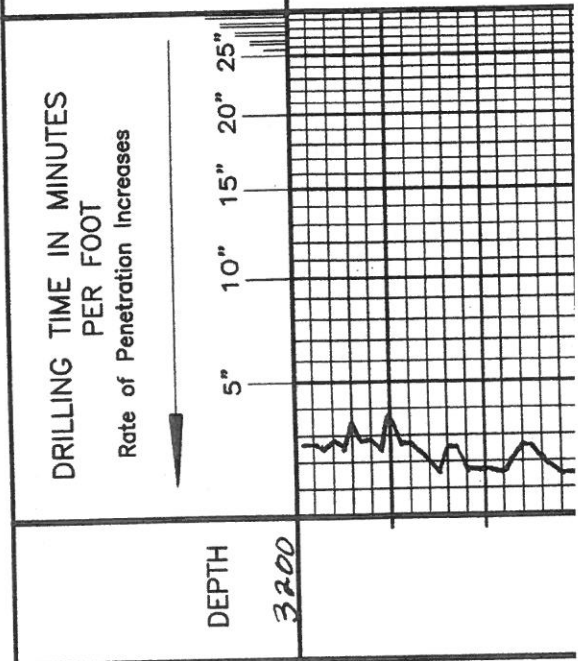
REMARKS *Due to favorable structural position, as indicated by 3D seismic, and encouraging DST results in the Lansing, it was decided to set 4 1/2" production casing to further test the Lansing. The Kinderhook sand was also fairly well developed with oil and gas shows in samples. This zone will be tested through casing at well.*

*Respectfully,  
W. Bryce Bidleman*

### LEGEND

- Anhydrite
- Salt
- Sandstone
- Shale
- Carb sh
- Limestone
- Ool. Lime
- Chert
- Dolomite

SCALE  
 " = 100'



LITHOLOGY	SAMPLE DESCRIPTIONS
[Lithology patterns]	[Sample descriptions]

REMARKS

*Note: Gas kick @ Langdon Sen*





3500

50

3600

50

3700

50

HEBNER 3754 (1692)  
E109 SAME

LM - CRM → TW, F → BM, FOSS, FEW  
ORBIT IN PT, FR VIBRY.  
SOME PT. NOT-NUD, CHRY IN  
PT. CNT- AA. N.S.  
LM - CRM → TW, Fx, FOSS, PR  
VIBRY & NOT-NUD, DSE IN PT  
CNT- TW → TW.  
LM - TW, Fx, FOSS, MOST DSE.  
CNT- WH → TW.

LM - TW → TW, Fx, FOSS,  
PR VIBRY & REST DSE.  
CNT- AA.  
SH- CY.

LM - CRM, Fx, FOSS, FR  
VIBRY & NOT-NUD, FEW FOSS  
ALSO, SOME CHRY. CNT- TW.  
LM - CRM → TW, Fx, FOSS, SCAL  
PR VIBRY & ABOVE CHK.  
CNT- WH → CRM. N.S.

LM - TW, F → BM, FOSS, FEW  
ORBITES, SCAL PR VIBRY,  
REST DSE. CNT- TW.

LM - AA, FR AMT SOFT GRK.  
CNT- AA.

LM - AA, CNT- AA  
SH- CY → BLK.

LM - CRM → TW, Fx, FOSS,  
MOSTLY DSE, CHRY IN PT.

LM - WH → CRM → TW, F → BM,  
ORBIT IN PT, SCAL FR VIBRY  
& NOT-NUD, 1 PC W/ TR  
VY LITE FO, AMOR OR STN,  
NO FID  
LM - TW, Fx, FOSS, SCAL PR &  
REST DSE. N.S.

LM - TW, Fx, FOSS IN PT, ORBIT  
IN PT, SCAL FR VIBRY,  
COMB. N.S.

LM - AA, ABOVE SOFT WH GRK

LM - AA.

LM - TW, Fx, FOSS, FEW  
VIBRY & FOSMIDE, VY CHRY,  
SPR WASH WH.

LM - CRM → TW, Fx, FOSS, SCAL  
VIBRY & NOT-NUD & SOME 2ND  
CAL, W ABOVE SOFT WH CHK.

LM - CRM, F → BM, FOSS, FEW  
ORBITES, FR VIBRY & NOT-NUD,  
ABOVE CHK.

LM - CRM, F → BM, FR AMT 2ND  
CAL W/ FR VIBRY & NOT-NUD,  
CHRY LM.

LM - TW, F → BM, SOFT IN PT,  
PR → TW, NOT-NUD. N.S.

LM - CRM → TW, Fx → BM, SUEID  
IN PT, SCAL PR NOT-NUD &  
DSE IN PT. N.S.

LM - TW, F → BM, SCAL PR VIBRY  
& NOT-NUD, MOST DSE. N.S.

LM - TW → ABOVE, Fx, SOCR  
SCAL PR VIBRY & NOT-NUD,  
REST DSE.

LM - AA.

LM - TW, F → BM, MOST DSE,  
SOME PR NOT-NUD.

SH - BLK CARB  
80 U6K

LM - CY → TW, FOSS, DSE.

80 U6K





Res: 500' GIP  
 240' WM  
 945' W  
 1185' Total Flow  
 FP: 66-290 / 301-5  
 SIP: 1291 / 1293M  
 HP: 1915 / 1917M

DST3 4068-4095  
 30.75.60.90  
 IF: BOB 28 sec, GTS 2.2M  
 ISI: BOB 12 min  
 FF: BOB 1min, Gg 2.0.7ml  
 FSI: BOB 5min  
 Rec: 955' C60 - 75% O, 2.5.  
 180' H6C WMC0.35%  
 60' H6C WMCW 12%  
 30% G, 10% O  
 CHLOR: 150,000 GRA  
 FP: 67-143, 158-284  
 SIP: 1228-1206  
 HP: 1984-1971

50 U6K

- GEO ON LOCK @ 4095'  
 (Max Lovely)

267U Kick (BACKGROW)  
 920-C1

7:AM 6-7-17  
 PREP FOR DST#4e

MUD CHECK

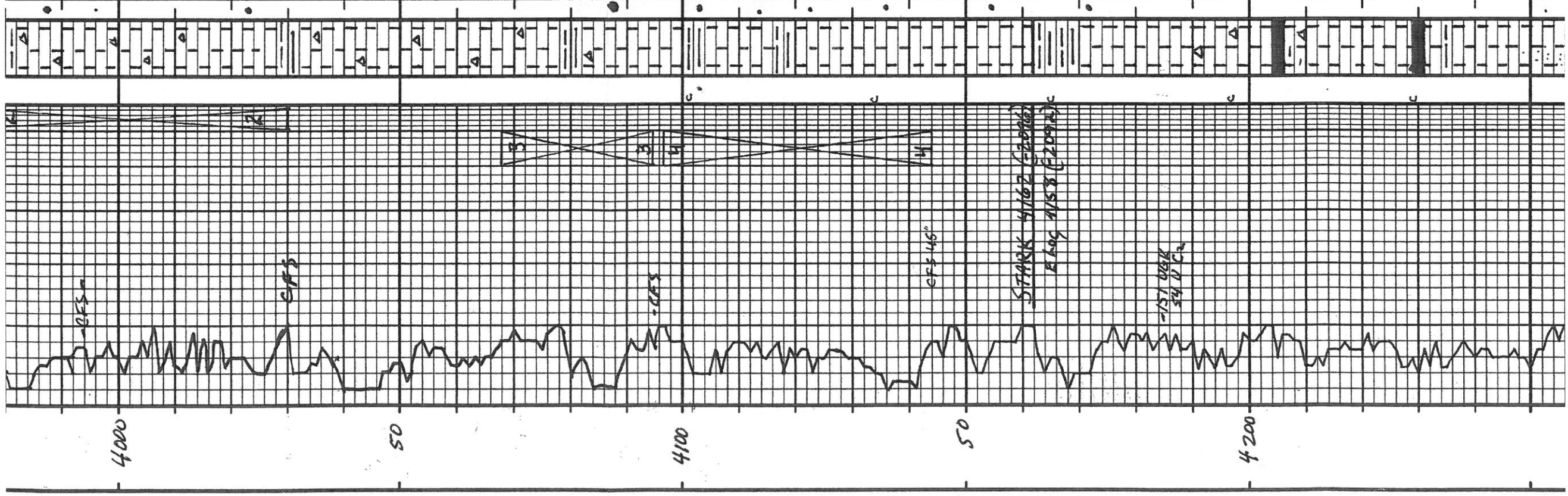
VIS: 53 WT: 89  
 CHLOR: 4000 LCM: 4  
 FILT: 8.8

DST#4 4097-4114

30.75.60.90  
 IF: build to 574', NO BB  
 FF: build to 11'  
 FSI: surf blo @ 45min  
 Rec: 120' GIP  
 80' S6C0C W - 5% G, 10%  
 60' S6C0C W - 5% G, 5%  
 60' MCW - 84% W  
 CHLOR: 78000  
 FP: 39-60, 79-118  
 SIP: 1332-1313  
 HP: 1946-1938

1670 Kick (BACKGROW)  
 61-C2

LM-CRM, Fx, FEW FOS, CHRY  
 SCAT PR VEG, N.S.  
 TA-WCHT  
 LM-CRM, Fx, PR VEG, S3 BLK  
 RESID, ALKSTN, N.S.  
 LM-TN, Fx, DSE, N.S.  
 LA-TN, Fx, DSE, N.S.  
 SCAT PR VEG, MOIST DSE.  
 FEW PG W/ BLK HEAD P. RES.  
 FROM ABOVE. CHRY, W/ K. G.  
 005.11IMP. ST-GYR GY.  
 LM-TN, Fx, DSE, N.S.  
 CHY-TN, Fx, DSE, N.S.  
 LM-TN, Fx, DSE, N.S.  
 SMALL AMT CHRY. CHY-TA  
 SM-DK BRN, Fx, DSE, N.S.  
 LM-TN, Fx, DSE, N.S.  
 SCAT PR VEG, MOIST DSE.  
 DE BRN FOS, REED ST, WK  
 ODOR, No FLU, No K.  
 LM-TN, Fx, FOS, SOME 2nd  
 CAL, SCAT PR VEG, N.S.  
 CHY-TN, Fx, FOS, N.S.  
 LM-TN, Fx, FOS, MOSTLY DSE  
 FEW SCAT VEG, FA AMT CHA  
 CHY-TN, Fx, N.S.  
 LM-TN, Fx, FOS, Fx, FOS  
 MOST DSE, FA AMT CHA.  
 CHY-TN, Fx, N.S.  
 LM-TN, Fx, CHY-TA.  
 SH-GYR BLK, SOME PTR.  
 LM-TN, Fx, DSE, Fx, DSE  
 LM-TN, Fx, DSE, Fx, DSE  
 FOS, Fx, DSE, Fx, DSE  
 DVE FLU.  
 LM-TN, Fx, FOS, DSE.  
 SH-CRY, DK GRY  
 LS, TAN, CRM, FRAGS W/ BLK TARRY  
 OIL, SET OOL, VGL, LT ODOR  
 " TAN, FXTLN, M, HRD, ABUN V  
 SML FOS & FRAGS, PXTLN FOS  
 LS, WHT, CHLKY, S, SL HRD, F, O  
 SET BRN OIL STNG, FEW O SPTS ON  
 BR, LT ODOR, WET  
 LS, TAN, GRV, FXTLN, SL GRULEXT,  
 HRD, G, PP INT XTLN, FSG, GASSY,  
 G FLAVOR STNG, F, S, F GASSY  
 BLEED, LT ODOR  
 LS, WHT, F, XTLN, SOFT, CHLKY N, PRT  
 SET PLS G FLAVOR STNG, F, S, ON BRK  
 SML FLAVOR OIL SPTS, LT ODOR,  
 Y ENERGY  
 LS, TAN, V, FXTLN, DNS, HRD, NO  
 APP, N.S.  
 LS, WHT, FXTLN, S, M HRD, SET PLS  
 O, SET FILMY EDGE STNG, LT ODOR  
 (T, PLS), FLAVOR SHO, FEW FOS SPTS ON  
 BRK, NO VLS ENERGY  
 SH, GRV  
 LS, WHT, F, M XTLN, SOFT, SL BRIL.  
 G, WHT XTLN, G, SFO, BRRE, LT OIL,  
 G FLAVOR, F, SHO, GAS, ABUN S, HO RKS  
 LT ENERGY, G, ODOR, LT OIL, RAINBOW  
 LS, A.A. INCR SHO, GAS, RES BLEEDING,  
 G, ODOR, G, XTLN, B  
 LS, CRM, F, XTLN, M, HRD, FOS, SET  
 LS FRAGS, F, O, N.S.  
 LS, TAN, V, FXTLN, DNS, HRD, TITE  
 N.S.  
 LS, TAN, BRN, FXTLN, HRD, SET  
 LS FRAGS, AND APP, SET BLK  
 CHY - SET FOS FRAGS W/ N.S.  
 SH, BLK, CAB  
 CHY, GRV, WHT, SL TRIP, FRESH  
 N.S.  
 LS, TAN, V, FXTLN, DNS, S, M HRD,  
 BRIL, AND VLS, N.S.  
 H.A.  
 H.A.  
 LS, CRM, V, FXTLN, DNS, RES HRD,  
 MOSTLY SOFT & BRIL, SET CHLKY  
 LS, NO APP, N.S.  
 H.A.  
 SS, V, F, G, R, N.S., W, S, O, R, T, W, R, O, D, SOFT  
 LT GRV, CMIT, SL FRIABLE N, RES, G, O  
 N.S.  
 LS, TAN, V, FXTLN, U, HRD, DNS, FEW  
 N.S.





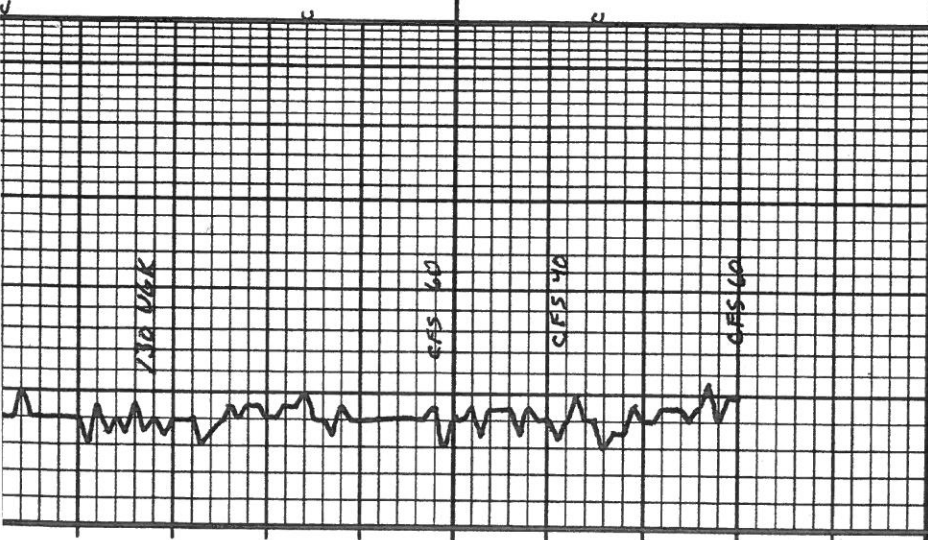


130' C.A. 13 UGK

NO KICK (1030 BACKGROUND)  
19-CR

CONDITION HOLE 1 3/4 HRS

DEPTH	DRILLING TIME Minutes/Foot	LITHOLOGY	SAMPLE DESCRIPTIONS	REMARKS
			LS. GRAY, F. XTLM, V. HRD, DMS. SET 16 FOS, TITE, MS	
			CHLC, LG. CLR XTLS, BRITL, V.G. INT XTLN, P. C. STMG, ESPO, BLK-SHIMED BRN OIL, PLATY, W. RAD. DROPLETS, SL LIMY, NO ODR, NO FLUR, 1 PE	
			DOLD, WHF, F. GRNLR, TXT, SOFT F. INT, M. MS, NO ODR, CHT, GRV WHF, SHARP, MS	
			DOLD, SD, GRV, GRN, F. GRMS, HRD W. CNT'D, V.P. MS	
			DOLD, SD, WHF, F. GRMS, SOFT, RES FRIBLE, V.G. P. MS, NO KICK, 1 PE. DB TARRY STMG	
			CHT, WHF, DS BRN STRKS, SHARP FRESH, MS	
			LS. BUFF, F. M. XTLM, FEW LG XTLS W/ N. S. M. HRD, BRITL, F. G. P. STERS, MS, NO KICK	
			CHT, WHF, GRV, SHARP, FRESH MS	
			CHT, WHF, GRV, BRN, SHARP, FRESH, MS	



COMPANY Trans Pacific Oil Corporation  
 LEASE Mc Mannis B Unit 1-34  
 LOCATION 105' E 34, 840' FWL SEC 34 TWP 26S RNG 15W  
 COUNTY Pratt STATE Kansas

ELEVATION: K.B. 2066