

**Geo Log Header**  
**WellSight Systems**

Scale 1:240 (5"=100') Imperial  
Measured Depth Log

Well Name: Schwartz "A" #2  
API: 15-193-20993-00-00  
Location: Sec: 1-T9S- R31W  
License Number: 33268  
Spud Date: 04-18-17  
Surface Coordinates: 535' FSL & 882' FWL  
NW-SE-SW-SW

Region: Thomas Co., KS.  
Drilling Completed: 04-29-17

Bottom Hole  
Coordinates:  
Ground Elevation (ft): 2944'                      K.B. Elevation (ft): 2951'  
Logged Interval (ft): 3500'                      To: 4618'                      Total Depth (ft): 4620' RTD  
Formation: Mississippi  
Type of Drilling Fluid: Chemical/Polymer/Gel

Printed by STRIP.LOG from WellSight Systems 1-800-447-1534 [www.WellSight.com](http://www.WellSight.com)

**OPERATOR**

Company: RL Investment, LLC  
Address: 217 Saint Peter  
Morland, KS 67650-5101

**GEOLOGIST**

Name: Patrick J. Deenihan  
Company:  
Address: P.O. Box 781929  
Wichita, KS 67278

## REMARKS

The well cuttings were saved, submitted and will be available for review at the Kansas Well Sample Library located in Wichita, KS.

## DSTs

DST # 1 ( 3943' - 3980' )      30"-45"-45"-60"  
 1st Open: Built to 2 3/4" in 30"      Weak Blow Back  
 2nd Open: Built to 3 1/4" in 45"      No Blow Back

REC: 129' Mud. (100% Mud)

IFP: 9#/ 42#                      FFP: 45#/ 73#                      BHT: 122 deg  
 ISIP: 1235#                      FSIP: 1227#  
 IHP: 1893#                      IHP: 1890#

DST # 2 ( 4010' - 4034' )      30"-45"-45"-60"  
 1st Open : Built to 1" in 30"      No B.B.  
 2nd Open : Built to 1/2" in 45"      No B.B.

REC : 58' of SLOM (1% Oil; 99% Mud)

IFP : 9#/ 23#                      FFP : 25#/ 38#                      BHT: 121 deg  
 ISIP: 920#                      FSIP: 905#  
 IHP : 1952#                      FHP : 1892#

DST #3 ( 4110' - 4142' )      30"-45"-45"-60"  
 1st Open : 3/4" in 30"              No Blow Back  
 2nd Open : 1/2" died in 28"      No Blow Back

REC : 8' Mud (100% Mud)

IFP: 9#/ 20#                      FFP: 16#/ 23#                      BHT: 122 deg  
 ISIP: 1195#                      FSIP: 1170#  
 IHP: 2047#                      FHP: 1947#

DST # 4 ( 4141' - 4196' )      30"-45"-30"-45"  
 1st Open : 1" in 30"              No Blow Back  
 2nd Open : No Blow              No Blow Back

REC: 3' Mud (100% Mud)

IFP: 9#/ 11#                      FFP: 12#/ 20#                      BHT: 119#  
 ISIP: 549#                      FSIP: 432#  
 IHP: 2038#                      FHP: 2008#

DST # 5 ( 4370" - 4439' ) Packer Failure      30"-45"-45"-60"  
 REC: 253' Mud.

DST # 6 ( 4390' - 4439' )      30"-45"-45"-60"  
 IFP: 1" in 30"                      1" Blow Back ( Tool Leak ??)  
 FFP: No Blow                      No Blow Back

REC: 10' Mud (100% Mud)

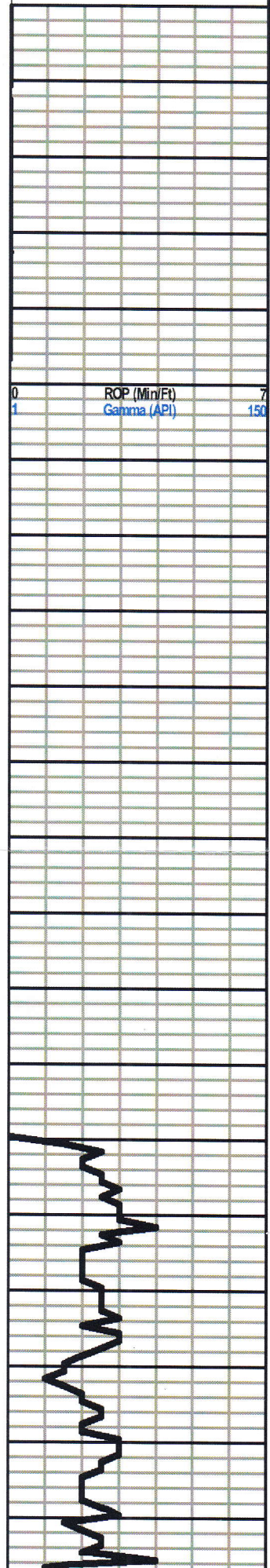
IFP: 11#/ 16#                      FFP: 16#/ 26#                      BHT: 128 deg  
 ISIP: 1139#                      FSIP: 1157#  
 IHP: 2316#                      FHP: 2225#



Dept

Litho

Oil Show



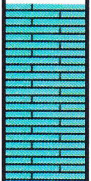
2550

2600

3450

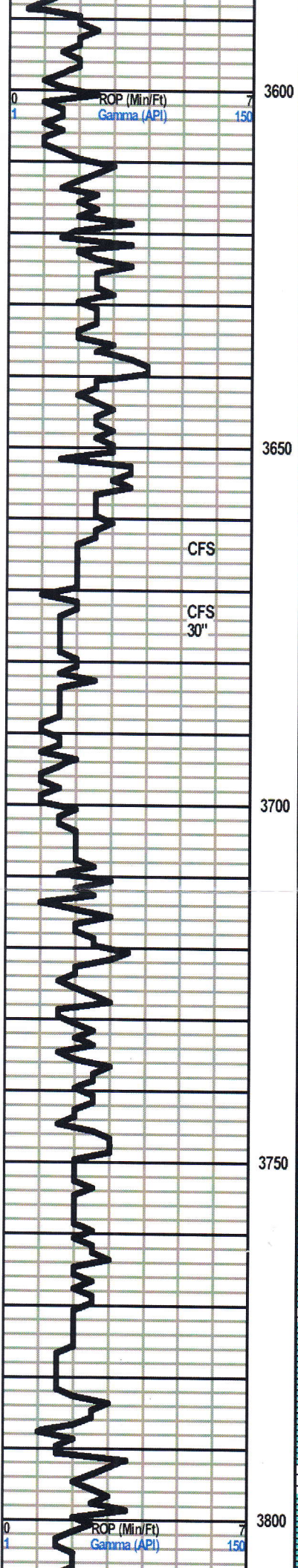
3500

3550



Anhydrite 2557 (+394)

Base/Anhy. 2589 (+362)



Sh., Dk-Gry Gry

Sh., Black Carb.

**Tarkio 3607 (-656)**

Ls., Lt-to Dk-Gry. Mott/Sing. Dense Fn-xln to Very-Fssl, Ooc., Ool., Frag., Crinoidal. Trcof F-G Inter-xln Por. No show.

LsCrm., Tan., Lt-Gry. Fn & Inter-xln., Abund.- Fssl., Dolo. In Part. Scat. Dead Oil Stn. No LFO. No Odor, no Fluor.

Sh., Gry., Brn., Red. Argil.

Ls., Crm., Tan, Gry., Mott/Sing Fssl to P-Fn-xln. Trc. of Blk spotty oil stn. NLFO., No odor. No Fluor.

Sh., Gry., Brn.Argil. to Silty

**Howard 3668 (-717)**

Crm., Tan, Gry., Mott/Sing.. P- Fn-xln., VFssl., Pred. Ool. P+ Inter-xln., Sub-Cherty. Tr of Brn to Blk. Oil stn., No LFO. No odor. No Fluor.

Ls., Wht., Tan, Gry., Very Chalky. V-PFn-xln to P-Ool. No show.

Ls., Wht., Crm., Tan, Gry., Dk-Gry., Chalky Dense Fn- xln. to small Ool., No Show.

Sh., Brn., Silty to Burnt Orange Argil.

Sh., Gry., Brn., Grn., Black

**Topeka 3741(-790)**

Ls., Wht., Crm Tan, Lt-Gry., Dense Fn-xln. to F-Inter-xln (sli Dolo.) Ool., Chalky in part. No show

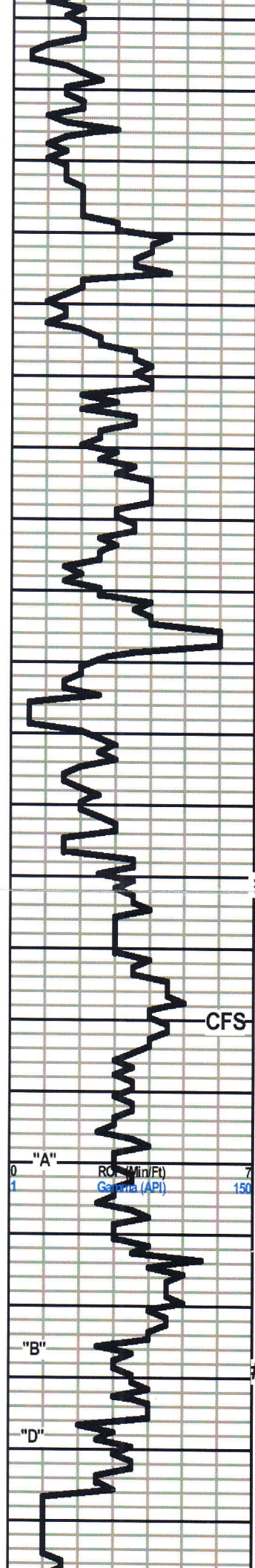
Sh., Gry., Grn., Brn., Argil. to Silty

Ls., Gry., Crm., Tan., Fn-xln to sli-Fssl. Sub-Chalky. No show

Sh., Brn., Gry., Gummy to Argil.

Ls., Wht., Lt-Gry to Gry., Fn-xln to sub-Chalky. No show.





**King Hill 3843 (-892)**

Sh., Black Carb.  
 Ls., Wht., Crm., Gry., Sing. Fn-xln. Chalky anf Fssl. Bo Show

Sh., Dk-Dry, Gry., Black, Brn. Argil., Silty  
 Ls., Gry., Tan Fssl., Fn-xln. with Good Fn-Suc., Dolo and xln. Porosity  
 Sh., Gry., Brn., Grn., Argil.

**Queen Hill 3906 (-955)**

Sh., Black Carb.  
 Ls., Crm., Tan, Brn., Fn-xln. to inter xln. Por., Sub-chalky sli Fssl., No how

Sh., Gry. and Brn. - Argil.

**Heebner 3952 (-1001)**

Sh., Black Carb.  
 Sh., Vari Color.

**Toronto 3974 (- 1023)**

Ls., Lt-Gry, Crm., Fn-xln., to V-Fssl., Frag. & Col. f-g scat. brn to blk. oil stn.  
 (Spotty to Saturated. Sli-SLFO. F-Odor.

**Lansing 3992 (-1041)**

Ls., Wht., Brn., Sing. Fn-xln., sli- Ool Scat Dead spotty edge Stn No LFO No Odor  
 or Fluor.

Ls., Wht., to Lt-Gry. Dense Micro-xln., sli-Cherty to Chalky. Barren.

Sh., Gry., Brn. Argil.

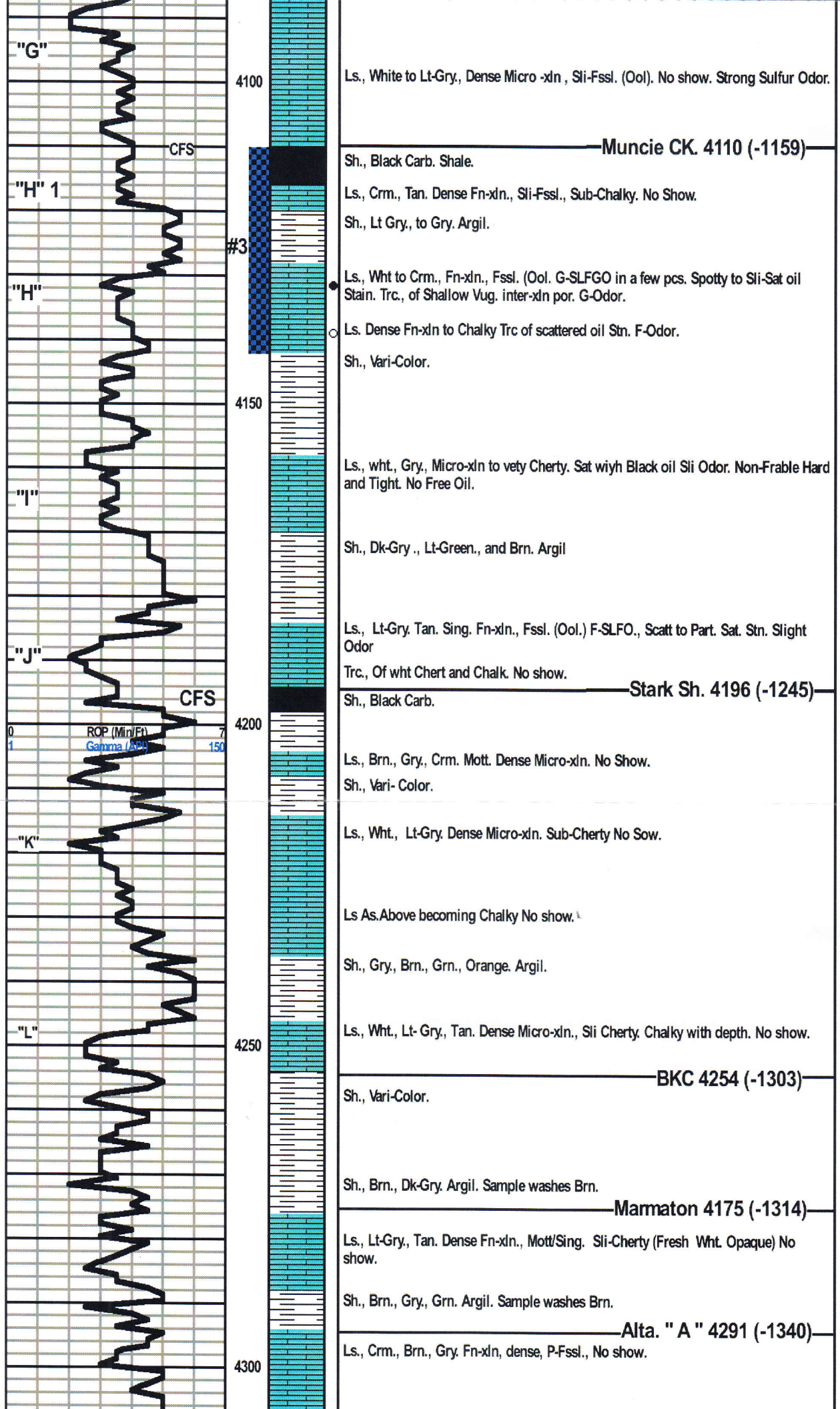
Ls., Wht., Crm., Tan. Sing. Dense Micro-xln to Oolitic, Trc. of shallow Inter-Ool. Vug  
 porosity with occasional Drk-Brn., to Black Oil stn. Faint to Fair Odor, No Fluor

Sh., Gry, Dk-Gry. Argil.  
 Ls., Crm., Wht., Lt-Gry. Sing. Fn-xln., Ool., with scattered Inter-xln., with F-show of  
 Brn. to Blk. Oil stn. Trc. of LFO. Fair Odor scattered Fluor.

Ls., Wht. to Lt- Gry, Sing Fn-xln to Good Intr-xln. Por. fssl. in Part. No show Very  
 strong Salt water odor.

Sh., Gry, Dk-Gry., Brn., and Lt-Grn. Argil.





"G"

4100

CFS

"H" 1

#3

"H"

4150

"I"

"J"

CFS

4200

ROP (Min/Ft)  
Gamma (API)

"K"

"L"

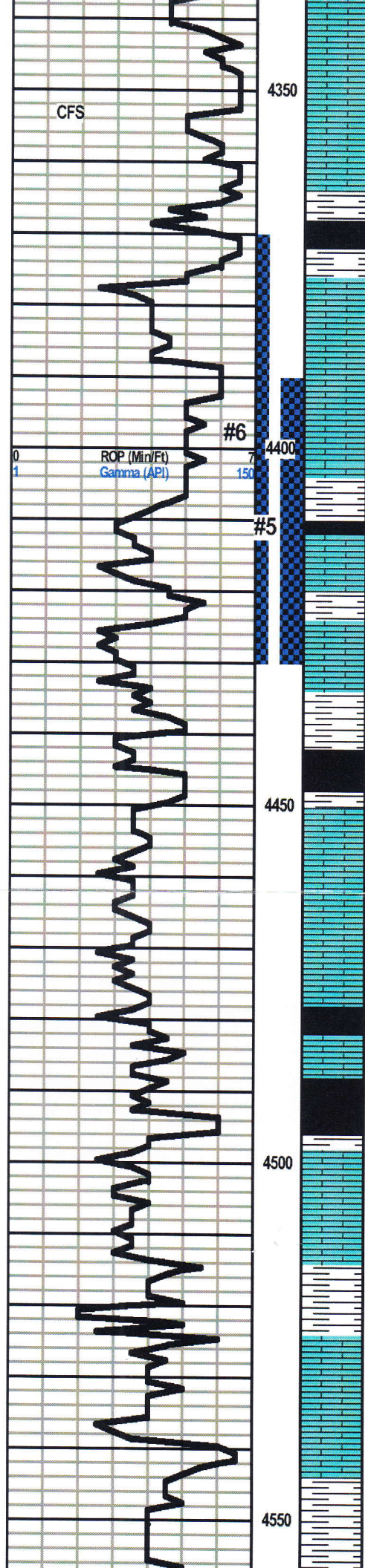
4250

**BKC 4254 (-1303)**

**Marmaton 4175 (-1314)**

**Alta. " A " 4291 (-1340)**





Ls., Lt-Gry, Tan, Brn. F-Fn-xln., Densified in Part. No show

Ls., Gry, Brn., Mott. P-Fn-xln., Trc Of Fssl. No show

Sh., Gry to Dk-Gry.

Sh., Black Carb.

S., Vari-Color. Argil. to Silty.

**Pawnee 4376 (-1425)**

Ls., Crm., Brn., Mott/Sing VP-Fn-xln. Chert, Gry., Tan, Fresh to sli Weathered., P=Shallow PP-Porosity No show.

Ls., As/above., Sub Chalky with depth., No show.

Sh., Dk-Gry, Gry., Brn., Black

Sh., Black Carb.

**Myrick St. 4412 (-1461)**

Ls., Tan., Gry., Brn., Fn-xln., to P-Fssl. Trc. of Brn to Black edge str., Sli-Odor., No LFO.

Sh., Gry, Grn. Argil.

Ls., Crm., Brn., Gry., Mott. F-Fn-xln., and Fssl. Porosity. Sli-Show of LFO., F-Odor. Scattered Bright Gold Fluor.

Sh., DK-Gry, Blach.

Sh., Black Carb.

**Fort Scott 4450 (-1499)**

Ls., Gry to Lt-Brn., Fn-xln., Off White transl. chert. trc of shallow PP-Inter-xln. porosity. Pyrite attached to Sub-Chalky Lime. No show.

Ls., As/ Above with noted increase in Chalk.

Ls., Brn., White. Mott/Sing. Dense Micro-xln., Ool., Chalky. No show.

Sh., black Carb.

Ls., Lt-Gry/. Gry., Brn. Dense Micro-xln. No show.

**Cher. Shale 4488 (-1537)**

Sh., Black Carb.

Sh., Gry, Grn., Brn.

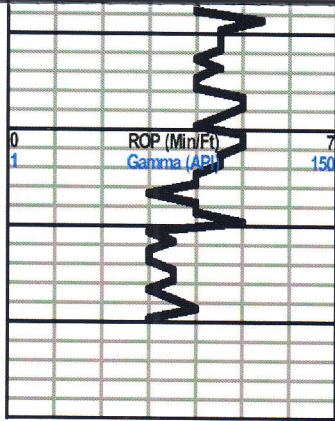
Ls., Lt-Gry, Gry., Brn., Mott. Dense Micro-xln., sub -chalky . No show

Sh., Black and Gry,

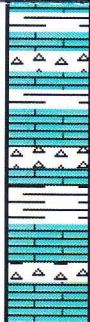
Sh., Brn Gry, Grn. Gummy to Argil.

Ls., Lt-Gry, Fssl., Dense Micro-xln., Sub-Chalky to Chalky. Trc of Fresh Opaque Chert. No show.

Sh., Abund. Vari-Color. Samples wash Brn.



4600



Ls., Wht., Lt-Gry with Fresh Wht., Opaque and Gry, Translucent.Frsh to sli-Weathered., Fssl., in part. No Show

Sh., Gry. & Grn., trc of Btn

RTD= 4620' (-1669) Reached @ 9:49 P.M. On 4-28-17.

LTD= 4618' (-1667) Reached @ 2.15 A.M. On 4-29-17.