

Seward SW 1-1

API # 15-185-23983-00-00

Operator: Stratakan Exploration, LLC Well Name & No: Seward SW #1-1  
 Location: 1613 FSL & 405 FEL Section 1-22s-14w County: Stafford State: Kansas  
 Rig No.: 14 Contractor: WW Drilling, LLC Tool Pusher: Noel Perez 620-271-4957  
 Drill Collars: 14 Size 6.26 x 2.25 Rig Phone: \_\_\_\_\_  
 Make Pump: F-1000 Liner & Stroke: 6x14 Spud \_\_\_\_\_  
 Approx. TD: 3800 Elevation: 1,912 G.L. 1923 KB Hole Complete: 3/31/17 @ 2:15 PM  
 Mud Co.: \_\_\_\_\_ Mud Engineer: \_\_\_\_\_ Water Well \_\_\_\_\_

Date	03/24/17	03/25/17	03/28/17	03/29/17	03/30/17	03/31/17	04/01/17	04/02/17		
Days	1-spud	2-OFF	3-Drlg	4 Drlg	5-TIHw/bit	6-Drlg	7-run 5 1/5	8-Done		
Depth		404	2100	3100	3467	3611	3800	3800		
Ft. Cut		404	1696	1050	317	144	189			
D.T.										
D.T.			0.25							
C.T.		8	3	0.5	15.25	19.25	19.75	7.25		
Bit Wt.	all	12,000	30,000	38,000	38,000	38,000	40,000			
RPM	100	100	85	85	80	80	80			
Pressure	450	550	1000	1000	1000	1000	1100			
SPM	60	60	60	60	60	60	60			
Mud Cost					8,061	8,060	9292	9292		
Mud Wt.		9.3	9.5	9.1	9	9.2	9.2			
Viscosity		34	32	55	53	60	49			
Water Loss					8	8	15			
Chlorides					2800	4000	9000			
L.C.M.		1#		2#	1.5 #	1#	1#			
Dev. Sur		.75°-404			1.25°-3467	1.5°-3611	1.75°-3800			
Dev. Sur										
Fuel		5508	5022	4455	4050	3635	3200	3150		
Water-Pit			FULL	FULL	Full	FULL	6'			
ACC Bit Hrs.		3.25	19.75	33	51.75	56.5	60.75			
Formation	sd-sh	sd-sh	sd-sh	sh-lm	sh-lm	sh-lm	sh-lm			
Weather		Clear	Cloudy	Rain	Cloudy		rain			

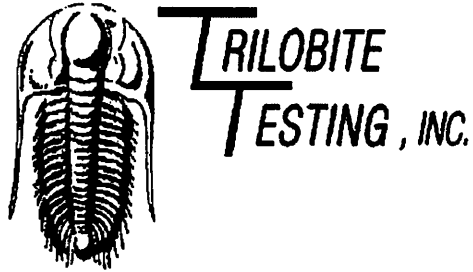
No.	Size	Type	Out	Ft.	Hrs.	Cum Hrs.	Bit Cond	Serial #	Tops
1	12 1/4	Sm-tooth	404	404	3.25	3.25	RR	3653	
2	7 7/8	Varel	3800	3396	60.75	64		1387950	
3									
4									

DEPTH	SIZE	SACKS	CEMENT MATERIAL	PLUG DOWN	DRILLED OUT	REMARKS
404	8 5/8	450	Common, 3% cc & 2% gel	3:00 PM		Quality Did Circulate
			30- Rat 20-Mouse			
3791.59	5 1/2"	140	Q PRO C	10:15 AM	2:15 PM	Quality

NO	INTERVAL	OPEN	SHUT	OPEN	SHUT	RECOVERY
1	3403'-3467'	30	45	30	45	120' MUD
2	3504'-3611'	30	45	30	45	248' Water 124' WCM 20' OCM
3						
4						
5						
6						
7						
8						
9						

Surface Casing Furnished by: Smith Supply. Ran 9 joints of 8 5/8" used 32# tally 389.97' set @ 404'

Remarks: Strap & weld surface by WW Kieth. Anhydrite @ 786'-821'. Displaced @ 2599' (550 bbls). Short trip @ 3467' (31 stands) 2.25 hrs. Pipe strap .64 long. LTD 3793, logged by Pioneer (3.75hrs) Ran 115 jts of 5 1/2 tallied 3781.59 set @ 3791. Plug down @ 10:15 am, Released rig @ 2:15 PM.



## DRILL STEM TEST REPORT

Prepared For: **StrataKan Exploration**

204 W Mill St  
Plainville, KS 67603

ATTN: Justin Prater

### **Seward SW #1-1**

#### **1-22s-14w Stafford,KS**

Start Date: 2017.03.30 @ 00:15:40

End Date: 2017.03.30 @ 07:02:10

Job Ticket #: 59930                      DST #: 1

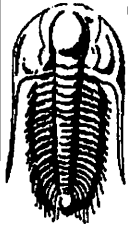
Trilobite Testing, Inc

PO Box 362 Hays, KS 67601

ph: 785-625-4778 fax: 785-625-5620

Printed: 2017.04.03 @ 08:18:30

StrataKan Exploration 1-22s-14w Stafford,KS Seward SW #1-1 DST # 1 LKC "B-F" 2017.03.30



**TRILOBITE  
TESTING, INC.**

## DRILL STEM TEST REPORT

StrataKan Exploration

1-22s-14w Stafford,KS

204 W Mill St  
Plainville, KS 67603

Seward SW #1-1

Job Ticket: 59930

DST#: 1

ATTN: Justin Prater

Test Start: 2017.03.30 @ 00:15:40

### GENERAL INFORMATION:

Formation: **LKC "B-F"**

Deviated: No Whipstock: ft (KB)

Time Tool Opened: 02:35:25

Time Test Ended: 07:02:10

Test Type: Conventional Bottom Hole (Initial)

Tester: Leal Cason

Unit No: 74

Interval: **3403.00 ft (KB) To 3467.00 ft (KB) (TVD)**

Total Depth: 3467.00 ft (KB) (TVD)

Hole Diameter: 7.88 inches Hole Condition: Good

Reference Elevations: 1925.00 ft (KB)

1912.00 ft (CF)

KB to GR/CF: 13.00 ft

Serial #: 8159

Inside

Press@RunDepth: 91.44 psig @ 3404.00 ft (KB)

Start Date: 2017.03.30

End Date:

2017.03.30

Capacity: 8000.00 psig

Last Calib.: 2017.03.30

Start Time: 00:15:41

End Time:

07:02:10

Time On Btm: 2017.03.30 @ 02:34:55

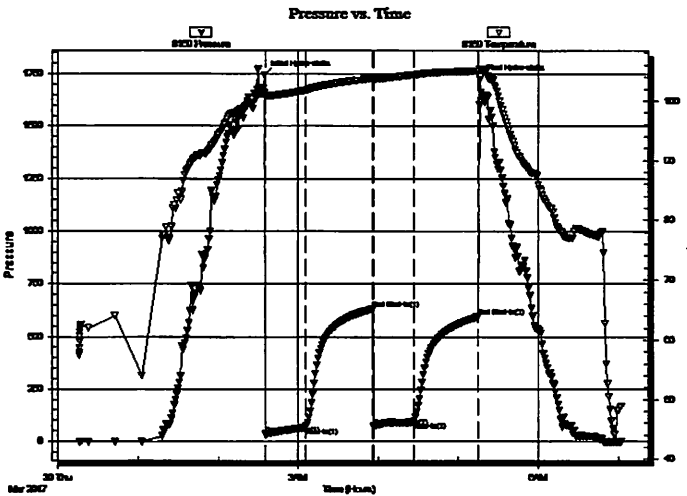
Time Off Btm: 2017.03.30 @ 05:16:10

TEST COMMENT: IF: Strong Blow, BOB in 21 minutes

IS: No Blow Back

FF: Weak 4" Blow

FSI: No Blow Back



### PRESSURE SUMMARY

Time (Min.)	Pressure (psig)	Temp (deg F)	Annotation
0	1746.76	101.37	Initial Hydro-static
1	33.59	100.86	Open To Flow (1)
31	64.59	101.75	Shut-In(1)
81	629.71	103.73	End Shut-In(1)
82	68.48	103.58	Open To Flow (2)
112	91.44	104.35	Shut-In(2)
160	593.17	104.98	End Shut-In(2)
162	1725.97	105.34	Final Hydro-static

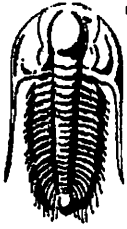
### Recovery

Length (ft)	Description	Volume (bbl)
120.00	SGCM 2%G 98%M	0.61

### Gas Rates

Choke (inches)	Pressure (psig)	Gas Rate (Mcf/d)





**TRILOBITE  
TESTING, INC.**

## DRILL STEM TEST REPORT

**TOOL DIAGRAM**

StrataKan Exploration

**1-22s-14w Stafford,KS**

204 W Mill St  
Plainville, KS 67603

**Seward SW #1-1**

Job Ticket: 59930

**DST#: 1**

ATTN: Justin Prater

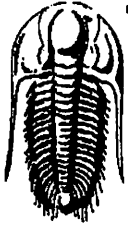
Test Start: 2017.03.30 @ 00:15:40

### Tool Information

Drill Pipe:	Length: 3270.00 ft	Diameter: 3.80 inches	Volume: 45.87 bbl	Tool Weight: 2100.00 lb
Heavy Wt. Pipe:	Length: 0.00 ft	Diameter: 0.00 inches	Volume: 0.00 bbl	Weight set on Packer: 25000.00 lb
Drill Collar:	Length: 118.00 ft	Diameter: 2.25 inches	Volume: 0.58 bbl	Weight to Pull Loose: 60000.00 lb
			<u>Total Volume: 46.45 bbl</u>	Tool Chased ft
Drill Pipe Above KB:	4.00 ft			String Weight: Initial 52000.00 lb
Depth to Top Packer:	3403.00 ft			Final 52000.00 lb
Depth to Bottom Packer:	ft			
Interval between Packers:	64.00 ft			
Tool Length:	83.00 ft			
Number of Packers:	2	Diameter: 6.75 inches		

Tool Comments:

Tool Description	Length (ft)	Serial No.	Position	Depth (ft)	Accum. Lengths
Shut In Tool	5.00			3389.00	
Hydraulic tool	5.00			3394.00	
Packer	5.00			3399.00	19.00 Bottom Of Top Packer
Packer	4.00			3403.00	
Stubb	1.00			3404.00	
Recorder	0.00	8159	Inside	3404.00	
Recorder	0.00	6806	Outside	3404.00	
Perforations	5.00			3409.00	
Change Over Sub	1.00			3410.00	
Drill Pipe	32.00			3442.00	
Change Over Sub	2.00			3444.00	
Perforations	20.00			3464.00	
Bullnose	3.00			3467.00	64.00 Bottom Packers & Anchor
<b>Total Tool Length:</b>		<b>83.00</b>			



**TRILOBITE  
TESTING, INC**

**DRILL STEM TEST REPORT**

**FLUID SUMMARY**

StrataKan Exploration

**1-22s-14w Stafford,KS**

204 W Mill St  
Plainville, KS 67603

**Seward SW #1-1**

Job Ticket: 59930

**DST#: 1**

ATTN: Justin Prater

Test Start: 2017.03.30 @ 00:15:40

**Mud and Cushion Information**

Mud Type: Gel Chem

Cushion Type:

Oil API:

deg API

Mud Weight: 9.00 lb/gal

Cushion Length: ft

Water Salinity: ppm

Viscosity: 53.00 sec/qt

Cushion Volume: bbl

Water Loss: 7.99 in<sup>3</sup>

Gas Cushion Type:

Resistivity: ohm.m

Gas Cushion Pressure: psig

Salinity: 2800.00 ppm

Filter Cake: 0.02 inches

**Recovery Information**

Recovery Table

Length ft	Description	Volume bbl
120.00	SGCM 2%G 98%M	0.608

Total Length: 120.00 ft      Total Volume: 0.608 bbl

Num Fluid Samples: 0

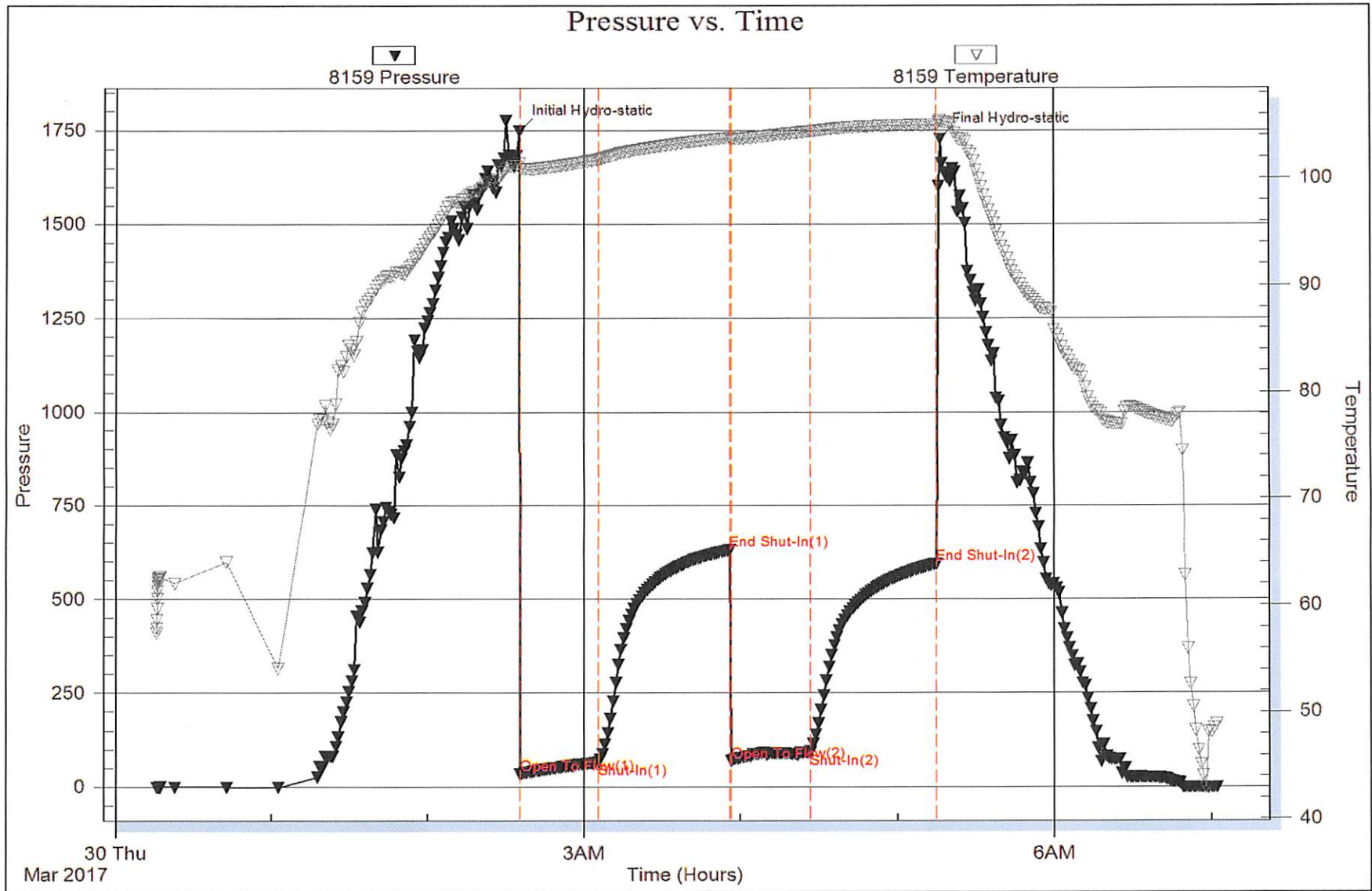
Num Gas Bombs: 0

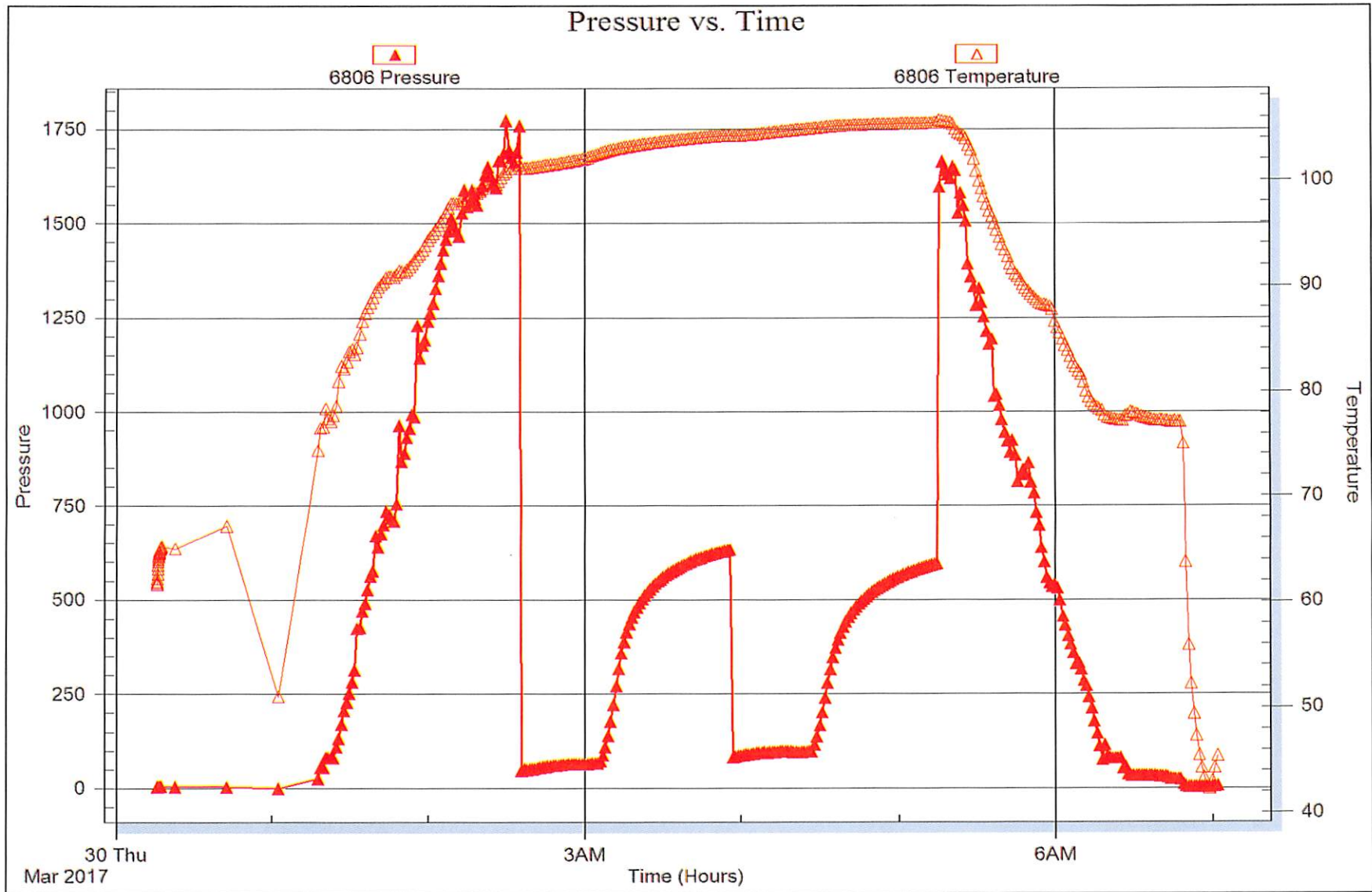
Serial #:

Laboratory Name:

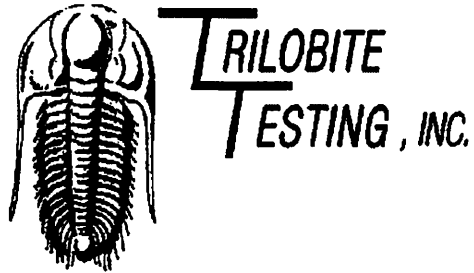
Laboratory Location:

Recovery Comments:









## DRILL STEM TEST REPORT

Prepared For: **StrataKan Exploration**

204 W Mill St  
Plainville, KS 67603

ATTN: Justin Prater

**Seward SW #1-1**

**1-22s-14w Stafford,KS**

Start Date: 2017.03.30 @ 21:37:56

End Date: 2017.03.31 @ 04:12:56

Job Ticket #: 59931                      DST #: 2

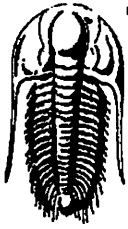
Trilobite Testing, Inc

PO Box 362 Hays, KS 67601

ph: 785-625-4778 fax: 785-625-5620

Printed: 2017.04.03 @ 08:17:46

StrataKan Exploration 1-22s-14w Stafford,KS Seward SW #1-1 DST # 2 Lower KC 2017.03.30



**TRILOBITE TESTING, INC.**

# DRILL STEM TEST REPORT

StrataKan Exploration

1-22s-14w Stafford, KS

204 W Mill St  
Plainville, KS 67603

Seward SW #1-1

Job Ticket: 59931

DST#: 2

ATTN: Justin Prater

Test Start: 2017.03.30 @ 21:37:56

## GENERAL INFORMATION:

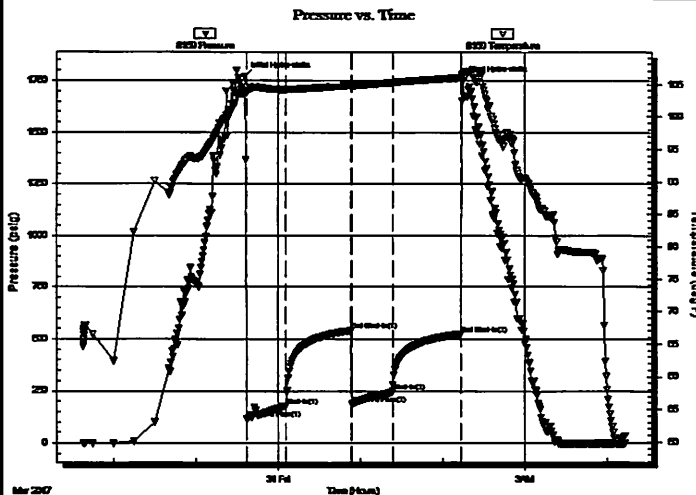
Formation: **Lower KC**  
 Deviated: **No Whipstock** ft (KB)  
 Time Tool Opened: 23:36:56  
 Time Test Ended: 04:12:56  
 Interval: **3504.00 ft (KB) To 3611.00 ft (KB) (TVD)**  
 Total Depth: 3611.00 ft (KB) (TVD)  
 Hole Diameter: 7.88 inches  
 Hole Condition: Good  
 Test Type: **Conventional Bottom Hole (Reset)**  
 Tester: **Leal Cason**  
 Unit No: **74**  
 Reference Elevations: 1925.00 ft (KB)  
 1912.00 ft (CF)  
 KB to GR/CF: 13.00 ft

## Serial #: 8159

Inside

Press@RunDepth: 249.70 psig @ 3505.00 ft (KB)  
 Start Date: 2017.03.30 End Date: 2017.03.31  
 Start Time: 21:37:57 End Time: 04:12:56  
 Capacity: 8000.00 psig  
 Last Calib.: 2017.03.31  
 Time On Btm: 2017.03.30 @ 23:35:41  
 Time Off Btm: 2017.03.31 @ 02:14:41

TEST COMMENT: IF: Strong Blow , BOB in 6 minutes  
 IS: No Blow Back  
 FF: Strong Blow , BOB in 8 minutes  
 FS: Weak Surface Blow Back



## PRESSURE SUMMARY

Time (Min.)	Pressure (psig)	Temp (deg F)	Annotation
0	1768.37	103.61	Initial Hydro-static
2	115.12	103.66	Open To Flow (1)
30	179.32	104.13	Shut-In(1)
78	540.26	104.79	End Shut-In(1)
78	188.76	104.71	Open To Flow (2)
108	249.70	105.21	Shut-In(2)
158	524.52	105.98	End Shut-In(2)
159	1750.40	106.53	Final Hydro-static

## Recovery

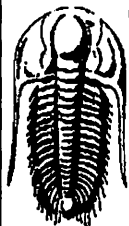
Length (ft)	Description	Volume (bbl)
248.00	Water	2.40
124.00	MCW 30%M 70%W	1.74
20.00	SOCM 2%O 98%M	0.28

\* Recovery from multiple tests

## Gas Rates

	Choke (inches)	Pressure (psig)	Gas Rate (Mcf/d)





**TRIOBITE  
TESTING, INC.**

## DRILL STEM TEST REPORT

**TOOL DIAGRAM**

StrataKan Exploration

**1-22s-14w Stafford,KS**

204 W Mill St  
Plainville, KS 67603

**Seward SW #1-1**

Job Ticket: 59931

**DST#: 2**

ATTN: Justin Prater

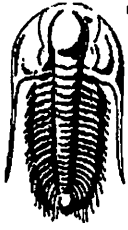
Test Start: 2017.03.30 @ 21:37:56

### Tool Information

Drill Pipe:	Length: 3364.00 ft	Diameter: 3.80 inches	Volume: 47.19 bbl	Tool Weight: 2100.00 lb
Heavy Wt. Pipe:	Length: 0.00 ft	Diameter: 0.00 inches	Volume: 0.00 bbl	Weight set on Packer: 25000.00 lb
Drill Collar:	Length: 118.00 ft	Diameter: 2.25 inches	Volume: 0.58 bbl	Weight to Pull Loose: 60000.00 lb
			<u>Total Volume: 47.77 bbl</u>	Tool Chased ft
Drill Pipe Above KB:	4.00 ft			String Weight: Initial 52000.00 lb
Depth to Top Packer:	3504.00 ft			Final 54000.00 lb
Depth to Bottom Packer:	ft			
Interval between Packers:	107.00 ft			
Tool Length:	133.00 ft			
Number of Packers:	2	Diameter: 6.75 inches		

Tool Comments:

Tool Description	Length (ft)	Serial No.	Position	Depth (ft)	Accum. Lengths
Shut In Tool	5.00			3483.00	
Hydraulic tool	5.00			3488.00	
Jars	5.00			3493.00	
Safety Joint	2.00			3495.00	
Packer	5.00			3500.00	26.00 Bottom Of Top Packer
Packer	4.00			3504.00	
Stubb	1.00			3505.00	
Recorder	0.00	8159	Inside	3505.00	
Recorder	0.00	6806	Outside	3505.00	
Perforations	7.00			3512.00	
Change Over Sub	1.00			3513.00	
Drill Pipe	64.00			3577.00	
Change Over Sub	2.00			3579.00	
Perforations	29.00			3608.00	
Bullnose	3.00			3611.00	107.00 Bottom Packers & Anchor
<b>Total Tool Length:</b>	<b>133.00</b>				



**TRILOBITE  
TESTING, INC**

# DRILL STEM TEST REPORT

**FLUID SUMMARY**

StrataKan Exploration

1-22s-14w Stafford,KS

204 W Mill St  
Plainville, KS 67603

Seward SW #1-1

Job Ticket: 59931

DST#: 2

ATTN: Justin Prater

Test Start: 2017.03.30 @ 21:37:56

## Mud and Cushion Information

Mud Type: Gel Chem

Cushion Type:

Oil API:

deg API

Mud Weight: 9.00 lb/gal

Cushion Length:

ft

Water Salinity:

78000 ppm

Viscosity: 53.00 sec/qt

Cushion Volume:

bbl

Water Loss: 7.98 in<sup>3</sup>

Gas Cushion Type:

Resistivity: ohm.m

Gas Cushion Pressure:

psig

Salinity: 2800.00 ppm

Filter Cake: 0.02 inches

## Recovery Information

Recovery Table

Length ft	Description	Volume bbl
248.00	Water	2.404
124.00	MCW 30%M 70%W	1.739
20.00	SOCM 2%O 98%M	0.281

Total Length: 392.00 ft      Total Volume: 4.424 bbl

Num Fluid Samples: 0

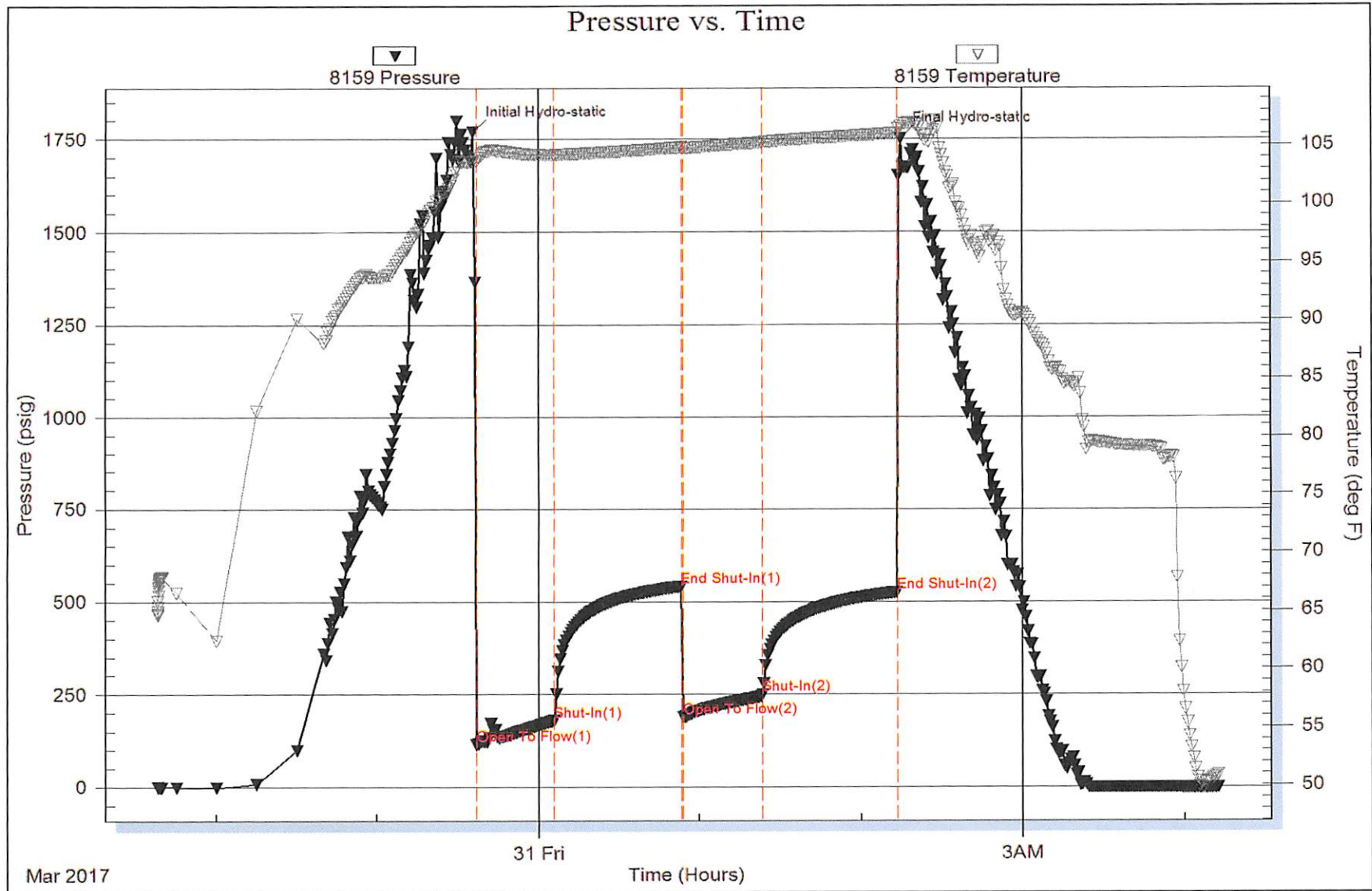
Num Gas Bombs: 0

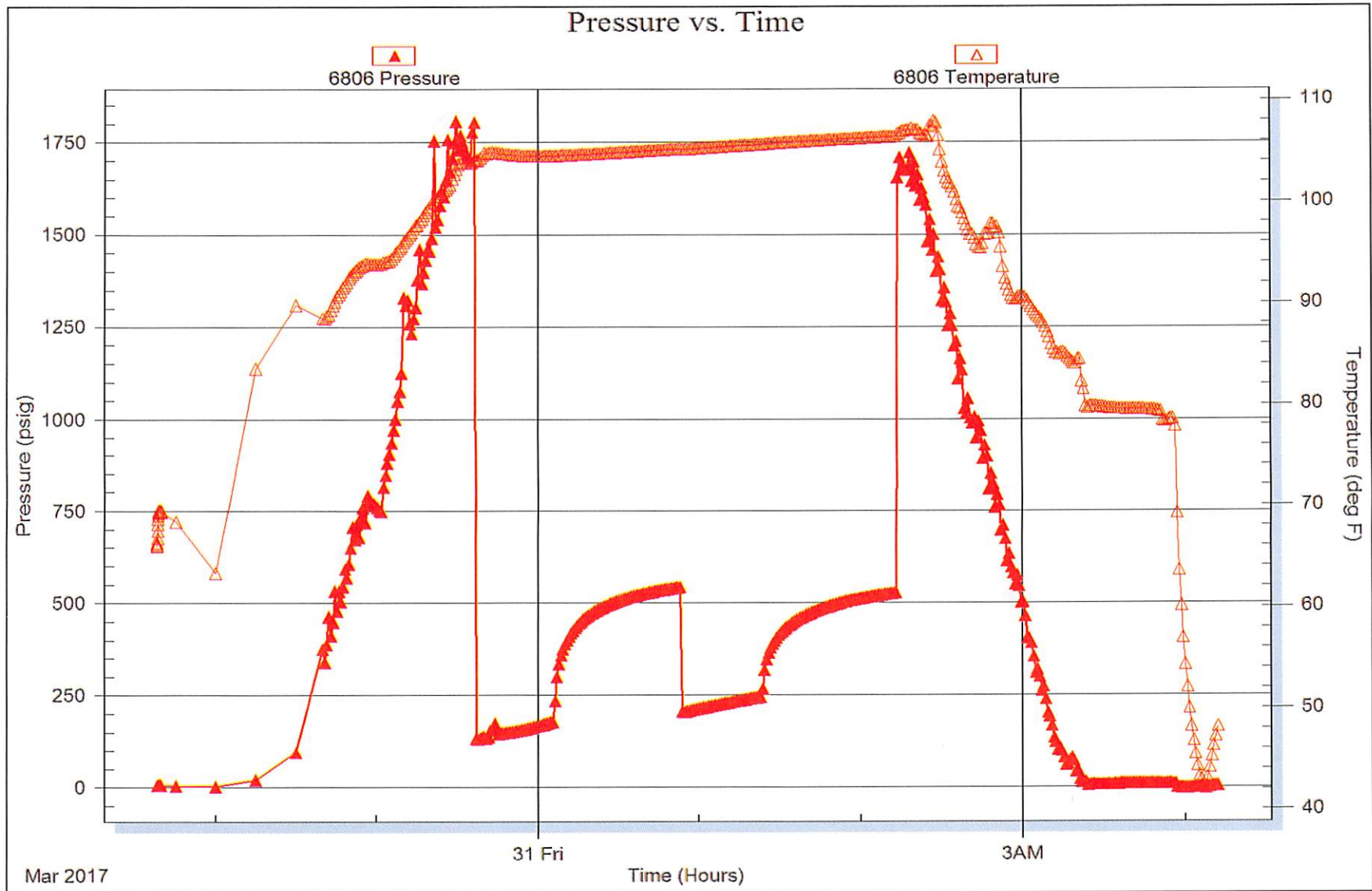
Serial #:

Laboratory Name:

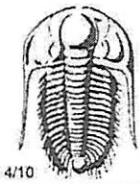
Laboratory Location:

Recovery Comments: RW w as .15 @ 46 degrees









# TRILOBITE TESTING INC.

1515 Commerce Parkway • Hays, Kansas 67601

## Test Ticket

NO. **59930**

Well Name & No. Seward Sw 1-1 Test No. 1 Date 03/29/17  
 Company Stratakan Exploration Elevation 1925 KB 1912 GL  
 Address 204 W. Mill St Plainville, KS 67603  
 Co. Rep / Geo. Justin Prater Rig WW 14  
 Location: Sec. 1 Twp. 22S Rge. 14W Co. Stafford State KS

Interval Tested 3403 - 3467 Zone Tested Lansing "B-F"  
 Anchor Length 64 Drill Pipe Run 3270 Mud Wt. 9.0  
 Top Packer Depth 3398 Drill Collars Run 118 Vis 53  
 Bottom Packer Depth 3403 Wt. Pipe Run 0 WL 8.0  
 Total Depth 3467 Chlorides 2800 ppm System LCM 1.5

Blow Description IF: Strong Blow, BOB in 21 minutes  
ISI: NO Blow BACK  
FF: Weak 4 inch Blow  
FSI: NO Blow BACK

Rec	Feet of	%gas	%oil	%water	%mud
<u>120</u>	<u>SGCM</u>	<u>2</u>		<u>98</u>	
Rec	Feet of	%gas	%oil	%water	%mud
Rec	Feet of	%gas	%oil	%water	%mud
Rec	Feet of	%gas	%oil	%water	%mud
Rec	Feet of	%gas	%oil	%water	%mud

Rec Total 120 BHT 105 Gravity NIC API RW NIC @ NIC °F Chlorides NIC ppm

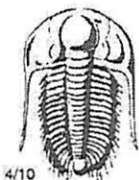
(A) Initial Hydrostatic 1745  Test 1050 T-On Location 21:30  
 (B) First Initial Flow 34  Jars \_\_\_\_\_ T-Started 00:15  
 (C) First Final Flow 65  Safety Joint \_\_\_\_\_ T-Open 02:35  
 (D) Initial Shut-In 630  Circ Sub \_\_\_\_\_ T-Pulled 05:14  
 (E) Second Initial Flow 68  Hourly Standby \_\_\_\_\_ T-Out 07:02  
 (F) Second Final Flow 91  Mileage 70 52.50 Comments \_\_\_\_\_  
 (G) Final Shut-In 593  Sampler \_\_\_\_\_  
 (H) Final Hydrostatic 1726  Straddle \_\_\_\_\_

Initial Open 30  Shale Packer \_\_\_\_\_  Ruined Shale Packer \_\_\_\_\_  
 Initial Shut-In 45  Extra Packer \_\_\_\_\_  Ruined Packer \_\_\_\_\_  
 Final Flow 30  Extra Recorder \_\_\_\_\_  Extra Copies \_\_\_\_\_  
 Final Shut-In 45  Day Standby \_\_\_\_\_ Sub Total 0  
 Sub Total 1102.50  Accessibility \_\_\_\_\_ Total 1102.50  
 MP/DST Disc't \_\_\_\_\_

Approved By \_\_\_\_\_ Our Representative [Signature]

Trilobite Testing Inc. shall not be liable for damaged of any kind of the property or personnel of the one for whom a test is made, or for any loss suffered or sustained, directly or indirectly, through the use of its equipment, or its statements or opinion concerning the results of any test, tools lost or damaged in the hole shall be paid for at cost by the party for whom the test is made.





# TRILOBITE TESTING INC.

1515 Commerce Parkway • Hays, Kansas 67601

## Test Ticket

NO. 59931

Well Name & No. Seward SW 1-1 Test No. 2 Date 03/30/17  
 Company Strata Kan Exploration Elevation 1925 KB 1912 GL  
 Address 204 W. Mill St Plainville, KS 67603  
 Co. Rep / Geo. Justin Proter Rig WW 14  
 Location: Sec. 1 Twp. 22S Rge. 14W Co. Stufford State KS

Interval Tested 3504 - 3611 Zone Tested LOWER KC  
 Anchor Length 107 Drill Pipe Run 3364 Mud Wt. 9.2  
 Top Packer Depth 3499 Drill Collars Run 118 Vis 64  
 Bottom Packer Depth 3504 Wt. Pipe Run 0 WL 8  
 Total Depth 3611 Chlorides 4000 ppm System LCM 1

Blow Description IF: Strong Blow, BOB in 6 minutes  
ISI: No Blow Back  
FF: Strong Blow, BOB in 8 minutes  
FST: weak surface Blow Back

Rec	Feet of	%gas	%oil	%water	%mud
<u>20</u>	<u>SOCM</u>	<u>2</u>		<u>98</u>	
<u>124</u>	<u>MCW</u>			<u>70</u>	<u>30</u>
<u>248</u>	<u>water</u>				

Rec Total 392 BHT 106 Gravity NIC API RW .15 @ 46 °F Chlorides 78,000 ppm

(A) Initial Hydrostatic <u>1768</u>	<input checked="" type="checkbox"/> Test <u>1050</u>	T-On Location <u>20:30</u>
(B) First Initial Flow <u>115</u>	<input checked="" type="checkbox"/> Jars <u>250</u>	T-Started <u>21:37</u>
(C) First Final Flow <u>179</u>	<input checked="" type="checkbox"/> Safety Joint <u>75</u>	T-Open <u>23:36</u>
(D) Initial Shut-In <u>540</u>	<input type="checkbox"/> Circ Sub	T-Pulled <u>02:13</u>
(E) Second Initial Flow <u>189</u>	<input type="checkbox"/> Hourly Standby	T-Out <u>04:12</u>
(F) Second Final Flow <u>250</u>	<input checked="" type="checkbox"/> Mileage <u>70</u> 52.50	Comments _____
(G) Final Shut-In <u>524</u>	<input type="checkbox"/> Sampler	_____
(H) Final Hydrostatic <u>1750</u>	<input type="checkbox"/> Straddle	<input type="checkbox"/> Ruined Shale Packer

Initial Open <u>30</u>	<input type="checkbox"/> Shale Packer	<input type="checkbox"/> Ruined Packer
Initial Shut-In <u>45</u>	<input type="checkbox"/> Extra Packer	<input type="checkbox"/> Extra Copies
Final Flow <u>30</u>	<input type="checkbox"/> Extra Recorder	Sub Total <u>0</u>
Final Shut-In <u>45</u>	<input type="checkbox"/> Day Standby	Total <u>1427.50</u>
	<input type="checkbox"/> Accessibility	MP/DST Disc't _____
	Sub Total <u>1427.50</u>	

Approved By \_\_\_\_\_ Our Representative [Signature]

Trilobite Testing Inc. shall not be liable for damaged of any kind of the property or personnel of the one for whom a test is made, or for any loss suffered or sustained, directly or indirectly, through the use of its equipment, or its statements or opinion concerning the results of any test, tools lost or damaged in the hole shall be paid for at cost by the party for whom the test is made.

**STRATAKAN EXPLORATION, LLC**  
 Seward SW #1-1  
 1613' FSL & 405' FEL Sec 1-22S-14W  
 Stafford Co., Kansas

1912' GL  
 1923' KB

Report: Complete in Arb

04-13-17 Matt's Cat leveled location after MO WW Rig #14. MIRU DS&W Well Svc DD & Honas Tank Svc swab tank. SDFN

04-14-17 RIH w/ sandpump & CO to BPTD @ 3751'. RU Pioneer Energy Svc, ran CBL w/ good cement bond throughout. PBTB 3751' & TOC @ 2640'. Swab fluid down to 2700', perf Arb 3720-22'(2') w/ 4" Expendable gun 4 spf. When coming out w/ gun had 50' fluid entry. Let set 30 min, 1" pull FL @ 1800', 900'(21.42 bbl) fluid entry w/ good show oil. Let set 1 hr, FL @ 1250', 550'(13.09 bbl) fluid entry. Swab test as follows:

Time	bbbl	cum	%	comments
1 <sup>st</sup> hr	15.08	15.08	9-3	FL 1250', 2-250' pulls, fresh water
2 <sup>nd</sup> hr	15.08	30.16	3-1	FL 1250', 2-250' pulls, salty water 2 <sup>nd</sup> pull
3 <sup>rd</sup> hr	14.50	44.66	1	FL 1250', 2-250' pulls, salty water, muddy oil
4 <sup>th</sup> hr	63.20	107.86	1	FL 2750', swb stdy, muddy oil
5 <sup>th</sup> hr	64.90	172.76	1	FL 2900', swb stdy, muddy oil

SDFN & Weekend

DS&W	\$ 3000.00	(4/13,14/17)
Wildcat Pump	\$12195.00	
Honas	\$ 850.00	
Scheck	\$ 1000.00	
Pioneer	\$ 2355.00	
Bob's Hauling	\$ 170.00	
Popp	\$ 600.00	
Total	\$20170.00	Cum \$20170.00

04-17-17 FL @ 850', 2870' FIH w/ 100' clean gassy oil(3%). RU Pioneer Energy Svc, set CIBP @ 3718'. Swab fluid down to 2700', perf Arb 3701-03' w/ 4" Expendable gun 4 spf w/ no fluid entry. Swab test as follows:

1 <sup>st</sup> hr	23.10	23.10	22	FL 3650', 4 pulls
2 <sup>nd</sup> hr	2.90	26.00	95	FL 3600', 2 pulls, No Visible Water
3 <sup>rd</sup> hr	1.16	27.16	95	FL 3610', 2 pulls, NVW
4 <sup>th</sup> hr	1.70	28.76	95	FL 3610', 2 pulls, NVW
5 <sup>th</sup> hr	2.00	30.76	95	FL 3610', 2 pulls, NVW

Seward SW #1-1

6<sup>th</sup> hr 1.70 32.46 95 FL 3610', 2 pulls, NVW  
 7<sup>th</sup> hr 2.00 34.46 95 FL 3610', 2 pulls, NVW  
 SDFN

DS&W \$ 2400.00  
 Bob's Hauling \$ 350.00  
 Pioneer \$ 2200.00  
 Popp \$ 600.00  
 Total \$ 5550.00 Cum \$25720.00

04-18-17 FL @ 2800', 850' FIH w/ 700' oil(82%). TIH w/ tbg as follows:

			Set @
2-7/8" 8rd EUE TP MA	1jt	14.90'	3724.32'
2-7/8" 8rd SN	1jt	1.10'	3709.42'
2-7/8" 8rd EUE tbg	116jts	3695.32'	3708.32'
2-7/8" 8rd EUE tbg subs	1jts	4.00'	13.00'
Below KB		9.00'	

Landed tbg 5' off bottom. Dump 5 gal corrosion inhibitor via tbg to run pump & rods through. TIH w/ pump & rods as follows:

2 1/2"x 1 1/2"x 14' RWB w/ 6' GA  
 3/4"x 2' pony rod w/ pump guide  
 7 - 1 1/2"x 25' sinker bars  
 70 - 3/4"x 25' sucker rods  
 69 - 7/8"x 25' sucker rods  
 7/8"x 4' pony rods  
 1 1/4"x 22' PR w/ 10' PRL

Longstroke well w/ good pump action, space out pump & clamp off.  
 RDMO DD

DS&W \$ 2000.00  
 Wildcat \$20944.00  
 Popp \$ 600.00  
 Total \$23544.00 Cum \$49264.00

**STRATAKAN EXPLORATION, LLC**

**Seward SW #1-1**

**1613' FSL & 405' FEL Sec 1-22S-14W**

**Stafford Co., Kansas**

**1912' GL**

**1923' KB**

**Completion Report - Run production csg**

04-01-17      7:00 am – Wait on completion rig, Cut 3800' of 7-7/8" hole. RU Pioneer Energy Svc, ran Dual Compensated Porosity, Dual Induction, Sonic & Microresistivity Logs, LTD – 3793'. TIH w/ bit, CTCH, LDDP & ND. Ran 114 jts of Used Smith Supply 5 1/2" 8rd 15.5# J-55 R-2&3 LTC csg. Tallied 3781.59', set @ 4791', 2' off bottom. Shoe jt 32.65' w/ latch down @ 3758'. Ran turbilizer/centrilizers @ 3758', 3720', 3688', 3655', 3639', 3606' & 3575'. RU Quality Oilwell Cementing & cemented w/ 12 bbl mud flush, 20 bbl 2% KCL followed w/ 140 sx Q PRO C cement. Had good circulation throughout. Landed plug @ 10:15 am 4/01/17 w/ 1500# - latch down held. Plug rat hole w/ 30 sx cement & mouse hole w/ 20 sx cement. Set slips & release rig @ 12:15 pm 4/01/17. Equipment left on location, 4 jt csg = 116.55' threads off.

# QUALITY OILWELL CEMENTING, INC.

Federal Tax I.D.# 20-2886107

Phone 785-483-2025  
Cell 785-324-1041

Home Office P.O. Box 32 Russell, KS 67665

No. 1690

Date	4-1-17	Sec.	1	Twp.	22	Range	14	County	Stafford	State	Ks	On Location		Finish	10:15AM
------	--------	------	---	------	----	-------	----	--------	----------	-------	----	-------------	--	--------	---------

Location 281 + K-19 Hwy-3W, 1/2 N, W1 into

Lease	Seward SW	Well No.	1-1	Owner	To Quality Oilwell Cementing, Inc. You are hereby requested to rent cementing equipment and furnish cementer and helper to assist owner or contractor to do work as listed.
Contractor	WW14				
Type Job	Longstring				
Hole Size	7 7/8"	T.D.	3800'	Charge To	Stratagan Exploration
Csg.	5 1/2" New	Depth	3791.59'	Street	
Tbg. Size		Depth		City	State
Tool		Depth		The above was done to satisfaction and supervision of owner agent or contractor.	
Cement Left in Csg.	32.65	Shoe Joint	32.65'	Cement Amount Ordered 190 @ Pro C 10% Salt 5' G. lonite	
Meas Line		Displace	89 1/2 BCS	500 gal mud Clear 48 - 110 BCS KCL	

**EQUIPMENT**

Pumptrk	16	No.		Cementer	Brett	Common	190 Pro-C
				Helper		Poz. Mix	
Bulktrk	3	No.		Driver	David	Gel.	
				Driver		Calcium	KCL 11 gal
Bulktrk	p.u.	No.		Driver	Rick	Hulls	

**JOB SERVICES & REMARKS**

Remarks:		Salt	17
Rat Hole		Flowseal	
Mouse Hole		Kol-Seal	800#
Centralizers	1-7	Mud CLR	48
Baskets	pipe on bottom break Circulation	CFL-117 or CD110 CAF	38
D/V or Port Collar pump	50 gal mud Clear 48	Sand	
Pump 20 BCS	ket plug Rthole w/ 30sx	Handling	215
plug manhole w/ 20 sx	Hook to casing	Mileage	
mix 100 sx cement	Shut down	<b>FLOAT EQUIPMENT</b>	
wash pump & lines	Displaced plug	Guide Shoe	
w/ 89 1/2 BCS	Released & held.	Centralizer	7

Lift pressure	700 #	Baskets	
Land plug to	1500 #	AFU Inserts	
		Float Shoe	
		Latch Down	

Pumptrk Charge	prod string
Mileage	19

Signature <i>Richard Papp</i>	Tax	
	Discount	
	Total Charge	

## GENERAL TERMS AND CONDITIONS

**DEFINITIONS:** In these terms and conditions, "Quality" shall mean Quality Oilwell Cementing, Inc., and "Customer" shall refer to the party identified by that term on the front of this contract. As applicable, "Job" relates to the services described on the front side of this contract, "merchandise" refers to the material described on the front of this contract and to any other materials, products, or supplies used, sold, or furnished under the requirements of this contract.

– **TERMS:** Unless satisfactory credit has been established, "CUSTOMER" must tender full cash payment to "QUALITY" before the job is undertaken or merchandise is delivered. If satisfactory credit has been established, the terms of payment for the job and/or merchandise, including bulk cement, are net cash, payable in 30 days from the completion of the job and/or delivery of the merchandise. For all past due invoices, "CUSTOMER" agrees to pay interest on amounts invoiced at a rate of 18 percent per annum until paid. Notwithstanding the foregoing in no event shall this Contract provide for interest exceeding the maximum rate of interest that "CUSTOMER" may agree to pay under applicable law. If any such interest should be provided for, it shall be and hereby is deemed to be a mistake, and this contract shall be automatically reformed to lower the rate of interest to the maximum legal contract rate, any amounts previously paid as excess interest shall be deducted from the amounts owing from the "CUSTOMER" or at the option of "QUALITY," refunded directly to "CUSTOMER." For purposes of this paragraph, QUALITY and CUSTOMER agree that KANSAS law shall apply. Any discounts granted with this contract are null and void if the charges are not paid when due.

– **ATTORNEY FEES:** In any legal action or proceeding between the parties to enforce any of the terms of this Service Contract, or in any way pertaining to the term of this Contract, the prevailing party shall be entitled to recover all expenses, including, but not limit to, a reasonable sum as and attorney's fees.

– **PRICES AND TAXES:** All merchandise listed in "QUALITY'S" current price shall schedule are F.O.B. QUALITY'S local station and are subject to change without notice. All prices are exclusive of any federal, state, local, or special taxes for the sale or use of the merchandise or services listed. The amount of taxes required to be paid by QUALITY shall be added to the quoted prices charged to CUSTOMER.

– **TOWING CHARGES:** QUALITY will make a reasonable attempt to get to and from each job site using its own equipment. Should QUALITY be unable to do so because of poor or inadequate road conditions, and should it become necessary to employ a tractor or other pulling equipment to get to or from the job site, the tractor or pulling equipment will be supplied by CUSTOMER or, if furnished by QUALITY, will be charged to and paid by CUSTOMER.

– **PREPARATION CHARGES:** If a job and/or merchandise is ordered and CUSTOMER cancels the order after preparation of a chemical solution or other material, CUSTOMER will pay QUALITY for the expenses incurred by QUALITY as a result of the cancellation.

– **DEADHAUL CHARGES:** Unless otherwise specified on the front of this Contract, a deadhaul charges as set forth in QUALITY'S current price book will be charged each way for each service unit which is ordered by CUSTOMER but not used.

– **SERVICE CONDITIONS AND LIABILITIES:** 1. QUALITY carries public liability and property damage insurance, but since there are so many uncertain and unknown conditions beyond QUALITY'S control, QUALITY shall not be liable for injuries to property or persons or for loss or damage arising from the performance of the job or delivery of the merchandise. Customer shall be responsible for and indemnify, defend, and hold harmless QUALITY, its officers, agents and employees, from and against any and all claims or suits for:

(A) Damage to property or for bodily injury, sickness, disease, or death, brought by any person, including CUSTOMER and/or the well owner; and:

(B) Oil spills, pollution, surface or sub-surface damage, injury to the well, reservoir loss, or damage arising from a well blowout arising out of or in connection with QUALITY'S performance of the job or furnishing of merchandise in accordance with this contract, unless such loss or damage is caused by the willful misconduct or gross negligence of QUALITY or its employees.

2. With respect to any of QUALITY'S tools, equipment, or instruments which are lost in the well or damaged when performing or attempting to perform the job or, in the case of marine operations, are lost or damaged at any time after delivery to the landing for CUSTOMER and before return to QUALITY at the landing, CUSTOMER shall either recover the lost item without cost to QUALITY or reimburse QUALITY the current replacement cost of the item unless the loss or damage results from the sole negligence of QUALITY or its employees.

3. QUALITY does not assume any liability or responsibility for damages or conditions resulting from chemical action in cements caused by contamination of water or other fluids.

**WARRANTIES:** 1. QUALITY warrants all merchandise manufactured or furnished by it to be free from defects in material and workmanship under normal use and service when installed, and used, and/or serviced in the manner provided and intended. QUALITY'S obligation under this warranty is expressly limited to repair replacement, or allowance for credit, at its option, for any merchandise which is determined by QUALITY to be defective. THIS IS THE SOLE WARRANTY OF QUALITY AND NO OTHER WARRANTY IS APPLICABLE, EITHER EXPRESS OR OTHERWISE IMPLIED, IN FACT OR IN LAW, INCLUDING ANY WARRANTY AS TO MERCHANTABILITY OR FITNESS FOR A PARTICULAR USE OR PURPOSE, CUSTOMER'S sole and only remedy with regard to any defective merchandise shall be the repair or replacement thereof or allowance for credit as herein provided, and QUALITY shall not be liable for any consequential, special, incidental, or punitive damages resulting from or caused by defective materials, products or supplies.

2. More specifically:

(A) Nothing in this contract shall be construed as a warranty by QUALITY of the success or the effectiveness of the result of any work done or merchandise used, sold, or furnished under this contract.

(B) Nothing in this contract shall be construed as a warranty of the accuracy or correctness of any facts, information, or data furnished by QUALITY or any interpretation of test, meter readings, chart information, analysis or research, or recommendations made by QUALITY, unless the inaccuracy or incorrectness is caused by the willful misconduct or gross negligence of QUALITY or its employees in the preparation or furnishing of such facts, information or data. (C) Work done by QUALITY shall be under the direct supervision and control of the CUSTOMER or his agent and QUALITY will accomplish the job as an independent contractor and not as an employee or agent of the CUSTOMER.

# QUALITY OILWELL CEMENTING, INC.

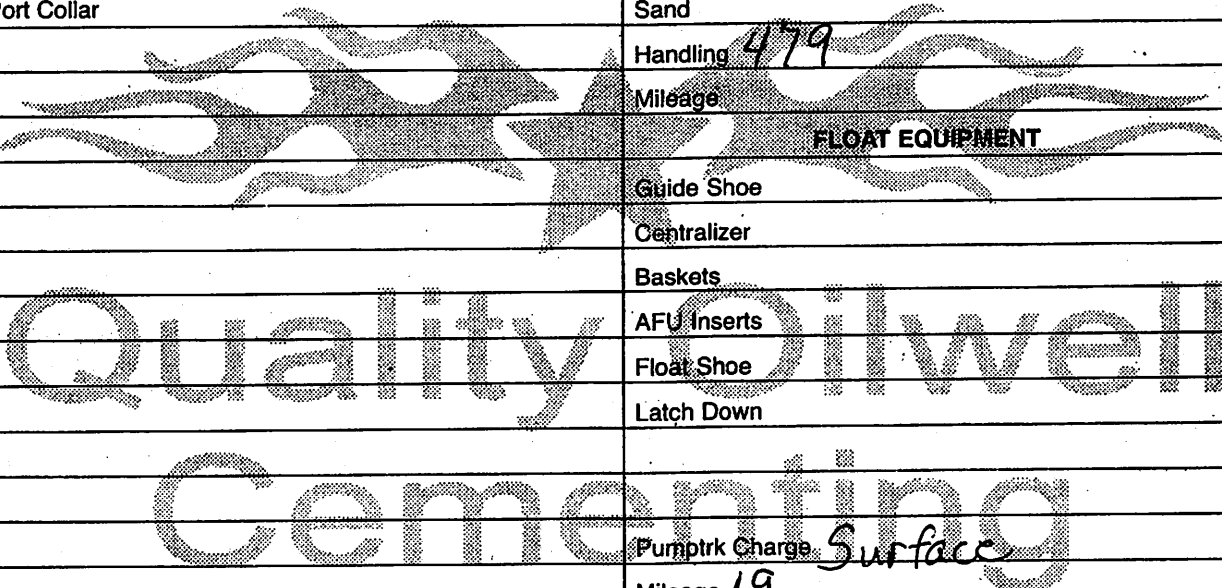
Federal Tax I.D.# 20-2886107

Phone 785-483-2025  
Cell 785-324-1041

Home Office P.O. Box 32 Russell, KS 67665

No. 1685

Date	3-24-17	Sec.	1	Twp.	22	Range	14	County	Stafford	State	Ks	On Location		Finish	3:00 PM				
Lease								Location		281 + K-19 Hwy Jct - 3W, 1/2 N, w/into									
Seward SW				Well No.		1-1													
Contractor				Ww #14		Owner													
Type Job				Surface		To Quality Oilwell Cementing, Inc. You are hereby requested to rent cementing equipment and furnish cementer and helper to assist owner or contractor to do work as listed.													
Hole Size		12 1/4"		T.D.		404'		Charge To								Stratoken Exploration LLC.			
Csg.		8 5/8"		Depth		404'		Street											
Tbg. Size				Depth				City				State							
Tool				Depth				The above was done to satisfaction and supervision of owner agent or contractor.											
Cement Left in Csg.		15'		Shoe Joint		15'		Cement Amount Ordered								450 60/40 4% CC 2 1/2 Gel			
Meas Line		Displace		24 1/2 BLS		1/2# Flo-seal													
<b>EQUIPMENT</b>												Common				270			
Pumptrk		16		No.		Cement		Helper				Travis							
Bulktrk		19		No.		Driver		Doug				Poz. Mix				180			
Bulktrk		pu		No.		Driver		Rick				Gel.				9			
Bulktrk		pu		No.		Driver		Rick				Calcium				20			
<b>JOB SERVICES &amp; REMARKS</b>												Hulls							
Remarks:		Cement did		Circulate		Salt													
Rat Hole						Flowseal				225									
Mouse Hole						Kol-Seal													
Centralizers						Mud CLR 48													
Baskets						CFL-117 or CD110 CAF 38													
D/V or Port Collar						Sand													
						Handling				479									
						Mileage													
<b>FLOAT EQUIPMENT</b>																			
						Guide Shoe													
						Centralizer													
						Baskets													
						AFU Inserts													
						Float Shoe													
						Latch Down													
						Pumptrk Charge				Surface									
						Mileage				19									
												Tax							
												Discount							
												Total Charge							
X Signature		Noel Roney																	





## GENERAL TERMS AND CONDITIONS

**DEFINITIONS:** In these terms and conditions, "Quality" shall mean Quality Oilwell Cementing, Inc., and "Customer" shall refer to the party identified by that term on the front of this contract. As applicable, "Job" relates to the services described on the front side of this contract, "merchandise" refers to the material described on the front of this contract and to any other materials, products, or supplies used, sold, or furnished under the requirements of this contract.

– **TERMS:** Unless satisfactory credit has been established, "CUSTOMER" must tender full cash payment to "QUALITY" before the job is undertaken or merchandise is delivered. If satisfactory credit has been established, the terms of payment for the job and/or merchandise, including bulk cement, are net cash, payable in 30 days from the completion of the job and/or delivery of the merchandise. For all past due invoices, "CUSTOMER" agrees to pay interest on amounts invoiced at a rate of 18 percent per annum until paid. Notwithstanding the foregoing in no event shall this Contract provide for interest exceeding the maximum rate of interest that "CUSTOMER" may agree to pay under applicable law. If any such interest should be provided for, it shall be and hereby is deemed to be a mistake, and this contract shall be automatically reformed to lower the rate of interest to the maximum legal contract rate, any amounts previously paid as excess interest shall be deducted from the amounts owing from the "CUSTOMER" or at the option of "QUALITY," refunded directly to "CUSTOMER." For purposes of this paragraph, QUALITY and CUSTOMER agree that KANSAS law shall apply. Any discounts granted with this contract are null and void if the charges are not paid when due.

– **ATTORNEY FEES:** In any legal action or proceeding between the parties to enforce any of the terms of this Service Contract, or in any way pertaining to the term of this Contract, the prevailing party shall be entitled to recover all expenses, including, but not limit to, a reasonable sum as and attorney's fees.

– **PRICES AND TAXES:** All merchandise listed in "QUALITY'S" current price shall schedule are F.O.B. QUALITY'S local station and are subject to change without notice. All prices are exclusive of any federal, state, local, or special taxes for the sale or use of the merchandise or services listed. The amount of taxes required to be paid by QUALITY shall be added to the quoted prices charged to CUSTOMER.

– **TOWING CHARGES:** QUALITY will make a reasonable attempt to get to and from each job site using its own equipment. Should QUALITY be unable to do so because of poor or inadequate road conditions, and should it become necessary to employ a tractor or other pulling equipment to get to or from the job site, the tractor or pulling equipment will be supplied by CUSTOMER or, if furnished by QUALITY, will be charged to and paid by CUSTOMER.

– **PREPARATION CHARGES:** If a job and/or merchandise is ordered and CUSTOMER cancels the order after preparation of a chemical solution or other material, CUSTOMER will pay QUALITY for the expenses incurred by QUALITY as a result of the cancellation.

– **DEADHAUL CHARGES:** Unless otherwise specified on the front of this Contract, a deadhaul charges as set forth in QUALITY'S current price book will be charged each way for each service unit which is ordered by CUSTOMER but not used.

– **SERVICE CONDITIONS AND LIABILITIES:** 1. QUALITY carries public liability and property damage insurance, but since there are so many uncertain and unknown conditions beyond QUALITY'S control, QUALITY shall not be liable for injuries to property or persons or for loss or damage arising from the performance of the job or delivery of the merchandise. Customer shall be responsible for and indemnify, defend, and hold harmless QUALITY, its officers, agents and employees, from and against any and all claims or suits for:

(A) Damage to property or for bodily injury, sickness, disease, or death, brought by any person, including CUSTOMER and/or the well owner; and:

(B) Oil spills, pollution, surface or sub-surface damage, injury to the well, reservoir loss, or damage arising from a well blowout arising out of or in connection with QUALITY'S performance of the job or furnishing of merchandise in accordance with this contract, unless such loss or damage is caused by the willful misconduct or gross negligence of QUALITY or its employees.

2. With respect to any of QUALITY'S tools, equipment, or instruments which are lost in the well or damaged when performing or attempting to perform the job or, in the case of marine operations, are lost or damaged at any time after delivery to the landing for CUSTOMER and before return to QUALITY at the landing, CUSTOMER shall either recover the lost item without cost to QUALITY or reimburse QUALITY the current replacement cost of the item unless the loss or damage results from the sole negligence of QUALITY or its employees.

3. QUALITY does not assume any liability or responsibility for damages or conditions resulting from chemical action in cements caused by contamination of water or other fluids.

**WARRANTIES:** 1. QUALITY warrants all merchandise manufactured or furnished by it to be free from defects in material and workmanship under normal use and service when installed, and used, and/or serviced in the manner provided and intended. QUALITY'S obligation under this warranty is expressly limited to repair replacement, or allowance for credit, at its option, for any merchandise which is determined by QUALITY to be defective. THIS IS THE SOLE WARRANTY OF QUALITY AND NO OTHER WARRANTY IS APPLICABLE, EITHER EXPRESS OR OTHERWISE IMPLIED, IN FACT OR IN LAW, INCLUDING ANY WARRANTY AS TO MERCHANTABILITY OR FITNESS FOR A PARTICULAR USE OR PURPOSE, CUSTOMER'S sole and only remedy with regard to any defective merchandise shall be the repair or replacement thereof or allowance for credit as herein provided, and QUALITY shall not be liable for any consequential, special, incidental, or punitive damages resulting from or caused by defective materials, products or supplies.

2. More specifically:

(A) Nothing in this contract shall be construed as a warranty by QUALITY of the success or the effectiveness of the result of any work done or merchandise used, sold, or furnished under this contract.

(B) Nothing in this contract shall be construed as a warranty of the accuracy or correctness of any facts, information, or data furnished by QUALITY or any interpretation of test, meter readings, chart information, analysis or research, or recommendations made by QUALITY, unless the inaccuracy or incorrectness is caused by the willful misconduct or gross negligence of QUALITY or its employees in the preparation or furnishing of such facts, information or data. (C) Work done by QUALITY shall be under the direct supervision and control of the CUSTOMER or his agent and QUALITY will accomplish the job as an independent contractor and not as an employee or agent of the CUSTOMER.