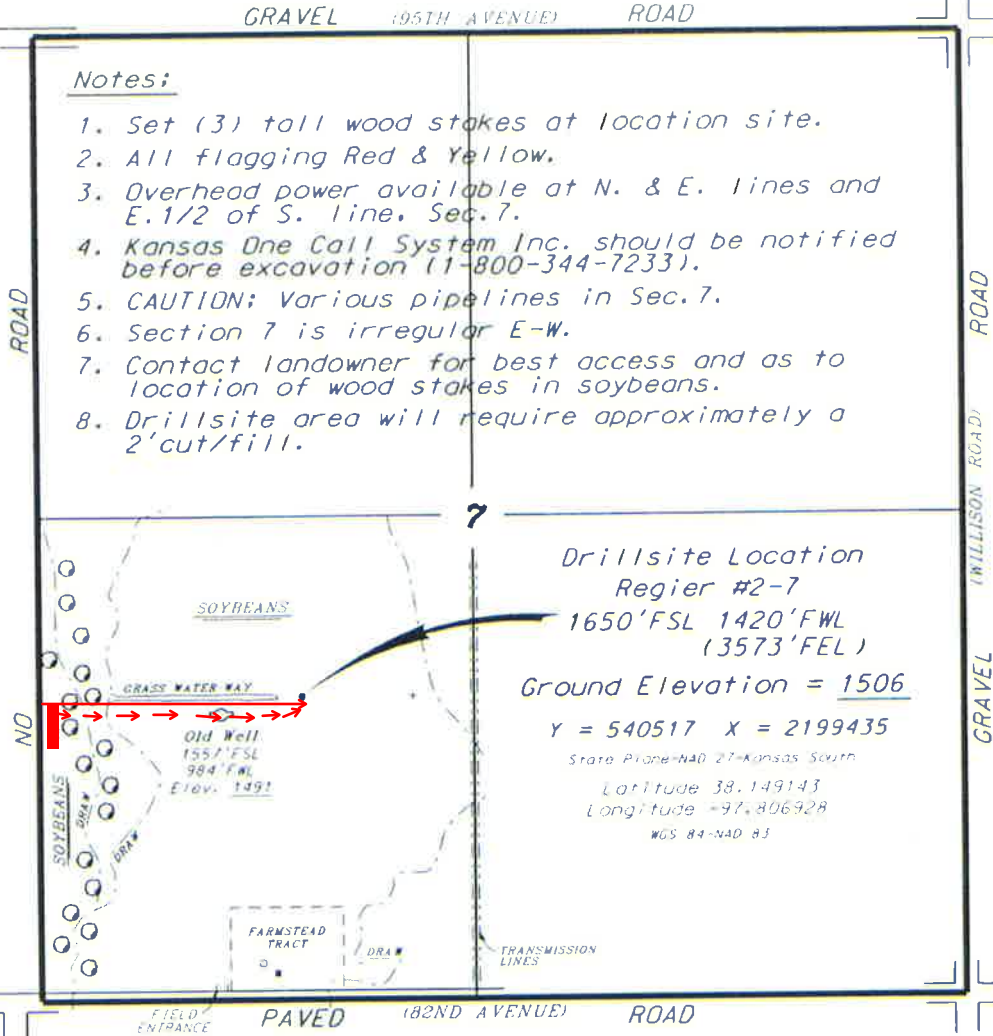


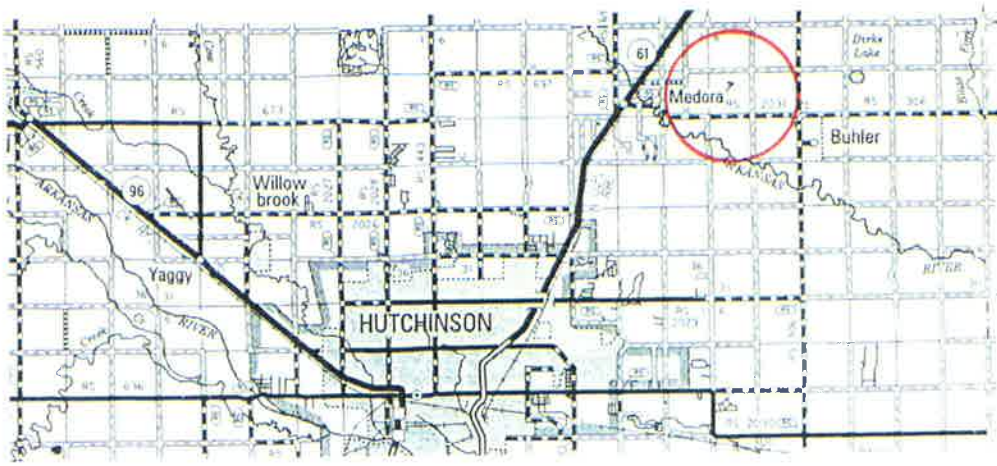
L. D. DRILLING, INC.
 REGIER LEASE
 SW. 1/4, SECTION 7, T22S, R4W
 RENO COUNTY, KANSAS

Directions:

From the intersection of 82nd Avenue and
 W. Street, Buhler, Kansas go 1.0 miles West to
 the SE corner of Section 7. Then go 0.67
 miles West, then go 0.17 miles North to
 location.

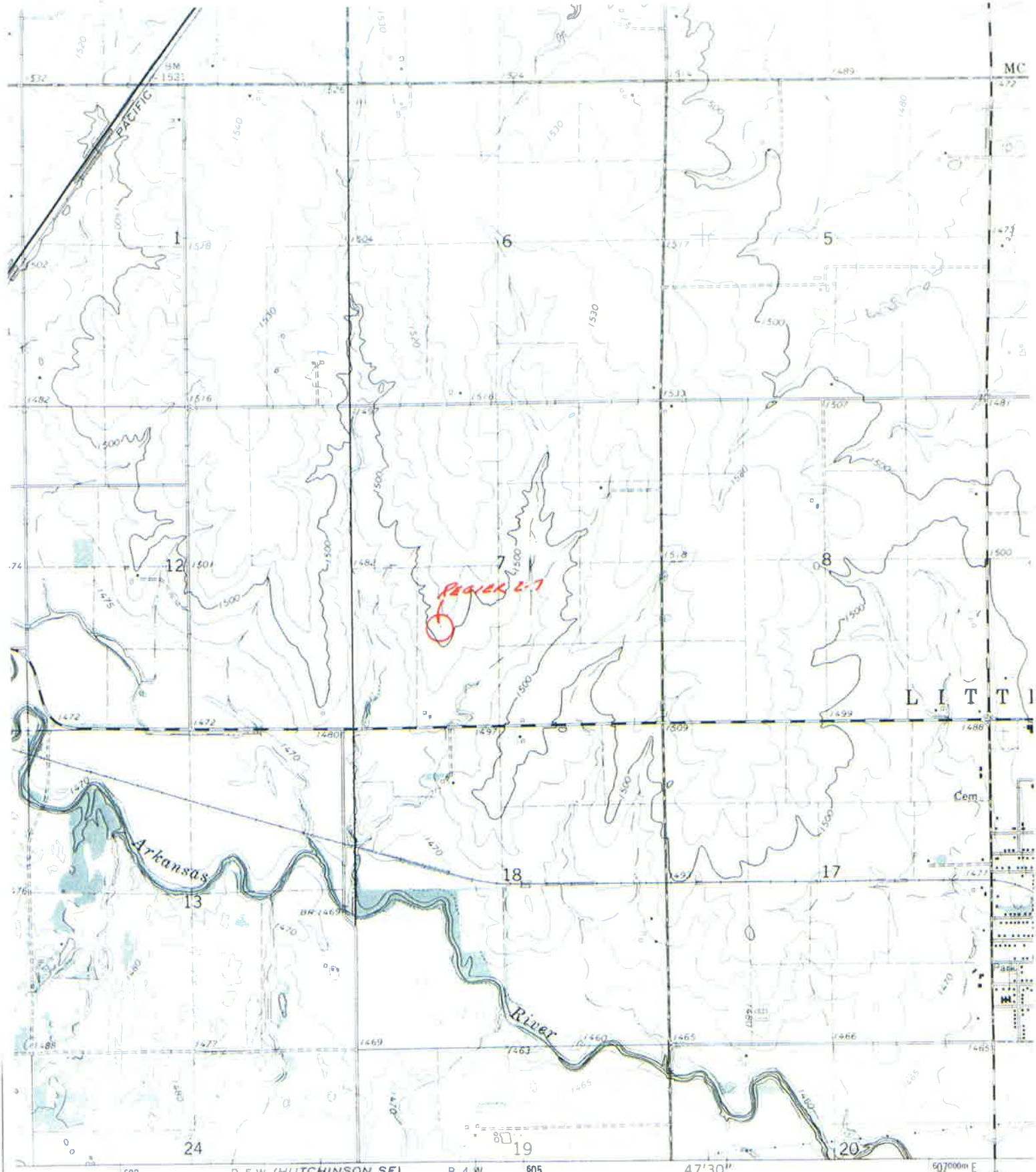


*Ingress and egress to location as shown on this
 draft is for access only and may not be legally
 opened for public use. Contact landowner,
 town and county road department for access.



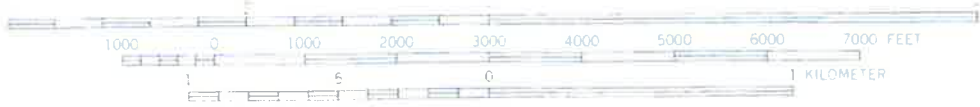
*This is a preliminary site plan. The actual well location will be determined by the contractor. The actual well location will be determined by the contractor. The actual well location will be determined by the contractor.

Date August 11, 2017



R 5 W (HUTCHINSON SE)
6460 III SE

SCALE 1:24,000



CONTOUR INTERVAL 10 FEET
 DOTTED LINES REPRESENT 5 FOOT CONTOURS
 DATUM IS MEAN SEA LEVEL

6 MI.
HAVE