



**TRILOBITE TESTING, INC.**

# DRILL STEM TEST REPORT

Dixon Operating Co LLC

**35-23s-11w Stafford**

8100 E.22nd St N  
Bldg 300 Suite 200  
Wichita Ks 67226  
ATTN: TJ Dixon , Chuck Sch

**Arderly #1-35**

Job Ticket: 59946

**DST#: 4**

Test Start: 2017.06.21 @ 01:24:54

## GENERAL INFORMATION:

Formation: **Viola "C"**

Deviated: No Whipstock: ft (KB)

Time Tool Opened: 03:11:24

Time Test Ended: 08:59:39

Test Type: Conventional Bottom Hole (Reset)

Tester: Leal Cason

Unit No: 74

**Interval: 3775.00 ft (KB) To 3795.00 ft (KB) (TVD)**

Reference Elevations: 1812.00 ft (KB)

Total Depth: 3795.00 ft (KB) (TVD)

1804.00 ft (CF)

Hole Diameter: 7.85 inches Hole Condition: Good

KB to GR/CF: 8.00 ft

**Serial #: 8159**

**Inside**

Press@RunDepth: 22.83 psig @ 3776.00 ft (KB)

Capacity: 8000.00 psig

Start Date: 2017.06.21

End Date:

2017.06.21

Last Calib.:

2017.06.21

Start Time: 01:24:55

End Time:

08:59:39

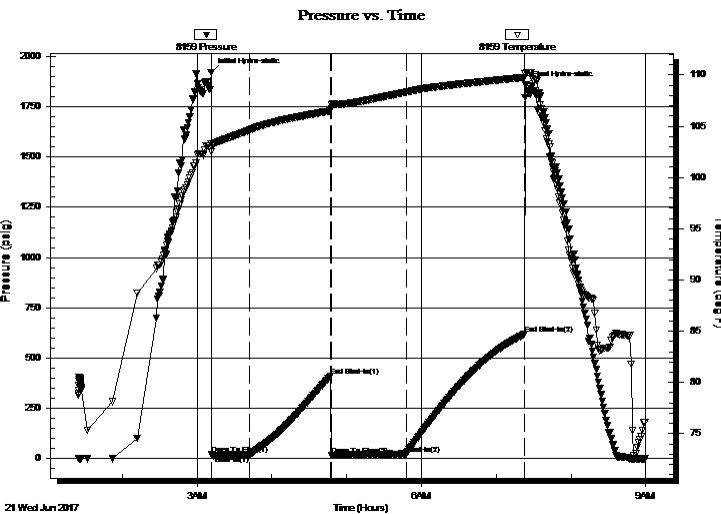
Time On Btm:

2017.06.21 @ 03:11:09

Time Off Btm:

2017.06.21 @ 07:23:24

**TEST COMMENT:** IF: Weak Blow , Built to 2 1/2 inches  
IS: No Blow Back  
FF: Weak Blow , Built to 6 inches  
FS: No Blow Back



## PRESSURE SUMMARY

Time (Min.)	Pressure (psig)	Temp (deg F)	Annotation
0	1921.10	103.29	Initial Hydro-static
1	19.97	102.52	Open To Flow (1)
31	17.51	104.62	Shut-In(1)
96	409.84	106.51	End Shut-In(1)
97	14.37	106.75	Open To Flow (2)
157	22.83	108.32	Shut-In(2)
252	617.58	109.77	End Shut-In(2)
253	1857.83	110.15	Final Hydro-static

## Recovery

Length (ft)	Description	Volume (bbl)
25.00	SGCM 2%G 98%M	0.35

\* Recovery from multiple tests

## Gas Rates

Choke (inches)	Pressure (psig)	Gas Rate (Mcf/d)





**TRILOBITE  
TESTING, INC.**

# DRILL STEM TEST REPORT

**FLUID SUMMARY**

Dixon Operating Co LLC

**35-23s-11w Stafford**

8100 E.22nd St N  
Bldg 300 Suite 200  
Wichita Ks 67226  
ATTN: TJ Dixon , Chuck Sch

**Artery #1-35**

Job Ticket: 59946

**DST#: 4**

Test Start: 2017.06.21 @ 01:24:54

## Mud and Cushion Information

Mud Type: Gel Chem

Cushion Type:

Oil API:

deg API

Mud Weight: 10.00 lb/gal

Cushion Length:

ft

Water Salinity:

ppm

Viscosity: 50.00 sec/qt

Cushion Volume:

bbbl

Water Loss: 10.27 in<sup>3</sup>

Gas Cushion Type:

Resistivity: ohm.m

Gas Cushion Pressure:

psig

Salinity: 6300.00 ppm

Filter Cake: 1.00 inches

## Recovery Information

Recovery Table

Length ft	Description	Volume bbl
25.00	SGCM 2%G 98%M	0.351

Total Length: 25.00 ft      Total Volume: 0.351 bbl

Num Fluid Samples: 0

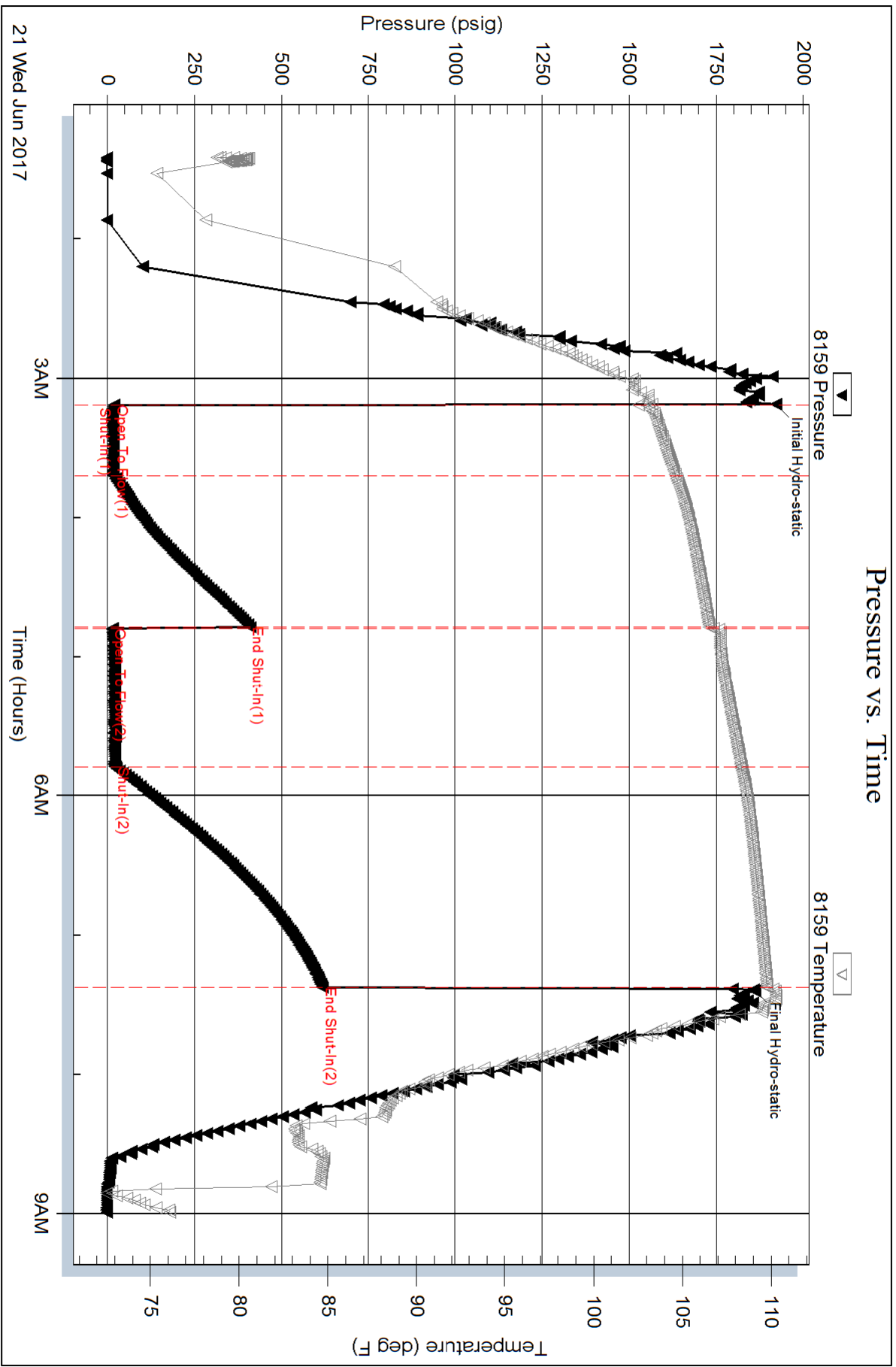
Num Gas Bombs: 0

Serial #:

Laboratory Name:

Laboratory Location:

Recovery Comments:



Serial #: 6806

Outside Dixon Operating Co LLC

Artery #1-35

DST Test Number: 4

