

COMPANY: **DIXON OPERATING CO. LLC**
WELL: **BYER # 1-3**
T 22.5

LOCATION: **2310' FSL 350' FCEL**
SEC: **3** TWP: **23S** R. **12W**
COUNTY: **STAFFORD**
STATE: **KANSAS**

APR # **15-185-13986-00-00**
MUD: **MUDCO / SERRAVALLE MUD, INC.**
LOG: **STAFFORD**
DATE: **11/13/2011**
COURTESY: **STAFFORD**
COSTING RECORD: **5/26/2015**
ELONGATION: **5/26/2015**
TOTAL DEPTH: **3574'**

PRODUCTION:
NO. OF TUBING: **1**
NO. OF PERFORATIONS: **1**
NO. OF PACKERS: **1**
NO. OF GELS: **1**
NO. OF FLOPPERS: **1**
NO. OF STAGNANT: **1**
NO. OF BUBBLES: **1**
NO. OF SAND: **1**
NO. OF OTHER: **1**

FORMATION	SAMPLE	LOG TOP	LOG BOTTOM	SUB-SEA DRAIN	STRUCTURAL POSITION
ANHYDRITE - TOP	612	612	+124	+11	+8
ANHYDRITE - BASE	631	631	+124	+11	+8
HIEBERNER	3151	3151	3149	-447	+9
BROWN LIME	3288	3288	3287	-447	+8
LANSING	3315	3315	3314	-447	+9
STARK	3507	3507	3506	-166	+8
BKC	3559	3559	3557	-117	+10
VIOLA	3590	3590	3588	-176	+6
SIMPSON SH.	3704	3704	3702	-182	+6
ARBUCKLE	3797	3797	3794	-194	+16
TOTAL DEPTH	3880	3880	3874	-234	+12

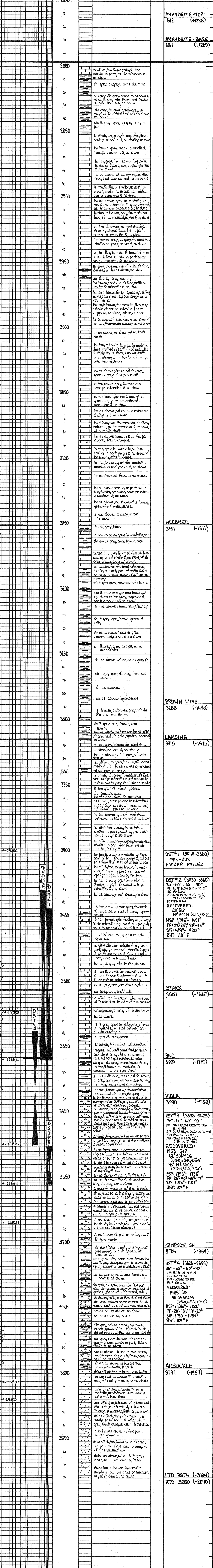
REFERENCE WELL FOR STRUCTURE: **MUDBIN DRILLING CO. - RANK # 2-2**
1500' ENCL. 380' W/L, SEC 2, T23S, R12W, SHERROD CITY, KS.

NO.	Interval	HT/Time	SPR/Time	HT/Time	HT-FH/Time	REMARKS
1	3444-3560	27'-29"	419'	25'-35"	1746'	MIS-RUN PACKER FAILED
2	3560-3625	27'-30"	419'	25'-35"	1746'	120' GIP 60 SOCM
3	3625-3880	25'-40"	1153'	145'-17"	1933'	1933' GIP 92' 50' MCG 93' M 50CG

NO	SIZE	MAK	TYPE	DEPTH OUT	FEET	HOURS	REMARKS
1	1 7/8"	SMITH	3 1/2"	361'	2	16 1/2	PIPE STAGN. @ 3680' - 0.8% SLOTT DEPART @ 3410' - 1 1/2" @ 3680' - 1"
2	1 7/8"	JT	4 1/2"	3660'	3	16 1/2	
3	1 7/8"	JT	4 1/2"	3690'	3	16 1/2	

DATE	TIME	ADMIT	REL. W. I.	NO.	HT.	SPR.	HT-FH.	CH.
6-23	14:27	14:27	2406	24	21	14	7 1/2	14"
6-24	15:07	15:07	2406	5	6	21	11	14"
6-25	15:07	15:07	2406	6	6	21	11	14"
6-26	15:07	15:07	2406	6	6	21	11	14"
6-27	14:16	14:16	2406	9	9	21	11	14"
6-28	14:16	14:16	2406	9	9	21	11	14"
6-29	14:16	14:16	2406	9	9	21	11	14"
6-30	14:16	14:16	2406	9	9	21	11	14"
6-30	14:16	14:16	2406	9	9	21	11	14"

LOG 7710



DRILLING TIME IN MINUTES PER FOOT
Rate of Penetration Decreases

DEPTH

LITHOLOGY

SAMPLE DESCRIPTIONS

OIL SHOWS

REMARKS

NO	Interval	HT/Time	SPR/Time	HT/Time	HT-FH/Time	REMARKS
1	3444-3560	27'-29"	419'	25'-35"	1746'	MIS-RUN PACKER FAILED
2	3560-3625	27'-30"	419'	25'-35"	1746'	120' GIP 60 SOCM
3	3625-3880	25'-40"	1153'	145'-17"	1933'	1933' GIP 92' 50' MCG 93' M 50CG

NO	SIZE	MAK	TYPE	DEPTH OUT	FEET	HOURS	REMARKS
1	1 7/8"	SMITH	3 1/2"	361'	2	16 1/2	PIPE STAGN. @ 3680' - 0.8% SLOTT DEPART @ 3410' - 1 1/2" @ 3680' - 1"
2	1 7/8"	JT	4 1/2"	3660'	3	16 1/2	
3	1 7/8"	JT	4 1/2"	3690'	3	16 1/2	

DATE	TIME	ADMIT	REL. W. I.	NO.	HT.	SPR.	HT-FH.	CH.
6-23	14:27	14:27	2406	24	21	14	7 1/2	14"
6-24	15:07	15:07	2406	5	6	21	11	14"
6-25	15:07	15:07	2406	6	6	21	11	14"
6-26	15:07	15:07	2406	6	6	21	11	14"
6-27	14:16	14:16	2406	9	9	21	11	14"
6-28	14:16	14:16	2406	9	9	21	11	14"
6-29	14:16	14:16	2406	9	9	21	11	14"
6-30	14:16	14:16	2406	9	9	21	11	14"
6-30	14:16	14:16	2406	9	9	21	11	14"

LOG 7710

DRILLING TIME IN MINUTES PER FOOT
Rate of Penetration Decreases

DEPTH

LITHOLOGY

SAMPLE DESCRIPTIONS

OIL SHOWS

REMARKS

NO	Interval	HT/Time	SPR/Time	HT/Time	HT-FH/Time	REMARKS
1	3444-3560	27'-29"	419'	25'-35"	1746'	MIS-RUN PACKER FAILED
2	3560-3625	27'-30"	419'	25'-35"	1746'	120' GIP 60 SOCM
3	3625-3880	25'-40"	1153'	145'-17"	1933'	1933' GIP 92' 50' MCG 93' M 50CG

NO	SIZE	MAK	TYPE	DEPTH OUT	FEET	HOURS	REMARKS
1	1 7/8"	SMITH	3 1/2"	361'	2	16 1/2	PIPE STAGN. @ 3680' - 0.8% SLOTT DEPART @ 3410' - 1 1/2" @ 3680' - 1"
2	1 7/8"	JT	4 1/2"	3660'	3	16 1/2	
3	1 7/8"	JT	4 1/2"	3690'	3	16 1/2	

DATE	TIME	ADMIT	REL. W. I.	NO.	HT.	SPR.	HT-FH.	CH.
6-23	14:27	14:27	2406	24	21	14	7 1/2	14"
6-24	15:07	15:07	2406	5	6	21	11	14"
6-25	15:07	15:07	2406	6	6	21	11	14"
6-26	15:07	15:07	2406	6	6	21	11	14"
6-27	14:16	14:16	2406	9	9	21	11	14"
6-28	14:16	14:16	2406	9	9	21	11	14"
6-29	14:16	14:16	2406	9	9	21	11	14"
6-30	14:16	14:16	2406	9	9	21	11	14"
6-30	14:16	14:16	2406	9	9	21	11	14"

LOG 7710

DRILLING TIME IN MINUTES PER FOOT
Rate of Penetration Decreases

DEPTH

LITHOLOGY

SAMPLE DESCRIPTIONS

OIL SHOWS

REMARKS

NO	Interval	HT/Time	SPR/Time	HT/Time	HT-FH/Time	REMARKS
1	3444-3560	27'-29"	419'	25'-35"	1746'	MIS-RUN PACKER FAILED
2	3560-3625	27'-30"	419'	25'-35"	1746'	120' GIP 60 SOCM
3	3625-3880	25'-40"	1153'	145'-17"	1933'	1933' GIP 92' 50' MCG 93' M 50CG

NO	SIZE	MAK	TYPE	DEPTH OUT	FEET	HOURS	REMARKS
1	1 7/8"	SMITH	3 1/2"	361'	2	16 1/2	PIPE STAGN. @ 3680' - 0.8% SLOTT DEPART @ 3410' - 1 1/2" @ 3680' - 1"
2	1 7/8"	JT	4 1/2"	3660'	3	16 1/2	
3	1 7/8"	JT	4 1/2"	3690'	3	16 1/2	

DATE	TIME	ADMIT	REL. W. I.	NO.	HT.	SPR.	HT-FH.	CH.
6-23	14:27	14:27	2406	24	21	14	7 1/2	14"
6-24	15:07	15:07	2406	5	6	21	11	14"
6-25	15:07	15:07	2406	6	6	21	11	14"
6-26	15:07	15:07	2406	6	6	21	11	14"
6-27	14:16	14:16	2406	9	9	21	11	14"
6-28	14:16	14:16	2406	9	9	21	11	14"
6-29	14:16	14:16	2406	9	9	21	11	14"
6-30	14:16	14:16	2406	9	9	21	11	14"
6-30	14:16	14:16	2406	9	9	21	11	14"

LOG 7710

DRILLING TIME IN MINUTES PER FOOT
Rate of Penetration Decreases

DEPTH

LITHOLOGY

SAMPLE DESCRIPTIONS

OIL SHOWS

REMARKS

NO	Interval	HT/Time	SPR/Time	HT/Time	HT-FH/Time	REMARKS
1	3444-3560	27'-29"	419'	25'-35"	1746'	MIS-RUN PACKER FAILED
2	3560-3625	27'-30"	419'	25'-35"	1746'	120' GIP 60 SOCM
3	3625-3880	25'-40"	1153'	145'-17"	1933'	1933' GIP 92' 50' MCG 93' M 50CG

NO	SIZE	MAK	TYPE	DEPTH OUT	FEET	HOURS	REMARKS
1	1 7/8"	SMITH	3 1/2"	361'	2	16 1/2	PIPE STAGN. @ 3680' - 0.8% SLOTT DEPART @ 3410' - 1 1/2" @ 3680' - 1"
2	1 7/8"	JT	4 1/2"	3660'	3	16 1/2	
3	1 7/8"	JT	4 1/2"	3690'	3	16 1/2	

DATE	TIME	ADMIT	REL. W. I.	NO.	HT.	SPR.	HT-FH.	CH.
6-23	14:27	14:27	2406	24	21	14	7 1/2	14"
6-24	15:07	15:07	2406	5	6	21	11	14"
6-25	15:07	15:07	2406	6	6	21	11	14"
6-26	15:07	15:07	2406	6	6	21	11	14"
6-27	14:16	14:16	2406	9	9	21	11	14"
6-28	14:16	14:16	2406	9	9	21	11	14"
6-29	14:16	14:16	2406	9	9	21	11	14"
6-30	14:16	14:16	2406	9	9	21	11	14"
6-30	14:16	14:16	2406	9	9	21	11	14"

LOG 7710

DRILLING TIME IN MINUTES PER FOOT
Rate of Penetration Decreases

DEPTH

LITHOLOGY

SAMPLE DESCRIPTIONS

OIL SHOWS

REMARKS

NO	Interval	HT/Time	SPR/Time	HT/Time	HT-FH/Time	REMARKS
1	3444-3560	27'-29"	419'	25'-35"	1746'	MIS-RUN PACKER FAILED
2	3560-3625	27'-30"	419'	25'-35"	1746'	120' GIP 60 SOCM
3	3625-3880	25'-40"	1153'	145'-17"	1933'	1933' GIP 92' 50' MCG 93' M 50CG

NO	SIZE	MAK	TYPE	DEPTH OUT	FEET	HOURS	REMARKS
1	1 7/8"	SMITH	3 1/2"	361'	2	16 1/2	PIPE STAGN. @ 3680' - 0.8% SLOTT DEPART @ 3410' - 1 1/2" @ 3680' - 1"
2	1 7/8"	JT	4 1/2"	3660'	3	16 1/2	
3	1 7/8"	JT	4 1/2"	3690'	3	16 1/2	

DATE	TIME	ADMIT	REL. W. I.	NO.	HT.	SPR.	HT-FH.	CH.
6-23	14:27	14:27	2406	24	21	14	7 1/2	14"
6-24	15:07	15:07	2406	5	6	21	11	14"
6-25	15:07	15:07	2406	6	6	21		