



**TRILOBITE
TESTING, INC.**

DRILL STEM TEST REPORT

Shakespeare Oil Co.

13/24/23

202 W Main St.
Salem, IL 62881

Stoecker 1-13

ATTN: Toby Eck

Job Ticket: 59468

DST#: 1

Test Start: 2017.08.04 @ 08:15:02

GENERAL INFORMATION:

Formation: **Miss.**

Deviated: No Whipstock: 2263.00 ft (KB)

Time Tool Opened: 11:05:49

Time Test Ended: 15:27:50

Test Type: Conventional Bottom Hole (Initial)

Tester: Chris Hagman

Unit No: 75

Interval: 4581.00 ft (KB) To 4595.00 ft (KB) (TVD)

Reference Elevations: 2274.00 ft (KB)

Total Depth: 4595.00 ft (KB) (TVD)

2263.00 ft (CF)

Hole Diameter: 7.88 inches Hole Condition: Good

KB to GR/CF: 11.00 ft

Serial #: 8289

Inside

Press@RunDepth: 40.07 psig @ 4592.00 ft (KB)

Capacity: 8000.00 psig

Start Date: 2017.08.04

End Date:

2017.08.04

Last Calib.: 1899.12.30

Start Time: 08:15:02

End Time:

15:27:49

Time On Btm: 2017.08.04 @ 11:05:19

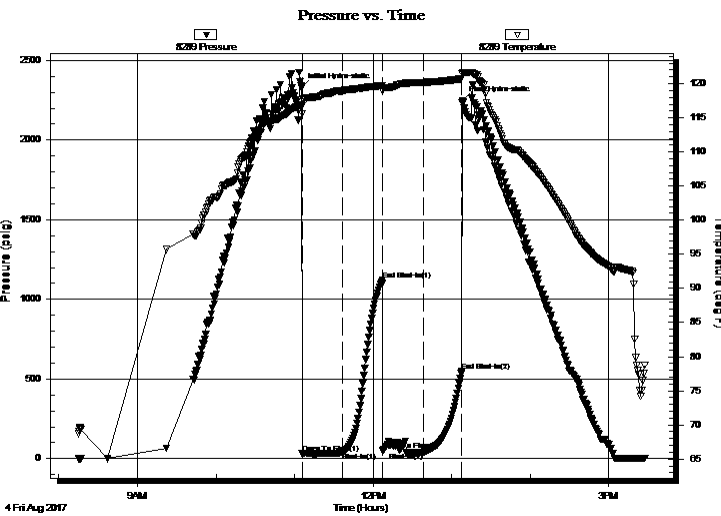
Time Off Btm: 2017.08.04 @ 13:08:10

TEST COMMENT: IF: 1 inch in 10 min., died to weak surface blow

IS: No blow back

FF: No blow

FS: No blow back



PRESSURE SUMMARY

Time (Min.)	Pressure (psig)	Temp (deg F)	Annotation
0	2325.48	116.71	Initial Hydro-static
1	31.32	116.82	Open To Flow (1)
32	42.45	118.92	Shut-In(1)
62	1122.72	119.72	End Shut-In(1)
62	49.80	119.02	Open To Flow (2)
94	40.07	120.19	Shut-In(2)
123	546.68	120.71	End Shut-In(2)
123	2247.70	121.46	Final Hydro-static

Recovery

Length (ft)	Description	Volume (bbl)
10.00	oil spotted mud 100%M	0.05

Gas Rates

Choke (inches)	Pressure (psig)	Gas Rate (MMcf/d)



**TRILOBITE
TESTING, INC.**

DRILL STEM TEST REPORT

FLUID SUMMARY

Shakespeare Oil Co.

13/24/23

202 W Main St.
Salem, IL 62881

Stoecker 1-13

Job Ticket: 59468

DST#: 1

ATTN: Toby Eck

Test Start: 2017.08.04 @ 08:15:02

Mud and Cushion Information

Mud Type: Gel Chem

Cushion Type:

Oil API:

deg API

Mud Weight: 9.00 lb/gal

Cushion Length:

ft

Water Salinity:

3900 ppm

Viscosity: 53.00 sec/qt

Cushion Volume:

bbbl

Water Loss: 11.18 in³

Gas Cushion Type:

Resistivity: ohm.m

Gas Cushion Pressure:

psig

Salinity: 8100.00 ppm

Filter Cake: inches

Recovery Information

Recovery Table

Length ft	Description	Volume bbl
10.00	oil spotted mud 100%M	0.049

Total Length: 10.00 ft Total Volume: 0.049 bbl

Num Fluid Samples: 0

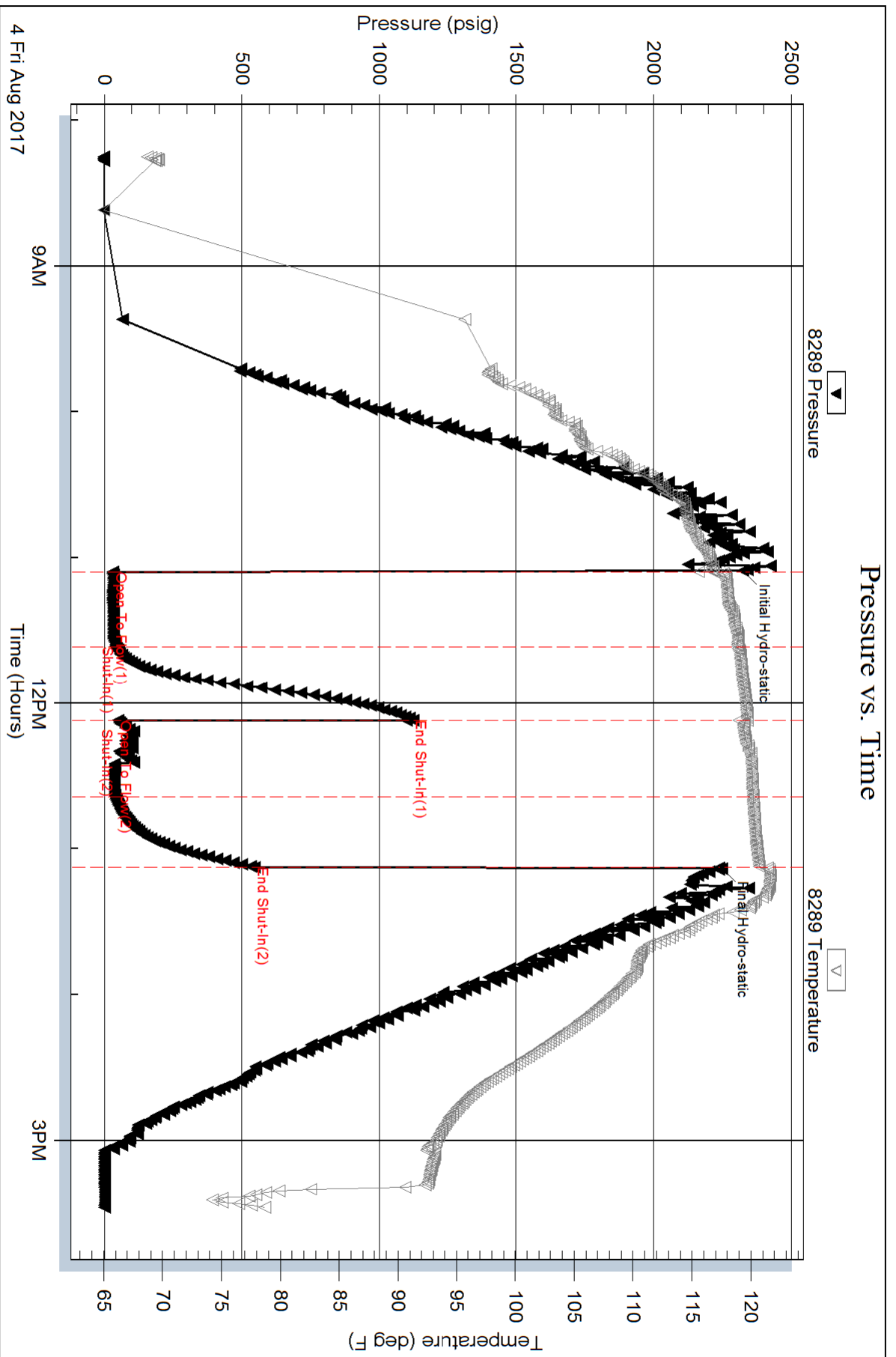
Num Gas Bombs: 0

Serial #:

Laboratory Name:

Laboratory Location:

Recovery Comments: RW=1.295@85F=3900ppm



Serial #: 6672

Outside Shakespeare Oil Co.

Sloecker 1-13

DST Test Number: 1

