



Depend on US

Post Job Report

Merit Energy

Longbow 7-10

5/3/2017

8.625" Surface Casing

Grant County, KS





Table of Contents:

1.0 Executive Summary.....	3
2.0 Job Summary.....	4
2.1 Job Event Log.....	4
2.2 Job Chart.....	5
3.0 Water Testing.....	6
4.0 Customer Satisfaction Survey.....	7
5.0 State Cementing Report.....	8



1.0 Executive Summary

BJ Services would like to thank you for the award of the provision of cementing products and services on the well Longbow 7-10.

A pre-job meeting was held to discuss job details, review the safety hazards, potential environmental impact and established emergency procedures.

BJ started the job testing lines to 2000 psi. After a successful test we began the job by pumping 10 bbl Fresh Water. We then mixed and pumped the following cements:

Lead:

161.23 bbl	355 Sacks of 12.1 ppg
Class A Slurry -	2.55 Yield

- 2.0% Sodium Metasilicate
- 2.0% Gypsum
- 4.0% Gel
- 2.0% Sodium Chloride
- 3.0 % Calcium Chloride
- 0.25 lb Cellophane Flake

Tail:

39.58 bbl	175 Sacks of 15.2 ppg
Class A Slurry -	1.27 Yield

- 2.0 % Calcium Chloride
- 0.25 lb Cellophane Flake

The top plug was then released and displaced with 90 Bbls of Fresh Water. The plug bumped and was pressured to 850 psi. Upon release the floats held. 50 bbl cement returned to surface.

All real-time data can be view in the Job Summary section.

BJ Services remains committed to provide operational excellence and superior product performance. All comments and suggestions are greatly appreciated and help us to continue to provide this level of service.

Again, we want to thank you for the opportunity to perform these and your future cementing & acidizing services.



Cement Job Summary

Job Number:	Lib1705031144	Job Purpose	01 Surface		
Customer:	MERIT ENERGY COMPANY		Date:	5/3/2017	
Well Name:	Longbow	Number:	7-10	API/UWI:	
County:	Grant	City:	Ulysses	State:	KS
Cust. Rep:		Phone:		Rig Phone:	
Legal Desc:		Rig Name:	Duke#9		
Distance	50 miles (one way)		Supervisor		

Employees:	Emp. ID:	Employees:	Emp. ID:
Erik Chavez	#N/A	Jose Calderon	#N/A
Jaime Torres	#N/A	Gerardo Burciaga	#N/A

Equipment:	
549-4 / 550-5	774-4 / 1066-5
	994-4 / 467-5

Well Information						
Open Hole Section						
Description:	Size (in):	Excess	Top MD (ft)	Btm MD (ft)		
OPEN HOLE	12 1/4	0%	965	1,465	TAIL CEMENT	
OPEN HOLE	12 1/4	130%	0	965	LEAD CEMENT	
Tubulars						
Description:	Size (in):	Wgt. (lb/ft)	ID (in)	Grade:	Top MD (ft)	Btm MD (ft)
PREVIOUS CASING				J-55		
TOTAL CASING	8 5/8	24	8.097	J-55	0	1,455
SHOE	8 5/8	24	8.097	J-55	1,413	1,455

Materials - Pumping Schedule						
STAGE #1						
Fluid Name	Description	Rqstd Qty	Density	Yield	Water (gal/sk)	
Spacer 1	Fresh Water	10	8.33	n/a	n/a	
Fluid Name	Description	Rqstd Qty	Density	Yield	Water (gal/sk)	
Lead 1	ALLIED MULTI-DENSITY CEMENT - CLASS A	355	12.10	2.55	14.86	
Addl. Additive	Description	Conc. (lb/sk)	Determined by	Load Volume	UOM	
CA-100	CALCIUM CHLORIDE, PELLETS OR FLAKE	2.82	% BWOC	1001.1	lbm	
CLC-CPF	CELLOPHANE FLAKES	0.5	lb/sk	177.5	lbm	
Fluid Name	Description	Rqstd Qty	Density	Yield	Water (gal/sk)	
Tail 1	CLASS A COMMON	175	15.20	1.27	5.74	
Addl. Additive	Description	Conc. (lb/sk)	Determined by	Load Volume	UOM	
CA-100	CALCIUM CHLORIDE, PELLETS OR FLAKE	1.88	% BWOC	329.0	lbm	
CLC-CPF	CELLOPHANE FLAKES	0.5	lb/sk	87.5	lbm	
Fluid Name	Description	Rqstd Qty	Density	Yield	Water (gal/sk)	
Acid	MUD	0	9.00	n/a	n/a	
Fluid Name	Description	Rqstd Qty	Density	Yield	Water (gal/sk)	
Disp. 1	Displacement	89.96640175	8.33	n/a	n/a	
Fluid Name	Description	Rqstd Qty	Density	Yield	Water (gal/sk)	

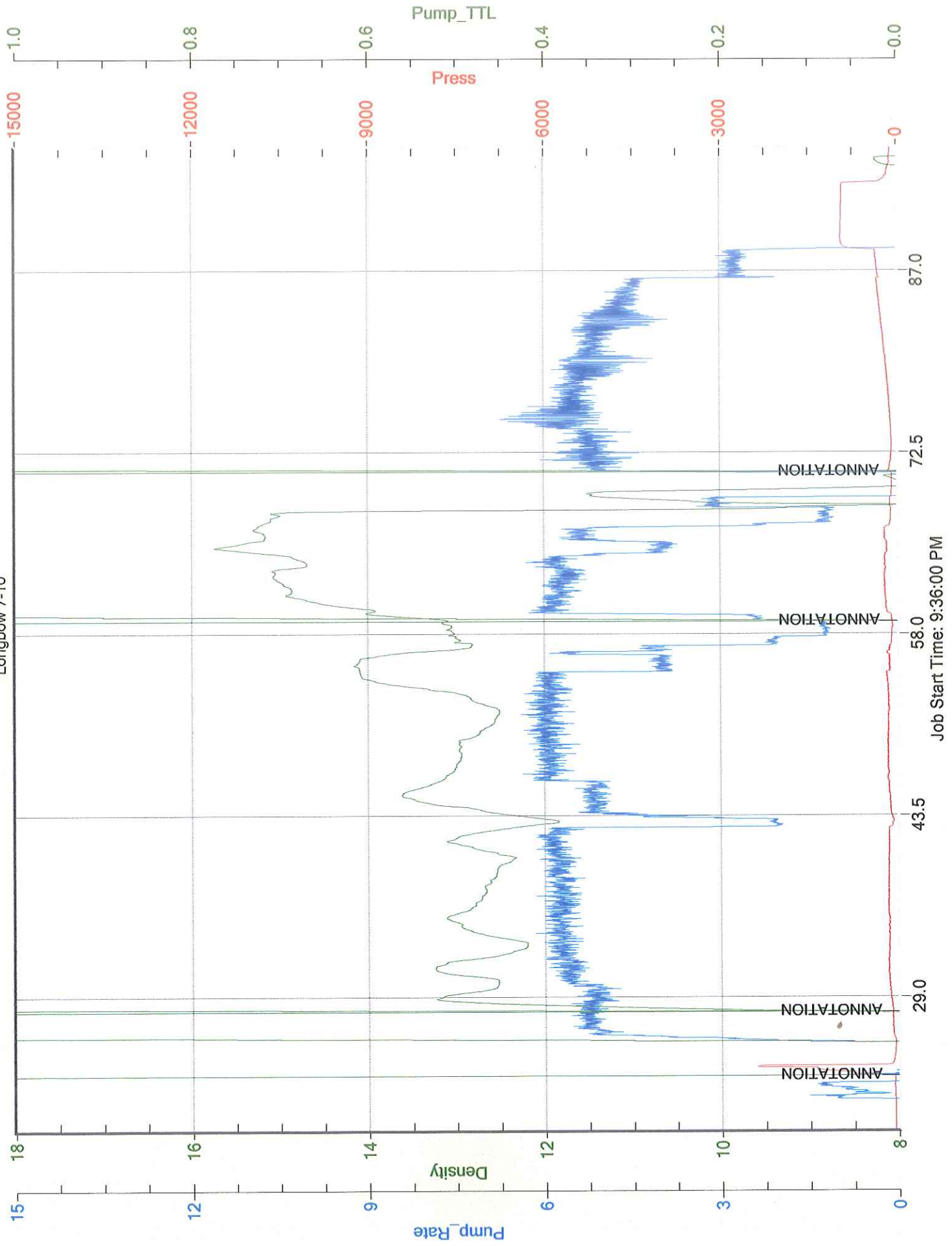
Job Number:	Lib1705031144	Job Purpose	01 Surface		
Customer:	MERIT ENERGY COMPANY		Date:	5/3/2017	
Well Name:	Longbow	Number:	7-10	API/UWI:	
County:	Grant	City:	Ulysses	State:	KS
Cust. Rep:		Phone:		Rig Phone:	0



Cement Job Summary

Distance		50 miles (one way)			Supervisor	Erik Chavez
TIME	PRESSURE - (PSI)		FLUID PUMPED DATA		COMMENTS	
AM/PM	CASING	ANNULUS	VOLUME	RATE (BPM)		
7:00					Arrive on Location	
					Pre-Rig up Safety Meeting	
					Rig up Equipment	
					Wait on Customer	
10:28					Operation Safety Meeting	
10:35					Prime Lines	
10:39					Test Lines	
10:41	90		10	3	Spacer 1 / H2O	
					LCMT 355 sks @ 12.1 ppg	
10:47	150		20	5.7	Pressure / Volume / Rate	
10:51	160		40	5.7	Pressure / Volume / Rate	
10:55	150		60	6.0	Pressure / Volume / Rate	
11:05	150		100	6.0	Pressure / Volume / Rate	
11:08	170		140	5.9	Pressure / Volume / Rate	
11:12	150		160	6.0	Pressure / Volume / Rate	
					TCMT 175 sks @ 15.2 ppg	
11:15	200		10	5.6	Pressure / Volume / Rate	
11:18	200		20	5.8	Pressure / Volume / Rate	
11:19	170		30	4.2	Pressure / Volume / Rate	
11:21	150		40	4.2	Pressure / Volume / Rate	
11:25					Shutdown / Drop Plug / Wash Equipment	
					Displacement	
11:31	110		30	5.8	Pressure / Volume / Rate	
11:34	190		45	5.8	Pressure / Volume / Rate	
11:36	230		60	4.6	Pressure / Volume / Rate	
11:40	260		75	4.3	Pressure / Volume / Rate	
11:41	350		80	2.7	Slow Rate	
11:44	850		90	2	Bump Plug	
11:49					Release Pressure / Check Floats	
12:00					After Action Review	
12:20					Pre-Rig down Safety Meeting	
12:30					Rig-Down Equipment	
13:00					Leave Location	
			50		Cement Back to Surface	

Merit Energy Longbow 7-10





Customer: MERIT ENERGY COMPANY
Date: Wednesday, May 03, 2017
Well Name: Longbow # 7-10
Well Location: Ulysses
Supervisor: Erik Chavez

Equipment Operators: _____

Performance	Customer	
Was the appearance of the personnel and equipment satisfactory?	<input checked="" type="radio"/> Yes	<input type="radio"/> No
Was the job performed in a professional manner?	<input type="radio"/> Yes	<input type="radio"/> No
Were the calculations prepared and explained properly?	<input type="radio"/> Yes	<input type="radio"/> No
Were the correct services dispatched to the job site?	<input type="radio"/> Yes	<input type="radio"/> No
Were the services performed as requested?	<input type="radio"/> Yes	<input type="radio"/> No
Did the job site environment remain unchanged?	<input type="radio"/> Yes	<input type="radio"/> No
Did the equipment perform in the manner expected?	<input type="radio"/> Yes	<input type="radio"/> No
Did the materials meet your expectations?	<input type="radio"/> Yes	<input type="radio"/> No
Was the crew prepared for the job?	<input type="radio"/> Yes	<input type="radio"/> No
Was the crew prompt in the rig-up and actual job?	<input type="radio"/> Yes	<input type="radio"/> No
Were reasonable recommendations given, as requested?	<input type="radio"/> Yes	<input type="radio"/> No
Did the crew perform safely?	<input type="radio"/> Yes	<input type="radio"/> No
Was the job performed to your satisfaction?	<input type="radio"/> Yes	<input type="radio"/> No

Customer Signature:  Date: 5-3-17

Additional Comments:
Good job!



CEMENT MIXING WATER GUIDELINES

Company Name:

MERIT ENERGY COMPANY

Lease Name:

Longbow # 7-10

County

State

Grant

KS

Water Source:

TANK

Submitted By:

Date:

Erik Chavez

5/3/2017

pH Level

7

Must be less than 8.5

Sulfates

400

Must be less than 1,000 PPM

Chlorides

0

Must be less than 3,000 PPM

Temperature

64

COMMENTS

Thank You

Customer Signature