



*Depend on US*

# Post Job Report

## **Merit Energy**

Longbow 7-10

5/7/2017

5.5" 2-Stage Production Casing

Grant County, KS





## Table of Contents:

1.0 Executive Summary.....	3
2.0 Job Summary.....	4
2.1 Job Event Log.....	4
2.2 Job Chart.....	5
3.0 Water Testing.....	6
4.0 Customer Satisfaction Survey.....	7



## 1.0 Executive Summary

BJ Services would like to thank you for the award of the provision of cementing products and services on the well Longbow 7-10 intermediate casing.

A pre-job meeting was held to discuss job details, review the safety hazards, potential environmental impact and established emergency procedures.

BJ started the job testing lines to 2500 psi. After a successful test we began the job by plugging the rat hole and mouse hole with 50 sacks and then began pumping 12 bbls of HiVis Sweep spacer. We then mixed and pumped the following cements:

### 1<sup>st</sup> Stage:

40.64 bbl	140 Sacks of 13.6 ppg
50/50:Class H Slurry -	1.63 Yield
10.0% Salt	
5.0% Gypsum	
2.0% Gel	
0.5% CFL-210	
0.2% CD-100	
5.0 lb Kol-Seal	
0.25 lb Cellophane Flake	

### 2<sup>nd</sup> Stage:

66.68 bbl	195 Sacks of 13.6 ppg
Class A Slurry -	1.92 Yield
10.0% Salt	
6.0% Gypsum	
2.0% Gel	
0.5% CFL-210	
5.0 lb Kol-Seal	
0.25 lb Cellophane Flake	

The first stage was displaced with 126 bbl. The plug bumped and was pressured to 1060 psi. Upon release the floats held. The opening tool was dropped, and BJ waited 30 minutes before opening the tool. The second stage was displaced with 106 bbl.

All real-time data can be view in the Job Summary section.

BJ Services remains committed to provide operational excellence and superior product performance. All comments and suggestions are greatly appreciated and help us to continue to provide this level of service.

Again, we want to thank you for the opportunity to perform these and your future cementing & acidizing service needs.



## Cement Job Summary

Job Number: LIB105070600/1180		Job Purpose: 02 Production/Long String	
Customer:	MERIT ENERGY COMPANY		Date: 5/7/2017
Well Name: Longbow	Number: 7-10		API/UWI:
County: Grant County	City: Ulysses, Kansas		State: KS
Cust. Rep:	Phone:	Rig Phone:	
Legal Desc:	Rig Name: Duke Drilling#9		
Distance: 50 miles (one way)	Supervisor: Victor Corona-Marta		

Employees:	Emp. ID:	Employees:	Emp. ID:
Victor Corona-Marta		Jose Calderon	
James Pippen		Ramon Escarcega	
Victor Garcia			
Equipment:			
903-4/501-5			
994-4/467-5			

Well Information						
Open Hole Section						
Description:	Size (in):	Excess	Top MD (ft)	Btm MD (ft)		
OPEN HOLE	7 7/8	30%	5929	5,950		
OPEN HOLE	7 7/8			5,929		
OPEN HOLE	7 7/8					
OPEN HOLE	7 7/8					
Tubulars						
Description:	Size (in):	Wgt. (lb/ft)	ID (in)	Grade:	Top MD (ft)	Btm MD (ft)
PREVIOUS CASING	8 5/8	24	8.097	J-55	0	1,480
TOTAL CASING	5 1/2	17	4.892	J55	0	5,950
STAGE TOOL	5 1/2	17	4.892	J55		5,019
SHOE	5 1/2	17	4.892	J55	5,908	5,950

Materials - Pumping Schedule						
STAGE #1						
Fluid Name	Description	Rqstd Qty	Density	Yield	Water (gal/sk)	
Spacer 1	HIVIS SWEEP	20	8.40	n/a	n/a	
Fluid Name	Description	Rqstd Qty	Density	Yield	Water (gal/sk)	
Tail 1	ALLIED 50/50 POZ BLEND - CLASS H	140	13.60	1.63	7.46	
Addl. Additive	Description	Conc. (lb/sk)	Determined by	Load Volume	UOM	
CFL-210	FLUID LOSS ADDITIVE - LOW TEMP	0.42	% BWOC	58.8	lbm	
CLC-KOL	KOL-SEAL	5	lb/sk	700.0	lbm	
CLC-CPF	CELLOPHANE FLAKES	0.25	lb/sk	35.0	lbm	
CA-500	GYP SUM	4.2	% BWOC	588.0	lbm	
CA-200	SODIUM CHLORIDE	6.21418	% BWOW	870.0	lbm	
CGEL	GEL - BENTONITE	1.68	% BWOC	235.2	lbm	
CD-100	CEMENT DISPERSANT	0.168	% BWOC	23.5	lbm	
Fluid Name	Description	Rqstd Qty	Density	Yield	Water (gal/sk)	
Disp. 3	Displacement	137.3385432	0.00	n/a	n/a	
STAGE #2						
Fluid Name	Description	Rqstd Qty	Density	Yield	Water (gal/sk)	
Stg 2 Spacer 1	HIVIS SWEEP	12	8.40	n/a	n/a	
Fluid Name	Description	Rqstd Qty	Density	Yield	Water (gal/sk)	
Stg 2 Tail 1	ALLIED SPECIAL BLEND CEMENT - CLASS A	245	13.60	1.92	9.56	

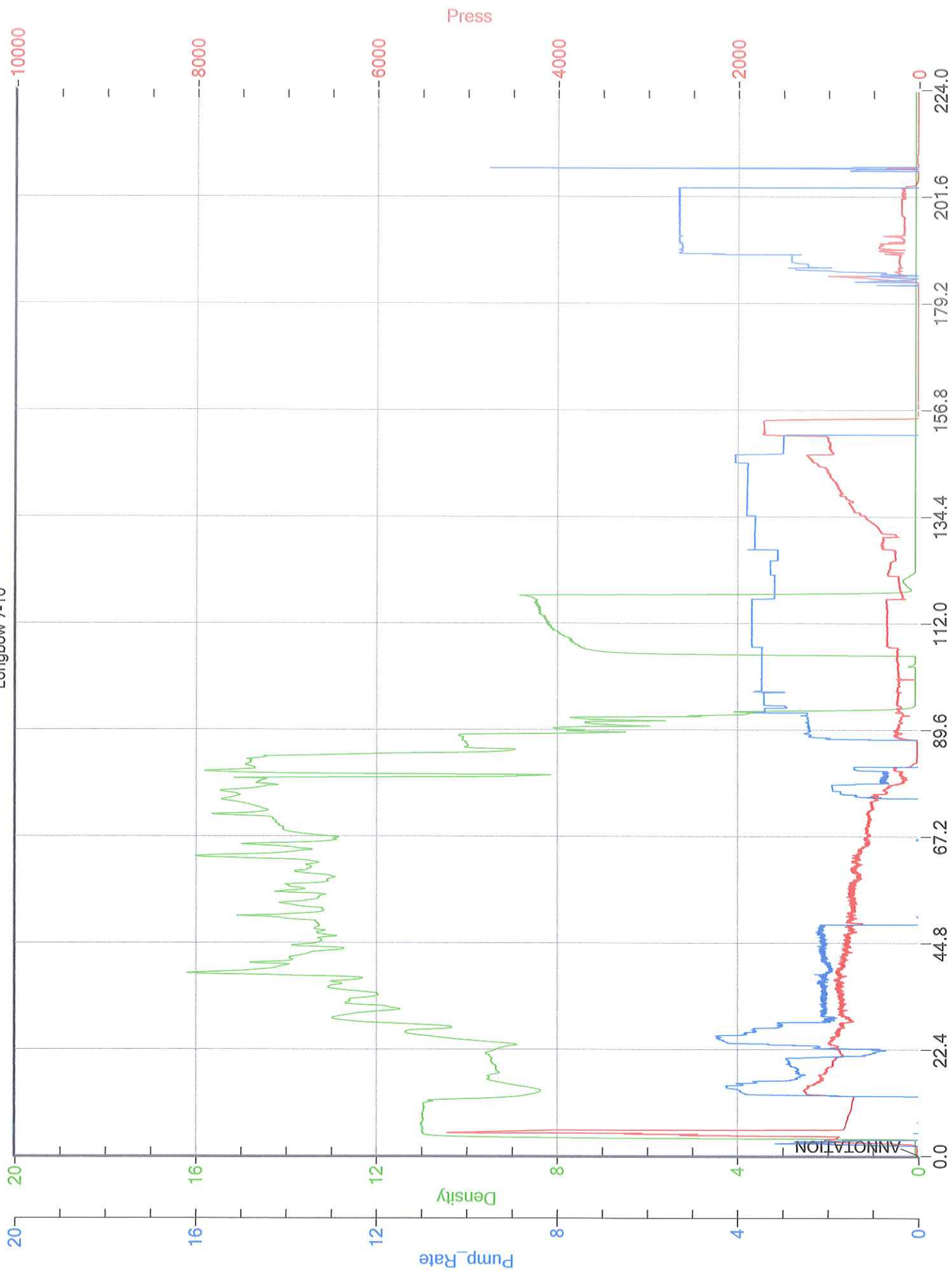


### Cement Job Summary

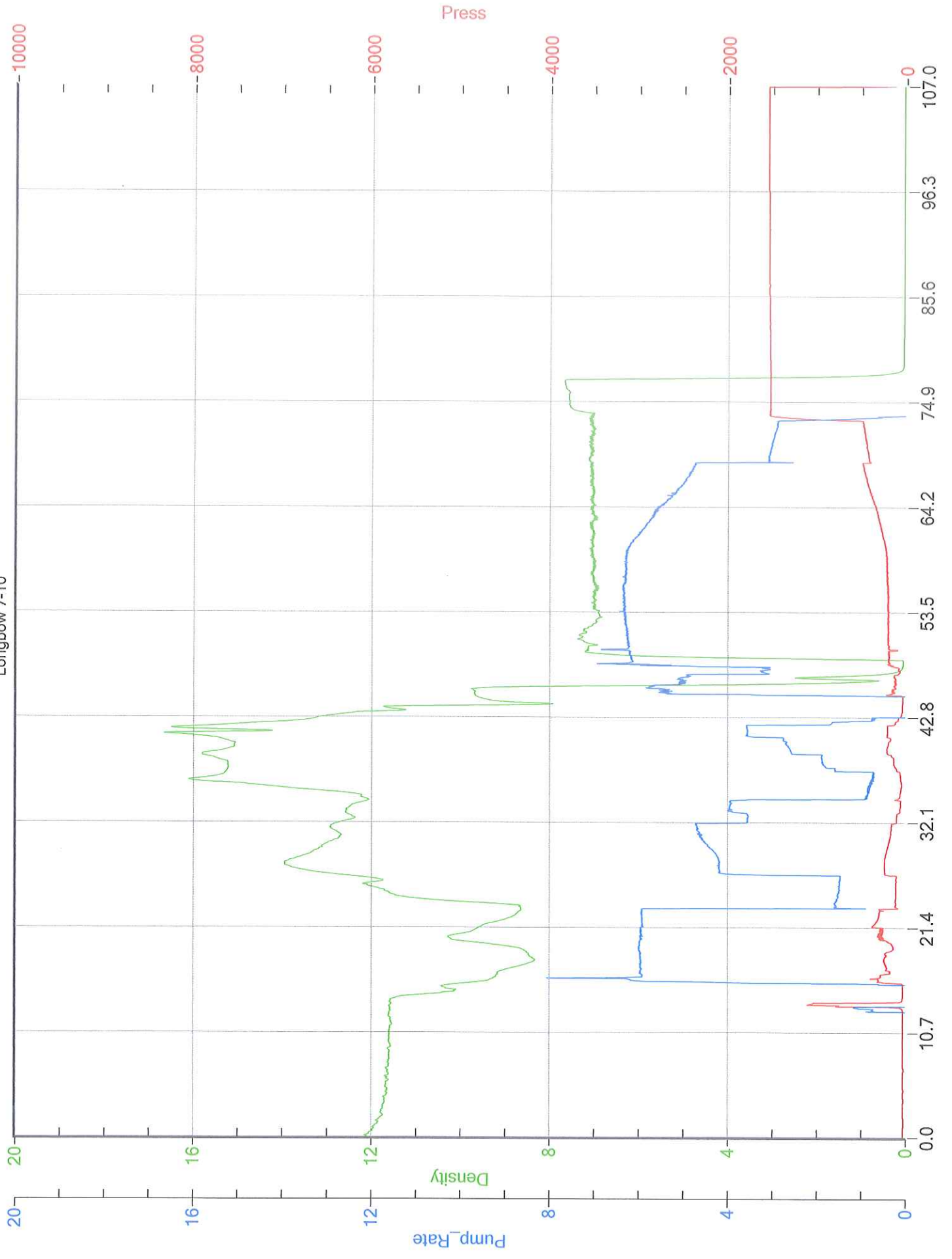
Addl. Additive	Description	Conc. (lb/sk)	Determined by	Load Volume	UOM
CFL-210	FLUID LOSS ADDITIVE - LOW TEMP	0.47	% BWOC	115.2	lbm
CLC-KOL	KOL-SEAL	5	lb/sk	1225.0	lbm
CLC-CPF	CELLOPHANE FLAKES	0.25	lb/sk	61.3	lbm
Fluid Name	Description	Rqstd Qty	Density	Yield	Water (gal/sk)
Stg 2 Disp. 1	Displacement	116.6726724	0.00	n/a	n/a

Job Number: <b>Lib1705070600/</b>		Job Purpose: <b>02 Production/Long String</b>			
Customer: <b>MERIT ENERGY COMPANY</b>			Date: <b>5/7/2017</b>		
Well Name: <b>Longbow</b>		Number: <b>7-10</b>	API/UWI:		
County: <b>Grant County</b>	City: <b>Ulysses, Kansas</b>		State: <b>KS</b>		
Cust. Rep:	Phone:	Rig Phone:	<b>0</b>		
Distance: <b>50 miles (one way)</b>		Supervisor:	<b>Victor Corona-Marta</b>		
TIME	PRESSURE - (PSI)		FLUID PUMPED DATA		COMMENTS
AM/PM	CASING	ANNULUS	VOLUME	RATE (BPM)	
5/6/2017					DATE
2100					Arrived at location
345				1st STG	Safety meeting
400	2000				Pressure test @ 2000psi
405	200		20	4	20bbls spacer HIVIS sweep
410	420		40	5	Lead cement 40bbls @13.6lbs 140sks
445					Drop plug
450	200		20	4	20bbls Disp with water
504	220		40	5	40bbls disp gone with mud
514	170		60	5	60bbls gone with mud
524	180		80	5	80bbls gone with mud
534	290		100	5	100bbls gone with mud
543	500		120	5	120bbls gone with mud
546	500		126	3	126bbls gone slow down rate
600	1060				Bump plug and check float
606					Drop bomb
630	800				Open dv tool at 800psi
930					2nd Satge
1000					Rat and mouse 17bbls @13.6 50sks
1015	350		12	4	12bbls Spacer HIVIS Sweep
1022	400		66	5	Tail cement 66bbls @13.61lbs 195sks
1054					Drop plug
					Displ with 116bbls with H2O
1109	190		50	6	50bbls gone
1122	830		100	6	100bbls gone
1124	970		106	3	106bbls gone slow down rate
1130	2300		2300		Bump plug and check float
					Had 1/2 of water returns
					Rig down
					Crew and I thanked the company man and rig crew for job opportunity.

# Merit 1 stg Longbow 7-10



# Merit 2 stg Longbow 7-10









CEMENT MIXING WATER GUIDELINES

Company Name:

**MERIT ENERGY COMPANY**

Lease Name:

**Longbow # 7-10**

County

**Grant County**

State

**KS**

Water Source:

**TANK**

Submitted By:

Date:

**5/6/2017**

pH Level

**7**

Must be less than 8.5

Sulfates

**400**

Must be less than 1,000 PPM

Chlorides

**0**

Must be less than 3,000 PPM

Temperature

**64**

COMMENTS

Customer Signature

Thank You