



GEOLOGISTS REPORT  
DRILL TIME &  
SAMPLE LOG

COMPANY: COBALT ENERGY, LLC  
ELEVATIONS: KB 3370'

FIELD: Wildcat  
LEASE: KSF 'A' #1-2

LOCATION: 2224' FSL & 2226' FEL  
SEC. 2 TWP. 15S RGE. 37W  
COUNTY: Logan STATE: KS

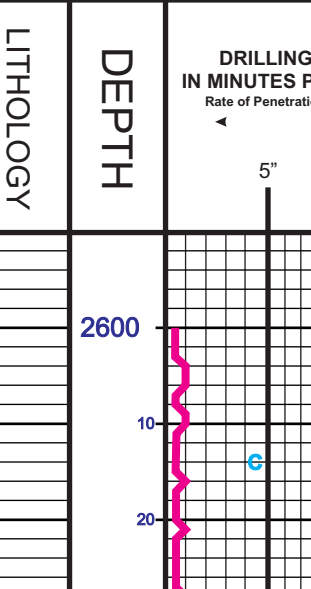
CONTRACTOR: Pickrel Drilling Co., Rig #10  
SEUD. 06/22/17 COMP. 07/27/17  
RTD. 5021' LTD. 5020'  
MUD UP: 3550' TYPE MUD: Chemical

SAMPLES SAVED FROM: 3700' TO RTD  
DRAINING TIME KEPT FROM: 3600' TO RTD  
SAMPLING EXAMINED FROM: 3700' TO RTD

GEOLOGICAL SUPERVISION FROM: 3417' TO RTD  
GEOLOGIST ON WELL: COREY N. BAKER  
Pioneer Energy Services

FORMATION TOPS  
Anhydrite 2640 (+730)  
Stollar 3665 (-295)  
Heebner 4022 (-652)  
Lansing 4081 (-711)

FORMATION LOGS  
Sample 2641 (+729)  
Sample 3669 (-299)  
Sample 4023 (-653)  
Sample 4083 (-713)



REMARKS The KSF 'A' #1-2 was plugged & abandoned as a dry hole. The well had no shows or odor and logs confirmed the decision to plug.

Respectfully Submitted,  
Corey Baker  
Vice President - Exploration  
Cobalt Energy, LLC

API #15-109-21506-00-00

LEGEND

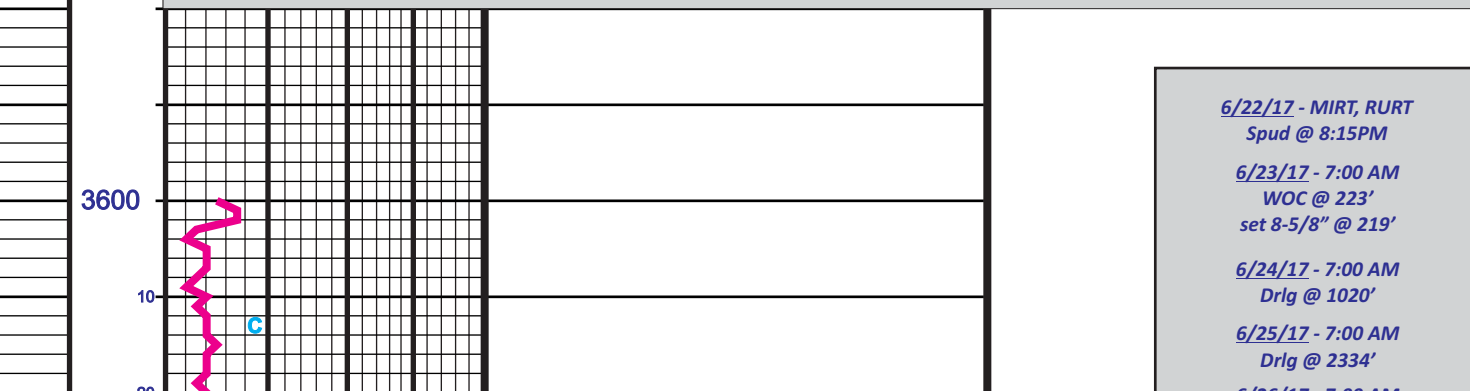


Table with columns: LITHOLOGY, DEPTH, DRILLING TIME IN MINUTES PER FOOT, OIL SHOWS, SAMPLE DESCRIPTION, REMARKS. Contains detailed well log data from 2600' to 5000' depth, including sample descriptions and remarks.

Company: COBALT ENERGY, LLC | Elevation: 3370' KB  
Lease: KSF 'A' #1-2  
Location: 2224' FSL & 2226' FEL SEC. 2 TWP. 15S RGE. 37W  
County: Logan State: Kansas