

# GEOLOGICAL REPORT

## Larry A. Nicholson

NAD 83  
33.75914949  
-100.2286746

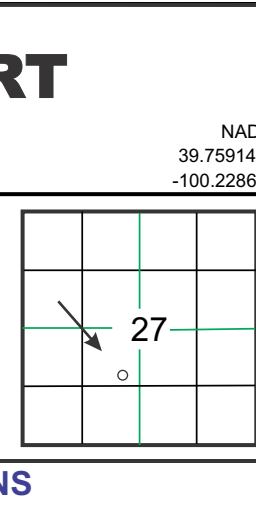
COMPANY & WELL Cobalt Energy, LLC Evelyn "A" #1-27  
LOCATION 1361' FSL 2154' FWL SW SE NE SW  
SEC 27 TWP 3S RGE 26W  
COUNTY Decatur STATE Ks

COMPANY Cobalt Energy, LLC  
API # 15-039-21239 FIELD Wildcat  
LEASE Evelyn "A" WELL # #1-27  
LOCATION SW SE NE SW  
SURVEY 1361' FSL 2154' FWL  
SECTION 27 TWP 3S RGE 26W  
COUNTY Decatur STATE Kansas

CONTRACTOR Murfin Rig # Z  
SPUD 06-14-17 04:45 COMP. \_\_\_\_\_  
RTD 06-20-17 01:15 pm LTD. 4012  
MUD UP AT 2940  
MUD TYPE MudCo Gary Schmittberger

SAMPLES SAVED FROM 3300 TO RTD  
DRILLING TIME FROM 3300 TO RTD  
SAMPLES EXAMINED FROM 3300 TO RTD  
GEOLOGICAL SUPERVISION FROM 3300 TO RTD  
WELLSITE GEOLOGIST LARRY A. NICHOLSON

ELECTRICAL SURVEYS Haliburton Neu, Den, Dual, Micro, Dev



ELEVATIONS  
K.B. 2554  
D.F. \_\_\_\_\_  
G.L. 2549  
All measurements from K.B. 2554

CASING RECORD  
Conductor of \_\_\_\_\_ w/ \_\_\_\_\_ sx  
Surface 213 of 8.5/8.23 w/ 150 sx  
Production of \_\_\_\_\_ w/ \_\_\_\_\_ sx

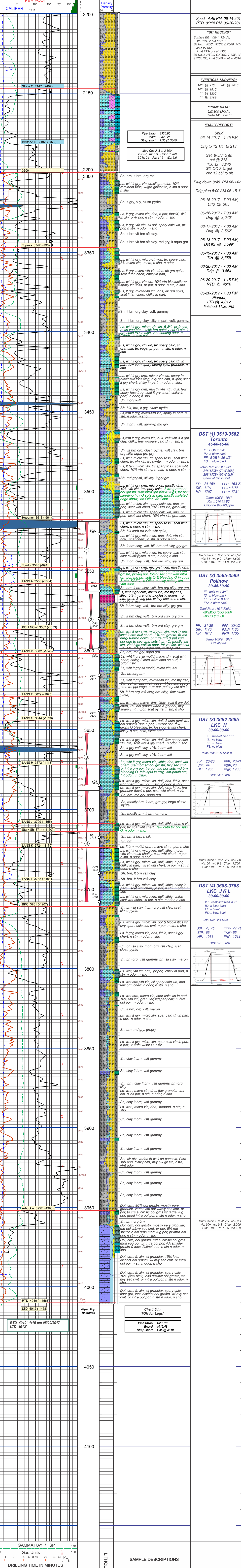
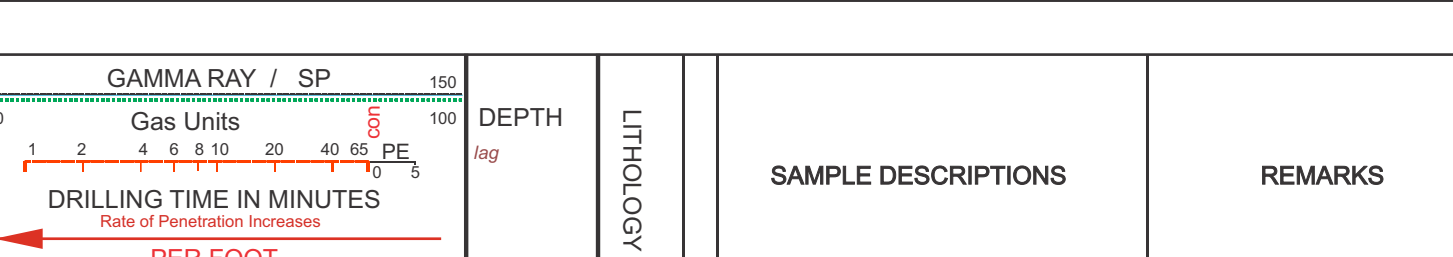
FORMATION	SAMPLE TOPS	SUBSEA DATUM	ELECLOG		REFERENCE WELL	
			TOPS	DATUM	A	B
Stone C	2147	+407	2147	+407	2123	412 -5
B/Stone C	2182	+372	2182	+372	2155	380 -8
Topeka	3351	-797	3347	-793	3319	-784 -9
Heebner	3520	-966	3518	-964	3490	-955 -9
Tomto	3547	-996	3548	-994	3519	-984 -10
LANS A	3563	-1035	3558	-1004	3531	-996 -9
POLLNOW	3589	-1035	3587	-1033	3559	-1024 -14
Stark Sh	3714	-1160	3714	-1160	3682	-1147 -13
BKC	3761	-1207	3761	-1207	3729	-1194 -13
Arbuckle	3953	-1399	3952	-1398	3930	-1395 -3
RTD	4010	-1456	4010	-1456	4000	-1465
LTD			4012	-1458	4002	-1467

REFERENCE WELLS  
A: Cobalt Energy, LLC Ritter "A" #1-32 Sec 32 T3S R26W 33S' FNL 1200 FWL KB 2636  
B: \_\_\_\_\_

REMARKS & RECOMMENDATIONS:  
Based on sample shows, dst recovery & pressures, 5 1/2" csq was run

LAN 7/92, Modified 5/05, 1/11, 4/12 Hanover, KS 66945 1inch = 25.4mm 8.5 x 97.5 216 mm x 2460 mm

### LEGEND



COMPANY Cobalt Energy, LLC ELEVATIONS 2554  
LEASE Evelyn "A" #1-27 SW SE NE SW D.F. \_\_\_\_\_  
LOCATION 1361' FSL 2154' FWL SEC. 27 TWP 3S RGE 26W G.L. 2549  
COUNTY Decatur STATE Ks All measurements from K.B. 2554