

GEOLOGICAL REPORT

WellSight Systems

Scale 1:240 (5"=100') Imperial
Measured Depth Log

Well Name: CANNON # 1
Location: SECTION 13-T34S-5E
License Number: API:15-035-24652
Spud Date:
Surface Coordinates: 2240' FSL 730' FEL

Region: COWLEY CO, KS
Drilling Completed:

Bottom Hole
Coordinates:
Ground Elevation (ft): 1128 K.B. Elevation (ft): 1136
Logged Interval (ft): To: Total Depth (ft):
Formation:
Type of Drilling Fluid: CHEM

Printed by MUD.LOG from WellSight Systems 1-800-447-1534 www.WellSight.com

OPERATOR

Company: LOTUS OPERATING COMPANY,I.I.c.
Address: 100 S. Main Ste. 420
Wichita, Kansas 67202

GEOLOGIST

Name: JOE M.BAKER
Company: Mako Operating Co., LLC
Address: P.O BOX 931
ANDOVER KANSAS 67002

E-Log Tops

IATAN
STALNAKER
LANSING LM
IOLA LM
LAYTON SD
KANSAS CITY LIME
DODDS CREEK SD
MARMATON /ALTAMONT
CHEROKEE SH
MISS LIME
NORTHVIEW SH
COMPTON LM
RTD
LTD

Comments

ROCK TYPES

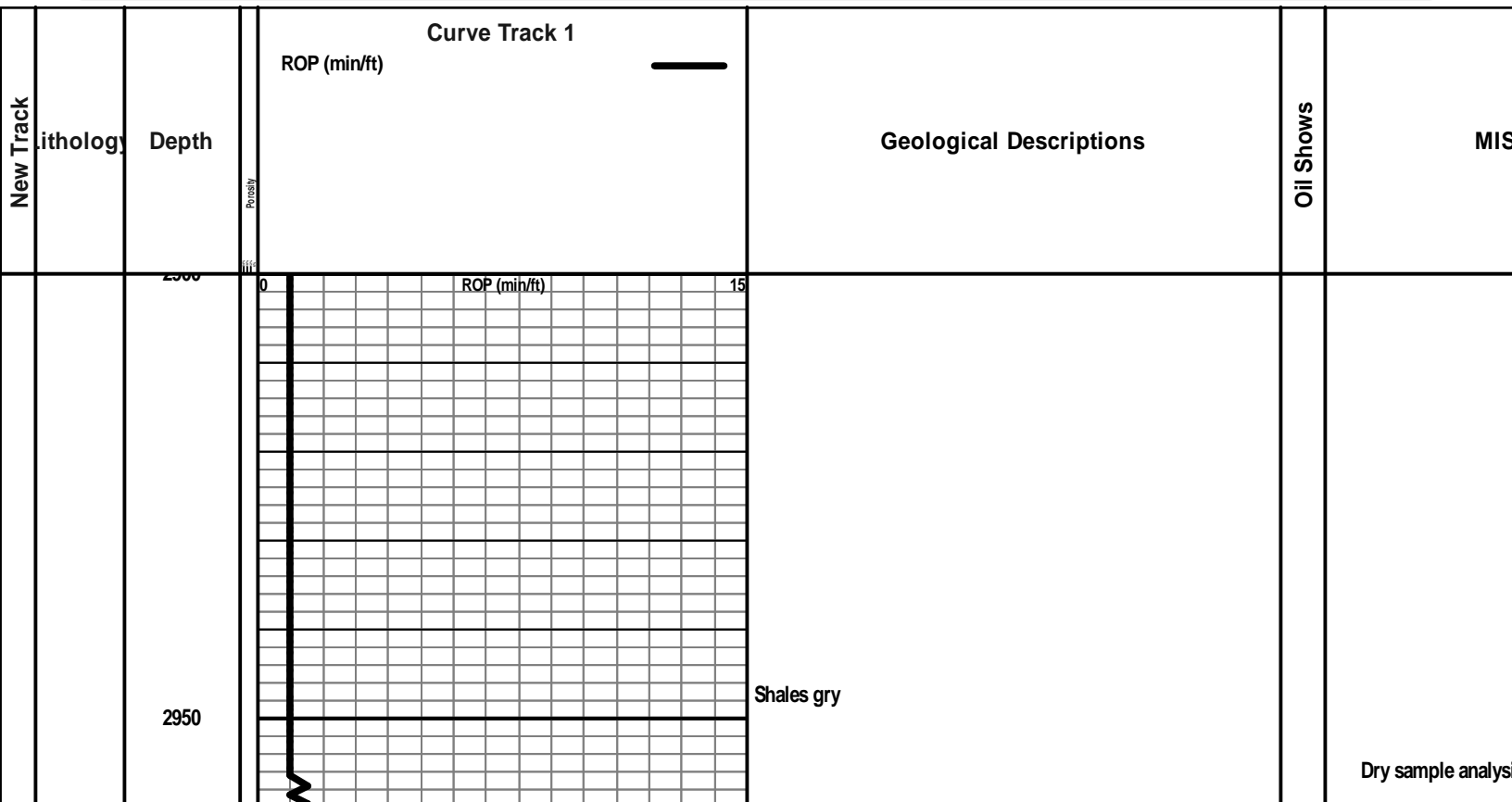
Anhy	Clyst	Gyp	Mrlst	Shgy
Bent	Coal	Igne	Salt	Slstst
Brec	Congl	Lmst	Shale	Ss
Cht	Dol	Meta	Shcol	Till

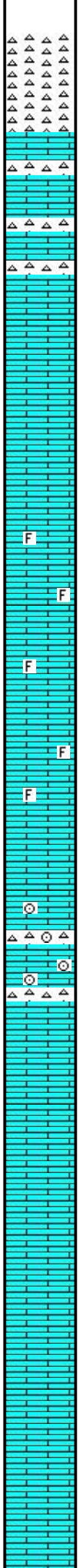
ACCESSORIES

MINERAL	Gyp	FOSSIL	Ostra	Slststrg
Anhy	Hvymn	Algae	Pelec	Ssstrg
Arggrn	Kaol	Amph	Pellet	TEXTURE
Arg	Marl	Belm	Pisolite	Boundst
Bent	Minxl	Bioclst	Plant	Chalky
Bit	Nodule	Brach	Strom	Cryxln
Brecfrag	Phos	Bryozoa	STRINGER	Earthy
Calc	Pyr	Cephal	Anhy	Finexln
Carb	Salt	Coral	Arg	Grainst
Chtdk	Sandy	Crin	Bent	Lithogr
Chtlt	Silt	Echin	Coal	Microxln
Dol	Sil	Fish	Dol	Mudst
Feldspar	Sulphur	Foram	Gyp	Packst
Ferrpel	Tuff	Fossil	Ls	Wackest
Ferr		Gastro	Mrst	
Glau		Oolite		

OTHER SYMBOLS

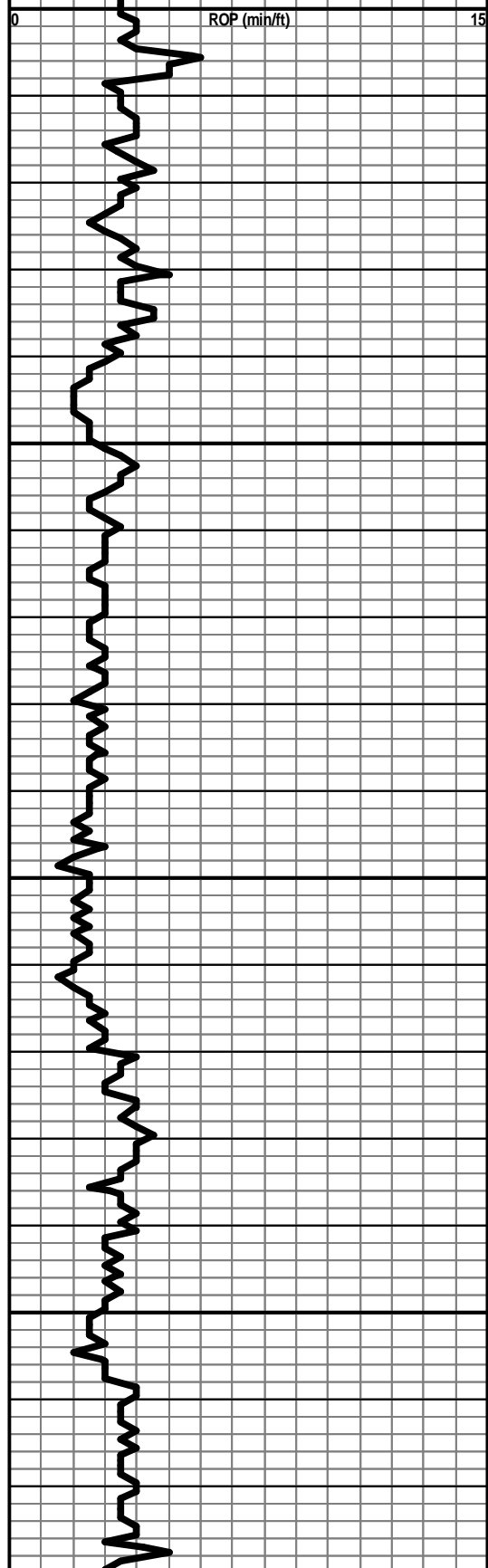
POROSITY	Vuggy	ROUNDING	Spotted	EVENT
Earthy	SORTING	Rounded	Ques	Rft
Fenest	Well	Subrnd	Dead	Sidewall
Fracture	Moderate	Subang	INTERVAL	
Inter	Poor	Angular	Core	
Moldic		OIL SHOW	Dst	
Organic		Even		
Pinpoint				





3000
3050
3100
3150

**MISS LM
2978 (-1842)**



Chert wh/tan staining fr weather por fluorr 1-2 psc

Ls tan fnxn sl fossil fluor ~10% fr vuggy por
chert aa wh/tan stain weath por cherts wh /tan staining

Ls tan /wh microxn dns abund chert wh-blue fresh ang sharp
dns

Ls dk brn vy dns microIn few psc of Ls fnxn w/ sl stain

Ls wh/tan sl fossil 2 psc w/ fluor no odor abund shales gry/grn

Ls tan /wh a few pcs w fluor,fossil aa some medxn lm calc
inclu ,crush easy,ft odor

Ls aa tan /wh f-medxn calc incl,sl chalky 1-2 psc w/ fluor no
odor,lt streaming oil @ surface of tray?

Ls aa tan/wh f-medxn- fossil por,1-2 pcs w/ flour no odor,vss

Ls tan vy fossil ,crnoid porosity possible gas bubbs @ break
,ssfo? 1-2psc w/ fluor

Ls aa tan f-medxn fossil inc chert wh dns fresh
1-2 psc w/ fluor

Ls aa tan fossil ,crinoid lt oil @ brk few psc w/ stn

Ls tan dns inc cherts wh fresh no shows

Ls tan f-med xln abund chert fresh wh-blue fossil /spiculated no
por

Ls crm tan f-mrdxn foss lt oil@brk

Increase in shales dkgy/grn ls tan medxn SSO@ brk

Ls tan/gry medxn subfossil lg calc inclu

Start 10 wet
samples @ 30
Hellman trail

3200

3250

3300

3350

3400

0

ROP (min/ft)

15

Ls tan/gry f-medxl n 1-2 pcs w/ fluor vssolt oil @ brk

Ls /dolo dk brn vy fnxln-micro brittle sl argill/glaconitic in part

Ls /dolo aa fnxln argill inpt a few psc tan lsw/fluor so @ brk no odor

Ls/dolo dk brn dns micro brittle sl glaconitic

Ls aa dolo dns microxl n glacoxls

Ls/dol dk brn dns microln aa

Ls dk aa inc in lt tan medxl n sso ,shales gry grn

Ls wh/tan "wash white" chalky

COWLEY?

Dolo/dk brn glaconitic 2-3 psc w/ fluor sso @ brk w, isolated gas bubs no odor

Dolo/dk brn aa few psc w/ fluor ,no odor sso/gas @ brk inc in gy/grn shale

Dolo /ls dk brn fnxln glconic brittle gas bubbs& scum oil @ brk

Kinderhook
3394(-2258)

Ls tan brn fnxln not much in samples

Mud-Co 5/16/
3354'
Vis: 52
Wt :9.3+
WL: 8
G/S:10/26
LCM: 3#

3400

0

ROP (min/ft)

15

Shales/dolo dk brn lt odor inc gas bubbs @ brk

Shales dk brn/blk fr odor "wash brown"

RTD 3434 (-2298)

3450

3500

