

Geologic Report
Aaron L. Young

Drilling Time and Sample Log

Scale 1:240 (5"=100') Imperial
Measured Depth Log

Well Name: Sutton #3
API: 15-135-25957
Location: Section 8 - T18S - R24W
License Number: 34996
Spud Date: 7 / 15 / 2017
Surface Coordinates: 780' FSL and 1745 FWL
Approx. SE - NW - SE - SW
Region: Ness Co., KS
Drilling Completed: 7 / 23 / 2017
Bottom Hole Coordinates:
Ground Elevation (ft): 2311' K.B. Elevation (ft): 2316'
Logged Interval (ft): 3500' To: 4400' Total Depth (ft): 4400'
Formation: Mississippian
Type of Drilling Fluid: Chemical - Mud-Co

Printed by MUD.LOG from WellSight Systems 1-800-447-1534 www.WellSight.com

OPERATOR

Company: Stewart Producers, Inc
Address: PO BOX 546
Mt. Vernon, IL 62864

GEOLOGIST

Name: Aaron L. Young, M.S.
Company: Young Consulting, LLC
Address: 100 S. Main, Suite 505
Wichita, Kansas 67202

General Info

CONTRACTOR: WW Drilling, Rig #2

BIT RECORD:

No.	Size	Make	Jets	Out	Feet	Hours
1	12-1/4	Smith	18-18-18	218	213	5.75
2	7-7/8	Smith F27	15-15-15	4400	4182	107.50

SURVEYS: 218'-.75, 4235'-1.75, 4330'-1.75, 4400-.75

GENERAL DRILLING AND PUMP INFORMATION:

Drilling with 36,000 - 38,000 lbs. on bit and approx 80-85 RPM.
Running 8 stands of collars; 476.15'
Pumping approx 700-850 psi at standpipe.

Daily Status

7/15/17 - Spud, set 218' 8 5/8" casing w/ 150 sx Common 3% cc & 2% gel

7/16/17 - WOC @ 218'

7/17/17 - Drilling @ 1785'

7/18/17 - Drilling @ 2705'

7/19/17 - Drilling @ 3450'

7/20/17 - Drilling @ 3965'

7/21/17 - DST #1 4190' - 4235'

7/22/17 - DST #2 4257' - 4330'

7/23/17 - Logged, ran 4398' 5 1/2" production casing, cem w/ 195 sx, port collar @ 1569'. Cem rathole w/ 30 sx

DST #1 FT. SCOTT
15" - 30" - 35" - 30"

IF: Slowly built to 1/2"

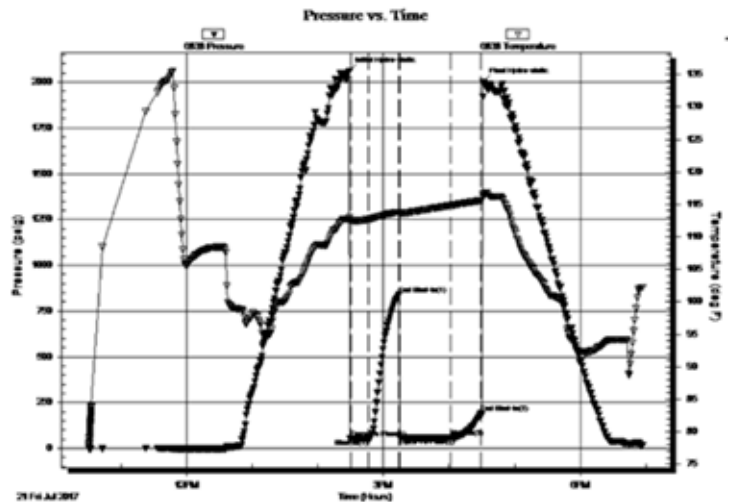
ISI: No blow

FF: Slowly built to 1"

FSI: No blow

Rec'd: 30' SOCM (5% O, 95% M)

SIP: 838-193#, FP: 54-54#, 58-58#, HP: 2060-1999#



DST #2 MISSISSIPPIAN
15" - 30" - 45" - 90"

IF: BOB in 3 min

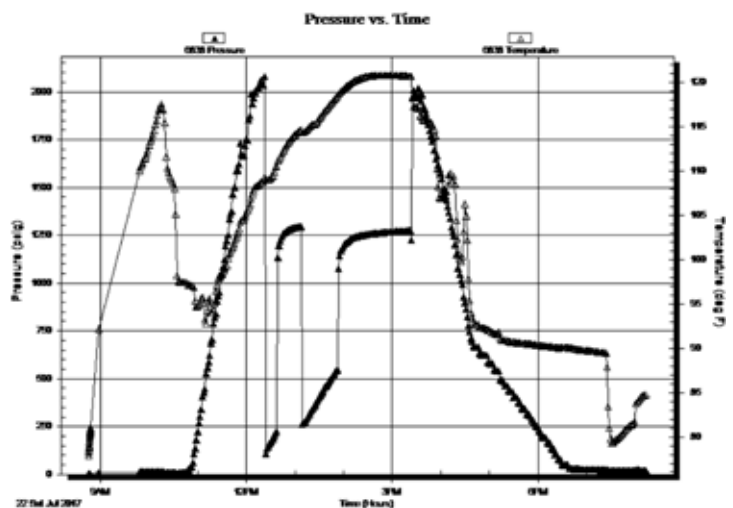
ISI: Slowly built to 3"

FF: BOB 2 min

FSI: 1/4" blow died in 35 min

Rec'd: 183' GOCM (20% G, 15% O, 65% M), 1174' GMCO
(25% G, 65% O, 10% M), 285' GIP

SIP: 1292-1276# FP: 77-229#, 244-554# HP: 2087-2069



ROCK TYPES

	Anhy
	Bent
	Brec
	Cht
	Clyst
	Coal
	Congl
	Dol

	Gyp
	Igne
	Lmst
	Meta
	Mr1st
	Salt
	Shale
	Shcol

	Shgy
	Slstst
	Ss
	Till
	Carb sh
	Dol
	Dtd
	Gry sh

	Sandylms
	Shale
	Slststn
	Shlyslts
	Sltysh
	Lms

ACCESSORIES

MINERAL

- Anhy
- Arggrn
- Arg
- Bent
- Bit
- Breclrag
- Calc
- Carb
- Chtdk
- Chtlt
- Dol
- Feldspar
- Ferrpel
- Ferr
- Glau
- Gyp
- Hvymin
- Kaol
- Marl
- Minxl
- Nodule
- Phos
- Pyr



- Salt
- Sandy
- Silt
- Sil
- Sulphur
- Tuff
- Chlorite
- Dol
- Sand
- Silty

FOSSIL

- Algae
- Amph
- Belm
- Bioclst
- Brach
- Bryozoa
- Cephal
- Coral
- Crin
- Echin
- Fish
- Foram



- Fossil
- Gastro
- Oolite
- Ostra
- Pelec
- Pellet
- Pisolite
- Plant
- Strom
- Fuss
- Oomold

STRINGER

- Anhy
- Arg
- Bent
- Coal
- Dol
- Gyp
- Ls
- Mrst
- Sltstrg
- Ssstrg
- Carbsh



- Clystn
- Dol
- Grysh
- Gryslt
- Lms
- Sandylms
- Sh
- Sltstn

TEXTURE

- Boundst
- Chalky
- Cryxln
- Earthy
- Finexln
- Graint
- Lithogr
- Microxln
- Mudst
- Packst
- Wackest

OTHER SYMBOLS

POROSITY TYPE

- Earthy
- Fenest
- Fracture
- Inter
- Moldic
- Organic
- Pinpoint
- Vuggy

SORTING

- Well
- Moderate
- Poor

ROUNDING

- Rounded
- Subrnd
- Subang
- Angular

OIL SHOWS

- Even
- Spotted
- Ques
- Dead
- Gas show

INTERVALS

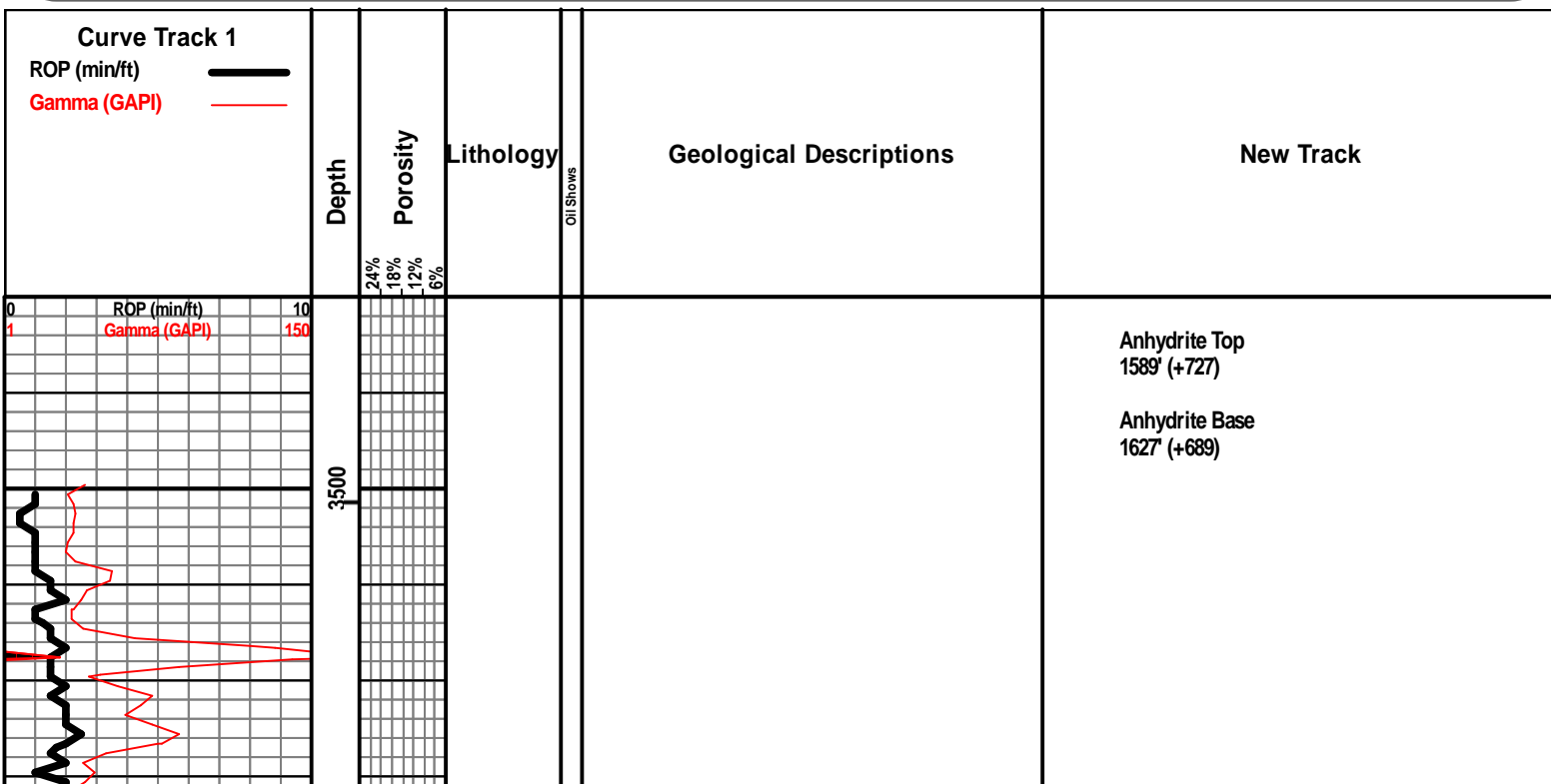
- Core
- Dst

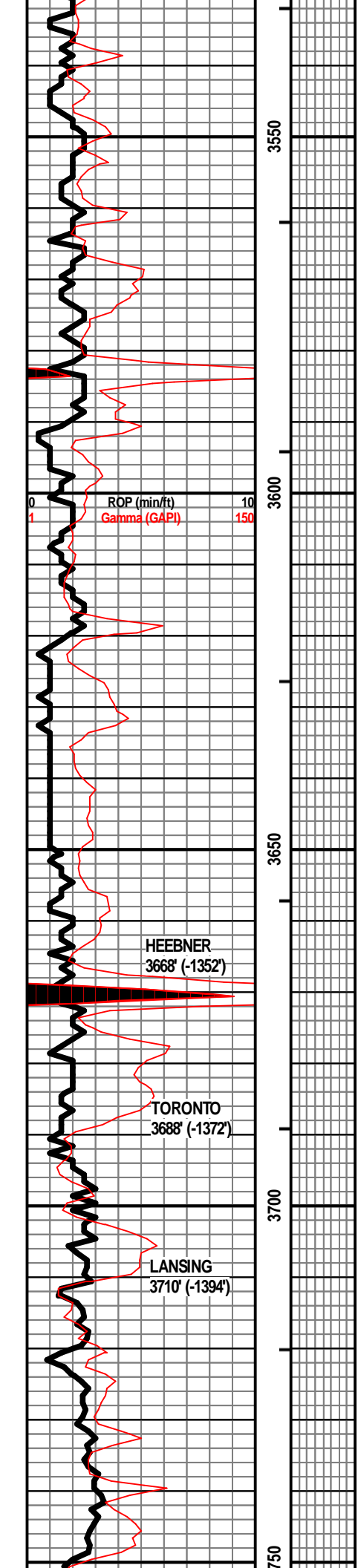


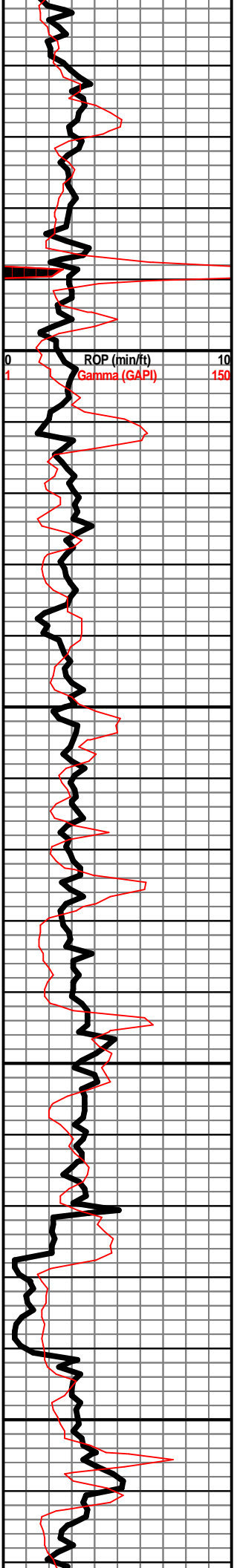
Dst

EVENTS

- Rft
- Sidewall
- Conn



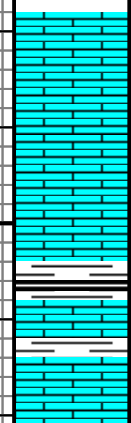




3
3800
3850
3900
3950

ROP (min/ft) 10
Gamma (GAPI) 150

0
1



LS - GY / TAN, F XLN, F / G OOLMOLDIC POR,
NS, NO ODOR, NO ODOR, BRI YEL FLUOR

LS - GY / TAN, F XLN, P / F OOLMOLDIC POR,
NS, NO ODOR, SLI YEL FLUOR IN PT, W/ LS -
WHT / CRM, VF XLN, V CHKY / CHKY

SH - BLK, SLI CARB, W/ LS - TAN F XLN, MOD
DNS, W/ SH - GRN / RD

SH - GRN / RD, W/ LS - TAN / GY, F XLN, MOD
DNS / DNS

LS - CRM / WHT, VF XLN, SUBCHKY / CHKY

WT 9.0
VIS 49
LCM 1/2#

WT 9.0
VIS 62
LCM 1#

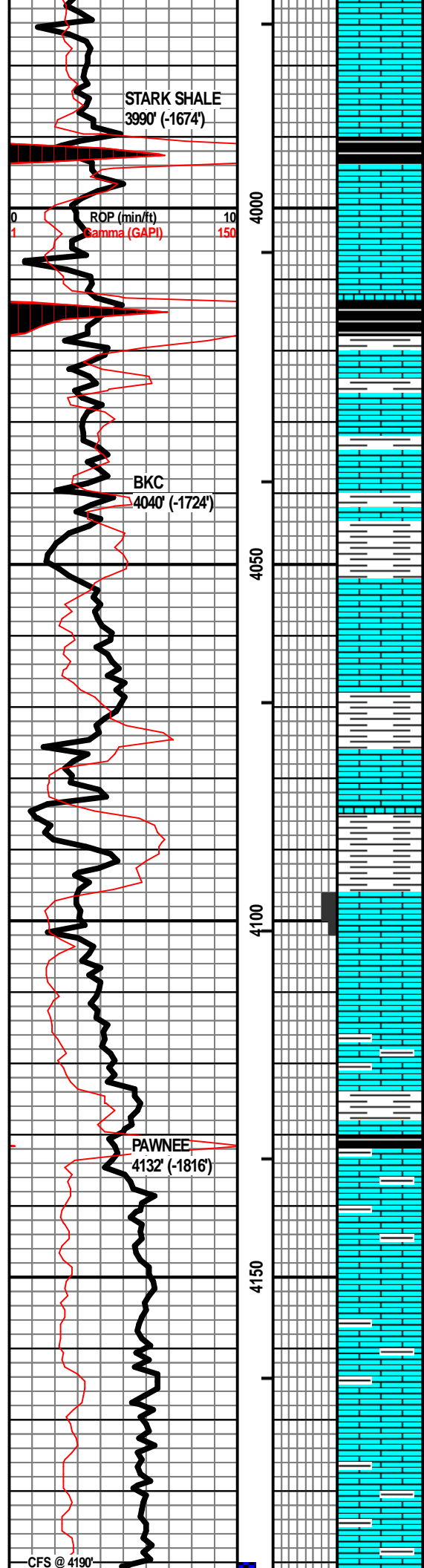
WT 9.1
VIS 62
LCM 1#

WT 9.2
VIS 59
LCM 1/2#

WT 9.2
VIS 55
LCM 1/2#

WT 9.2
VIS 56
LCM 1/2#

WT 9.2
VIS 57
LCM 1/2#



LS - CRM / TAN, VF / F XLN, MOD DNS

LS - CRM / TAN, VF / F XLN, MOD DNS / SUBCHKY, W/ CHT - GY, SLI TRANSLUCNT, DNS

SH - GR / BLK, CARB

LS - CRM, VF / F XLN, SUBCHKY / MOD DNS

SH - BLK, CARB, W/ LS - CRM, VF / FXLN, MOD DNS / DNS, W/ SH - GRN

LS - DK BRN, F XLN, DNS, FOSS, W/ SH - GRN

SH - GRN / RD / GY, W/ LS - CRM, F XLN, MOD DNS, FOSS

SH - GRN / RD / MAR, W/ LS - CRM, VF / F XLN, SUBCHKY / CHKY IN PT

LS - TAN / GY, VF / F XLN, SUBCHKY, W/ SH - GY / DK GY

LS - TAN, VF / F XLN, MOD DNS, SUBCHKY IN PT

SH - LT GRN / LT GY, V SOFT

LS - CRM, VF / F XLN, PRED MOD DNS / SUBCHKY, STYLITIZED IN PT, W/ SH - GY, W/ FEW PIECES LS - TAN, F XLN, P / F INTEROOLITIC POR, NSFO, SLI OIL SHEEN, NO ODOR, YEL FLUOR

LS - TAN / GY, VF / F XLN, MOD DNS / SUBCHKY

LS - GY, VF / F XLN, SUBCHKY, SHLY IN PT

SH - BLK, SLI CARB, W/ SH - GRN / GY, W/ LS - WHT / CRM, VF XLN, CHKY

LS - GY, VF XLN, SHLY

LS - TAN / GY, VF / F XLN, MOD DNS / DNS

LS - TAN / GY, F / VF XLN, MOD DNS / DNS, SLI SHLY IN PT

LS - CRM / TAN, VF XLN, SUBCHKY

LS - DK GY, VF / F XLN, MOD DNS / DNS, SHLY

WT 9.2
VIS 56
LCM 1/2#

WT 9.2
VIS 56
LCM 1/2#

WT 9.2
VIS 52
LCM 1#

WT 9.2
VIS 55
LCM 1#

WT 9.3
VIS 58
LCM 1#

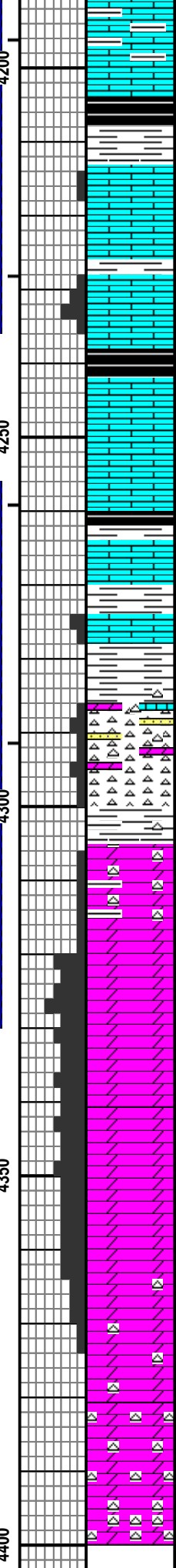
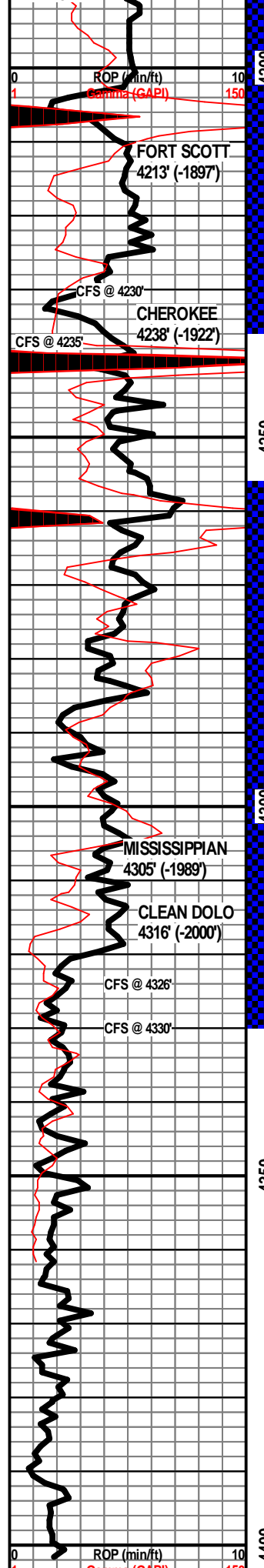
WT 9.3
VIS 53
LCM 1#

WT 9.3
VIS 55
LCM 1/2#

WT 9.3+
VIS 54
LCM 1/2#

WT 9.4
VIS 50
LCM 1/2#

SHORT TRIP @ 4190'
STRAP 1 1/2 LONG



LS - DK GY, VF / F XLN, PRED DNS, MOD DNS IN PT, V SHLY

SH - BLK, CARB

LS - CRM / TAN / LT BRN IN PT, F XLN, P INTXLN + VUG POR, OOLITIC IN PT, P INTEROOLITIC POR, VSSFO, SLI ODOR, G YEL-GRN FLUOR, FOSS

LS - CRM / TAN, F XLN, MOD DNS / DNS, NO VIS POR, NS, NO ODOR, ABUND FOSS

LS - CRM / TAN, F XLN, P / F VUG POR, F / G INTXLN POR, FSFO, G SHO GB, G ODOR, VG YEL-GRN FLUOR

SH - BLK, CARB

LS - CRM / TAN, F XLN, MOD DNS / DNS, FOSS IN PT, W / SH - RD / MAR / PURP / YEL / GRN

LS - CRM / TAN, VF / F XLN, MOD DNS / DNS, FOSS

SH - GY / BLK, SLI CARB, W / LS - PRED CRM / OFF-WHT, TAN IN PT, VF / F XLN MOD DNS

SH - GRN / GY, W / LS - TAN, F XLN, DNS, FOSS

LS - CRM / TAN, VF / F XLN, PRED DNS, P INTXLN POR IN PT, VSSFO, F ODOR, G YEL-GRN FLUOR

CONGL - SH - GRN / RD / YEL, W / DOLO - TAN / BRN, F XLN, P / F INTXLN POR, FSFO, F ODOR, W / FEW PIECES SS - WHT, VF GR, W SRDT, W CEM, V DNS, W CHT - WHT / TAN, SLI TRANSLUCNT, FRSH, SLI EDG STN IN PT

CHT - WHT / TAN / GY / YEL / GRN, SLI TRANSLUCNT, OPAQ IN PT, W / SH - GRN / YEL, GY, SLTY IN PT

DOLO - TAN / GY, F XLN, P / F INTXLN POR, FSFO IN PT, F ODOR, SLI YEL-GRN FLUOR, ABUND DEAD OIL STNW CHT - TAN / GY / YEL, FRSH, W / SH - GRN / RD

DOLO - TAN / GY, F XLN, P / F INTXLN + VUG POR, FSFO IN PT, F ODOR, F YEL-GRN FLUOR, ABUND DEAD OIL STN, FOSS IN PT W / CHT - WHT / TAN / GY, SLI TRANSLUCNT, FRSH

DOLO - CRM / GY, F / M XLN, PRED F / G INTXLN + VUG POR, GSFO, LT BRN OIL, G ODOR, G YEL-GRN FLUOR, ABUND FOSS, FEW DNS PIECES WITH P VIS POR, BUT BLEEDING OIL

DOLO - CRM / TAN, F / M XLN, G INTXLN + VUG POR, GSFO, G ODOR, G YEL-GRN FLUOR, FOSS, LESS FULLY SAT PIECES THAN ABOVE

DOLO - CRM / TAN, F / M XLN, G INTXLN + VUG POR, FSFO, G ODOR, G YEL-GRN FLUOR, FOSS, SOME PIECES APPEAR BARREN

DOLO - CRM / TAN, F / M XLN, F / G INTXLN + VUG POR, SSFO, G ODOR, ABUND OIL SHEEN, FOSS, MORE BARREN PIECES THAN ABOVE

DOLO - WHT / GY, F / M XLN, F INTXLN + VUG POR, SSFO, POR MOSTLY BARREN, FEW OIL DROP IN EACH PIECE UPON BREAKING, SLI YEL-GRN FLUOR, W / FEW PIECES CHT - WHT / GY

DOLO - WHT / GY, VF / F XLN, MOD DNS / SUBCHKY, CHKY IN PT, NS, W / CHT - WHT / GY, FRSH, PRED OPAQ, TRANSLUCNT IN PT

DOLO - WHT / CRM, F XLN, MOD DNS, W / CHT - WHT / GY, FRSH, PRED OPAQ, TRANSLUCNT IN PT

DOLO - WHT / CRM, F XLN, MOD DNS, W / ABUND CHT - WHT / GY, FRSH, PRED OPAQ, TRANSLUCNT IN PT

STRAP 1.40 LONG
WINDY

WT 9.2
VIS 50
LCM 1#

DST #1 FT. SCOTT
15" - 30" - 35" - 30"

IF: Slowly built to 1/2"
ISI: No blow
FF: Slowly built to 1"
FSI: No blow

Rec'd: 30' SOCM (5% O, 95% M)

IH: 2060#
IF: 54-54#
ISI: 838#
FF: 58-58#
FSI: 193#
FH: 1999#

WT 9.2
VIS 56
LCM 1#

DST #2 MISSISSIPPIAN
15" - 30" - 45" - 90"

IF: BOB in 3 min
ISI: Slowly built to 3"
FF: BOB 2 min
FSI: 1/4" blow died in 35 min

Rec'd: 183' GOCM (20% G, 15% O, 65% M), 1174' GMCO (25% G, 65% O, 10% M), 285' GIP

IH: 2087#
IF: 77-229#
ISI: 1292#
FF: 244-554#
FSI: 1276#
FH: 2069#

NOTE: LOWER 200' DRILL TIME SLID 2' TO MATCH GAMMA RAY

RTD 4400'