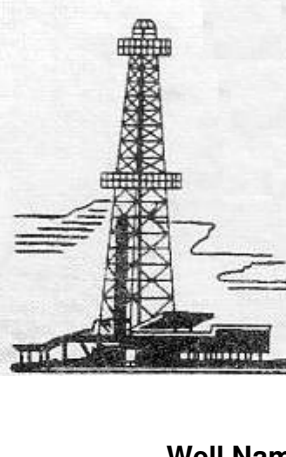


WELLSITE GEOLOGIST'S REPORT

VERNON C. SCHRAG
CONSULTANT GEOLOGIST



Scale 1:240 (5"=100') Imperial

Well Name: SISTERS #1-23
 Location: NE SE NW SEC. 23-19S-29W
 Licence Number: API: 15-101-22593
 Spud Date: May 16, 2017
 Surface Coordinates: 663' FNL & 1129' FWL

Region: Lane Co., KS
 Drilling Completed: May 23, 2017

Bottom Hole Coordinates:
 Ground Elevation (ft): 2823' K.B. Elevation (ft): 2833'
 Logged Interval (ft): 3800' To: RTD Total Depth (ft): 4540'
 Formation: Ft. Scott (WIW)
 Type of Drilling Fluid: Chemical Premix (Displaced)

Printed by MUD.LOG from WellSight Systems 1-800-447-1534 www.WellSight.com

OPERATOR:

Company: Larson Engineering Inc.
 Address: 562 West State Road 4
 Olin, KS 67564-8561

DRILLING CONTRACTOR:

Southwind Drilling Co., Rig #8

DP 4.5" XH (16.6#); DC 6-1/4" x 2-3/8" x 496'; Kelly 40.00'; Tool Joint 5.5" ; Bit: HA-23X, 7-7/8", standard jets 14-14-14; rpm 80, WOB 35k; Kelly Bushing 10' above ground level; Bill Sanders (tool pusher), Doug Roberts (daylight driller).

CASING:

Ran 6 jts new 8-5/8" 20# R3 STC 8rd csg. Tallied 253', set @ 266' KB.

Ran 107 jts new 5-1/2" 15.5# R3 LTC 8rd csg. Tallied 4545.16', set @ 4541' KB.

CIRCULATION SYSTEM:

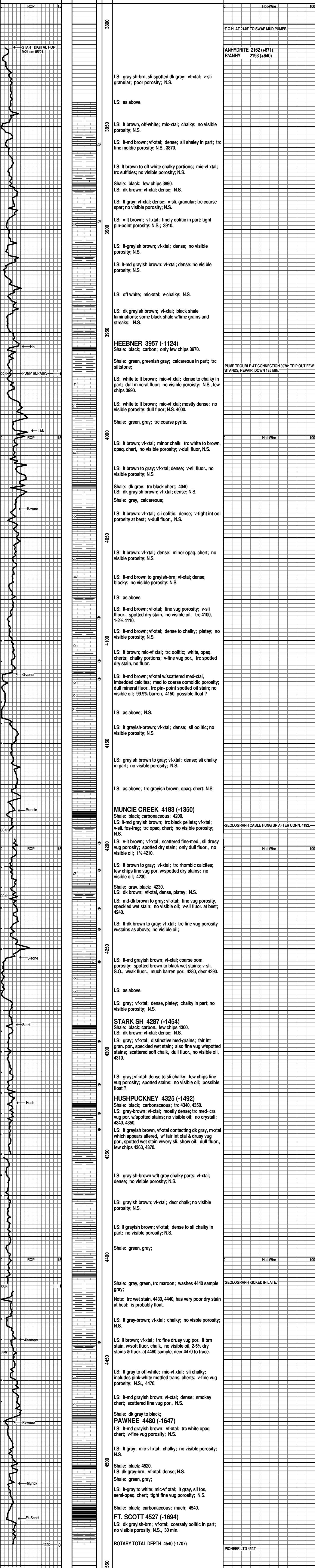
Continental EMSCO D-300, duplex, 6 x 14 (from 2145'), 60 spm, Chemical, premix, earth pits, MudCo/Service Mud, Inc., Jason Whiting

OPEN HOLE LOGS:

DN, DI (SP), ML, No Sonic; stacked tools, 5" detail LTD-3600; 2" DI to surface casing; Pioneer Wireline Services, Hays, KS, LTD 4542'.

DRILL STEM TESTS:

None.



RTD 12:37 AM
05/23/2017