



# TEMPORARY ABANDONMENT WELL APPLICATION

OPERATOR: License# \_\_\_\_\_  
 Name: \_\_\_\_\_  
 Address 1: \_\_\_\_\_  
 Address 2: \_\_\_\_\_  
 City: \_\_\_\_\_ State: \_\_\_\_\_ Zip: \_\_\_\_\_ + \_\_\_\_\_  
 Contact Person: \_\_\_\_\_  
 Phone: ( \_\_\_\_\_ ) \_\_\_\_\_  
 Contact Person Email: \_\_\_\_\_  
 Field Contact Person: \_\_\_\_\_  
 Field Contact Person Phone: ( \_\_\_\_\_ ) \_\_\_\_\_

API No. 15- \_\_\_\_\_  
 Spot Description: \_\_\_\_\_  
 \_\_\_\_\_ - \_\_\_\_\_ - \_\_\_\_\_ - \_\_\_\_\_ Sec. \_\_\_\_\_ Twp. \_\_\_\_\_ S. R. \_\_\_\_\_  E  W  
 \_\_\_\_\_ feet from  N /  S Line of Section  
 \_\_\_\_\_ feet from  E /  W Line of Section  
 GPS Location: Lat: \_\_\_\_\_, Long: \_\_\_\_\_  
(e.g. xx.xxxxx) (e.g. -xxx.xxxxx)  
 Datum:  NAD27  NAD83  WGS84  
 County: \_\_\_\_\_ Elevation: \_\_\_\_\_  GL  KB  
 Lease Name: \_\_\_\_\_ Well #: \_\_\_\_\_  
 Well Type: (check one)  Oil  Gas  OG  WSW  Other: \_\_\_\_\_  
 SWD Permit #: \_\_\_\_\_  ENHR Permit #: \_\_\_\_\_  
 Gas Storage Permit #: \_\_\_\_\_  
 Spud Date: \_\_\_\_\_ Date Shut-In: \_\_\_\_\_

	Conductor	Surface	Production	Intermediate	Liner	Tubing
Size						
Setting Depth						
Amount of Cement						
Top of Cement						
Bottom of Cement						

Casing Fluid Level from Surface: \_\_\_\_\_ How Determined? \_\_\_\_\_ Date: \_\_\_\_\_  
 Casing Squeeze(s): \_\_\_\_\_ to \_\_\_\_\_ w / \_\_\_\_\_ sacks of cement, \_\_\_\_\_ to \_\_\_\_\_ w / \_\_\_\_\_ sacks of cement. Date: \_\_\_\_\_  
(top) (bottom) (top) (bottom)  
 Do you have a valid Oil & Gas Lease?  Yes  No  
 Depth and Type:  Junk in Hole at \_\_\_\_\_  Tools in Hole at \_\_\_\_\_ Casing Leaks:  Yes  No Depth of casing leak(s): \_\_\_\_\_  
(depth) (depth)  
 Type Completion:  ALT. I  ALT. II Depth of:  DV Tool: \_\_\_\_\_ w / \_\_\_\_\_ sacks of cement  Port Collar: \_\_\_\_\_ w / \_\_\_\_\_ sack of cement  
(depth) (depth)  
 Packer Type: \_\_\_\_\_ Size: \_\_\_\_\_ Inch Set at: \_\_\_\_\_ Feet  
 Total Depth: \_\_\_\_\_ Plug Back Depth: \_\_\_\_\_ Plug Back Method: \_\_\_\_\_

**Geological Data:**

Formation Name	Formation Top	Formation Base	Completion Information
1. _____	At: _____	to _____ Feet	Perforation Interval _____ to _____ Feet or Open Hole Interval _____ to _____ Feet
2. _____	At: _____	to _____ Feet	Perforation Interval _____ to _____ Feet or Open Hole Interval _____ to _____ Feet

UNDER PENALTY OF PERJURY I HEREBY ATTEST THAT THE INFORMATION CONTAINED HEREIN IS TRUE AND CORRECT TO THE BEST OF MY KNOWLEDGE

Submitted Electronically

<b>Do NOT Write in This Space - KCC USE ONLY</b>	Date Tested: _____	Results: _____	Date Plugged: _____	Date Repaired: _____	Date Put Back in Service: _____
	Review Completed by: _____ Comments: _____				
TA Approved: <input type="checkbox"/> Yes <input type="checkbox"/> Denied Date: _____					

**Mail to the Appropriate KCC Conservation Office:**

	KCC District Office #1 - 210 E. Frontview, Suite A, Dodge City, KS 67801	Phone 620.682.7933
	KCC District Office #2 - 3450 N. Rock Road, Building 600, Suite 601, Wichita, KS 67226	Phone 316.337.7400
	KCC District Office #3 - 137 E. 21st St., Chanute, KS 66720	Phone 620.902.6450
	KCC District Office #4 - 2301 E. 13th Street, Hays, KS 67601-2651	Phone 785.261.6250

### General

Well ID 120889  
Well Bernice 2-17H  
Company Sandridge  
Operator - \* -  
Lease Name Bernice  
Elevation 1290.00 ft  
Production Method Other  
Dataset Description

Comment

### Surface Unit

Manufacturer - \* -  
Unit Class - \* -  
Unit API Number - \* -  
Measured Stroke Length 100.000 in  
Rotation CW  
Counter Balance Effect (Weights Level) - \* - Klb  
Weight Of Counter Weights 2000 lb

### Prime Mover

Motor Type Electric  
Rated HP - \* - HP  
Run Time 24 hr/day  
MFG/Comment - \* -

### Electric Motor Parameters

Rated Full Load AMPS - \* -  
Rated Full Load RPM - \* -  
Synchronous RPM 1200  
Voltage - \* -  
Hertz 60  
Phase 3  
Power Consumption 5  
Power Demand 8 \$/KW

### Tubulars

Tubing OD 3.500 in  
Casing OD 7.000 in  
Average Joint Length 31.700 ft  
Anchor Depth - \* - ft  
Kelly Bushing 21.00 ft

### Pump

Plunger Diameter - \* - in  
Pump Intake Depth 4862.00 ft  
\*\*Total Rod Length < Pump Depth

### Polished Rod

Polished Rod Diameter - \* - in

### Rod String

	Top Taper	Taper 2	Taper 3	Taper 4	Taper 5	Taper 6
Rod Type	- * -	- * -	- * -	- * -	- * -	- * -
Rod Length	- * -	- * -	- * -	- * -	- * -	- * - ft
Rod Diameter	- * -	- * -	- * -	- * -	- * -	- * - in
Rod Weight	0.0	0.0	0.0	0.0	0.0	0.0 lb

Total Rod Length 0  
Total Rod Weight 0.00

Damp Up 0.04862  
Damp Down 0.04862

### Conditions

#### Pressure

Static BHP 587.8 psi (g)  
Static BHP Method Acoustic  
Static BHP Date 09/06/2017

Producing BHP - \* - psi (g)  
Producing BHP Method - \* -  
Producing BHP Date - \* -  
Formation Depth 5345.00 ft

#### Surface Producing Pressures

Tubing Pressure - \* - psi (g)  
Casing Pressure 148.4 psi (g)

#### Casing Pressure Buildup

Change in Pressure 0.2 psi  
Over Change in Time 1.50 min

#### Production

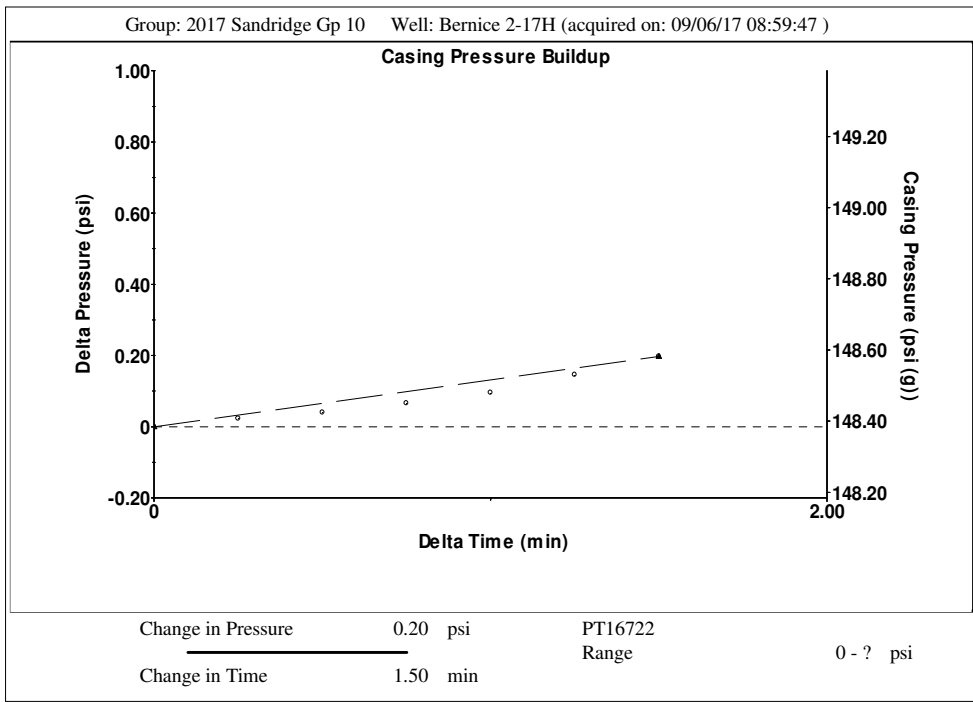
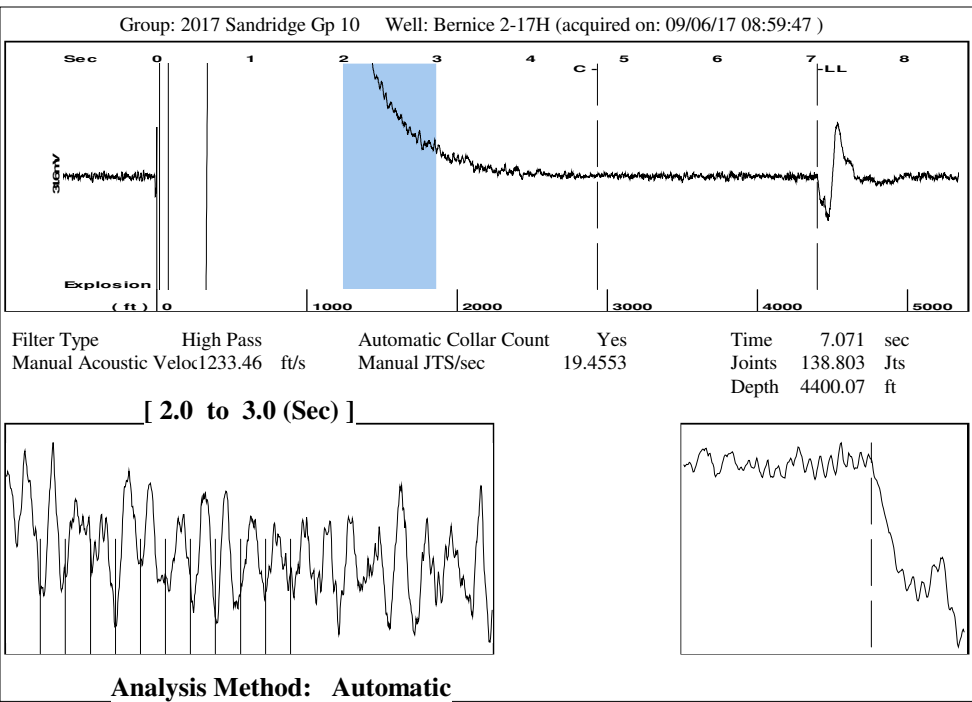
Oil Production 0 BBL/D  
Water Production 1 BBL/D  
Gas Production - \* - Mscf/D  
Production Date - \* -

#### Temperatures

Surface Temperature 70 deg F  
Bottomhole Temperature 150 deg F

#### Fluid Properties

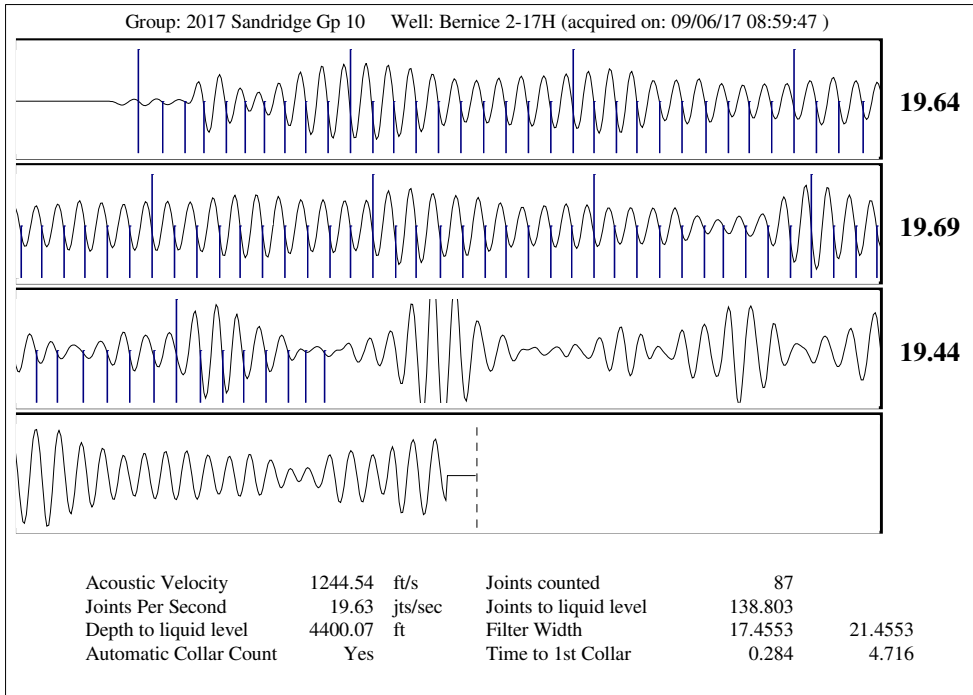
Oil API 40 deg.API  
Water Specific Gravity 1.05 Sp.Gr.H2O



Group: 2017 Sandridge Gp 10 Well: Bernice 2-17H (acquired on: 09/06/17 08:59:47)

Production		Potential		Casing Pressure		
Oil	0	- * -	BBL/D	148.4	psi (g)	
Water	1	- * -	BBL/D	0.2	psi	
Gas	- * -	- * -	Mscf/D	1.50	min	
IPR Method		Vogel		Gas/Liquid Interface Pressure	167.7 psi (g)	
PBHP/SBHP		- * -		Liquid Level Depth	4400.07 ft	
Production Efficiency		0.0		Tubing Intake Depth	4862.00 ft	
Oil	40 deg.API			Formation Depth	5345.00 ft	
Water	1.05 Sp.Gr.H2O					
Gas	0.74 Sp.Gr.AIR					
Acoustic Velocity	1244.54 ft/s					

Bernice 2-17H



Conservation Division  
District Office No. 2  
3450 N. Rock Road  
Building 600, Suite 601  
Wichita, KS 67226



Phone: 316-337-7400  
Fax: 316-630-4005  
<http://kcc.ks.gov/>

Pat Apple, Chairman  
Shari Feist Albrecht, Commissioner  
Jay Scott Emler, Commissioner

Sam Brownback, Governor

September 20, 2017

Laci Bevans  
SandRidge Exploration and Production LLC  
123 ROBERT S. KERR AVE  
OKLAHOMA CITY, OK 73102-6406

Re: Temporary Abandonment  
API 15-077-21810-01-00  
BERNICE 2-17H  
SW/4 Sec.17-35S-07W  
Harper County, Kansas

Dear Laci Bevans:

"Your temporary abandonment (TA) application for the well listed above has been approved. In accordance with K.A.R. 82-3-111 the TA status of this well will expire 09/20/2018.

- \* If you return this well to service or plug it, please notify the District Office.
- \* If you sell this well you are required to file a Transfer of Operator form, T-1.
- \* If the well will remain temporarily abandoned, you must submit a new TA application, CP-111, before 09/20/2018.

You may contact me at the number above if you have questions.

Very truly yours,

Steve VanGieson"