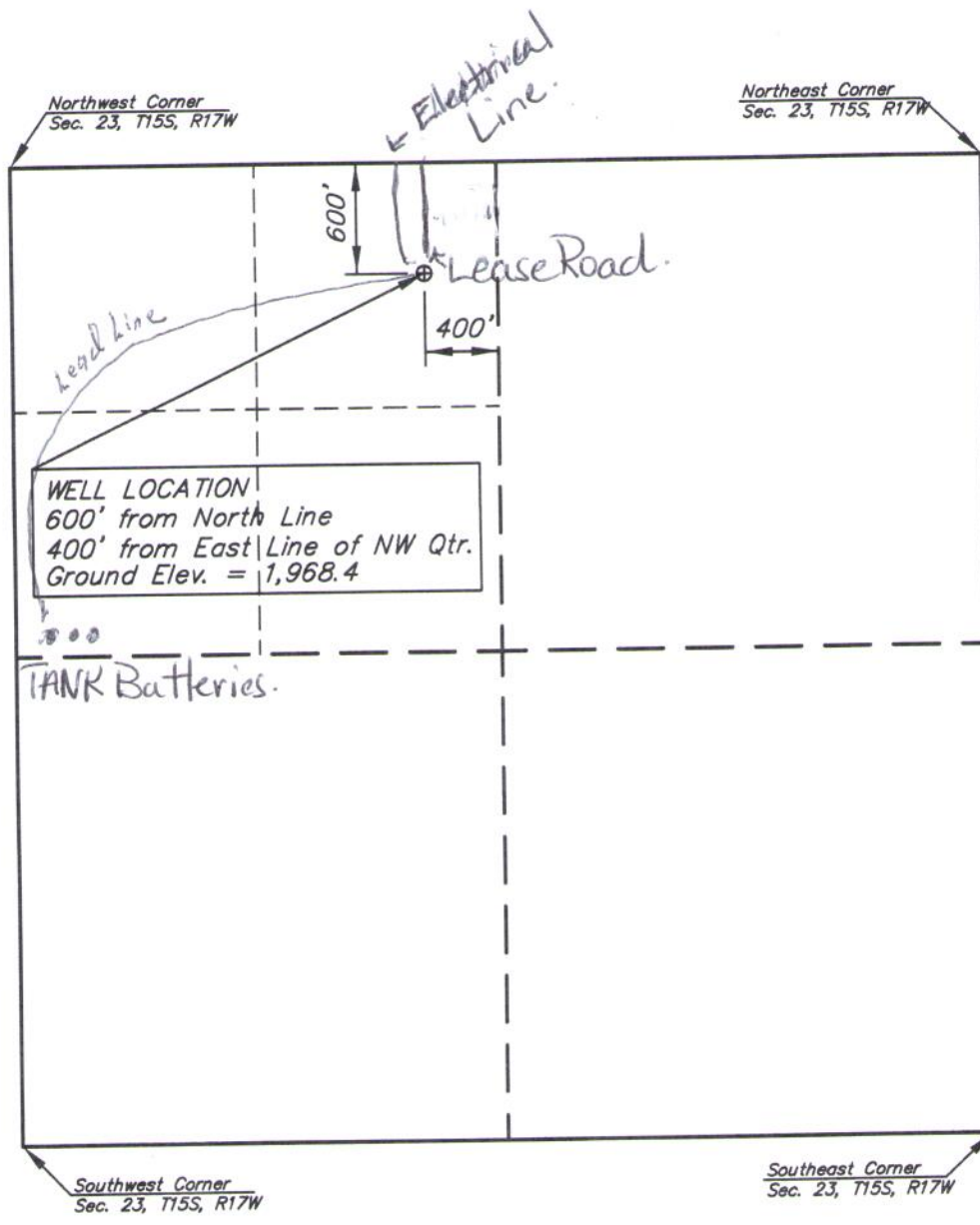


OIL WELL LOCATION

NE QTR. OF THE NW QTR. SECTION 23, T15S, R17W
ELLIS COUNTY, KANSAS



SCALE:
1"=1000'

**RUDER ENGINEERING
& SURVEYING, LLC**

1376 Butterfield Trail Rd.
Hays, Kansas 67601
785-259-1382

Well Staked on July 29, 2017
For Habit Petroleum