

JERRY GREEN

CONSULTING GEOLOGIST

P.O. BOX 87
SCHOENCHEN, KS 67667
PHONE: 785-625-5155

GEOLOGIST'S REPORT

DRILLING TIME AND SAMPLE LOG

COMPANY JOHN C. GINTHER OIL LLC

ELEVATIONS

LEASE SCHAEFER#7

K8 2038

FIELD EXPERIMENT SE

DF

LOCATION NE-NE-NW-SE

GL 2033

SEC 17 TWP 14S RGE 18W

Measurements Are All From

COUNTY ELLIS STATE KS

CASING SURFACE @ 598

CONTRACTOR WHITE KNIGHT DRLG

PRODUCTION ELECTRICAL SURVEYS

SPUD 7-13-17 COMP 7-18-17

RTD 3737 LTD 3738

MUD UP 2900 TYPE MUD CHEM

DIL/ND MI

SAMPLES SAVED FROM 2900

TO TD

DRILLING TIME KEPT FROM 2900

TO TD

SAMPLES EXAMINED FROM 2900

TO TD

GEOLOGICAL SUPERVISION FROM 2900

TO TD

GEOLOGIST ON WELL 2900

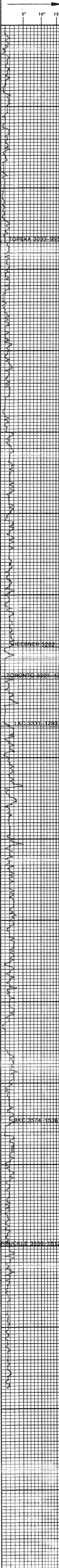
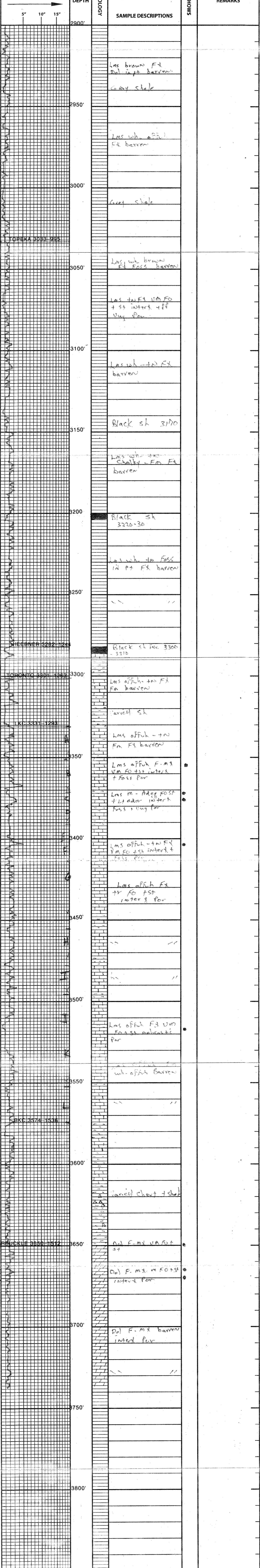
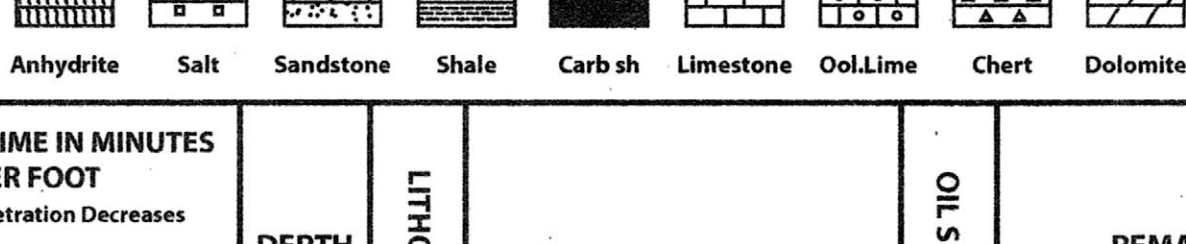
FORMATION TOPS LOG

SAMPLES

ANHY		
TOPEKA	3030-992	3033-995
HEEBNER	3280-1242	3282-1244
TORONTO	3300-1262	3301-1263
LKC	3330-1292	3331-1293
BKC	3574-1535	3574-1536
ARBUCKE	3650-1514	3650-1512

REMARKS: All parties involved recommended that pipe be set to test this well further. respectfully submitted

LEGEND



TOPEKA 3033-995

HEEBNER 3282-1244

TORONTO 3301-1263

LKC 3331-1293

BKC 3574-1536

ARBUCKE 3650-1512