

Geologic Report  
**Aaron L. Young**

Drilling Time and Sample Log

**Scale 1:240 (5"=100') Imperial  
Measured Depth Log**

**Well Name:** LaFon Trust B #1  
**API:** 15-135-25949  
**Location:** Section 17 - T16S - R24W  
**License Number:** 5123  
**Spud Date:** 04 / 28 / 2017  
**Surface Coordinates:** 2135' FNL and 1255' FEL  
Approx. NW - SW - SE - NE  
**Region:** Ness Co., KS  
**Drilling Completed:** 05 / 6 / 2017

**Bottom Hole  
Coordinates:**  
**Ground Elevation (ft):** 2500'      **K.B. Elevation (ft):** 2507'  
**Logged Interval (ft):** 3700'      **To:** 4600'      **Total Depth (ft):** 4600'  
**Formation:** Mississippian  
**Type of Drilling Fluid:** Chemical - Mud-Co

Printed by MUD.LOG from WellSight Systems 1-800-447-1534 [www.WellSight.com](http://www.WellSight.com)

**OPERATOR**

**Company:** Pickrell Drilling Company, Inc.  
**Address:** 100 S Main, Ste 505  
Wichita, KS 67202

**GEOLOGIST**

**Name:** Aaron L. Young, M. S.  
**Company:** Pickrell Drilling Company, Inc.  
**Address:** 100 S Main Ste 505  
Wichita, KS 67202

**General Info**

**CONTRACTOR:** Pickrell Drilling, Rig #10

**BIT RECORD:**

| No. | Size   | Make | Jets     | Out   | Feet  | Hours |
|-----|--------|------|----------|-------|-------|-------|
| 1   | 12-1/4 | RR   | 16-16-16 | 210'  | 203'  | 3.5   |
| 2   | 7-7/8  | JZ   | 16-16-16 | 4600' | 4397' | 135.5 |

**SURVEYS:** 210'-.5, 717'-1, 1248'-1, 1717'-1, 2310'-.75, 2810'-.75, 4505'-.5, 4600'-1

**GENERAL DRILLING AND PUMP INFORMATION:**

Drilling with 35,000 - 42,000 lbs. on bit and approx 65 RPM.  
Running 8 stands of collars; 458'  
Pumping 50-57 strokes/min @ approx 500-600 psi at standpipe.

## Daily Status

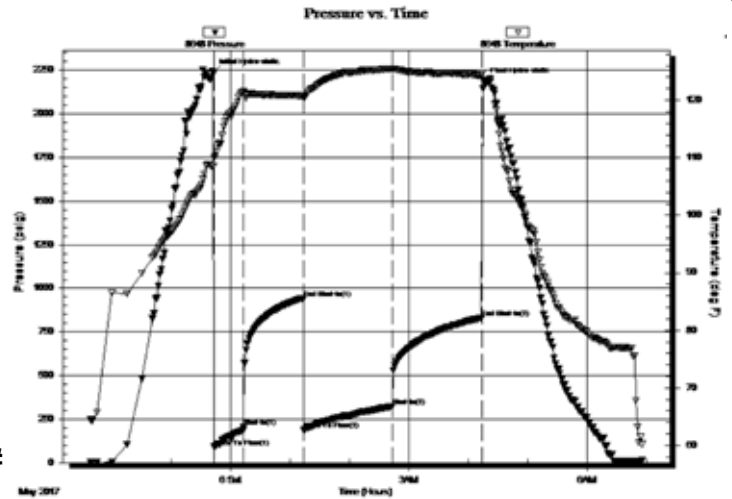
04/28/17 - Spud @ 12:00am, Depth 210', ran 5 jts of new 8 5/8" 28# surface casing set @ 207', cemented w/ 150 sx. Common, 2% gel, 3% CC, PD @ 9:00am. cem did circ.  
 04/29/17 - Drilling, @ 910'  
 04/30/17 - Drilling, @ 1998'  
 05/01/17 - Drilling, @ 2716'  
 05/02/17 - Drilling, @ 3188'  
 05/03/17 - Drilling, @ 3700'  
 05/04/17 - Drilling, @ 4147'  
 05/05/17 - CFS @ 4424' (Ft. Scott)  
 05/06/17 - DST #1 4465' - 4505', TD well @ 4600' RTD, Ran 118 jts of use 4 1/2" 10.5# prod csg. set @ 4598', cem w/ 145 sx EA-2, 30 sx cem in RH.

**DST #1 MISSISSIPPI 4465' - 4505'**  
**30"-60"-90"-90"**

IF: Packer leaked at open, set more weight on and was ok / built to BOB in 6 min  
 ISI: Surface blow back  
 FF: Built to BOB in 19 min  
 FSI: Blow back built to 1"

Rec'd: 77' CGO (10% G, 90% O), 186' OM (40% O, 60% M), 310' OCMW (5% O, 20% M, 75% W)

SIP: 942-832# FP: 90-203#, 189-323# HP: 2233#-2183#



## ROCK TYPES

|  |       |
|--|-------|
|  | Anhy  |
|  | Bent  |
|  | Brec  |
|  | Cht   |
|  | Clyst |
|  | Coal  |
|  | Congl |
|  | Dol   |

|  |       |
|--|-------|
|  | Gyp   |
|  | Igne  |
|  | Lmst  |
|  | Meta  |
|  | Mrlst |
|  | Salt  |
|  | Shale |
|  | Shcol |

|  |         |
|--|---------|
|  | Shgy    |
|  | Sltst   |
|  | Ss      |
|  | Till    |
|  | Carb sh |
|  | Dol     |
|  | Dtd     |
|  | Gry sh  |

|  |          |
|--|----------|
|  | Sandylms |
|  | Shale    |
|  | Sltstn   |
|  | Shlyslts |
|  | Slttysh  |
|  | Lms      |

### ACCESSORIES

#### MINERAL

- Anhy
- Arggrn
- Arg
- Bent
- Bit
- Breclfrag
- Calc
- Carb
- Chtdk
- Chtlt
- Dol
- Feldspar
- Ferrpel
- Ferr
- Glau
- Gyp
- Hvymin
- Kaol
- Marl
- Minxl
- Nodule
- Phos
- Pyr

- Salt
- Sandy
- Silt
- Sil
- Sulphur
- Tuff
- Chlorite
- Dol
- Sand
- Sltly

#### FOSSIL

- Algae
- Amph
- Belm
- Bioclst
- Brach
- Bryozoa
- Cephal
- Coral
- Crin
- Echin
- Fish
- Foram

- Fossil
- Gastro
- Oolite
- Ostra
- Pelec
- Pellet
- Pisolite
- Plant
- Strom
- Fuss
- Oomold

#### STRINGER

- Anhy
- Arg
- Bent
- Coal
- Dol
- Gyp
- Ls
- Mrst
- Sltstrg
- Ssstrg
- Carbsh

- Clystn
- Dol
- Grysh
- Gryslt
- Lms
- Sandylms
- Sh
- Sltstn

#### TEXTURE

- Boundst
- Chalky
- Cryxln
- Earthy
- Finexln
- Graint
- Lithogr
- Microxln
- Mudst
- Packst
- Wackest

### OTHER SYMBOLS

#### POROSITY TYPE

- Earthy
- Fenest
- Fracture
- Inter
- Moldic
- Organic
- Pinpoint
- Vuggy

#### SORTING

- Well
- Moderate
- Poor

#### ROUNDING

- Rounded
- Subrnd
- Subang
- Angular

#### OIL SHOWS

- Even
- Spotted
- Ques
- Dead
- Gas show

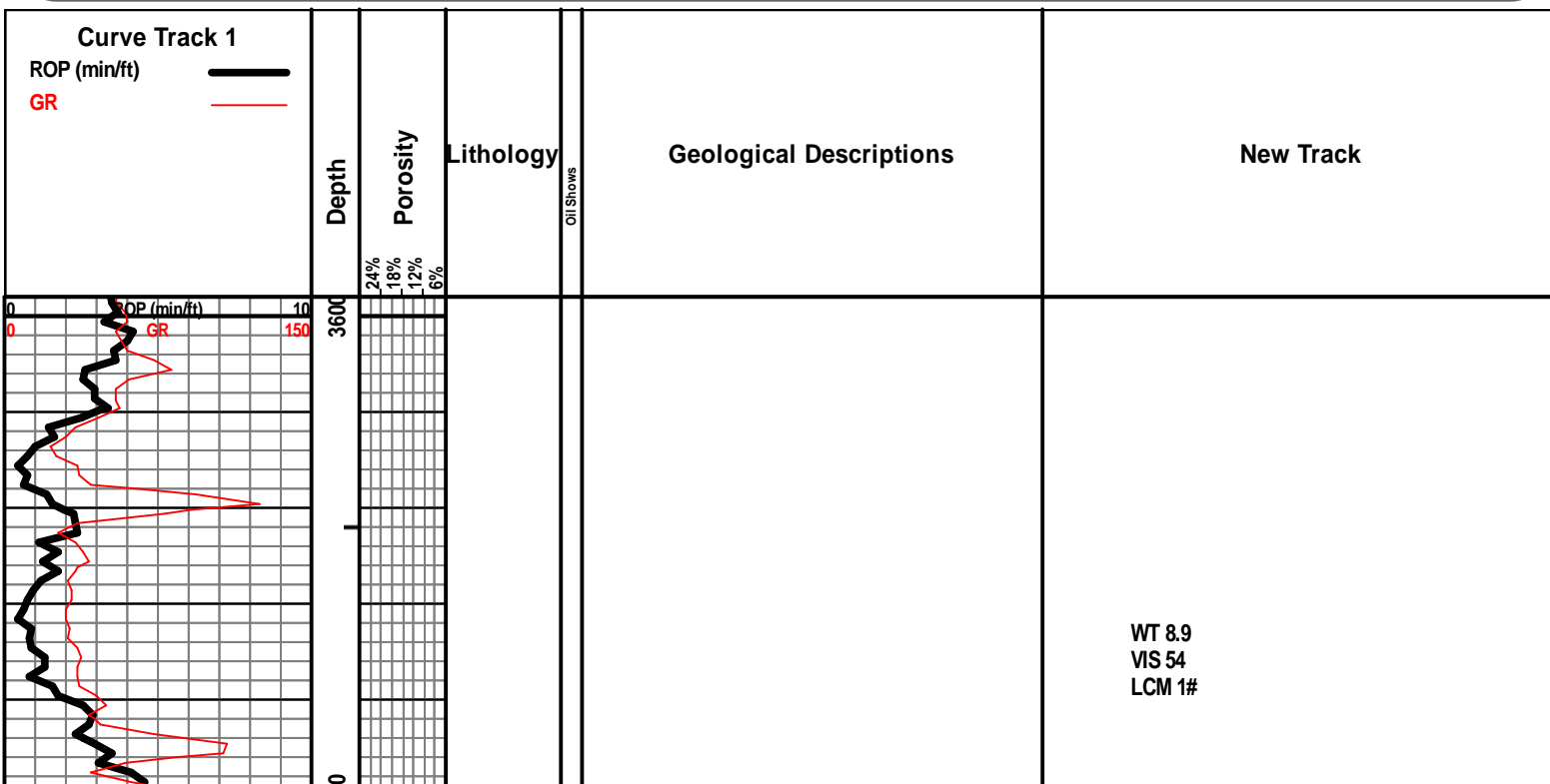
#### INTERVALS

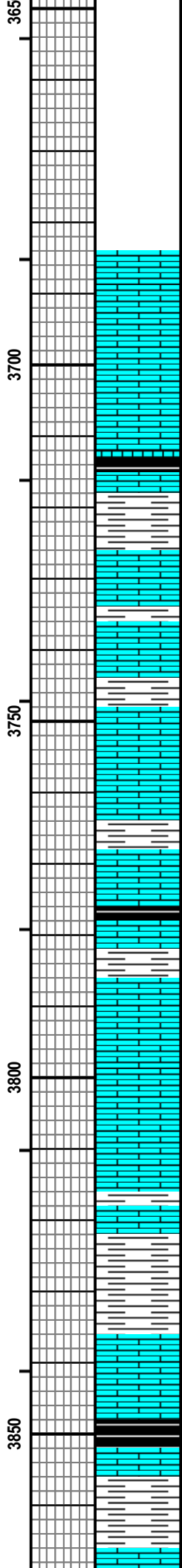
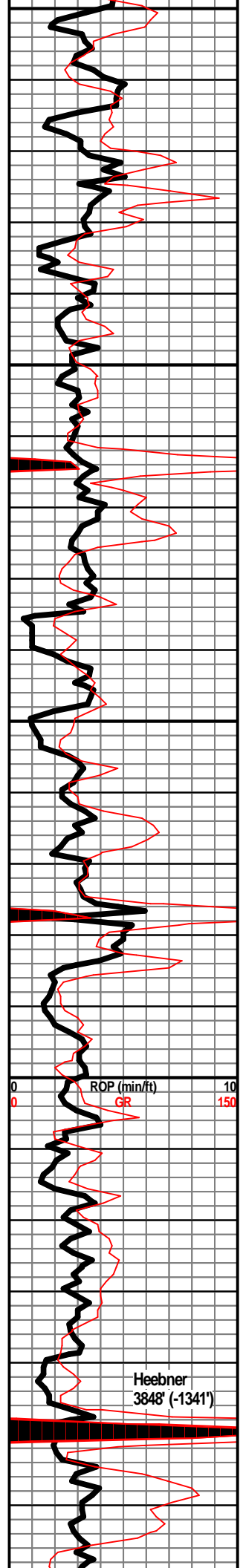
- Core
- Dst

- Dst

#### EVENTS

- Rft
- Sidewall
- Conn





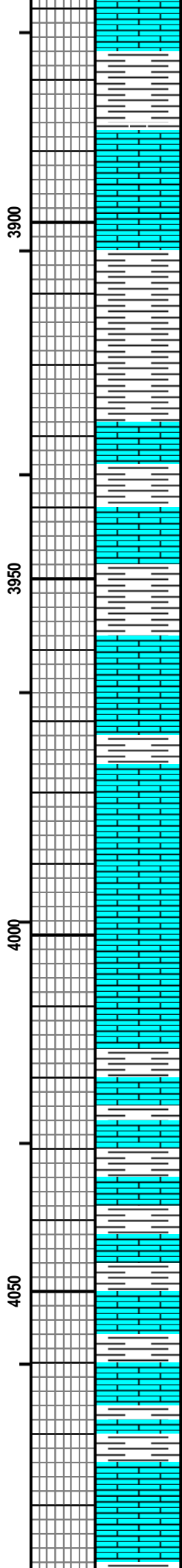
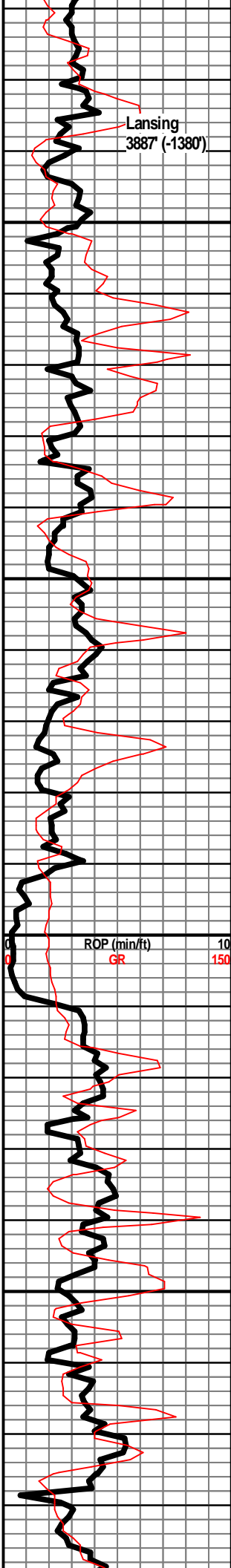
LS - TAN / LT GY, F XLN, DNS, FOSS  
 LS - TAN / CRM, F XLN, MOD DNS / DNS, FOSS IN PT  
 SH - BLK, CARB, W/ LS - TAN / GY, VF / F XLN, MOD DNS / DNS, ABUND FOSS  
 SH - RD / GRN / GY, W/ LS - WHT / CRM, VF XLN, SUBCHKY / CHKY  
 LS - CRM / TAN, LT BRN IN PT, F XLN, MOD DNS / DNS, FOSS, W/ SH - LT GRN  
 LS - CRM / TAN, WHT IN PT, VF XLN, CHKY / SUBCHKY  
 SH - GRN, W/ LS - TAN, VF / F XLN, MOD DNS / DNS, FOSS, PYRITIC IN PT  
 SH - GY, W/ LS - CRM, F / M XLN, DNS, FOSS IN PT  
 SH - BLK, SLI CARB, W/ LS - TAN / GY, F XLN, DNS, ABUND FOSS  
 SH - GY / GRN, W/ LS - CRM, VF / F XLN, SUBCHKY  
 LS - CRM / TAN, F XLN, MOD DNS, ABUND FOSS, LRG FUSULINIDS  
 LS - TAN / GY, VF / F XLN, MOD DNS, ABUND FOSS  
 SH - GY, W/ LS - TAN, VF / F XLN, MOD DNS, FOSS  
 SH - GY, SLTY IN PT  
 SH - RD / GRN, W/ LS - BRN, F XLN, DNS, FOSS  
 SH - BLK, CARB, W/ LS - CRM, VF / F XLN, SUBCHKY, FOSS, W/ SH - RD / GRN  
 LS - CRM / TAN, VF / F XLN, MOD DNS / SUBCHKY, FOSS IN PT, W/ SH - RD / GRN

WT 9.0  
 VIS 56  
 LCM 1#  
  
 WT 8.9  
 VIS 59  
 LCM 1#  
  
 WT 8.8  
 VIS 55  
 LCM 1#  
  
 WT 8.8  
 VIS 55  
 LCM 1#  
  
 WT 8.8  
 VIS 53  
 LCM 1#  
  
 WT 9.0  
 VIS 56  
 LCM 1#

Heebner  
3848' (-1341')

ROP (min/ft)  
GR

0 10  
0 150



LS - WHT, VF XLN, V CHKY / CHKY

SH - GY, W/ LS - CRM, F XLN, MOD DNS / DNS, FOSS

LS - CRM, F XLN, DNS / MOD DNS, SLI FOSS, NS, NO ODOR

LS - CRM, VF / F XLN, SUBCHKY, W/ SH - GY

SH - DK GY / BLK, V SLI CARB

SH - GRN / GY

SH - GRN / RD-ORNG

LS - CRM, VF / F XLN, MOD DNS / DNS

SH - MAR / GRN / GY, W/ LS - CRM, VF / F XLN, SUBCHKY / MOD DNS

SH - LT GY / DK GY / BLK IN PT

LS - CRM, VF / F XLN, SUBCHKY / MOD DNS IN PT

LS - TAN / GY, F XLN, MOD DNS, FOSS IN PT

LS - CRM / TAN, VF / FXLN, SUBCHKY / CHKY IN PT

LS - CRM / TAN, VF / F XLN, MOD DNS / SUBCHKY, FOSS

LS - CRM / TAN, F XLN, OOL, P / F OOLMOLDIC POR, FOSS, NS, NO ODOR

LS - CRM / TAN, F XLN, MOD DNS / DNS, FOSS IN PT

SH - GRN / GY, RD IN PT

SH - DK GY / LT GY

SH - GY, W/ LS - CRM, VF / F XLN, MOD DNS, SUBCHKY IN PT

SH - GY, V SLTY, W/ LS - CRM / TAN, VF / F XLN, FOSS IN PT,

LS - CRM, F XLN, MOD DNS / DNS, FOSS

SH - RD / GRN / GY, W/ LS - CRM, VF / F XLN, SUBCHKY / CHKY IN PT

LS - CRM / WHT, VF XLN, CHKY / SUBCHKY, STYLOLITIZED IN PT

VIS 50  
LCM 1#

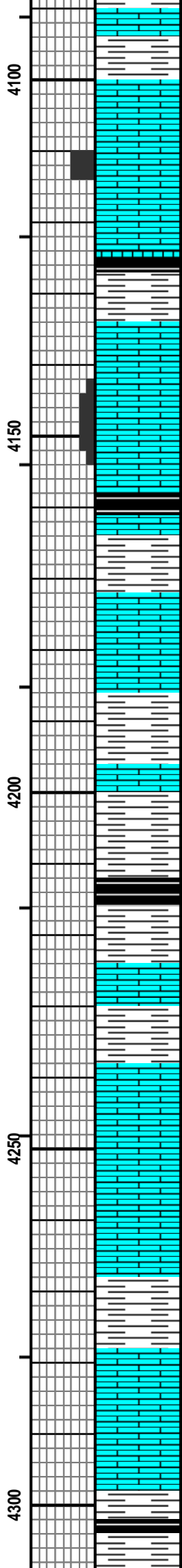
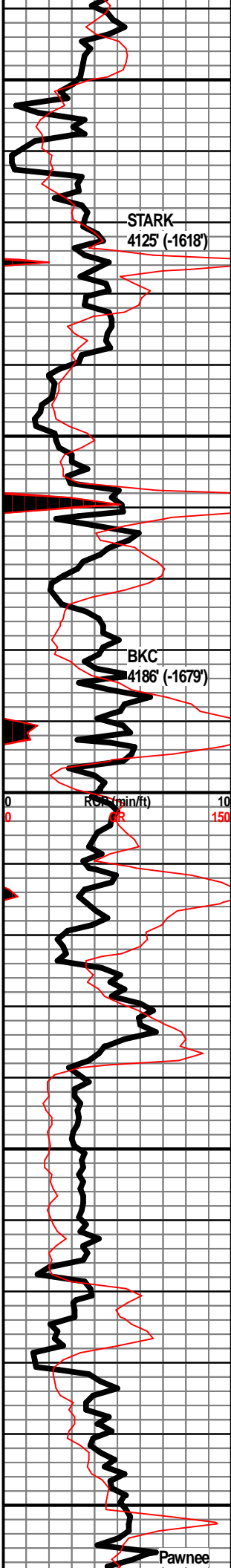
WT 9.2  
VIS 53  
LCM 1#

WT 9.2  
VIS 55  
LCM 1#

WT 9.3  
VIS 57  
LCM 1#

WT 9.4  
VIS 57  
LCM 1#

REDUCED MUD  
PUMP TO 50-52  
STROKES / MIN TO  
IMPROVE SAMPLES



LS - CRM / TAN, F / M XLN, DNS, SLI FOSS, W/ SH - RD / GRN

LS - CRM / TAN, F XLN, OOL, FOSS, F OOLMOLDIC POR, VSSFO IN FEW PIECES, SLI OIL SHEEN, MOST POR BARREN, SLI MINERAL FLUOR

LS - CRM / WHT, VF XLN, SUBCHKY / CHKY

SH - BLK, CARB

SH - GY

LS - CRM / TAN, F XLN, OOL IN PT, P / F OOLMOLDIC POR, NS, NO ODOR

LS - CRM, VF / F XLN, MOD DNS / DNS

SH - BLK, CARB

SH - GY, W/ LS - BRN, F XLN, DNS, FOSS

LS - CRM, F XLN, MOD DNS / DNS, FOSS

SH - GRN / GY

SH - GRN / RD, W/ LS - TAN / GY, F XLN, MOD DNS / DNS

SH - GRN, RD, GY

SH - BLK, V SLI CARB

LS - CRM / WHT, VF XLN, CHKY / SUBCHKY, W/ SH - GRN / RD / GY

LS - TAN, F XLN, MOD DNS / DNS

LS - CRM / TAN, VF / F XLN, MOD DNS / DNS, SUBCHKY IN PT

LS - CRM, VF / F XLN, MOD DNS

LS - CRM, VF / F XLN, MOD DNS / SUBCHKY, CHKY IN PT, W/ SH - GY / GRN / RD

LS - CRM / TAN, F XLN, MOD DNS / DNS, SLI FOSS IN PT

LS - TAN, F XLN, DNS, SLI FOSS

SH - GY / GRN / RD

SH -DK GY / BLK, V SLI CARB

WT 9.3  
VIS 60  
LCM 1#

WT 9.3  
VIS 60  
LCM 1#

WT 9.3  
VIS 63  
LCM 2#

WT 9.3  
VIS 58  
LCM 2#

WT 9.3  
VIS 58  
LCM 2#

WT 9.3  
VIS 58  
LCM 2#

WT 9.4  
VIS 58  
LCM 1#

WT 9.4  
VIS 54  
LCM 1#

4310' (-1803')

LS - TAN / GY, F XLN, MOD DNS / DNS, SLI FOSS

LS - CRM / TAN, F XLN, DNS

LS - TAN / GY, VF / F XLN, MOD DNS / DNS, FOSS

WT 9.4  
VIS 58  
LCM 1#

LS - TAN / LT GY, VF / F XLN, MOD DNS / DNS

WT 9.4  
VIS 51  
LCM 1#

SH - GY

SH - CARB

LS - TAN / GY, F XLN, V DNS, ABUND FOSS, NO VIS POR, NS, NO ODOR, MINERAL FLUOR

WT 9.2  
VIS 52  
LCM 1#

SH - GY / GRN / RD

LS - TAN / GY, VF / F XLN, MOD DNS / SUBCHKY, FOSS, NO VIS POR, NS, NO ODOR, MINERAL FLUOR

WT 9.3  
VIS 51  
LCM 1#

SH - BLK, CARB

LS - TAN / GY, VF / F XLN, ABUND FOSS, P / F INTRAMOLDIC + INTXLN POR, VSSFO, ABUND OIL SHEEN, SLI ODOR, G YEL-GRN FLUOR

WT 9.5  
VIS 53  
LCM 2#

LS - TAN, VF / F XLN, MOD DNS, ABUND FOSS, NO VIS POR, NS, NO ODOR

SH - BLK, CARB

WT 9.4  
VIS 50  
LCM 1#

SH - RD / GRN / GY

LS - TAN / GY, VF / F XLN, MOD DNS / DNS, FOSS

DST #1  
MISSISSIPPI  
4465' - 4505'  
30"-60"-90"-90"

SH - GY / GRN / RD / MAR

SH - GY

IF: Packer leaked at open, set more weight on and was ok / built to BOB in 6 min  
ISI: Surface blow back  
FF: Built to BOB in 19 min  
FSI: Blow back built to 1"

SH - GY / GRN / MAR / RD-ORNG / RD

DOLO - CRM, VF XLN, SUBCHKY / CHKY, NO VIS POR, NS, NO ODOR

Rec'd: 77' CGO (10% G, 90% O), 186' OM (40% O, 60% M), 310' OCMW (5% O, 20% M, 75% W)

DOLO - CRM, VF / F XLN, SUCROSIC, F / G INTXLN + VUG POR, G FOSS MOLDIC POR, VGSFO, LT BRN OIL, SHO OF GAS, G YEL-GRN FLUOR, F ODOR

IH: 2233#

DOLO - CRM / TAN, F XLN, ABUND FOSS, F / G MOLDIC + INTXLN POR, GSFO, F ODOR, G YEL-GRN FLUOR

IF: 90-203#

WT 9.2

ISI: 942#

VIS 55

FF: 189-323#

LCM 2#

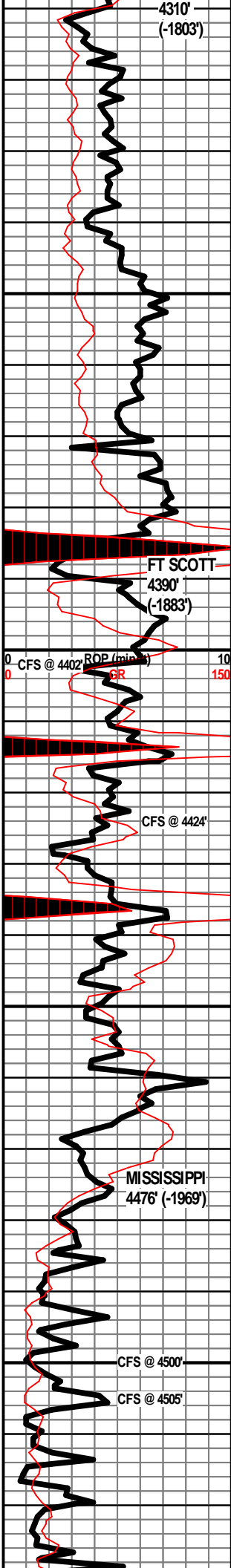
FSI: 832#

FH: 2183#

DOLO - CRM / TAN / LT BRN, FOSS, F / G MOLDIC + VUG POR, GSFO, LT BRN OIL, G SHO GAS, G ODOR, G YEL-GRN FLUOR

DOLO - CRM, VF / F XLN, F INTXLN + VUG POR, NSFO, ABUND OIL SHEEN, F ODOR, G YEL-GRN FLUOR

DOLO - CRM, VF / F XLN, SUCROSIC IN PT, F / G INTXLN POR, NSFO, ABUND OIL SHEEN, SHO OF GAS, F ODOR, G YEL-GRN FLUOR

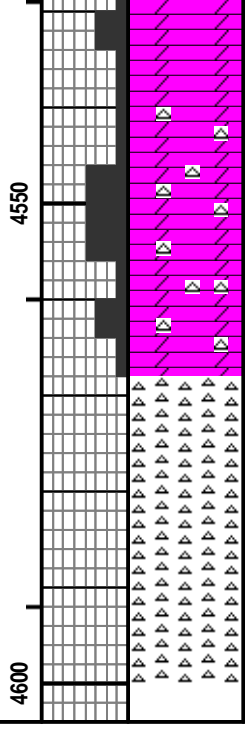
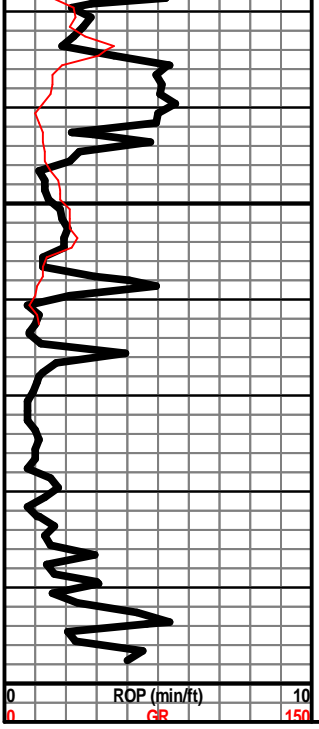


4350

4400

4450

4500



DOLO - CRM / TAN, VF / F XLN,

DOLO - WHT / TAN, F XLN, MOD DNS, V CHTY, WHT OPAQ  
FRSH CHT, F / G INTXLN POR, NS, NO ODOR

SAMPLE QUALITY VERY POOR, SAW FEW PIECES  
OF CHT - WHT / GY, FRSH, PRED OPAQ,  
TRANLUCNT IN PT, NO POR, NS, NO ODOR

RTD 4600'

DRILL TIME SLID  
UP 2' TO MATCH  
LOG

WT 9.2  
VIS 55  
LCM 1.5#