



**TRILOBITE
TESTING, INC.**

DRILL STEM TEST REPORT

Phillips Exploration Company L.C.

S4-13S-24W Trego Co Ks

211 Cedar Ridge CT
PO BOX 850
Andover KS, 67002+0850
ATTN: Pat Deenihan/ J.B. P

Wanker #1-4 SHR

Job Ticket: 63524

DST#: 3

Test Start: 2017.04.17 @ 10:19:00

GENERAL INFORMATION:

Formation: **Mississippi**

Deviated: No Whipstock: ft (KB)

Time Tool Opened: 12:09:30

Time Test Ended: 16:20:30

Test Type: Conventional Bottom Hole (Reset)

Tester: Spencer J. Staab

Unit No: 84

Interval: 4294.00 ft (KB) To 4343.00 ft (KB) (TVD)

Reference Elevations: 2492.00 ft (KB)

Total Depth: 4343.00 ft (KB) (TVD)

2487.00 ft (CF)

Hole Diameter: 7.88 inches Hole Condition: Fair

KB to GR/CF: 5.00 ft

Serial #: 8934

Inside

Press@RunDepth: 22.42 psig @ 4305.00 ft (KB)

Capacity: 8000.00 psig

Start Date: 2017.04.17

End Date:

2017.04.17

Last Calib.:

2017.04.17

Start Time: 10:19:05

End Time:

16:20:29

Time On Btm:

2017.04.17 @ 12:09:15

Time Off Btm:

2017.04.17 @ 14:42:15

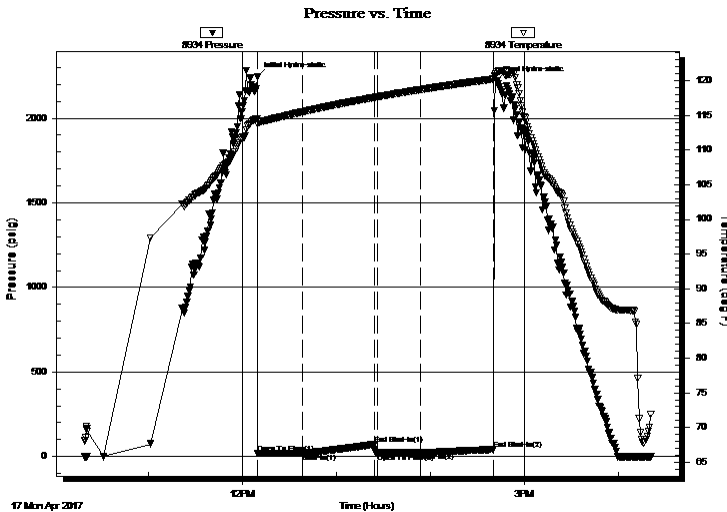
TEST COMMENT: 30-IF-Very Weak Blow ; Built from a surface blow to 1/2 inch

45-ISI-No Blow Back

30-FF-Few Bubbles; died

45-FSI-No Blow Back

PRESSURE SUMMARY



Time (Min.)	Pressure (psig)	Temp (deg F)	Annotation
0	2244.10	114.56	Initial Hydro-static
1	18.75	113.76	Open To Flow (1)
29	20.34	115.51	Shut-In(1)
75	71.34	117.60	End Shut-In(1)
77	21.06	117.66	Open To Flow (2)
105	22.42	118.72	Shut-In(2)
151	41.06	120.24	End Shut-In(2)
153	2224.44	121.24	Final Hydro-static

Recovery

Length (ft)	Description	Volume (bbl)
10.00	OCM 5% O 95%M	0.05

* Recovery from multiple tests

Gas Rates

Choke (inches)	Pressure (psig)	Gas Rate (Mcf/d)



TRILOBITE TESTING, INC.

DRILL STEM TEST REPORT

Phillips Exploration Company L.C.
 211 Cedar Ridge CT
 PO BOX 850
 Andover KS, 67002+0850
 ATTN: Pat Deenihan/ J.B. P

S4-13S-24W Trego Co Ks

Wanker #1-4 SHR

Job Ticket: 63524

DST#: 3

Test Start: 2017.04.17 @ 10:19:00

GENERAL INFORMATION:

Formation: **Mississippi**

Deviated: No Whipstock: ft (KB)

Time Tool Opened: 12:09:30

Time Test Ended: 16:20:30

Test Type: Conventional Bottom Hole (Reset)

Tester: Spencer J. Staab

Unit No: 84

Interval: 4294.00 ft (KB) To 4343.00 ft (KB) (TVD)

Total Depth: 4343.00 ft (KB) (TVD)

Hole Diameter: 7.88 inches Hole Condition: Fair

Reference Elevations: 2492.00 ft (KB)

2487.00 ft (CF)

KB to GR/CF: 5.00 ft

Serial #: 9120 Inside

Press@RunDepth: psig @ 4305.00 ft (KB)

Start Date: 2017.04.17

End Date: 2017.04.17

Start Time: 10:19:15

End Time: 16:20:30

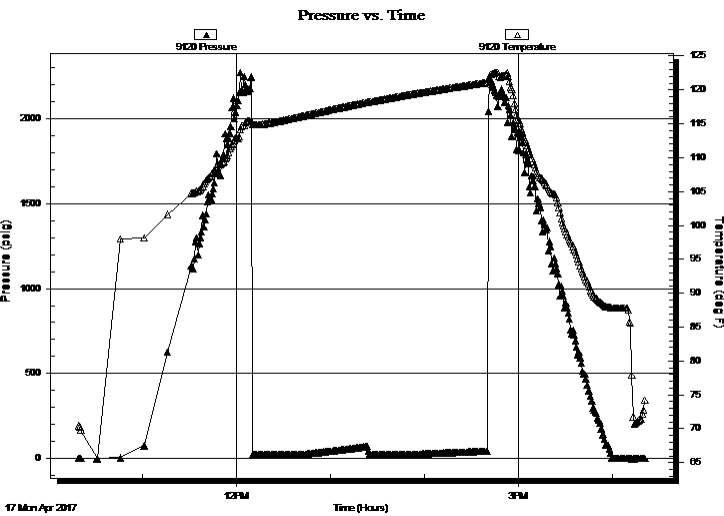
Capacity: 8000.00 psig

Last Calib.: 2017.04.17

Time On Btm:

Time Off Btm:

TEST COMMENT: 30-IF-Very Weak Blow ; Built from a surface blow to 1/2 inch
 45-ISI-No Blow Back
 30-FF-Few Bubbles; died
 45-FSI-No Blow Back



PRESSURE SUMMARY

Time (Min.)	Pressure (psig)	Temp (deg F)	Annotation

Recovery

Length (ft)	Description	Volume (bbl)
10.00	OCM 5% O 95%M	0.05

* Recovery from multiple tests

Gas Rates

Choke (inches)	Pressure (psig)	Gas Rate (Mcf/d)



**TRILOBITE
TESTING, INC.**

DRILL STEM TEST REPORT

FLUID SUMMARY

Phillips Exploration Company L.C.

S4-13S-24W Trego Co Ks

211 Cedar Ridge CT
PO BOX 850
Andover KS, 67002+0850
ATTN: Pat Deenihan/ J.B. P

Wanker #1-4 SHR

Job Ticket: 63524

DST#: 3

Test Start: 2017.04.17 @ 10:19:00

Mud and Cushion Information

Mud Type: Gel Chem

Mud Weight: 9.00 lb/gal

Viscosity: 56.00 sec/qt

Water Loss: 6.00 in³

Resistivity: ohm.m

Salinity: 2400.00 ppm

Filter Cake: inches

Cushion Type:

Cushion Length: ft

Cushion Volume: bbl

Gas Cushion Type:

Gas Cushion Pressure: psig

Oil API:

Water Salinity: deg API

ppm

Recovery Information

Recovery Table

Length ft	Description	Volume bbl
10.00	OCM 5% O 95%M	0.049

Total Length: 10.00 ft Total Volume: 0.049 bbl

Num Fluid Samples: 0

Num Gas Bombs: 0

Serial #:

Laboratory Name:

Laboratory Location:

Recovery Comments: 3# LCM

Serial #: 8934

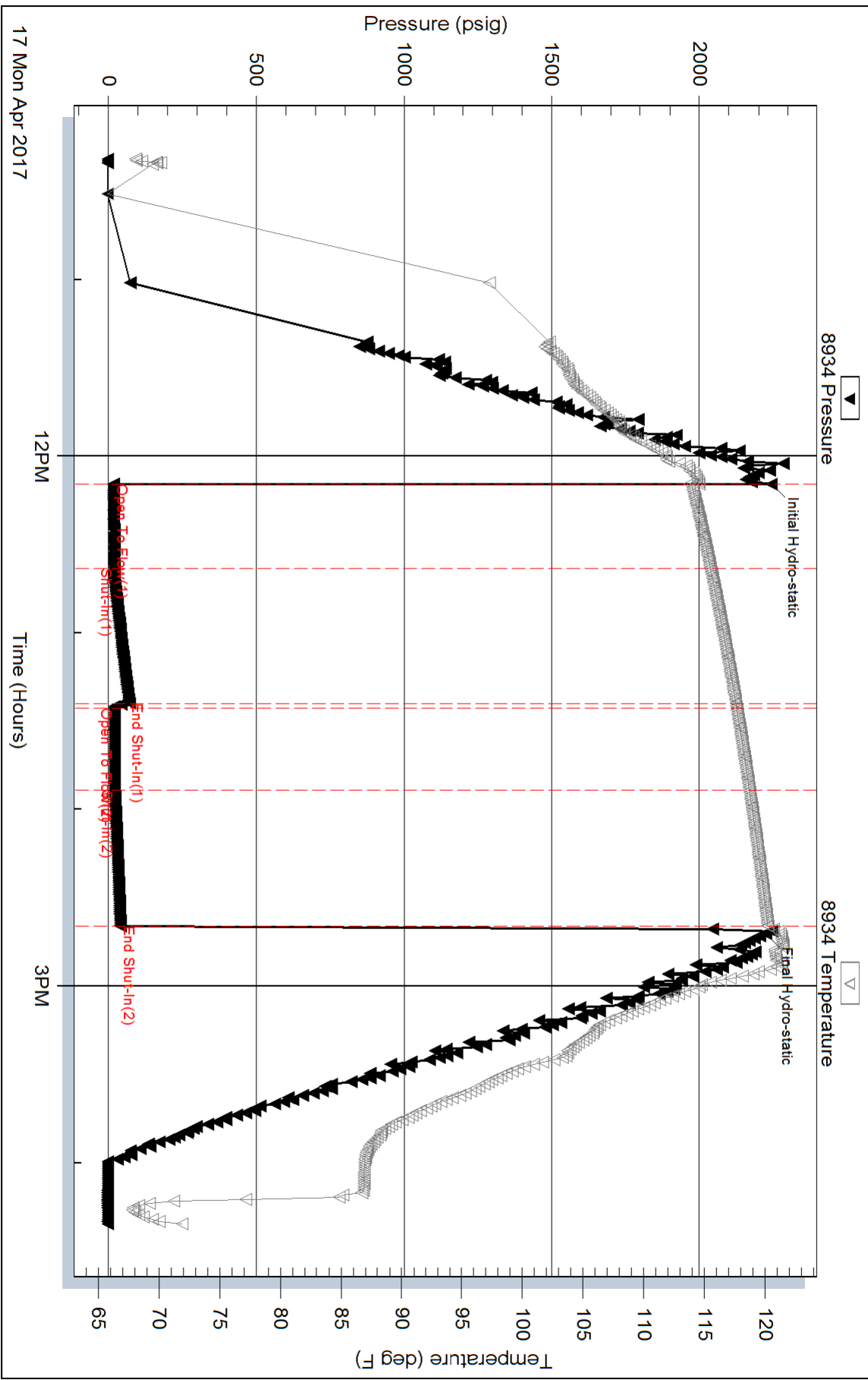
Inside

Phillips Exploration Company L.C.

Wanker #1-4 SHR

DST Test Number: 3

Pressure vs. Time



Triobite Testing, Inc

Ref. No: 63524

Printed: 2017.04.17 @ 16:59:50

Serial #: 9120

Inside

Phillips Exploration Company L.C.

Wanker #1-4 SHR

DST Test Number: 3

