



# Fall & Associates

State and Elevation Service

P.O. Box 222

Pretty Prairie, KS. 67570

785-243-7506

Date 8-23-17

Invoice Number 0822171

GREAT PLAINS ENERGY

1-30

Reynolds

Operator

Number

Farm Name

Graham-KS

30

9s

24w

1320  
2310'FSL ~~1320'~~FWL

County-State

S

T

R

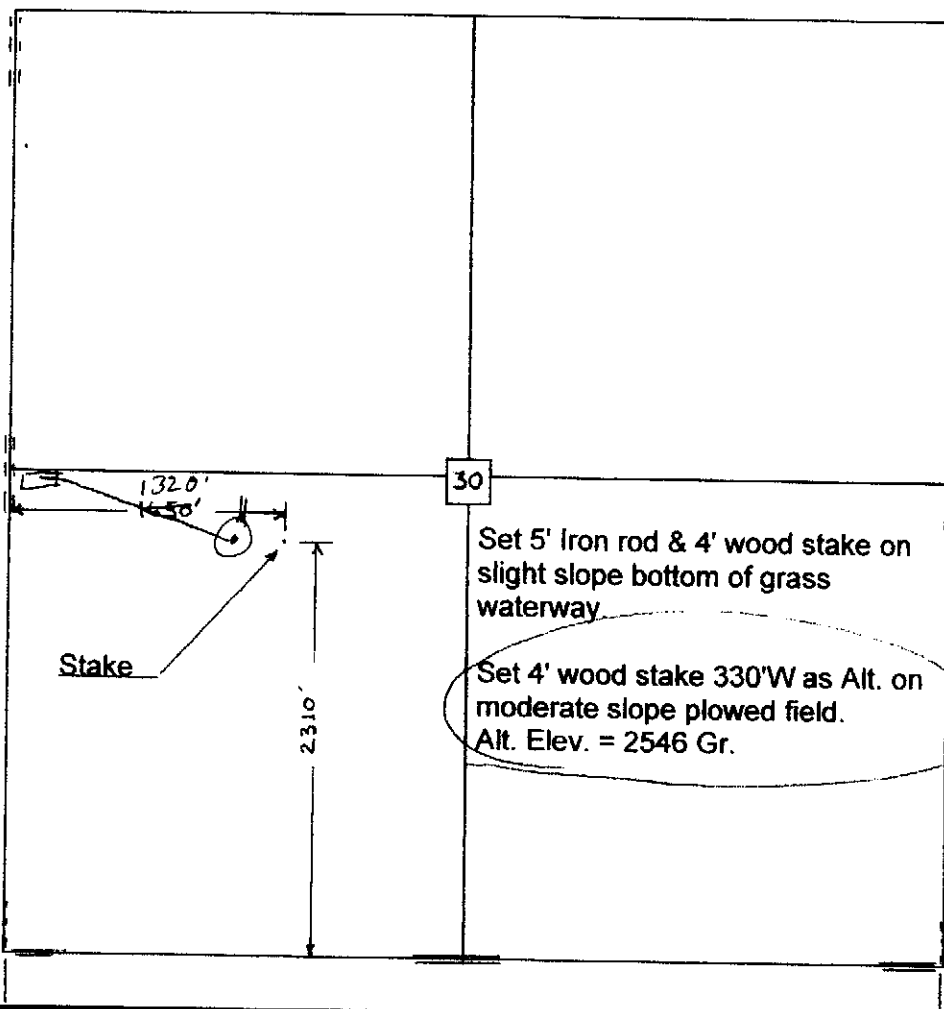
Location

Great Plains Energy  
6121 S 58th. Street  
Suite B  
Lincoln, NE 68516

Elevation 2546  
~~2532~~ Gr.

Ordered By: Dan

Scale 1"=1000'





**Fall & Associates**  
Stake and Elevation Service  
P.O. Box 222  
Pretty Prairie, KS. 67578  
785-243-7586

Date 8-23-17

Invoice Number 0822171

GREAT PLAINS ENERGY

1-30

Reynolds

Operator

Number

Farm Name

Graham-KS

30

9s

24w

1320  
2310'FSL ~~1000'~~FWL

County-State

S

T

R

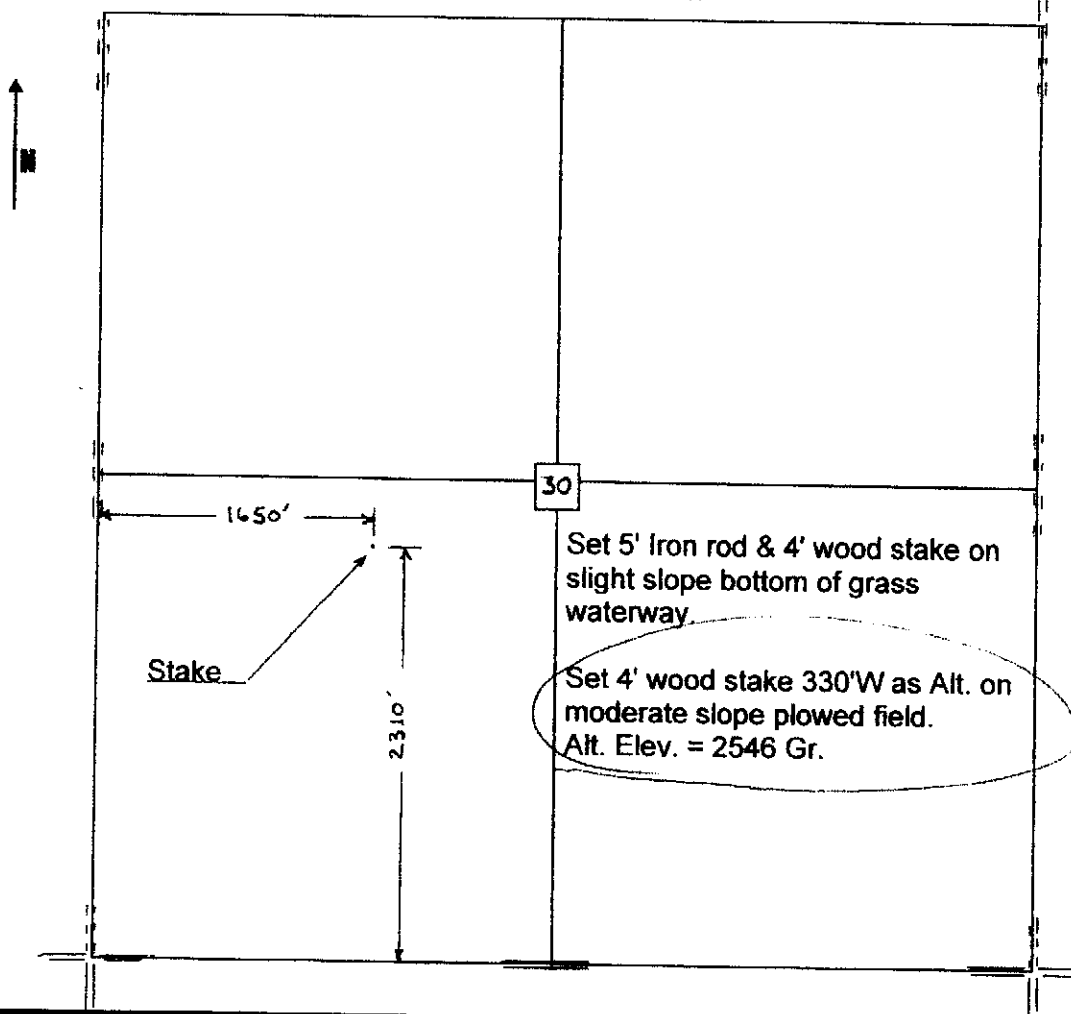
Location

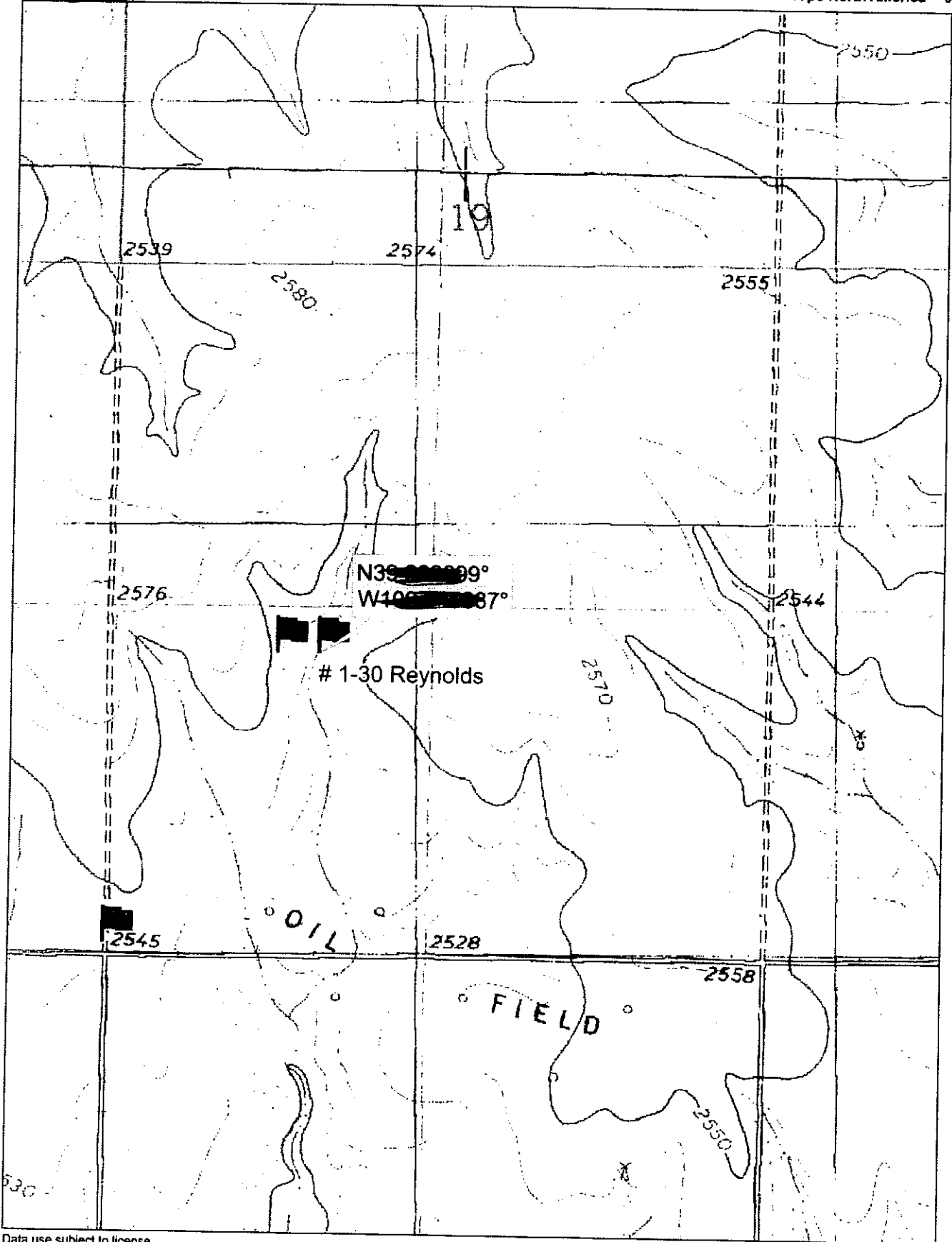
Great Plains Energy  
6121 S 58th. Street  
Suite B  
Lincoln, NE 68516

Elevation 2546  
~~2532~~ Gr.

Ordered By: Dan

Scale 1"=1000'





Data use subject to license.

© DeLorme. Topo North America™ 9.

www.delorme.com

