

# ADVANTAGE ELEVATIONS

OIL FIELD SURVEYORS

BOX 8604 - PRATT, KS 67124  
(620) 672-6491

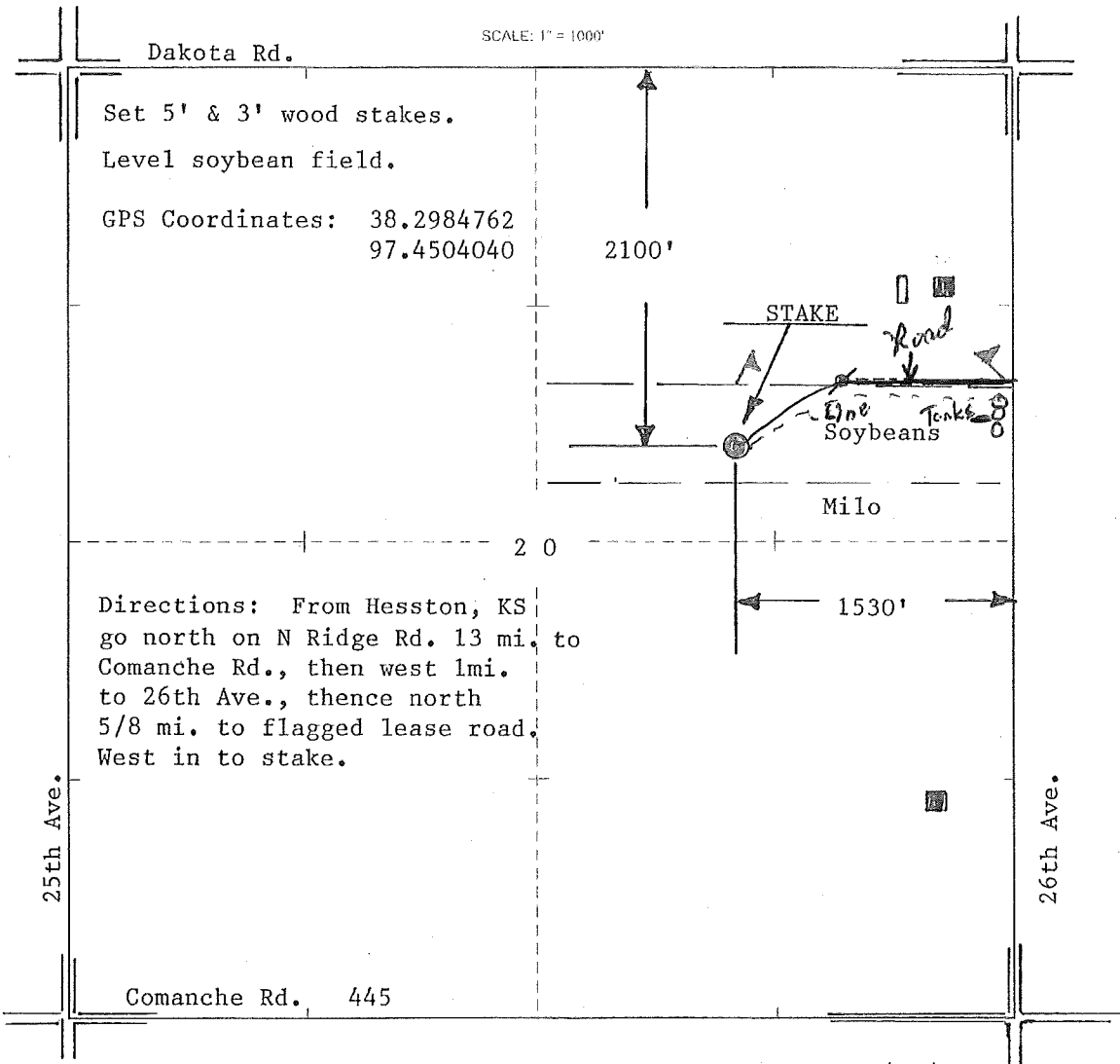
918171

INVOICE NO.

VAL ENERGY INC			#V1-20	KUHLMEIR
OPERATOR			NO.	FARM
McPherson	20	20s	1w	2100' FNL & 1530' FEL of Sec.
COUNTY	S	T	R	LOCATION
				ELEVATION: 1550' GR

VAL ENERGY INC  
125 N. Market, Suite 1110  
Wichita, KS 67202

AUTHORIZED BY: Todd Allam



DATE STAKED: 9/19/17