



Fall & Associates

Stake and Elevation Service

P.O. Box 222

Pretty Prairie, KS. 67570

785-243-7506

Date 7-25-17

Invoice Number 0721171

MURFIN DRILLING

1-24

Argabright

Operator

Number

Farm Name

Rawlins-KS

24

3s

34w

1980'FSL 330'FWL

County-State

S

T

R

Location

Murfin Drilling
250 N Water
Suite 300
Wichita, KS. 67202

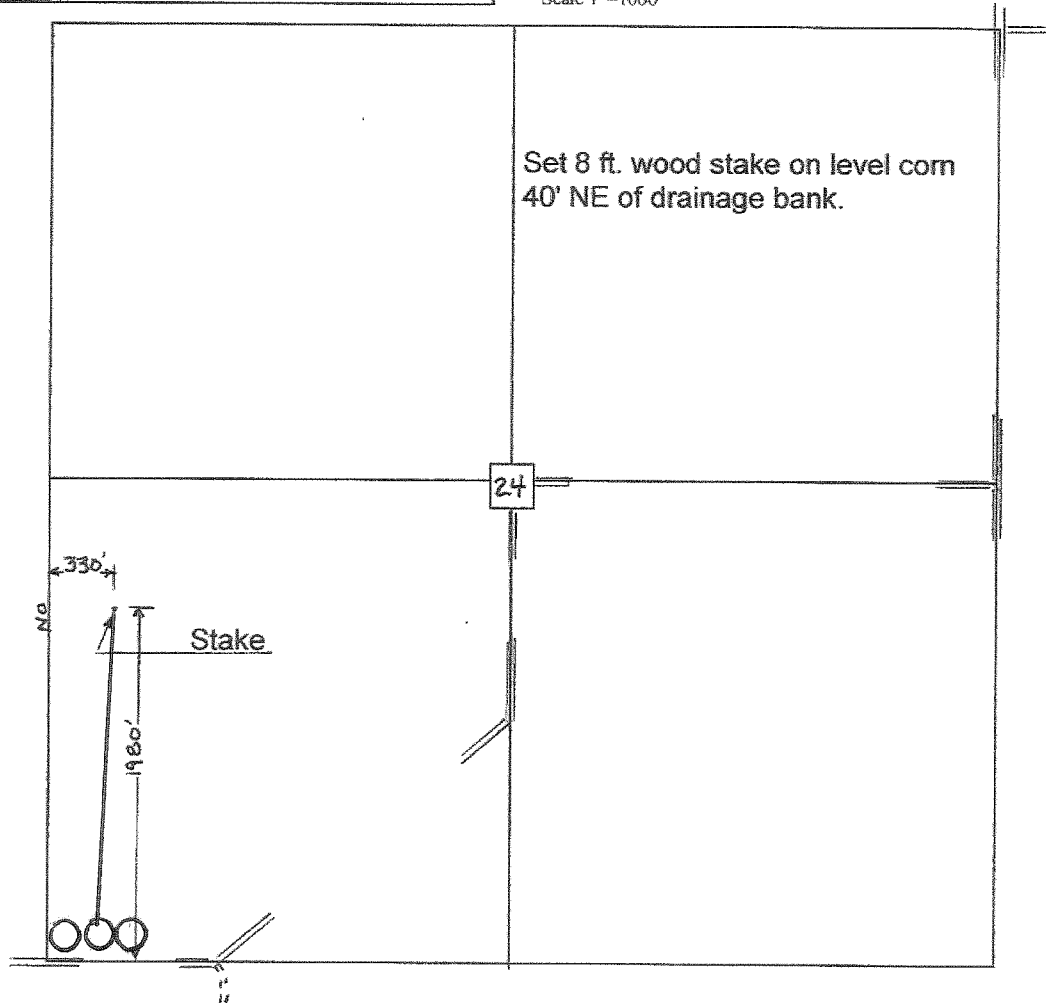
Elevation 2892 Gr.

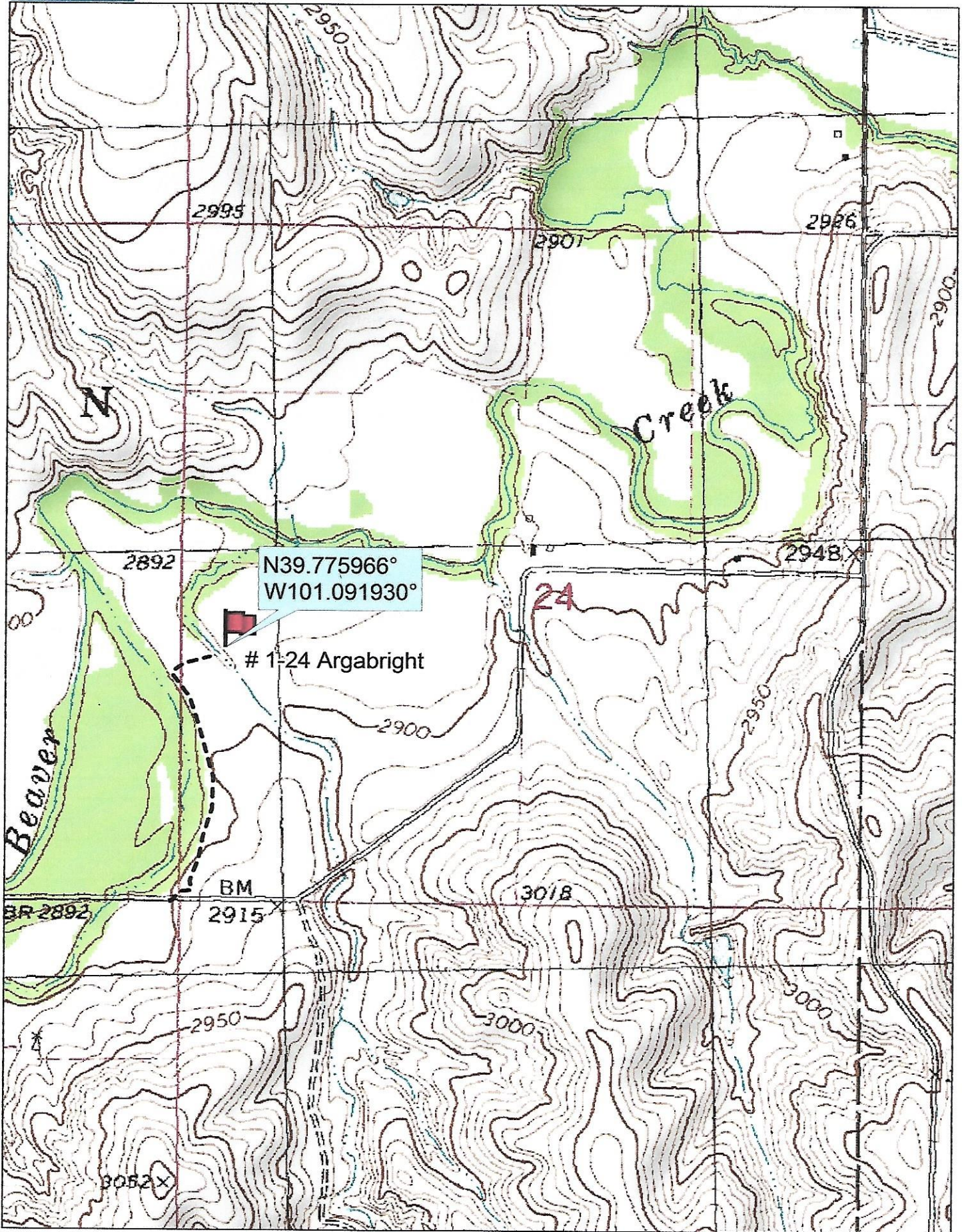
Ordered By: Shauna

Scale 1"=1000'



Set 8 ft. wood stake on level corn
40' NE of drainage bank.





Data use subject to license.

© DeLorme. Topo North America™ 9.

www.delorme.com

