

# Saman Sharifaie

## Petroleum Geologist

### GEOLOGISTS REPORT

#### DRILLING TIME AND SAMPLE LOG

COMPANY: **Murfin Drilling Co., Inc.**  
LEASE: **Garrett #1-12**

FIELD: **Eldgar**  
LOCATION: **1980' N.L. & 730' E.E.L.**  
SEC: **12** TWP: **6S** RGE: **20W**

COUNTRY: **Kansas** STATE: **Kansas**  
CONTRACTOR: **Murfin Drilling #16**  
SPUD: **08/01/17** COMP: **08/09/17**

RTD: **3688'** LTD: **3688'**  
WUD UP: **2793'** TYPE MUD: **Chemical**

SAMPLES SAVED FROM: **3000'** TO RTD  
DRILLING TIME KEPT FROM: **3000'** TO RTD  
SAMPLES EXAMINED FROM: **3000'** TO RTD

GEOLOGICAL SUPERVISION FROM: **2700'**  
CND: **D.L. MELI, Sonic**  
Pioneer Hydraulic

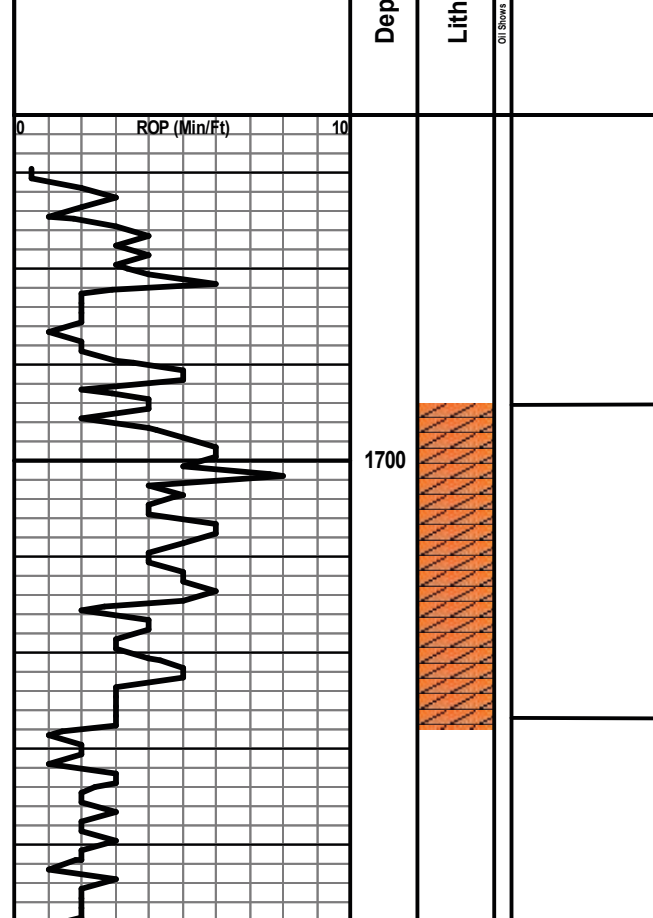
REFERENCE WELL: **Goodness Comp - Garrett #1**

Formation	Sample Tops	E-log Tops	Struct
Anhydrite	1688 (+428)	1696 (+420)	+4
Base Anhydrite	1728 (+388)	1727 (+389)	+1
Topeka	3098 (+982)	3098 (+982)	-1
Oread	3252 (+1136)	3252 (+1136)	Flat
Heebner	3297 (+1181)	3296 (+1180)	-1
Toronto	3320 (+1204)	3319 (+1203)	Flat
Lansing	3356 (+1240)	3354 (+1238)	Flat
Mount City	3543 (+1427)	3542 (+1426)	-1
Reagan	3586 (+1470)	3585 (+1469)	-3

DF: \_\_\_\_\_  
GL: **2111'**  
Measurements Are All From K.C. City Bushing

CASING  
CONDUCTOR: \_\_\_\_\_  
SURFACE: **8-5/8"** at **218'**  
PRODUCTION: **5-1/2"** at **3685'**

ELECTRICAL SUREYS  
CND: **D.L. MELI, Sonic**  
Pioneer Hydraulic



REMARKS Due to fair shows of oil in multiple potential pay zones and positive DST results, it is recommended and agreed upon by all parties that production casing be set to further evaluate this well.

Respectfully Submitted,  
API #15-163-24345  
Saman Sharifaie  
Petroleum Geologist

\*Tops have been adjusted to electric logs

