

DIAMOND TESTING GENERAL REPORT

Jake Fahrenbruch, Tester

Cell: (620) 282-8977 / Office: (800) 542-7313

DIAMOND TESTING



TEST INFORMATION

Well Name	ILS #1
Company Name	RJM Company
Formation	DST #1, Lansing "H,I,J" 3584'-3644'
Test Type	Bottom-Hole w/no extra equip
Surface Location	Sec 16-22s-14w-Stafford Co.-KS
KB Elevation (SL)	1949.000
Gauge Name	5951
Start Test Date	2017/06/14
Start Test Time	02:06:00
Final Test Date	2017/06/14
Final Test Time	08:42:00
Job Number	F483
Contact	Chris Campbell
Site Contact	Jim Musgrove

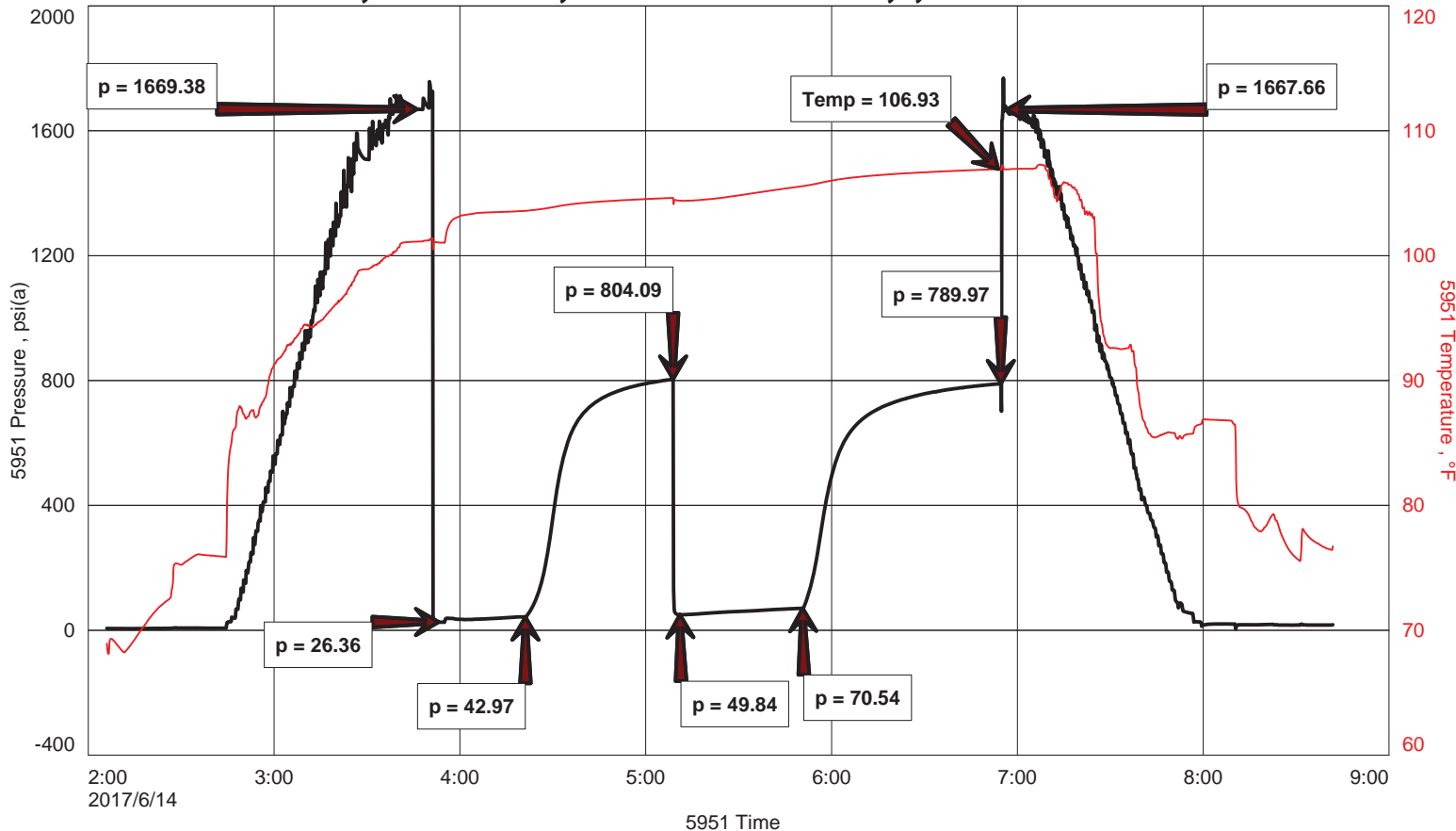
TEST RESULTS

Initial flow, blow increased to BOB in 7.5 min. Blowback @ .25", died.
 Final flow, blow increased to BOB in 2.5 min. Blowback @ 5".

TOTAL RECOVERED FLUID: 145'

- 25' OM 35% oil, 65% mud
- 60' HGCMO 40% gas, 35% oil, 25% mud
- 60' HGCWOM 30% gas, 18% oil, 17% wtr, 35% mud
- 1,070' of Gas In Pipe
- Chlorides: 38,000 PPM ----- RW: .19 ohm @ 70 F ----- PH: 7.0

ILS #1, DST #1, LANSING "H,I,J" 3584'-3644'





DIAMOND TESTING
 P.O. Box 157
 HOISINGTON, KANSAS 67544
 (800) 542-7313
DRILL-STEM TEST TICKET
 FILE: ILS1DST1

ON LOCATION:	<u>23:30</u>
START RECORDERS:	<u>02:06</u>
STOP RECORDERS:	<u>08:42</u>

Company RJM COMPANY Lease & Well No. ILS #1
 Contractor SOUTHWIND DRIL CO. RIG #3 Charge to RJM CO.
 Elevation 1949' KB Formation LANING "H,FJ" Effective Pay _____ Ft. Ticket No. F483
 Date 6-14-17 Sec. 16 Twp. 22S Range 14W County STAFFORD State KS
 Test Approved By JEM MMSGROVE Diamond Representative JAKE FAHRENBRUCH

Formation Test No. 1 Interval Tested from 3584 ft. to 3644 ft. Total Depth 3644 ft.
 Packer Depth 3579 ft. Size 6 3/4 in. Packer depth _____ ft. Size 6 3/4 in.
 Packer Depth 3584 ft. Size 6 3/4 in. Packer depth _____ ft. Size 6 3/4 in.

Depth of Selective Zone Set

Top Recorder Depth (Inside) 3586 ft. Recorder Number 5951 Cap. 6000 P.S.I.
 Bottom Recorder Depth (Outside) 3589 ft. Recorder Number 5586 Cap. 6000 P.S.I.
 Below Straddle Recorder Depth _____ ft. Recorder Number _____ Cap. _____ P.S.I.
 Mud Type CHEMICAL Viscosity 54 (1#LCM) Drill Collar Length _____ ft. I.D. 2 1/4 in.
 Weight 8.9 Water Loss 8.0 cc. Weight Pipe Length _____ ft. I.D. 2 7/8 in.
 Chlorides _____ P.P.M. 3000 Drill Pipe Length 3564 ft. I.D. 3 1/2 in.
 Jars: Make STERLING Serial Number _____ Test Tool Length 20 ft. Tool Size 3 1/2-IF in.
 Did Well Flow? _____ Reversed Out _____ Anchor Length 60 ft. Size 4 1/2-FH in.
 Main Hole Size 7 7/8 Tool Joint Size 4 1/2 XH in. Surface Choke Size 1 in. Bottom Choke Size 5/8 in.

Blow: 1st Open: BLOW INCREASED TO BOB IN 7 1/2 MIN. 1/4" BB DIED
 2nd Open: BLOW INCREASED TO BOB IN 2 1/2 MIN. BB @ 5"

Recovered 25 ft. of OM 35% oil, 65% mud
 Recovered 60 ft. of HGC MO 40% gas, 35% oil, 25% mud
 Recovered 60 ft. of HGC WOM 30% gas, 18% oil, 17% wtr, 35% mud

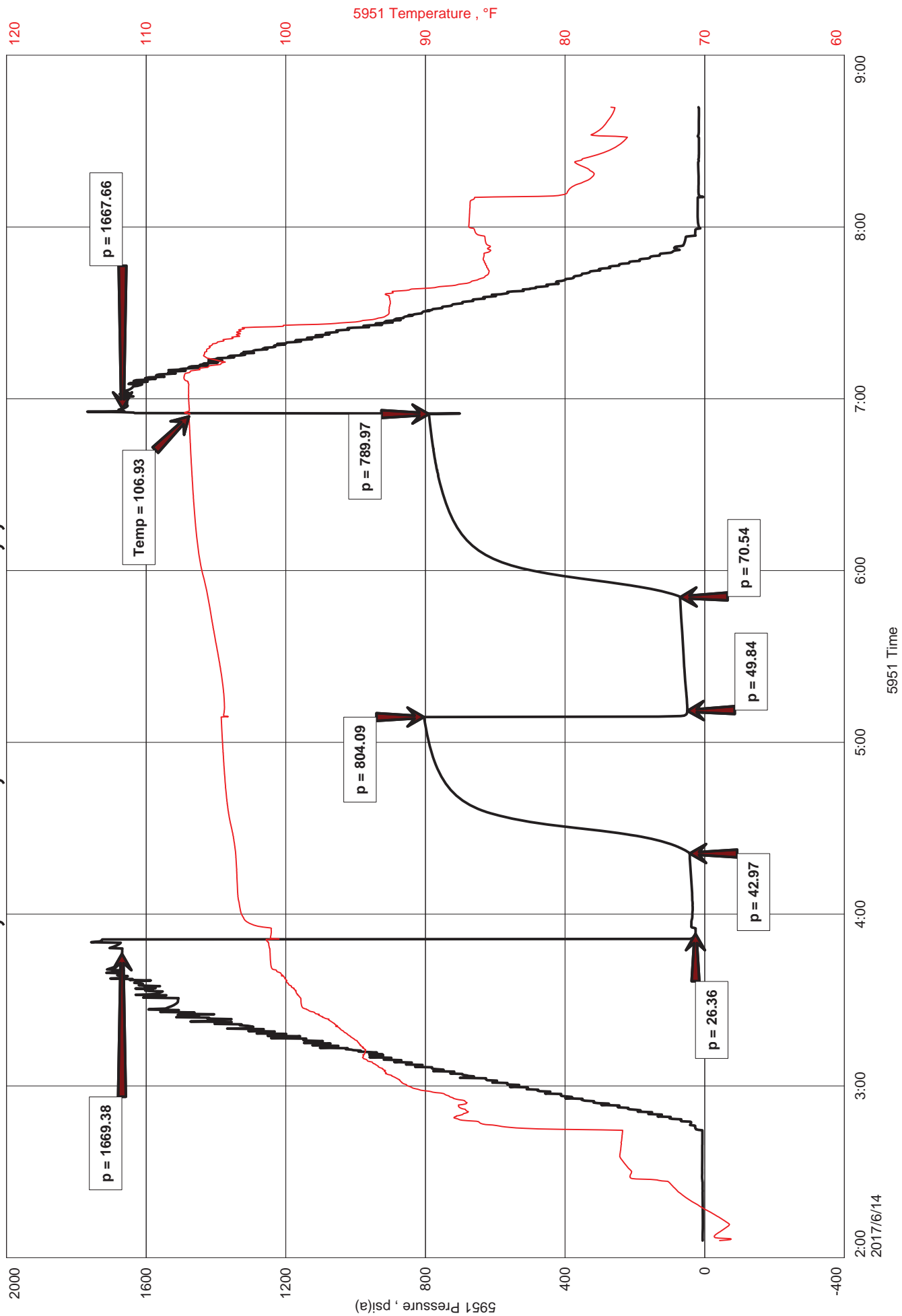
Recovered _____ ft. of _____
 Recovered _____ ft. of 1070' GIP
 Recovered _____ ft. of _____
 Remarks: TOTAL FLUID: 145'
Chlorides: 38,000 PPM
RW: .19 @ 70°F PH: 7.0
 Price Job _____
 Other Charges _____
87 MPT (PRATT)
 Total _____

Time Set Packer(s) 03:52 A.M. P.M. Time Started Off Bottom 06:52 A.M. P.M. Maximum Temperature 107°F

Initial Hydrostatic Pressure..... (A) 1669 P.S.I.
 Initial Flow Period..... Minutes 30 (B) 26 P.S.I. to (C) 43 P.S.I.
 Initial Closed In Period..... Minutes 45 (D) 804 P.S.I.
 Final Flow Period..... Minutes 45 (E) 50 P.S.I. to (F) 71 P.S.I.
 Final Closed In Period..... Minutes 60 (G) 790 P.S.I. THANKS!
 Final Hydrostatic Pressure..... (H) 1668 P.S.I. Scott Johnson

Diamond Testing shall not be liable for damages of any kind to the property or personnel of the one for whom a test is made or for any loss suffered or sustained, directly or indirectly, through the use of its equipment, or its statement or opinion concerning the result of any test. Tools lost or damaged in the hole shall be paid for at cost by the party for whom the test is made.

ILS #1, DST #1, LANSING "H,I,J" 3584'-3644'





DIAMOND TESTING
P.O. Box 157
HOISINGTON, KANSAS 67544
(800) 542-7313
DRILL-STEM TEST TICKET
FILE: ILS1DST1

TIME ON: 02:06
TIME OFF: 08:42

Company RJM Company Lease & Well No. ILS #1
Contractor Southwind Drlg. Rig #3 Charge to RJM Co
Elevation 1949' KB Formation Lansing "H,I,J" Effective Pay _____ Ft. Ticket No. F483
Date 6/14/17 Sec. 16 Twp. 22 S Range 14 W County Stafford State KANSAS
Test Approved By Jim Musgrove Diamond Representative Jake Fahrenbruch

Formation Test No. 1 Interval Tested from 3584 ft. to 3644 ft. Total Depth 3644 ft.
Packer Depth 3579 ft. Size 6 3/4 in. Packer depth _____ ft. Size 6 3/4 in.
Packer Depth 3584 ft. Size 6 3/4 in. Packer depth _____ ft. Size 6 3/4 in.
Depth of Selective Zone Set _____

Top Recorder Depth (Inside) 3586 ft. Recorder Number 5951 Cap. 6000 P.S.I.
Bottom Recorder Depth (Outside) 3589 ft. Recorder Number 5586 Cap. 6000 P.S.I.
Below Straddle Recorder Depth _____ ft. Recorder Number _____ Cap. _____ P.S.I.

Mud Type CHEMICAL Viscosity 54 (1# LCM) Drill Collar Length 0 ft. I.D. 2 1/4 in.
Weight 8.9 Water Loss 8.0 cc. Weight Pipe Length 0 ft. I.D. 2 7/8 in.
Chlorides 3,000 P.P.M. Drill Pipe Length 3,564 ft. I.D. 3 1/2 in.
Jars: Make STERLING Serial Number _____ Test Tool Length 20 ft. Tool Size 3 1/2-IF in.
Did Well Flow? _____ Reversed Out _____ Anchor Length 60 ft. Size 4 1/2-FH in.
Main Hole Size 7 7/8 Tool Joint Size 4 1/2 XH in. Surface Choke Size 1 in. Bottom Choke Size 5/8 in.

Blow: 1st Open: Blow increased to BOB in 7.5 minutes. Blowback @ .25", died.

2nd Open: Blow increased to BOB in 2.5 minutes. Blowback @ 5".

Recovered 25 ft. of OM 35% oil, 65% mud
Recovered 60 ft. of HGCMO 40% gas, 35% oil, 25% mud
Recovered 60 ft. of HGCWOM 30% gas, 18% oil, 17% wtr, 35% mud

Recovered _____ ft. of 1,070' of Gas In Pipe

Recovered _____ ft. of _____	Price Job
Recovered _____ ft. of _____	Other Charges
Remarks: <u>TOTAL RECOVERED FLUID: 145'</u>	Insurance
<u>Chlorides: 38,000 PPM</u>	
<u>RW: .19 ohm @ 70 F</u> <u>PH: 7.0</u>	Total

Time Set Packer(s) 03:52 A.M. P.M. Time Started Off Bottom 06:52 A.M. P.M. Maximum Temperature 107 F

Initial Hydrostatic Pressure..... (A) 1669 P.S.I.
Initial Flow Period..... Minutes 30 (B) 26 P.S.I. to (C) 43 P.S.I.
Initial Closed In Period..... Minutes 45 (D) 804 P.S.I.
Final Flow Period..... Minutes 45 (E) 50 P.S.I. to (F) 71 P.S.I.
Final Closed In Period..... Minutes 60 (G) 790 P.S.I.
Final Hydrostatic Pressure..... (H) 1668 P.S.I.

Diamond Testing shall not be liable for damages of any kind to the property or personnel of the one for whom a test is made or for any loss suffered or sustained, directly or indirectly, through the use of its equipment, or its statement or opinion concerning the result of any test. Tools lost or damaged in the hole shall be paid for at cost by the party for whom the test is made.