



866-463-5600 ★ Many, LA
www.toledomudlogging.com

P. O. Box 1209
 MANY LA, 71449
 (318)-590-9755
 FAX (318)590-9754

COMPANY: DESTINY PETROLUEM
 WELL: Louise 3504 SWD 1-8.
 FIELD: BUFF CREEK/ WILDCAT COUNTY: SUMMER STATE: KANSAS
 LOCATION: SW NE NE NW 8 35 4 W

Interval Logged: 2500' To: 5900 G.L.: _____ K.B: _____
 Date Logged: 8/11/2017 To: 8/24/2017 Spud Date: 8/08/2017
 Rig: WW DRILLING RIG 14 Unit No.: 141
 Loggers: D.MITCHELL, G FOLTZ
 Api No.: 15191227920000
 Filename: destiny_petroleum_louise_3504_swd_1-8.mlw
 Geologist: REID McCARTY

Created By MainLog

Abbreviations: NB...New Bit DST...Drill Stem Test CO...Circ Out DS...Directional Survey NR...No Returns CG...Connection gas TG...Trip Gas LAT...Logged After Trip WOB...Wt on Bit PP...Pump Pressure RPM...Rev/Min SPM...Strokes/Min SG...Survey Gas DTG...Down Time Gas		Lithology Symbols: 			Gas Chromatograph Analysis: TG _____ C1 _____ C2 _____ C3 _____ IC4 _____ NC4 _____ IC5 _____ NC5 _____	
Mud Data WT..Weight V..Viscosity PH..Acidity F..Filtrate CHL..Chlorides SC..Solids Content		Accessories 				

Drilling Rate FT/HR	Vis Por Tr / p g	Lithology	H A R D	% Oil Flu Tr / p f g	Cut Tr / pfg	Descriptions/Remarks	Total Gas/Chromatograph
------------------------	------------------------	-----------	------------------	----------------------------------	--------------------	----------------------	-------------------------



Up 2 Man Logging Unit
 Begin Logging @2500'
 All Pipe Talleys Taken From
 Rig, Drilling 8.75" Open
 Hole W/ Logic 516DS Bit W/
 5x16 Jets, Set 9.625" Casing @
 273'

8/13/17

2500 Svy 1.0°

WOB= 10.8k
 RPM= 73
 SPM=150
 PP=1920

50

2600

300 150 100 50

50

Drilling W/ Water Based Mud

Mud Wt 9.2 Vis 30

Test Gas Trap=119u

SH:gy, dk gy, ltgy sht
 -frm blkgy sblky plty sm
 rthy txt calc SD:rd -lt
 gy DOL: off wht wht vfg
 vfn-fn xln dense argil

LS: offwht, wht, gy,
 tan, mottl, fn grn, fn
 xln, Sm argil, SH:gy,
 ltgy,dkgy,sftfrm,blcky-
 sbbicky, plty ip,occ
 chnky, rthy txt

CG=35u

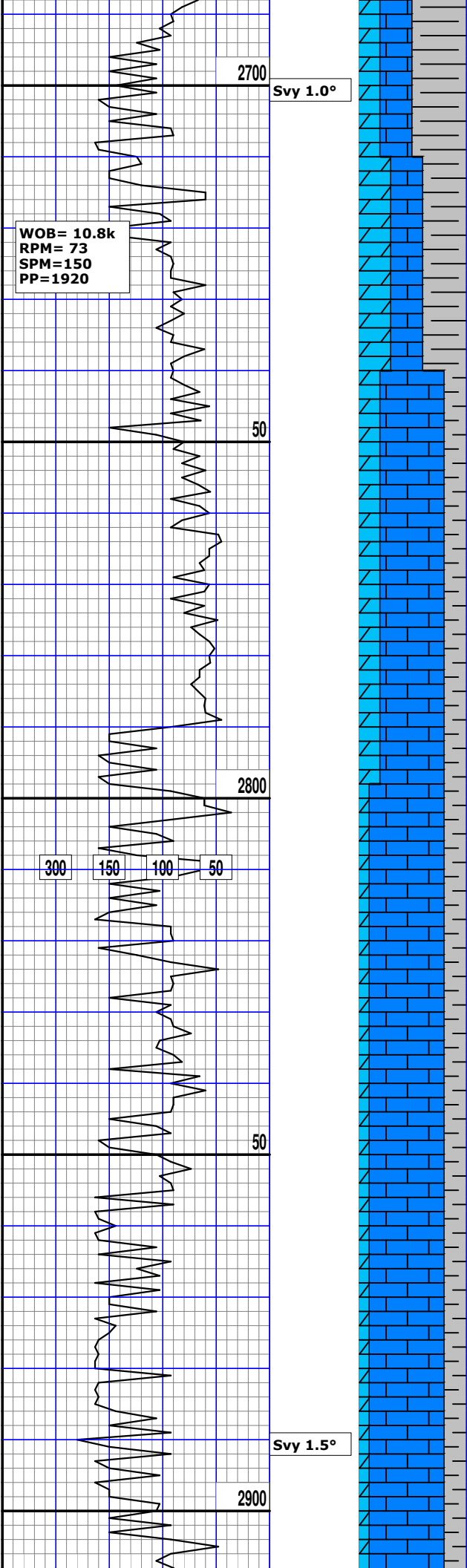
Mud Wt 9.2 Vis 35

CG=36u

CG=32u

CG=31u

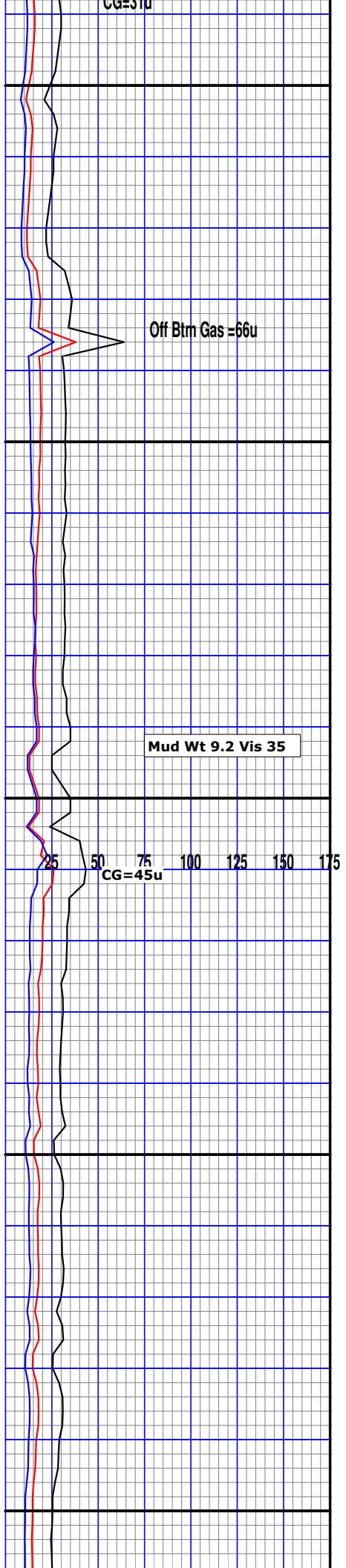
25 50 75 100 125 150 175



SH: gy, dk gy, lt gy,
sft frm, blkv-sbbckv,
plty, rthy txt, calc
LS: offwht, wht, gy,
vfn-fn xln, dense,
argil

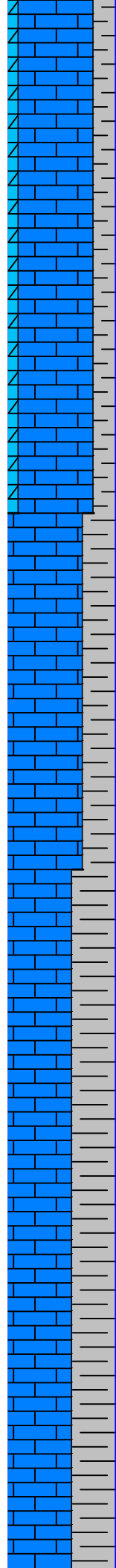
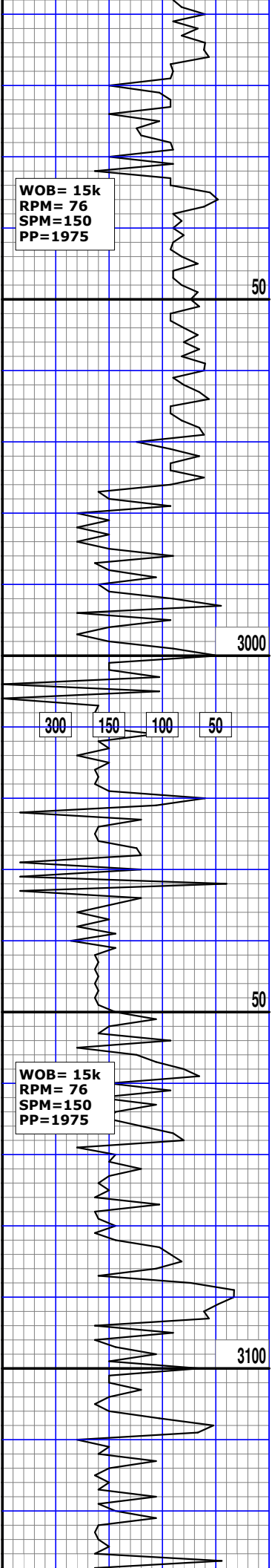
SH:gry,lt gry,occ blk,frm
to hrd,plty,blkv,flky, brit
aren,amor,v slli calc

LS: offwht, wht, gy,
tan, mottl, fn grn, fn
xln, S argil, SH: gy, lt
gy, dk gy, sft frm,
blkv-sbbckv. plty ip.



300 150 100 50

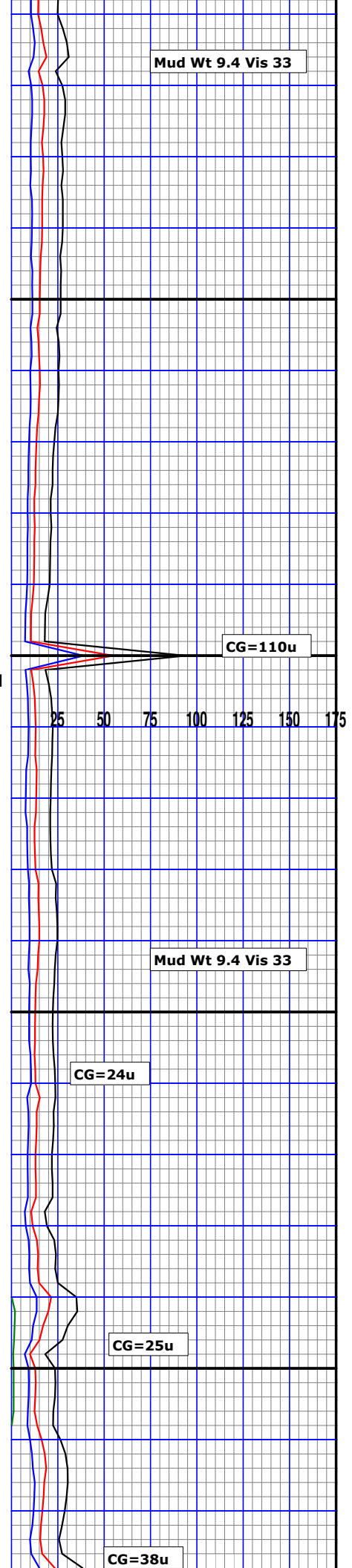
25 50 75 100 125 150 175

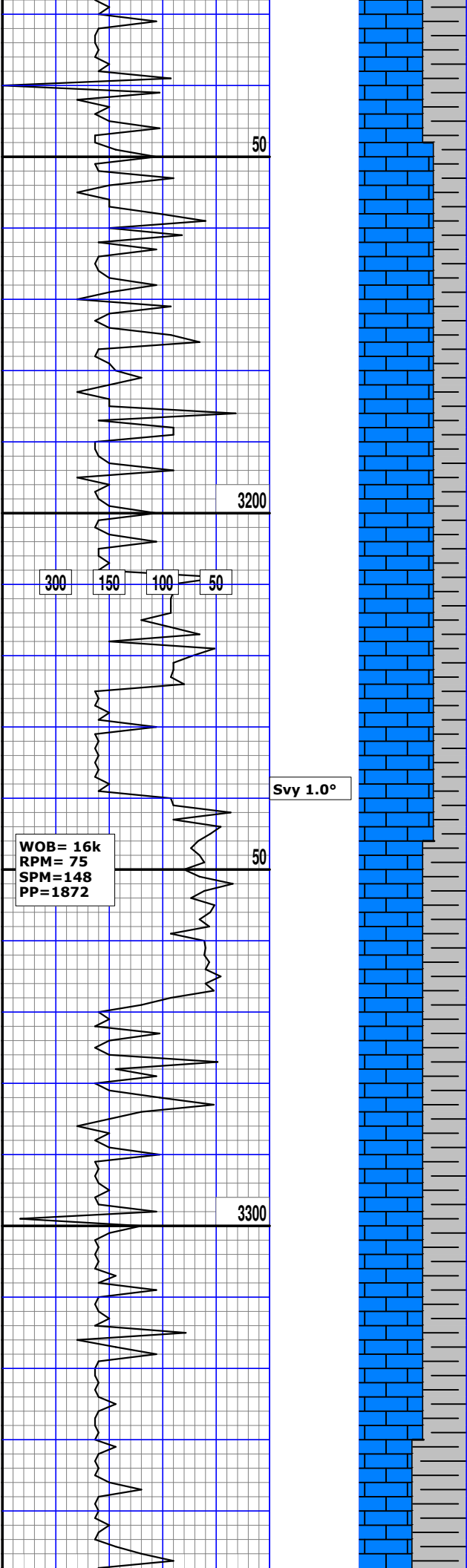


occ chnky, rthy txt

LS: lt gry,lt grn, tan,lt brn
mdstn,crptxln-micxln, sft-mod
frm,fn grn, aren ip, sli arg ip,
no fluor,no cut

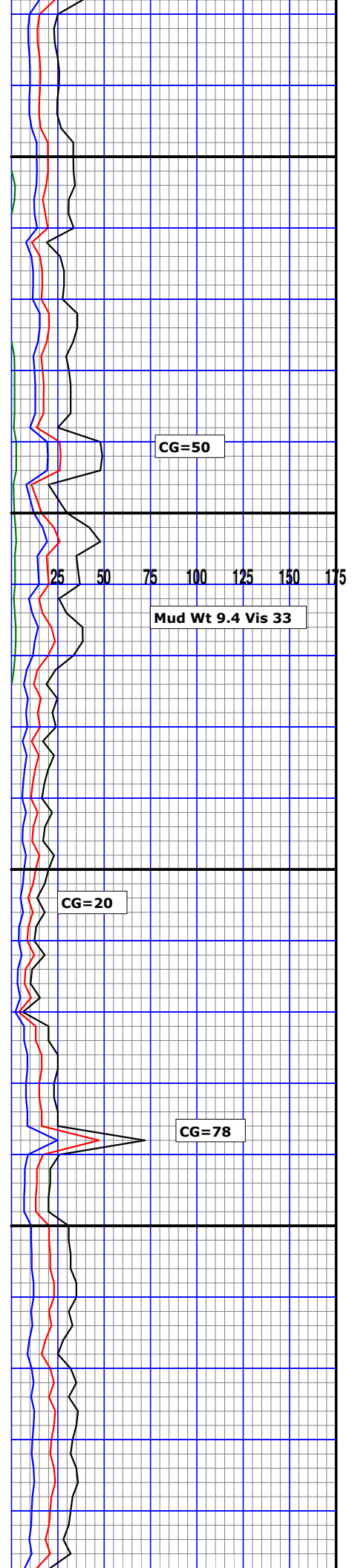
SH: gy, dk gy, lt gy,sft-frm,
bcky-sbbcky,plty, rthy txt,
sli calc
LS: offwht, wht, gy,
vfn-fn xln, dense,

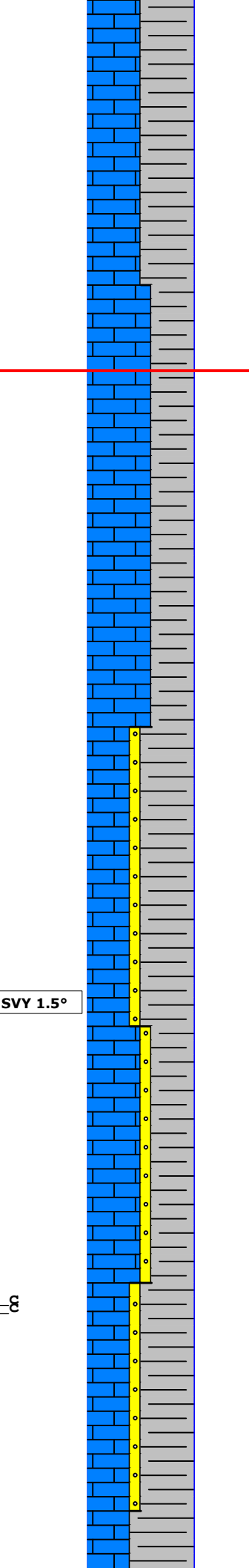
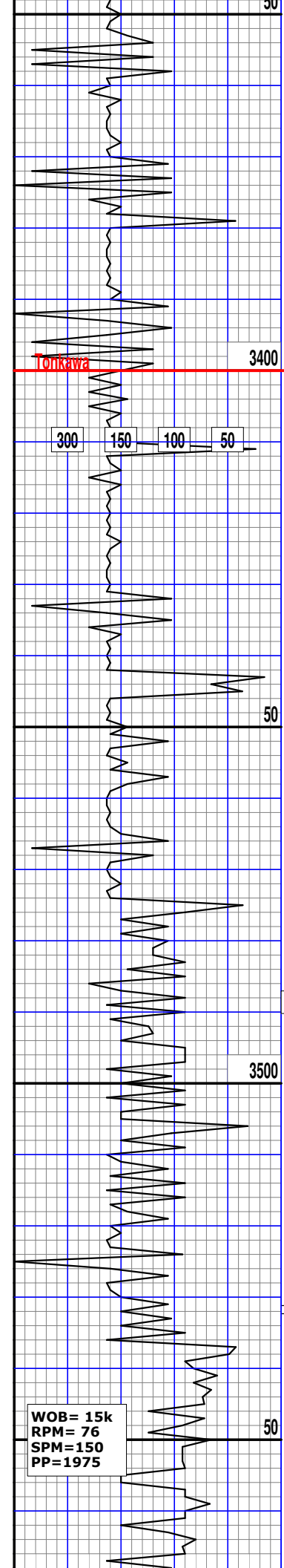




LS: lt gry,lt grn, off wht
mdstn,crptxl n-micxl n, sft-
modfrm,fn grn, aren ip, sli
arg ip,no fluor,no cut

LS: lt gry,lt grn, off wht
mdstn,crptxl n-micxl n, sft-
modfrm,fn grn, aren ip, sli
arg ip,no fluor,no cut

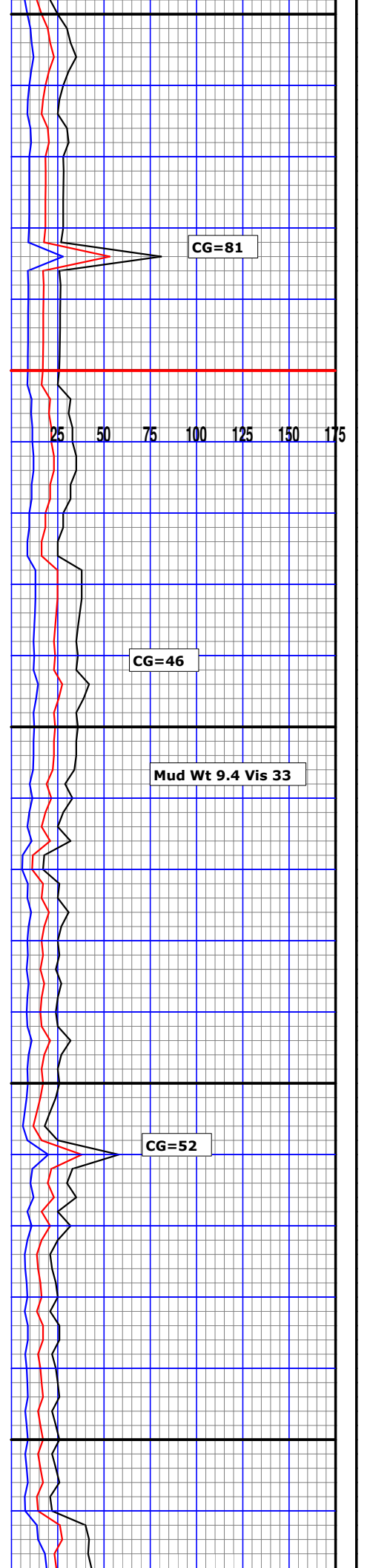


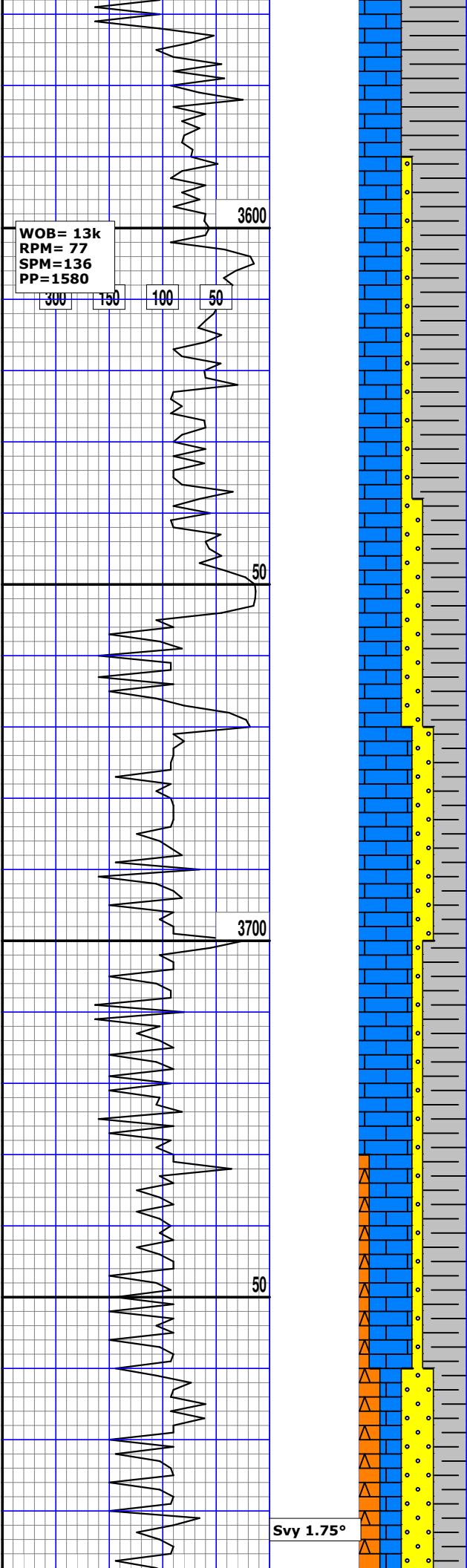


SH: gy, dk gy, lt gy, frm-hrd, bcky-pltyflky, sli calc aren
 LS: offwht, wht, gy, vfn-fn xln, dense, argil, no vis flor

LS: lt gry, lt grn, off wht mdstn, crptxln-micxln, sft-modfrm, fn grn, aren ip, sli arg ip, no fluor, no cut, tr snd

Lost Returns @ 3541'
 140BBIs Total





WOB=13k
RPM=77
SPM=136
PP=1580

300 150 100 50

3600

50

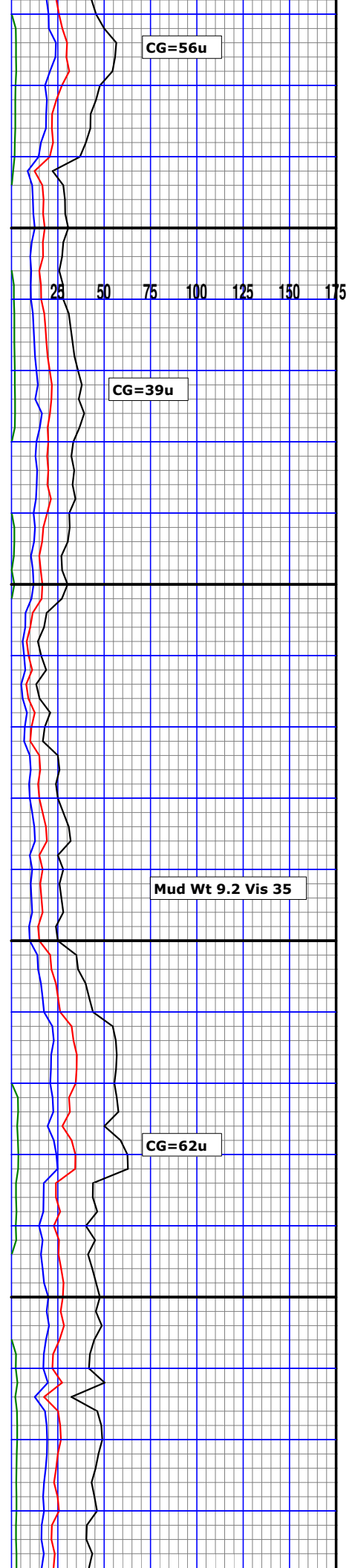
3700

50

Svy 1.75°

SH: gy, dk gy, lt gy, sft frm,
bicky-sbbicky, pty, rthy txt,
calc
LS: offwht, wht, gy, vfn-fn xln,
dense,
argil

LS: offwht, wht, gy, tan, mottl,
fn grn, fnxln, S argil,
SH: gy, ltgy, dk gy, sft frm,
bicky-sbbicky, pty ip,
occ chnky, rthy txt



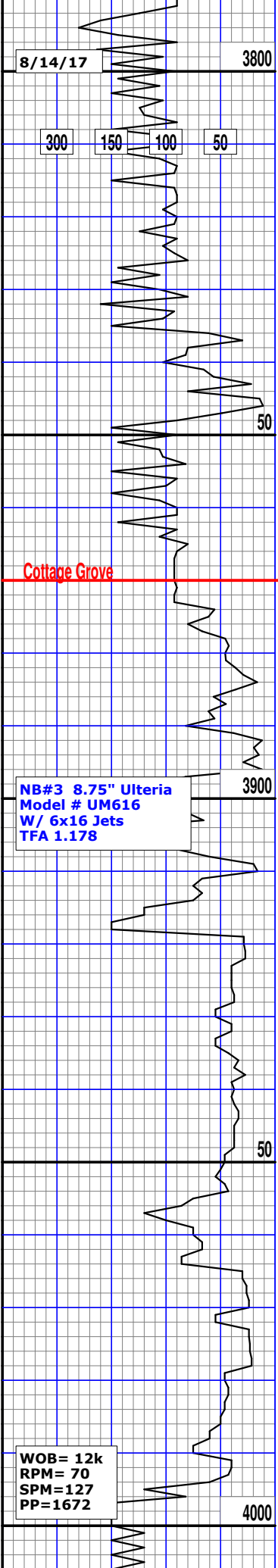
CG=56u

25 50 75 100 125 150 175

CG=39u

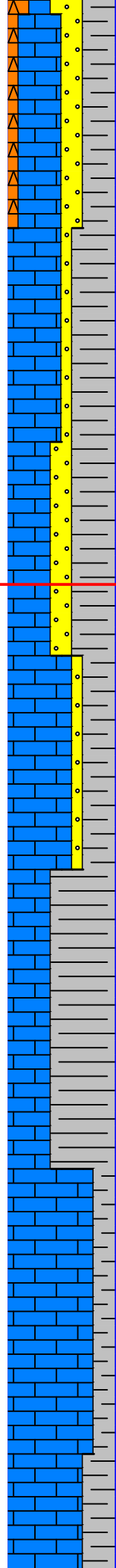
Mud Wt 9.2 Vis 35

CG=62u



NB#3 8.75" Ulteria
Model # UM616
W/ 6x16 Jets
TFA 1.178

WOB= 12k
RPM= 70
SPM=127
PP=1672

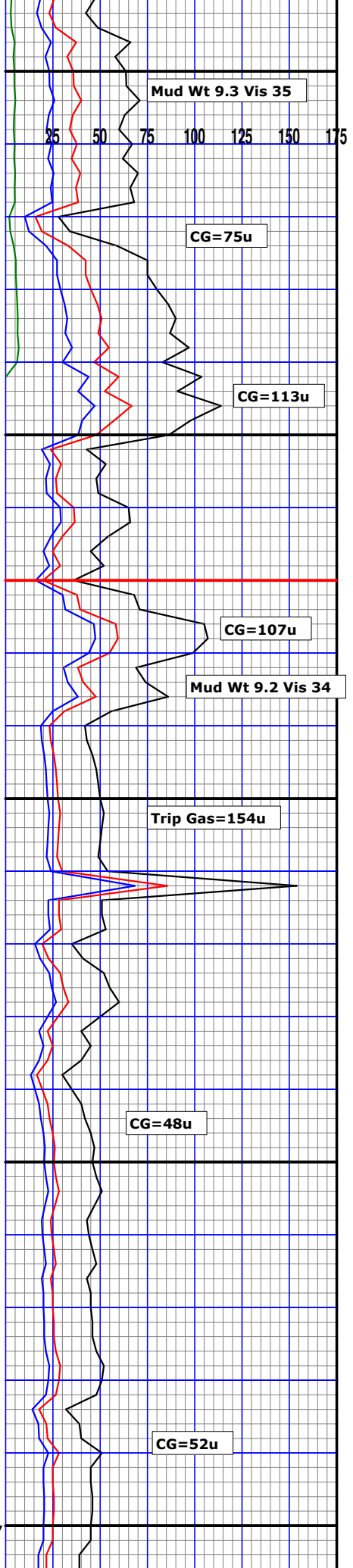


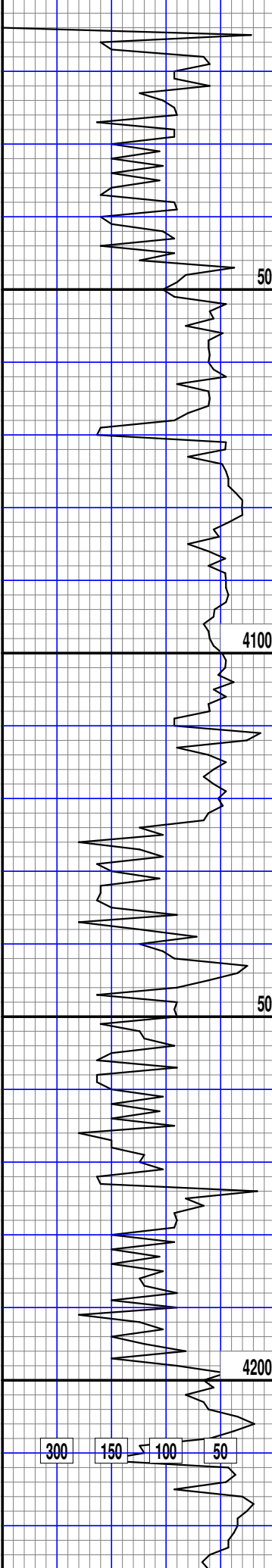
SH: gy, dk gy, lt gy,
blck, sft frm, occ chnky, blcky,
R plty, rgrthy txt, Chert: off
wht gy, v frm

MW=9.2 VIS=35
PV=10 YP=15
FIL=12.5 PH=8.5
CL=25000

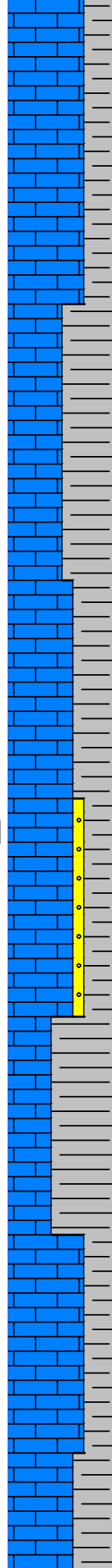
LS: offwht, wht, tan, occ brn,
vfn-fn xln, dense, argil,
SH: gy, occ blck, plty, frm-hrd
rthy txt, sli calc

LS: offwht, wht, crmocc brn,
vfn-fn xln, dense, argil, tit cmnt,
SH: gy, occ blck, blcky
plty, sme chnky, rthy
txt



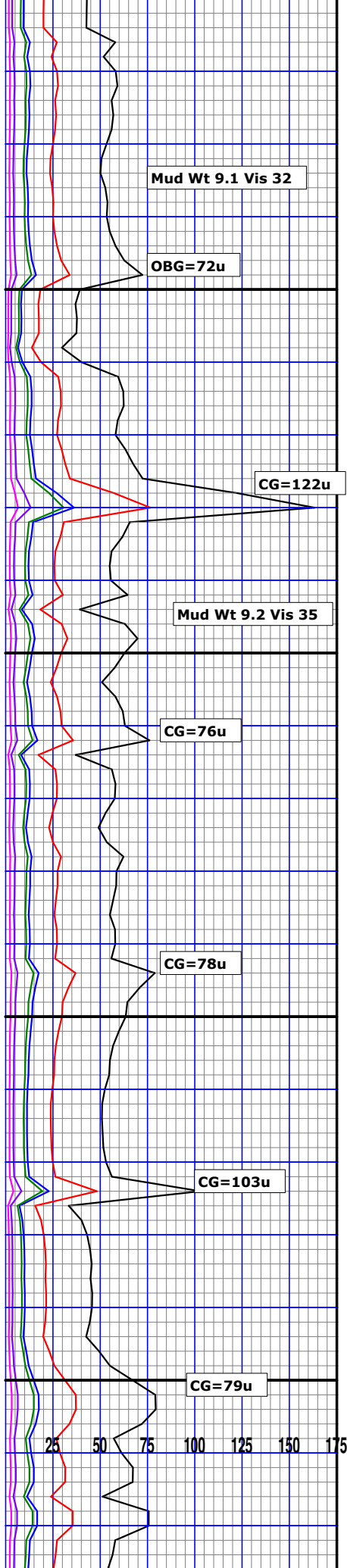


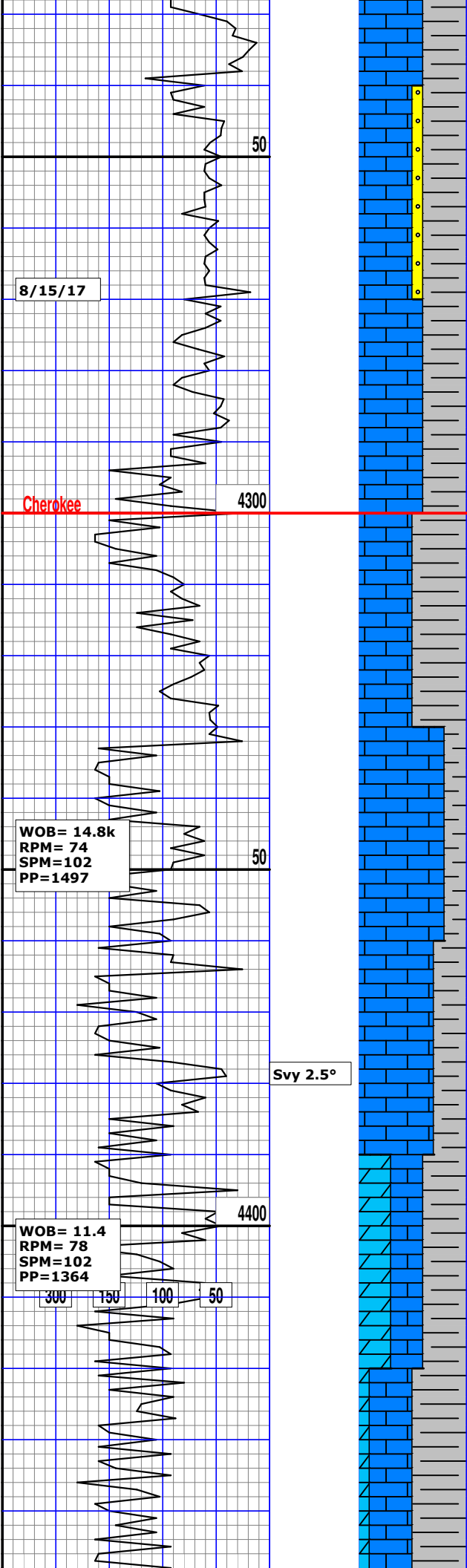
Svy 1.0°



SH: gy, dk gy, frm-sft,blcky-cky, plty,chunky ip, rh txt, v calc, LS: offwht,wht, lt tan, fn xln,dense

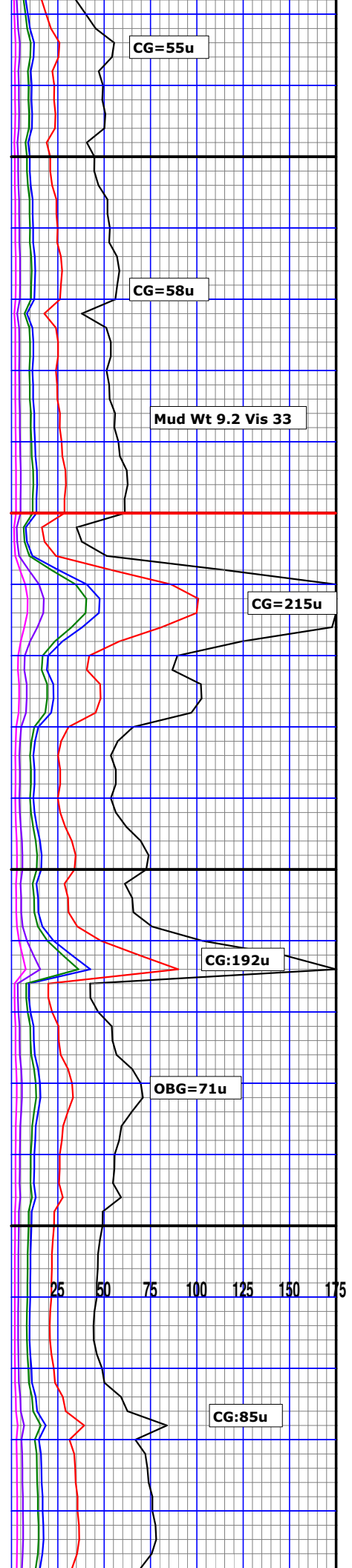
LS: offwht, wht, tan,occ brn, vfn-fn xln,dense, argil, SH: gy,occ blck, blcky-sbblcky plty, sme chnky, rthy txt,

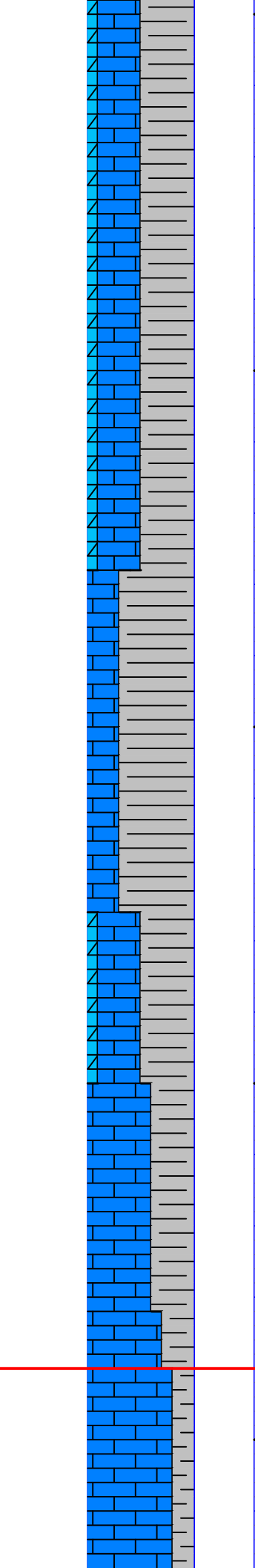
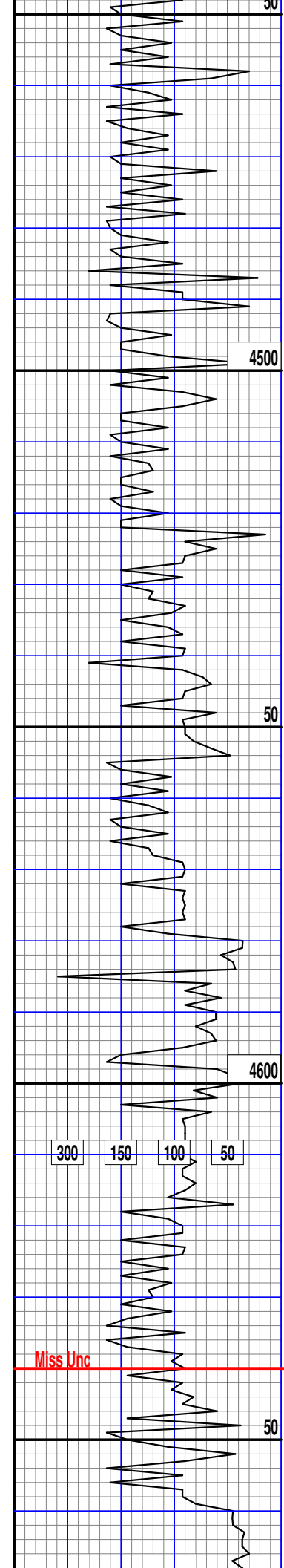




SH:gy, dk gy, frm-hrd,blcky-,
ply,chunky ip, rh txt,
v calc,
LS: offwht,wht, lt tan, fn xln,
R dense,,no vis flor

SH:gy, dk gy, frm-hrd,blcky,
ply,flky, rh txt,v calc, amor
LS: offwht,wht, lt tan, fn xln,
R dense,

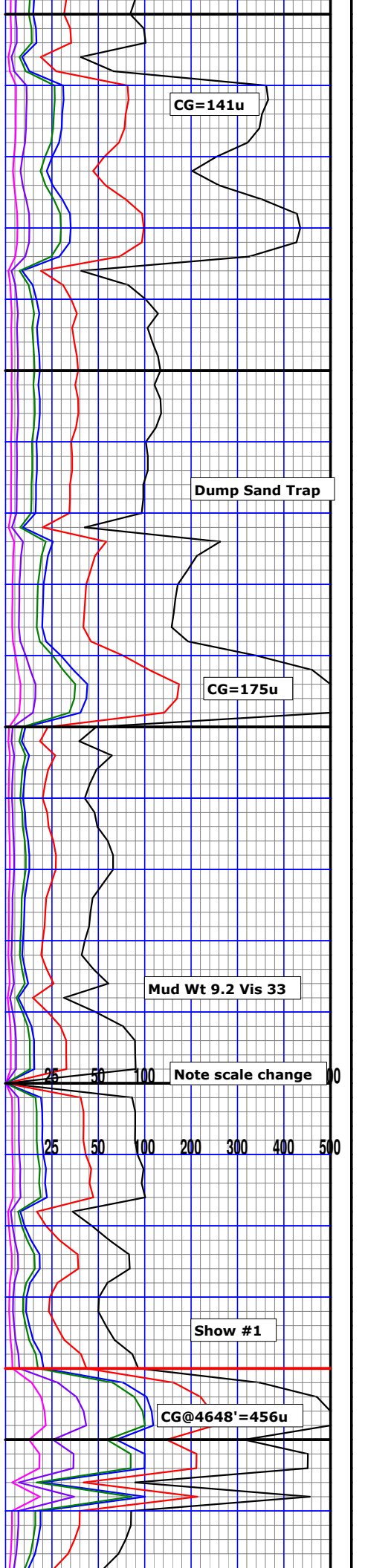




LS: offwht, wht, tan, occ brn, vfn-fn xln, dense, argil, tr Dol, no vis flor, no cut

SH: gy, dk gy, frm-hrd, blkky, plty, flky, rh txt, frm-hrd, aren, amor, wxy tnt, vcalc

LS: lt gry, lt grn, tan, lt brn mdstn, crptxln-micxln, sft-mod frm, fn grn, aren ip, sli arg ip, dull yel fluor, slow explosive cut



Miss Unc

Show#1 F/4640' T/4730
Max Gas=1009u

WOB=13.4K
RPM= 70
SPM=135
PP=1450

4700

Svy 3.0°

50

4800

NB#4 8.75" Drillpoint
Model# DT6161X
W/ 6x16 Jets

300 150 100 50

8/16/17

50

LS: lt gry,lt grn, tan,lt brn
mdstn,crptxn-micxn, sft-mod
frm,fn grn, aren ip, sli arg ip,
dull yel fluor,slow explosive
cut

Show#1 Max Gas=1009u

LS: lt gry,lt grn, tan,lt brn
mdstn,crptxn-micxn, sft-mod
frm,fn grn, aren ip, sli arg ip,
dull yel fluor,tr anhydrite

MW=9.1VIS=35
PV=5 YP=8
FIL=9.0 PH=10.5
CL=38000

CG@4679'=691u

CG@4711'=202u

Service Rig

CG=60u

Mud Wt 9.1 Vis 35

OBG=110u

CG=230u

25 50 100 200 300 400 500

Trip Gas=500u

CG=90u

WOB=12K
RPM= 78
SPM=150
PP=1675

4900

LS: lt gry,lt grn, tan,lt brn
mdstn,crptxn-micxn, sft-mod
frm,fn grn, aren ip, sli arg ip,
SH;lt gry gry, frm-vhrd
ply flky blk,y,v sml cuttings,
aren,v calc

CG=88u

Change Shaker Screens

Mud Wt 9.3 Vis 33

50

CG=105u

Kinderhook

5000

Dol: lt gry,grycrm,drk gry I.p.
mdstn,crptxn-micxn, sft-mod
frm,fn grn, aren ip, sli arg ip,
SH;lt gry gry, frm-vhrd
ply flky blk,y,v sml cuttings,
aren,v calc

CG=200u

300 150 100 50

25 50 100 200 300 400 500

Service Rig

Woodford Shale

50

MW=9.3 VIS=40
PV=10 YP=17
FIL=6.5 PH=9.2
CL=32000

CG=30u

Mud Wt 9.0 Vis 36
10BBL Sweep

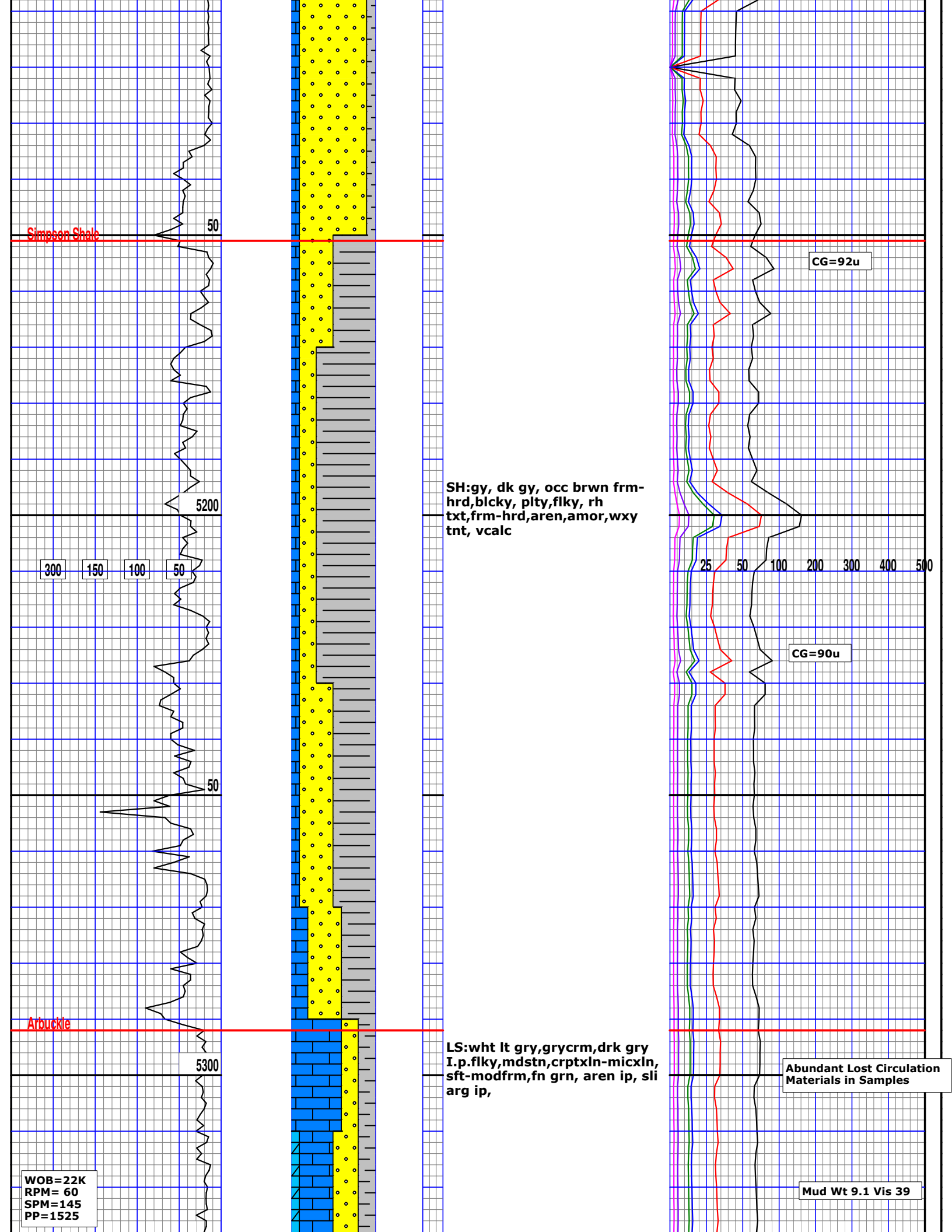
Simpson Sand

5100

SS: wht,crm,lt gry,sml grn
sbrng sbrnd, msly uncons to
cons i.p.,calclign sand, wl
srtd,no vis flor,

Trip Gas=448u

8/17/17



Simpson Shale

50

CG=92u

5200

SH:gy, dk gy, occ brwn frm-hrd, bicky, plty, flky, rh txt, frm-hrd, aren, amor, wxy tnt, vcalc

300

150

100

50

25

50

100

200

300

400

500

CG=90u

50

Arbuckle

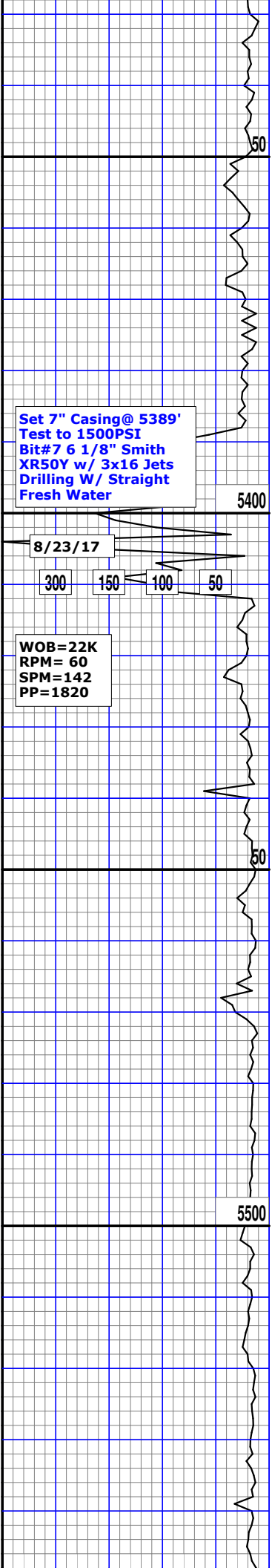
5300

LS:wht lt gry, grycrm, drk gry I.p.flky, mdstn, crptxn-micxn, sft-modfrm, fn grn, aren ip, sli arg ip,

Abundant Lost Circulation Materials in Samples

WOB=22K
RPM=60
SPM=145
PP=1525

Mud Wt 9.1 Vis 39

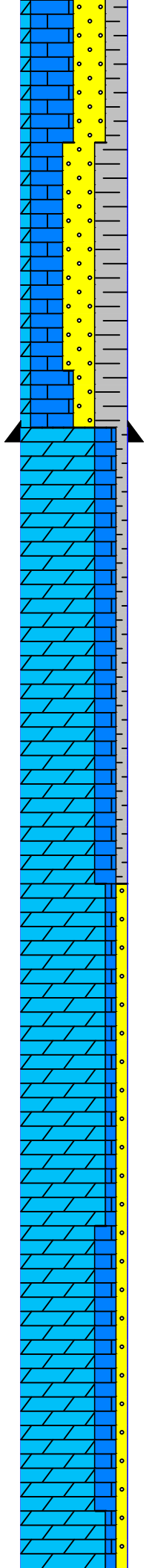


Set 7" Casing@ 5389'
 Test to 1500PSI
 Bit#7 6 1/8" Smith
 XR50Y w/ 3x16 Jets
 Drilling W/ Straight
 Fresh Water

8/23/17

300 150 100 50

WOB=22K
 RPM= 60
 SPM=142
 PP=1820

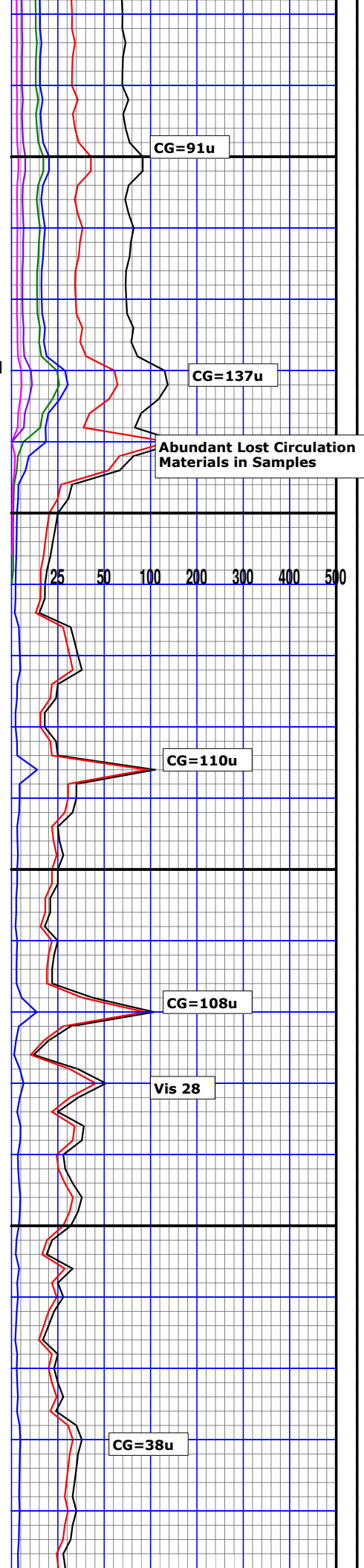


MW=9.1 VIS=38
 PV=8 YP=15
 FIL=6.5 PH=9.7
 CL=46000

Dol: wht,gry,crm,
 mdstn,crptxn-micxln, sft-mod
 frm,fn grn, aren ip, sli arg ip,
 SH;lt grn gry, frm-vhrd
 plty flky blk,y,v sml cuttings,
 aren,v calc
 SS: clr,sb ang sbrnd,sm grn,
 uncons-cons i.p., dull to brt
 yel flor

Dol:dul wht,crm,mdstn,
 crptxn-micxln, sft-mod
 frm,fn grn, aren ip, sli arg ip,
 30-40% Brt Yel Flor, ring cut

Dol:dul wht,crm,mdstn,
 crptxn-micxln, sft-mod
 frm,fn grn, aren ip, sli arg ip,
 20-30% Brt Yel Flor, ring cut



CG=91u

CG=137u

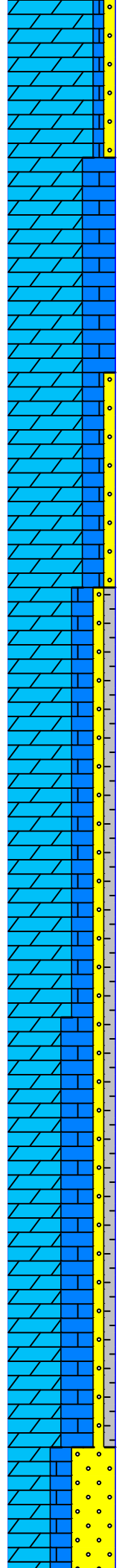
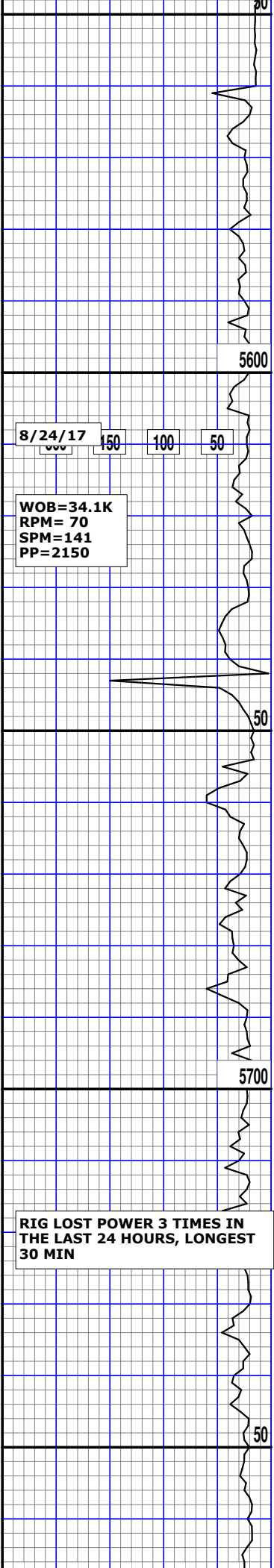
Abundant Lost Circulation
 Materials in Samples

CG=110u

CG=108u

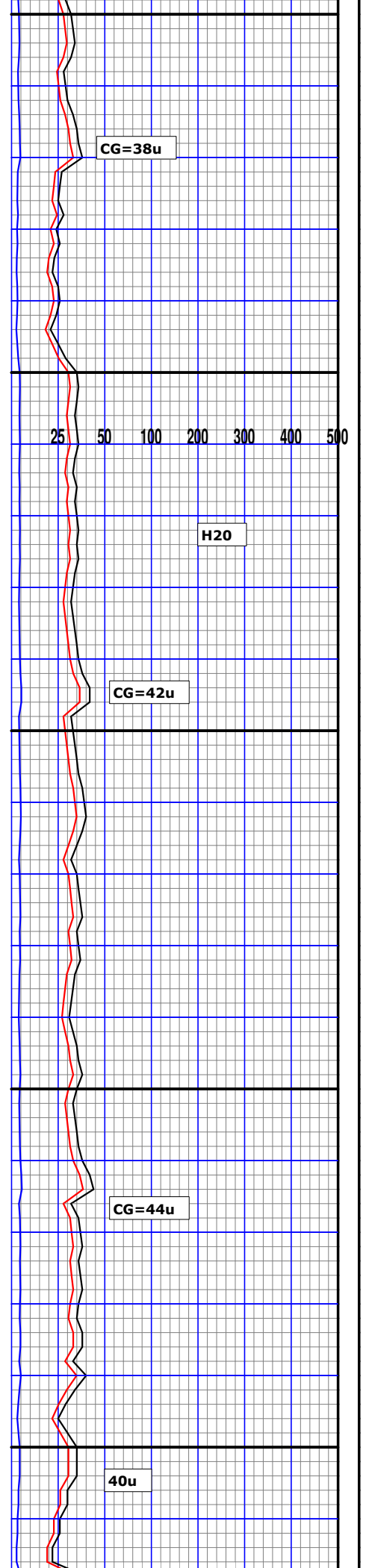
Vis 28

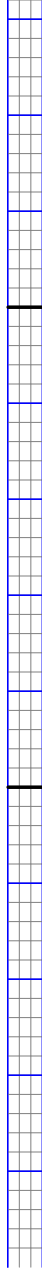
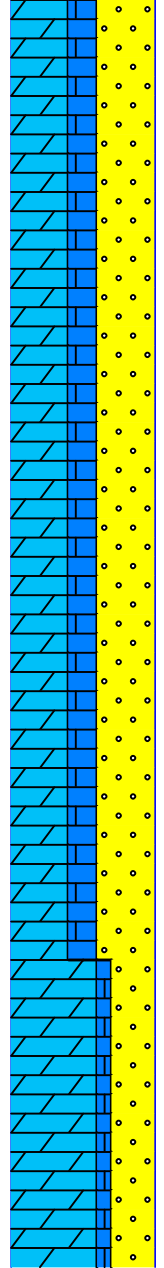
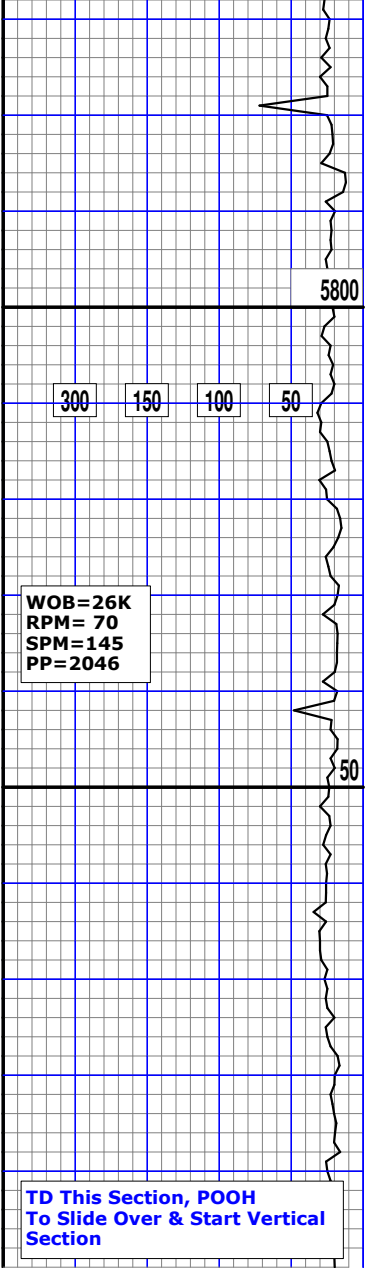
CG=38u



LS:wht lt gry,grycrm,drk gry
 I.p.flky,mdstn,crptxln-micxln,
 sft-modfrm,fn grn, aren ip, sli
 arg ip, 20%-30 brght yiw flour

Dol:dul wht,crm,mdstn,
 crptxln-micxln, sft-mod
 frm,fn grn, aren ip, sli arg ip,
 10-20% Brt Yel Flor, ring cut





SS: wht,crm,lt gry,sml grn
sbrnd, msly unconcs to
cons i.p.,calclign sand, wl
srtd,70% Brt Yel Flor W/
Exploding Flash Cut

