



DRILL STEM TEST REPORT

Prepared For: **Carmen Schmitt, Inc.**

PO BOX 47
Great Bend KS 67530+0047

ATTN: Brad Rine

Gleason #1

14-23S-21W Hodgeman KS

Start Date: 2017.09.13 @ 08:15:00

End Date: 2017.09.13 @ 16:14:15

Job Ticket #: 63042 DST #: 1

Trilobite Testing, Inc
PO Box 362 Hays, KS 67601
ph: 785-625-4778 fax: 785-625-5620

Printed: 2017.09.14 @ 08:33:40



**TRILOBITE
TESTING, INC.**

DRILL STEM TEST REPORT

Carmen Schmitt, Inc.
PO BOX 47
Great Bend KS 67530+0047
ATTN: Brad Rine

14-23S-21W Hodgeman KS

Gleason #1

Job Ticket: 63042 **DST#: 1**

Test Start: 2017.09.13 @ 08:15:00

GENERAL INFORMATION:

Formation: **Mississippi**
 Deviated: No Whipstock: ft (KB)
 Time Tool Opened: 10:53:15
 Time Test Ended: 16:14:15
 Interval: **4575.00 ft (KB) To 4598.00 ft (KB) (TVD)**
 Total Depth: 4598.00 ft (KB) (TVD)
 Hole Diameter: 7.88 inches Hole Condition: Fair
 Test Type: Conventional Bottom Hole (Initial)
 Tester: Spencer J. Staab
 Unit No: 84
 Reference Elevations: 2334.00 ft (KB)
 2329.00 ft (CF)
 KB to GR/CF: 5.00 ft

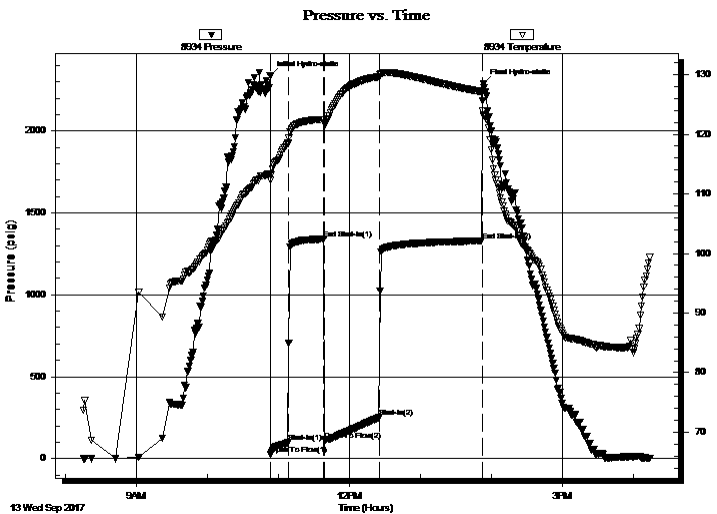
Serial #: 8934

Outside

Press@RunDepth: 250.64 psig @ 4576.00 ft (KB) Capacity: 8000.00 psig
 Start Date: 2017.09.13 End Date: 2017.09.13 Last Calib.: 2017.09.13
 Start Time: 08:15:15 End Time: 16:14:15 Time On Btm: 2017.09.13 @ 10:53:00
 Time Off Btm: 2017.09.13 @ 13:53:15

TEST COMMENT: 15-IF-Strong Blow ; BOB in 7 mins
 30-ISI-Fair Blow ; Built to 5"; Died back to 4"
 45-FF-Strong Blow ; BOB in 3 mins
 90-FSI-Fair Blow ; BOB in 30 mins

PRESSURE SUMMARY



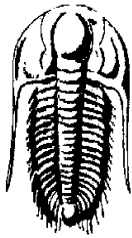
Time (Min.)	Pressure (psig)	Temp (deg F)	Annotation
0	2335.46	113.39	Initial Hydro-static
1	26.33	112.28	Open To Flow (1)
15	97.55	118.49	Shut-In(1)
46	1340.51	122.47	End Shut-In(1)
47	114.10	121.70	Open To Flow (2)
92	250.64	129.63	Shut-In(2)
179	1328.73	127.11	End Shut-In(2)
181	2286.41	123.11	Final Hydro-static

Recovery

Length (ft)	Description	Volume (bbl)
60.00	MCGO 10%M 50%G 40%O	0.30
120.00	Gassy Emulsified Oil 30%G 70%O	0.60
120.00	GO 30%G 70%O	1.68
180.00	GO 50%G 50%O	2.52
80.00	GO 10%G 90%O	1.12
0.00	1640' GIP 100%G	0.00

Gas Rates

Choke (inches)	Pressure (psig)	Gas Rate (Mcf/d)



**TRILOBITE
TESTING, INC.**

DRILL STEM TEST REPORT

Carmen Schmitt, Inc.
PO BOX 47
Great Bend KS 67530+0047
ATTN: Brad Rine

14-23S-21W Hodgeman KS

Gleason #1

Job Ticket: 63042

DST#: 1

Test Start: 2017.09.13 @ 08:15:00

GENERAL INFORMATION:

Formation: **Mississippi**

Deviated: No Whipstock: ft (KB)

Time Tool Opened: 10:53:15

Time Test Ended: 16:14:15

Interval: 4575.00 ft (KB) To 4598.00 ft (KB) (TVD)

Total Depth: 4598.00 ft (KB) (TVD)

Hole Diameter: 7.88 inches Hole Condition: Fair

Test Type: Conventional Bottom Hole (Initial)

Tester: Spencer J. Staab

Unit No: 84

Reference Elevations: 2334.00 ft (KB)

2329.00 ft (CF)

KB to GR/CF: 5.00 ft

Serial #: 9120 **Inside**

Press@RunDepth: psig @ 4576.00 ft (KB)

Start Date: 2017.09.13

End Date: 2017.09.13

Start Time: 08:15:15

End Time: 16:14:15

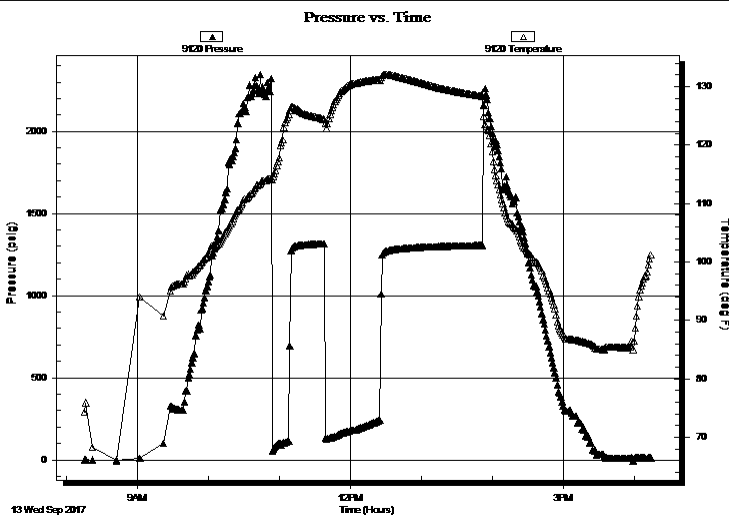
Capacity: 8000.00 psig

Last Calib.: 2017.09.13

Time On Btm:

Time Off Btm:

TEST COMMENT: 15-IF-Strong Blow ; BOB in 7 mins
30-ISI-Fair Blow ; Built to 5"; Died back to 4"
45-FF-Strong Blow ; BOB in 3 mins
90-FSI-Fair Blow ; BOB in 30 mins



PRESSURE SUMMARY

Time (Min.)	Pressure (psig)	Temp (deg F)	Annotation

Recovery

Length (ft)	Description	Volume (bbl)
60.00	MCGO 10%M 50%G 40%O	0.30
120.00	Gassy Emulsified Oil 30%G 70%O	0.60
120.00	GO 30%G 70%O	1.68
180.00	GO 50%G 50%O	2.52
80.00	GO 10%G 90%O	1.12
0.00	1640' GIP 100%G	0.00

Gas Rates

Choke (inches)	Pressure (psig)	Gas Rate (Mcf/d)



**TRILOBITE
TESTING, INC.**

DRILL STEM TEST REPORT

TOOL DIAGRAM

Carmen Schmitt, Inc.
PO BOX 47
Great Bend KS 67530+0047
ATTN: Brad Rine

14-23S-21W Hodgeman KS
Gleason #1
Job Ticket: 63042 **DST#: 1**
Test Start: 2017.09.13 @ 08:15:00

Tool Information

Drill Pipe:	Length: 4402.00 ft	Diameter: 3.80 inches	Volume: 61.75 bbl	Tool Weight:	2200.00 lb
Heavy Wt. Pipe:	Length: ft	Diameter: 2.75 inches	Volume: - bbl	Weight set on Packer:	25000.00 lb
Drill Collar:	Length: 179.00 ft	Diameter: 2.25 inches	Volume: 0.88 bbl	Weight to Pull Loose:	82000.00 lb
			<u>Total Volume: - bbl</u>	Tool Chased	0.00 ft
Drill Pipe Above KB:	34.00 ft			String Weight: Initial	61000.00 lb
Depth to Top Packer:	4575.00 ft			Final	69000.00 lb
Depth to Bottom Packer:	ft				
Interval between Packers:	23.00 ft				
Tool Length:	51.00 ft				
Number of Packers:	1	Diameter: 6.75 inches			

Tool Comments:

Tool Description	Length (ft)	Serial No.	Position	Depth (ft)	Accum. Lengths
------------------	-------------	------------	----------	------------	----------------

Change Over Sub	1.00			4548.00	
Shut In Tool	5.00			4553.00	
Hydraulic tool	5.00			4558.00	
Jars	5.00			4563.00	
Safety Joint	3.00			4566.00	
Packer	5.00			4571.00	28.00 Bottom Of Top Packer
Packer	4.00			4575.00	
Stubb	1.00			4576.00	
Recorder	0.00	9120	Inside	4576.00	
Recorder	0.00	8934	Outside	4576.00	
Perforations	18.00			4594.00	
Bullnose	4.00			4598.00	23.00 Bottom Packers & Anchor

Total Tool Length: 51.00



**TRILOBITE
TESTING, INC.**

DRILL STEM TEST REPORT

FLUID SUMMARY

Carmen Schmitt, Inc.
PO BOX 47
Great Bend KS 67530+0047
ATTN: Brad Rine

14-23S-21W Hodgeman KS
Gleason #1
Job Ticket: 63042 **DST#: 1**
Test Start: 2017.09.13 @ 08:15:00

Mud and Cushion Information

Mud Type:	Gel Chem	Cushion Type:		Oil API:	40 deg API
Mud Weight:	9.00 lb/gal	Cushion Length:	ft	Water Salinity:	ppm
Viscosity:	58.00 sec/qt	Cushion Volume:	bbbl		
Water Loss:	8.39 in ³	Gas Cushion Type:			
Resistivity:	ohm.m	Gas Cushion Pressure:	psig		
Salinity:	3050.00 ppm				
Filter Cake:	inches				

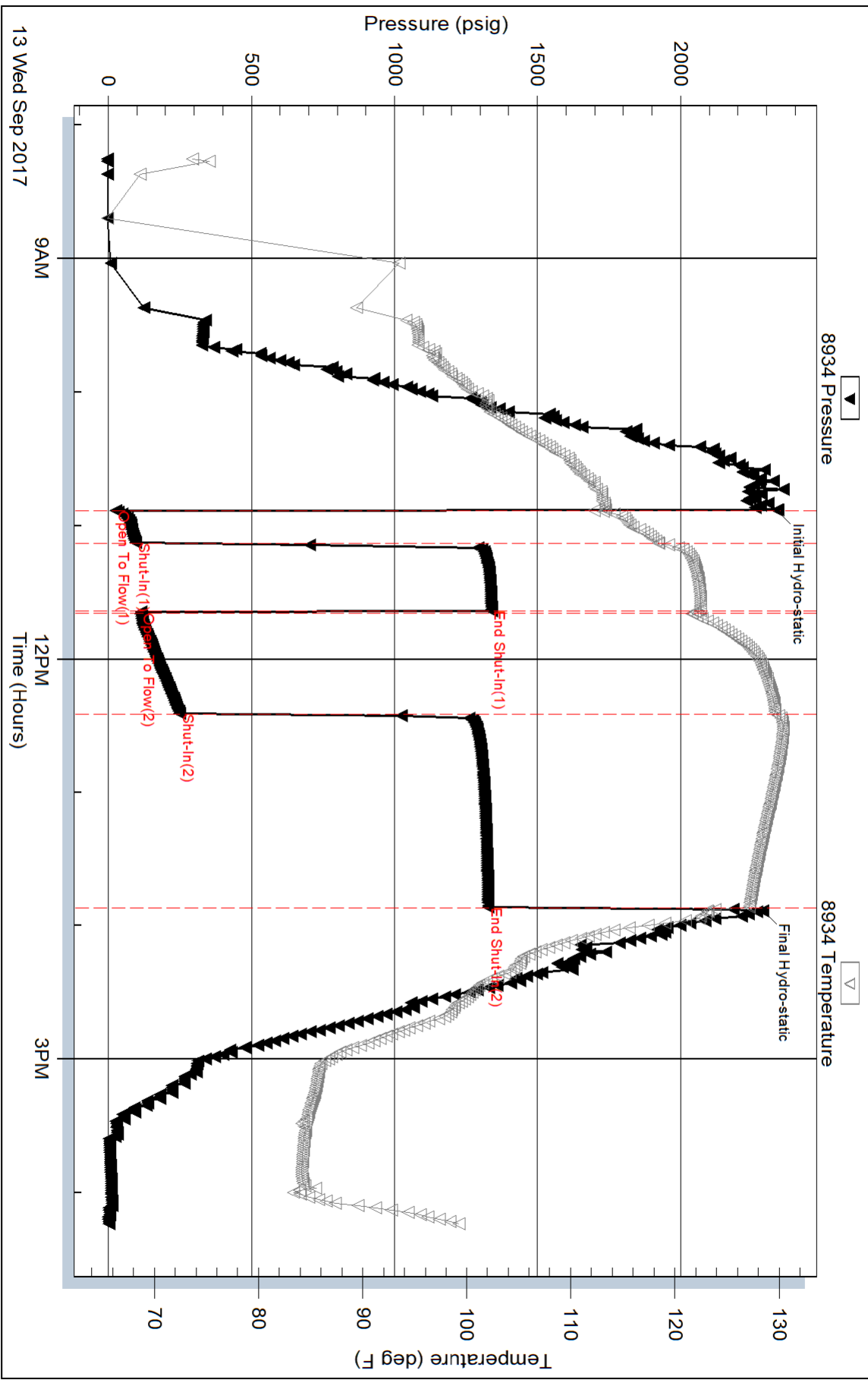
Recovery Information

Recovery Table

Length ft	Description	Volume bbbl
60.00	MCGO 10%M 50%G 40%O	0.295
120.00	Gassy Emulsified Oil 30%G 70%O	0.599
120.00	GO 30%G 70%O	1.683
180.00	GO 50%G 50%O	2.525
80.00	GO 10%G 90%O	1.122
0.00	1640' GIP 100%G	0.000

Total Length: 560.00 ft Total Volume: 6.224 bbl
Num Fluid Samples: 0 Num Gas Bombs: 0 Serial #:
Laboratory Name: Laboratory Location:
Recovery Comments: 1/2#LCM

Pressure vs. Time



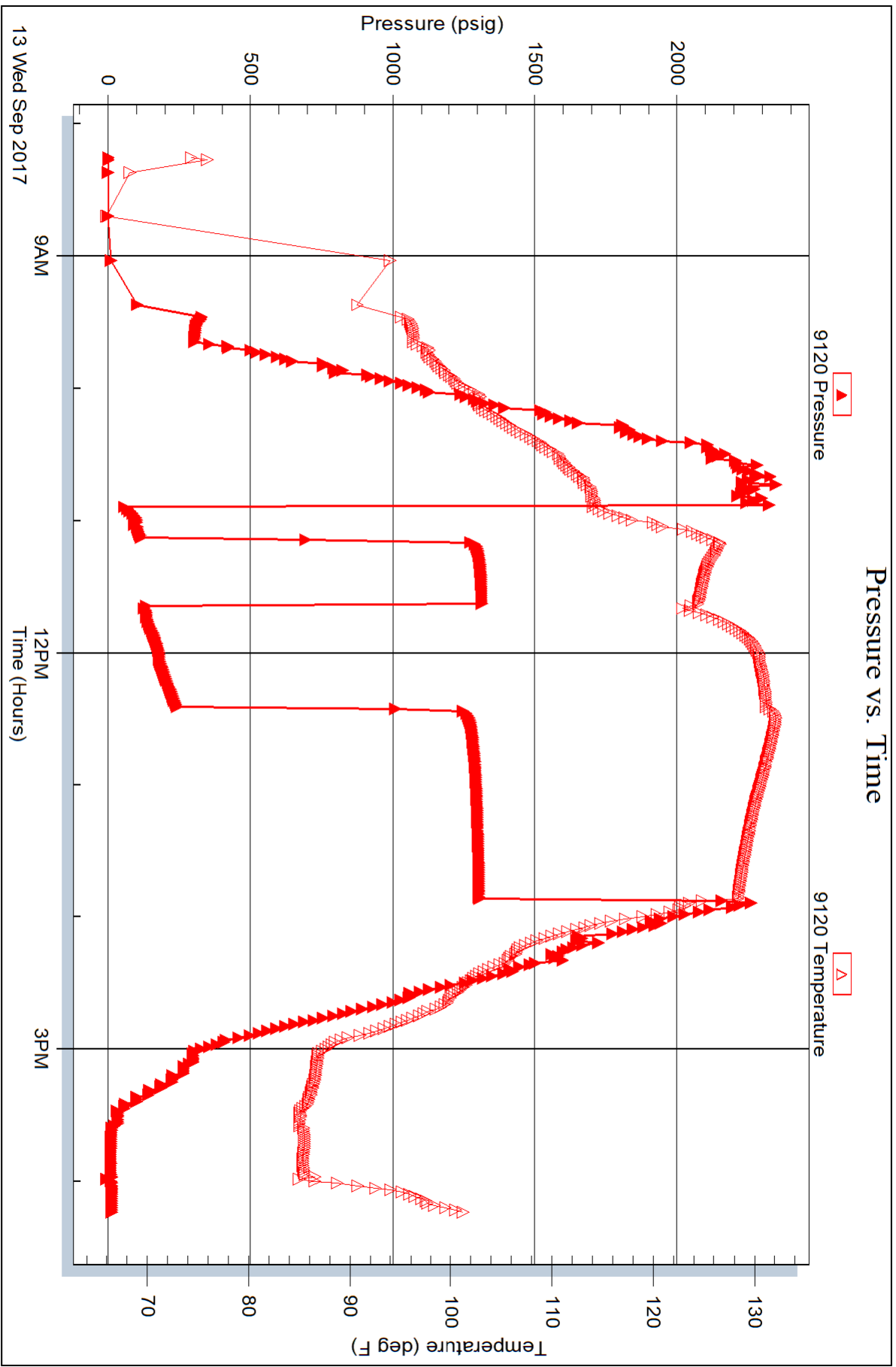
Serial #: 9120

Inside

Carmen Schmitt, Inc.

Gleason #1

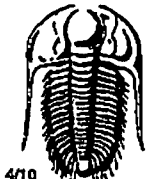
DST Test Number: 1



Triobite Testing, Inc

Ref. No: 63042

Printed: 2017.09.14 @ 08:33:46



TRILOBITE TESTING INC.

1515 Commerce Parkway • Hays, Kansas 67601

Test Ticket

NO. 63042

Well Name & No. Alison #1 Test No. 1 Date 09/13/2017
 Company Carmen Schmitt, Inc Elevation 2334 KB 2329 GL
 Address PO BOX 47 Great Bend Ks 67530 +0047
 Co. Rep / Geo. Brad Rine Rig Murphy #16
 Location: Sec. 14 Twp. 23s Rge. 2W Co. Hodgeman State Ks

Interval Tested 4575' - 4598' Zone Tested Mississippi
 Anchor Length 23' Drill Pipe Run 4402' Mud Wt. 9.3
 Top Packer Depth 4570' Drill Collars Run 179' Vis 58
 Bottom Packer Depth 4575' Wt. Pipe Run - WL 8.4
 Total Depth 4598' Chlorides 3050 ppm System LCM 1/2#

Blow Description 67- Strong Blow; BOB in 7 mins
68- Fair Blow; Built to 5"; died back to 4"
77- Strong Blow; BOB in 3 mins
78- Fair Blow; BOB in 30 mins

Rec	Feet of	%gas	%oil	%water	%mud
60'	MCMO	50	40	10	
120'	Gassy Emulsified Oil	30	70		
120'	Gassy Oil	30	70		
180'	Gassy Oil	50	50		
80'	Gassy Oil	10	90		
Rec Total	560'				

Rec Total 560' BHT 1640' 127° Gravity 40° API RW 100 @ - °F Chlorides - ppm

(A) Initial Hydrostatic 2335 Test _____ T-On Location 06:55
 (B) First Initial Flow 26 Jars _____ T-Started 08:15
 (C) First Final Flow 97 Safety Joint _____ T-Open 10:52
 (D) Initial Shut-In 1340 Circ Sub _____ T-Pulled 13:52
 (E) Second Initial Flow 114 Hourly Standby _____ T-Out 16:12
 (F) Second Final Flow 250 Mileage 150 RT Comments _____
 (G) Final Shut-In 1328 Sampler _____
 (H) Final Hydrostatic 2286 Straddle _____ Ruined Shale Packer _____
 Shale Packer _____ Ruined Packer _____
 Extra Packer _____ Extra Copies _____
 Extra Recorder _____ Sub Total _____
 Day Standby _____ Total _____
 Accessibility _____ MP/DST Disc't _____

Initial Open 15
 Initial Shut-In 30
 Final Flow 45
 Final Shut-In 90
 Approved By _____
 Our Representative Spencer J. Staab Thanks!
 785-259-0056