

Sean Deenihan

Petroleum Geologist

GEOLOGIST'S REPORT

DRILLING TIME AND SAMPLE LOG

COMPANY Triple Crown Operating, LLC

LEASE McJunkin #1-27

FIELD Wildcat

LOCATION 2513' FNL & 475' FWL

SEC 27 TWPSP 20 S RGE 22 W

COUNTY Ness STATE Kansas

CONTRACTOR W.W. Drilling Rigs #8

SPUD 8/15/17 COMP 8/22/16

RTD 4321' LTD 4338'

MUD UP TYPE MUD Chemical

SAMPLES SAVED FROM 3500' TO RTD

DRILLING TIME KEPT FROM 3500' TO RTD

SAMPLES EXAMINED FROM 3500' TO RTD

GEOLOGICAL SUPERVISION FROM 3550'

REFERENCE WELL CND/DL, GR SON Gemini

ELEVATIONS

KB 2176'

DF

GL 2171'

Measurements Are All From Kelly Bushing

CASING

CONDUCTOR SURFACE 8-5/8" at 1397'

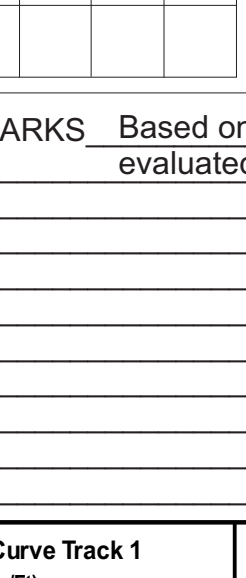
PRODUCTION 5.5" @ TD

ELECTRICAL SURVEYS

Gemini

CND/DL, GR SON

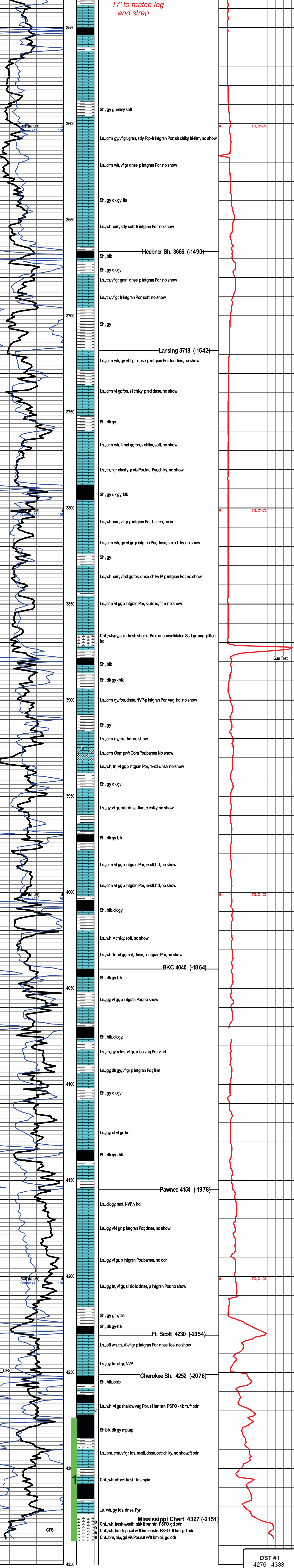
Formation	Sample Tops	E-log Tops	Struct Pos.
B/Ambidrite		1395 (-781)	
Heebner Sh.		3666 (-1490)	
Lansing		3718 (-1542)	
Marraton		4078 (-1902)	
Ft. Scott		4230 (-2054)	
Cherokee Sh.		4252 (-2076)	
Mississippi		4327 (-2151)	



REMARKS Based on sample, log, and DST analysis, the McJunkin#1-27 will be further evaluated through production casing.

Respectfully Submitted,

Sean P. Deenihan



DST #1
 4276' - 4338'
 15-30-15-30"
 IF: BOB 20 Sec
 3" BB
 FF: BOB 10 Sec
 3" BB
 Rec: 2236' GMCO
 (25%G, 65%O, 10%M)
 159' GIP
 IFF: 398-522#
 FFP: 660-758#
 SIP: 1299-1279#
 Dropped Bar -
 Reversed Oil into
 water truck

