



**TRILOBITE  
TESTING, INC.**

# DRILL STEM TEST REPORT

Rama Operating Company Inc.

**34/16S/10W/Elsworth**

101 S Main Street  
Stafford Kansas  
67578

**Schroeder C #9**

Job Ticket: 62647

**DST#: 1**

ATTN: Josh Austin

Test Start: 2017.09.27 @ 16:14:00

## GENERAL INFORMATION:

Formation: **Arbuckle**

Deviated: No Whipstock: ft (KB)

Time Tool Opened: 18:05:02

Time Test Ended: 21:12:17

Test Type: Conventional Bottom Hole (Initial)

Tester: Ken Swinney

Unit No: 72 Great Bend/60

**Interval: 3240.00 ft (KB) To 3278.00 ft (KB) (TVD)**

Reference Elevations: 1839.00 ft (KB)

Total Depth: 3278.00 ft (KB) (TVD)

1828.00 ft (CF)

Hole Diameter: 7.80 inches Hole Condition: Fair

KB to GR/CF: 11.00 ft

**Serial #: 6755 Inside**

Press@RunDepth: 12.01 psig @ 3241.00 ft (KB)

Capacity: psig

Start Date: 2017.09.27 End Date: 2017.09.27

Last Calib.: 2017.09.27

Start Time: 16:14:01 End Time: 21:12:17

Time On Btm: 2017.09.27 @ 18:04:32

Time Off Btm: 2017.09.27 @ 19:35:32

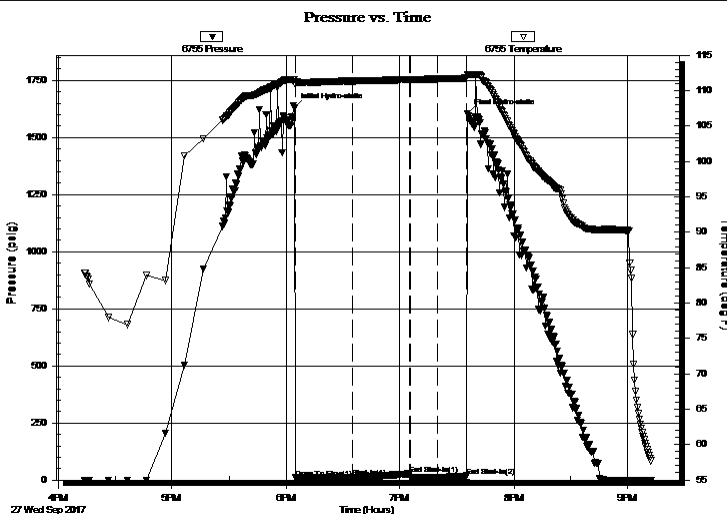
TEST COMMENT: I.F. 30 Minutes/ Weak surface blow died in 7 1/2 minutes

I.S.I. 30 Minutes/ No blow back

F.F. 15 Minutes/ Dead no blow

F.S.I. 15 Minutes/ No blow back

## PRESSURE SUMMARY



Time (Min.)	Pressure (psig)	Temp (deg F)	Annotation
0	1629.18	111.58	Initial Hydro-static
1	10.00	110.85	Open To Flow (1)
31	11.68	111.37	Shut-In(1)
61	27.30	111.56	End Shut-In(1)
61	12.00	111.57	Open To Flow (2)
76	12.01	111.67	Shut-In(2)
91	18.00	111.83	End Shut-In(2)
91	1605.20	112.23	Final Hydro-static

## Recovery

Length (ft)	Description	Volume (bbl)
1.00	Mud 100%	0.00

## Gas Rates

Choke (inches)	Pressure (psig)	Gas Rate (Mcf/d)



**TRILOBITE  
TESTING, INC.**

# DRILL STEM TEST REPORT

Rama Operating Company Inc.

**34/16S/10W/Elsworth**

101 S Main Street  
Stafford Kansas  
67578

**Schroeder C #9**

Job Ticket: 62647

**DST#: 1**

ATTN: Josh Austin

Test Start: 2017.09.27 @ 16:14:00

## GENERAL INFORMATION:

Formation: **Arbuckle**

Deviated: No Whipstock: ft (KB)

Time Tool Opened: 18:05:02

Time Test Ended: 21:12:17

Test Type: Conventional Bottom Hole (Initial)

Tester: Ken Swinney

Unit No: 72 Great Bend/60

**Interval: 3240.00 ft (KB) To 3278.00 ft (KB) (TVD)**

Reference Elevations: 1839.00 ft (KB)

Total Depth: 3278.00 ft (KB) (TVD)

1828.00 ft (CF)

Hole Diameter: 7.80 inches Hole Condition: Fair

KB to GR/CF: 11.00 ft

**Serial #: 8322 Outside**

Press@RunDepth: 19.25 psig @ 3242.00 ft (KB)

Capacity: psig

Start Date: 2017.09.27 End Date: 2017.09.27

Last Calib.: 2017.09.27

Start Time: 16:14:01 End Time: 21:12:17

Time On Btm: 2017.09.27 @ 18:04:32

Time Off Btm: 2017.09.27 @ 19:35:47

**TEST COMMENT:** I.F. 30 Minutes/ Weak surface blow died in 7 1/2 minutes

I.S.I. 30 Minutes/ No blow back

F.F. 15 Minutes/ Dead no blow

F.S.I. 15 Minutes/ No blow back

## PRESSURE SUMMARY

Time (Min.)	Pressure (psig)	Temp (deg F)	Annotation
0	1630.13	111.13	Initial Hydro-static
1	11.66	110.52	Open To Flow (1)
31	13.00	111.02	Shut-In(1)
61	29.04	111.24	End Shut-In(1)
61	13.54	111.24	Open To Flow (2)
76	13.55	111.34	Shut-In(2)
91	19.25	111.50	End Shut-In(2)
92	1600.88	111.88	Final Hydro-static

## Recovery

Length (ft)	Description	Volume (bbl)
1.00	Mud 100%	0.00

## Gas Rates

	Choke (inches)	Pressure (psig)	Gas Rate (Mcf/d)



**TRILOBITE  
TESTING, INC.**

# DRILL STEM TEST REPORT

**FLUID SUMMARY**

Rama Operating Company Inc.

**34/16S/10W/Ellsworth**

101 S Main Street  
Stafford Kansas  
67578

**Schroeder C #9**

Job Ticket: 62647

**DST#: 1**

ATTN: Josh Austin

Test Start: 2017.09.27 @ 16:14:00

## Mud and Cushion Information

Mud Type: Gel Chem

Cushion Type:

Oil API:

deg API

Mud Weight: 9.00 lb/gal

Cushion Length:

ft

Water Salinity:

ppm

Viscosity: 55.00 sec/qt

Cushion Volume:

bbbl

Water Loss: 7.99 in<sup>3</sup>

Gas Cushion Type:

Resistivity: ohm.m

Gas Cushion Pressure:

psig

Salinity: 5500.00 ppm

Filter Cake: 1.00 inches

## Recovery Information

Recovery Table

Length ft	Description	Volume bbl
1.00	Mud 100%	0.005

Total Length: 1.00 ft      Total Volume: 0.005 bbl

Num Fluid Samples: 0

Num Gas Bombs: 0

Serial #:

Laboratory Name:

Laboratory Location:

Recovery Comments:

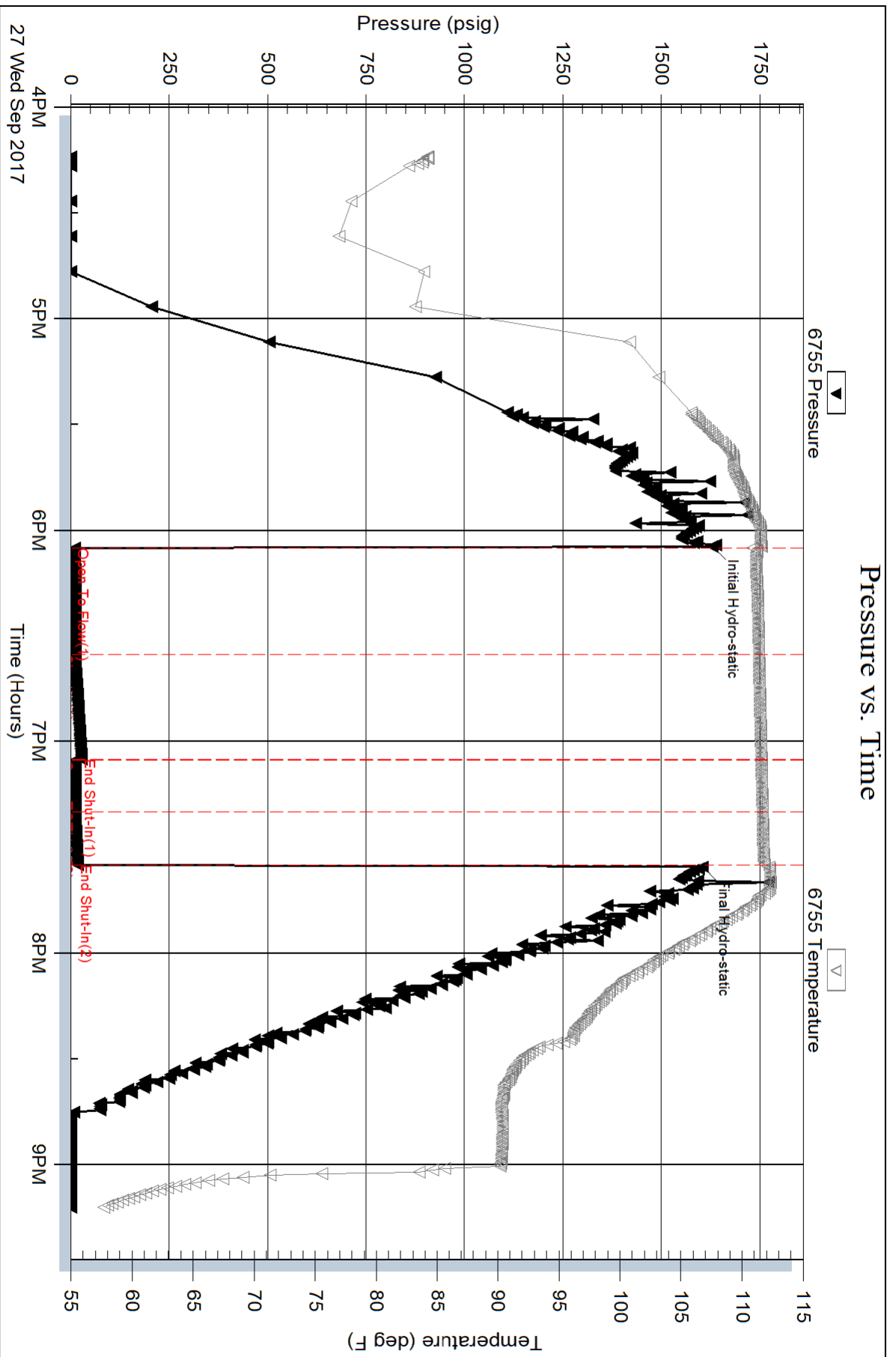
Serial #: 6755

Inside

Rama Operating Company Inc.

Schroeder C#9

DST Test Number: 1



Triobite Testing, Inc

Ref. No: 62647

Printed: 2017.09.27 @ 21:59:10

