



**TRILOBITE
TESTING, INC.**

DRILL STEM TEST REPORT

Rama Operating Company Inc.

34/16S/10W/Elsworth

101 S Main Street
Stafford Kansas
67578

Schroeder C #9

Job Ticket: 62648

DST#: 2

ATTN: Josh Austin

Test Start: 2017.09.28 @ 02:42:00

GENERAL INFORMATION:

Formation: **Arbuckle**

Deviated: No Whipstock: ft (KB)

Time Tool Opened: 04:11:32

Time Test Ended: 08:54:02

Test Type: Conventional Bottom Hole (Initial)

Tester: Ken Swinney

Unit No: 72 Great Bend/60

Interval: 3278.00 ft (KB) To 3284.00 ft (KB) (TVD)

Reference Elevations: 1839.00 ft (KB)

Total Depth: 3284.00 ft (KB) (TVD)

1828.00 ft (CF)

Hole Diameter: 7.80 inches Hole Condition: Fair

KB to GR/CF: 11.00 ft

Serial #: 6755

Inside

Press@RunDepth: 234.11 psig @ 3280.00 ft (KB)

Capacity: psig

Start Date: 2017.09.28

End Date:

2017.09.28

Last Calib.:

2017.09.28

Start Time: 02:42:01

End Time:

08:54:02

Time On Btm:

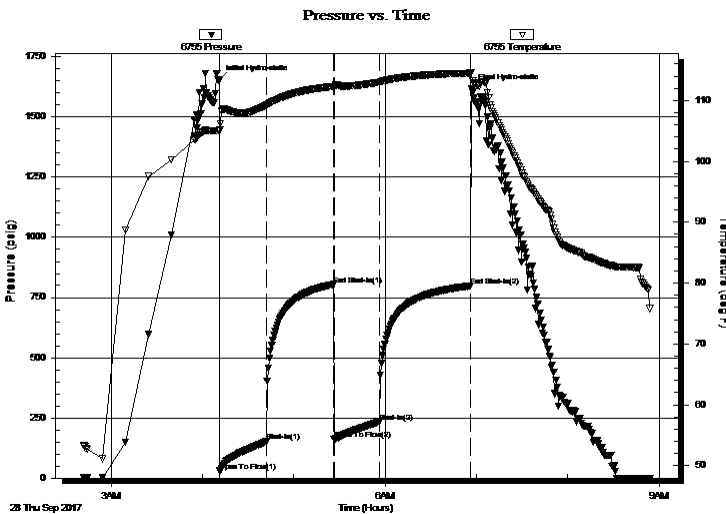
2017.09.28 @ 04:11:17

Time Off Btm:

2017.09.28 @ 06:56:47

TEST COMMENT: I.F. 30 Minutes/ Blow built to BOB in 4 minutes
I.S.I. 45 Minutes/ 2 inch blow back
F.F. 30 Minutes/ Blow built to BOB in 8 minutes
F.F. 60 Minutes/ No blow back

PRESSURE SUMMARY



Time (Min.)	Pressure (psig)	Temp (deg F)	Annotation
0	1654.88	105.06	Initial Hydro-static
1	30.07	105.10	Open To Flow (1)
31	151.21	109.15	Shut-In(1)
75	803.76	112.31	End Shut-In(1)
76	161.06	112.07	Open To Flow (2)
105	234.11	112.99	Shut-In(2)
165	798.72	114.46	End Shut-In(2)
166	1617.19	114.60	Final Hydro-static

Recovery

Length (ft)	Description	Volume (bbl)
62.00	Mud cut gassy Oil	0.30
0.00	Mud 20% Gas 20% Oil 60%	0.00
589.00	Gassy Oil	6.91
0.00	Gas 30% Oil 70%	0.00
0.00	403 feet of GIP	0.00

Gas Rates

Choke (inches)	Pressure (psig)	Gas Rate (Mcf/d)



TRILOBITE TESTING, INC.

DRILL STEM TEST REPORT

Rama Operating Company Inc.

34/16S/10W/Elsworth

101 S Main Street
Stafford Kansas
67578

Schroeder C #9

Job Ticket: 62648

DST#: 2

ATTN: Josh Austin

Test Start: 2017.09.28 @ 02:42:00

GENERAL INFORMATION:

Formation: **Arbuckle**

Deviated: No Whipstock: ft (KB)

Time Tool Opened: 04:11:32

Time Test Ended: 08:54:02

Test Type: Conventional Bottom Hole (Initial)

Tester: Ken Swinney

Unit No: 72 Great Bend/60

Interval: 3278.00 ft (KB) To 3284.00 ft (KB) (TVD)

Reference Elevations: 1839.00 ft (KB)

Total Depth: 3284.00 ft (KB) (TVD)

1828.00 ft (CF)

Hole Diameter: 7.80 inches Hole Condition: Fair

KB to GR/CF: 11.00 ft

Serial #: 8322 Outside

Press@RunDepth: 800.58 psig @ 3281.00 ft (KB)

Capacity: psig

Start Date: 2017.09.28

End Date: 2017.09.28

Last Calib.: 2017.09.28

Start Time: 02:42:01

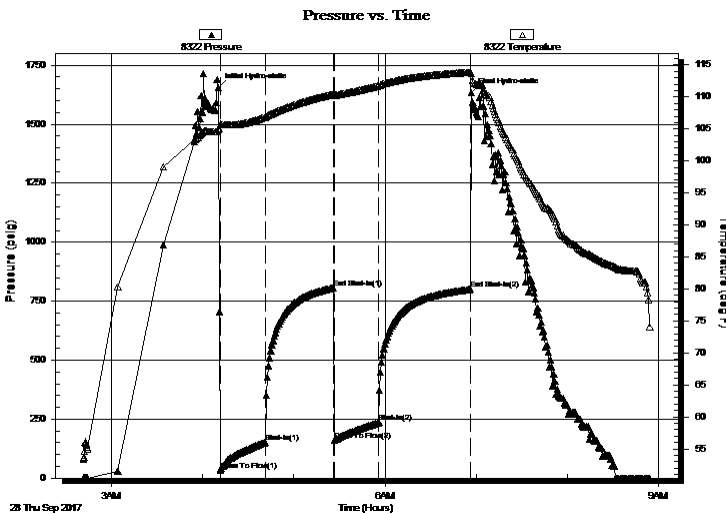
End Time: 08:54:02

Time On Btm: 2017.09.28 @ 04:10:47

Time Off Btm: 2017.09.28 @ 06:57:02

TEST COMMENT: I.F. 30 Minutes/ Blow built to BOB in 4 minutes
I.S.I. 45 Minutes/ 2 inch blow back
F.F. 30 Minutes/ Blow built to BOB in 8 minutes
F.F. 60 Mintues/ No blow back

PRESSURE SUMMARY



Time (Min.)	Pressure (psig)	Temp (deg F)	Annotation
0	1653.91	105.01	Initial Hydro-static
1	34.41	105.65	Open To Flow (1)
31	153.40	106.89	Shut-In(1)
76	805.61	110.37	End Shut-In(1)
76	161.32	110.30	Open To Flow (2)
106	236.14	111.78	Shut-In(2)
166	800.58	113.84	End Shut-In(2)
167	1634.84	113.70	Final Hydro-static

Recovery

Length (ft)	Description	Volume (bbl)
62.00	Mud cut gassy Oil	0.30
0.00	Mud 20% Gas 20% Oil 60%	0.00
589.00	Gassy Oil	6.91
0.00	Gas 30% Oil 70%	0.00
0.00	403 feet of GIP	0.00

Gas Rates

Choke (inches)	Pressure (psig)	Gas Rate (Mcf/d)



**TRILOBITE
TESTING, INC.**

DRILL STEM TEST REPORT

FLUID SUMMARY

Rama Operating Company Inc.

34/16S/10W/Ellsworth

101 S Main Street
Stafford Kansas
67578

Schroeder C #9

Job Ticket: 62648

DST#: 2

ATTN: Josh Austin

Test Start: 2017.09.28 @ 02:42:00

Mud and Cushion Information

Mud Type: Gel Chem

Cushion Type:

Oil API:

44 deg API

Mud Weight: 9.00 lb/gal

Cushion Length:

ft

Water Salinity:

ppm

Viscosity: 55.00 sec/qt

Cushion Volume:

bbbl

Water Loss: 7.99 in³

Gas Cushion Type:

Resistivity: ohm.m

Gas Cushion Pressure:

psig

Salinity: 5500.00 ppm

Filter Cake: 1.00 inches

Recovery Information

Recovery Table

Length ft	Description	Volume bbl
62.00	Mud cut gassy Oil	0.305
0.00	Mud 20% Gas 20% Oil 60%	0.000
589.00	Gassy Oil	6.914
0.00	Gas 30% Oil 70%	0.000
0.00	403 feet of GIP	0.000

Total Length: 651.00 ft

Total Volume: 7.219 bbl

Num Fluid Samples: 0

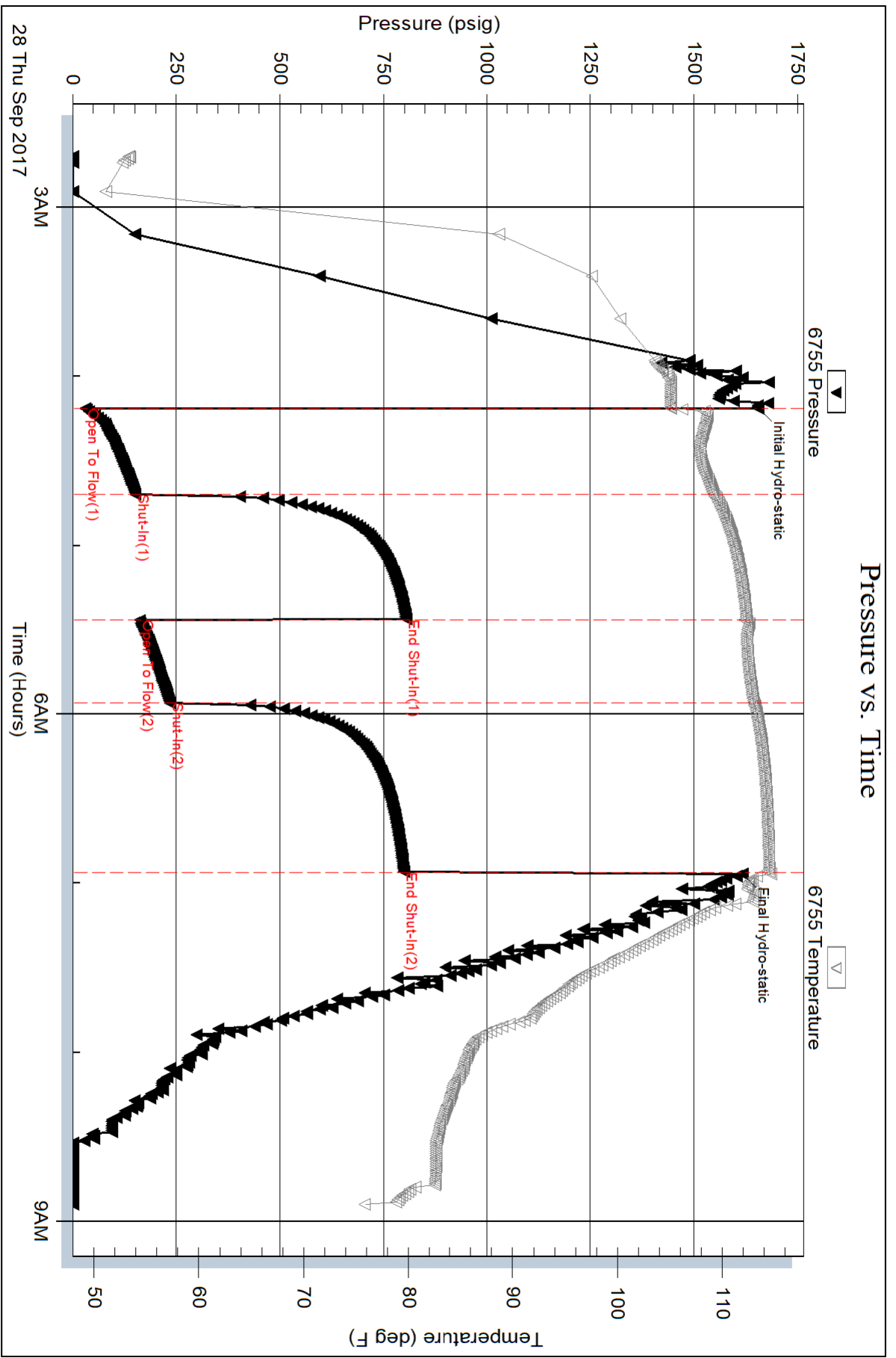
Num Gas Bombs: 0

Serial #:

Laboratory Name:

Laboratory Location:

Recovery Comments:



Pressure vs. Time

