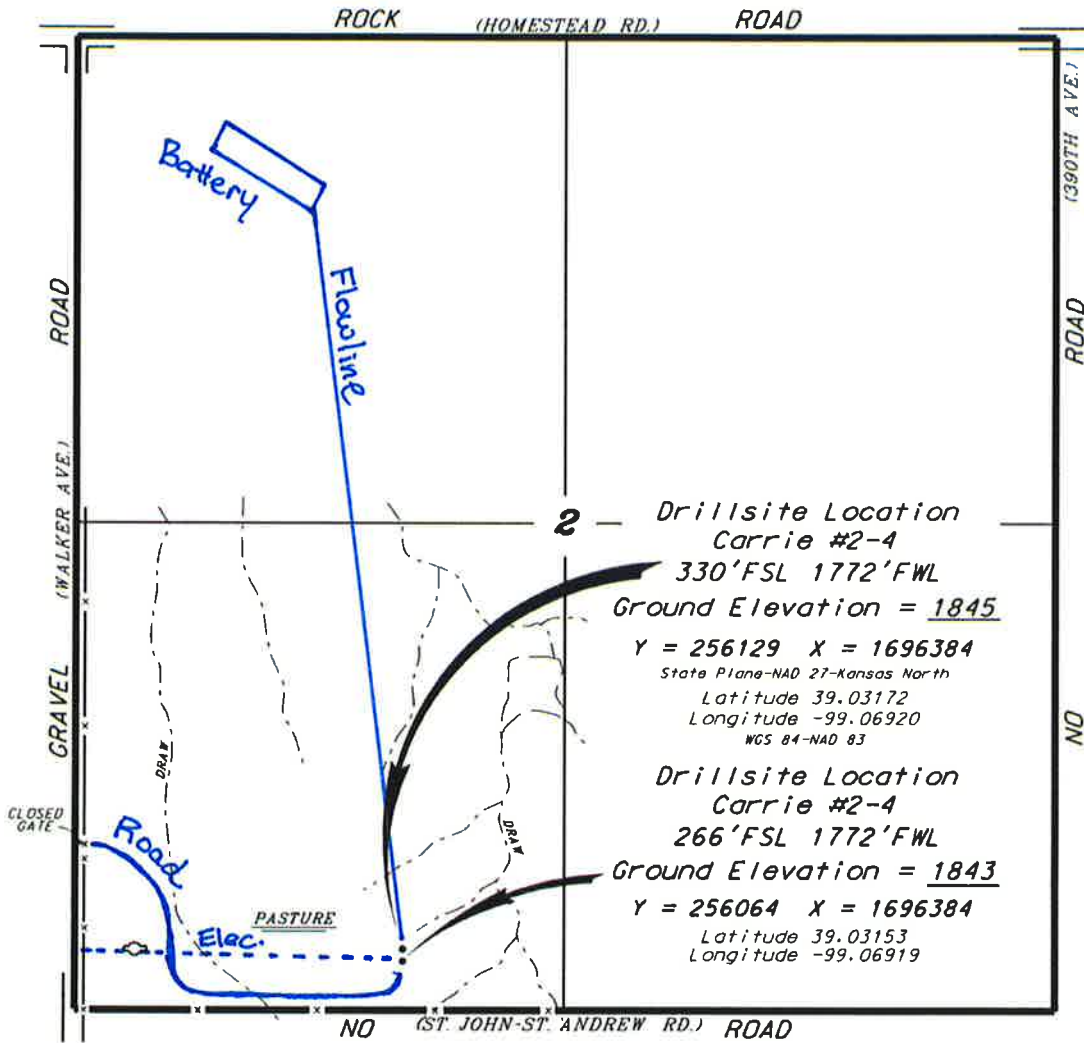


IA OPERATING, INC.
 CARRIE LEASE
 SW. 1/4, SECTION 2, T12S, R16W
 ELLIS COUNTY, KANSAS

* Ingress and egress to location as shown on this plot is per usage only and may not be legally opened for public use. Contact landowner, tenant and county road department for access.



2 — Drillsite Location
 Carrie #2-4
 330'FSL 1772'FWL
 Ground Elevation = 1845

Y = 256129 X = 1696384
 State Plane-NAD 27-Kansas North
 Latitude 39.03172
 Longitude -99.06920
 NGS 84-NAD 83

Drillsite Location
 Carrie #2-4
 266'FSL 1772'FWL
 Ground Elevation = 1843

Y = 256064 X = 1696384
 Latitude 39.03153
 Longitude -99.06919



LEGEND

- Well Location
- Tank Battery Location
- Pipeline Location
- - - - - Electric Line Location
- ▬ Lease Road Location

• Controlling data is based upon the best maps and photographs available to us and upon a regular section of land containing 640 acres.
 • Approximate section lines were determined using the normal standard of care of oilfield surveyors practicing in the state of Kansas. The section corners, which establish the precise section lines, were not necessarily located, and the exact location of the drillsite location in the section is not guaranteed; therefore, the operator, securing this service and accepting this plot and all other parties relying thereon agree to hold Central Kansas Oilfield Services, Inc., its officers and employees harmless from all losses, costs and expenses and said entities released from any liability from incidental or consequential damages.
 • Elevations derived from National Geodetic Vertical Datum.

Date July 19, 2018