



TEMPORARY ABANDONMENT WELL APPLICATION

OPERATOR: License# _____
 Name: _____
 Address 1: _____
 Address 2: _____
 City: _____ State: _____ Zip: _____ + _____
 Contact Person: _____
 Phone: (_____) _____
 Contact Person Email: _____
 Field Contact Person: _____
 Field Contact Person Phone: (_____) _____

API No. 15- _____
 Spot Description: _____
 _____ - _____ - _____ - _____ Sec. _____ Twp. _____ S. R. _____ E W
 _____ feet from N / S Line of Section
 _____ feet from E / W Line of Section
 GPS Location: Lat: _____, Long: _____
(e.g. xx.xxxxx) (e.g. -xxx.xxxxx)
 Datum: NAD27 NAD83 WGS84
 County: _____ Elevation: _____ GL KB
 Lease Name: _____ Well #: _____
 Well Type: (check one) Oil Gas OG WSW Other: _____
 SWD Permit #: _____ ENHR Permit #: _____
 Gas Storage Permit #: _____
 Spud Date: _____ Date Shut-In: _____

| | Conductor | Surface | Production | Intermediate | Liner | Tubing |
|------------------|-----------|---------|------------|--------------|-------|--------|
| Size | | | | | | |
| Setting Depth | | | | | | |
| Amount of Cement | | | | | | |
| Top of Cement | | | | | | |
| Bottom of Cement | | | | | | |

Casing Fluid Level from Surface: _____ How Determined? _____ Date: _____
 Casing Squeeze(s): _____ to _____ w / _____ sacks of cement, _____ to _____ w / _____ sacks of cement. Date: _____
(top) (bottom) (top) (bottom)
 Do you have a valid Oil & Gas Lease? Yes No
 Depth and Type: Junk in Hole at _____ Tools in Hole at _____ Casing Leaks: Yes No Depth of casing leak(s): _____
(depth) (depth)
 Type Completion: ALT. I ALT. II Depth of: DV Tool: _____ w / _____ sacks of cement Port Collar: _____ w / _____ sack of cement
(depth) (depth)
 Packer Type: _____ Size: _____ Inch Set at: _____ Feet
 Total Depth: _____ Plug Back Depth: _____ Plug Back Method: _____

Geological Data:

| Formation Name | Formation Top | Formation Base | Completion Information |
|----------------|-------------------------|--|------------------------|
| 1. _____ | At: _____ to _____ Feet | Perforation Interval _____ to _____ Feet or Open Hole Interval _____ to _____ Feet | |
| 2. _____ | At: _____ to _____ Feet | Perforation Interval _____ to _____ Feet or Open Hole Interval _____ to _____ Feet | |

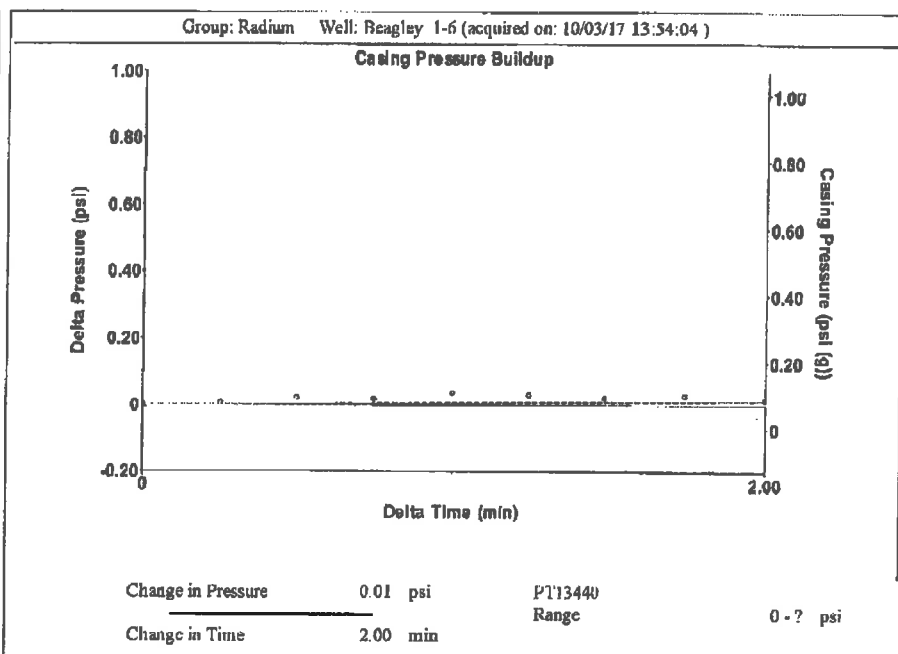
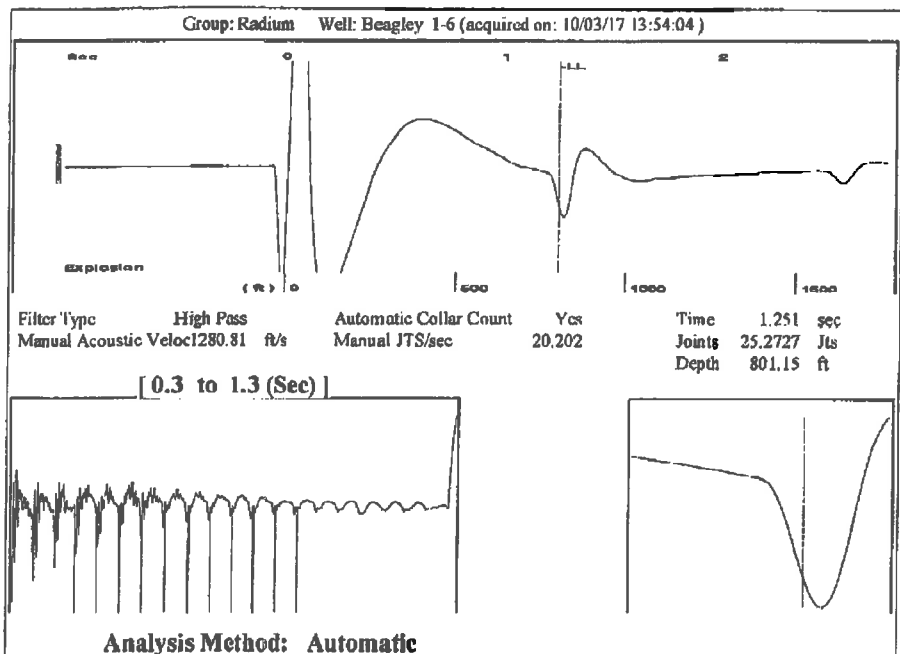
UNDER PENALTY OF PERJURY I HEREBY ATTEST THAT THE INFORMATION CONTAINED HEREIN IS TRUE AND CORRECT TO THE BEST OF MY KNOWLEDGE

Submitted Electronically

| | | | | | |
|---|--|----------------|---------------------|----------------------|---------------------------------|
| Do NOT Write in This Space - KCC USE ONLY | Date Tested: _____ | Results: _____ | Date Plugged: _____ | Date Repaired: _____ | Date Put Back in Service: _____ |
| | Review Completed by: _____ Comments: _____ | | | | |
| TA Approved: <input type="checkbox"/> Yes <input type="checkbox"/> Denied Date: _____ | | | | | |

Mail to the Appropriate KCC Conservation Office:

| | | |
|--|--|--------------------|
| | KCC District Office #1 - 210 E. Frontview, Suite A, Dodge City, KS 67801 | Phone 620.682.7933 |
| | KCC District Office #2 - 3450 N. Rock Road, Building 600, Suite 601, Wichita, KS 67226 | Phone 316.337.7400 |
| | KCC District Office #3 - 137 E. 21st St., Chanute, KS 66720 | Phone 620.902.6450 |
| | KCC District Office #4 - 2301 E. 13th Street, Hays, KS 67601-2651 | Phone 785.261.6250 |



Group: Radium Well: Beagley 1-6 (acquired on: 10/03/17 13:54:04)

| | | | |
|--|------------|-------------------------------|------------------|
| Production Current | Potential | Casing Pressure | Producing |
| Oil -*- BBL/D | -*- BBL/D | 0.1 psi (g) | Annular Gas Flow |
| Water -*- BBL/D | -*- BBL/D | Casing Pressure Buildup | 0 Mscf/D |
| Gas -*- Mscf/D | -*- Mscf/D | 0.015 psi | % Liquid |
| | | 2.00 min | 100 % |
| IPR Method: Vogel | | Gas/Liquid Interface Pressure | |
| PBHP/SBHP: -*- | | 0.4 psi (g) | |
| Production Efficiency: 0.0 | | Liquid Level Depth | |
| Oil 40 deg.API | | 801.15 ft | |
| Water 1.05 Sp.Gr.H2O | | Pump Intake Depth | |
| Gas 0.71 Sp.Gr.AIR | | 1810.00 ft | |
| Acoustic Velocity 1280.81 ft/s | | Formation Depth | |
| | | 1830.00 ft | |
| Formation Submergence | | | Pump Intake |
| Total Gaseous Liquid Column HT (TVD) 1009 ft | | | 342.3 psi (g) |
| Equivalent Gas Free Liquid HT (TVD) 1009 ft | | | Producing BHP |
| | | | 351.4 psi (g) |
| | | | Static BHP |
| | | | -* - psi (g) |
| Acoustic Test | | | |

Group: Radium Well: Beagley 1-6 (acquired on: 10/03/17 13:54:04)

No Collar Count Data Available

October 10, 2017

Loveness Mpanje
F. G. Holl Company L.L.C.
9431 E CENTRAL STE 100
WICHITA, KS 67206-2563

Re: Temporary Abandonment
API 15-185-23286-00-01
BEAGLEY B 1-6
SW/4 Sec.06-21S-14W
Stafford County, Kansas

Dear Loveness Mpanje:

"Your temporary abandonment (TA) application for the well listed above has been approved. In accordance with K.A.R. 82-3-111 the TA status of this well will expire 10/10/2018.

- * If you return this well to service or plug it, please notify the District Office.
- * If you sell this well you are required to file a Transfer of Operator form, T-1.
- * If the well will remain temporarily abandoned, you must submit a new TA application, CP-111, before 10/10/2018.

You may contact me at the number above if you have questions.

Very truly yours,

Michael Maier"