



# TEMPORARY ABANDONMENT WELL APPLICATION

OPERATOR: License# \_\_\_\_\_  
 Name: \_\_\_\_\_  
 Address 1: \_\_\_\_\_  
 Address 2: \_\_\_\_\_  
 City: \_\_\_\_\_ State: \_\_\_\_\_ Zip: \_\_\_\_\_ + \_\_\_\_\_  
 Contact Person: \_\_\_\_\_  
 Phone: ( \_\_\_\_\_ ) \_\_\_\_\_  
 Contact Person Email: \_\_\_\_\_  
 Field Contact Person: \_\_\_\_\_  
 Field Contact Person Phone: ( \_\_\_\_\_ ) \_\_\_\_\_

API No. 15- \_\_\_\_\_  
 Spot Description: \_\_\_\_\_  
 \_\_\_\_\_ - \_\_\_\_\_ - \_\_\_\_\_ - \_\_\_\_\_ Sec. \_\_\_\_\_ Twp. \_\_\_\_\_ S. R. \_\_\_\_\_  E  W  
 \_\_\_\_\_ feet from  N /  S Line of Section  
 \_\_\_\_\_ feet from  E /  W Line of Section  
 GPS Location: Lat: \_\_\_\_\_, Long: \_\_\_\_\_  
(e.g. xx.xxxxx) (e.g. -xxx.xxxxx)  
 Datum:  NAD27  NAD83  WGS84  
 County: \_\_\_\_\_ Elevation: \_\_\_\_\_  GL  KB  
 Lease Name: \_\_\_\_\_ Well #: \_\_\_\_\_  
 Well Type: (check one)  Oil  Gas  OG  WSW  Other: \_\_\_\_\_  
 SWD Permit #: \_\_\_\_\_  ENHR Permit #: \_\_\_\_\_  
 Gas Storage Permit #: \_\_\_\_\_  
 Spud Date: \_\_\_\_\_ Date Shut-In: \_\_\_\_\_

	Conductor	Surface	Production	Intermediate	Liner	Tubing
Size						
Setting Depth						
Amount of Cement						
Top of Cement						
Bottom of Cement						

Casing Fluid Level from Surface: \_\_\_\_\_ How Determined? \_\_\_\_\_ Date: \_\_\_\_\_  
 Casing Squeeze(s): \_\_\_\_\_ to \_\_\_\_\_ w / \_\_\_\_\_ sacks of cement, \_\_\_\_\_ to \_\_\_\_\_ w / \_\_\_\_\_ sacks of cement. Date: \_\_\_\_\_  
(top) (bottom) (top) (bottom)  
 Do you have a valid Oil & Gas Lease?  Yes  No  
 Depth and Type:  Junk in Hole at \_\_\_\_\_  Tools in Hole at \_\_\_\_\_ Casing Leaks:  Yes  No Depth of casing leak(s): \_\_\_\_\_  
(depth) (depth)  
 Type Completion:  ALT. I  ALT. II Depth of:  DV Tool: \_\_\_\_\_ w / \_\_\_\_\_ sacks of cement  Port Collar: \_\_\_\_\_ w / \_\_\_\_\_ sack of cement  
(depth) (depth)  
 Packer Type: \_\_\_\_\_ Size: \_\_\_\_\_ Inch Set at: \_\_\_\_\_ Feet  
 Total Depth: \_\_\_\_\_ Plug Back Depth: \_\_\_\_\_ Plug Back Method: \_\_\_\_\_

**Geological Data:**

Formation Name	Formation Top	Formation Base	Completion Information
1. _____	At: _____	to _____ Feet	Perforation Interval _____ to _____ Feet or Open Hole Interval _____ to _____ Feet
2. _____	At: _____	to _____ Feet	Perforation Interval _____ to _____ Feet or Open Hole Interval _____ to _____ Feet

UNDER PENALTY OF PERJURY I HEREBY ATTEST THAT THE INFORMATION CONTAINED HEREIN IS TRUE AND CORRECT TO THE BEST OF MY KNOWLEDGE

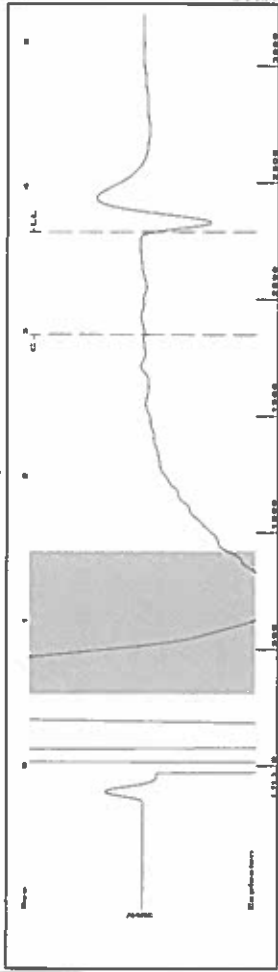
Submitted Electronically

<b>Do NOT Write in This Space - KCC USE ONLY</b>	Date Tested: _____	Results: _____	Date Plugged: _____	Date Repaired: _____	Date Put Back in Service: _____
	Review Completed by: _____ Comments: _____				
TA Approved: <input type="checkbox"/> Yes <input type="checkbox"/> Denied Date: _____					

**Mail to the Appropriate KCC Conservation Office:**

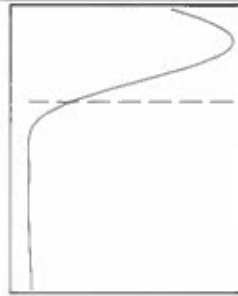
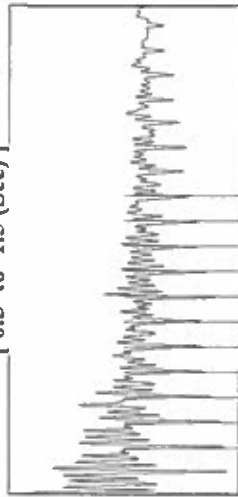
	KCC District Office #1 - 210 E. Frontview, Suite A, Dodge City, KS 67801	Phone 620.682.7933
	KCC District Office #2 - 3450 N. Rock Road, Building 600, Suite 601, Wichita, KS 67226	Phone 316.337.7400
	KCC District Office #3 - 137 E. 21st St., Chanute, KS 66720	Phone 620.902.6450
	KCC District Office #4 - 2301 E. 13th Street, Hays, KS 67601-2651	Phone 785.261.6250

Group: TAD Well: Shaaf A-1 (acquired on: 09/20/16 08:40:04 )



Filter Type High Pass Automatic Collar Count Yes Time 3.691 sec  
 Manual Acoustic Velo 1223.94 ft/s Manual JTS/sec 19.305 Joints 72.2389 Jts  
 Depth 2289.97 ft

[ 0.5 to 1.5 (Sec) ]

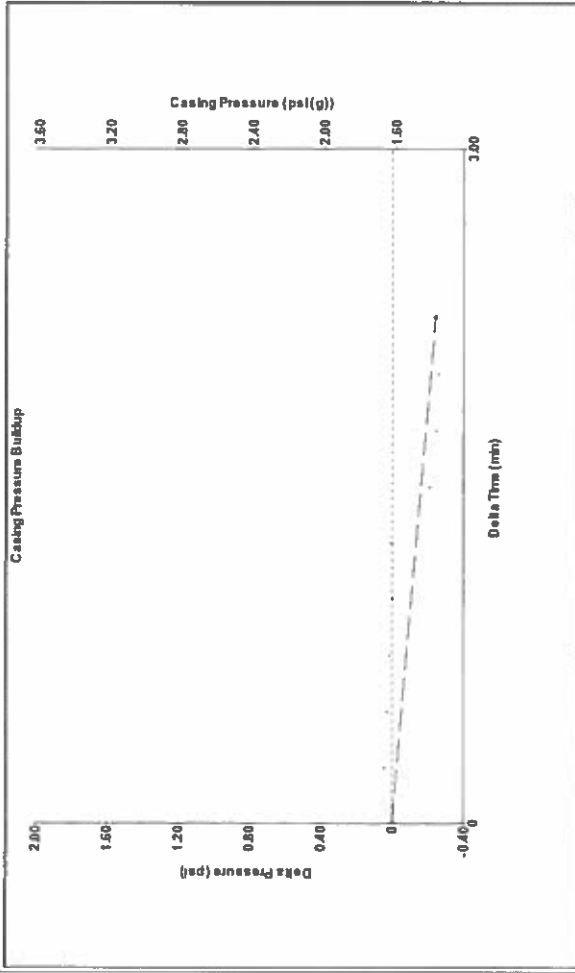


Analysis Method: Automatic

Group: TAD Well: Shaaf A-1 (acquired on: 09/20/16 08:40:04 )

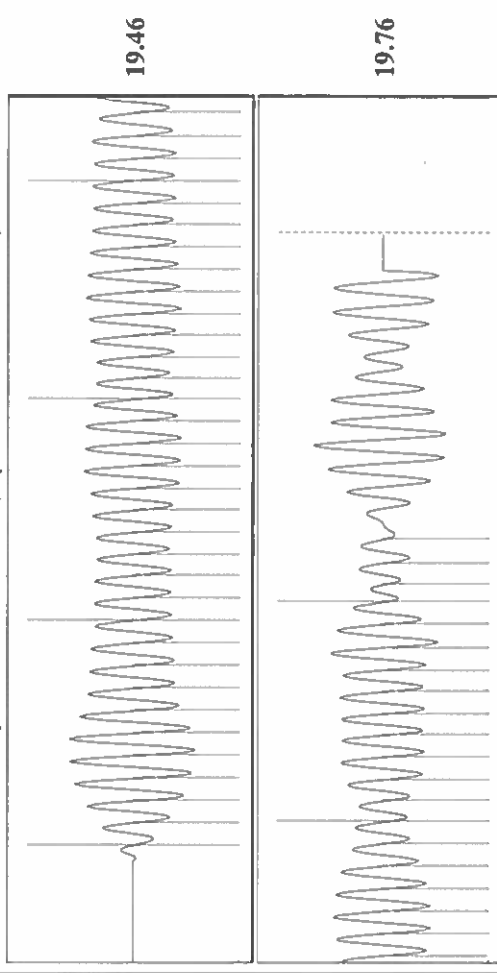
Production	Potential	Casing Pressure	Producing
Oil - *	BBL/D	1.6 psi (g)	Annular Gas Flow 0 Mscf/D
Water - *	BBL/D	Casing Pressure Buildup -0.244 psi	% Liquid 100 %
Gas - *	Mscf/D	2.25 min	
IPR Method Vogel	Gas/Liquid Interface Pressure	2.6 psi (g)	Pump Intake 117.7 psi (g)
PBHP/SBHP - *			Producing BHIP 117.7 psi (g)
Production Efficiency 0.0	Liquid Level Depth 2289.97 ft		Static BHP - * - psi (g)
Oil 40 deg API	Pump Intake Depth 2629.00 ft		
Water 1.05 Sp.Gr.H2O	Formation Depth 2629.00 ft		
Gas 0.76 Sp.Gr.AIR			
Acoustic Velocity 1240.84 ft/s			
Formation Submergence			
Total Gaseous Liquid Column HIT (TVD) 339 ft			
Equivalent Gas Free Liquid HIT (TVD) 339 ft			
Acoustic Test			

Group: TAD Well: Shaaf A-1 (acquired on: 09/20/16 08:40:04 )



Change in Pressure -0.24 psi PT8746 Range  
 Change in Time 2.25 min

Group: TAD Well: Shaaf A-1 (acquired on: 09/20/16 08:40:04 )



Acoustic Velocity 1240.84 ft/s Joints counted 53  
 Joints Per Second 19.5716 Jts/sec 72.2389  
 Depth to liquid level 2289.97 ft Filler Width 17.305  
 Automatic Collar Count Yes Time to 1st Collar 0.272 2.98

October 31, 2017

Katherine McClurkan  
Merit Energy Company, LLC  
13727 Noel Road, Suite 1200  
Dallas, TX 75240

Re: Temporary Abandonment  
API 15-093-00065-00-00  
Schaaf A 1  
NE/4 Sec.02-23S-35W  
Kearny County, Kansas

Dear Katherine McClurkan:

"Your temporary abandonment (TA) application for the well listed above has been approved. In accordance with K.A.R. 82-3-111 the TA status of this well will expire 10/31/2018.

- \* If you return this well to service or plug it, please notify the District Office.
- \* If you sell this well you are required to file a Transfer of Operator form, T-1.
- \* If the well will remain temporarily abandoned, you must submit a new TA application, CP-111, before 10/31/2018.

You may contact me at the number above if you have questions.

Very truly yours,

Michael Maier"