

**TRILOBITE
TESTING, INC.**

DRILL STEM TEST REPORT

Red Oak Energy Inc
7701 E Kellog Dr Ste 710
Wichita, Ks 67207

ATTN: Larry Friend

32-13-38w Wallace, Ks
Pearce 1-32
Job Ticket: 63801 **DST#: 1**
Test Start: 2017.05.10 @ 18:29:24

GENERAL INFORMATION:

Formation: **Topeka**
Deviated: No Whipstock: ft (KB)
Time Tool Opened: 22:54:54
Time Test Ended: 03:26:54

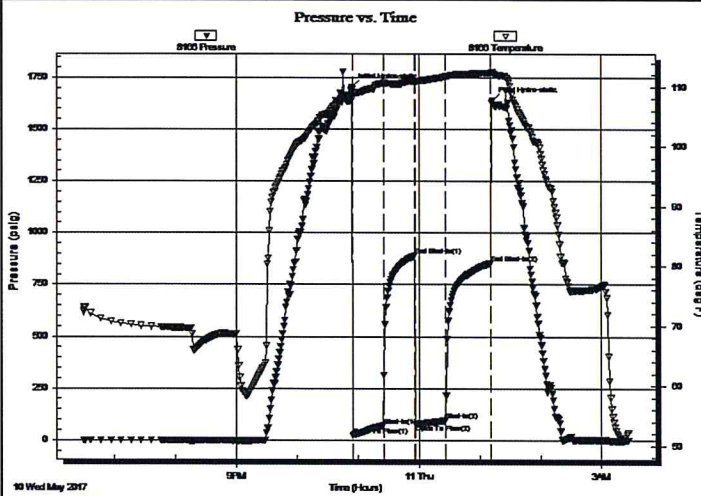
Interval: **3522.00 ft (KB) To 3586.00 ft (KB) (TVD)**
Total Depth: 3586.00 ft (KB) (TVD)
Hole Diameter: 7.88 inches Hole Condition: Good

Test Type: Conventional Bottom Hole (Initial)
Tester: Brandon Turley
Unit No: 79

Reference Elevations: 3254.00 ft (KB)
3247.00 ft (CF)
KB to GR/CF: 7.00 ft

Serial #: 8166 Outside
Press@RunDepth: 93.77 psig @ 3523.00 ft (KB) Capacity: 8000.00 psig
Start Date: 2017.05.10 End Date: 2017.05.11 Last Calib.: 2017.05.11
Start Time: 18:29:29 End Time: 03:26:54 Time On Btm: 2017.05.10 @ 22:53:54
Time Off Btm: 2017.05.11 @ 01:12:24

TEST COMMENT: IF: 1/4 blow built to 3.
IS: No return.
FF: Surface blow built to 1 1/4.
FS: No return.



PRESSURE SUMMARY

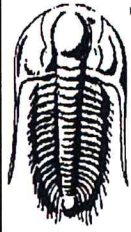
Time (Min.)	Pressure (psig)	Temp (deg F)	Annotation
0	1701.95	108.96	Initial Hydro-static
1	<u>22.92</u>	108.18	Open To Flow (1)
31	<u>70.04</u>	110.60	Shut-In(1)
62	889.07	110.99	End Shut-In(1)
63	76.88	110.78	Open To Flow (2)
92	93.77	111.74	Shut-In(2)
137	855.01	112.36	End Shut-In(2)
139	1637.80	112.46	Final Hydro-static

Recovery

Length (ft)	Description	Volume (bbl)
124.00	w cm 20%w 80%m	0.63
45.00	mud oil spots 100%m	0.63

Gas Rates

	Choke (inches)	Pressure (psig)	Gas Rate (Mcf/d)



**TRILOBITE
TESTING, INC.**

DRILL STEM TEST REPORT

FLUID SUMMARY

Red Oak Energy Inc

32-13-38w Wallace, Ks

7701 E Kellog Dr Ste 710
Wichita, Ks 67207

Pearce 1-32

Job Ticket: 63801

DST#: 1

ATTN: Larry Friend

Test Start: 2017.05.10 @ 18:29:24

Mud and Cushion Information

Mud Type: Gel Chem	Cushion Type:	Oil API: 0 deg API
Mud Weight: 9.00 lb/gal	Cushion Length: ft	Water Salinity: 19000 ppm
Viscosity: 52.00 sec/qt	Cushion Volume: bbl	
Water Loss: 6.40 in ³	Gas Cushion Type:	
Resistivity: 0.00 ohm.m	Gas Cushion Pressure: psig	
Salinity: 3000.00 ppm		
Filter Cake: 1.00 inches		

Recovery Information

Recovery Table

Length ft	Description	Volume bbl
124.00	w cm 20%w 80%m	0.628
45.00	mud oil spots 100%m	0.631

Total Length: 169.00 ft Total Volume: 1.259 bbl

Num Fluid Samples: 0

Num Gas Bombs: 0

Serial #:

Laboratory Name:

Laboratory Location:

Recovery Comments: .49@52=19000

Serial #: 8166

Outside Red Oak Energy Inc

Pearce 1-32

DST Test Number: 1

