



DRILL STEM TEST REPORT

Prepared For: **Marexco, Inc.**

PO Box 21598
Oklahoma City, OK 73158

ATTN: Rick Hall

Kyte #34-2

2-3s-29w Decatur,KS

Start Date: 2017.07.07 @ 10:10:00

End Date: 2017.07.07 @ 14:35:00

Job Ticket #: 63149 DST #: 1

Trilobite Testing, Inc
1515 Commerce Parkway Hays, KS 67601
ph: 785-625-4778 fax: 785-625-5620

Printed: 2017.07.11 @ 11:00:21

Marexco, Inc. 2-3s-29w Decatur,KS Kyte #34-2 DST # 1 LKC "B" 2017.07.07



TRILOBITE TESTING, INC.

DRILL STEM TEST REPORT

Marexco, Inc.
 PO Box 21598
 Oklahoma City, OK 73158
 ATTN: Rick Hall

2-3s-29w Decatur, KS
Kyte #34-2
 Job Ticket: 63149 **DST#: 1**
 Test Start: 2017.07.07 @ 10:10:00

GENERAL INFORMATION:

Formation: **LKC "B"**
 Deviated: No Whipstock: ft (KB)
 Time Tool Opened: 11:42:00
 Time Test Ended: 14:35:00
 Interval: **3625.00 ft (KB) To 3637.00 ft (KB) (TVD)**
 Total Depth: 3637.00 ft (KB) (TVD)
 Hole Diameter: 7.88 inches Hole Condition: Fair
 Test Type: Conventional Bottom Hole (Initial)
 Tester: James Winder
 Unit No: 83
 Reference Elevations: 2600.00 ft (KB)
 2595.00 ft (CF)
 KB to GR/CF: 5.00 ft

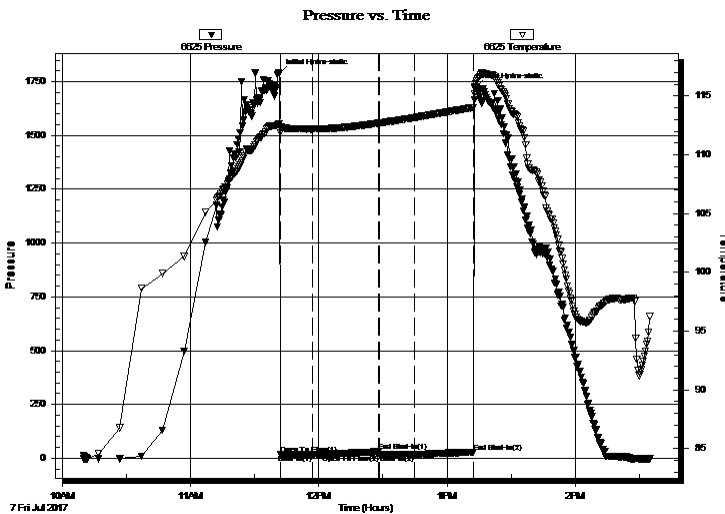
Serial #: 6625

Inside

Press@RunDepth: 18.43 psig @ 3626.00 ft (KB) Capacity: 8000.00 psig
 Start Date: 2017.07.07 End Date: 2017.07.07 Last Calib.: 2017.07.07
 Start Time: 10:10:05 End Time: 14:34:59 Time On Btm: 2017.07.07 @ 11:41:45
 Time Off Btm: 2017.07.07 @ 13:13:00

TEST COMMENT: 15 - IF: Weak surface blow from 10 - 12 min.
 30 - IS: No blow
 15 - FF: No blow
 30 - FS: No blow

PRESSURE SUMMARY



Time (Min.)	Pressure (psig)	Temp (deg F)	Annotation
0	1785.88	112.64	Initial Hydro-static
1	18.07	111.86	Open To Flow (1)
16	17.94	112.18	Shut-In(1)
47	30.29	112.69	End Shut-In(1)
47	17.90	112.70	Open To Flow (2)
63	18.43	113.16	Shut-In(2)
91	28.80	114.02	End Shut-In(2)
92	1724.07	115.72	Final Hydro-static

Recovery

Length (ft)	Description	Volume (bbl)
4.00	Mud 100%	0.06
0.00	Oil spots in tool	0.00

Gas Rates

Choke (inches)	Pressure (psig)	Gas Rate (Mcf/d)



TRILOBITE TESTING, INC.

DRILL STEM TEST REPORT

Marexco, Inc.
PO Box 21598
Oklahoma City, OK 73158
ATTN: Rick Hall

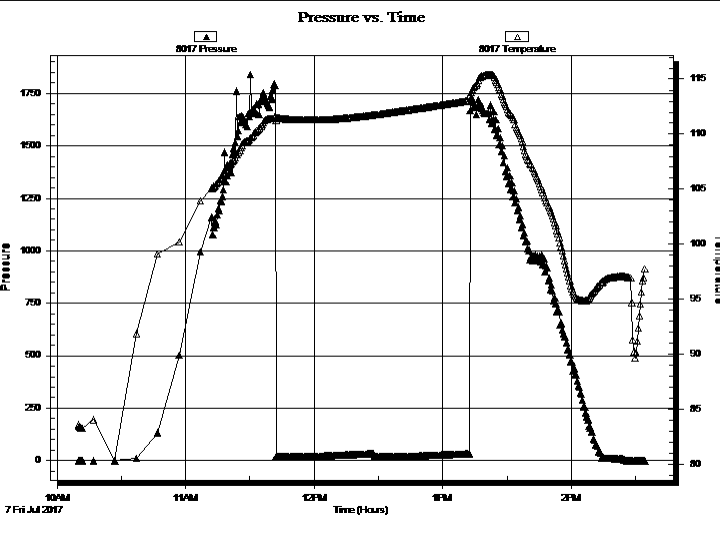
2-3s-29w Decatur,KS
Kyte #34-2
Job Ticket: 63149 **DST#: 1**
Test Start: 2017.07.07 @ 10:10:00

GENERAL INFORMATION:

Formation: **LKC "B"**
Deviated: No Whipstock: ft (KB) Test Type: Conventional Bottom Hole (Initial)
Time Tool Opened: 11:42:00 Tester: James Winder
Time Test Ended: 14:35:00 Unit No: 83
Interval: 3625.00 ft (KB) To 3637.00 ft (KB) (TVD) Reference Elevations: 2600.00 ft (KB)
Total Depth: 3637.00 ft (KB) (TVD) 2595.00 ft (CF)
Hole Diameter: 7.88 inches Hole Condition: Fair KB to GR/CF: 5.00 ft

Serial #: 8017 Outside
Press@RunDepth: psig @ 3626.00 ft (KB) Capacity: 8000.00 psig
Start Date: 2017.07.07 End Date: 2017.07.07 Last Calib.: 2017.07.07
Start Time: 10:10:05 End Time: 14:34:29 Time On Btm:
Time Off Btm:

TEST COMMENT: 15 - IF: Weak surface blow from 10 - 12 min.
30 - IS: No blow
15 - FF: No blow
30 - FS: No blow



PRESSURE SUMMARY			
Time (Min.)	Pressure (psig)	Temp (deg F)	Annotation

Recovery		
Length (ft)	Description	Volume (bbl)
4.00	Mud 100%	0.06
0.00	Oil spots in tool	0.00

Gas Rates			
	Choke (inches)	Pressure (psig)	Gas Rate (Mcf/d)



**TRILOBITE
TESTING, INC.**

DRILL STEM TEST REPORT

TOOL DIAGRAM

Marexco, Inc.
PO Box 21598
Oklahoma City, OK 73158
ATTN: Rick Hall

2-3s-29w Decatur, KS
Kyte #34-2
Job Ticket: 63149 **DST#: 1**
Test Start: 2017.07.07 @ 10:10:00

Tool Information

Drill Pipe:	Length: 3614.00 ft	Diameter: 3.80 inches	Volume: 50.69 bbl	Tool Weight: 2500.00 lb
Heavy Wt. Pipe:	Length: 0.00 ft	Diameter: 2.75 inches	Volume: 0.00 bbl	Weight set on Packer: 25000.00 lb
Drill Collar:	Length: 0.00 ft	Diameter: 2.25 inches	Volume: 0.00 bbl	Weight to Pull Loose: 65000.00 lb
		Total Volume: 50.69 bbl		Tool Chased 0.00 ft
Drill Pipe Above KB:	18.00 ft			String Weight: Initial 56000.00 lb
Depth to Top Packer:	3625.00 ft			Final 56000.00 lb
Depth to Bottom Packer:	ft			
Interval between Packers:	12.00 ft			
Tool Length:	41.00 ft			
Number of Packers:	2	Diameter: 6.75 inches		

Tool Comments:

Tool Description	Length (ft)	Serial No.	Position	Depth (ft)	Accum. Lengths
------------------	-------------	------------	----------	------------	----------------

Change Over Sub	1.00			3597.00	
Shut In Tool	5.00			3602.00	
Hydraulic tool	5.00			3607.00	
Jars	5.00			3612.00	
Safety Joint	3.00			3615.00	
Packer	5.00			3620.00	29.00 Bottom Of Top Packer
Packer	5.00			3625.00	
Stubb	1.00			3626.00	
Recorder	0.00	6625	Inside	3626.00	
Recorder	0.00	8017	Outside	3626.00	
Perforations	8.00			3634.00	
Bullnose	3.00			3637.00	12.00 Bottom Packers & Anchor

Total Tool Length: 41.00



**TRILOBITE
TESTING, INC.**

DRILL STEM TEST REPORT

FLUID SUMMARY

Marexco, Inc.

2-3s-29w Decatur, KS

PO Box 21598
Oklahoma City, OK 73158

Kyte #34-2

Job Ticket: 63149

DST#: 1

ATTN: Rick Hall

Test Start: 2017.07.07 @ 10:10:00

Mud and Cushion Information

Mud Type: Gel Chem

Cushion Type:

Oil API:

deg API

Mud Weight: 8.00 lb/gal

Cushion Length:

ft

Water Salinity:

ppm

Viscosity: 63.00 sec/qt

Cushion Volume:

bbbl

Water Loss: 10.56 in³

Gas Cushion Type:

Resistivity: ohm.m

Gas Cushion Pressure:

psig

Salinity: 2000.00 ppm

Filter Cake: 1.00 inches

Recovery Information

Recovery Table

Length ft	Description	Volume bbl
4.00	Mud 100%	0.056
0.00	Oil spots in tool	0.000

Total Length: 4.00 ft Total Volume: 0.056 bbl

Num Fluid Samples: 0

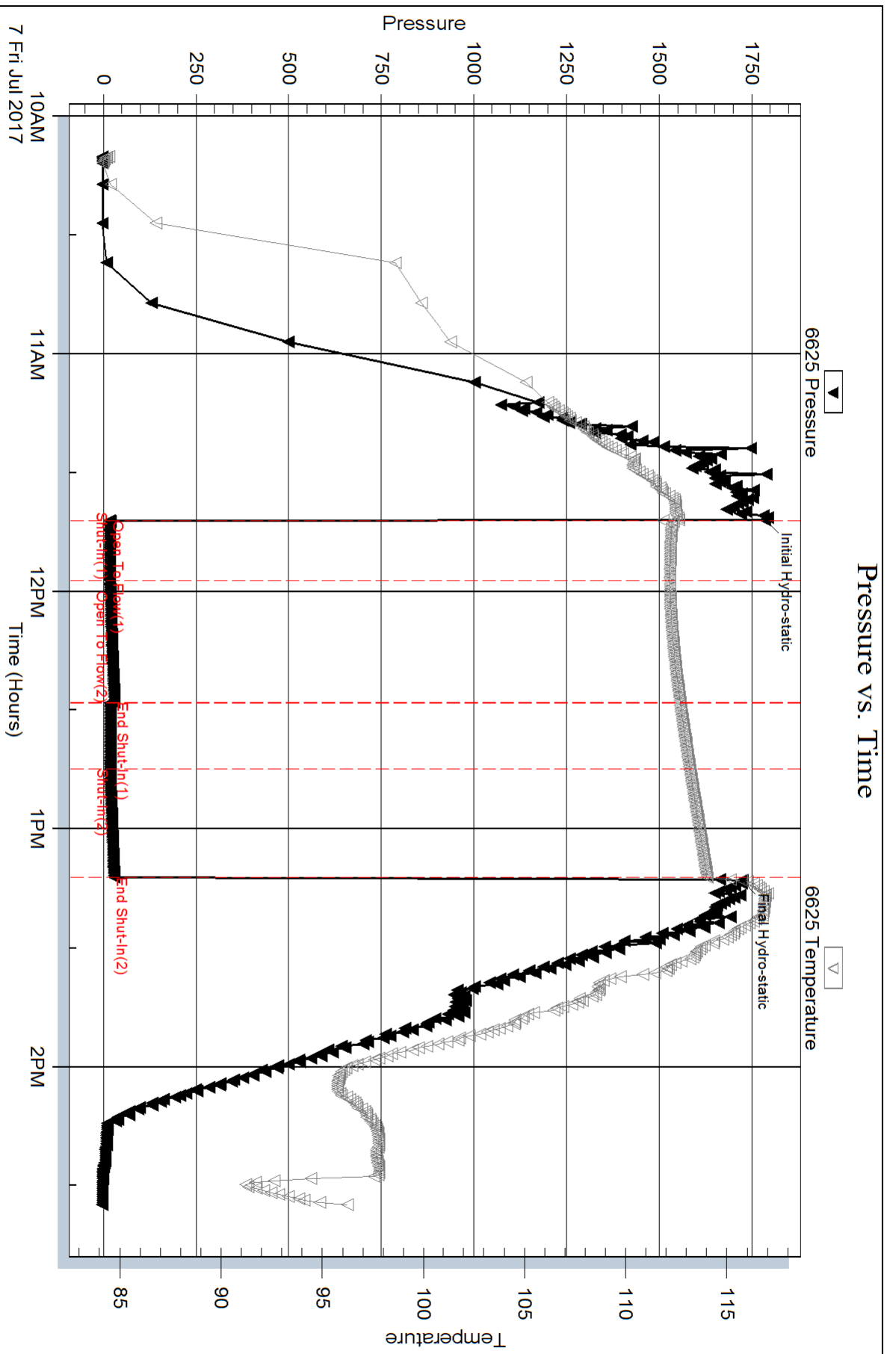
Num Gas Bombs: 0

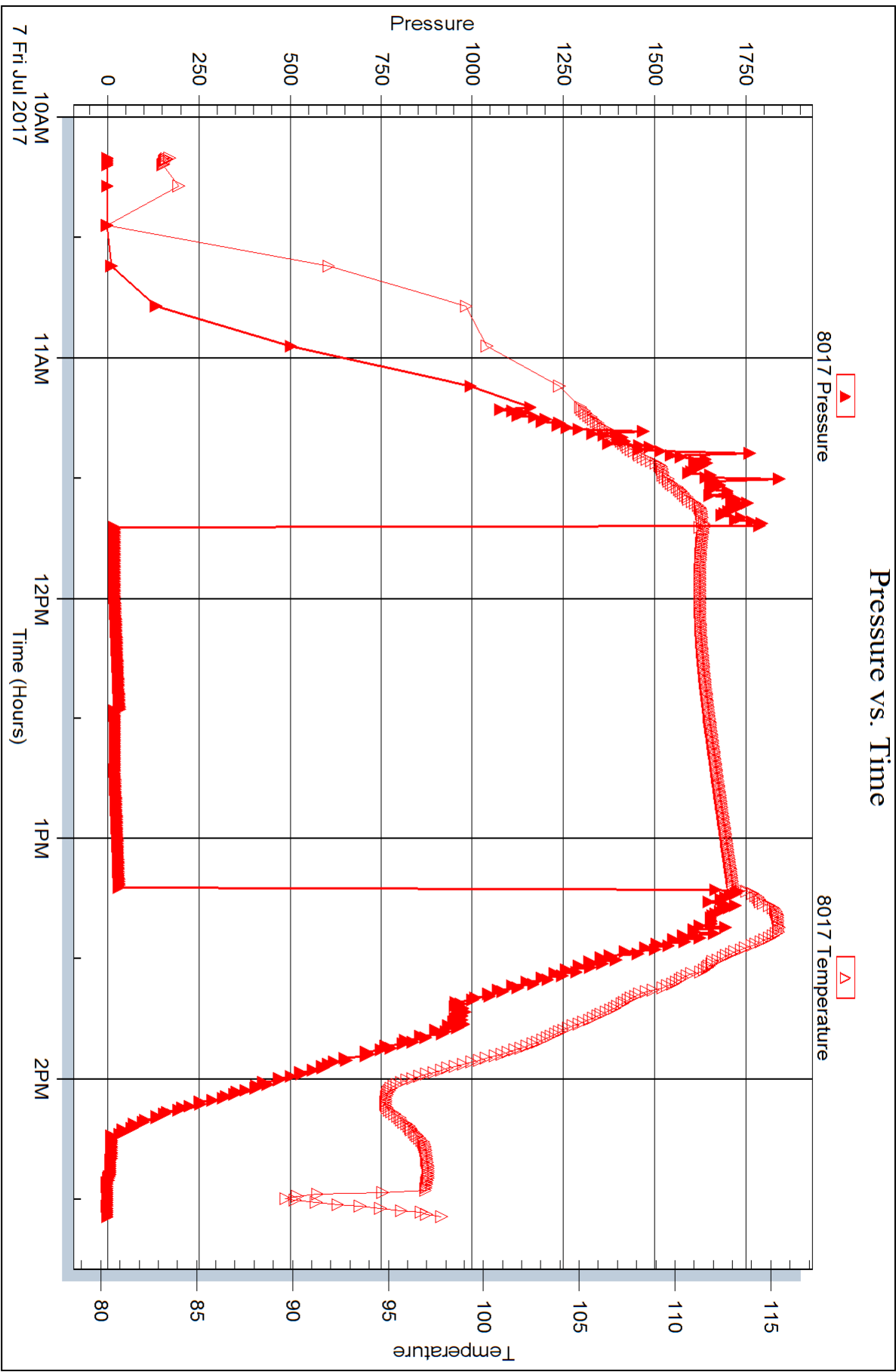
Serial #:

Laboratory Name:

Laboratory Location:

Recovery Comments:







DRILL STEM TEST REPORT

Prepared For: **Marexco, Inc.**

PO Box 21598
Oklahoma City, OK 73158

ATTN: Rick Hall

Kyte #34-2

2-3s-29w Decatur,KS

Start Date: 2017.07.07 @ 21:12:00

End Date: 2017.07.08 @ 03:12:30

Job Ticket #: 63150 DST #: 2

Trilobite Testing, Inc
1515 Commerce Parkway Hays, KS 67601
ph: 785-625-4778 fax: 785-625-5620

Printed: 2017.07.11 @ 10:59:43



TRILOBITE TESTING, INC.

DRILL STEM TEST REPORT

Marexco, Inc.
 PO Box 21598
 Oklahoma City, OK 73158
 ATTN: Rick Hall

2-3s-29w Decatur, KS
Kyte #34-2
 Job Ticket: 63150 **DST#: 2**
 Test Start: 2017.07.07 @ 21:12:00

GENERAL INFORMATION:

Formation: **LKC "C"**
 Deviated: No Whipstock: ft (KB)
 Time Tool Opened: 23:22:30
 Time Test Ended: 03:12:30
 Interval: **3625.00 ft (KB) To 3651.00 ft (KB) (TVD)**
 Total Depth: 3651.00 ft (KB) (TVD)
 Hole Diameter: 7.88 inches Hole Condition: Fair
 Test Type: Conventional Bottom Hole (Reset)
 Tester: James Winder
 Unit No: 83
 Reference Elevations: 2600.00 ft (KB)
 2595.00 ft (CF)
 KB to GR/CF: 5.00 ft

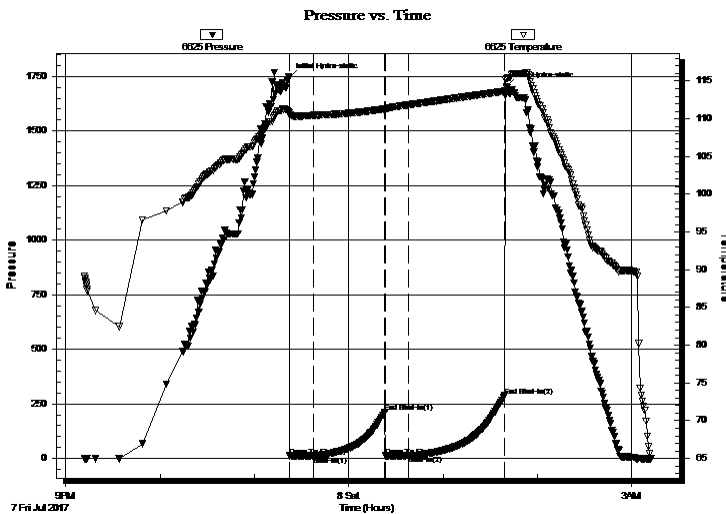
Serial #: 6625

Inside

Press@RunDepth: 12.38 psig @ 3626.00 ft (KB) Capacity: 8000.00 psig
 Start Date: 2017.07.07 End Date: 2017.07.08 Last Calib.: 2017.07.08
 Start Time: 21:12:05 End Time: 03:12:29 Time On Btm: 2017.07.07 @ 23:22:15
 Time Off Btm: 2017.07.08 @ 01:40:15

TEST COMMENT: 15 - IF: Blow built to 1/2"
 45 - IS: No blow back
 15 - FF: Weak surface blow for 1 min., then dead
 60 - FS: No blow

PRESSURE SUMMARY



Time (Min.)	Pressure (psig)	Temp (deg F)	Annotation
0	1745.86	110.85	Initial Hydro-static
1	10.97	110.50	Open To Flow (1)
16	11.51	110.46	Shut-In(1)
61	211.31	111.31	End Shut-In(1)
61	11.14	111.32	Open To Flow (2)
76	12.38	111.85	Shut-In(2)
137	287.02	113.65	End Shut-In(2)
138	1701.43	115.32	Final Hydro-static

Recovery

Length (ft)	Description	Volume (bbl)
1.00	Mud 100%	0.01

Gas Rates

Choke (inches)	Pressure (psig)	Gas Rate (Mcf/d)

* Recovery from multiple tests



**TRILOBITE
TESTING, INC.**

DRILL STEM TEST REPORT

TOOL DIAGRAM

Marexco, Inc.
PO Box 21598
Oklahoma City, OK 73158
ATTN: Rick Hall

2-3s-29w Decatur, KS
Kyte #34-2
Job Ticket: 63150 **DST#: 2**
Test Start: 2017.07.07 @ 21:12:00

Tool Information

Drill Pipe:	Length: 3615.00 ft	Diameter: 3.80 inches	Volume: 50.71 bbl	Tool Weight: 2500.00 lb
Heavy Wt. Pipe:	Length: 0.00 ft	Diameter: 2.75 inches	Volume: 0.00 bbl	Weight set on Packer: 25000.00 lb
Drill Collar:	Length: 0.00 ft	Diameter: 2.25 inches	Volume: 0.00 bbl	Weight to Pull Loose: 60000.00 lb
			<u>Total Volume: 50.71 bbl</u>	Tool Chased 0.00 ft
Drill Pipe Above KB:	14.00 ft			String Weight: Initial 56000.00 lb
Depth to Top Packer:	3625.00 ft			Final 56000.00 lb
Depth to Bottom Packer:	ft			
Interval between Packers:	26.00 ft			
Tool Length:	50.00 ft			
Number of Packers:	2	Diameter: 6.75 inches		

Tool Comments:

Tool Description	Length (ft)	Serial No.	Position	Depth (ft)	Accum. Lengths
-------------------------	--------------------	-------------------	-----------------	-------------------	-----------------------

Change Over Sub	1.00			3602.00	
Shut In Tool	5.00			3607.00	
Hydraulic tool	5.00			3612.00	
Safety Joint	3.00			3615.00	
Packer	5.00			3620.00	24.00 Bottom Of Top Packer
Packer	5.00			3625.00	
Stubb	1.00			3626.00	
Recorder	0.00	6625	Inside	3626.00	
Recorder	0.00	8017	Outside	3626.00	
Perforations	22.00			3648.00	
Bullnose	3.00			3651.00	26.00 Bottom Packers & Anchor

Total Tool Length: 50.00



**TRILOBITE
TESTING, INC.**

DRILL STEM TEST REPORT

FLUID SUMMARY

Marexco, Inc.

2-3s-29w Decatur, KS

PO Box 21598
Oklahoma City, OK 73158

Kyte #34-2

Job Ticket: 63150

DST#: 2

ATTN: Rick Hall

Test Start: 2017.07.07 @ 21:12:00

Mud and Cushion Information

Mud Type: Gel Chem

Cushion Type:

Oil API:

deg API

Mud Weight: 8.00 lb/gal

Cushion Length:

ft

Water Salinity:

ppm

Viscosity: 63.00 sec/qt

Cushion Volume:

bbbl

Water Loss: 10.55 in³

Gas Cushion Type:

Resistivity: ohm.m

Gas Cushion Pressure:

psig

Salinity: 2000.00 ppm

Filter Cake: 1.00 inches

Recovery Information

Recovery Table

Length ft	Description	Volume bbl
1.00	Mud 100%	0.014

Total Length: 1.00 ft Total Volume: 0.014 bbl

Num Fluid Samples: 0

Num Gas Bombs: 0

Serial #:

Laboratory Name:

Laboratory Location:

Recovery Comments:

Serial #: 6625

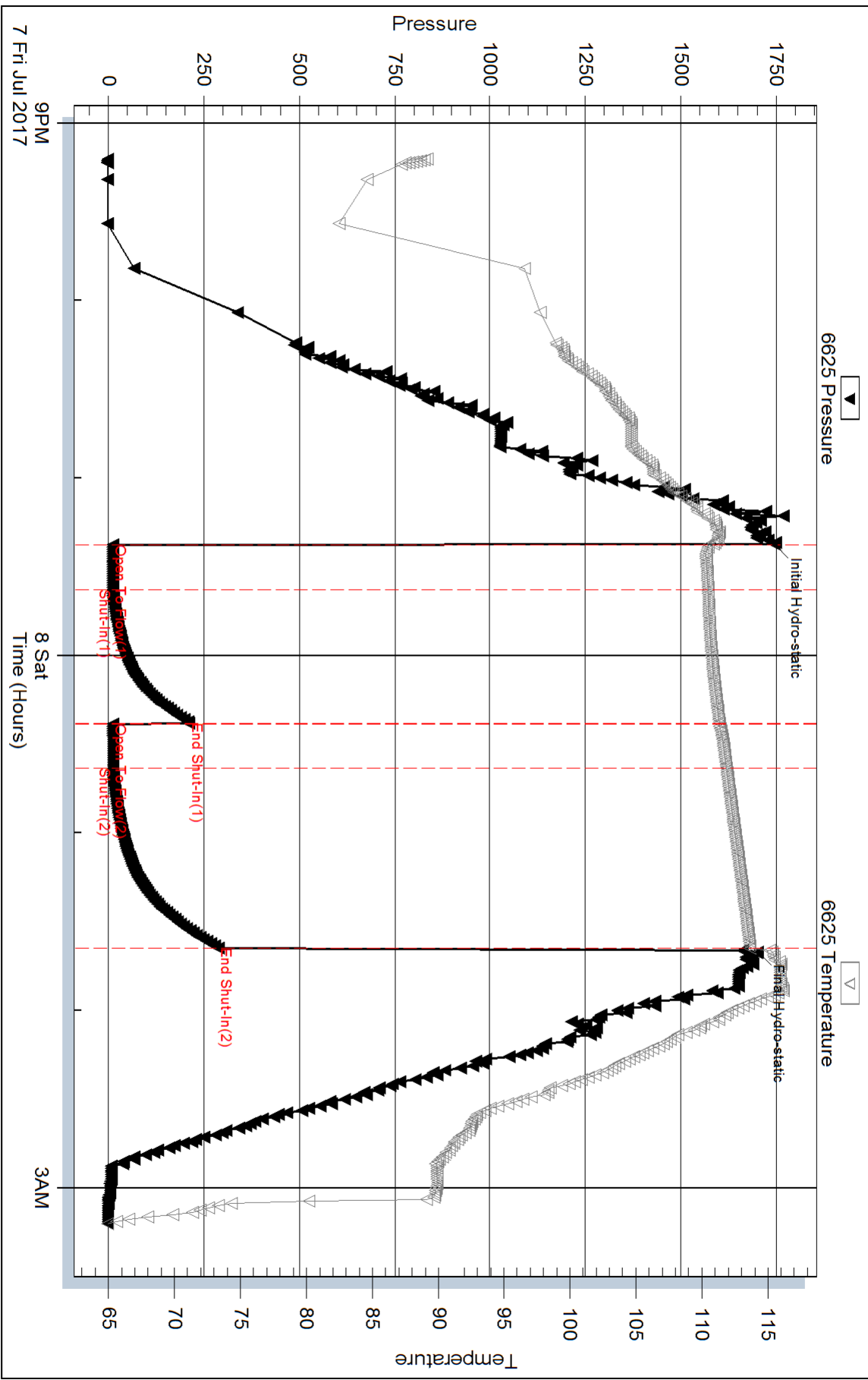
Inside

Marexco, Inc.

Kyte #34-2

DST Test Number: 2

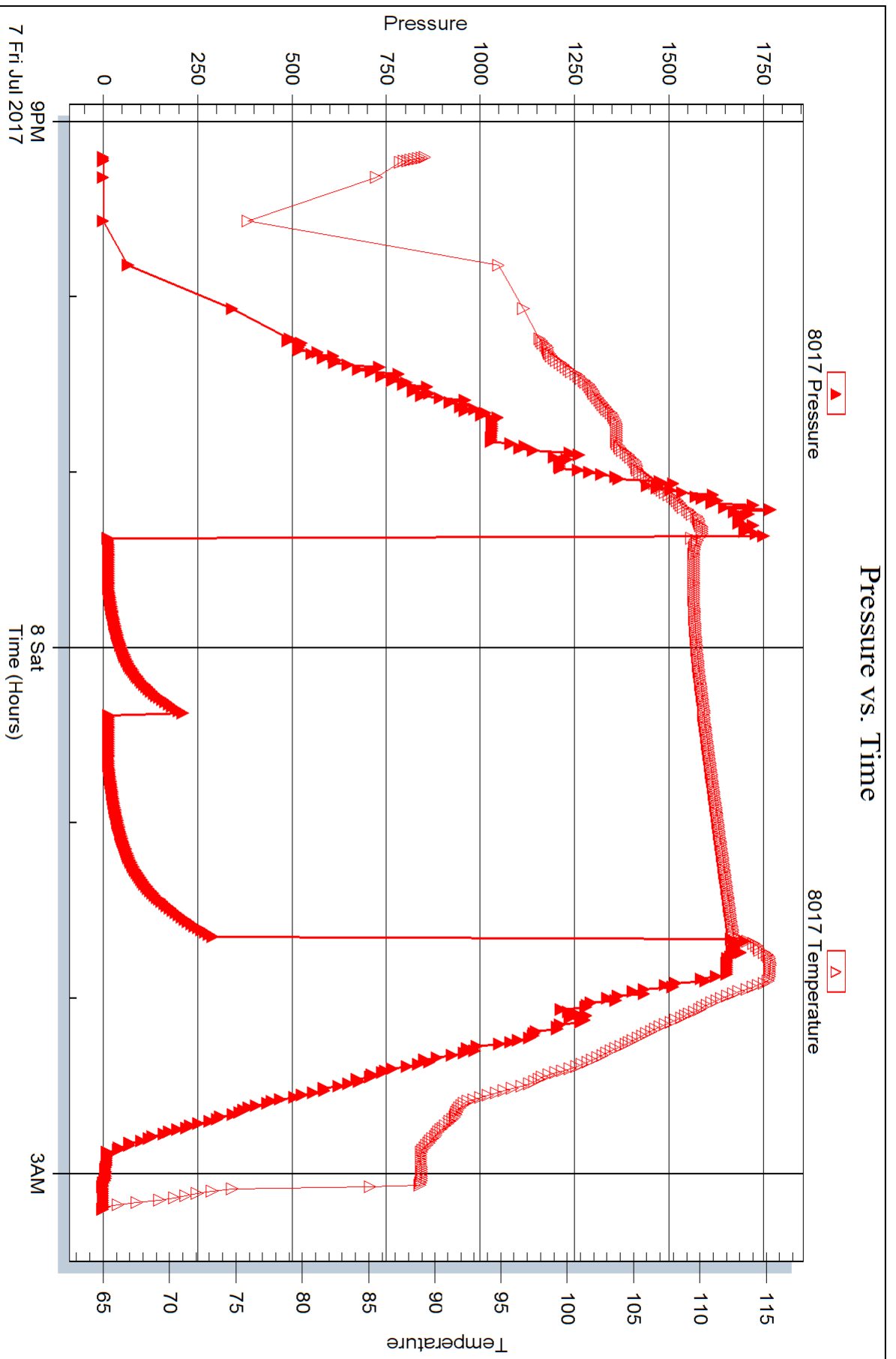
Pressure vs. Time



Trilobite Testing, Inc

Ref. No: 63150

Printed: 2017.07.11 @ 10:59:44





DRILL STEM TEST REPORT

Prepared For: **Marexco, Inc.**

PO Box 21598
Oklahoma City, OK 73158

ATTN: Rick Hall

Kyte #34-2

2-3s-29w Decatur,KS

Start Date: 2017.07.08 @ 12:03:00

End Date: 2017.07.08 @ 16:48:45

Job Ticket #: 63326 DST #: 3

Trilobite Testing, Inc
1515 Commerce Parkway Hays, KS 67601
ph: 785-625-4778 fax: 785-625-5620

Printed: 2017.07.11 @ 10:58:45



TRILOBITE TESTING, INC.

DRILL STEM TEST REPORT

Marexco, Inc.
 PO Box 21598
 Oklahoma City, OK 73158
 ATTN: Rick Hall

2-3s-29w Decatur, KS
Kyte #34-2
 Job Ticket: 63326 **DST#: 3**
 Test Start: 2017.07.08 @ 12:03:00

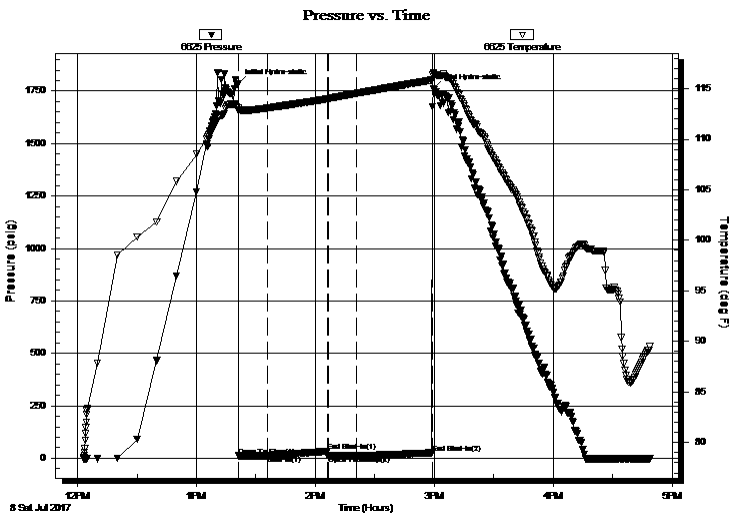
GENERAL INFORMATION:

Formation: **LKC "D - E"**
 Deviated: No Whipstock: ft (KB)
 Time Tool Opened: 13:21:15
 Time Test Ended: 16:48:45
 Interval: **3652.00 ft (KB) To 3716.00 ft (KB) (TVD)**
 Total Depth: 3716.00 ft (KB) (TVD)
 Hole Diameter: 7.88 inches Hole Condition: Fair
 Test Type: Conventional Bottom Hole (Reset)
 Tester: James Winder
 Unit No: 83
 Reference Elevations: 2600.00 ft (KB)
 2595.00 ft (CF)
 KB to GR/CF: 5.00 ft

Serial #: 6625 Inside
 Press@RunDepth: 12.28 psig @ 3653.00 ft (KB) Capacity: 8000.00 psig
 Start Date: 2017.07.08 End Date: 2017.07.08 Last Calib.: 2017.07.08
 Start Time: 12:03:05 End Time: 16:48:44 Time On Btm: 2017.07.08 @ 13:21:00
 Time Off Btm: 2017.07.08 @ 14:59:30

TEST COMMENT: 15 - IF: Weak surface blow , dead at 6 min.
 30 - IS: No blow
 15 - FF: No blow
 30 - FS: No blow

PRESSURE SUMMARY



Time (Min.)	Pressure (psig)	Temp (deg F)	Annotation
0	1784.37	113.06	Initial Hydro-static
1	11.31	112.85	Open To Flow (1)
15	12.18	113.09	Shut-In(1)
45	33.62	113.99	End Shut-In(1)
46	12.13	114.01	Open To Flow (2)
60	12.28	114.55	Shut-In(2)
98	25.80	115.86	End Shut-In(2)
99	1759.91	116.61	Final Hydro-static

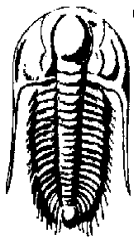
Recovery

Length (ft)	Description	Volume (bbl)
1.00	Mud 100%	0.01
0.00	Oil spots in tool	0.00

* Recovery from multiple tests

Gas Rates

Choke (inches)	Pressure (psig)	Gas Rate (Mcf/d)



TRILOBITE TESTING, INC.

DRILL STEM TEST REPORT

Marexco, Inc.
 PO Box 21598
 Oklahoma City, OK 73158
 ATTN: Rick Hall

2-3s-29w Decatur, KS
Kyte #34-2
 Job Ticket: 63326 **DST#: 3**
 Test Start: 2017.07.08 @ 12:03:00

GENERAL INFORMATION:

Formation: **LKC "D - E"**
 Deviated: No Whipstock: ft (KB) Test Type: Conventional Bottom Hole (Reset)
 Time Tool Opened: 13:21:15 Tester: James Winder
 Time Test Ended: 16:48:45 Unit No: 83
Interval: 3652.00 ft (KB) To 3716.00 ft (KB) (TVD) Reference Elevations: 2600.00 ft (KB)
 Total Depth: 3716.00 ft (KB) (TVD) 2595.00 ft (CF)
 Hole Diameter: 7.88 inches Hole Condition: Fair KB to GR/CF: 5.00 ft

Serial #: 8017 **Outside**
 Press@RunDepth: psig @ 3653.00 ft (KB) Capacity: 8000.00 psig
 Start Date: 2017.07.08 End Date: 2017.07.08 Last Calib.: 2017.07.08
 Start Time: 12:03:05 End Time: 16:48:14 Time On Btm:
 Time Off Btm:

TEST COMMENT: 15 - IF: Weak surface blow , dead at 6 min.
 30 - IS: No blow
 15 - FF: No blow
 30 - FS: No blow

PRESSURE SUMMARY

Time (Min.)	Pressure (psig)	Temp (deg F)	Annotation

Recovery

Length (ft)	Description	Volume (bbl)
1.00	Mud 100%	0.01
0.00	Oil spots in tool	0.00

Gas Rates

Choke (inches)	Pressure (psig)	Gas Rate (Mcf/d)

* Recovery from multiple tests



**TRILOBITE
TESTING, INC.**

DRILL STEM TEST REPORT

TOOL DIAGRAM

Marexco, Inc.
PO Box 21598
Oklahoma City, OK 73158
ATTN: Rick Hall

2-3s-29w Decatur, KS
Kyte #34-2
Job Ticket: 63326 **DST#: 3**
Test Start: 2017.07.08 @ 12:03:00

Tool Information

Drill Pipe:	Length: 3645.00 ft	Diameter: 3.80 inches	Volume: 51.13 bbl	Tool Weight: 2500.00 lb
Heavy Wt. Pipe:	Length: 0.00 ft	Diameter: 2.75 inches	Volume: 0.00 bbl	Weight set on Packer: 25000.00 lb
Drill Collar:	Length: 0.00 ft	Diameter: 2.25 inches	Volume: 0.00 bbl	Weight to Pull Loose: 60000.00 lb
		Total Volume: 51.13 bbl		Tool Chased 0.00 ft
Drill Pipe Above KB:	17.00 ft			String Weight: Initial 56000.00 lb
Depth to Top Packer:	3652.00 ft			Final 56000.00 lb
Depth to Bottom Packer:	ft			
Interval between Packers:	64.00 ft			
Tool Length:	88.00 ft			
Number of Packers:	2	Diameter: 6.75 inches		

Tool Comments:

Tool Description	Length (ft)	Serial No.	Position	Depth (ft)	Accum. Lengths
-------------------------	--------------------	-------------------	-----------------	-------------------	-----------------------

Change Over Sub	1.00			3629.00	
Shut In Tool	5.00			3634.00	
Hydraulic tool	5.00			3639.00	
Safety Joint	3.00			3642.00	
Packer	5.00			3647.00	24.00 Bottom Of Top Packer
Packer	5.00			3652.00	
Stubb	1.00			3653.00	
Recorder	0.00	6625	Inside	3653.00	
Recorder	0.00	8017	Outside	3653.00	
Perforations	22.00			3675.00	
Blank Spacing	34.00			3709.00	
Perforations	4.00			3713.00	
Bullnose	3.00			3716.00	64.00 Bottom Packers & Anchor

Total Tool Length: 88.00



**TRILOBITE
TESTING, INC.**

DRILL STEM TEST REPORT

FLUID SUMMARY

Marexco, Inc.
PO Box 21598
Oklahoma City, OK 73158
ATTN: Rick Hall

2-3s-29w Decatur, KS
Kyte #34-2
Job Ticket: 63326 **DST#: 3**
Test Start: 2017.07.08 @ 12:03:00

Mud and Cushion Information

Mud Type: Gel Chem	Cushion Type:	Oil API:	deg API
Mud Weight: 9.00 lb/gal	Cushion Length: ft	Water Salinity:	ppm
Viscosity: 51.00 sec/qt	Cushion Volume: bbl		
Water Loss: 8.99 in ³	Gas Cushion Type:		
Resistivity: ohm.m	Gas Cushion Pressure: psig		
Salinity: 2000.00 ppm			
Filter Cake: 1.00 inches			

Recovery Information

Recovery Table

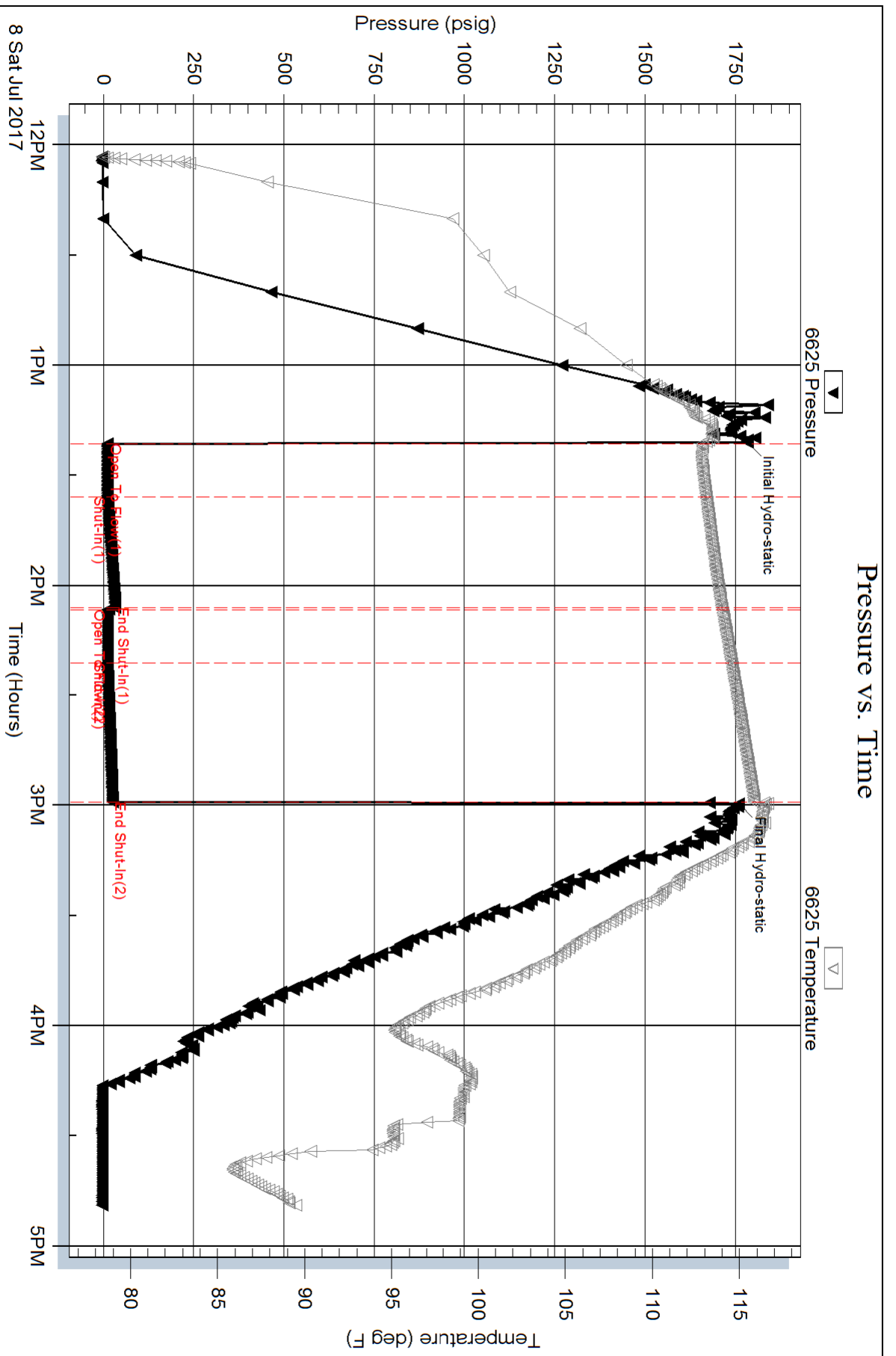
Length ft	Description	Volume bbl
1.00	Mud 100%	0.014
0.00	Oil spots in tool	0.000

Total Length: 1.00 ft Total Volume: 0.014 bbl

Num Fluid Samples: 0 Num Gas Bombs: 0 Serial #:

Laboratory Name: Laboratory Location:

Recovery Comments:

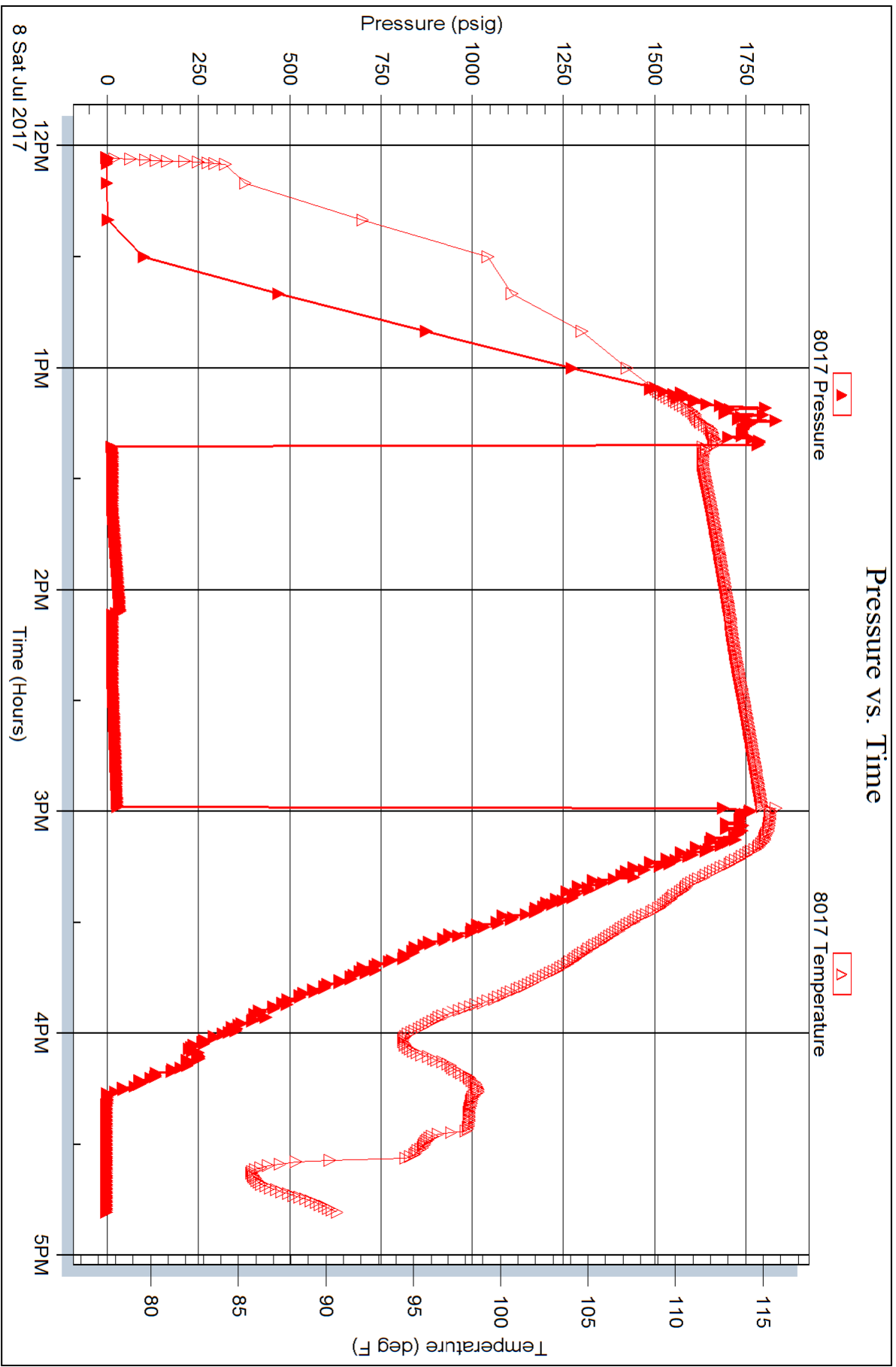


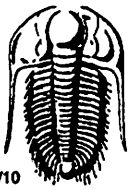
Serial #: 8017

Outside Marexco, Inc.

Kyte #34-2

DST Test Number: 3





TRILOBITE TESTING INC.

1515 Commerce Parkway • Hays, Kansas 67601

Test Ticket

NO. 63149

Well Name & No. Kyte # 34-2 Test No. 1 Date 7-7-17
 Company Marexco Inc Elevation 2600 KB 2595 GL
 Address PO Box 21598 Oklahoma City, OK 73158
 Co. Rep / Geo. Rick Hall Rig White Knight
 Location: Sec. 2 Twp. 3S Rge. 29W Co. Decatur State KS

Interval Tested 3625 - 3637 Zone Tested Lans. "B"
 Anchor Length 12 Drill Pipe Run 3614 Mud Wt. 8.3
 Top Packer Depth 3620 Drill Collars Run - Vis 63
 Bottom Packer Depth 3625 Wt. Pipe Run - WL 10.6
 Total Depth 3637 Chlorides 2000 ppm System LCM 1 1/2

Blow Description IF: Weak surface blow from 10-12 min
ISI: No blow
FF: No blow
FSI: No blow

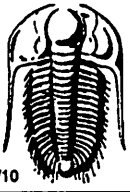
Rec	Feet of	%gas	%oil	%water	%mud
<u>4</u>	<u>mud</u>			<u>100</u>	
	<u>oil spots in tool</u>				

Rec Total 4 BHT 114 Gravity _____ API RW _____ @ _____ °F Chlorides _____ ppm

(A) Initial Hydrostatic 1786 Test 1050 T-On Location 8:50
 (B) First Initial Flow 18 Jars 250 T-Started 10:10
 (C) First Final Flow 18 Safety Joint 75 T-Open 11:42
 (D) Initial Shut-In 30 Circ Sub _____ T-Pulled 13:12
 (E) Second Initial Flow 18 Hourly Standby _____ T-Out 14:30
 (F) Second Final Flow 18 Mileage 4RT 3 Comments _____
 (G) Final Shut-In 29 Sampler _____
 (H) Final Hydrostatic 1724 Straddle _____ Ruined Shale Packer _____
 Shale Packer _____ Ruined Packer _____
 Extra Packer _____ Extra Copies _____
 Extra Recorder _____ Sub Total 0
 Day Standby _____ Total 1378
 Accessibility _____ MP/DST Disc't _____
 Sub Total 1378

Approved By _____ Our Representative James Winkler

TriLOBITE Testing Inc. shall not be liable for damaged of any kind of the property or personnel of the one for whom a test is made, or for any loss suffered or sustained, directly or indirectly, through the use of its equipment, or its statements or opinion concerning the results of any test, tools lost or damaged in the hole shall be paid for at cost by the party for whom the test is made.



TRILOBITE TESTING INC.

1515 Commerce Parkway • Hays, Kansas 67601

Test Ticket

NO. 63150

Well Name & No. Kyte #34-2 Test No. 2 Date 7-7-17
 Company Marexco Inc Elevation 2600 KB 2595 GL
 Address PO Box 21598 Oklahoma City OK 73158
 Co. Rep / Geo. Rick Hall Rig White Knight
 Location: Sec. 2 Twp. 3s Rge. 29w Co. Decatur State KS

Interval Tested 3625 - 3651 Zone Tested Lans. "C"
 Anchor Length 26 Drill Pipe Run 3615 Mud Wt. 8.3
 Top Packer Depth 3620 Drill Collars Run - Vis 63
 Bottom Packer Depth 3625 Wt. Pipe Run - WL 10.6
 Total Depth 3651 Chlorides 2000 ppm System LCM 1 1/2

Blow Description IF: Blow built to 1/2"
ISI: No blowback
FF: Weak surface blow for 1 min. then dead
FSI: No blow

Rec	Feet of	%gas	%oil	%water	%mud
<u>1</u>	<u>Mud</u>			<u>100</u>	
Rec	Feet of	%gas	%oil	%water	%mud
Rec	Feet of	%gas	%oil	%water	%mud
Rec	Feet of	%gas	%oil	%water	%mud
Rec	Feet of	%gas	%oil	%water	%mud

Rec Total 1 BHT 114 Gravity _____ API RW _____ @ _____ °F Chlorides _____ ppm

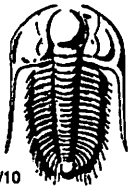
(A) Initial Hydrostatic 1746 Test 1050 T-On Location 20:00 7/7
 (B) First Initial Flow 11 Jars _____ T-Started 21:12
 (C) First Final Flow 12 Safety Joint 75 T-Open 23:22
 (D) Initial Shut-In 211 Circ Sub _____ T-Pulled 1:39
 (E) Second Initial Flow 11 Hourly Standby _____ T-Out 3:05 7/8
 (F) Second Final Flow 12 Mileage 4RT 3 Comments _____
 (G) Final Shut-In 287 Sampler _____
 (H) Final Hydrostatic 1701 Straddle _____
 Shale Packer _____
 Extra Packer _____
 Extra Recorder _____
 Day Standby _____
 Accessibility _____
 Sub Total 1128

Initial Open 15
 Initial Shut-In 45
 Final Flow 15
 Final Shut-In 60

Sub Total 1128
 Total 1128
 MP/DST Disc't _____

Approved By _____ Our Representative James Winder

Trilobite Testing Inc. shall not be liable for damaged of any kind of the property or personnel of the one for whom a test is made, or for any loss suffered or sustained, directly or indirectly, through the use of its equipment, or its statements or opinion concerning the results of any test, tools lost or damaged in the hole shall be paid for at cost by the party for whom the test is made.



TRILOBITE TESTING INC.

1515 Commerce Parkway • Hays, Kansas 67601

Test Ticket

NO. 63326

Well Name & No. Kyte #34-2 Test No. 3 Date 7-8-17
 Company Marexco Inc Elevation 2600 KB 2595 GL
 Address PO Box 21598 Oklahoma City, OK 73158
 Co. Rep / Geo. Rick Hall Rig White Knight
 Location: Sec. 2 Twp. 3s Rge. 29w Co. Decatur State KS

Interval Tested 3652-3716 Zone Tested Lans "D-E"
 Anchor Length 64 Drill Pipe Run 3645 Mud Wt. 8.6
 Top Packer Depth 3647 Drill Collars Run - Vis 51
 Bottom Packer Depth 3652 Wt. Pipe Run - WL 9.0
 Total Depth 3716 Chlorides 2000 ppm System LCM 1 1/2

Blow Description IF: weak surface blow, dead at 6 min
ISI: No blow
FF: No blow
FSI: No blow

Rec	Feet of	%gas	%oil	%water	%mud
<u>1</u>	<u>Mud</u>			<u>100</u>	
	<u>Oil spots in tool</u>				

Rec Total 1 BHT 116 Gravity 1050 API RW @ °F Chlorides ppm
 (A) Initial Hydrostatic 1784 Test 1050 T-On Location 11:45
 (B) First Initial Flow 11 Jars T-Started 12:03
 (C) First Final Flow 12 Safety Joint 75 T-Open 13:21
 (D) Initial Shut-In 34 Circ Sub T-Pulled 14:59
 (E) Second Initial Flow 12 Hourly Standby T-Out 16:45
 (F) Second Final Flow 12 Mileage 4RT 3 Comments
 (G) Final Shut-In 26 Sampler
 (H) Final Hydrostatic 1760 Straddle Ruined Shale Packer
 Initial Open 15 Shale Packer Ruined Packer
 Initial Shut-In 30 Extra Packer Extra Copies
 Final Flow 15 Extra Recorder Sub Total 0
 Final Shut-In 30 Day Standby Total 1128
 Accessibility MP/DST Disc't
 Sub Total 1128

Approved By Rick Hall Our Representative James Winter

Trilobite Testing Inc. shall not be liable for damaged of any kind of the property or personnel of the one for whom a test is made, or for any loss suffered or sustained, directly or indirectly, through the use of its equipment, or its statements or opinion concerning the results of any test, tools lost or damaged in the hole shall be paid for at cost by the party for whom the test is made.