



Field Service

P.O. BOX 438
Haysville, KS 67060

CEMENT BOND LOG

Company MIKE KELSO OIL, INC
Well HONAS "A" #2
Field WILDCAT
County TREGO
State KANSAS

Company MIKE KELSO OIL, INC
Well HONAS "A" #2
Field WILDCAT
County TREGO State KANSAS

Location 1330' FNL & 700" FEL
SEC. 21 TWP. 14SW RGE. 22W
Permanent Datum GROUND LEVEL Elevation 2221
Log Measured From KELLY BUSHING 7' AGL
Drilling Measured From KELLY BUSHING
Elevation K.B. 2228
D.F.
G.L. 2221

Date	09-27-2017		09-27-2017				
Run Number	ONE	ONE					
Depth Driller	4225						
Depth Logger	4136	1800					
Bottom Logged Interval		1799					
Top Log Interval	3032	1650					
Open Hole Size							
Type Fluid	WATER						
Density / Viscosity							
Max. Recorded Temp.							
Estimated Cement Top	3232						
Time Well Ready							
Time Logger on Bottom							
Equipment Number	405						
Location	GREAT BEND						
Recorded By	LEE BRETZ						
Witnessed By	MR. MIKE KELSO						
Borehole Record		Tubing Record					
Run Number	Bit	From	To	Size	Weight	From	To
Casing Record	Size			Wgt/Ft	Top		Bottom
Surface String	8.625				0		250
Prot. String							
Production String	5.5				0		4210
Liner							

<<< Fold Here >>>

All interpretations are opinions based on inferences from electrical or other measurements and we cannot and do not guarantee the accuracy or correctness of any interpretation, and we shall not, except in the case of gross or willful negligence on our part, be liable or responsible for any loss, costs, damages, or expenses incurred or sustained by anyone resulting from any interpretation made by any of our officers, agents or employees. These interpretations are also subject to our general terms and conditions set out in our current Price Schedule.

Comments

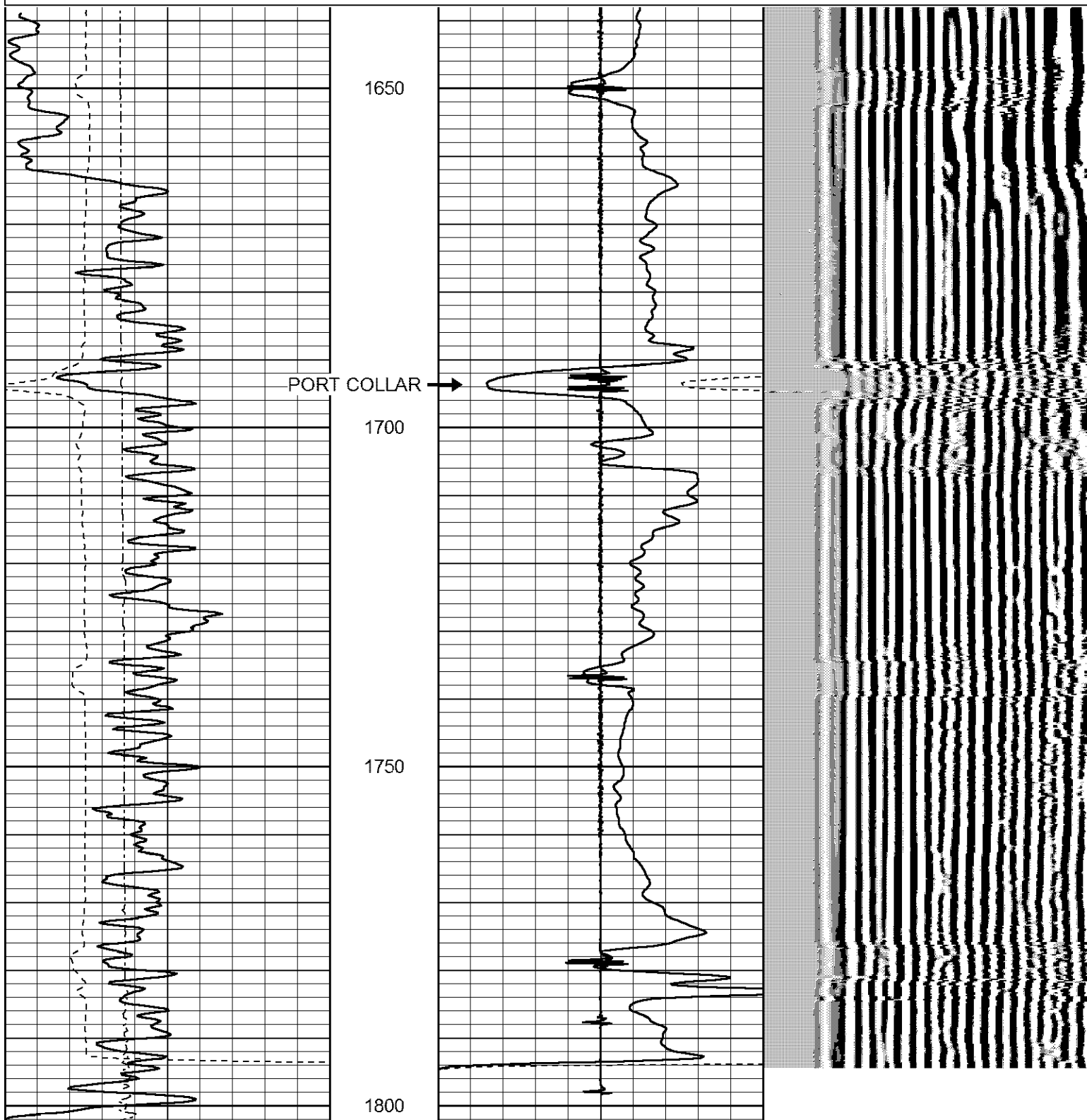
THANK YOU FOR USING GRESSEL OIL FIELD SERVICE!



PORT COLLAR

Database File: honasa2.db
 Dataset Pathname: pass4
 Presentation Format: cbl02
 Dataset Creation: Wed Sep 27 14:52:20 2017 by Log 7.0 B1
 Charted by: Depth in Feet scaled 1:240

0	Gamma Ray (GAPI)	150	5	Collar Locator	-5	200	VARIABLE DENSITY	1200
320	TT3 (usec)	120	0	Amplitude (mV)	100			
0	LTEN (lb)	1500	0	X5 Amplitude (mV)	20			



0	Gamma Ray (GAPI)	150	5	Collar Locator	-5	200	VARIABLE DENSITY	1200
320	TT3 (usec)	120	0	Amplitude (mV)	100			
0	LTEN (lb)	1500	0	X5 Amplitude (mV)	20			



Field Service

P.O. BOX 438
Haysville, KS 67060

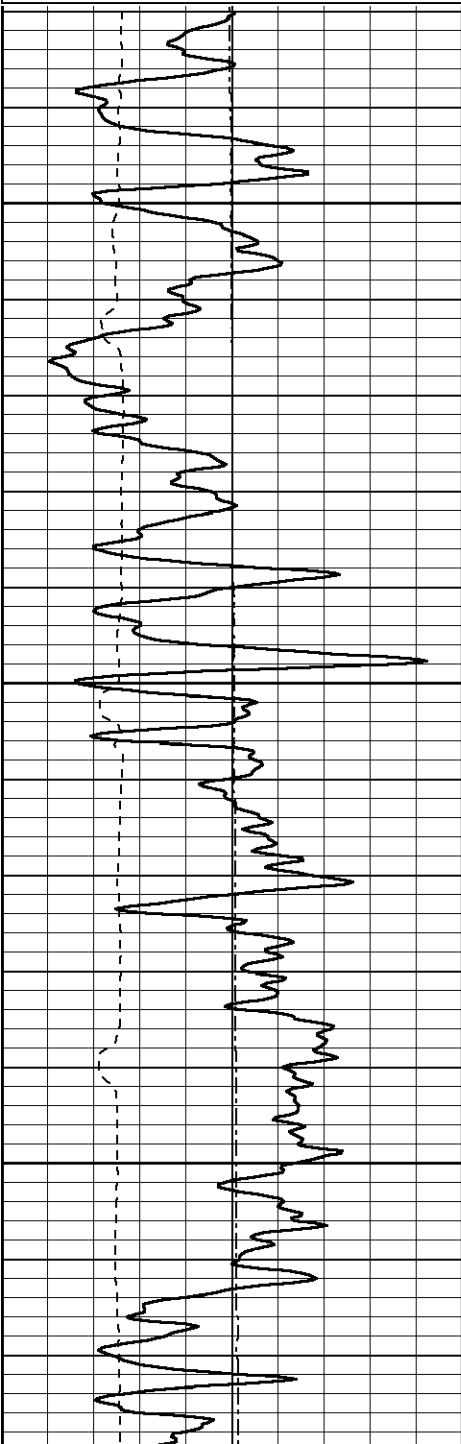
MAIN PASS

Database File: honasa2.db
Dataset Pathname: pass3
Presentation Format: cbl02
Dataset Creation: Wed Sep 27 14:19:05 2017 by Log 7.0 B1
Charted by: Depth in Feet scaled 1:240

0	Gamma Ray (GAPI)	150
320	TT3 (usec)	120
0	LTEN (lb)	1500

5	Collar Locator	-5
0	Amplitude (mV)	100
0	X5 Amplitude (mV)	20

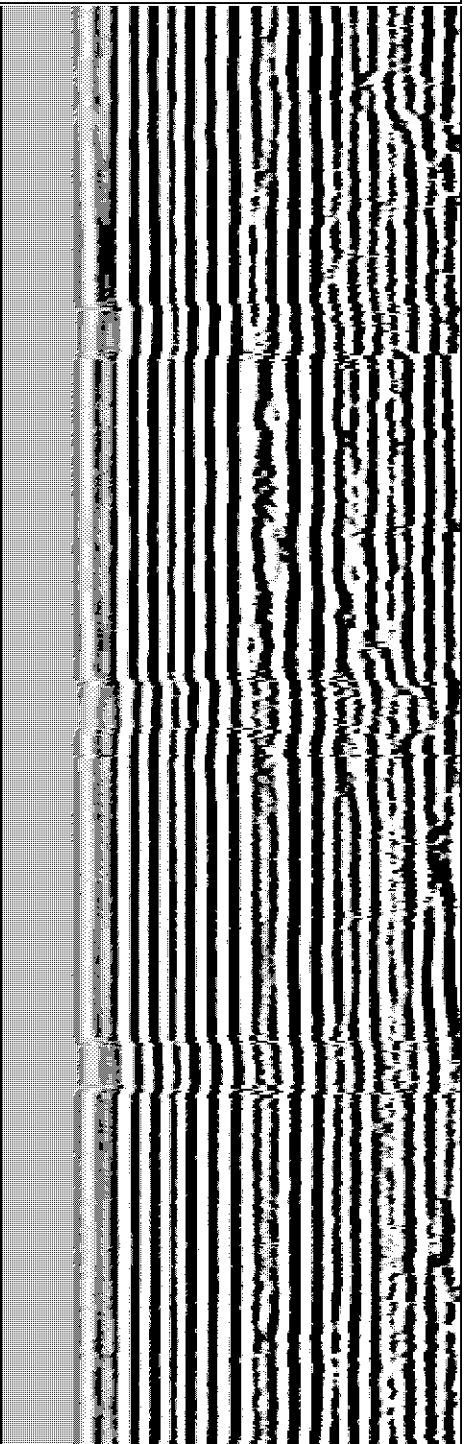
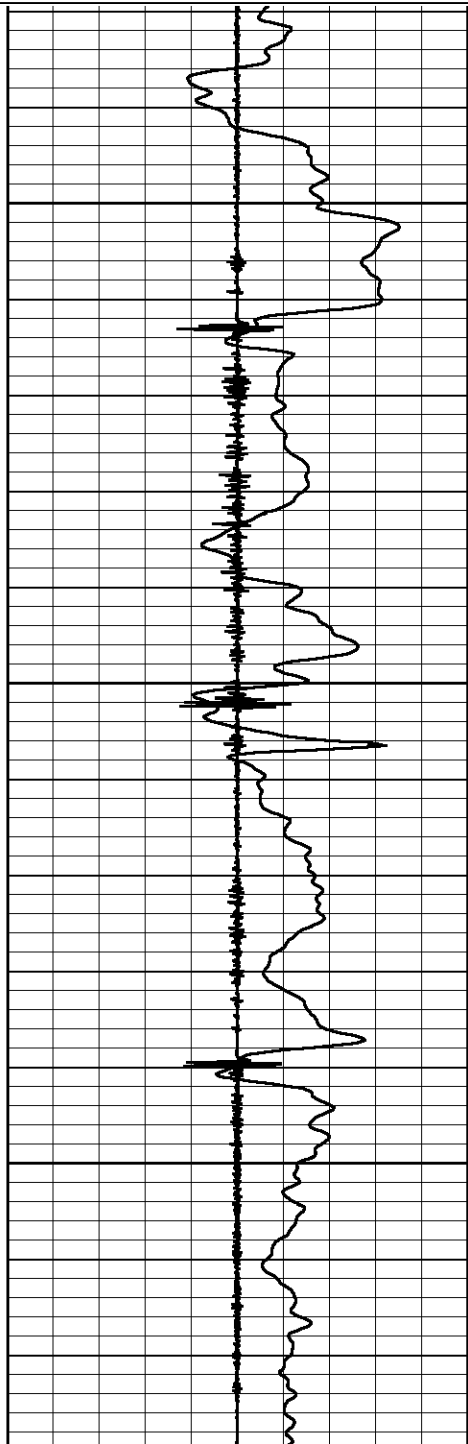
200 VARIABLE DENSITY 1200

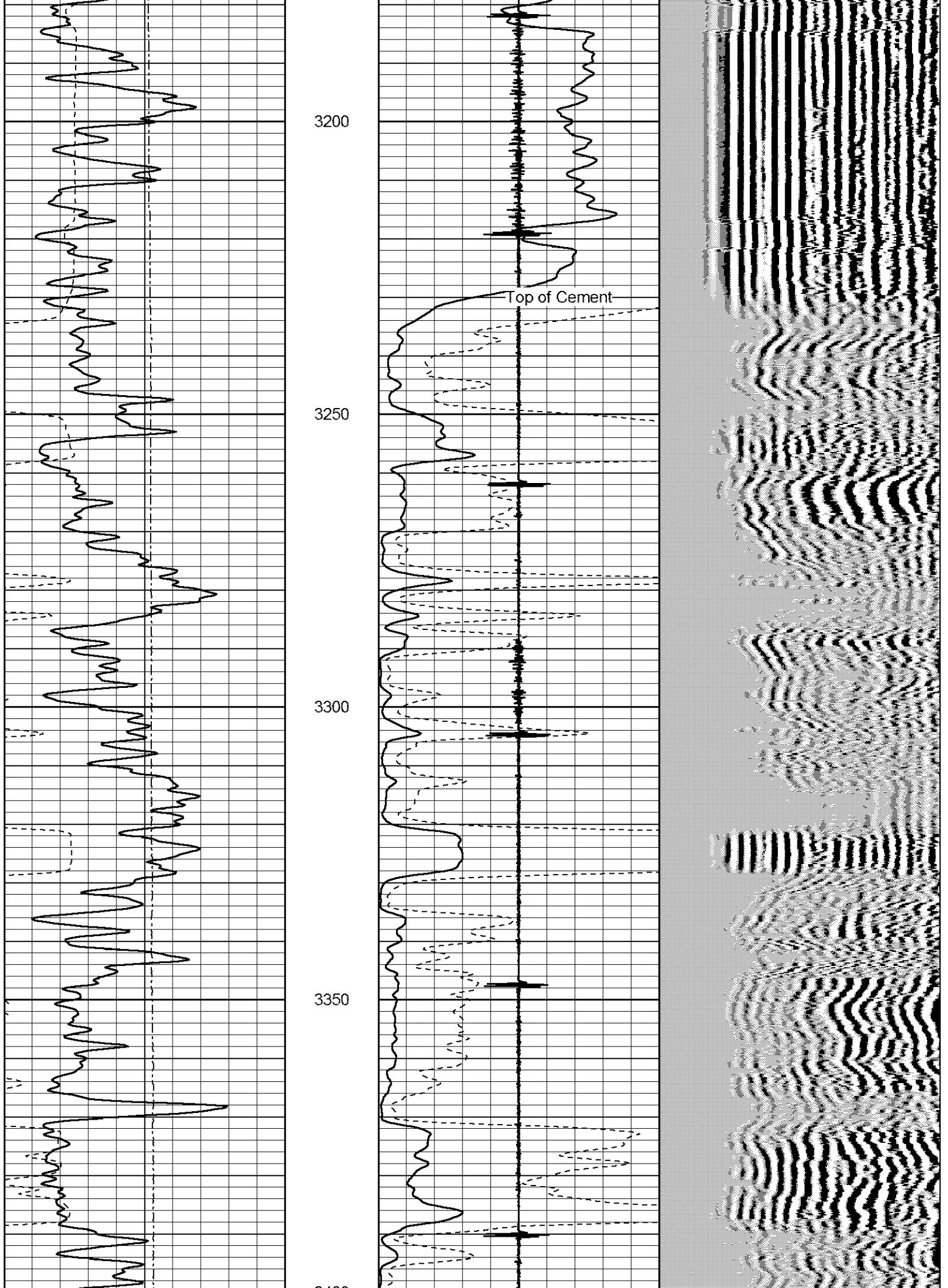


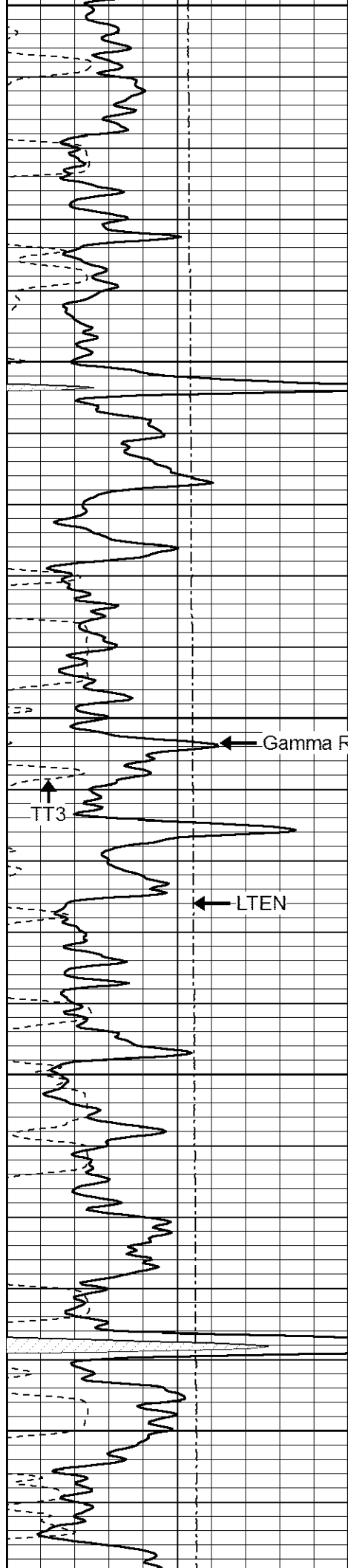
3050

3100

3150







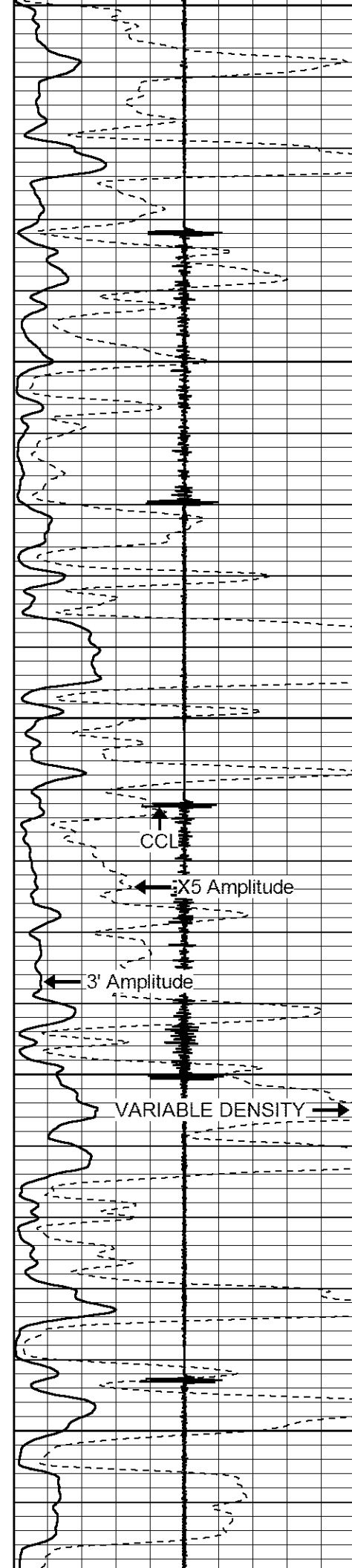
3400

3450

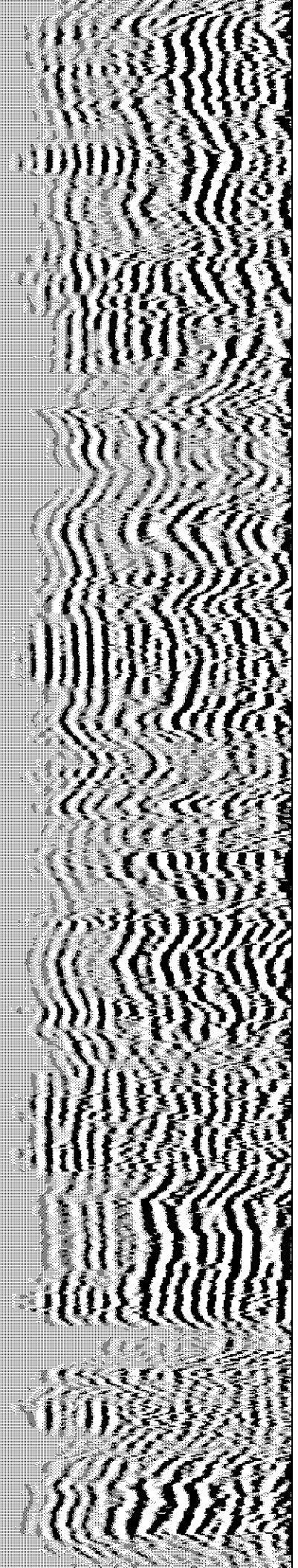
3500

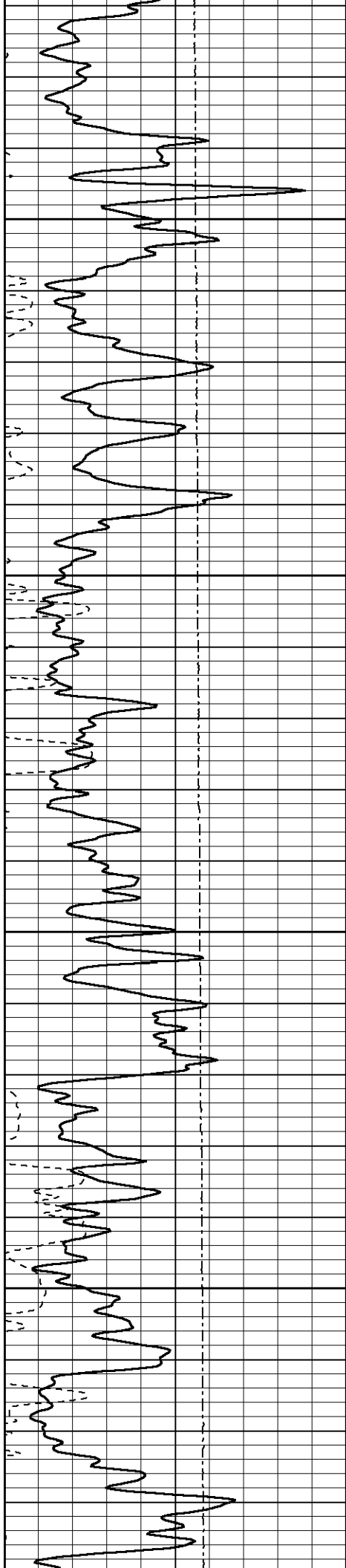
3550

3600



VARIABLE DENSITY →



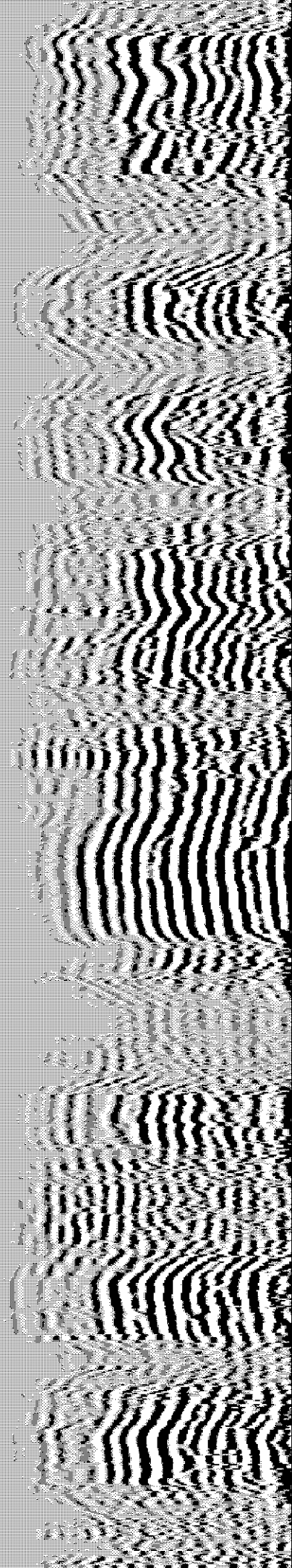
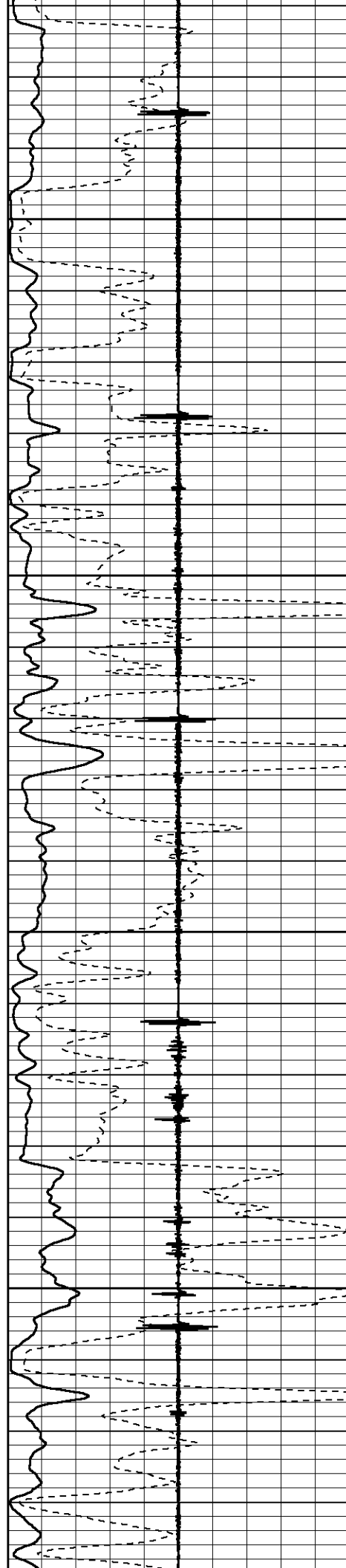


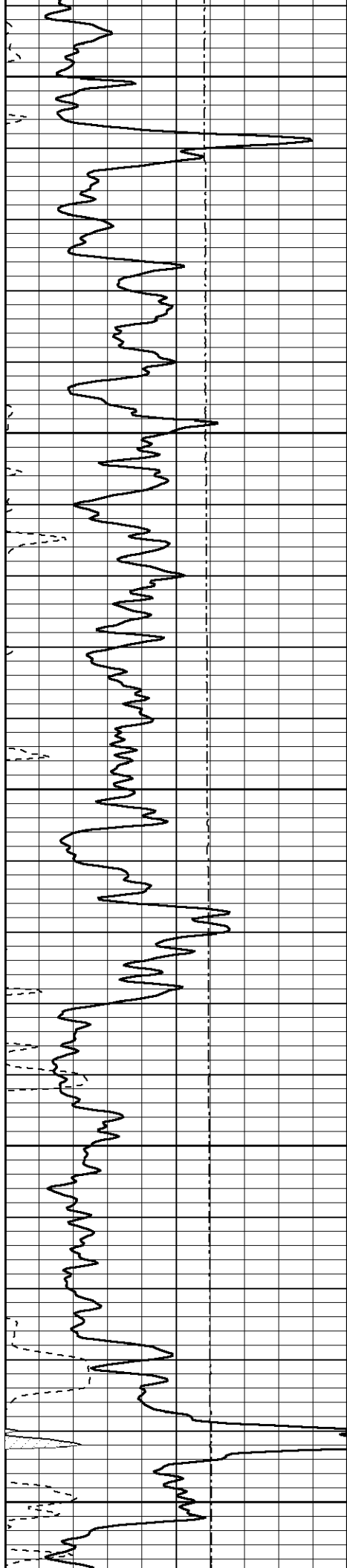
3650

3700

3750

3800





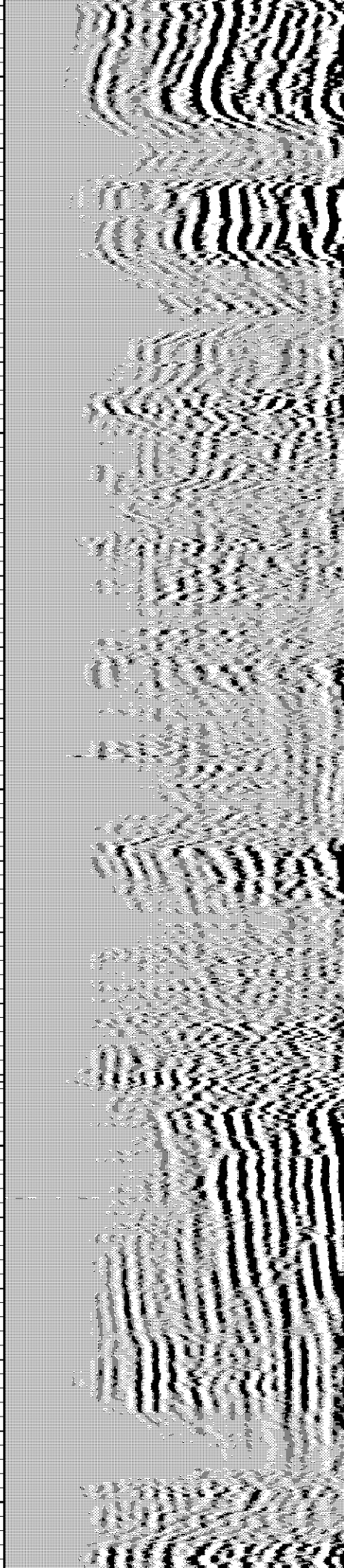
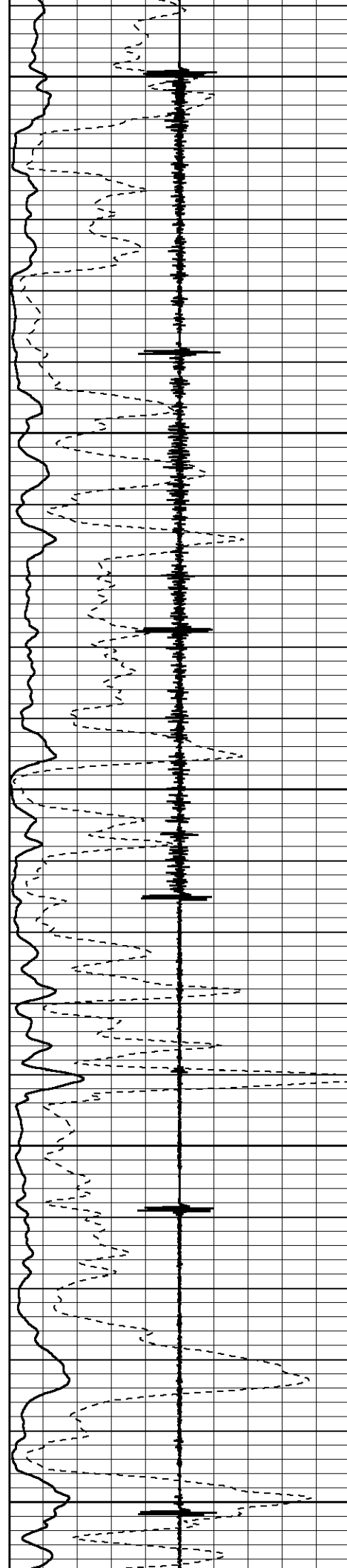
3850

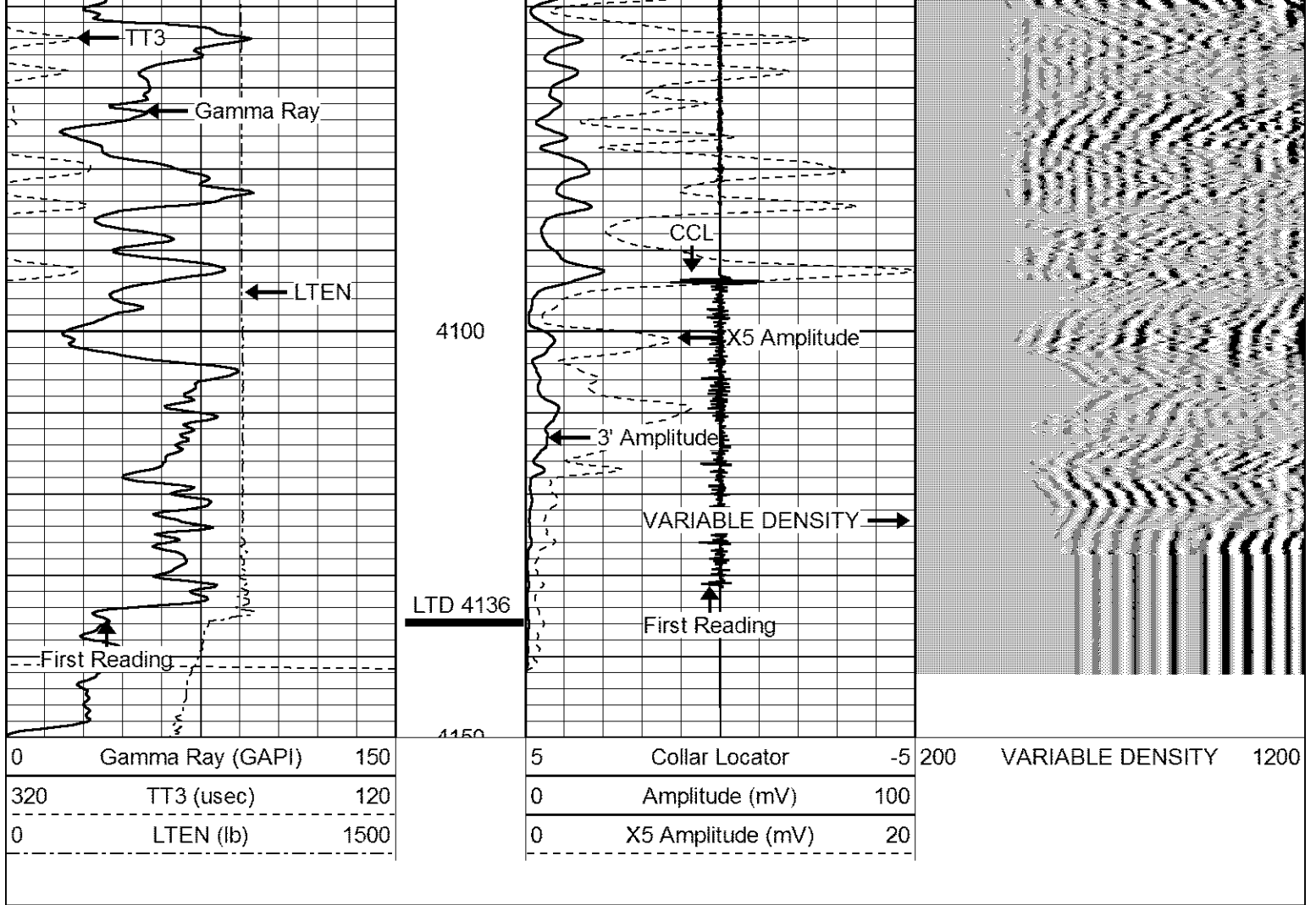
3900

3950

4000

4050



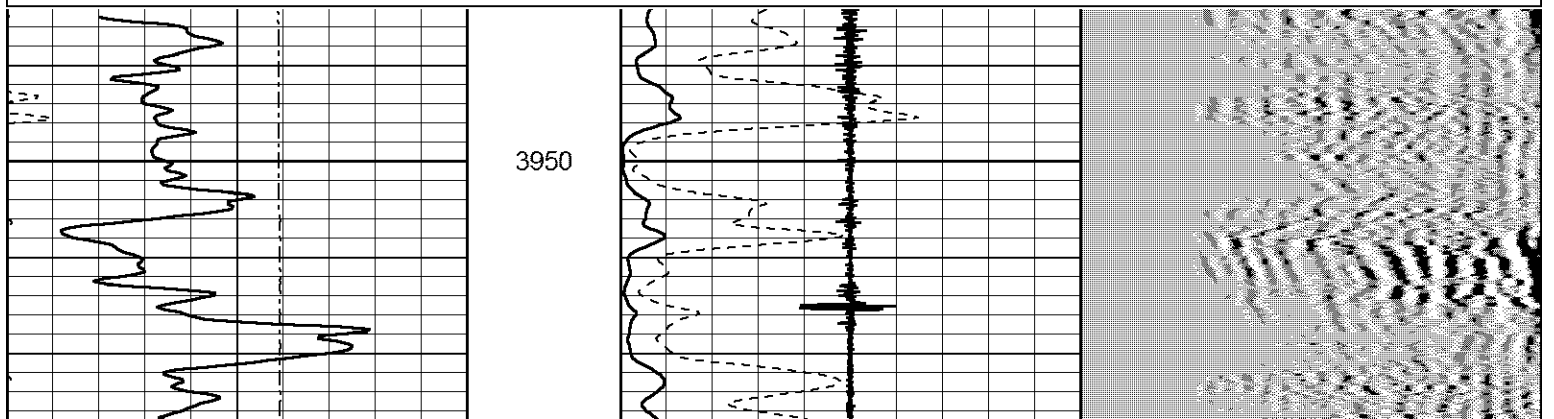


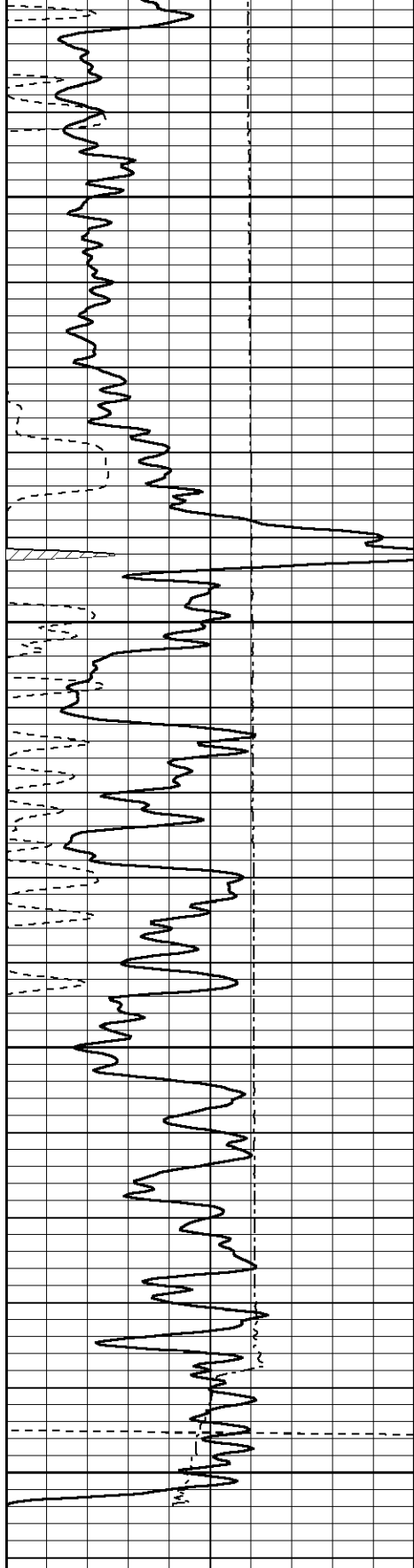
CRESSLER OIL 
 Field Service
 P.O. BOX 438
 Haysville, KS 67060

REPEAT SECTION

Database File: honasa2.db
 Dataset Pathname: pass2
 Presentation Format: cbl02
 Dataset Creation: Wed Sep 27 14:10:19 2017 by Log 7.0 B1
 Charted by: Depth in Feet scaled 1:240

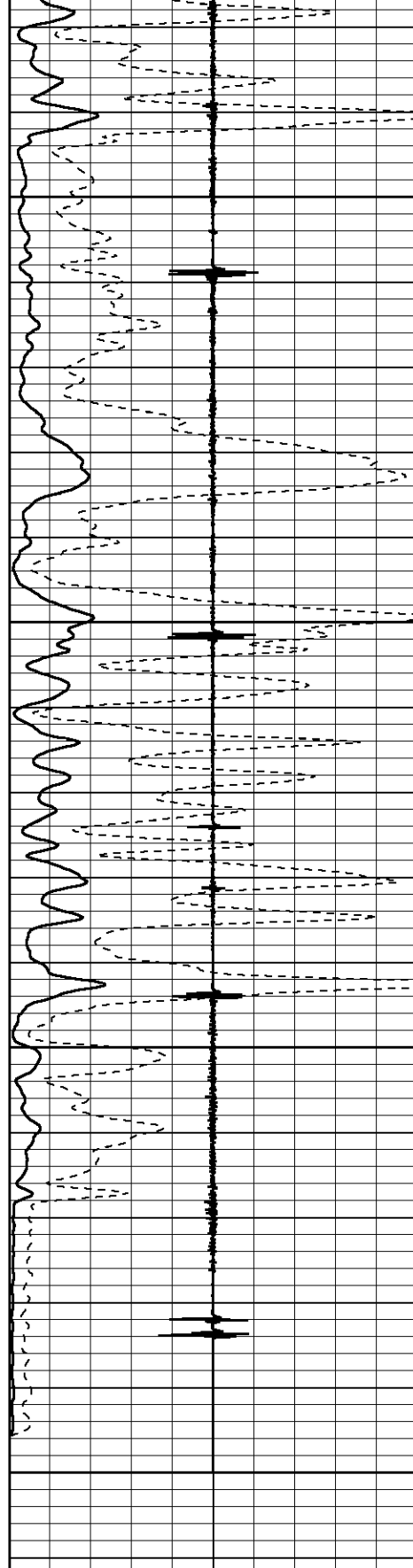
0	Gamma Ray (GAPI)	150	5	Collar Locator	-5	200	VARIABLE DENSITY	1200
320	TT3 (usec)	120	0	Amplitude (mV)	100			
0	LTEN (lb)	1500	0	X5 Amplitude (mV)	20			



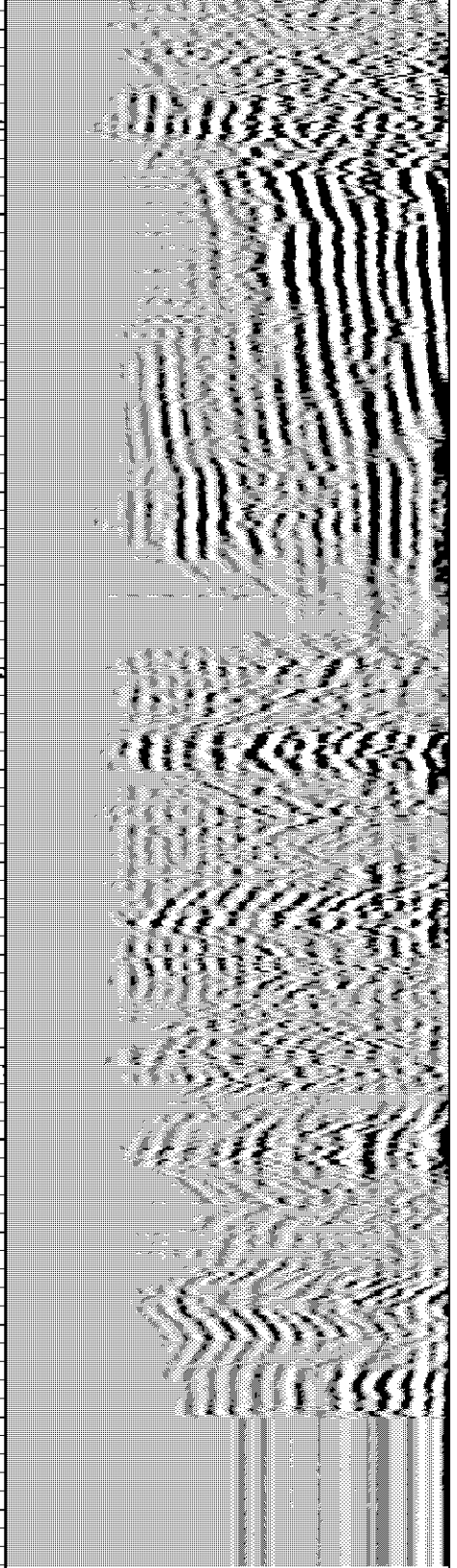


0	Gamma Ray (GAPI)	150
320	TT3 (usec)	120
0	LTEN (lb)	1500

4000
4050
4100
4150



5	Collar Locator	-5
0	Amplitude (mV)	100
0	X5 Amplitude (mV)	20



200	VARIABLE DENSITY	1200
-----	------------------	------

Sensor	Offset (ft)	Schematic	Description	Len (ft)	OD (in)	Wt (lb)

			STNDRD Standard Cable Head	1.00	1.69	10.00
WVF3	8.76		CBL-probecbl (probecbl1) probe cbl	8.75	2.75	92.00
WVF5	7.76					
CCL	3.69		CCL-Probe (275) probe ccl	1.55	2.75	30.00
GR	0.90		GR-probegr (progr1) probe gamma ray	3.02	2.75	20.00

Dataset: honasa2.db: field/well/run1/pass4
 Total Length: 14.32 ft
 Total Weight: 152.00 lb
 O.D.: 2.75 in