



TRILOBITE TESTING, INC.

DRILL STEM TEST REPORT

Vincent Oil Corporation
 200 W Douglas Ave #725
 Wichita, KS 67202
 ATTN: Tom Dudgeon

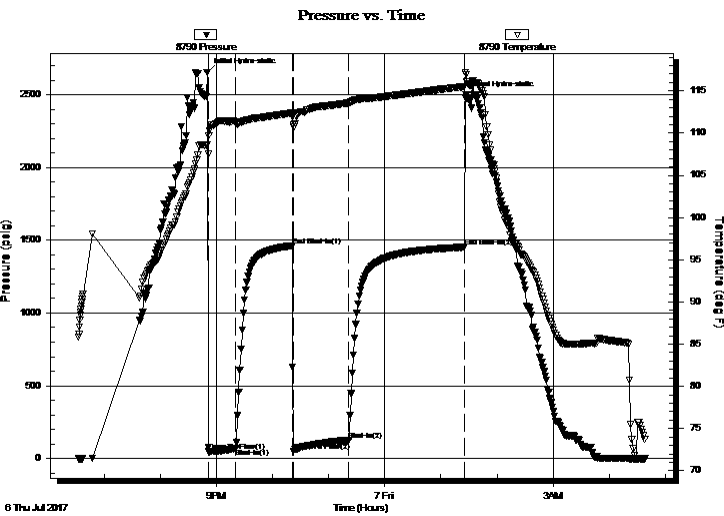
34-28S-23W Ford
Keough 6-34
 Job Ticket: 63605 **DST#: 4**
 Test Start: 2017.07.06 @ 18:32:54

GENERAL INFORMATION:

Formation: **Mississippi**
 Deviated: No Whipstock: ft (KB)
 Time Tool Opened: 20:52:09
 Time Test Ended: 04:38:54
 Interval: **5259.00 ft (KB) To 5281.00 ft (KB) (TVD)**
 Total Depth: 5281.00 ft (KB) (TVD)
 Hole Diameter: 7.88 inches Hole Condition: Good
 Test Type: Conventional Bottom Hole (Reset)
 Tester: Leal Cason
 Unit No: 68
 Reference Elevations: 2544.00 ft (KB)
 2531.00 ft (CF)
 KB to GR/CF: 13.00 ft

Serial #: 8790 Inside
 Press@RunDepth: 127.76 psig @ 5260.00 ft (KB) Capacity: 8000.00 psig
 Start Date: 2017.07.06 End Date: 2017.07.07 Last Calib.: 2017.07.07
 Start Time: 18:32:59 End Time: 04:38:54 Time On Btm: 2017.07.06 @ 20:50:24
 Time Off Btm: 2017.07.07 @ 01:26:54

TEST COMMENT: IF: Strong Blow , BOB in 3 minutes
 IS: No Blow Back
 FF: Strong Blow , BOB immediate, GTS in 1 minute, Gauged & Caught Sample
 FS: 1 inch Blow Back



PRESSURE SUMMARY

Time (Min.)	Pressure (psig)	Temp (deg F)	Annotation
0	2652.97	108.58	Initial Hydro-static
2	48.52	109.66	Open To Flow (1)
31	68.86	111.37	Shut-In(1)
91	1461.33	112.40	End Shut-In(1)
93	52.17	110.99	Open To Flow (2)
152	127.76	113.56	Shut-In(2)
276	1452.66	115.50	End Shut-In(2)
277	2496.45	116.95	Final Hydro-static

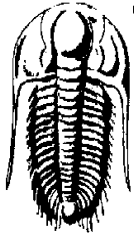
Recovery

Length (ft)	Description	Volume (bbl)
0.00	4885 GIP	0.00
60.00	OCW 30%O 70%W	0.30
122.00	MVCO 20%M 30%W 50%O	0.60
152.00	SVMCO 10%W 30%M 60%O	2.13

* Recovery from multiple tests

Gas Rates

	Choke (inches)	Pressure (psig)	Gas Rate (Mcf/d)
First Gas Rate	0.25	12.00	41.88
Last Gas Rate	0.25	12.00	41.88
Max. Gas Rate	0.25	12.00	41.88



**TRILOBITE
TESTING, INC.**

DRILL STEM TEST REPORT

FLUID SUMMARY

Vincent Oil Corporation

34-28S-23W Ford

200 W Douglas Ave #725
Wichita, KS 67202

Keough 6-34

Job Ticket: 63605

DST#: 4

ATTN: Tom Dudgeon

Test Start: 2017.07.06 @ 18:32:54

Mud and Cushion Information

Mud Type: Gel Chem

Cushion Type:

Oil API:

deg API

Mud Weight: 9.00 lb/gal

Cushion Length:

ft

Water Salinity:

56000 ppm

Viscosity: 50.00 sec/qt

Cushion Volume:

bbbl

Water Loss: 9.16 in³

Gas Cushion Type:

Resistivity: ohm.m

Gas Cushion Pressure:

psig

Salinity: 6200.00 ppm

Filter Cake: 0.02 inches

Recovery Information

Recovery Table

Length ft	Description	Volume bbbl
0.00	4885 GIP	0.000
60.00	OCW 30%O 70%W	0.295
122.00	MWCO 20%M 30%W 50%O	0.600
152.00	SWMCO 10%W 30%M 60%O	2.132

Total Length: 334.00 ft Total Volume: 3.027 bbl

Num Fluid Samples: 0

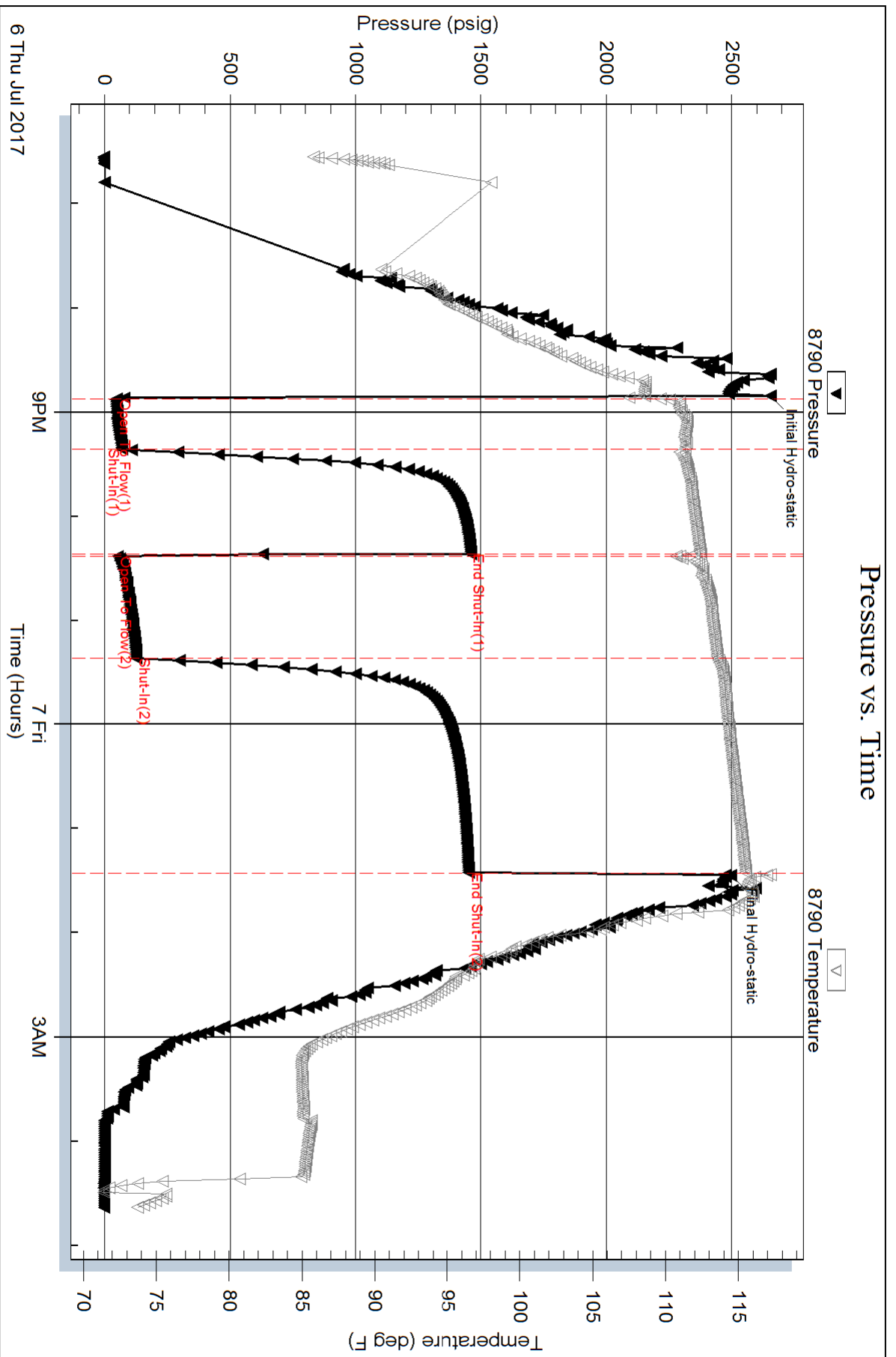
Num Gas Bombs: 0

Serial #:

Laboratory Name:

Laboratory Location:

Recovery Comments: RW w as .13 @ 80 degrees

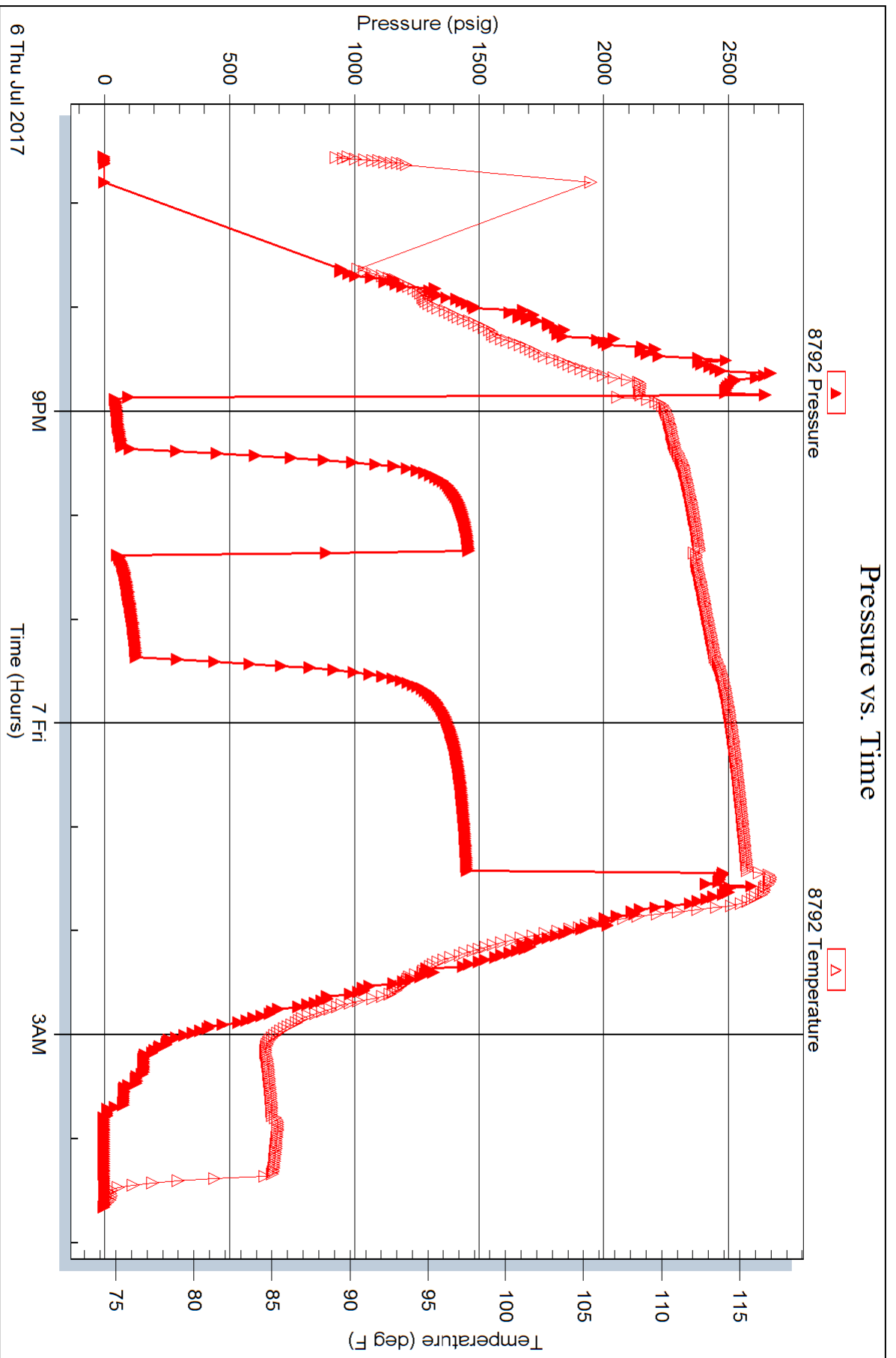


Serial #: 8792

Outside Vincent Oil Corporation

Keough 6-34

DST Test Number: 4



Trilobite Testing, Inc

Ref. No: 63605

Printed: 2017.07.07 @ 08:02:57