



Scale 1:240 Imperial

Well Name: Keough 6-34
Surface Location: SW NW NE SW 34-28S-23W
Bottom Location:
API: 15-057-20981-00-00
License Number: 5004
Spud Date: 6/26/2017 Time: 10:00 PM
Region:
Drilling Completed: 7/7/2017 Time: 3:27 PM
Surface Coordinates: 2140' FSL & 1458' FWL
Bottom Hole Coordinates:
Ground Elevation: 2531.00ft
K.B. Elevation: 2544.00ft
Logged Interval: 4250.00ft To: 5370.00ft
Total Depth: 5368.00ft
Formation: Mississippian
Drilling Fluid Type: Chemical Mud

SURFACE CO-ORDINATES

Well Type: Vertical
Longitude: -99.826812 Latitude: 37.5632572
N/S Co-ord: 2140' FSL
E/W Co-ord: 1458' FWL

OPERATOR

Company: Vincent Oil Corporation
Address: 200 W Douglas Ave Ste 725
Wichita, KS 67202
Contact Geologist: Dick Jordan
Contact Phone Nbr: 316-262-3573
Well Name: Keough 6-34
Location: SW NW NE SW 34-28S-23W API: 15-057-20981-00-00
Pool: Extension Field: Mullberry Creek
State: Kansas Country: USA

CONTRACTOR

Contractor: Duke Drilling Co., Inc.
Rig #: 7
Rig Type: Rotary
Spud Date: 6/26/2017 Time: 10:00 PM
TD Date: 7/7/2017 Time: 3:27 PM
Rig Release: 7/8/2017 Time: 5:00 PM

LOGGED BY

Company: Vincent Oil Corporation
Address: 200 W Douglas Ave Ste 725
Wichita, KS 67202

Phone Nbr: 316-262-3573
 Logged By: Geologist

Name: Tom Dudgeon

ELEVATIONS

K.B. Elevation: 2544.00ft Ground Elevation: 2531.00ft
 K.B. to Ground: 13.00ft

TOTAL DEPTH

Measurement Type:	Measurement Depth:	TVD:
RTD	5370.00	5368.00
LTD	5368.00	5368.00

DRILLING FLUID SUMMARY

Type	Date	From Depth	To Depth
Chemical	7/7/2017	3783.00ft	5370.00ft

OPEN HOLE LOGS

Logging Company: ELI Wireline
 Logging Engineer: Jeff Luebbers
 Truck #: 922339
 Logging Date: 7/7/2017 Time Spent: 7
 # Logs Run: 4 # Logs Run Successful: 4

LOGS RUN

Tool	Logged Interval	Logged Interval	Hours	Remarks	Run #
DI	0.00ft	5368.00ft	2.00		1
NEU/DEN/PE	4200.00ft	5368.00ft	2.00		1
MICRO	4200.00ft	5368.00ft	5.00		2
SONIC	0.00ft	5368.00ft	5.00		2

LOGGING OPERATION SUMMARY

Date	From	To	Description Of Operation
7/7/2017	0.00ft	5368.00ft	Logs ran successfully, MICRO tool short out on run 2, fixed and ran

CASING SUMMARY

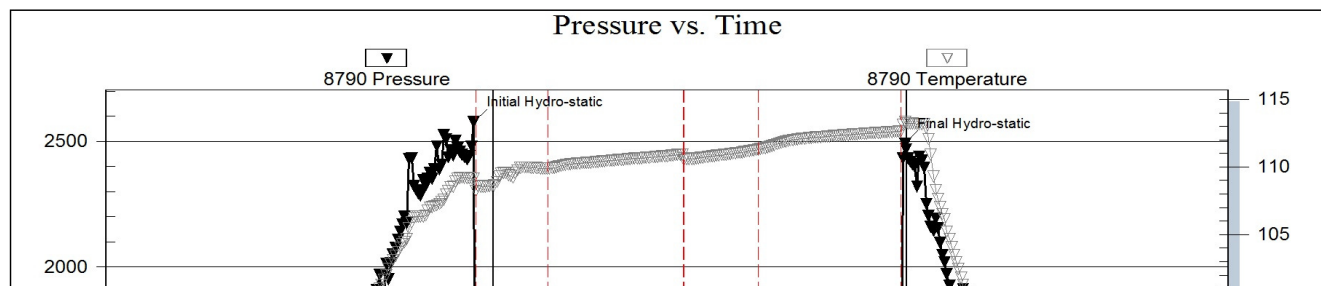
	Surface	Intermediate	Main		
Bit Size	12.25 in		7.88 in		
Hole Size	12.25 in		7.88 in		
	Size	Set At	Type	# of Joints	Drilled Out At
Surf Casing	8.625 in	648 ft	23#	15	6/28/2017 12:45 AM
Int Casing					
Prod Casing	4.5 in	5368 ft	11.6	118	7/8/2017 5:00 PM

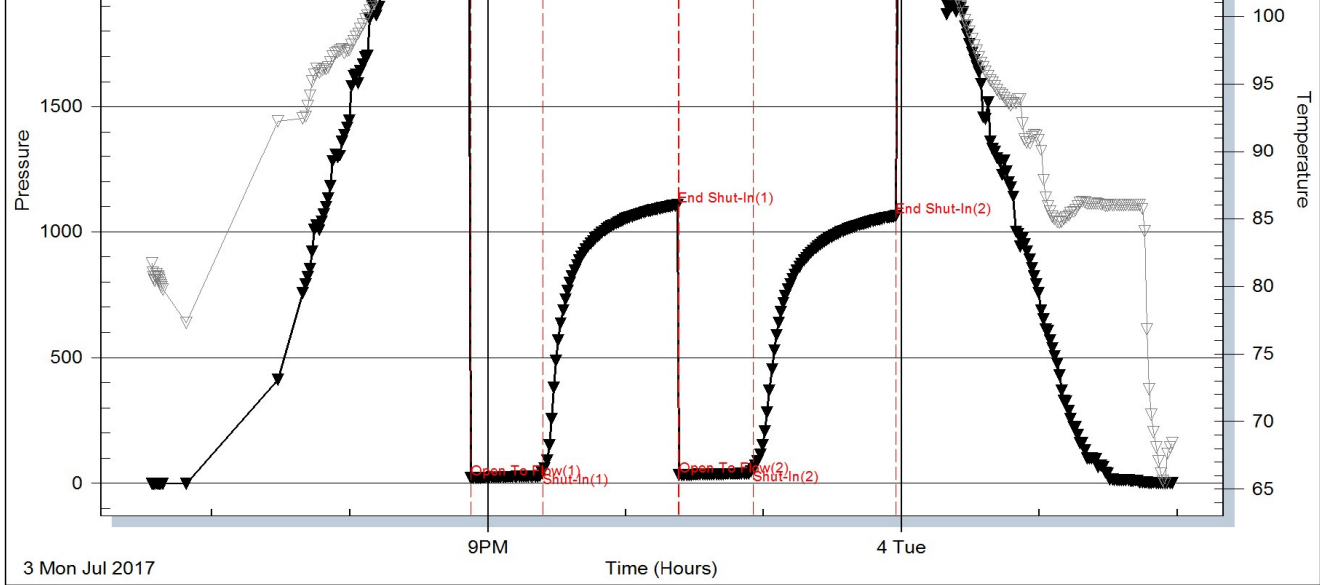
CASING SEQUENCE

Type	Hole Size	Casing Size	At
Surface	12.25 in	8.63	648.00 ft
Production	7.88 in	4.50	5368.00 ft

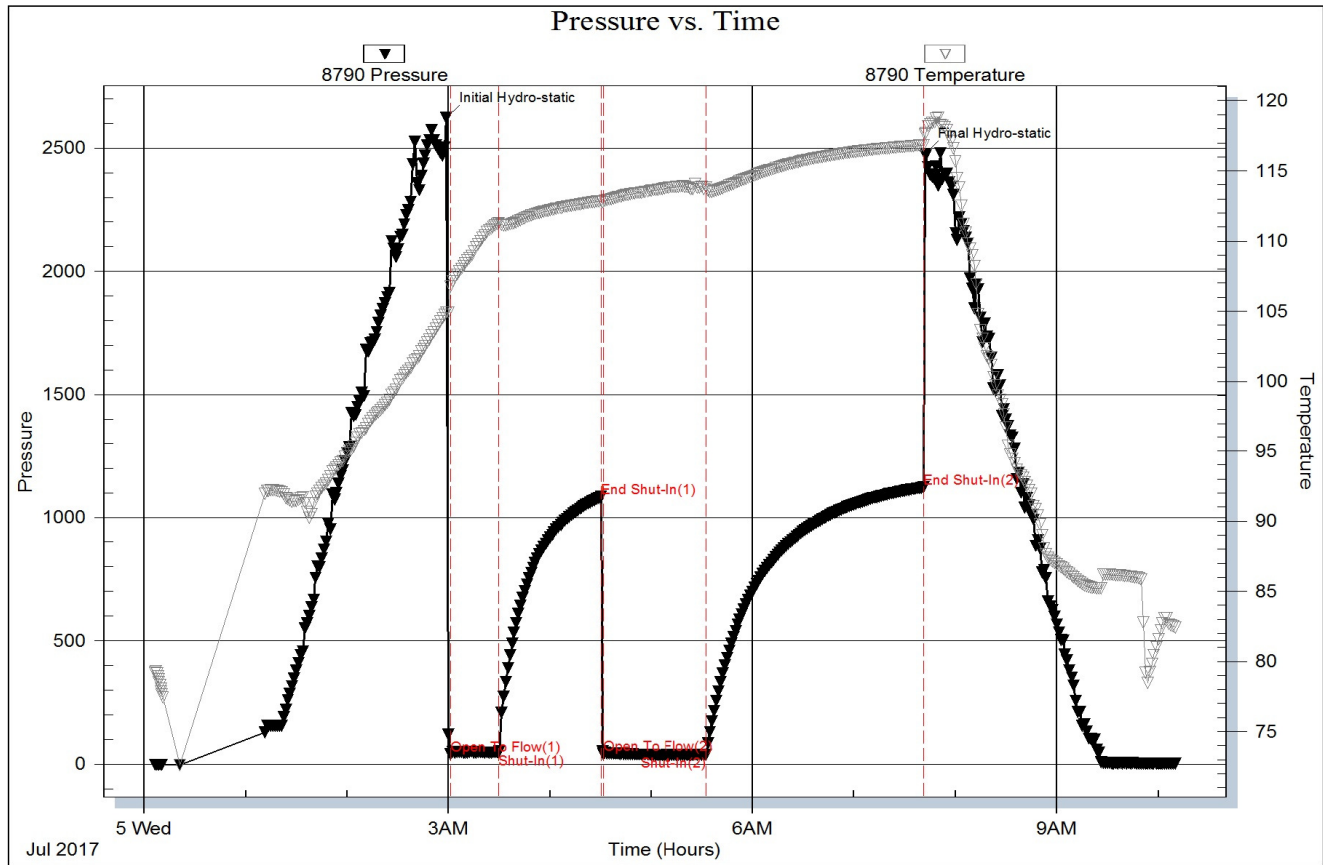
DST #1

Serial #: 8790 Inside Vincent Oil Corporation Keough #6-34 DST Test Number: 1





DST #2



DST #3

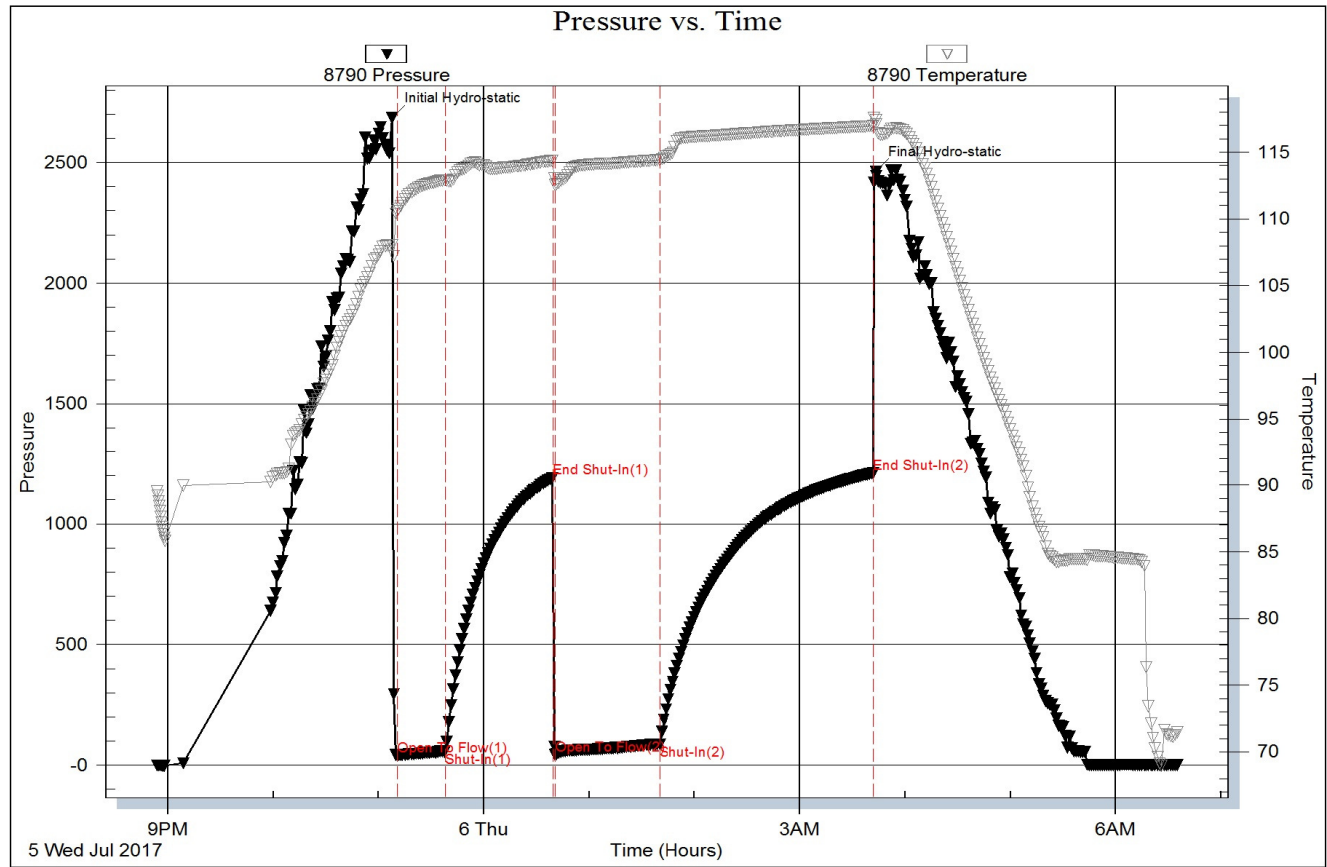
Serial #: 8790

Inside

Vincent Oil Corporation

Keough #6-34

DST Test Number: 3



Trilobite Testing, Inc

Ref. No: 63604

Printed: 2017.07.11 @ 09:39:04

DST #4

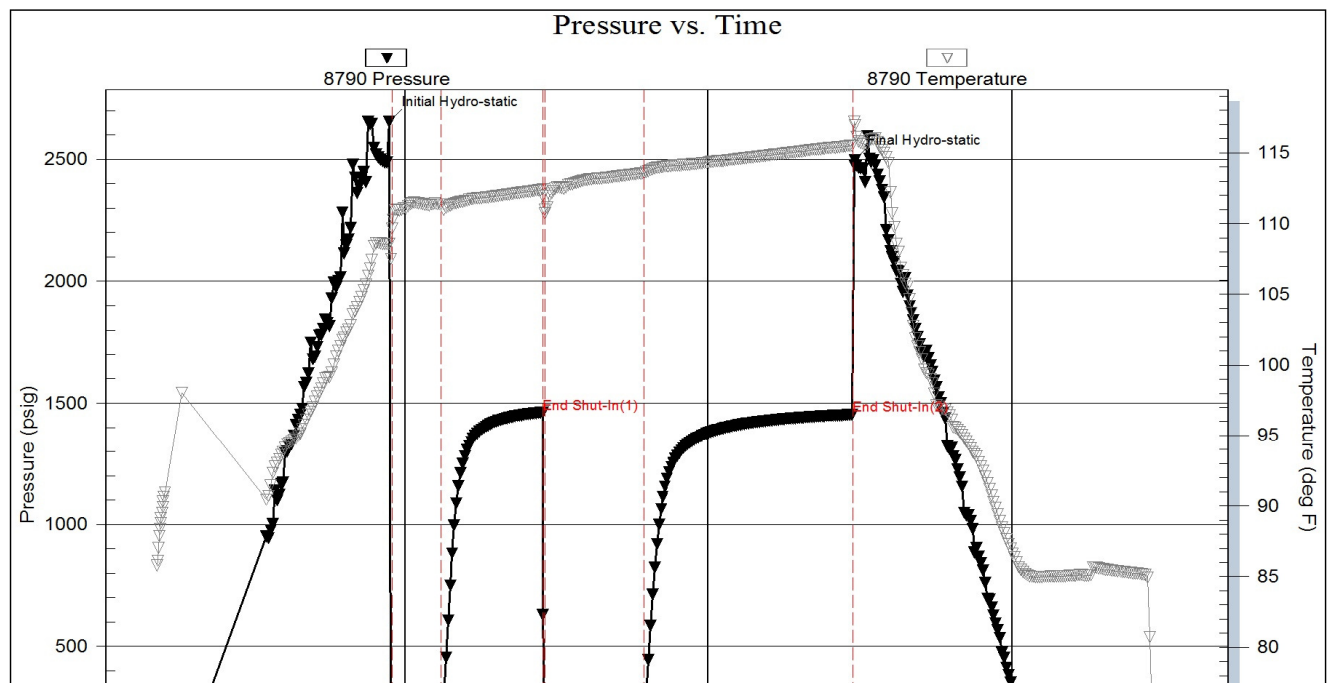
Serial #: 8790

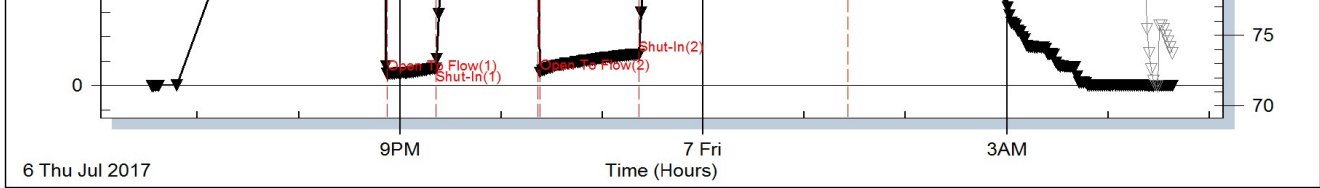
Inside

Vincent Oil Corporation

Keough #6-34

DST Test Number: 4



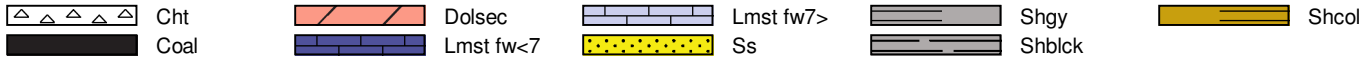


Trilobite Testing, Inc

Ref. No: 63605

Printed: 2017.07.11 @ 09:44:54

ROCK TYPES



ACCESSORIES

MINERAL

- ▲ Chert, dark
- Heavy, dark minerals
- P Pyrite
- △ Chert White

FOSSIL

- ⊖ Brachiopod
- ⊙ Crinoids
- F Fossils < 20%
- ⊘ Oolite
- ∩ Spines

STRINGER

- ▨ Dolomite
- ⊙ Conglomerate

TEXTURE

- C Chalky
- e Earthy
- FX FinexIn
- MX MicroxIn

OTHER SYMBOLS

POROSITY TYPE

- × Intercrystalline
- ⊖ Interoolitic
- V Vuggy
- P Pinpoint
- ∩ Moldic
- O Organic
- F Fracture
- e Earthy
- ⊠ Fenestral

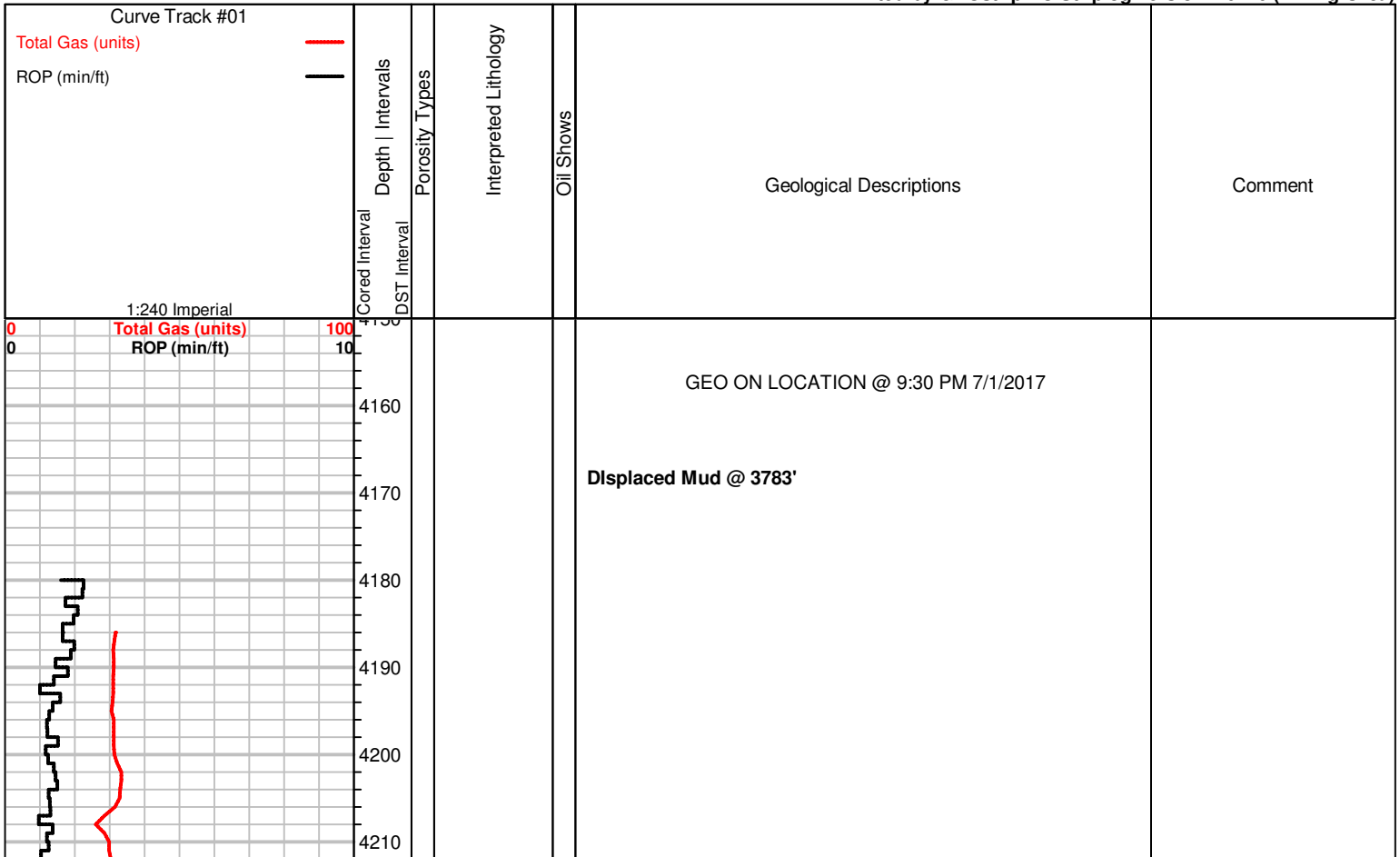
OIL SHOWS

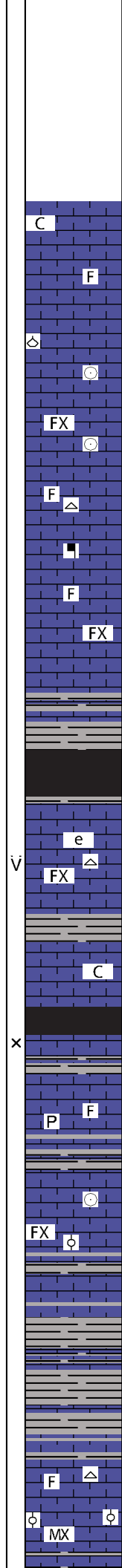
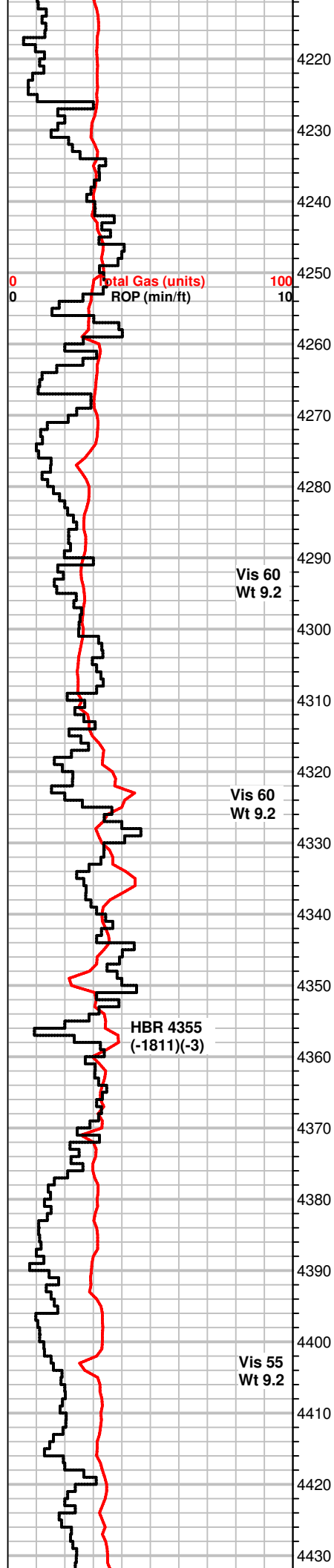
- Even Stn
- Spotted Stn 50 - 75 %
- Spotted Stn 25 - 50 %
- Spotted Stn 1 - 25 %
- Questionable Stn
- D Dead Oil Stn
- Fluorescence

INTERVALS

- Core
- DST

Printed by GEOstrip VC Striplog version 4.0.7.0 (www.grsi.ca)





MS-WS, crm to off white, vf-xln to chalky pcs, fossils, soft to firm, NS

MS, scatt WS, mostly crm, tan, brn, vf-xln, fossil frgmts, firm, scatt SH, gray, dk. gray pcs, waxy-sea green

MS, crm to lt. tan, f-xln, gritty txt, micro oolitic, scatt calcite veins, some gray pcs w/ fusulinids, NS

MS, crm to lt. gray, dense, fossils scatt, hard, NS
some SH, gray

MS-WS, lt. gray to crm/off white, f to m-xln, some chalky pcs, firm to hard, mottled, micro oolitic to sli. sandy pcs, NS

MS, crm to lt. tan, vf-xln to chalky, firm/brittle, cherty pcs, some mineral specs

MS, crm to tan, f-xln, hard, some fossil frgmts, mostly chalky pcs, some grayish brn pcs

MS-WS, crm to lt. tan, vf-xln, micro-oolitic, scatt fossils, rare blk SH, some grays

SH, blk, gray, silty in part, MS-WS, crm to tan, oolitic, f to co.gr oolitic/moldic, dense, NS

MS, crm, f-xln, earthy to chalky pcs, fossils, rare Chert, white NS

some SH, dk. gray, MS, crm to off white, A.A.

SH, blk, gas bubbles

MS-WS, tan to crm, lt. gray, scatt oolitic/fossilif. pcs, lesser SH, blk, grays

MS, tan, crm, f-xln, firm, pyrite, some chalky pcs, fossils scatt, SH, gray, blk, brn, silty in part

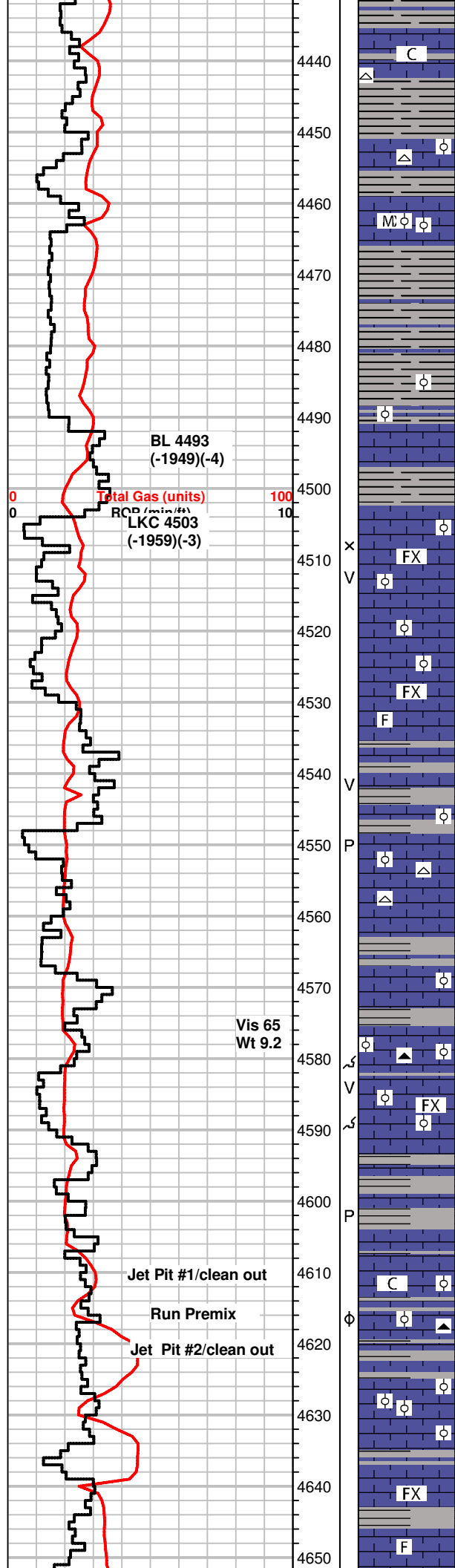
MS-WS, crm, gray, brn, f-xln, firm to hard, some dense, fossils, sub oolitic pcs, some chalky, dull fluor, NS
SH, grays

WS-MS, crm to gray, f-xln, hard, fossilif., NS
SH, grays

SH, gray, lt. gray, MS, crm to gray, f-xln, dense, hard, some Chert, white

MS, crm, vf-xln, gritty/micro oolitic txt, cherty, fossil frgmts
SH, gray

+8 UGK, shale gas



SH, gray, silty, more fresh pcs present
MS-WS, crm to tan, fossilif, micro oolitic/gritty, sli chalky pcs, NS

MS-WS, crm to tan, f-xln, fossilif, hard to firm, mineral specs, some SH, grays

WS-PS, crm to brn, mic-xln, dense, oolitic(m-gr), Chert, white, SH, gray, green, brn, silty/sandy in part

SH, scatt A.A., MS-WS, crm to lt. tan, f-xln, sub oolitic, firm to soft, some fossils, sli. chalky pcs, NS

SH, gray, brn, red, green, striated, MS-WS, gray to crm, f-xln, hard, fossilif, some chalky to cherty in part, rare pyrite

SH, influx, gray, some brn, green, MS, crm, f-xln, firm, scatt, micro oolitic, hard

MS, brn, vf-xln to mic-xln, dense, scatt fossils, sub oolitic some crm, chalky in part, firm, NS
SH, brn, gray, dk. gray green

MS, crm to off white, f-xln, gritty to sub oolitic pcs, hard, dull fluor, NS

MS, A.A., gritty, micro oolitic, hard, NS

MS, crm to tan, f-xln, gritty, silty txt in part, some off white, f-xln, fossils scatt, NS

MS, crm to off white, firm to hard, most dense, fossils rare, scatt. SH, gray, brn, dk. gray

scatt SH, gray
MS-WS, crm to off white, f-xln, dense, some pcs m-gr oolitic/fossilif, NS

MS, crm to tan, mic-xln to massive txt, dense, fossils rare, assoc Chert, white

MS, tan, gray, f-xln, gritty to massive txt, hard, scatt fossils, NS some SH, grays

MS-WS, crm to tan, f-xln, dense, fossilif, oolitic/moldic pcs rare, NS, scatt SH, gray, brn

WS-MS, crm to gray, f-xln, m to f-gr oolitic pcs, brittle, hard, Chert, brn

SH, gray, green, silty, firm, MS-WS, crm to tan, f-xln, massive, fossilif/oolitic pcs, hard, dull fluor, NS

MS-WS, A.A., some gray, gritty, fossilif., NS
SH, gray, green

MS, crm to off white, some chalky to gritty/silty txt, most pcs massive, dense, scatt oolitic pcs, Chert, blk

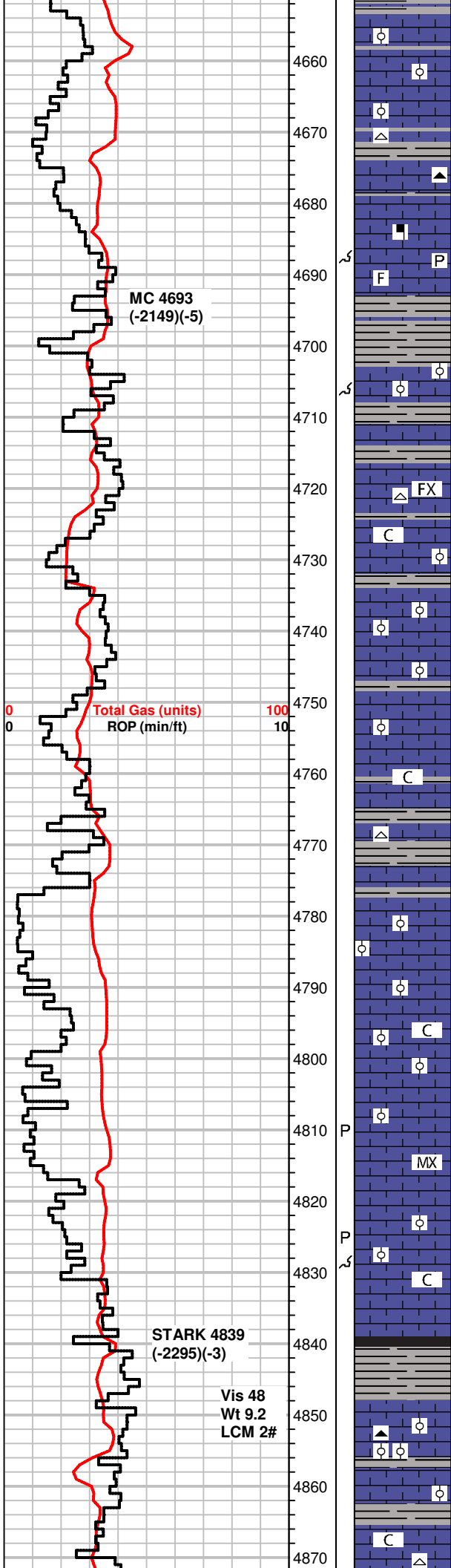
WS-MS, off white to crm, sub oolitic (f to m-gr), micro oolitic to gritty, massive, dense, NS, some pcs brn w/ mineral specs, shaly

MS-WS, gray to crm, some A.A., f-xln, chalky, soft pcs, some SH, grays, greenish, gray

SH, gray, brn, silty
MS, crm, tan, gray, f-xln, dense, rare fossils, barren, NS

working on mud pump(45 minutes)

Straight Hole Survey 1 degree



MS, crm to tan, suboolitic in part, A.A., SH, gray, greenish brn

MS-WS, tan, brn, gray, f to m-xln, hard, fossils/oolitic pcs, some mottled, NS

MS, brn, tan, rare gray, mic to f-xln, firm, brittle, rare fossils/glauc, crinoids, Chert, gray, white, rare lt. edge stn dry
SH, gray, green

MS-WS, brn to crm, m-xln, mottled fossils/minerals, dense SH, dk. gray, green, striated, pyrite

influx SH, dk. gray to gray
scatt MS, crm to tan, micro oolitic/gritty txt, hard, NS

SH, gray, dk. gray, green, silty pcs, some brn
scatt MS, tan, mic-xln, dense, f-xln to chalky pcs

MS-WS, crm to tan, f-xln to chalky, mineral specs, fossils, Chert, white, carrying SH, gray, green

SH, grays, sli. greenish, MS-WS, crm to tan, scatt gray pcs, f-xln, f-gr oolitic txt, firm to hard, NS

MS, crm to brn, f-xln, hard, dense, scatt fossil frgmts, NS

MS, crm to brn, f-xln, some pcs chalky, sub oolitic, carrying SHs from above

SH, dk. gray, grays, silty, MS-WS, crm, f-xln, dense to firm, sub oolitic, chalky in part, scatt fossils, NS

SH, gray, sea green
MS, crm to tan, f-xln, oolites, hard, scatt white Chert

SH, gray, brn, green, MS, crm, f-xln, sub oolitic, some dense, NS

MS, crm to brn, f-xln, sli mottled pcs, sub oolitic in part, fossils, most dense, some SH, gray, platy

Flood WS-PS, crm, m-xln, oolitic, moldic, chalky matrix, firm, NS, moldic por.

WS-PS, A.A., some MS, crm to brn, f-xln, massive txt, dense, NS

MS-WS, crm to tan, f-xln to chalky txt, m-gr oolites in chalky matrix, some tite, dark ooids scatt, hard to firm, Chert, brn

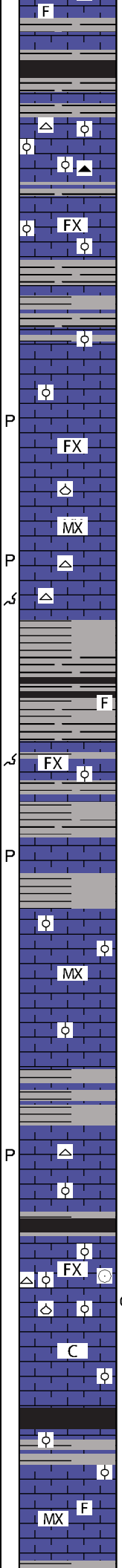
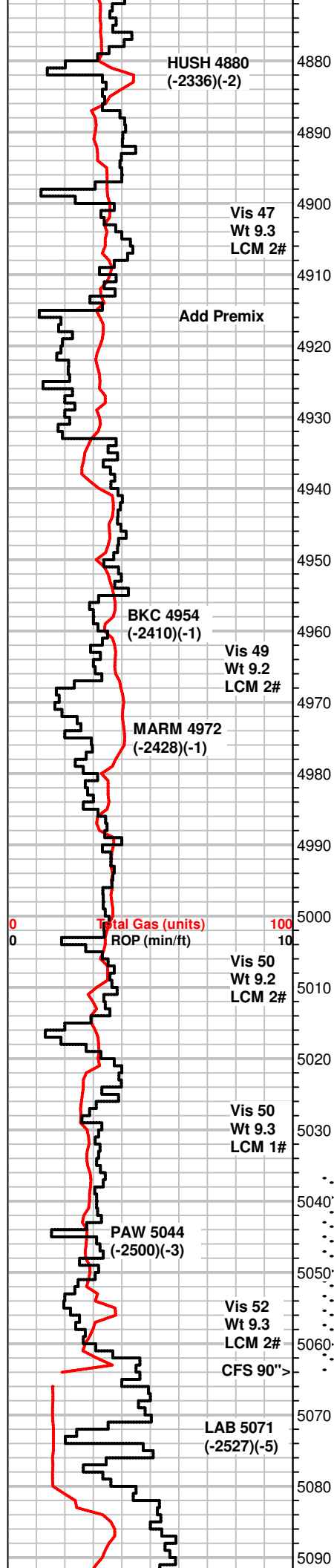
SH, brn, dk. gray

SH, grays

MS, tan to crm, f-xln w/m gr oolites in dense matrix, Chert, gray, micro oolitic

MS-WS, crm, some lt. tan, f-xln, gritty txt, most hard, dense, some firm-chalky pcs, NS

MS-WS, crm, A.A., f-xln to chalky, some dense, Chert, white,

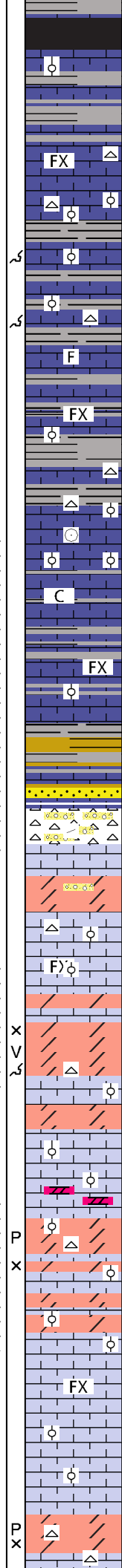
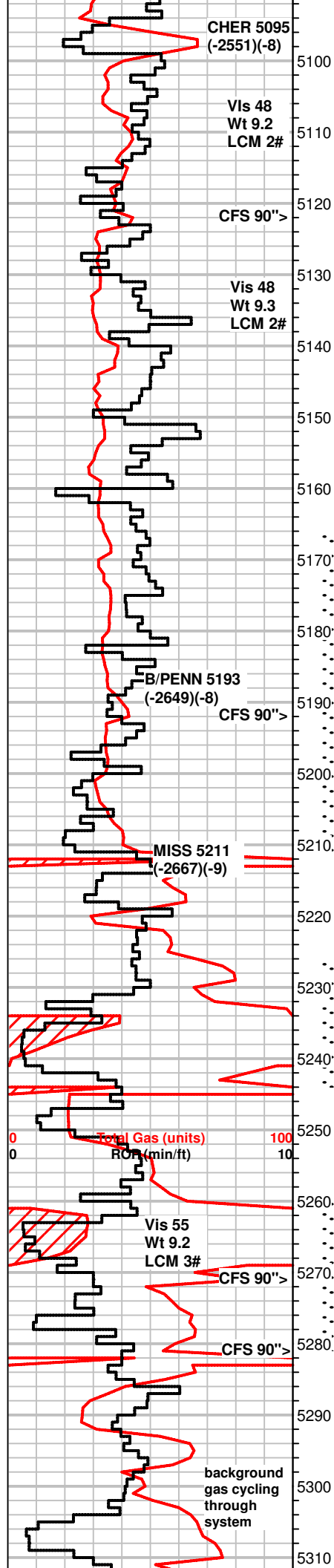


fossils
 scatt Sh, grays
 SH, blk, gray, green
 MS, crm to off white, mic-xln, dense, rare PS, mgo oolitic in tite dense matrix, Chert white, gray, blk
 MS, A.A., Chert, brn
 SH, gray, green
 MS, crm to tan, f-xln, sli. chalky, soft, friable/brittle, sli mottled pcs, some sub oolitic, SH, gray, green
 MS-WS, crm to tan, f to mic-xln, chalky pcs scatt, rare oomoldic pcs, SH, dk. gray, gray
 SH, gray, green, silty, MS, gray to crm, f-xln, some pcs gritty/sub oolitic, dense, silty to sandy in part, NS
 SH, dk. gray, gray, green, MS tan to crm, mic-xln, dense, rare fossil frgmts, NS
 FX
 flood, MS, crm, f to mic-xln, dense looking, brittle, NS
 Chert, white, gray, fossils, some SH, grays, greenish gray
 MX
 MS-WS, brn to crm, f- to mic-xln, dense to chalky pcs, oolitic(micro to m-gr), gritty pcs, Chert, white, tan, fossils, scatt SH, A.A.
 Increase in SH, gray, MS, crm to rare gray pcs, f-xln, dense, silty looking, NS
 MS, gray, tan, f-xln, hard, dense, scatt fossils, rare WS, crm oolitic, hard tite calcite mtrx, SH, grays
 F
 Inc. in SH, gray, MS-WS, crm to gray, tan, f-xln, gritty/silty pcs, glauc, sub oolitic/fossils scatt, NS
 FX
 WS-MS, A.A., dense
 SH, gray, greenish gray, silty, striated
 SH, gray, greenish gray, rare pyrite, MS-WS, crm, f-xln, dense, hard, some f-gr oolitic, dull fluor, NS
 P
 MS-WS, crm to tan, f-xln, sub oolitic, some mic-xln, massive, dense, scatt SH, gray
 MS-WS, crm, brn, gray, f-xln, hard, some pcs oolitic, m-gr. dense, gritty txt, SH, gray, green
 MS, crm to brn, f to mic-xln, dense, oolitic pcs scatt, NS some SH, gray
 MS, brn to crm, vf to mic-xln, massive, dense, hard, NS scatt chalky pcs, suboolitic pcs rare
 SH, blk, carb, gray, red/gray
 MS-WS, brn, to crm, f-xln, oolitic to fossilif., dense, hard, some brittle, pcs becoming suboolitic, some chalky dull fluor, 1 pc with bright fluor on edge, streaming cut, no odor, Chert, white
 O
 MS, crm, f-xln, hard to firm, dense pcs, some chalky, rare fossils, Chert, white scatt SH, blk, gray
 MS, crm to tan, chalky to f-xln, firm to dense, NS
 SH, gray to dk. gray
 MS, crm, f-xln, massive pcs, hard, dense, rare fossis, some oolitic in part, Chert, opaque, fossils, rare SH, gray
 MS-WS, crm to brn, f-xln to mic-xln, dense, gritty pcs, fossilif., sub oolitic, dull fluor, NS
 MX
 F

DST #1 5036-5064
Pawnee
30-60-30-60
WB
WB
Rec: 5' Mud
IH 2576#
IF 20-46#
ISIP 1106#
FF 32-57#
FSIP 1062#
FH 2491#
Temp 113°F

+8 UGK
PIPE STRAP @ 5064' 4.63
Long-Windy conditions

GAS DETECTOR DOWN
FROM 5063-5080
Failed Extractor



SH, blk, grays
MS-WS, crm to brn, f-xln to mic-xln, dense, gritty pcs, fossils, sub oolitic, dull fluor, NS

SH, gray, green, rare dk. gray
MS, crm to tan, some gray, f-xln, most A.A., lesser fossils, Chert, white, fossilif.

MS, crm to tan, f to mic-xln, dense, fossils, micro oolitic/gritty txt in pcs, Chert, white, tan

MS-WS, crm to brn, some sli. gray, f to m-xln, hard, some massive, dense, fossilif., dull fluor, NS, scatt SH, gray, blk,

SH, blk, gray
MS, crm to tan, gray, f-xln, earthy to massive, hard, some oolitic, f to m-gr ooids in tite mtrx, Chert, tan, white, fossils lesser SH, blk to gray

MS-WS, crm to brn, f-xln, firm to hard, fossils, scatt oolitic pcs, dull fluor, NS, SH, blk, gray

MS, crm, gray, some brn, massive mic to f-xln txt, hard, some fossils, crm pcs chalky, some sub oolitic, Chert, white SH, A.A., lesser

Inc. in SH, blk, gray, green, MS-WS, brn to gray, f- to m-xln, hard, dense, sub oolitic to fossilif(crinoids, ringed m-gr ooids), some shaly pcs, NS

MS-WS, crm to brn, chalky to f-xln, dense, firm to hard, sub oolitic, dull fluor, NS, rare SH, blk, gray

MS-WS, crm to brn, A.A., some scatt oolitic pcs, m-gr ooids in tite mtrx, dull fluor, NS

MS-WS, crm to brn, gray, ft mic-xln, dense, fossilif, some pcs(5%) w/ bright fluor, most dull mineral fluor, 3 pcs inst. streaming cut, faint odor in bag, rare light stn, no vis. por.

SH, blk, gray, sea green, MS-WS, A.A., Chert, white, brn, fossils, scatt MS-WS, crm, f-xln, firm, chalky, carrying shows

SH, varicolored, sandy in part, SS clusters, Qtz pebbles, pitted, frosted, white, green, f-gr, sorted, rounded, tite, Chert, vary colored, mostly white, some wethrd, **live oil droplets, good spotty stn, gas bubbles, flash odor, milky to streaming cut. spty to even stain dry** MS-PS, crm, oolitic, m-gr ooids in tite matrix, bright fluor, milky cut(carrying above?)

Dolo, gray, vf to mic-xln txt, hard, tite looking, NS
Chert, A.A., lesser, still w/ stn, no odor
MS, crm to off white, f-xln, sub oolitic, fossilif., NS

WS-PS, off white to crm, some brn, f-xln, chalky to oolitic pcs, some dense, fossilif., dull fluor, NS

Dolo, brn to tan, some lt. gray, f-xln to vf-sucrosic txt, firm, **good odor in bag, gas bubbles, live oil drops in tray, even stain, instant cut, int-xln to pp por.**
60" inc in Dolo, rare pcs w/vuggy por., f-xln to sub oolitic txt

Dolo, crm to gray, vf-xln, gritty txt, hard, mineral fluor, some pcs slow milky cut.
WS-PS, off white to crm, f-xln, hard, dense pcs, oolitic, m-gr, some w/ ringed ooids, tite calcite mtrx, dull fluor, NS

Dolo, gray to scatt crm pcs, f-xln, some pcs sugary txt, some oolitic (m-gr), firm to friable, **fair odor, spotty to even stn, free oil in tray, bright flour, streaming inst. cut to slow milky cut**

Dolo., A.A., crm to lt brn, vf-xln to m-xln oolitic pcs, firm to brittle, mineral fluor, **gold flour, good odor, spotty stn, inst. cut**

MS-PS, crm to off white, f-xln, oolitic to sub oolitic, fossilif, some pcs sli. dolomitic, dull fluor, NS

MS-PS, A.A., some pcs brn, dense, mic-xln, fossil/oolitic, NS scatt Dolo, brn to gray, limey, f-xln, firm, gritty txt, dull fluor, NS

Dolo, brn, f-xln, f-gr oolitic in most pcs, some m-gr, hard, to firm, Cherty pcs, dull fluor, no odor, 1 pc w/ slow milky cut(carrying?), rare very spotty stn in dry

+44 UGK

DST #2 5166-5212
B/Penn-Morrow
30-60-60-120
SB BOB 1 min
NBB
SB BOB immed.
GTS/1min
Ga .25 inch choke
27.603 MCF/10min
27.603 MCF/20min
26.810 MCF/30min
26.810 MCF/40min
26.017 MCF/50min
26.017 MCF/60min
Rec: 5097' GIP
60' GCM(5%g,95%am)
IH 2622#
IF 40-47#
ISIP 1083#
FF 42-38#
FSIP 122#
FH 2477#
Temp 119°F

+10 UGK

+16 UGK, +6 UGK recycle

Dump 50bbl gassy heavy mud and ran premix

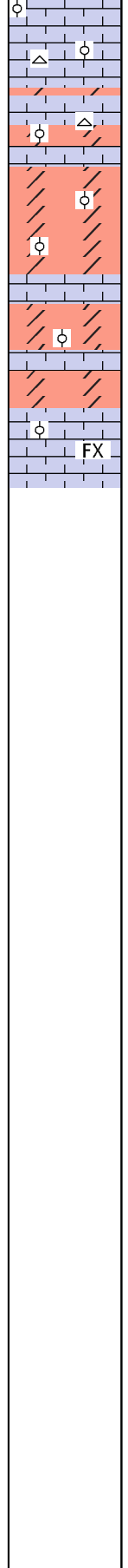
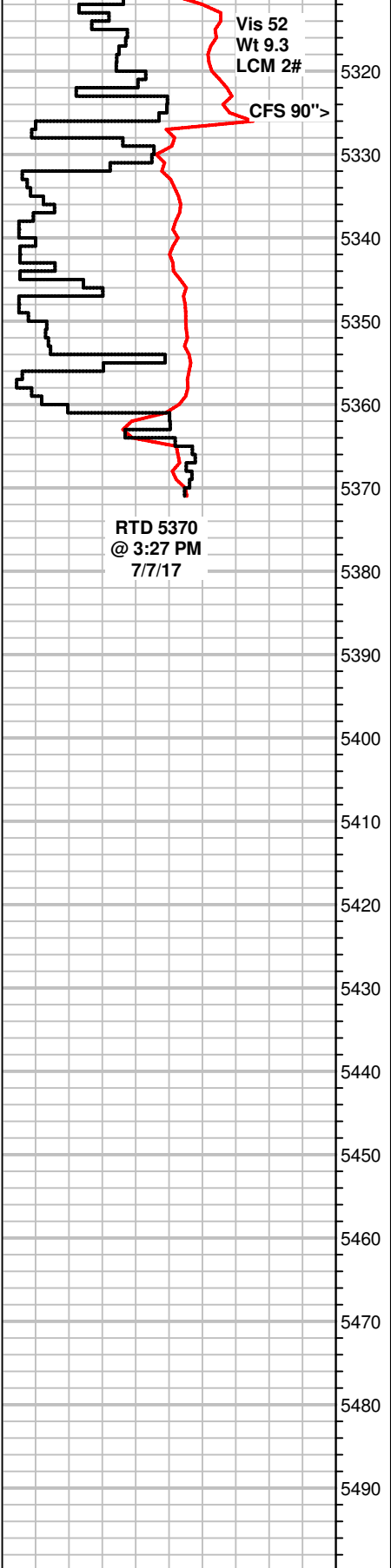
Straight Hole 1.25 degree

+100 UGK, 98 unit recycle

+80 UGK, +32 UGK recycle

+12 UGK, waiting on recycle

DST #3 5226-5244
MISS
30-60-60-120
SB BOB 30 Sec
GTS 1 min into bleed off,
1 in BB
SB BOB immed/GTS
immed, GA
27.603 MCF/10min
26.810 MCF/20min
26.017 MCF/30min
TSTM/40min



Scatt Dolo, A.A., decreasing amount
WS-PS, brn to crm, f- to m-gr oolitic, hard, Chert frgmts, white, NS

WS-PS, off white to crm, f-xln to chalky, oolitic, firm, fossilif, Chert, white, fossils
Dolo, brn, f-xln, oolitic to gritty txt, hard to firm, dull fluor, NS

Dolo, brn, gray, f-gr, sucrosic txt, some w/ mineral and dark organic specs, sli. oolitic pcs, brittle, dull fluor, NS

Dolo, A.A., influx of dark gray to black dolomite, fossilif/organic, dense, NS
scatt WS-PS, crm to off white, f-xln, dense looking, brittle, dull fluor, NS
rare Chert, white/tan

PS-WS, off white, crm, f-xln, chalky to f-xln txt with m-gr ooids in firm matrix, friable, glauc specs rare, NS

TSTM/50min
TSTM/60min
Rec: 4993' GIP
172' SOCM(10o,90m)
60' SOMCW(2o,28m,70w)
IH 2683#
IF 41-56#
ISIP 1191#
FF 43-86#
FSIP 1209#
FH 2461#
Temp 117°F
API .12 @ 76°F
CI 58,000ppm

Straight Hole 1.5 degree

DST #4 5259-5281
MISS
30-60-60-120
SB BOB 3 min
NBB
SB BOB immed
GTS 3min GA
41.881 MCFG throughout
open
1 inch BB
Rec: 4885' GIP
152' SWMCO
(60o,30m,10w)
122' MWCO
(50o,20m,30w)
60' OCW (30o,70w)
IH 2653#
IF 48-69#
ISIP 1461#
FF 52-128#
FSIP 1453#
FH 2496#
Temp 117°F
API .13 @ 80°F
CI 56,000ppm