

KEVIN L. KESSLER

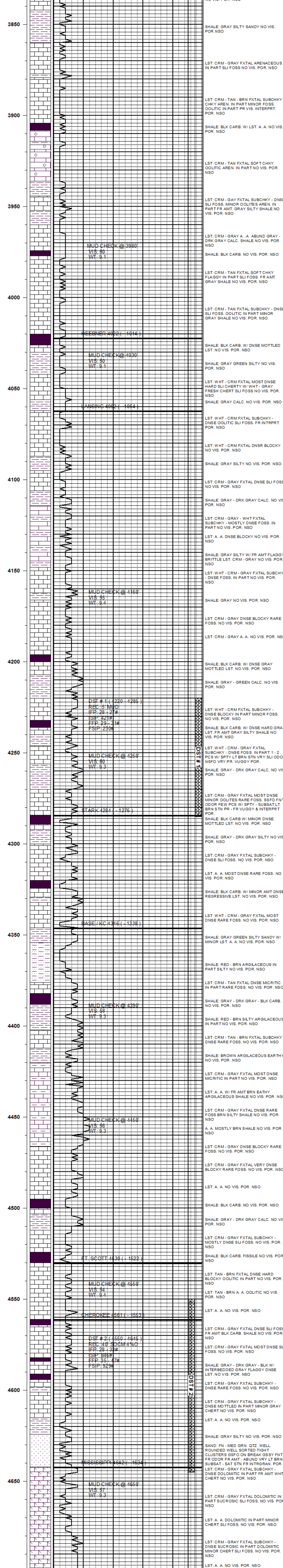
CONSULTING PETROLEUM GEOLOGIST

(316) 522 - 7338

OPERATOR : MULL DRILLING CO. INC.		ELEVATION
LEASE : BLOOM	WELL # : 1 - 3	KB: 3008'
LOCATION : 2382' FNL & 2128' FWL		GL: 3004'
SEC : 03	TWP : 11 S	RGE : 31 W
COUNTY : GOVE	STATE : KANSAS	MEASUREMENTS FROM:
		KB
CONTRACTOR: W W DRILLING RIG # 2		CASING RECORD:
COMM: 07 - 07 - 2017	COMP: 07 - 14 - 2017	SURFACE:
RTD: 4700'	LTD: 4701'	8 5/8" @ 260'
GEOLOGICAL SUPERVISION FROM: 3800'		PRODUCTION:
		NONE
SAMPLES SAVED FROM: 3800'		TO: RTD
		TO: RTD

FORMATION:	TOP	LOG	DATUM	TOP	SAMPLE	DATUM	COMP.	ELECTRICAL SURVEYS:
HEEBNER	4022	-	1014	4022	-	1014	- 14	DIL CNL / CDL MICRO SONIC
LANSING	4062	-	1054	4062	-	1054	- 06	
STARK	4284	-	1276	4284	-	1276	- 14	
BASE/ KC	4346	-	1338	4346	-	1338	- 18	
FORT SCOTT	4530	-	1522	4530	-	1522	- 12	
CHEROKEE	4561	-	1553	4561	-	1553	- 15	
MISSISSIPPI	4642	-	1634	4642	-	1634	- 22	

REFERENCE WELL FOR STRUCTURAL COMPARISON:
ABERCROMBIE # 1 BLOOM B 02 - 11 S - 31 W GOVE CO. KS.



COMMENTS :

DUE TO NEGATIVE DST RESULTS THIS WELL WAS PLUGGED AND ABANDONED

KEVIN L. KESSLER