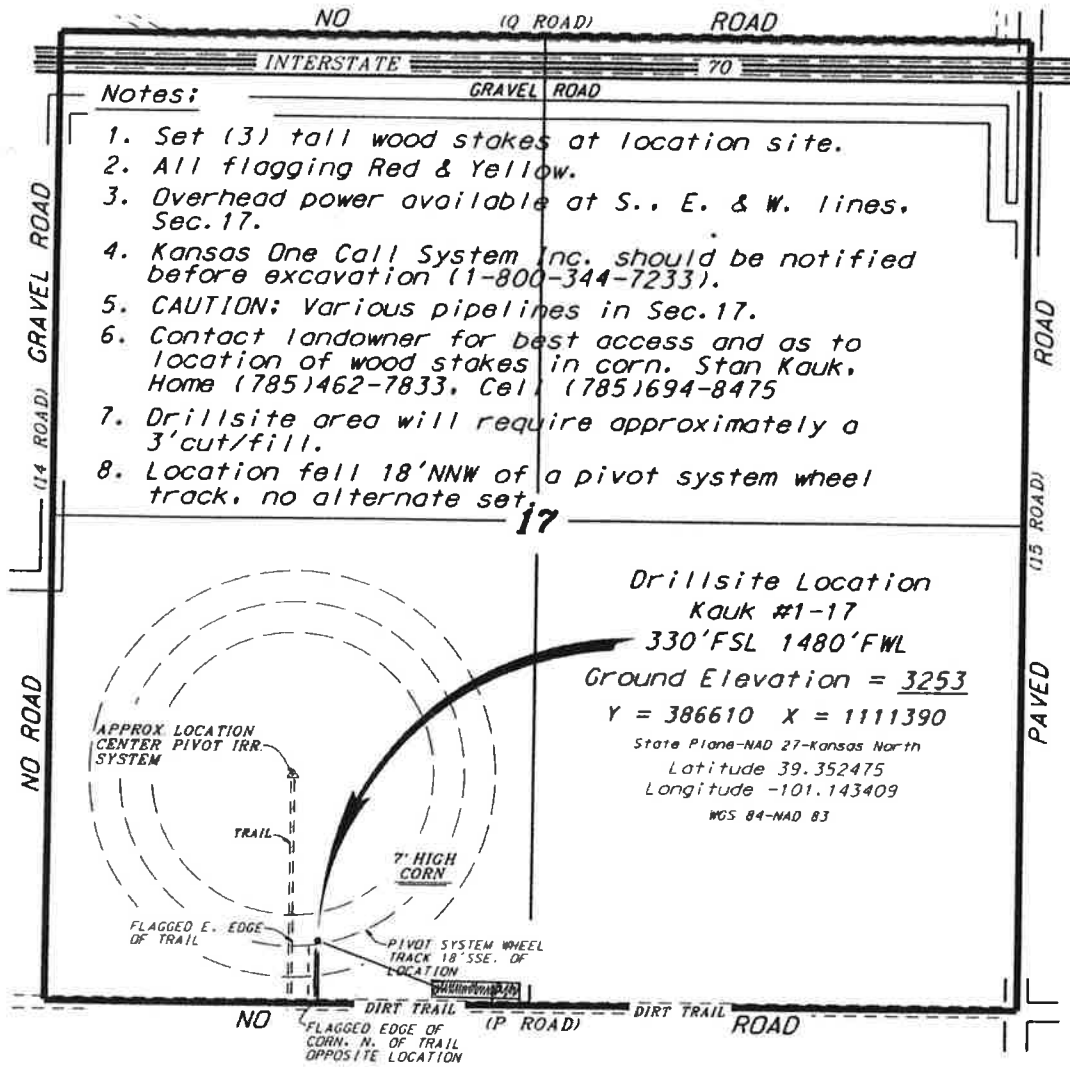


L. D. DRILLING, INC.
 KAUK LEASE
 SW. 1/4, SECTION 17, T8S, R34W
 THOMAS COUNTY, KANSAS

Directions:

From the intersection of Highway 25 and Interstate 70 1.1 miles south of Colby, Kansas) go 1.0 miles South on Highway 25, then go 4.0 miles West to the SE corner of Section 17, then go 0.72 miles West to a flag on the north edge of trail, then go 0.06 miles North to location.



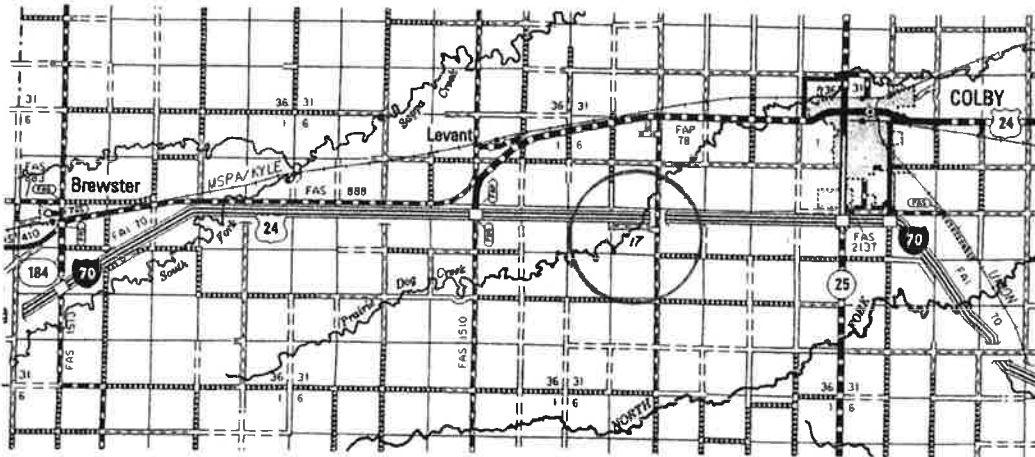
Notes:

1. Set (3) tall wood stakes at location site.
2. All flagging Red & Yellow.
3. Overhead power available at S., E. & W. lines, Sec. 17.
4. Kansas One Call System Inc. should be notified before excavation (1-800-344-7233).
5. CAUTION; Various pipelines in Sec. 17.
6. Contact landowner for best access and as to location of wood stakes in corn. Stan Kauk, Home (785)462-7833, Cell (785)694-8475
7. Drillsite area will require approximately a 3' cut/fill.
8. Location fell 18' NNW of a pivot system wheel track, no alternate set.

Drillsite Location
 KAUK #1-17
 330' FSL 1480' FWL
 Ground Elevation = 3253
 Y = 386610 X = 1111390
 State Plane-NAD 27-Kansas North
 Latitude 39.352475
 Longitude -101.143409
 NGS 84-NAD 83

Ingress and egress to location as shown on this plot is per usage only and may not be legally opened for public use. Contact landowner, tenant and county road department for access.

SCALE 1" = 1000'



* Controlling data is based upon the best maps and photographs available to us and upon a regular section of land containing 640 acres.
 * Approximate section lines were determined using the normal standard of care of oilfield surveyors practicing in the state of Kansas. The section corners, which establish the precise section lines, were not necessarily located, and the exact location of the drillsite location in the section is not guaranteed. Therefore, the operator securing this service and accepting this plot and all other parties relying thereon agree to hold Central Kansas Oilfield Services, Inc., its officers and employees harmless from all losses, costs and expenses and said entities released from any liability from incidental or consequential damages.
 * Elevations derived from National Geodetic Vertical Datum.

Date October 19, 2017

CENTRAL KANSAS OILFIELD SERVICES, INC. (620)792-1977