



TRILOBITE TESTING, INC.

DRILL STEM TEST REPORT

Cholla Production LLC

18-21s-26w Hodgeman

10390 Bradford Rd Suite 201 Littleton Co 80127

SRF Farms 1-18

ATTN: Bill Goff , Clayton E

Job Ticket: 63090

DST#: 2

Test Start: 2017.10.18 @ 09:10:24

GENERAL INFORMATION:

Formation: **Miss**
 Deviated: No Whipstock: ft (KB)
 Time Tool Opened: 11:32:34
 Time Test Ended: 17:31:33
 Interval: **4540.00 ft (KB) To 4660.00 ft (KB) (TVD)**
 Total Depth: 4660.00 ft (KB) (TVD)
 Hole Diameter: 7.85 inches Hole Condition: Fair
 Test Type: Conventional Bottom Hole (Reset)
 Tester: Ray Schwager
 Unit No: 77
 Reference Elevations: 2539.00 ft (KB)
 2531.00 ft (CF)
 KB to GR/CF: 8.00 ft

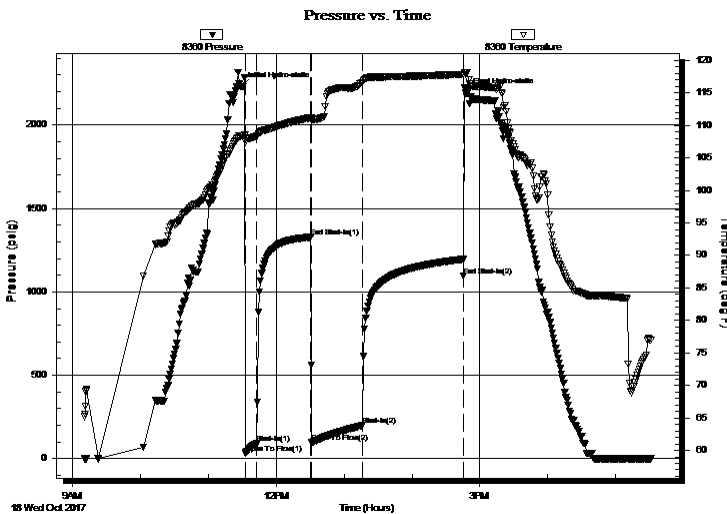
Serial #: 8360

Inside

Press@RunDepth: 199.83 psig @ 4542.00 ft (KB) Capacity: 8000.00 psig
 Start Date: 2017.10.18 End Date: 2017.10.18 Last Calib.: 2017.10.18
 Start Time: 09:10:24 End Time: 17:31:33 Time On Btm: 2017.10.18 @ 11:29:19
 Time Off Btm: 2017.10.18 @ 14:48:03

TEST COMMENT: 10-IFP-w k to a fr bl 1/2to 5 1/2"bl
 45-ISIP-no bl bk
 45-FFP-w k to a gd bl 1/4"to 8"bl
 90-FSIP-no bl bk

PRESSURE SUMMARY



Time (Min.)	Pressure (psig)	Temp (deg F)	Annotation
0	2230.23	108.41	Initial Hydro-static
4	32.45	107.44	Open To Flow (1)
14	90.01	108.32	Shut-In(1)
62	1327.96	111.24	End Shut-In(1)
62	96.48	110.89	Open To Flow (2)
107	199.83	116.67	Shut-In(2)
196	1095.81	117.81	End Shut-In(2)
199	2191.04	118.16	Final Hydro-static

Recovery

Length (ft)	Description	Volume (bbl)
380.00	MW 35%M65%W	4.24

Gas Rates

Choke (inches)	Pressure (psig)	Gas Rate (Mcf/d)

* Recovery from multiple tests



**TRILOBITE
TESTING, INC.**

DRILL STEM TEST REPORT

FLUID SUMMARY

Cholla Production LLC

18-21s-26w Hodgeman

10390 Bradford Rd Suite 201 Littleton Co 80127

SRF Farms 1-18

Job Ticket: 63090

DST#: 2

ATTN: Bill Goff ,Clayton E

Test Start: 2017.10.18 @ 09:10:24

Mud and Cushion Information

Mud Type: Gel Chem

Cushion Type:

Oil API:

deg API

Mud Weight: 9.00 lb/gal

Cushion Length:

ft

Water Salinity:

26000 ppm

Viscosity: 53.00 sec/qt

Cushion Volume:

bbbl

Water Loss: 9.16 in³

Gas Cushion Type:

Resistivity: ohm.m

Gas Cushion Pressure:

psig

Salinity: 2750.00 ppm

Filter Cake: 1.00 inches

Recovery Information

Recovery Table

Length ft	Description	Volume bbl
380.00	MW 35%M65%W	4.237

Total Length: 380.00 ft Total Volume: 4.237 bbl

Num Fluid Samples: 0

Num Gas Bombs: 0

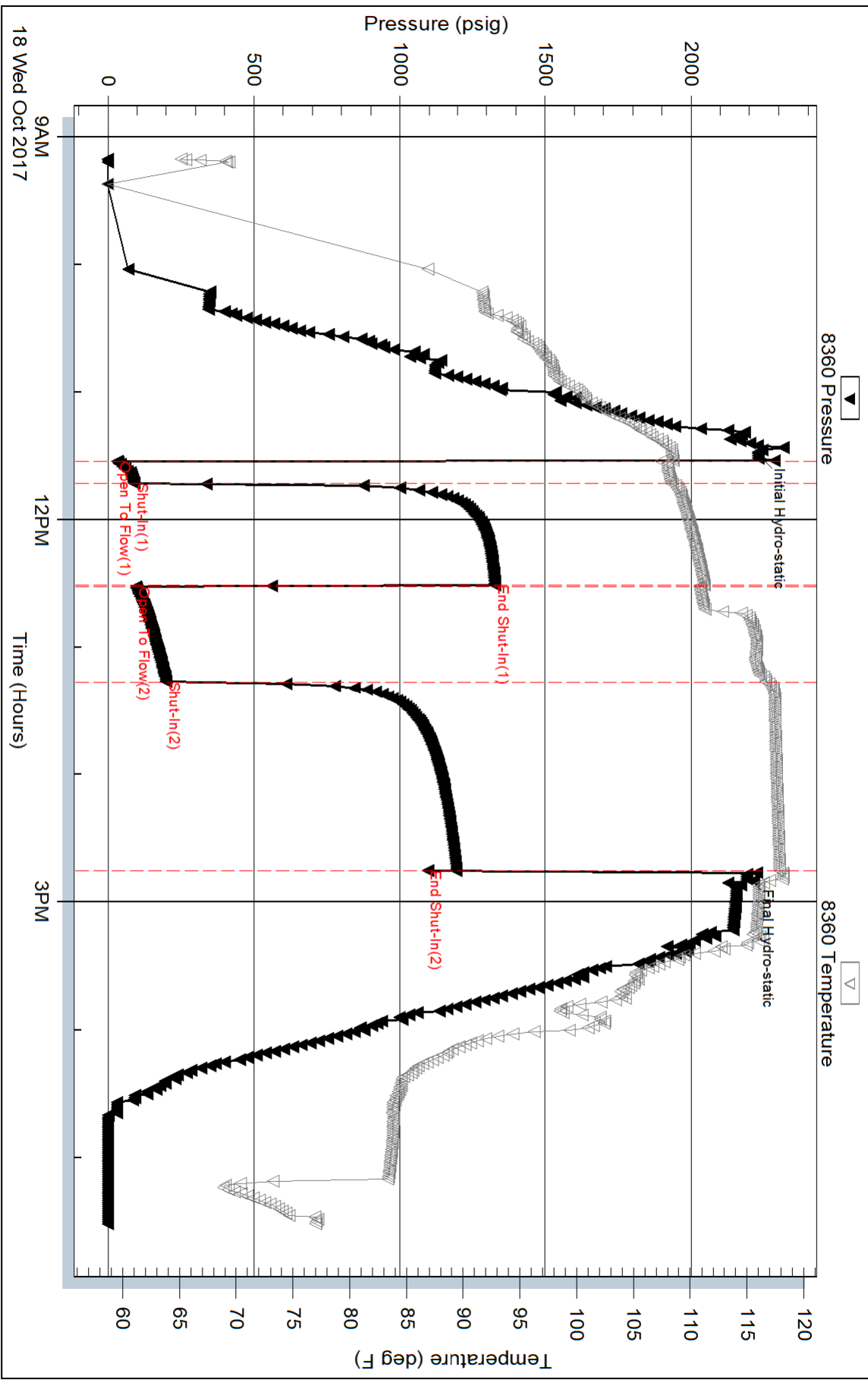
Serial #:

Laboratory Name:

Laboratory Location:

Recovery Comments: Sampler Data : PSI 150# 700MLmud 1300MLwater
RW .31 @ 60F

Pressure vs. Time



Serial #: 8673

Outside Cholla Production LLC

SRF Farms 1-18

DST Test Number: 2

