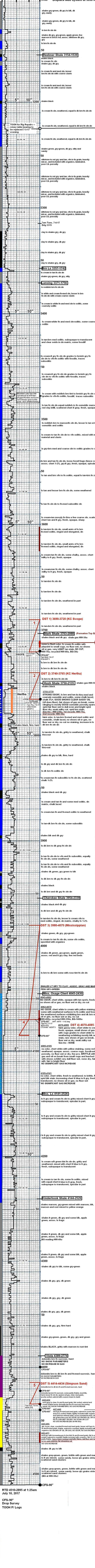


**FIELD  
REPORT**



**FIELD REPORT**

samples dominated by shales and some clay 3100' to 3250'

---

Short Trip 20 Stands  
CTCH for 60 minutes  
SHT at 3720' - 3/4 deg dev.  
Pipe Strap at 3720' - 0.47' long to board

MUD-CO at 3720'  
WT: 9.3, VIS: 54, WL: 8.8  
CHL: 4.000, LCM: 1-1/2#

**DST 1) 3690-3720 (KC Swope)**  
[30-60-30-60]  
Rec: 30' Mud w/slight show of oil  
IFP: 22-27, FFP: 25-31  
BHP: 1226-1302

**DST 1 - Chart**

MUD-CO at 3765' After DST 2  
WT: 9.0\*, VIS: 47, WL: 8.8  
CHL: 4.000, LCM: 1-1/2#

**DST 2) 3740-3765 (KC Hertha)**  
[30-60-45-90]  
1st open: GTS/7" 30.7 MCFG  
2nd open: TSTM to 26.0 MCFG  
Rec: 580' Clean Oil (42 deg API)  
124' Gassy Mud Watery Cut Oil (50% g, 30% o, 10% w, 10% m)  
124' Water (100% w - 7.3.000 ppm)  
828' - Total Fluid - ALL in Drill Pipe  
IFP: 113-187, FFP: 237-325  
BHP: 973-968

chlorides of formation water: 73,000 ppm  
chlorides of mud system: 4,000 ppm  
resistivity of formation water: 0.11 at 65 deg F

**DST 2 - Chart**

background reading at HW-1700u after DST 2

---

**GAS UNIT**

background reading at HW-1700u after DST 2

background reading at HW-1700u after DST 2

background reading at HW-1700u after DST 2

background reading at HW-1700u after DST 2

background reading at HW-1400u after DST 2

background reading at HW-1400u after DST 2

MUD-CO at 4070'  
WT: 9.3, VIS: 50, WL: 10.8  
CHL: 6.000, LCM: 1#

**DST 3) 3980-4070 (Mississippian)**  
[30-60-45-90]  
GTS/7" 1st open: 29.1 M - 32.36 MCFG  
2nd open: 60.1 M - stabilized at 51.339 MCFG  
Rec: 150' Muddy Water (60% w, 40% m)  
IFP: 67-66, FFP: 99-99  
BHP: 1142-1145

chlorides of formation water: 42,000 ppm  
chlorides of mud system: 6,000 ppm  
resistivity of formation water: 0.17 @ 70 deg F

**DST 3 - Chart**

**DST 4) 4070-4085 (Mississippian)**  
[30-60-60-90]  
GTS/9" - 1st op: 149.7 M to 187.8 MCFG  
2nd op: 265.2 M to 261.5 MCFG  
Rec: 174' Mud Cut Water (70% w, 30% m)

295' - Total Fluid - ALL in Drill Pipe  
IFP: 112-197, FFP: 123-135  
BHP: 1160-1155

chlorides of formation water: 83,000 ppm  
chlorides of mud system: 6,000 ppm  
resistivity of formation water: 0.095 at 70 deg F

---

MUD-CO at 4423'  
WT: 9.3, VIS: 50, WL: 9.6  
CHL: 5.300, LCM: 1-1/2#

**4440-4510**

samples dominated by shales 90%+

TEST GAS IN UNIT AT 4440'  
SHOT TEST GAS IN UNIT AT BOTH FLOWLINE AND AT BITTARE JUST OUTSIDE UNIT - Both flowlines indicated responses of HW-700u and HW-122u

**DST 5) 4414-4434 (Simpson Sand)**  
[30-60-30-60]  
Rec: 50' Watery Cut Mud (20% w, 80% m)  
62' Mud Cut Water (68% w, 12% m)

112' - Total Fluid - ALL in Drill Pipe  
IFP: 16-43, FFP: 40-60  
BHP: 1572-1569

RTD 4510-2895 at 1:25am  
July 10, 2017

CFS-90\*  
Drop Survey  
TOOH F/ Logs