



**TRILOBITE
TESTING, INC.**

DRILL STEM TEST REPORT

LaVeta Oil & Gas
305 N Buffalo
Stafford, KS 67578
ATTN: Bruce Reed

13-22S-12W Stafford
Jan 3
Job Ticket: 57840 **DST#: 2**
Test Start: 2017.10.18 @ 11:08:08

GENERAL INFORMATION:

Formation: **Arbuckle**
Deviated: No Whipstock: ft (KB)
Time Tool Opened: 12:38:53
Time Test Ended: 17:02:08
Interval: **3675.00 ft (KB) To 3684.00 ft (KB) (TVD)**
Total Depth: 3684.00 ft (KB) (TVD)
Hole Diameter: 7.88 inches Hole Condition: Good
Test Type: Conventional Bottom Hole (Reset)
Tester: Leal Cason
Unit No: 74
Reference Elevations: 1851.00 ft (KB)
1841.00 ft (CF)
KB to GR/CF: 10.00 ft

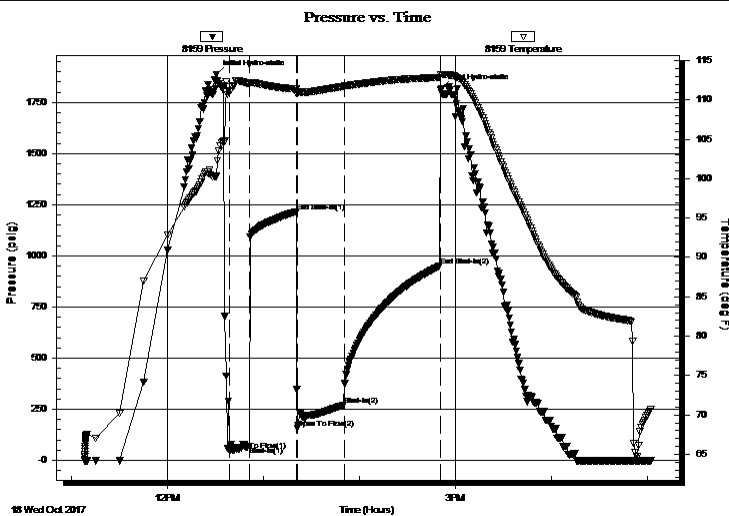
Serial #: 8159

Inside

Press@RunDepth: 271.09 psig @ 3676.00 ft (KB) Capacity: 8000.00 psig
Start Date: 2017.10.18 End Date: 2017.10.18 Last Calib.: 2017.10.18
Start Time: 11:08:09 End Time: 17:02:08 Time On Btm: 2017.10.18 @ 12:30:38
Time Off Btm: 2017.10.18 @ 14:51:08

TEST COMMENT: IF: Strong Blow , BOB in 8 minutes
IS: No Blow Back
FF: Strong Blow , BOB in 2 minutes
FS: 2 inch Blow Back

PRESSURE SUMMARY



Time (Min.)	Pressure (psig)	Temp (deg F)	Annotation
0	1886.90	100.32	Initial Hydro-static
9	47.63	111.03	Open To Flow (1)
21	67.90	112.04	Shut-In(1)
50	1216.20	111.38	End Shut-In(1)
51	156.32	111.01	Open To Flow (2)
80	271.09	111.73	Shut-In(2)
140	952.48	112.85	End Shut-In(2)
141	1816.21	113.20	Final Hydro-static

Recovery

Length (ft)	Description	Volume (bbl)
0.00	744 GIP	0.00
248.00	Water	3.48
186.00	GMOCW 10%G 5%O 8%M 77%W	2.61
62.00	GMOCW 40%G 10%M 12%O 38%W	0.87
90.00	GSY Oil 30%G 70%O	1.26

Gas Rates

Choke (inches)	Pressure (psig)	Gas Rate (Mcf/d)

* Recovery from multiple tests



TRILOBITE TESTING, INC.

DRILL STEM TEST REPORT

LaVeta Oil & Gas

13-22S-12W Stafford

305 N Buffalo
Stafford, KS 67578

Jan 3

ATTN: Bruce Reed

Job Ticket: 57840

DST#: 2

Test Start: 2017.10.18 @ 11:08:08

GENERAL INFORMATION:

Formation: **Arbuckle**

Deviated: No Whipstock: ft (KB)

Time Tool Opened: 12:38:53

Time Test Ended: 17:02:08

Interval: 3675.00 ft (KB) To 3684.00 ft (KB) (TVD)

Total Depth: 3684.00 ft (KB) (TVD)

Hole Diameter: 7.88 inches Hole Condition: Good

Test Type: Conventional Bottom Hole (Reset)

Tester: Leal Cason

Unit No: 74

Reference Elevations: 1851.00 ft (KB)

1841.00 ft (CF)

KB to GR/CF: 10.00 ft

Serial #: 6806

Outside

Press@RunDepth: psig @ 3676.00 ft (KB)

Start Date: 2017.10.18

End Date:

2017.10.18

Start Time: 11:08:09

End Time:

17:02:08

Capacity: 8000.00 psig

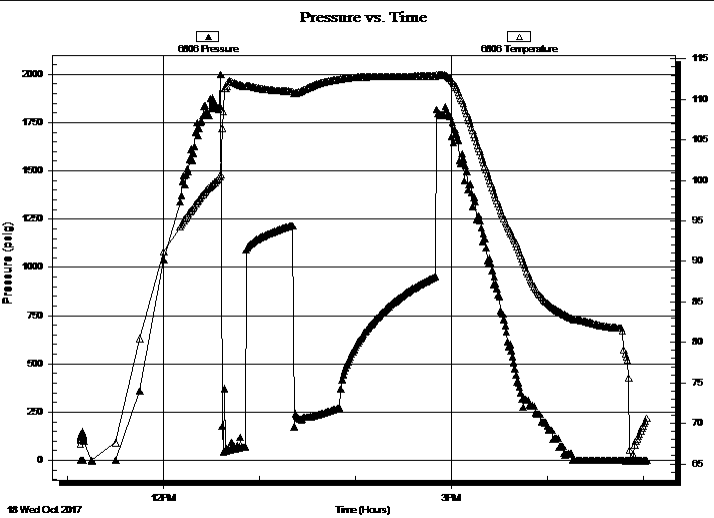
Last Calib.:

2017.10.18

Time On Btm:

Time Off Btm:

TEST COMMENT: IF: Strong Blow , BOB in 8 minutes
IS: No Blow Back
FF: Strong Blow , BOB in 2 minutes
FS: 2 inch Blow Back



PRESSURE SUMMARY

Time (Min.)	Pressure (psig)	Temp (deg F)	Annotation

Recovery

Length (ft)	Description	Volume (bbl)
0.00	744 GIP	0.00
248.00	Water	3.48
186.00	GMOCW 10%G 5%O 8%M 77%W	2.61
62.00	GMOCW 40%G 10%M 12%O 38%W	0.87
90.00	GSY Oil 30%G 70%O	1.26

* Recovery from multiple tests

Gas Rates

Choke (inches)	Pressure (psig)	Gas Rate (Mcf/d)



**TRILOBITE
TESTING, INC.**

DRILL STEM TEST REPORT

FLUID SUMMARY

LaVeta Oil & Gas

13-22S-12W Stafford

305 N Buffalo
Stafford, KS 67578

Jan 3

Job Ticket: 57840

DST#: 2

ATTN: Bruce Reed

Test Start: 2017.10.18 @ 11:08:08

Mud and Cushion Information

Mud Type: Gel Chem

Cushion Type:

Oil API:

39.6 deg API

Mud Weight: 10.00 lb/gal

Cushion Length:

ft

Water Salinity:

30000 ppm

Viscosity: 52.00 sec/qt

Cushion Volume:

bbbl

Water Loss: 8.78 in³

Gas Cushion Type:

Resistivity: ohm.m

Gas Cushion Pressure:

psig

Salinity: 4500.00 ppm

Filter Cake: 0.02 inches

Recovery Information

Recovery Table

Length ft	Description	Volume bbl
0.00	744 GIP	0.000
248.00	Water	3.479
186.00	GMOCW 10%G 5%O 8%M 77%W	2.609
62.00	GMOCW 40%G 10%M 12%O 38%W	0.870
90.00	GSY Oil 30%G 70%O	1.262

Total Length: 586.00 ft Total Volume: 8.220 bbl

Num Fluid Samples: 0

Num Gas Bombs: 0

Serial #:

Laboratory Name:

Laboratory Location:

Recovery Comments: Gravity w as 39.8 @ 64 degrees

RW w as .25 @ 66 degrees

Pressure vs. Time

