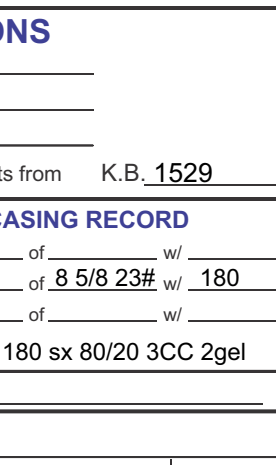


GEOLOGICAL REPORT

Larry A. Nicholson

NAID 83
38484762
96527180

COMPANY #	Blue Ridge Petroleum Corporation	ELEVATIONS	
API #	15-127-20598	FIELD #	Wildcat
LEASE	Olson #1-9 SE NW NW SE	WELL #	#1-9
LOCATION	2173' FSL 1997' FEL SE NW NW SE		
SURVEY	2173' FSL 1997' FEL		
SECTION	9 TWP 14S RGE 8E		
COUNTY	Morris	STATE	Kansas
CONTRACTOR	Discovery	Rig #	2
SPUD	10-02-17 4:30 pm	COMP.	LTD 2146
RTD	10-08-17 2:04 am	LTD	2146
MUD UP AT	1200		
MUD TYPE	Chemical MudCo J Whiting		
SAMPLES SAVED	FROM 200 TO RTD		
DRILLING TIME	FROM 600 TO RTD		
SAMPLES EXAMINED	FROM 300 TO RTD		
GEOLOGICAL SUPERVISION	LARRY A. NICHOLSON	Production	8.5' @ 263' 60' @ 263' 60' @ 263'
WELL SITE GEOLOGIST	LARRY A. NICHOLSON	Production	6' @ 263' 180' @ 263' 30' @ 263'
ELECTRICAL SURVEYS	ELI, Den, NW, PE, Dual, Micro, Sonic		

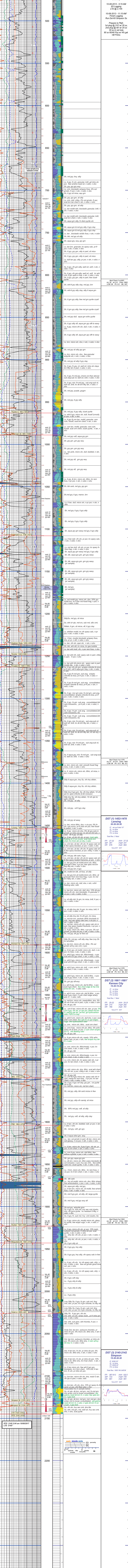
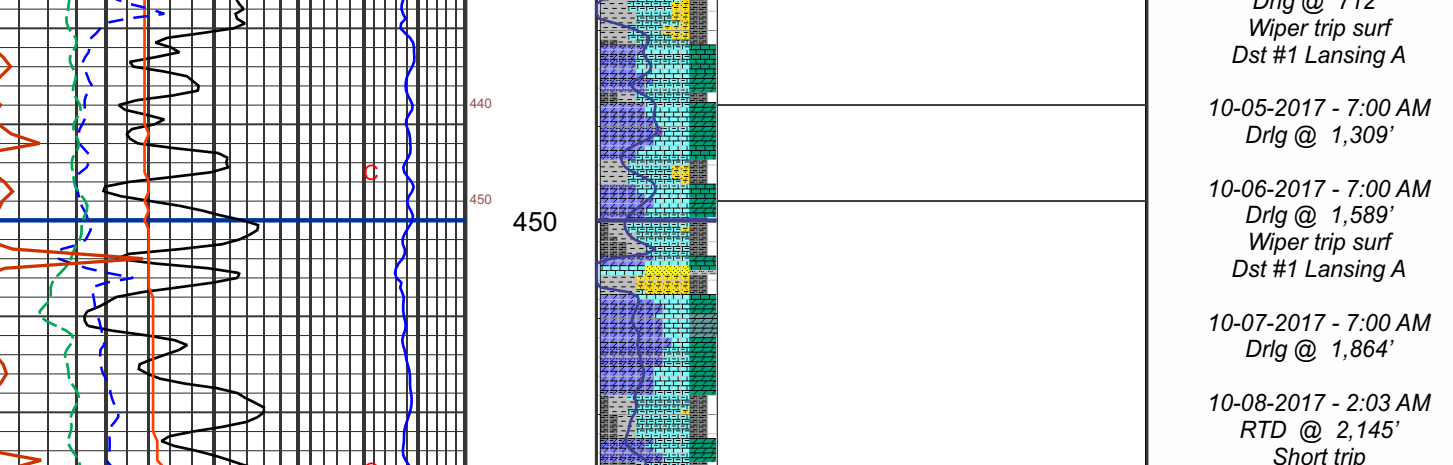


FORMATION	SAMPLE TOPS	SUBSEA TOPS	ELEC LOG DATUM	SUBSEA DATUM	REFERENCE WELL
Topokela ls.	+596	+596	+596	+596	A
Healston Sh.	+293	+293	+293	+293	B
Toronto	+249	+249	+249	+249	
Lansing	+1454	+75	+1454	+75	
Kansas City	1591	-62	1591	-62	
Stark Shale	1700	-171	1700	-171	
BKC	1748	-178	1748	-178	
Hunter	1923	-354	1923	-354	
Maquoketa Sh	1943	-414	1943	-414	
Viola ls	2026	-497	2026	-497	
Simpson Sh	2130	-601	2130	-601	
RTD	2145	-616	2145	-616	
LTD	2145	-616	2145	-616	

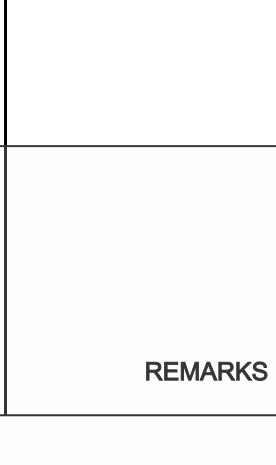
REMARKS & RECOMMENDATIONS:
Based on logs, tests, and samples, the well was P&A.
***Note: The rig and logs were on same depth.**
Dst internals and topers are the same for depth & this report.

LAN 792, Modified 505, 1111, 412, 1017 Manhattan 1 inch = 25.4mm; 8.5 x 120 216 mm x 3048 mm

LEGEND



COMPANY	Blue Ridge Petroleum Corporation	ELEVATIONS	K.B. 1529
LEASE	Olson #1-9 SE NW NW SE	D.F.	1521
LOCATION	2173' FSL 1997' FEL SEC. 9 Twp 14S RGE 8E	All measurements from	K.B. 1529
COUNTY	Morris	STATE	Ks



RTD 2145 2:04 am 10/06/2017 LTD 2145

DST (1) 1453-1470 Lansing 30-30-30-30

DST (2) 1661-1661' Kansas City 15-30-15-30

DST (3) 2145-2142 Simpson 1805-30-30