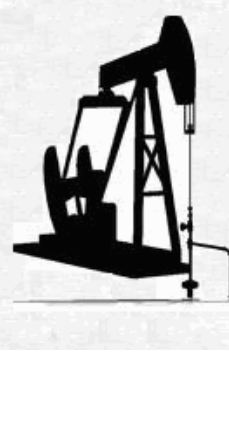


WELLSITE GEOLOGIST'S REPORT

VERNON C. SCHRAG
CONSULTANT GEOLOGIST



Scale 1:240 (5"=100') Imperial

Well Name: **PARIS #2-7**
Location: **SE SW NW NW SEC. 07-19S-28W**
Licence Number: **API: 15-101-22595**
Spud Date: **July 06, 2017**
Surface Coordinates: **1180' FNL & 619' FWL**

Region: **Lane Co., KS**
Drilling Completed: **July 13, 2017**

Bottom Hole Coordinates:
Ground Elevation (ft): **2790'** K.B. Elevation (ft): **2800'**
Logged Interval (ft): **3800'** To: **RTD** Total Depth (ft): **4675'**
Formation: **Mississippi Dolomite**
Type of Drilling Fluid: **Chemical Premix (Displaced)**

Printed by MUD.LOG from WellSight Systems 1-800-447-1534 www.WellSight.com

OPERATOR:

Company: **Larson Engineering Inc.**
Address: **562 West State Road 4**
Olmitz, KS 67564-8561

DRILLING CONTRACTOR:

Southwind Drilling Co., Rig #8

DP 4.5" XH (16.6#); DC 6-1/4" x 2-3/8", 495.88, Kelly 41.00'; Tool Joint 5.5" ; Bit: Reed R22AP, 7-7/8", standard jets 14-14-14; rpm 85, WOB 35k; Kelly Bushing 10' above ground level; Bill Sanders (tool pusher), Doug Roberts (daylight driller).

CASING:

Ran 6 jts new 8-5/8" 20# R3 STC 8rd csg. Tallied 253', set @ 266' KB.

Ran 114 jts new API Tenaris N-80 R3 LTC 8rd csg. Tallied 4673.91', set @ 4672' KB.

CIRCULATION SYSTEM:

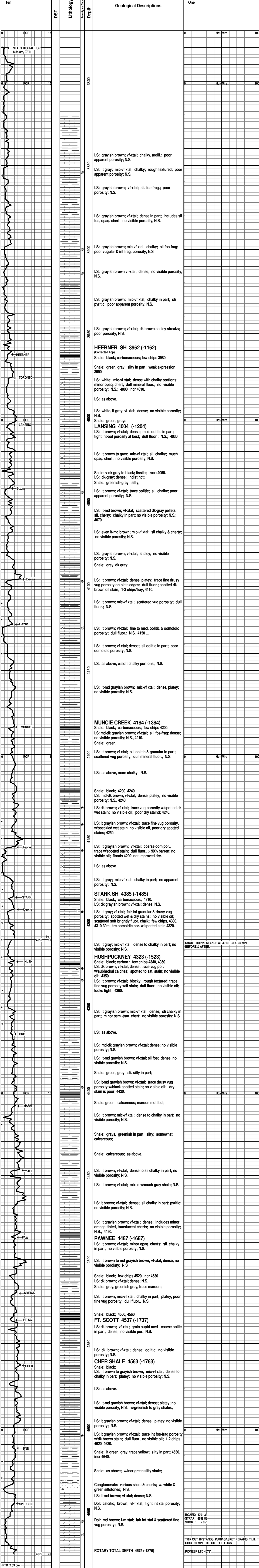
Continental EMSCO D-375, duplex, 6 x 14, 58 spm, Chemical, premix, earth pits, MudCo/Service Mud, Inc., Jason Whiting

OPEN HOLE LOGS:

DN, DI (SP), ML (stacked tools); No Sonic; 5" detail LTD-3600; 2" DI to surface casing; Pioneer Wireline, Hays, KS, LTD 4673', RTD 4675'.

DRILL STEM TESTS:

None.



BOARD: 4701.33
STRAP: 4699.88
SHORT: 2.05'
TRIP OUT 16 STANDS, PUMP GASKET REPAIRS, T.J.H., CIRC. 90 MIN, TRIP OUT FOR LOGS.
PIONEER LTD 4673'