

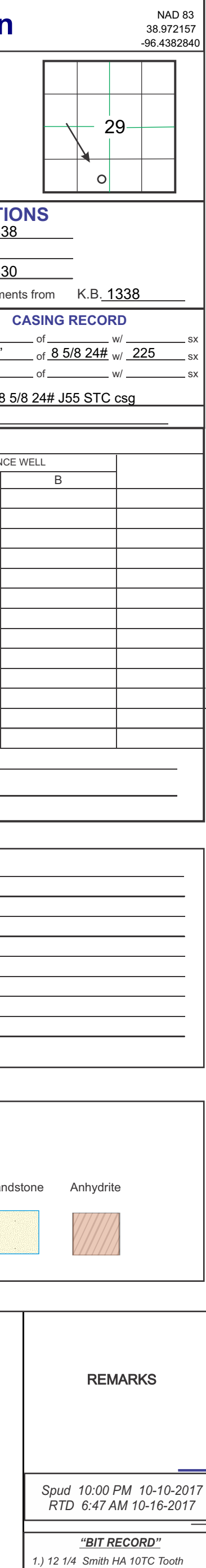
# GEOLOGICAL REPORT

## Larry A. Nicholson

NAO 83  
38392817  
96-4382840

COMPANY & WELL Blue Ridge Petroleum Meseke #1-2  
LOCATION 330° FSL 2208° FEL SE SE SW  
SEC 29 TWP 12S R9E 9E  
COUNTY Wabunsee STATE KS

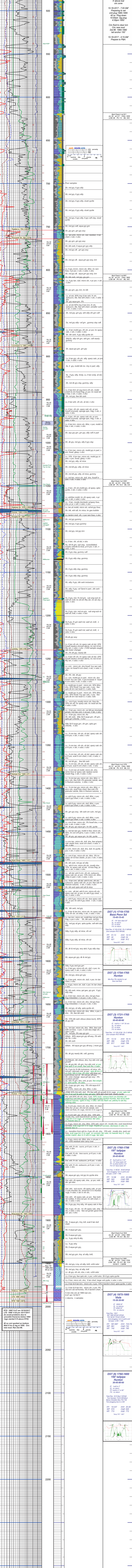
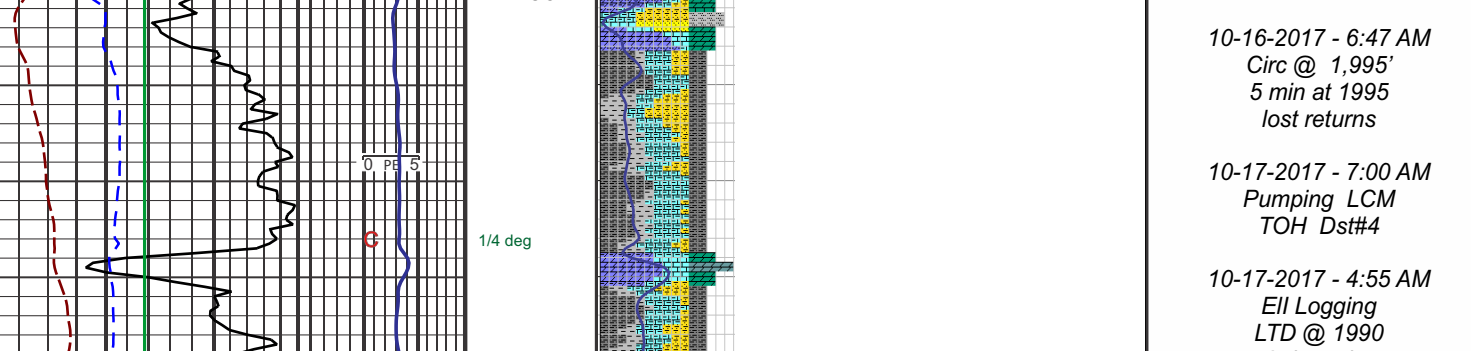
COMPANY Blue Ridge Petroleum Corporation  
API # 15-197-20303 FIELD Wildcat  
LEASE Meseke WELL # 1-29  
LOCATION SURVEY 330° FSL 2208° FEL  
SECTION 29 TWP 12S R9E 9E  
COUNTY Wabunsee STATE Kansas  
CONTRACTOR Discovery Rig # 2  
SPUD 10:00 pm 10/10/17 COMP. K.B. 1338  
RTD 1995 6:47 pm 10/17/2017 LTD 1990  
MUD UPAT 972-881 G.F. 1330  
MUD TYPE Chemical MudCo J Writing All measurements from K.B. 1338



FORMATION	SAMPLE TOPS	ELE LOG SUBSEA DATUM	DATE	REFERENCE WELL
Topoka ls.	764	+574	754	A
Hebston Sh	1024	+314	1074	B
Douglas Sh	1087	+251	1087	
Lansing	1243	+95	1240	
Kansas City	1385	-47	1385	
Stark Shale	1486	-148	1485	
BKC	1550	-212	1550	
Cherokee	1672	-334	1672	
Hunter	1755	-417	1755	
Maquoketa Sh	1880	-542	1884	
Viola ls	1983	-645	1983	
RTD			1995	
LTD			1990	

REMARKS & RECOMMENDATIONS:  
Based on data lack of permeable reservoir and recoverable hydrocarbon the decision was to P&A

LAN 792, Modified 505, 1111, 412, 1017 Manhattan Inch = 25.4mm; 8.5 x 120 216 mm = 3048 mm



COMPANY Blue Ridge Petroleum Corporation  
LEASE Meseke #1-29 SE SE SW  
LOCATION 330° FSL 2208° FEL SEC. 29 TWP 12S R9E 9E  
COUNTY Wabunsee STATE KS

ELEVATIONS  
K.B. 1338  
D.F. 1330  
All measurements from K.B. 1338

